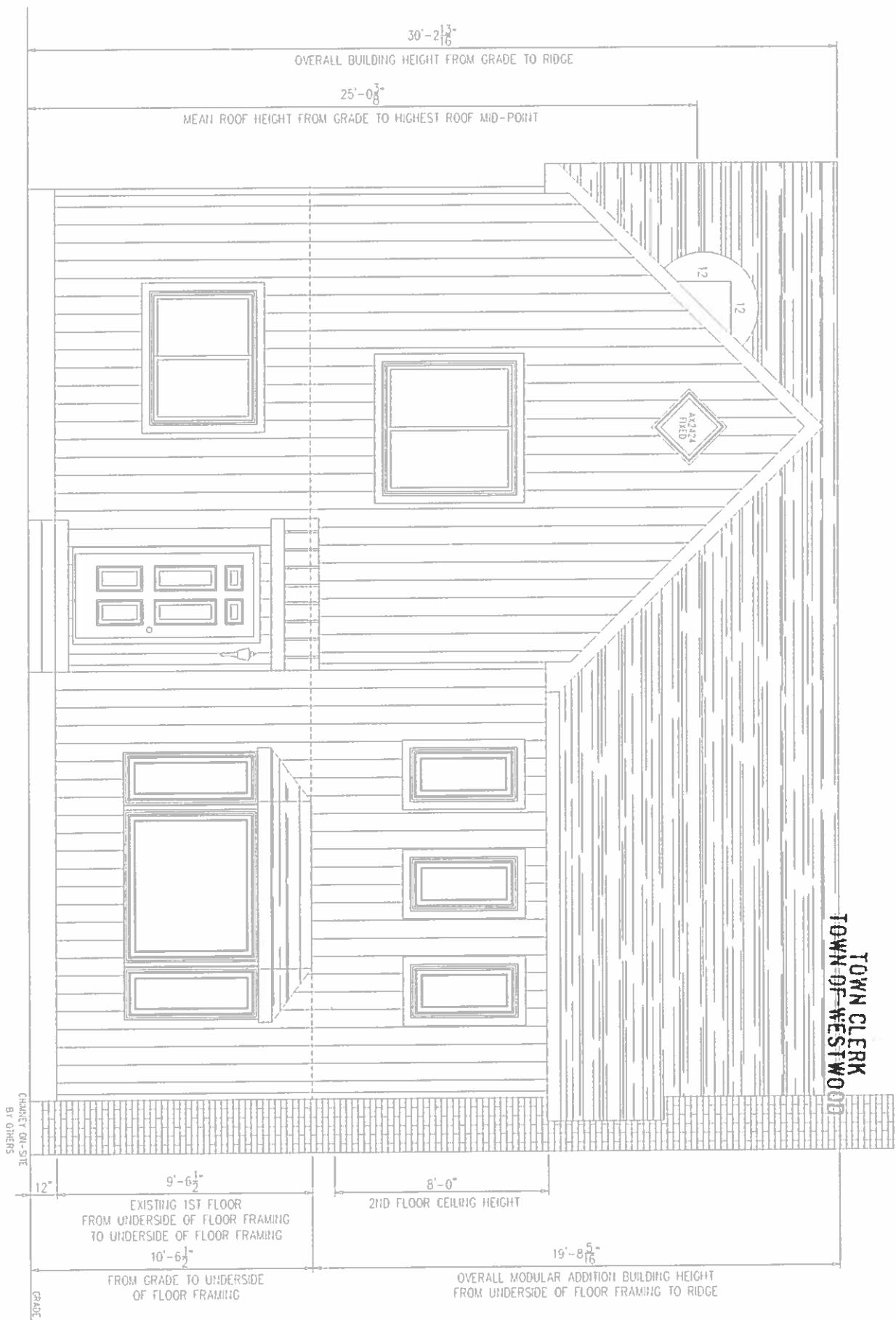


FRONT ELEVATION



2017 FEB - 1 P 3 59

TOWN CLERK
TOWN OF WESTWOOD

PFS Corporation
Northeast Region
APPROVED
H Raup - 3
1/23/17
Approval limited to
Factory Built Portion



Durabuilt Homes, LLC.
1910 North Old Trail
Selinsgrove, PA, 17870
(570) 743-2012

DATE	BY

DATE	BY
12/29/16	JS

DATE	BY
6/27/16	KJP
7/27/16	KJP
7/29/16	KJP
8/22/16	KJP
8/30/16	KJP
10/27/16	MDC
12/7/16	KJP
12/19/16	SW

BUILDER:
Hybrid Built Homes
67 Federal Avenue
Quincy, MA 02169

RETAIL:
Zaprauski
95 Willard Circle
Westwood, MA 02090

Tracking #16-0365

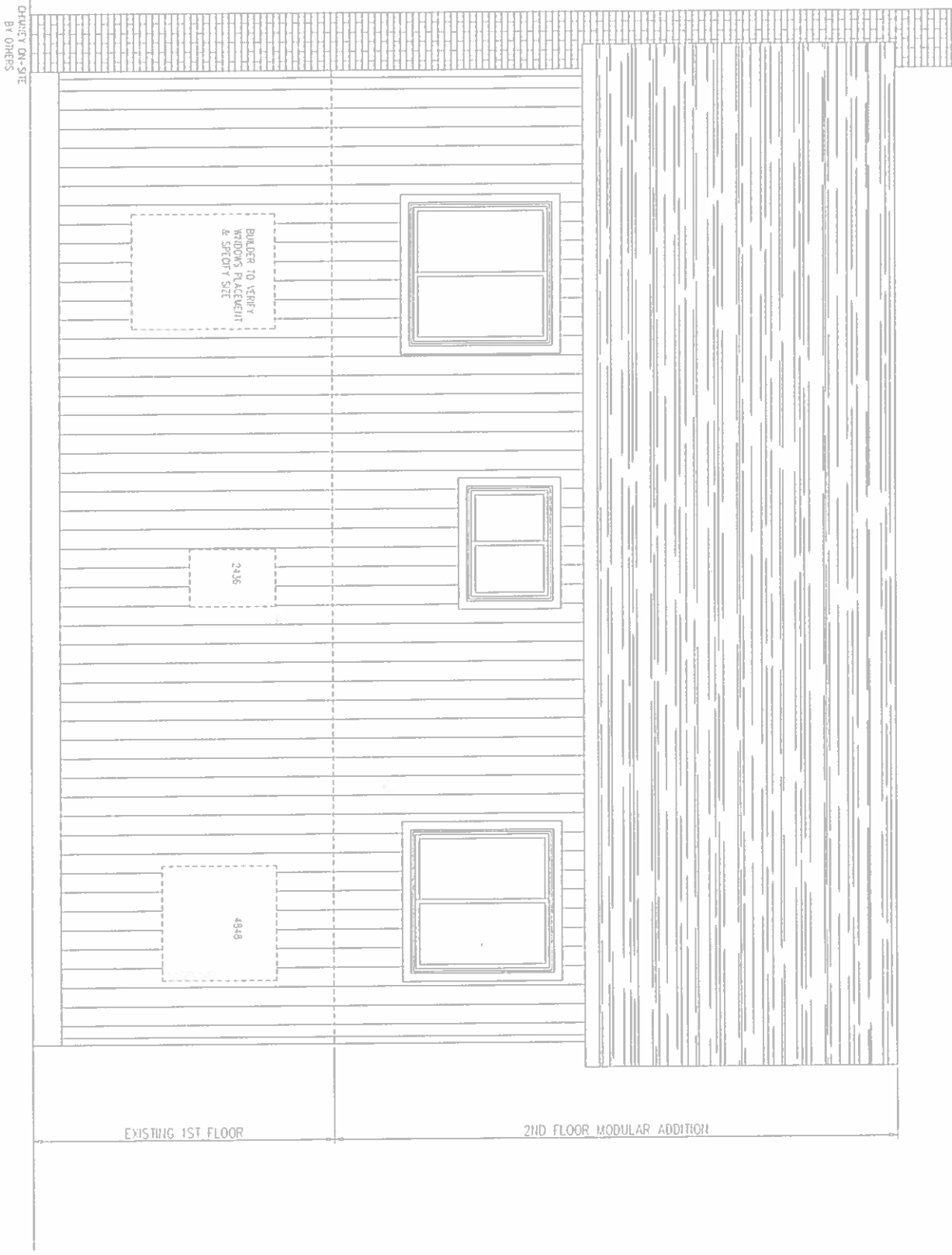
SO.FT. 1028

STATE: MA

SALES PERSON:
Frank Hanlon

DRAWING:
FRONT ELEVATION

SHEET
4



REAR ELEVATION

PFS Corporation
Northeast Region
APPROVED
H Raup - 3
1/23/17
 Approval limited to
 Factory Built Portion



Durabuilt Homes, LLC.
 1910 North Old Trail
 Selinsgrove, PA, 17870
 (570) 743-2012

DATE	BY

DATE	BY
12/29/16	JS

DATE	BY
6/27/16	KJP
7/27/16	KJP
7/29/16	KJP
8/22/16	KJP
8/30/16	KJP
10/27/16	MDC
12/7/16	KJP
12/19/16	SW

BUILDER:
 Hybrid Built Homes
 67 Federal Avenue
 Quincy, MA 02169

RETAIL:
 Zaprauski
 95 Willard Circle
 Westwood, MA 02090

Tracking #16-0365

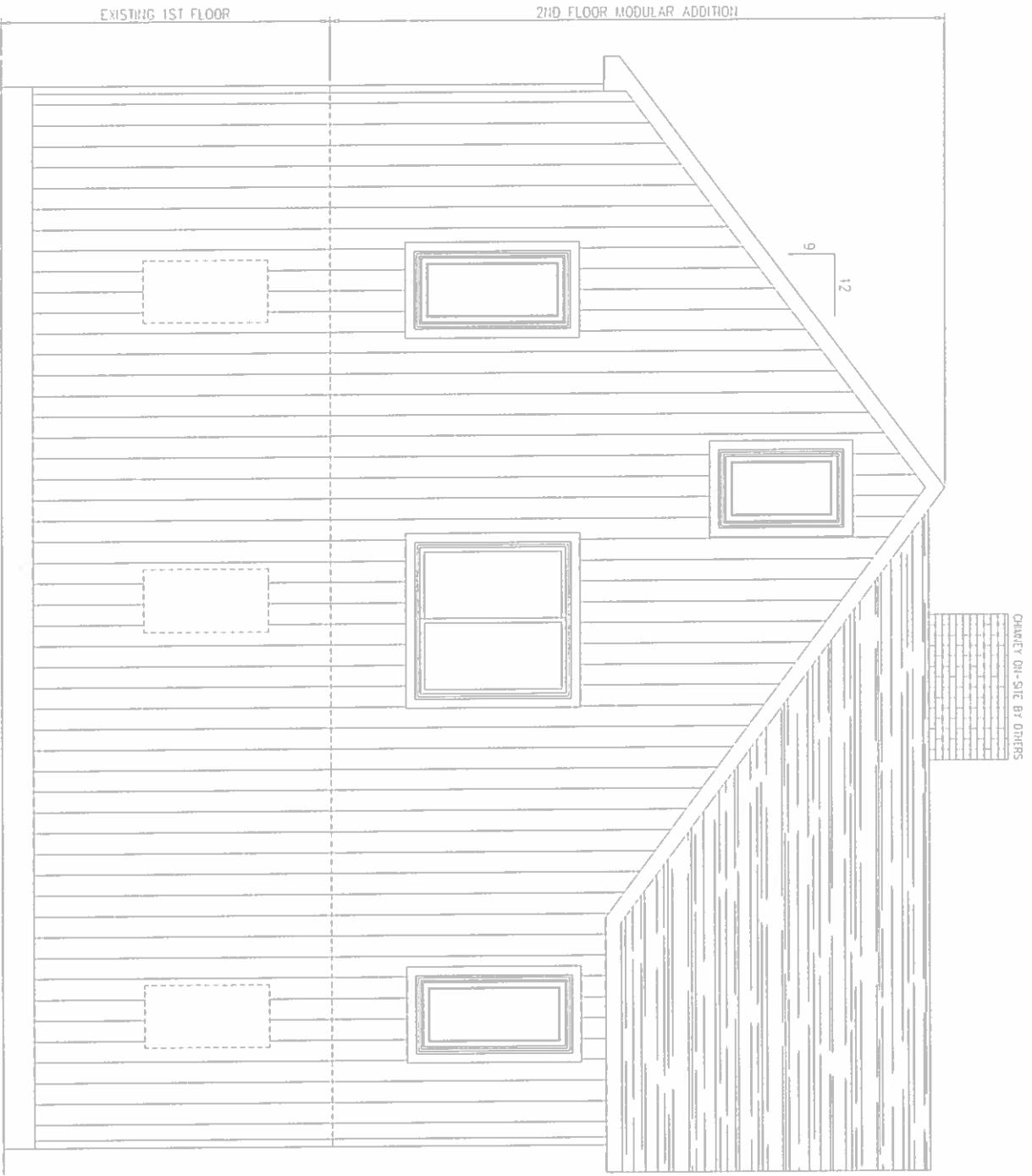
SOFT: 1028

STATE: MA

SALES PERSON: Frank Hanlon

DRAWING: REAR ELEVATION

SHEET: 4.1



LEFT SIDE ELEVATION

PFS Corporation
Northeast Region
APPROVED
H Raup - 3
1/23/17
 Approval limited to
 Factory Built Portion



Durabuilt Homes, LLC
 1910 North Old Trail
 Selinsgrove, PA, 17870
 (570) 743-2012

DATE	BY

DATE	BY
12/29/16	JS

DATE	BY
6/27/16	KJP
7/27/16	KJP
7/29/16	KJP
8/22/16	KJP
8/30/16	KJP
10/27/16	MDC
12/7/16	KJP
12/19/16	SW

BUILDER: Hybrid Built Homes 67 Federal Avenue Quincy, MA 02169	RETAIL: Zaprauski 95 Willard Circle Westwood, MA 02090
--	--

Tracking #16-0365

SO.FT.: 1028

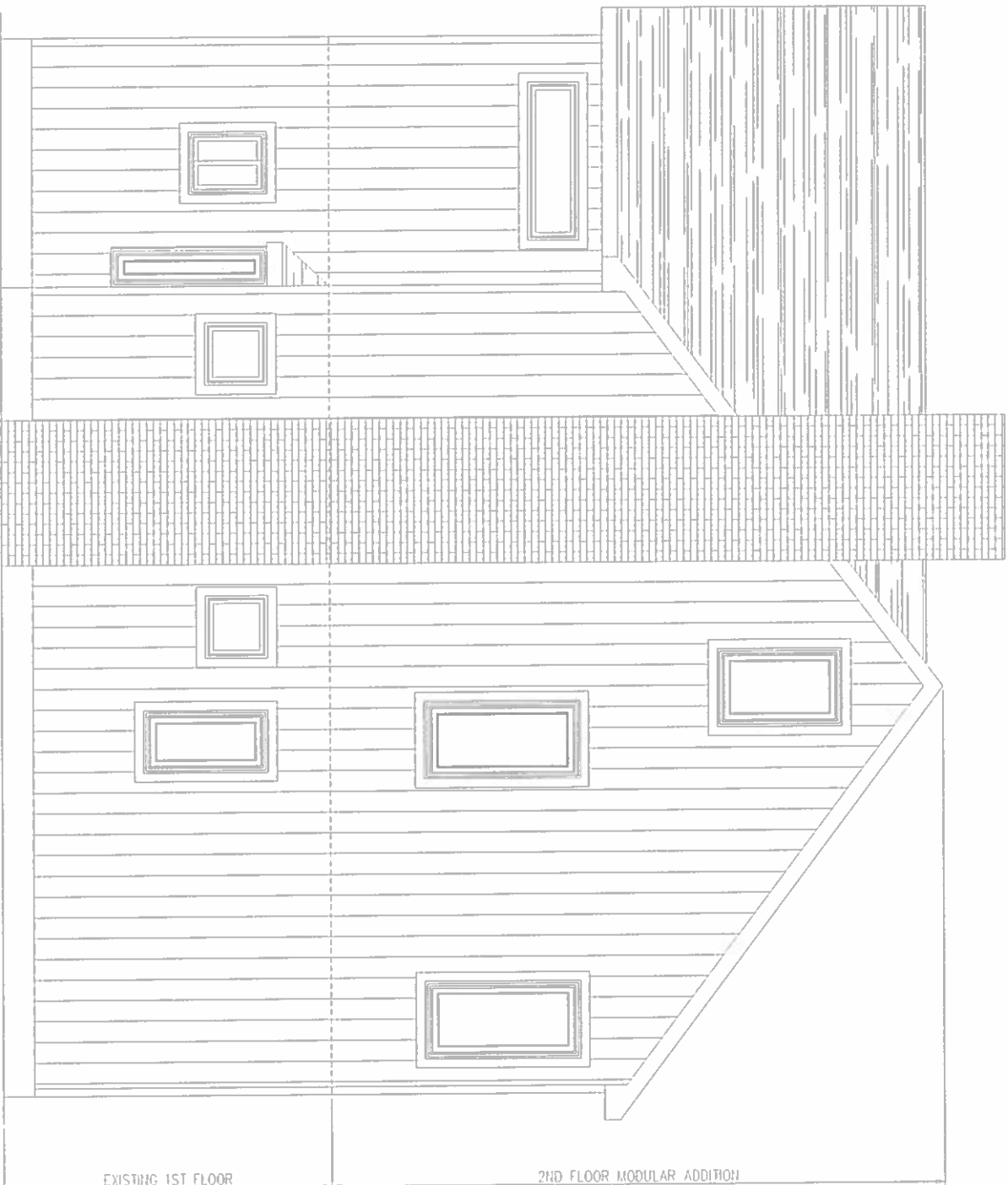
STATE: MA

SALES PERSON:
Frank Hanlon

DRAWING:

LEFT SIDE ELEVATION

SHEET: 4.2



RIGHT SIDE ELEVATION

PFS Corporation
Northeast Region
APPROVED
H Raup - 3
1/23/17
 Approval limited to
 Factory Built Portion



Durabuilt Homes, LLC.
 1910 North Old Trail
 Selinsgrove, PA, 17970
 (570) 743-2012

DATE	BY

DATE	BY
12/29/16	JS

DATE	BY
6/27/16	KJP
7/27/16	KJP
7/29/16	KJP
8/22/16	KJP
8/30/16	KJP
10/27/16	MDC
12/7/16	KJP
12/19/16	SW

BUILDER:
 Hybrid Built Homes
 67 Federal Avenue
 Quincy, MA 02169

RETAIL:
 Zaprauski
 95 Willard Circle
 Westwood, MA 02090

Tracking #16-0365

SQ.FT.: 1028

STATE: MA

SALES PERSON:
 Frank Honlgn

DRAWING:
 RIGHT SIDE ELEVATION

SHEET:
 4.3

PBR - DESIGNATES "PER BUILDERS REQUEST"
 1X4 CASING ON WINDOWS & DOORS

SITE LOCATION:
 95 WILLARD CIRCLE
 WESTWOOD, MA 02090
 NORFOLK COUNTY
 WIND SPEED: 105 MPH. Ex. B
 GSL: 40 PSF
 FLOOD ZONE: N/A
 SO FT LIVING SPACE
 1st FLOOR: EXISTING
 2nd FLOOR: 1028
 TOTAL SQ FT: 1028

INSULATION VALUES:
 CEILING (R-38 HD)
 EXT. WALLS (R-21)
 EXT. HOUSE WRAP

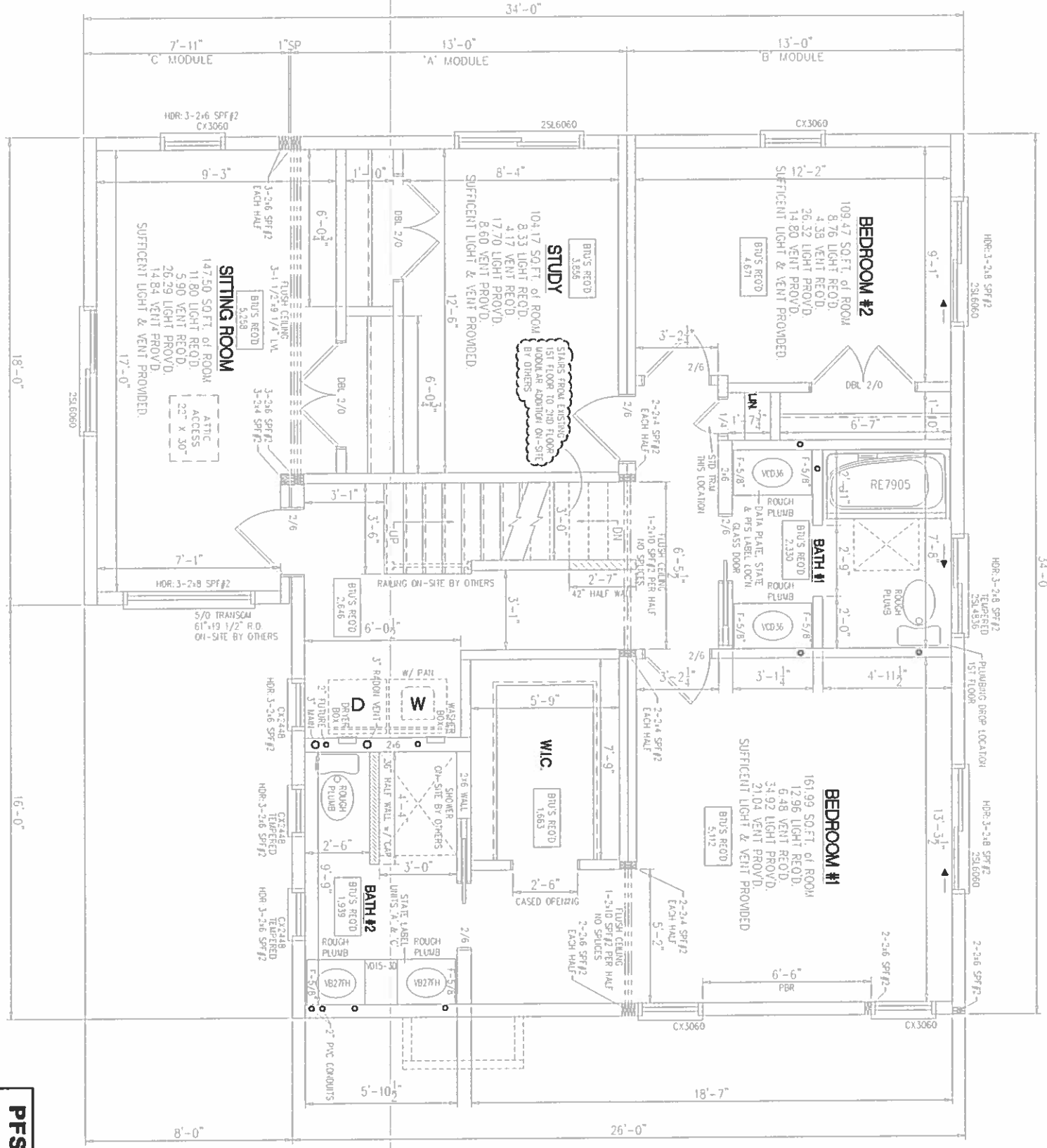
TOTAL BUS RECD 27,475

IF WINDOW SILL IS LESS THAN 24" A.F.F. AND MORE THAN 6'-0" ABOVE GRADE WINDOW GUARDS ARE TO BE SUPPLIED AND INSTALLED ON-SITE BY THE BUILDER (PER SECTION 612.2 OF 2009 IRC)

NOTE:
 WHOLE HOUSE VENTILATION (IF REQUIRED) WILL BE DONE ON-SITE BY THE BUILDER

NOTE:
 DUCT TIGHTNESS AND BLOWER DOOR TESTING TO-BE-DONE-BY-A-MA-CERTIFIED-HERS-RATER

NOTE: A 48 HOUR NOTIFICATION IS REQUIRED PRIOR TO THE SET. THE CSL OF RECORD WILL RELAY THIS TO THE LOCAL BUILDING AUTHORITY. IF ANY CORRECTIONS HAVE BEEN SEALED PRIOR TO INSPECTION, THE BUILDING OFFICIAL MAY REQUEST HAVING THE REMOVAL OF ELEMENTS THAT CONCEAL THE CONNECTIONS TO PROVIDE ACCESS. THIS WOULD NOT CONSTITUTE "DESTRUCTIVE DISASSEMBLY" ALL CONNECTIONS ON SITE MUST BE INSPECTED BY THE LOCAL AUTHORITY



NOTES:

1. 2x10 FLOOR SYSTEM @ 16" O.C. w/ 5/4" OSB SHTG
2. 2x6 EXTERIOR WALLS @ 16" O.C. w/ 7/16" OSB SHTG
3. 2x4 MARRIAGE WALLS @ 16" O.C.
4. EXISTING 1st STORY / 8'-0" 2nd STORY CLG
5. HEATING SYSTEM - OMIT ON-SITE BY OTHERS
6. 9/12 STORAGE TRUSS ROOF SYSTEM @ 16" O.C.

PFS Corporation
Northeast Region
APPROVED
H Raup - 3
1/23/17
 Approval limited to
 Factory Built Portion

SINGLE FAMILY ADDITION
STRETCH ENERGY CODE

APPLICABLE STATE CODES:
 MA SINGLE AND TWO-FAMILY DWELLING CODE (780 CMR) 8TH EDITION
 MA FUEL/GAS/PLUMBING (248 CMR)
 2009 INTERNATIONAL MECHANICAL CODE WITH MA AMENDMENTS
 2015 INTERNATIONAL ENERGY CONSERVATION CODE WITH MA AMENDMENTS
 2017 NATIONAL ELECTRICAL CODE WITH MA AMENDMENTS

WHICO DOUBLE HUNG WINDOW SCHEDULE

CALL OUT	TYPE	ROUGH OPENING	LIGHT sq.ft.	VENT sq.ft.	SQ FT	EGRESS
25L4936	SLIDING	48" x 36"	8.88	4.20	11.5	NO
25L6060	SLIDING	60" x 60"	17.7	8.6	24.5	YES
CX2448	CASEMENT	24" x 48"	5.69	3.89	7.7	NO
CX3048	CASEMENT	30" x 48"	6.8	4.9	9.72	YES
CX3060	CASEMENT	30" x 60"	8.59	6.24	12.18	YES



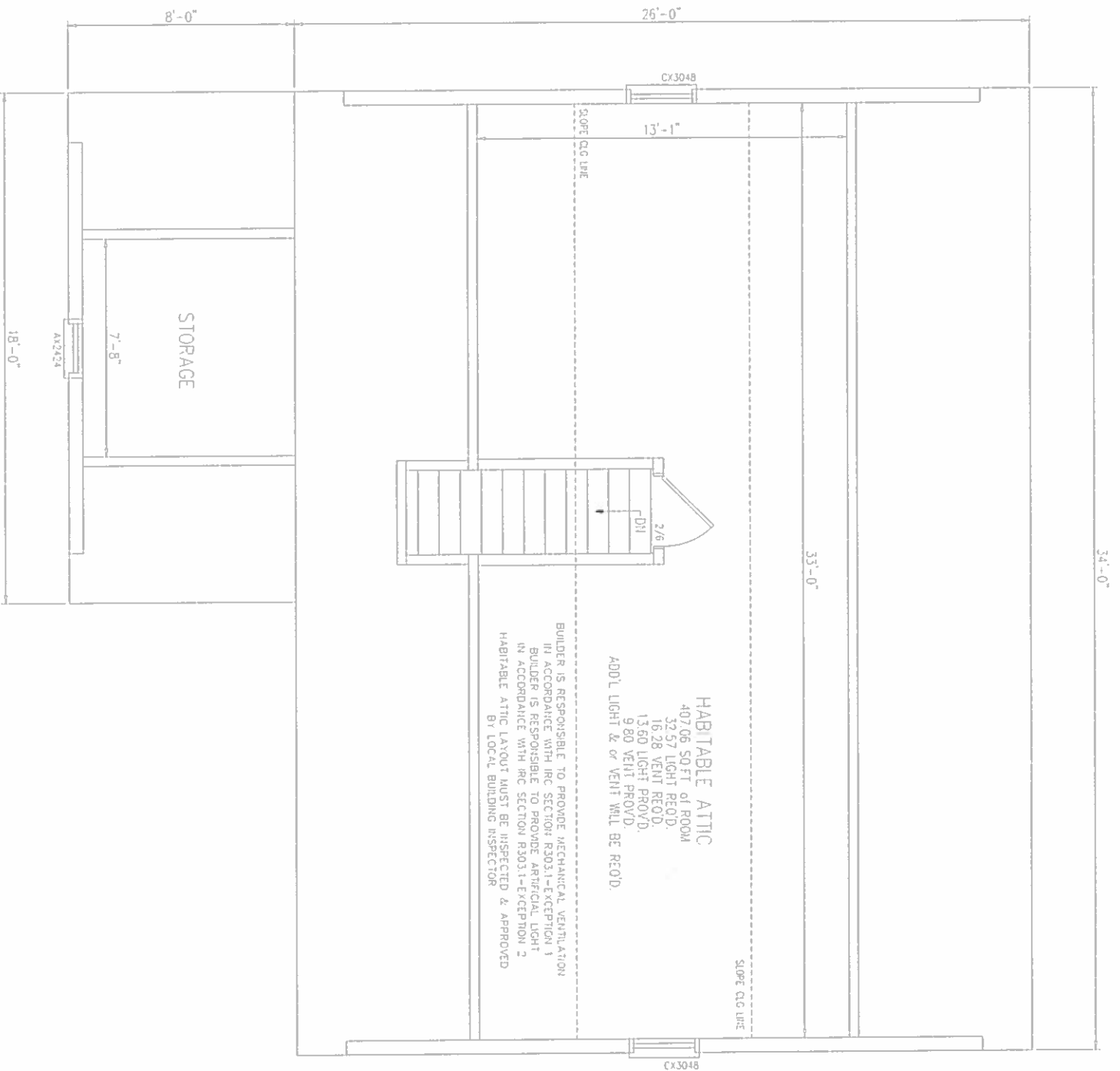
Durabuilt Homes, LLC
 1910 North Old Troil
 Selmsgrove, PA, 17870
 (570) 743-2012

DATE	BY
6/27/16	KJP
7/27/16	KJP
7/29/16	KJP
8/22/16	KJP
8/30/16	KJP
10/27/16	MDC
12/7/16	KJP
12/19/16	SW

BUILDER:
 Hybrid Built Homes
 67 Federal Avenue
 Quincy, MA 02169

RETAIL:
 Zaprauski
 95 Willard Circle
 Westwood, MA 02090

Tracking #: 16-0365
 SQ.FT.: 1028
 STATE: MA
 SALES PERSON: Frank Hanlon
 DRAWING: 2ND FLOOR PLAN LAYOUT
 SHEET: 21



PROPOSED 3RD FLOOR LAYOUT
 FINISHED ON-SITE BY OTHERS

HABITABLE ATTIC
 407.06 SQ. FT. of ROOM
 32.57 LIGHT REQ'D.
 16.28 VENT REQ'D.
 13.60 LIGHT PROV'D.
 9.80 VENT PROV'D.
 ADD'L LIGHT & or VENT WILL BE REQ'D.

BUILDER IS RESPONSIBLE TO PROVIDE MECHANICAL VENTILATION
 IN ACCORDANCE WITH IRC SECTION R303.1-EXCEPTION 1
 BUILDER IS RESPONSIBLE TO PROVIDE ARTIFICIAL LIGHT
 IN ACCORDANCE WITH IRC SECTION R303.1-EXCEPTION 2
 HABITABLE ATTIC LAYOUT MUST BE INSPECTED & APPROVED
 BY LOCAL BUILDING INSPECTOR

PFS Corporation
Northeast Region
APPROVED
H Raup - 3
 1/23/17
 Approval limited to
 Factory Built Portion



Durabuilt Homes, LLC.
 1910 North Old Trail
 Selinsgrove, PA, 17870
 (570) 743-2012

DATE	BY

DATE	BY
12/29/16	JS
1/13/17	JS

DATE	BY
6/27/16	KJP
7/27/16	KJP
7/29/16	KJP
8/22/16	KJP
8/30/16	KJP
10/27/16	MDC
12/7/16	KJP
12/19/16	SW

BUILDER:
 Hybrid Built Homes
 67 Federal Avenue
 Quincy, MA 02169

RETAIL:
 Zaprauski
 95 Willard Circle
 Westwood, MA 02090

Tracking #: 16-0365
 SQ FT.: 1028
 STATE: MA
 SALES PERSON:
 Frank Honlon
 DRAWING:
 3RD. FLOOR
 PLAN LAYOUT
 SHEET: 2.2