



# Town of Westwood

## Canton/Everett/Forbes Traffic Calming Update

March 25, 2014



# Agenda



- Project Goals
- Plan Development
- Review Traffic Calming Measures
- Next Steps



# Phase 1 Plan



## OPTION 3-2-1



### LEGEND





# Project Goals



1. Reduce Travel Speeds
2. Increase Travel Time Through Corridor
3. Reduce Cut-Through Traffic



# Plan Development



- 5/29/2008 Public Meeting
- 7/1/2008 Public Meeting
- 9/9/2008 Public Meeting
- 9/16/2008 BOS Presentation
- 9/25/2008 Public Meeting
- 10/6/2008 BOS Presentation
- 10/20/2008 BOS Presentation
- 11/3/2008 BOS Presentation
- 9/30/2009 NCC Presentation
- 11/18/2009 NCC Presentation
- 4/29/2010 Public Meeting
- 2/7/2013 Public Meeting
- 2/28/2013 Public Meeting
- 3/12/2013 Public Meeting
- Fall 2013 90% Design
- 3/2/2014 NCC Presentation
- 3/19/2014 NCC Presentation
- 3/25/2014 Public Meeting



Mailings, Web Site Postings, Surveys, and a Homework Assignment



# Plan Measures



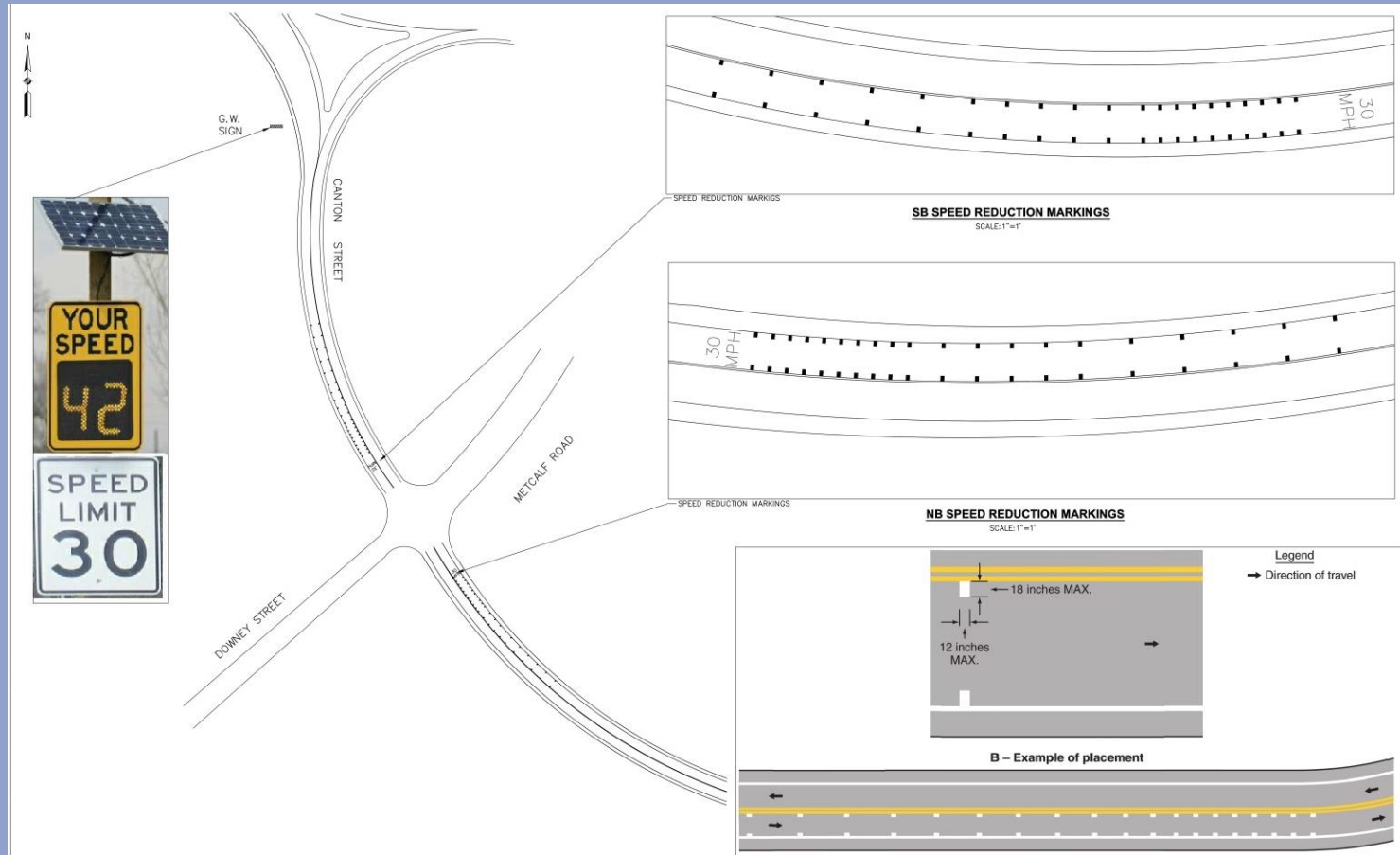
- Realigned Intersections
- Slow Points
- Advance Warning Signs



# Canton Street Between Rotary And Blue Hill Drive



- Speed Reduction Markings
- Dynamic Feedback Speed Sign

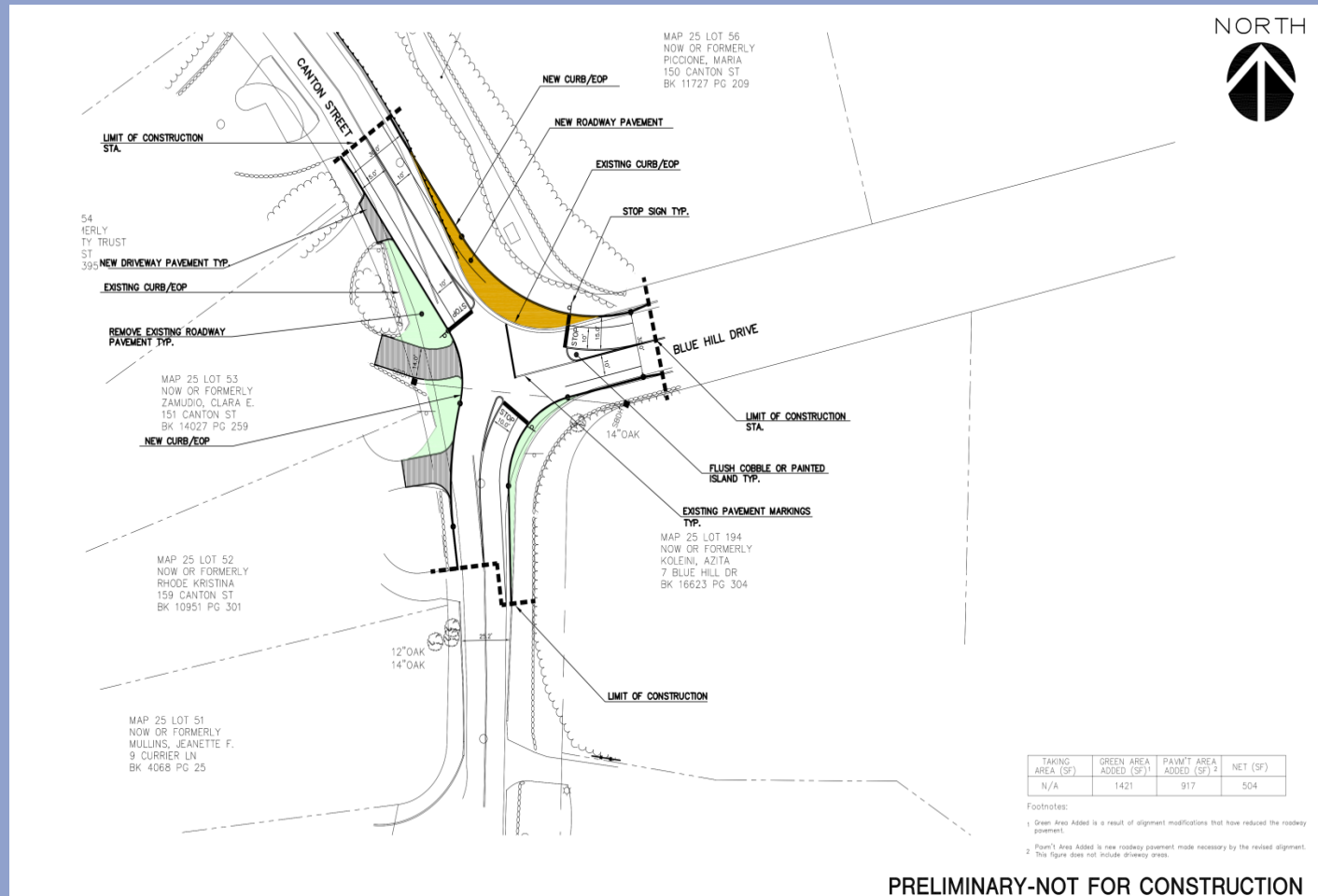




# Canton Street At Blue Hill Drive



- Realigned Intersection
- Advanced Warning Signs
- STOP Sign Control



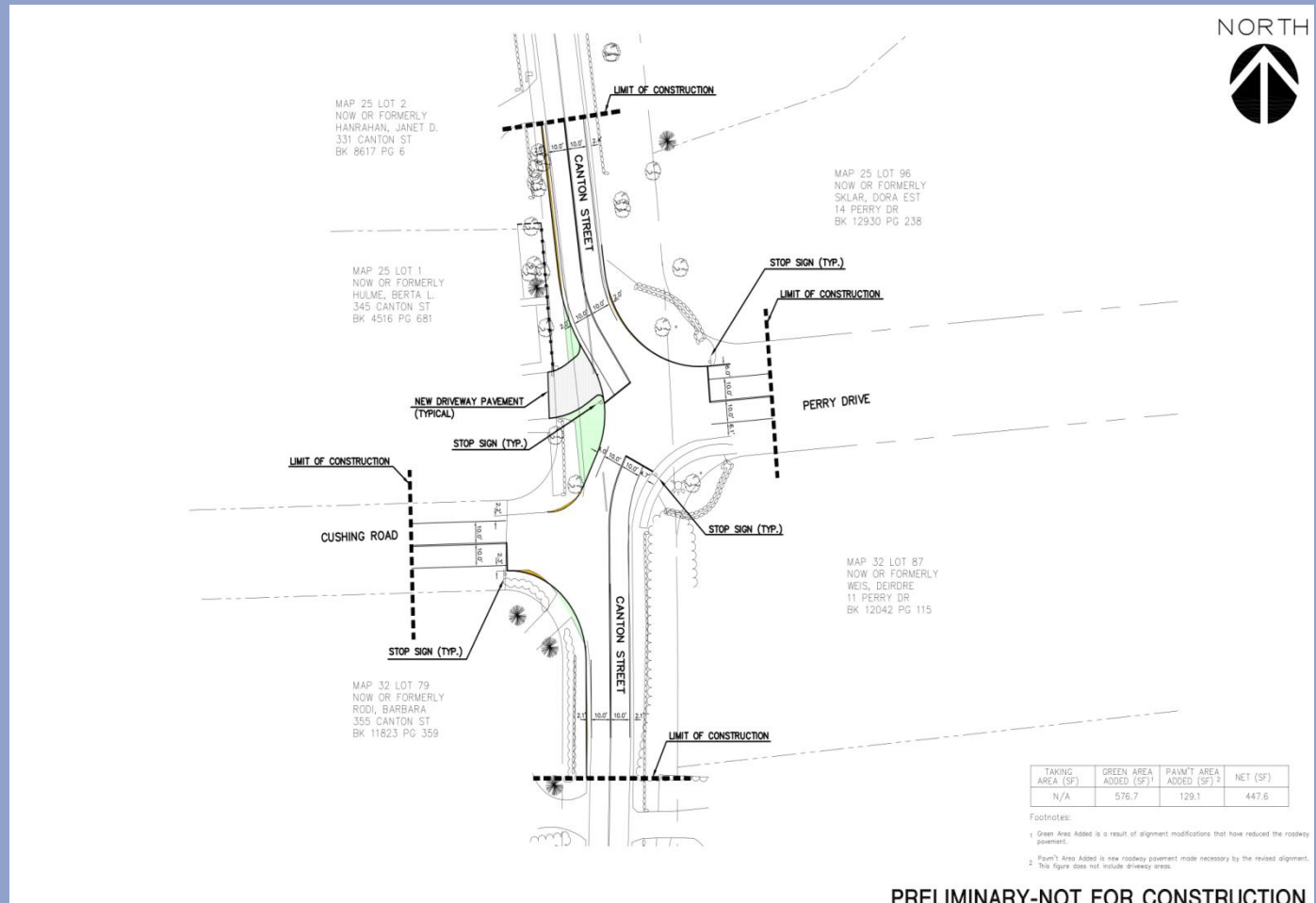




# Canton Street At Perry Drive And Cushing Road



- Realigned Intersection
- Advanced Warning Signs
- STOP Sign Control

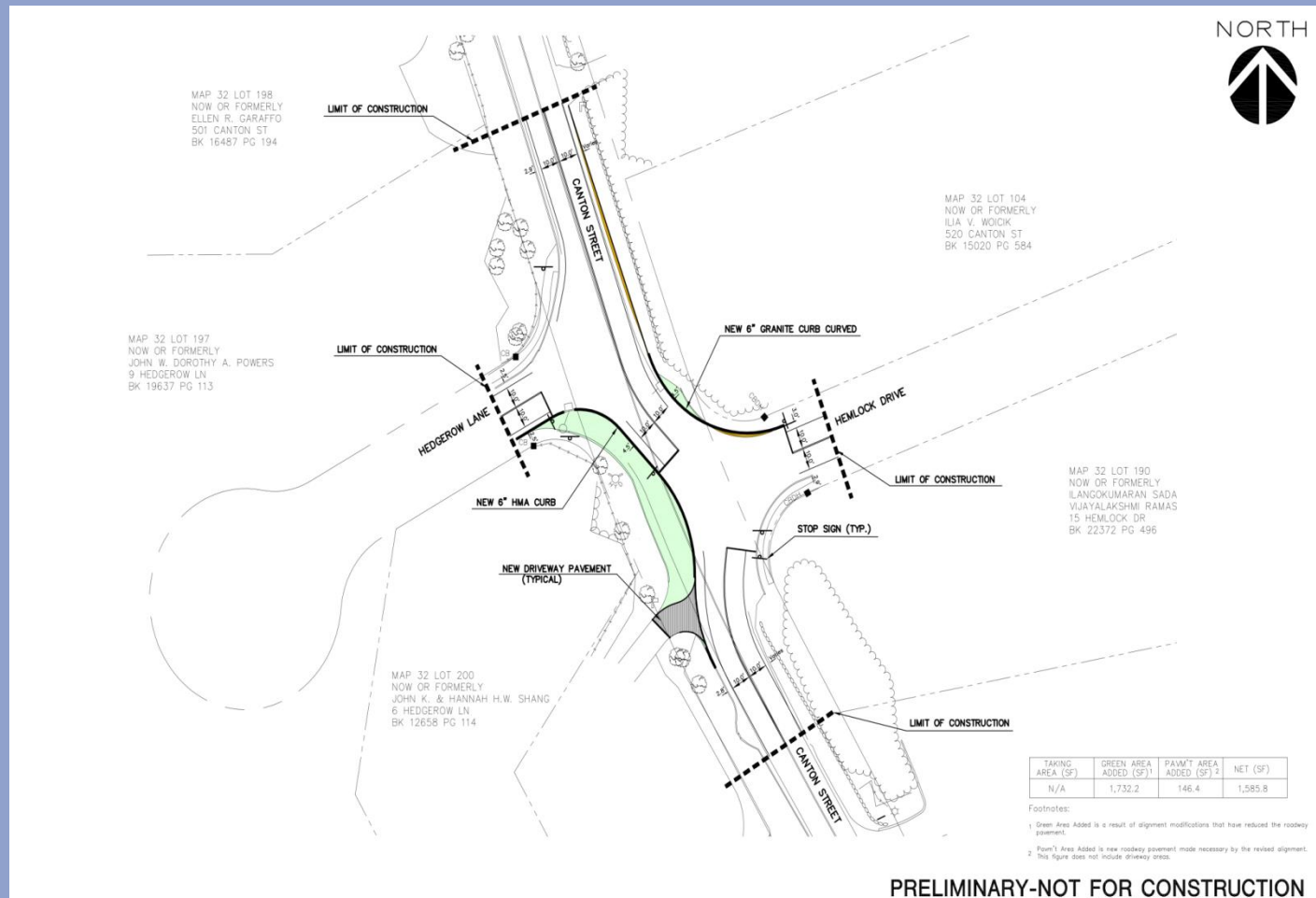




# Canton Street At Hemlock Drive And Hedgerow Lane



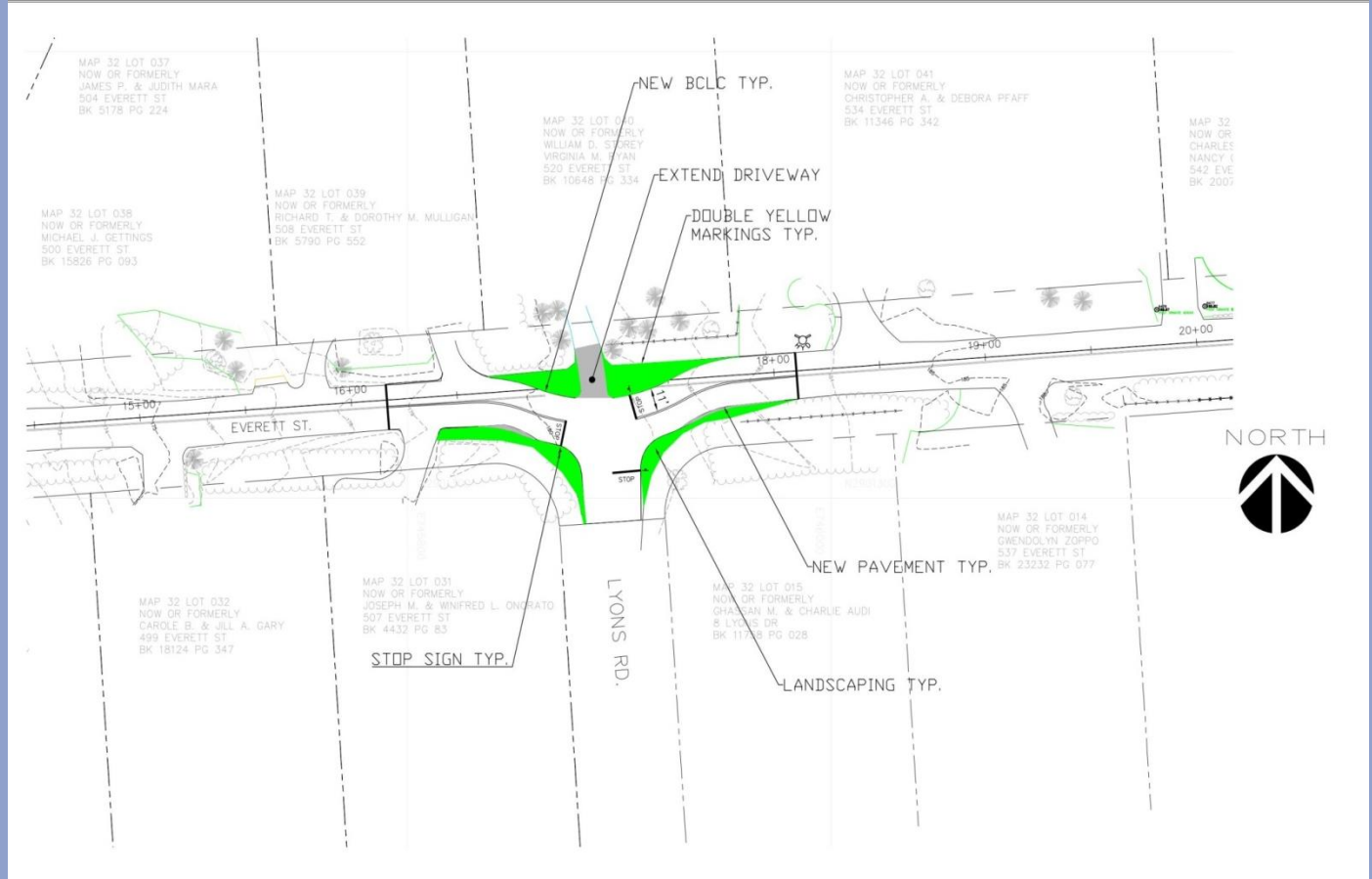
- Realigned Intersection
- Advanced Warning Signs
- STOP Sign Control





# Everett Street At Lyons Road

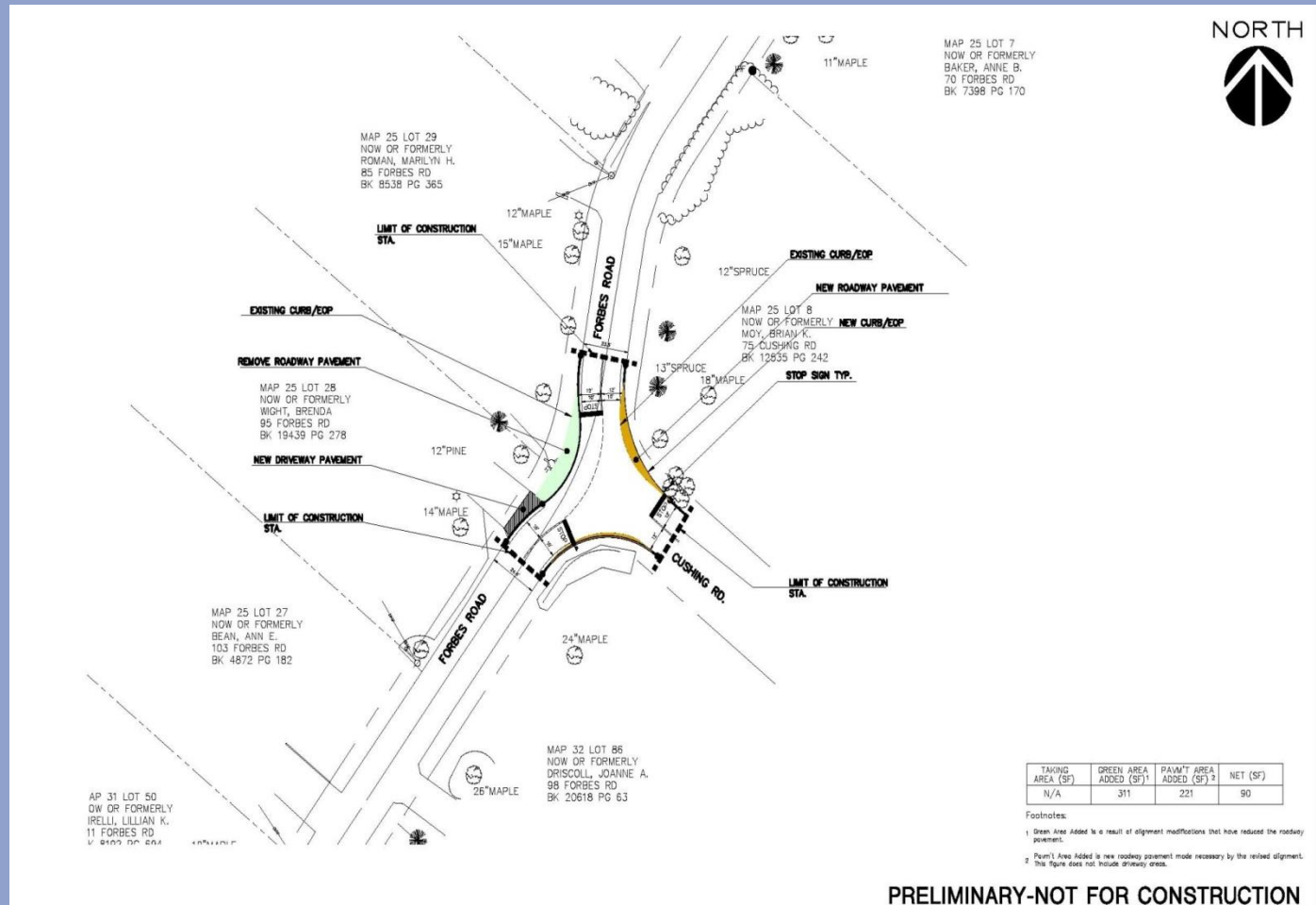
- Realigned Intersection
- Advanced Warning Signs
- STOP Sign Control





# Forbes Road at Cushing Road

- Realigned Intersection
- Advanced Warning Signs
- STOP Sign Control

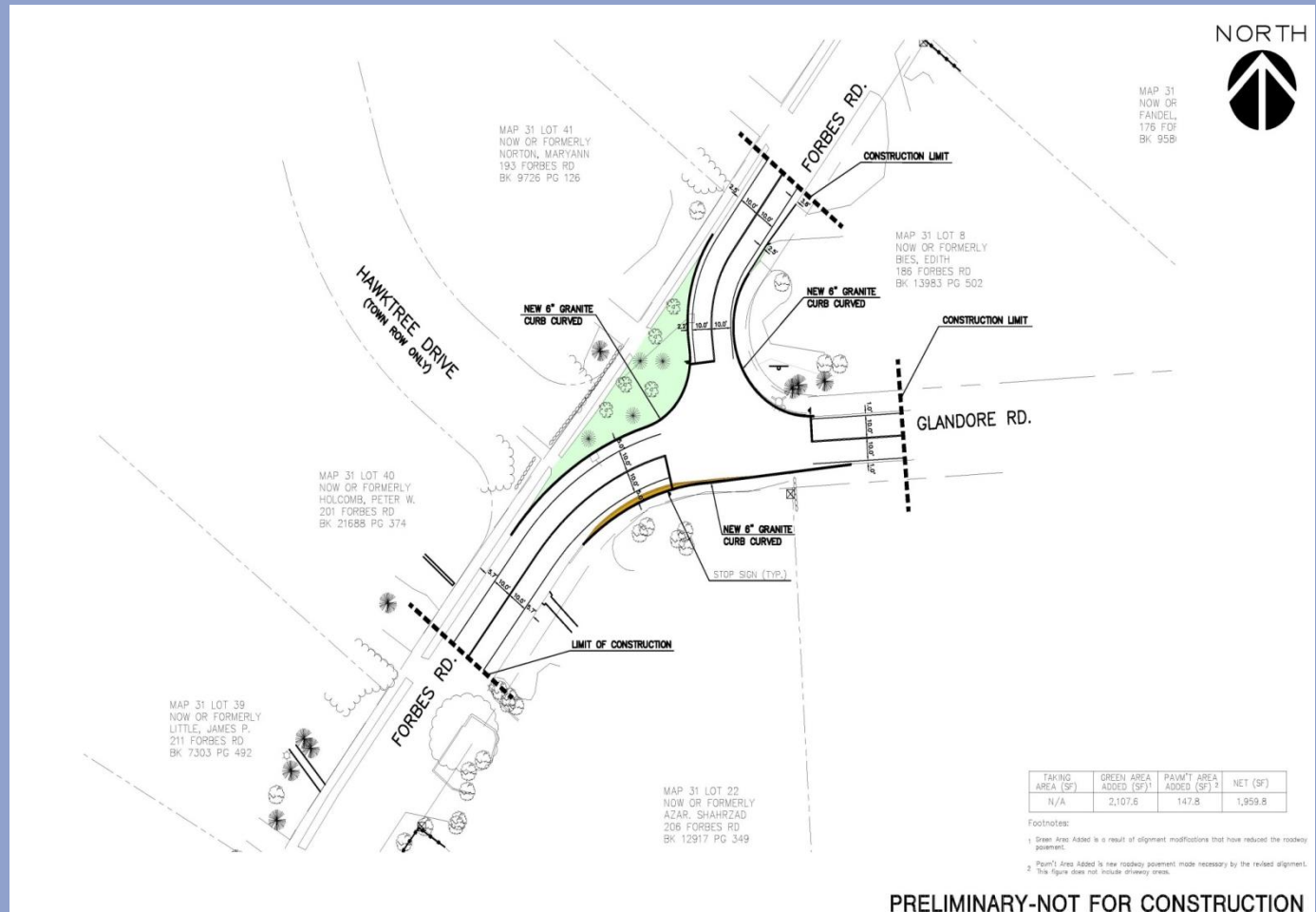




# Forbes Road at Glandore Road



- Realigned Intersection
- Advanced Warning Signs
- STOP Sign Control

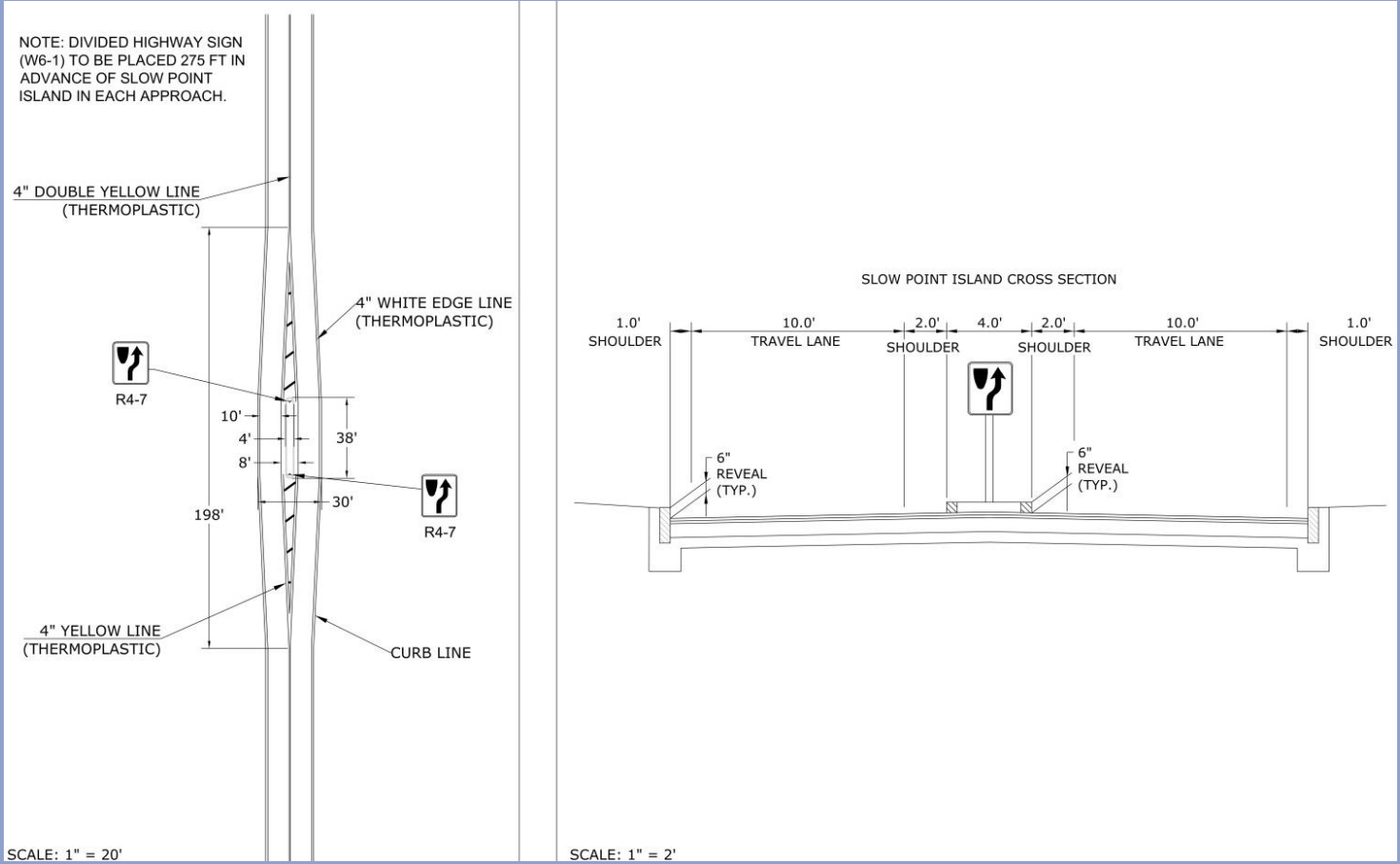


PRELIMINARY-NOT FOR CONSTRUCTION



# Canton Street, Two Locations ("Slow Point Islands")

- Raised Splitter Islands (4' wide)
- 10' Travel Lanes with 2' Shoulders

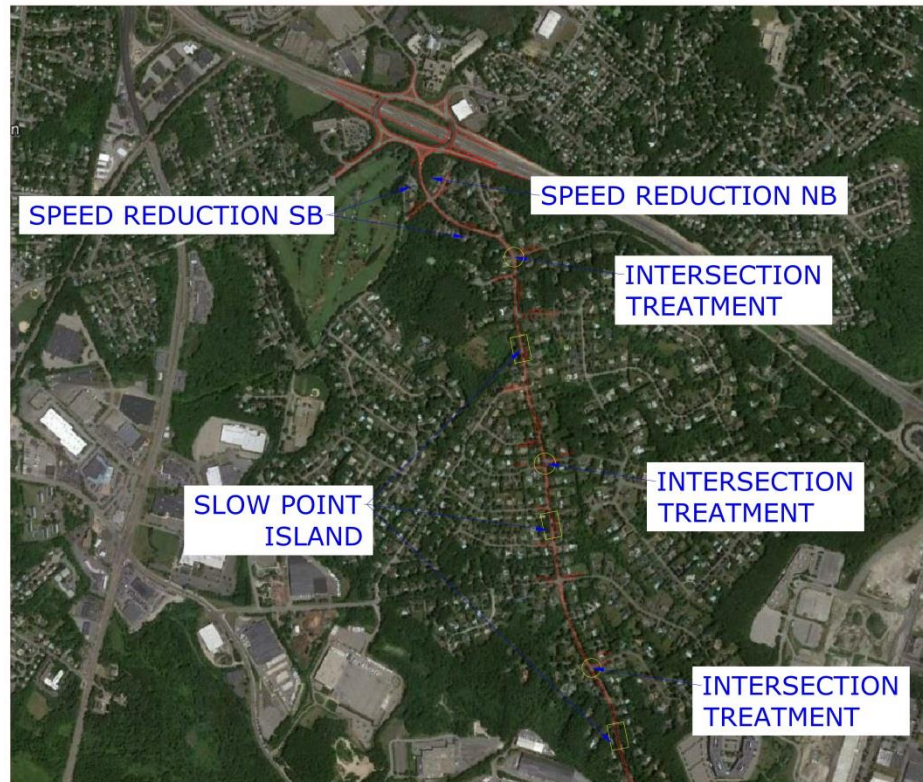




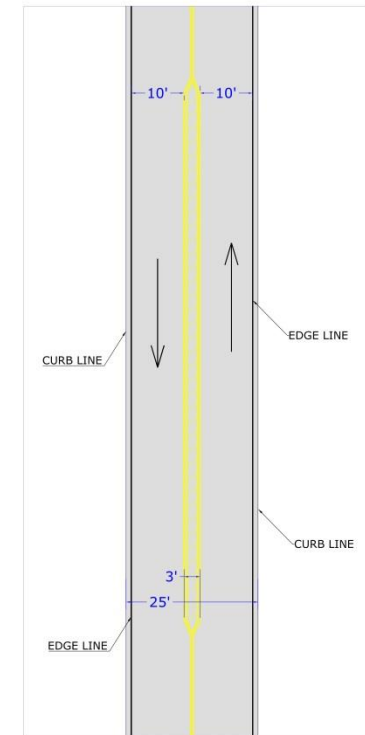
# Canton Street, Various Locations ("Slow Point Island")



- Splitter Islands (3" wide)
- 10' Travel Lanes



SLOW POINT ISLAND





# Next Steps



- NCC Approval
- Field Testing
- Finalize Design
- Construction





Thank You



**BETA**

ENGINEERING SUCCESS TOGETHER







# Thresholds

## Canton Street (Directional)

- +60 Vehicles / Hour AM Peak, and
- +60 Vehicles / Hour PM Peak

## Everett and Forbes (Directional)

- +30 Vehicles / Hour AM Peak, and
- +30 Vehicles / Hour PM Peak



# Threshold Approach



- If Threshold Reached – Validation Process Begins
- If Validated – Neighborhood Coordination Begins
- Measures Identified (If Necessary)
- Neighborhood Approval
- Duration – Until 2 Years After Latest CO