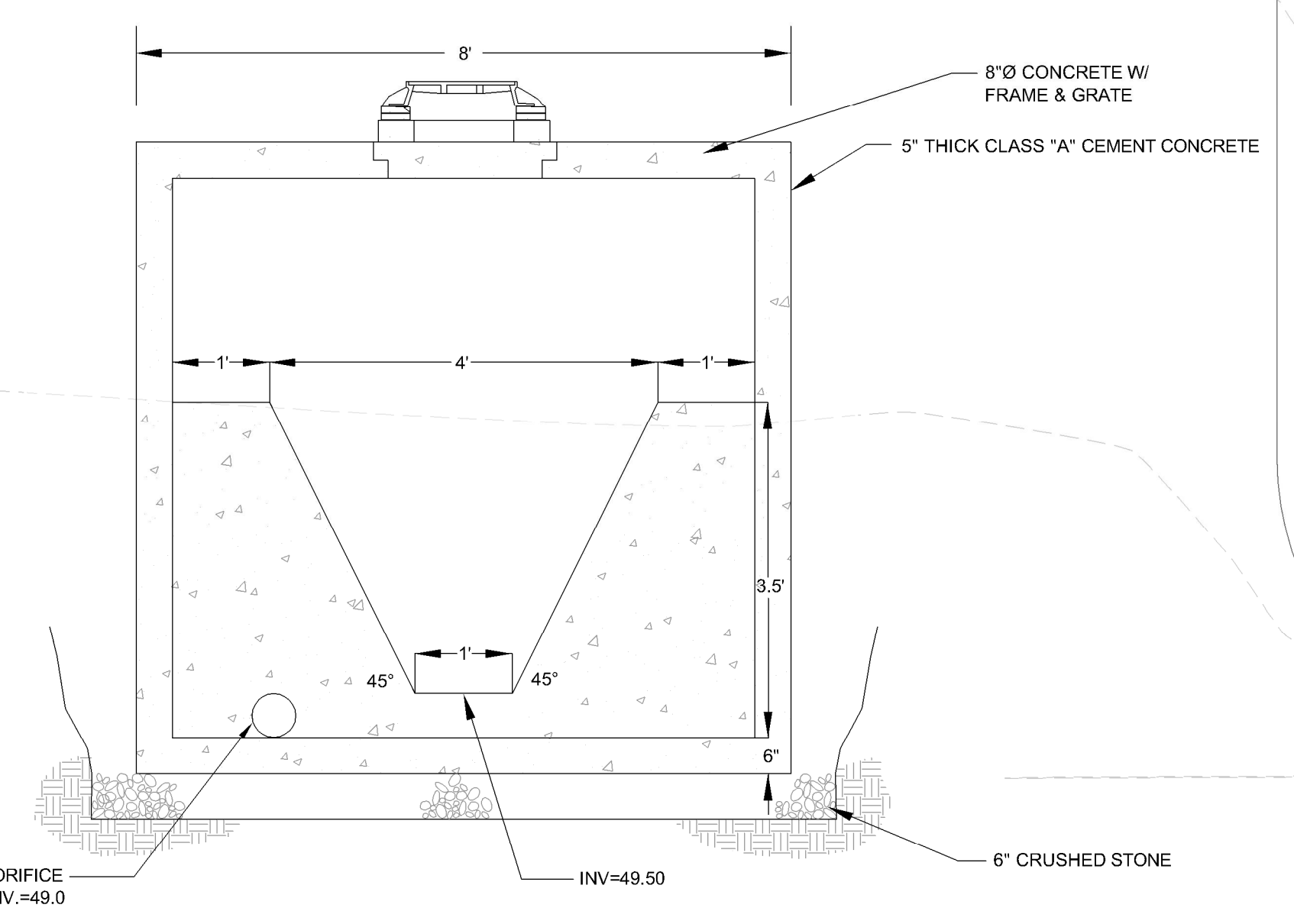
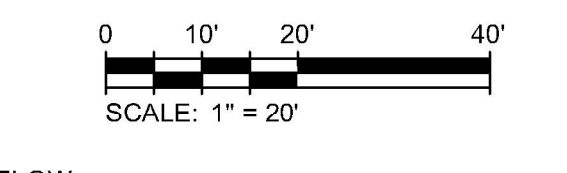


LEGEND

	AQUATIC - ELEV. 47.0 & BELOW
	LOW MARSH - ELEV. 47.0 - 48.5
	HIGH MARSH - ELEV. 48.5 - 49.0



1. INSTALL CONCRETE ANTI-SLEEP COLLARS ON ALL PIPES AND PENETRATIONS THROUGH EARTHEN BERMS THAT IMPOUND WATER.

Table 1 South Basin Plant Species (2-inch Plugs) – Aquatic, Low Marsh, and High Marsh Habitats

Common Name	Scientific Name	Inundation Depth (ft)	Habitat	Planting Elevation	Rate of Spread	Density
sweet flag	<i>Acorus americana</i>	<0.5	high marsh	48.5 to 49	moderate	2' OC
water plantain	<i>Alisma subcordatum</i>	<0.5	high marsh	48.5 to 49	moderate	2' OC
blue joint grass	<i>Calamagrostis Canadensis</i>	<0.5	high marsh	48.5 to 49	slow	1' OC
blue flag iris	<i>Iris versicolor</i>	<0.5	high marsh	48.5 to 49	slow	1' OC
rice cutgrass	<i>Leersia oryzoides</i>	<0.5	high marsh	48.5 to 49	moderate	2' OC
yellow water lily	<i>Nuphar luteum</i>	1-3	aquatic/low marsh	<47 to 48	slow	1' OC
white water lily	<i>Nymphaea odorata</i>	1-3	aquatic/low marsh	<47 to 48	slow	1' OC
arrow arum	<i>Peltandra virginica</i>	<1	low/high marsh	48 to 49	slow	1.5' OC
pickereelweed	<i>Potentilla cordata</i>	<1	low/high marsh	48 to 49	moderate	2' OC
Sago pondweed	<i>Potamogeton pectinatus</i>	<3	aquatic	<47	rapid	4' OC
duck potato	<i>Sagittaria latifolia</i>	<2	low/high marsh	47 to 49	rapid	4' OC
hardstem bulrush	<i>Schoenoplectus acutus</i>	<3	aquatic/low/high marsh	47 to 49	rapid	4' OC
soft stem bulrush	<i>Schoenoplectus tabernaemontani</i>	<1	low/high marsh	48 to 49	rapid	4' OC
common three square	<i>Schoenoplectus pungens</i>	<1	low/high marsh	48 to 49	rapid	4' OC
green bulrush	<i>Scirpus atrovirens</i>	<0.25	high marsh	48.75 to 49	rapid	4' OC
bur-reed	<i>Sparganium americanum</i>	<0.5	high marsh	48.5 to 49	rapid	4' OC
wild celery	<i>Vallisneria Americana</i>	<3	aquatic/low marsh	<47 to 48	rapid	6' OC

Table 2 South Basin Seed Mix – Wet Meadow Habitat (elevation 49 to 50)

Common Name	Scientific Name	Indicator Status
water plantain	<i>Alisma subcordatum</i>	OBL
swamp milkweed	<i>Asclepias incarnata</i>	OBL
noddling bur marigold	<i>Bidens cernua</i>	OBL
brittly sedge	<i>Carex comosa</i>	OBL
fringed sedge	<i>Carex crinita</i>	OBL
hog sedge	<i>Carex lupulina</i>	OBL
lurid sedge	<i>Carex lurida</i>	OBL
blunt broom sedge	<i>Carex scoparia</i>	FACW
fox sedge	<i>Carex vulpinoidea</i>	OBL
spotted Joe-pye weed	<i>Eutrochium maculatum</i>	OBL
boneset	<i>Eupatorium perfoliatum</i>	FACW
rattlesnake grass	<i>Glyceria canadensis</i>	OBL
American manna grass	<i>Glyceria grandis</i>	OBL
soft rush	<i>Juncus effusus</i>	OBL
monkey flower	<i>Nimulus tinctorius</i>	OBL
sensitive fern	<i>Onoclea sensibilis</i>	FACW
green bulrush	<i>Scirpus atrovirens</i>	OBL
wool grass	<i>Scirpus cyperinus</i>	OBL
soft stem bulrush	<i>Schoenoplectus tabernaemontani</i>	OBL
New England aster	<i>Symphoricarpon novae-angliae</i>	FACW
blue vervain	<i>Verbena hastata</i>	FACW

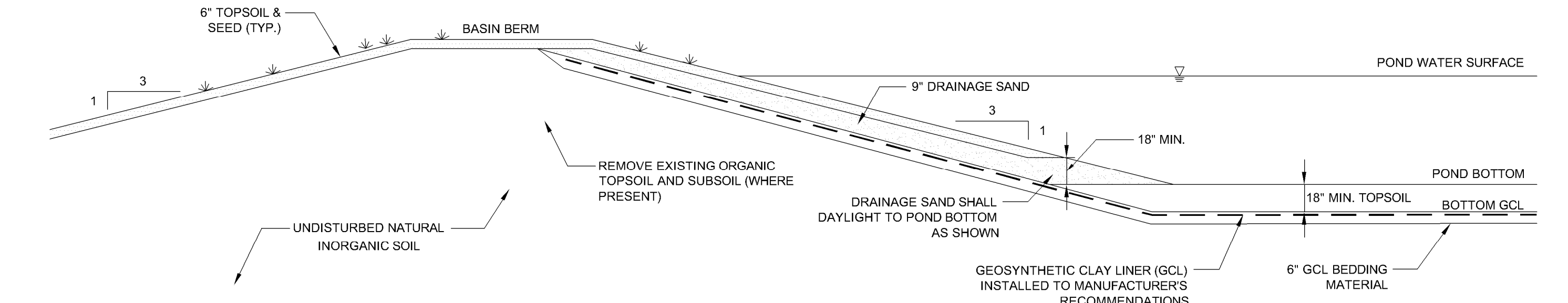
Note:
Planting shown hereon shall be installed under the direction of a Wetland Biologist. Aquatic, Low Marsh and High Marsh plants (2" root plugs) locations shall be determined in the field during construction by the Wetland Biologist.

Table 3 Seed Mix – Upland Habitat (elevation 50 to 55)

Common Name	Scientific Name
big bluestem	<i>Andropogon gerardii</i>
common milkweed	<i>Asclepias syriaca</i>
partridge pea	<i>Chamaecrista fasciculata</i>
showy tick trefoil	<i>Desmodium canadense</i>
deer tongue	<i>Dichanthium clandestinum</i>
Virginia wild eye	<i>Elymus virginicus</i>
grass leaved goldenrod	<i>Euthamia graminifolia</i>
spotted Joe-pye weed	<i>Eutrochium maculatum</i>
creeping red fescue	<i>Festuca rubra</i>
ox eye sunflower	<i>Helopsis helianthoides</i>
switch grass	<i>Panicum virgatum</i>
black eyed susan	<i>Rudbeckia hirta</i>
little bluestem	<i>Schizochyrium scoparium</i>
early goldenrod	<i>Solidago yanca</i>
Indian grass	<i>Sorghastrum nutans</i>
New England aster	<i>Symphoricarpon novae-angliae</i>
blue vervain	<i>Verbena hastata</i>

Table 4 South Basin Tree and Shrub Species (elevation 49 to 55)

Common Name	Scientific Name	Symbol	Indicator Status	Min. Size (ft)
Serviceberry	<i>Amelanchier canadensis</i>	AC	FAC	3-4
yellow birch	<i>Betula alleghaniensis</i>	BA	FAC	4-6
buttonbush	<i>Cephalanthus occidentalis</i>	CO	OBL	3-4
winterberry	<i>Ilex verticillata</i>	IV	FACW+	3-4
black tupelo	<i>Nyssa sylvatica</i>	NS	OBL	4-6
sycamore	<i>Platanus occidentalis</i>	PO	FACW	4-6
elderberry	<i>Sambucus Canadensis</i>	SC	FACW	3-4
cranberrybush	<i>Viburnum trilobum</i>	VT	FACW	3-4



N.T.S.