

3/18/2013 11:05:07 AM - P:\3659127-3659-12003\CAD\SHEETFILES\SITE DEVELOPMENT PLANS\1-01 EXISTING LOTTING PLAN.DWG - BECKWITH, JOHN

TETRA TECH
 www.tetra.tech.com
 One Grant Street
 Framingham, MA 01701
 PHONE: 508.552.2000 FAX: 508.552.2001

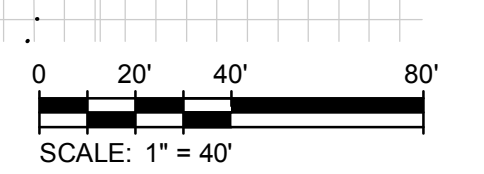
MARK	DATE	DESCRIPTION	BY
1	10/9/12	Preliminary Site Development Plans	N.H.C.
2	11/30/12	Revised Site Development Plans	N.H.C.
3	03/22/13	Revised Site Development Plans	N.H.C.

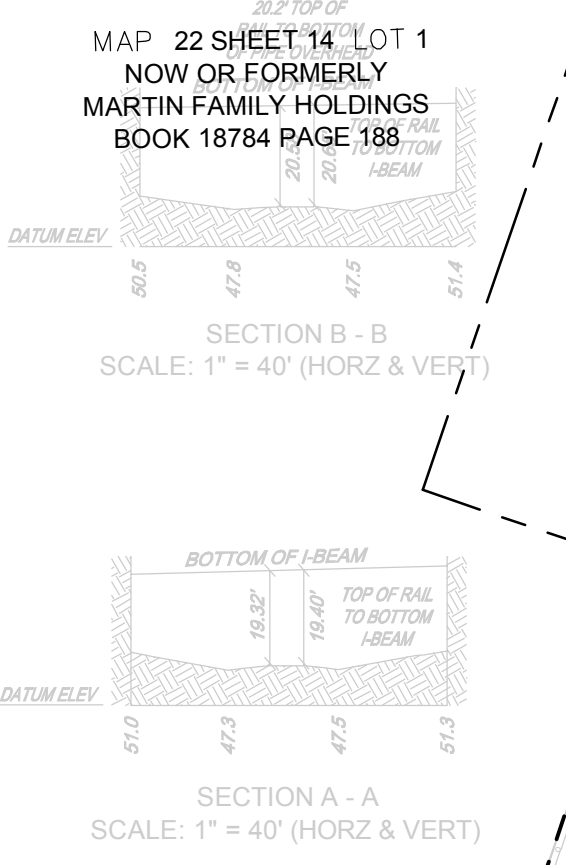
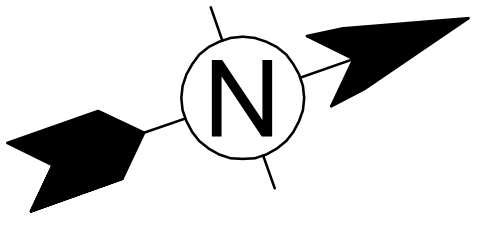
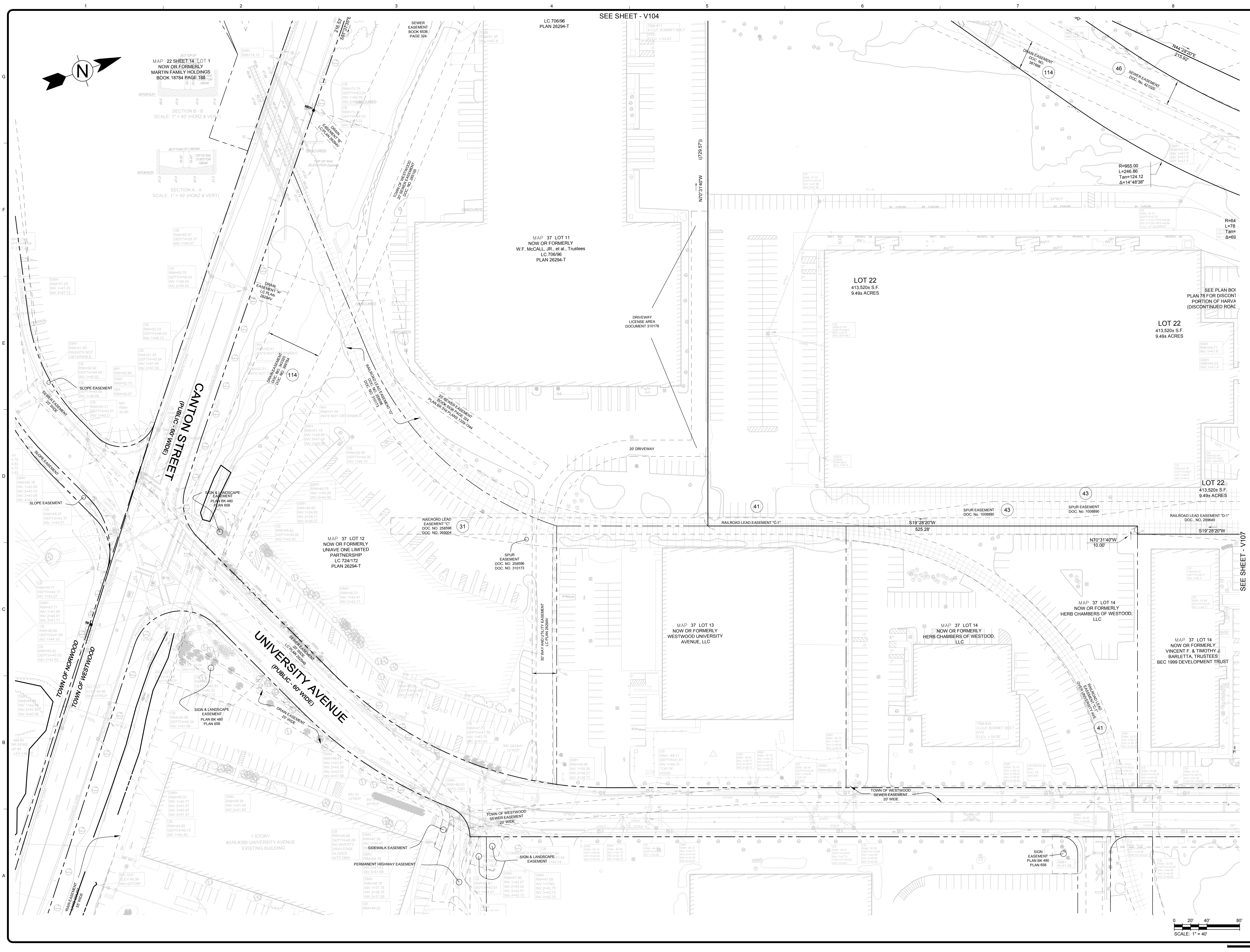
Client: Westwood Marketplace Holdings LLC
 Proj. Loc.: University Ave, Westwood, MA
 University Station - University Avenue
 Redevelopment
 Existing Lotting Plan

Project No.: 127-3659-12003
 Designed By: A.F.T./M.K.M.
 Drawn By: J.V.B./S.C.V.
 Checked By: N.H.C./R.F.D.

V-107

Copyright: Tetra Tech





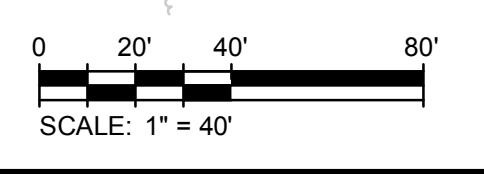
MAP 37 LOT 11
NOW OR FORMERLY
W.F. McCALL, JR., et al., Trustees
LC 706/96
PLAN 26294-T

MAP 37 LOT 12
NOW OR FORMERLY
UNIAVE ONE LIMITED PARTNERSHIP
LC 724/172
PLAN 26294-T

MAP 37 LOT 13
NOW OR FORMERLY
WESTWOOD UNIVERSITY AVENUE, LLC

MAP 37 LOT 14
NOW OR FORMERLY
HERB CHAMBERS OF WESTWOOD, LLC

MAP 37 LOT 14
NOW OR FORMERLY
VINCENT F. & TIMOTHY J. BARLETTA, TRUSTEES
BEC 1999 DEVELOPMENT TRUST



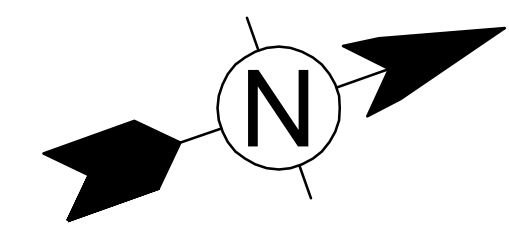
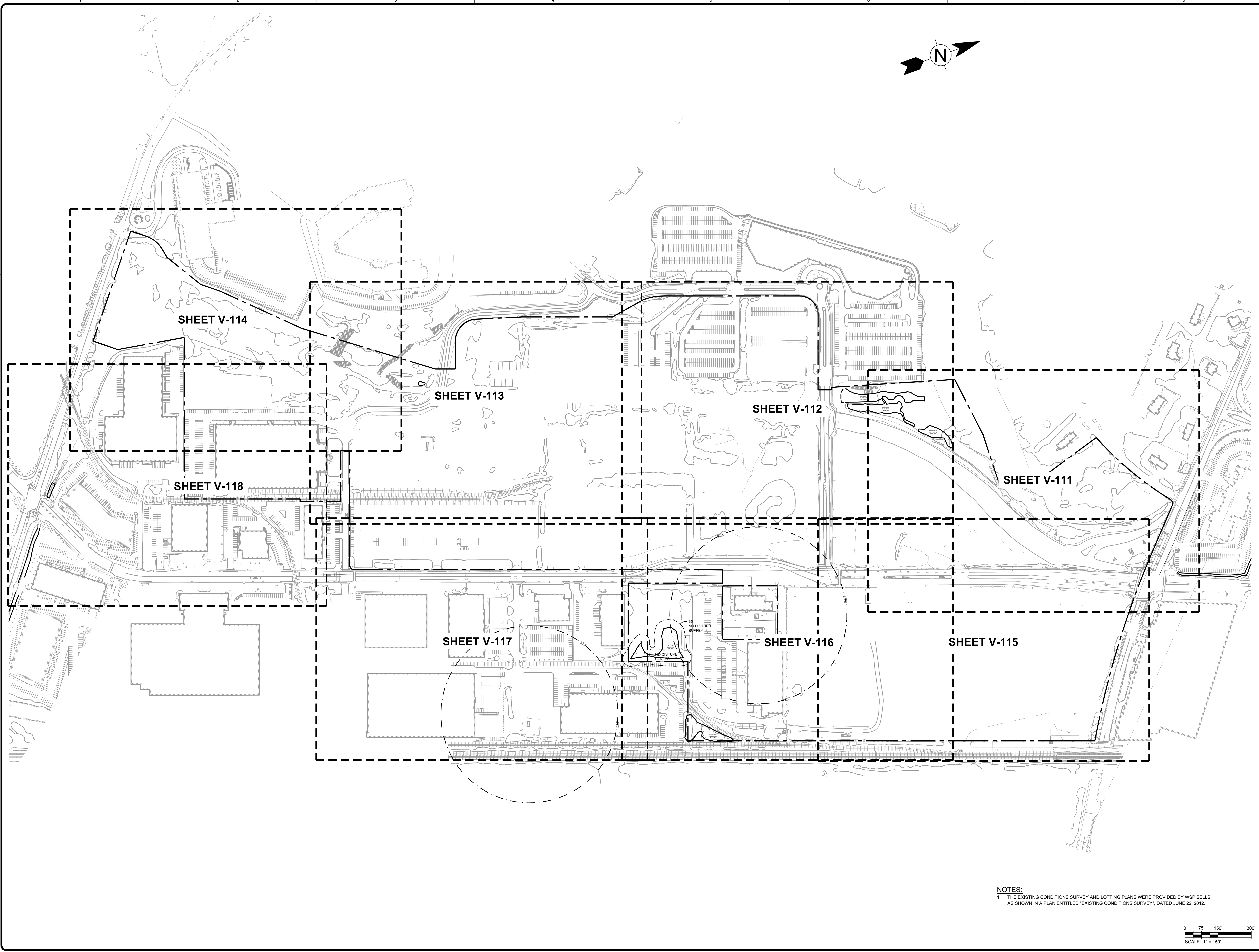
MARK	DATE	DESCRIPTION	BY
1	10/01/12	Preliminary Site Development Plans	N.H.C.
2	11/03/12	Revised Site Development Plans	N.H.C.
3	03/22/13	Revised Site Development Plans	N.H.C.

Client: Westwood Marketplace Holdings LLC
Proj. Loc.: University Ave., Westwood, MA
Project: University Station - University Avenue Redevelopment
Existing Lotting Plan

Project No.: 127-3659-12003
Designed By: A.F.T./M.K.M.
Drawn By: J.V.B./S.C.V.
Checked By: N.H.C./R.F.D.

3/18/2013 11:05:22 AM - P:\3659\127-3659-12003\CAD\SHEETFILES\SITE DEVELOPMENT PLANS\01 EXISTING LOTTING PLAN.DWG - BECKWITH, JOHN

3/18/2013 11:08:04 AM - P:\3659127-3659-12003\CAD\SHEETFILES\SITE DEVELOPMENT PLANS\111 EXISTING CONDITIONS PLAN.DWG - BECKWITH, JOHN



SHEET V-114

SHEET V-113

SHEET V-112

SHEET V-111

SHEET V-118

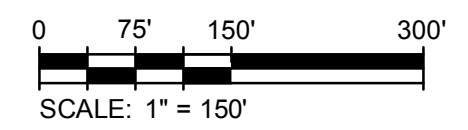
SHEET V-117

SHEET V-116

SHEET V-115

35' NO DISTURB BUFFER

NOTES:
 1. THE EXISTING CONDITIONS SURVEY AND LOTTING PLANS WERE PROVIDED BY WSP SELLS AS SHOWN IN A PLAN ENTITLED "EXISTING CONDITIONS SURVEY", DATED JUNE 22, 2012.



www.tetra.tech.com
 One Grant Street
 Framingham, MA 01701
 PHONE: (508) 562-2000 FAX: (508) 562-2001

MARK	DATE	DESCRIPTION	BY
1	10/01/12	Preliminary Site Development Plans	N.H.C.
2	11/01/12	Revised Site Development Plans	N.H.C.
3	03/22/13	Revised Site Development Plans	N.H.C.

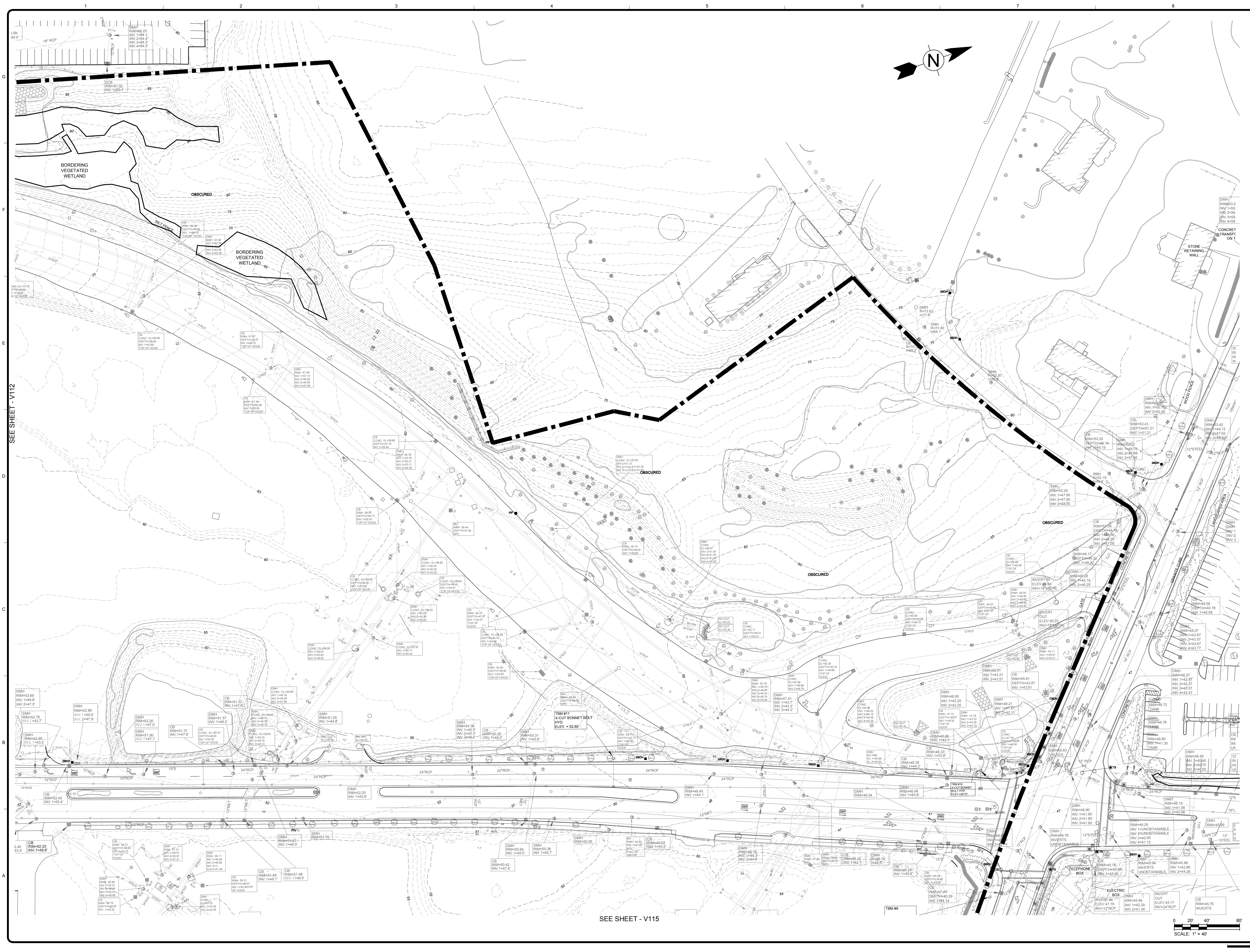
Client: Westwood Marketplace Holdings LLC
 Proj. Loc.: University Ave, Westwood, MA
 University Station - University Avenue
 Redevelopment

Key Sheet for Existing Conditions Plan

Project No.: 127-3659-12003
 Designed By: A.F.T./M.K.M.
 Drawn By: J.V.B./S.C.V.
 Checked By: N.H.C./R.F.D.

V-110

Copyright: Tetra Tech
 Bar Measures 1 inch



MARK	DATE	DESCRIPTION	BY
1	10/01/12	Preliminary Site Development Plans	N.H.C.
2	11/03/12	Revised Site Development Plans	N.H.C.
3	03/22/13	Revised Site Development Plans	N.H.C.

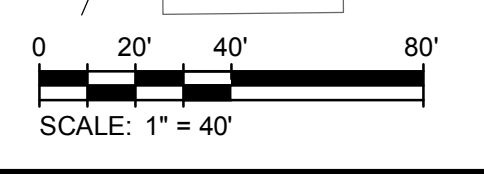
Client: Washwood Merapace Holdings LLC
Proj. Loc.: University Ave., Westwood, MA
University Station - University Avenue
Redevelopment

Project No.: 127-3659-12003
Designed By: A.F.T./M.K.M.
Drawn By: J.V.B./S.C.V.
Checked By: N.H.C./R.F.D.

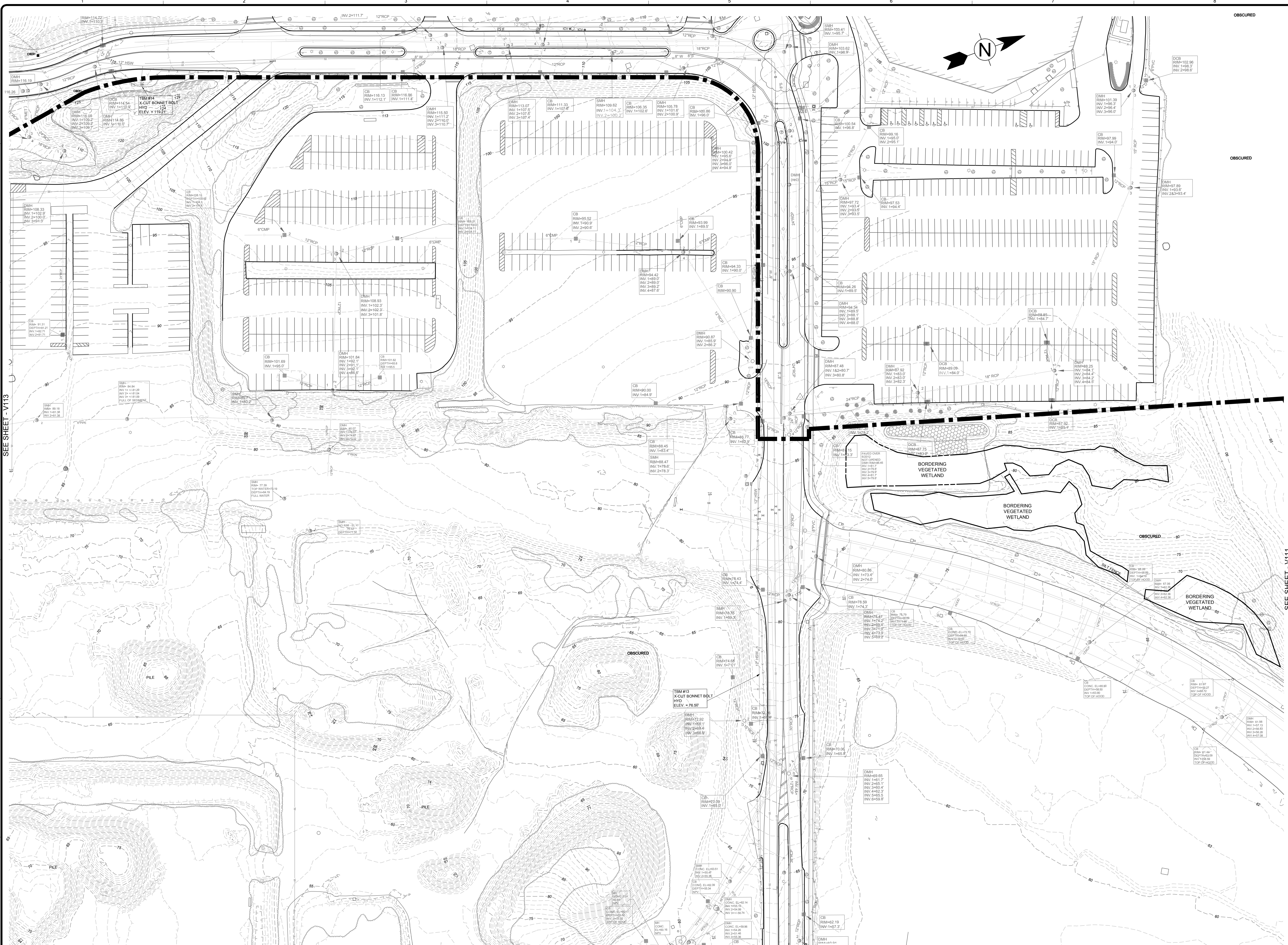
V-111

Copyright: Tetra Tech
Bar Measures 1 inch

3/18/2013 11:08:25 AM - P:\3659\127-3659-12003\CADD\SHEETFILES\11 EXISTING CONDITIONS PLANDWG - BECKWITH, JOHN



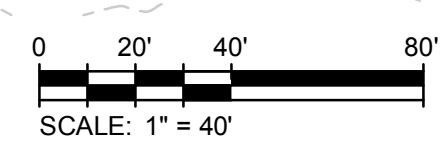
3/18/2013 11:08:47 AM - P:\3659127-3659-12003\CAD\SHEET FILES\111 EXISTING CONDITIONS PLANS.DWG - BECKWITH, JOHN



SEE SHEET - V113

SEE SHEET - V111

SEE SHEET - V116



TETRA TECH
www.tetra.tech
One Grant Street
Framingham, MA 01701
PHONE: (508) 562-2000 FAX: (508) 562-2001

Project No.: 127-3659-12003
Designed By: A.F.T./M.K.M.
Drawn By: J.V.B./S.C.V.
Checked By: N.H.C./R.F.D.

MARK	DATE	DESCRIPTION	BY
1	10/9/12	Preliminary Site Development Plans	N.H.C.
2	11/30/12	Revised Site Development Plans	N.H.C.
3	03/22/13	Revised Site Development Plans	N.H.C.

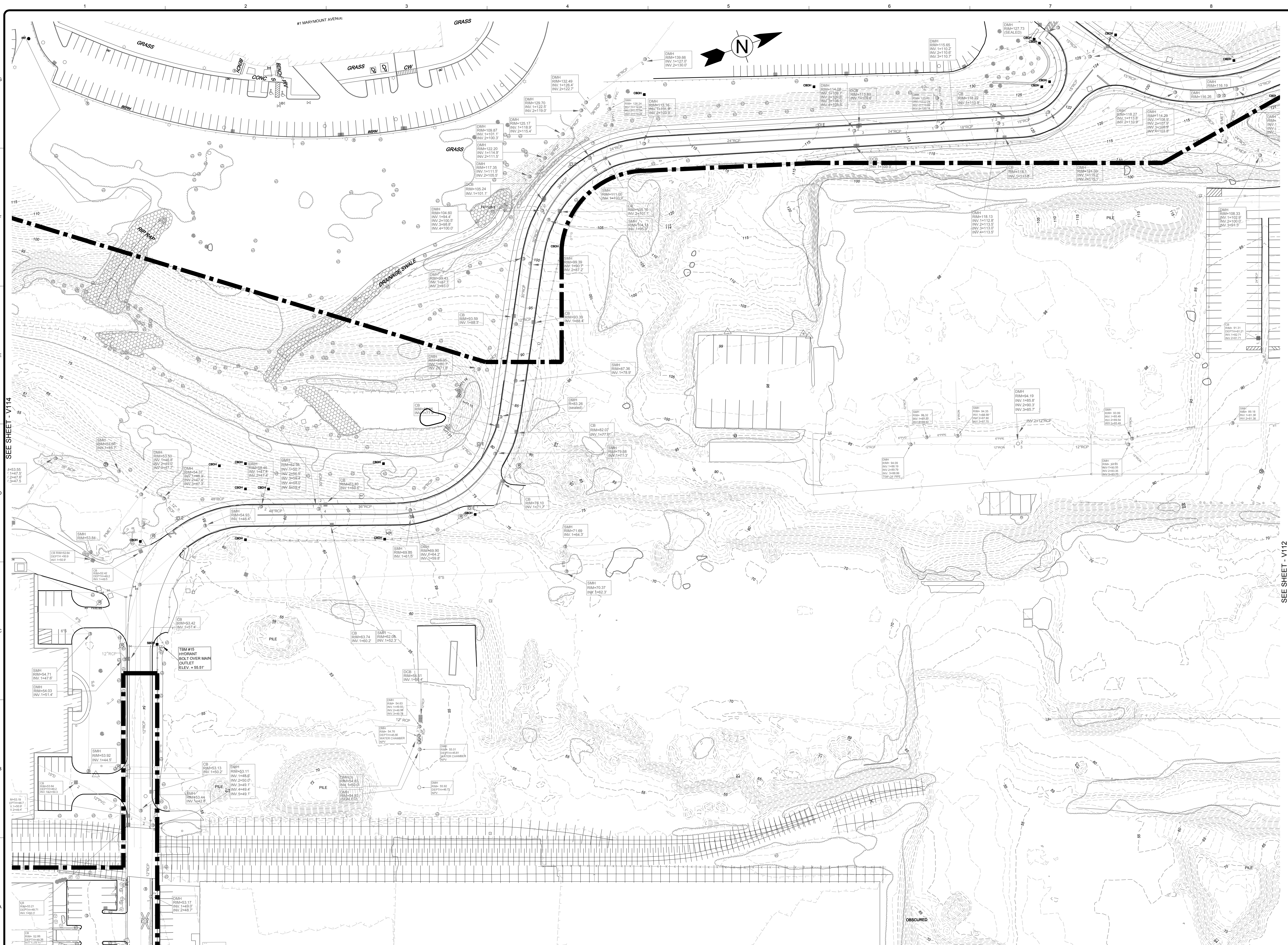
Client: Westwood Marketplace Holdings LLC
Proj. Loc.: University Ave., Westwood, MA
University Station
Redevelopment

Existing Conditions Plan

V-112

Copyright: Tetra Tech
Bar Measures 1 inch

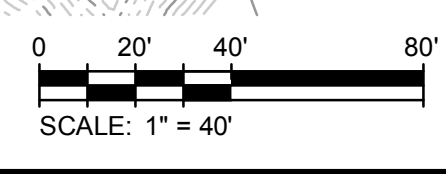
3/18/2013 11:07:09 AM - P:\3659127-3659-2003\CAD\SHEETFILES\11 EXISTING CONDITIONS PLAN.DWG - BECKWITH, JOHN



SEE SHEET - V114

SEE SHEET - V112

SEE SHEET - V117



MARK	DATE	DESCRIPTION	BY
1	10/9/12	Preliminary Site Development Plans	N.H.C.
2	11/30/12	Revised Site Development Plans	N.H.C.
3	03/22/13	Revised Site Development Plans	N.H.C.

Client: Westwood Marketplace Holdings LLC
 Proj. Loc.: University Ave., Westwood, MA
 Project Name: University Station - University Avenue Redevelopment

Project No.: 127-3659-12003
 Designed By: A.F.T./M.K.M.
 Drawn By: J.V.B./S.C.V.
 Checked By: N.H.C./R.D.F.

V-113

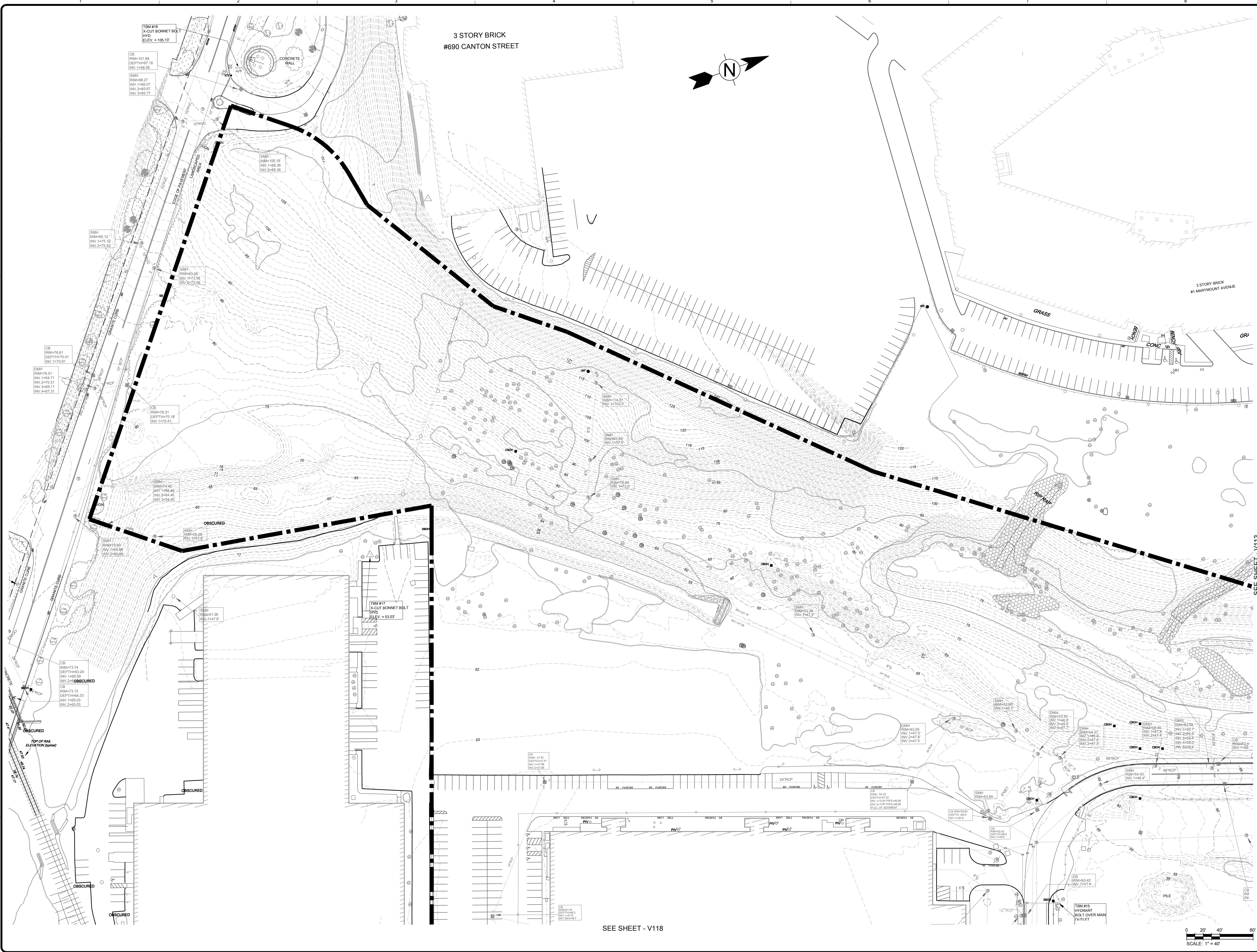
Bar Measures 1 inch

TETRA TECH
 www.tetra.tech.com
 One Grant Street
 Framingham, MA 01701
 PHONE: (508) 969-2000 FAX: (508) 969-2001

Existing Conditions Plan

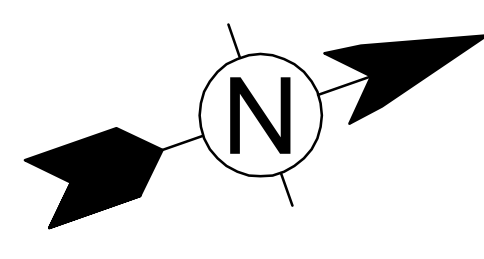
Copyright: Tetra Tech

3/18/2013 11:07:31 AM - P:\3659127-3659-2003\CAD\SHEETFILES\11 EXISTING CONDITIONS PLAN.DWG - BECKWITH, JOHN



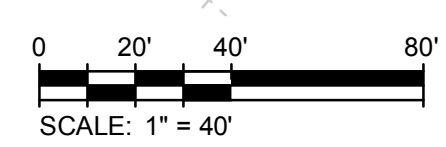
3 STORY BRICK
#690 CANTON STREET

3 STORY BRICK
#1 MARYMOUNT AVENUE



SEE SHEET - V113

SEE SHEET - V118



MARK	DATE	DESCRIPTION	BY
1	10/01/12	Preliminary Site Development Plans	N.H.C.
2	11/00/12	Revised Site Development Plans	N.H.C.
3	03/22/13	Revised Site Development Plans	N.H.C.

Client: Westwood Management Holdings LLC
 Proj. Loc.: University Ave., Westwood, MA
 Project No.: 127-3659-12003
 Designed By: A.F.T./M.K.M.
 Drawn By: J.V.B./S.C.V.
 Checked By: N.H.C./R.F.D.

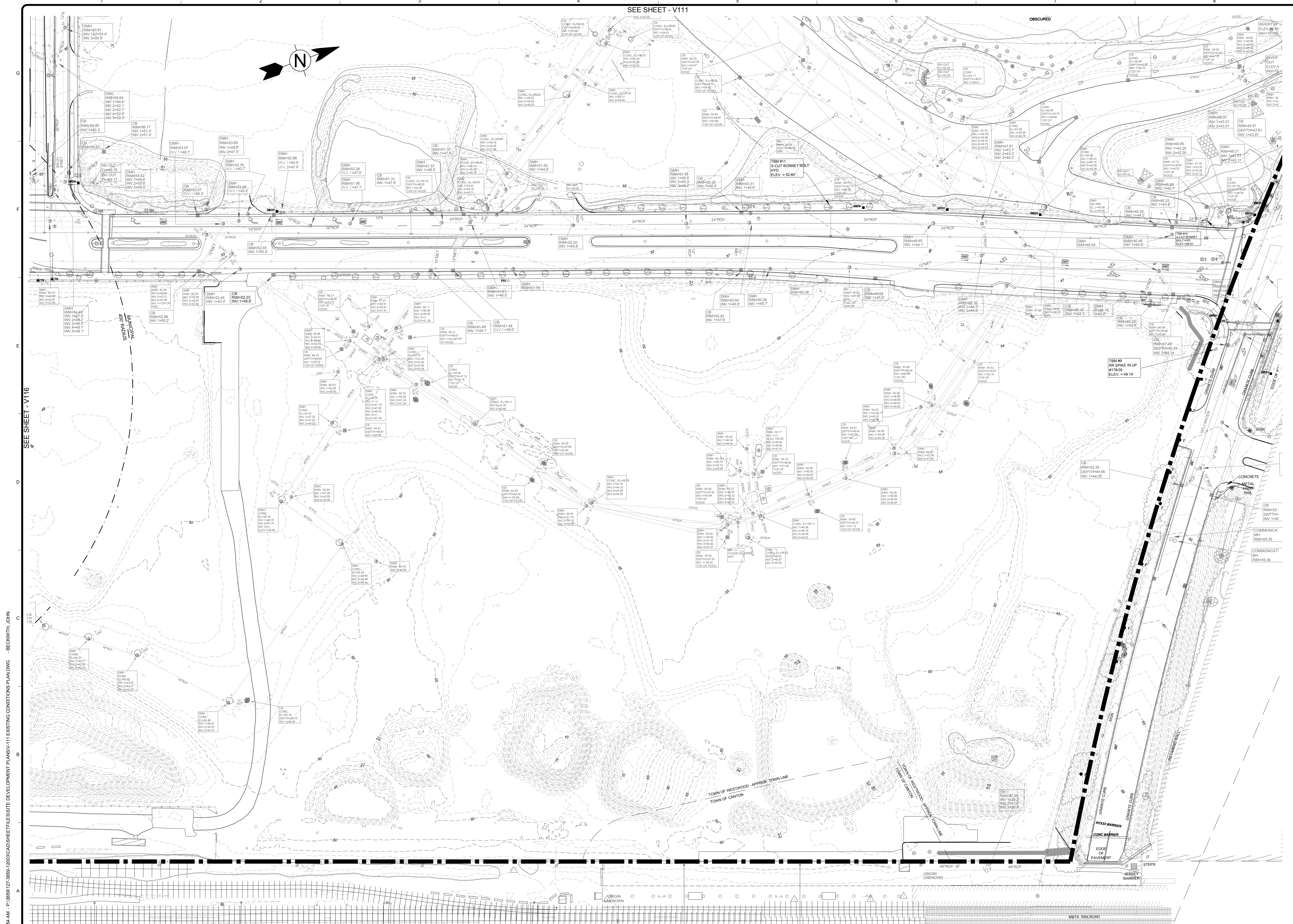
Project No.: 127-3659-12003
 Designed By: A.F.T./M.K.M.
 Drawn By: J.V.B./S.C.V.
 Checked By: N.H.C./R.F.D.

V-114

Bar Measures 1 inch

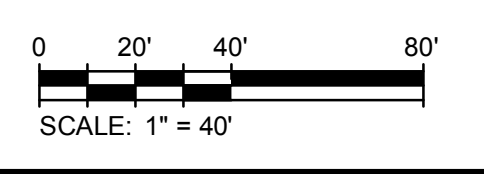
TETRA TECH
 www.tetra.tech.com
 One Grant Street
 Framingham, MA 01701
 PHONE: 508.552.2000 FAX: 508.552.2001

Existing Conditions Plan



3/18/2013 11:07:54 AM - P:\3659127-3659-12003\CAD SHEET FILES\SITE DEVELOPMENT PLANS\111 EXISTING CONDITIONS PLAN.DWG - BECKWITH, JOHN

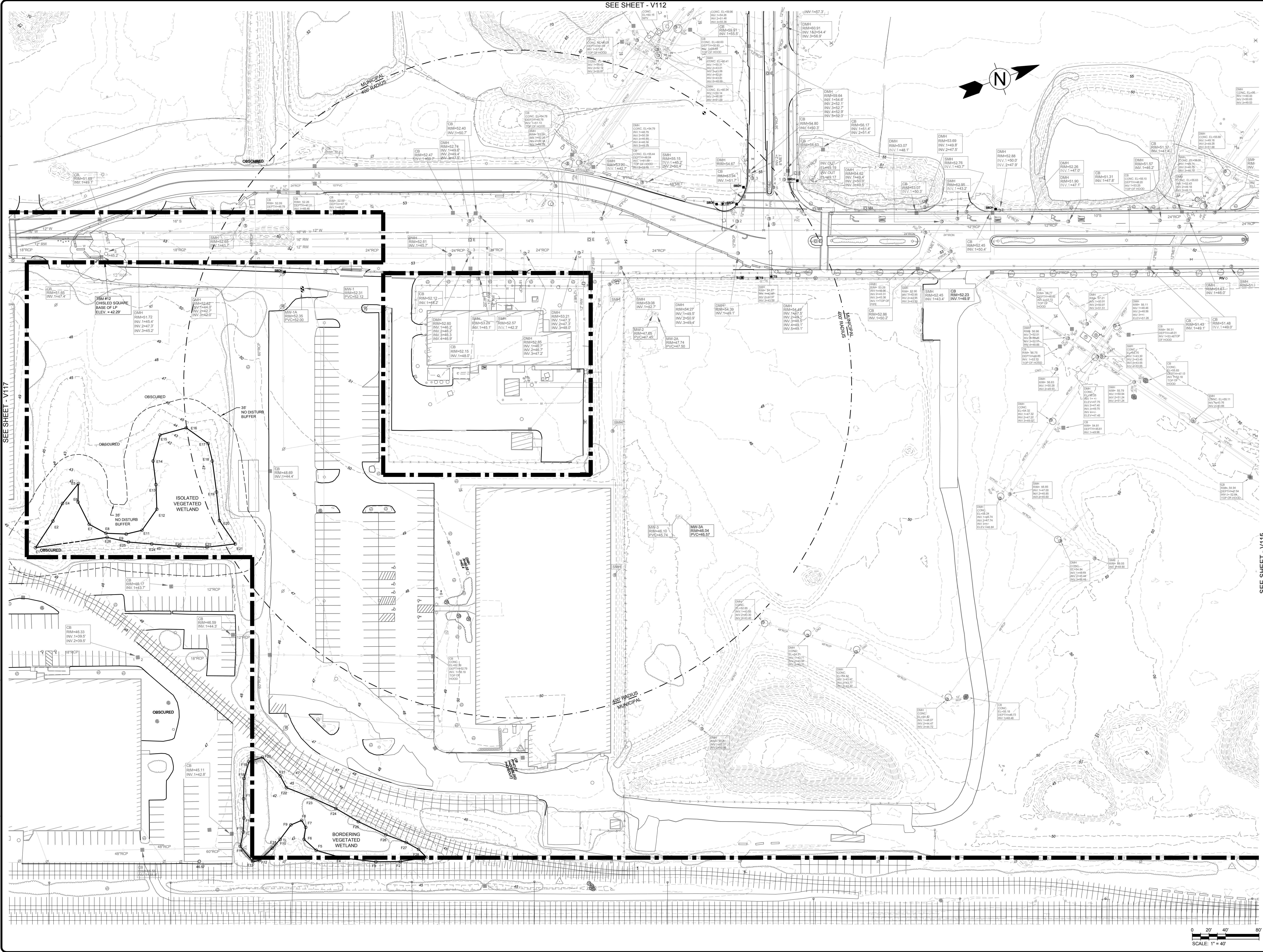
SEE SHEET - V116



TETRA TECH
www.tetra.tech
One Grant Street
Framingham, MA 01701
PHONE: 508.562.2000 FAX: 508.562.5001

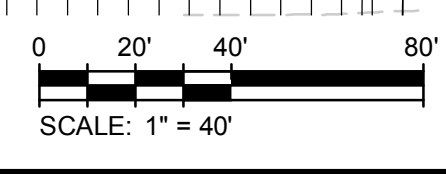
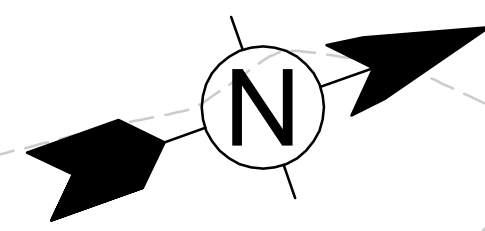
MARK	DATE	DESCRIPTION	BY
1	1/09/12	Preliminary Site Development Plans	N.H.C.
2	11/03/12	Revised Site Development Plans	N.H.C.
3	03/22/13	Revised Site Development Plans	N.H.C.

Client: Westwood Marketplace Holdings LLC
 Proj. Loc.: University Ave., Westwood, MA
 Project No.: 127-3659-12003
 Designed By: A.F.T./M.K.M.
 Drawn By: J.V.B./S.C.V.
 Checked By: N.H.C./R.F.D.
V-115
 Copyright: Tetra Tech
 Bar Measures 1 inch



SEE SHEET - V112

SEE SHEET - V117



SEE SHEET - V115

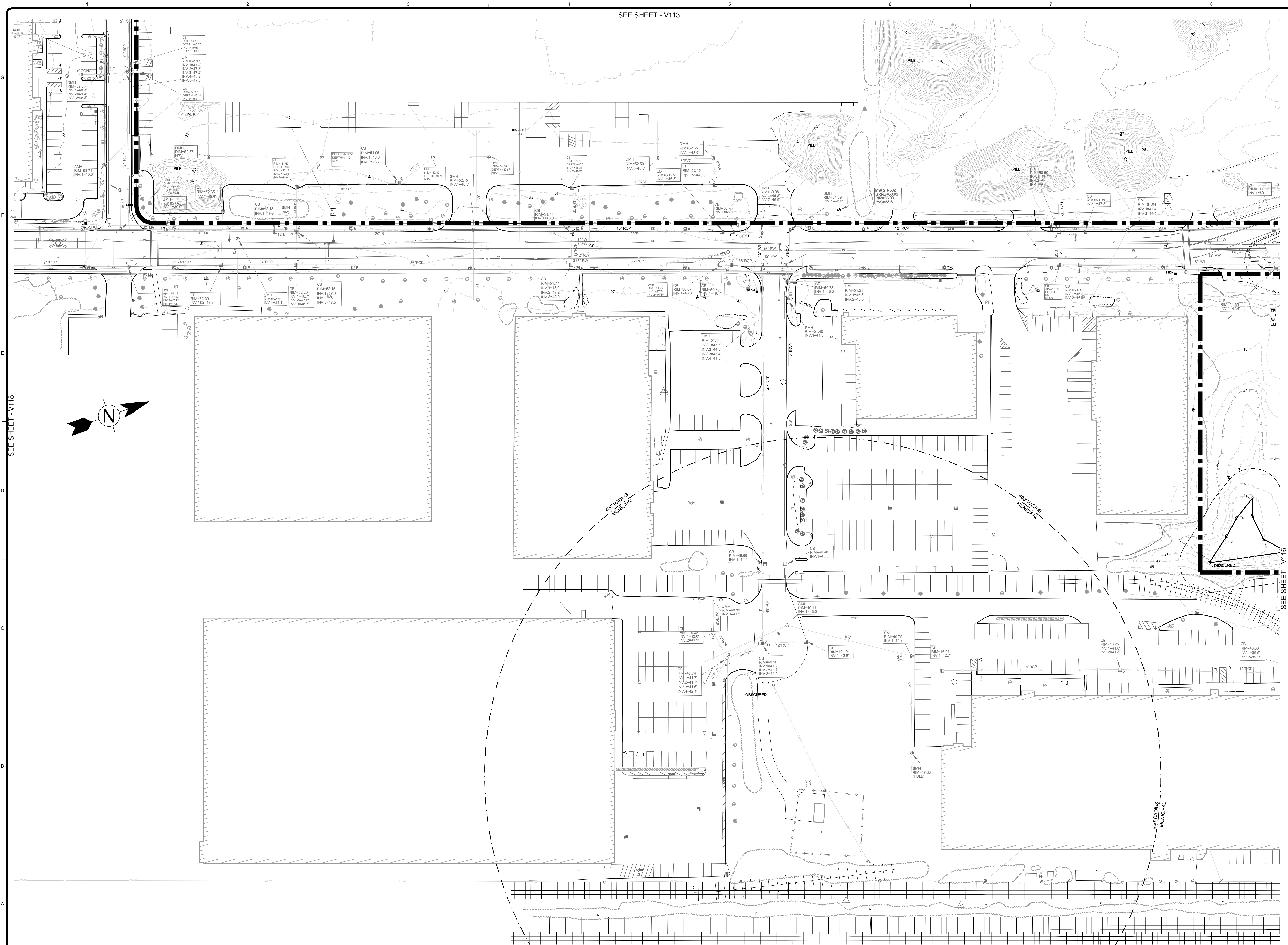
MARK	DATE	DESCRIPTION	BY
1	10/01/12	Preliminary Site Development Plans	N.H.C.
2	11/03/12	Revised Site Development Plans	N.H.C.
3	03/22/13	Revised Site Development Plans	N.H.C.

Client: Westwood Marketplace Holdings LLC
 Proj. Loc.: University Ave., Westwood, MA
 Project No.: 127-3659-12003
 Designed By: A.F.T./M.K.M.
 Drawn By: J.V.B./S.C.V.
 Checked By: N.H.C./R.F.D.

Existing Conditions Plan
V-116
 Copyright: Tetra Tech

TETRA TECH
 www.tetra.tech
 One Grant Street
 Framingham, MA 01701
 PHONE: (508) 562-2000 FAX: (508) 562-2001

3/18/2013 11:08:16 AM - P:\3659\127-3659-12003\CAD\SHEETFILES\11 EXISTING CONDITIONS PLAN.DWG - BECKWITH, JOHN



SEE SHEET - V113

SEE SHEET - V118

SEE SHEET - V116

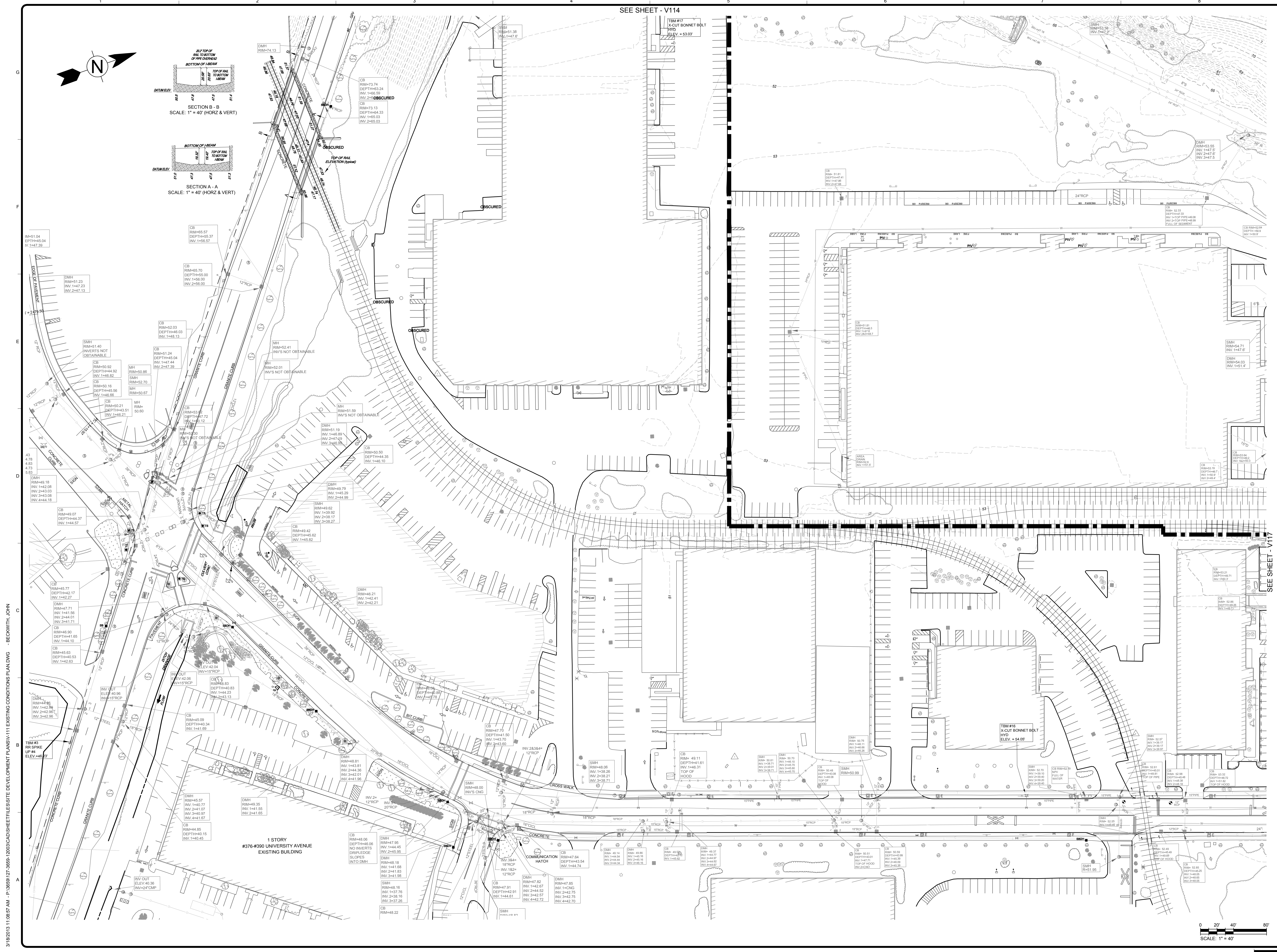
MARK	DATE	DESCRIPTION	BY
1	10/8/12	Preliminary Site Development Plans	N.H.C.
2	11/30/12	Revised Site Development Plans	N.H.C.
3	03/22/13	Revised Site Development Plans	N.H.C.

Client: Westwood Marketplace Holdings LLC
 Proj. Loc.: University Ave., Westwood, MA
 University Station - University Avenue
 Redevelopment

Project No.: 127-3659-12003
 Designed By: A.F.T./M.K.M.
 Drawn By: J.V.B./S.C.V.
 Checked By: N.H.C./R.F.D.

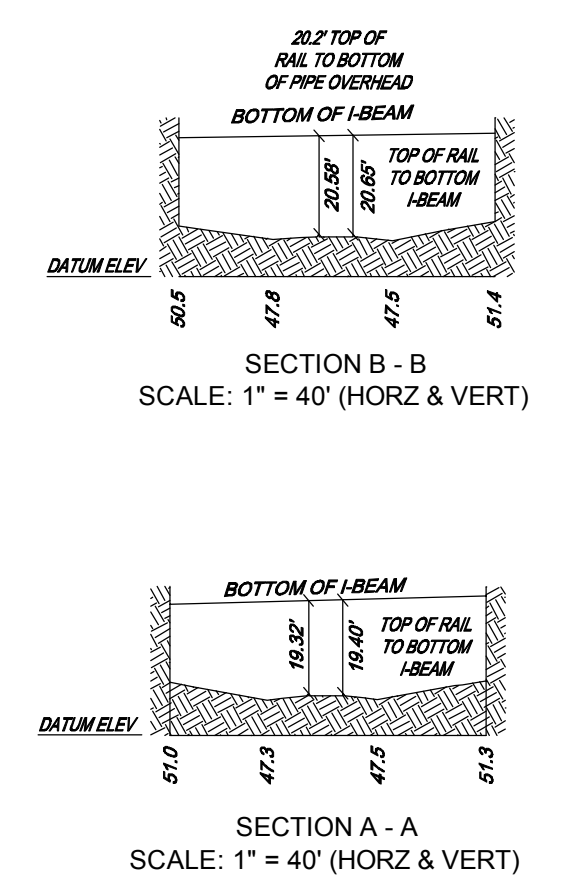
V-117

TETRA TECH
 www.tetra.tech.com
 One Grant Street
 Framingham, MA 01701
 PHONE: 508.552.2000 FAX: 508.552.2001



SEE SHEET - V114

SEE SHEET - V117



3/18/2013 11:08:57 AM - P:\36591\27-58591-2003\CAD\SHEETFILES\SITE DEVELOPMENT\PLANS\111 EXISTING CONDITIONS PLAN.DWG - BECKWITH, JOHN

Client: Westwood Marketplace Holdings LLC
Proj. Loc.: University Av., Westwood, MA

University Station - University Avenue
Redevelopment

Existing Conditions Plan

MARK	DATE	DESCRIPTION	BY
1	10/8/12	Preliminary Site Development Plans	N.H.C.
2	11/30/12	Revised Site Development Plans	N.H.C.
3	03/22/13	Revised Site Development Plans	N.H.C.

Project No.: 127-3659-12003
Designed By: A.F.T./M.K.M.
Drawn By: J.V.B./S.C.V.
Checked By: N.H.C./R.F.D.

Copyright: Tetra Tech

V-118

Bar Measures 1 inch

TETRA TECH

www.tetrattech.com
One Grant Street
Framingham, MA 01701
PHONE: (508) 562-2000 FAX: (508) 562-2001