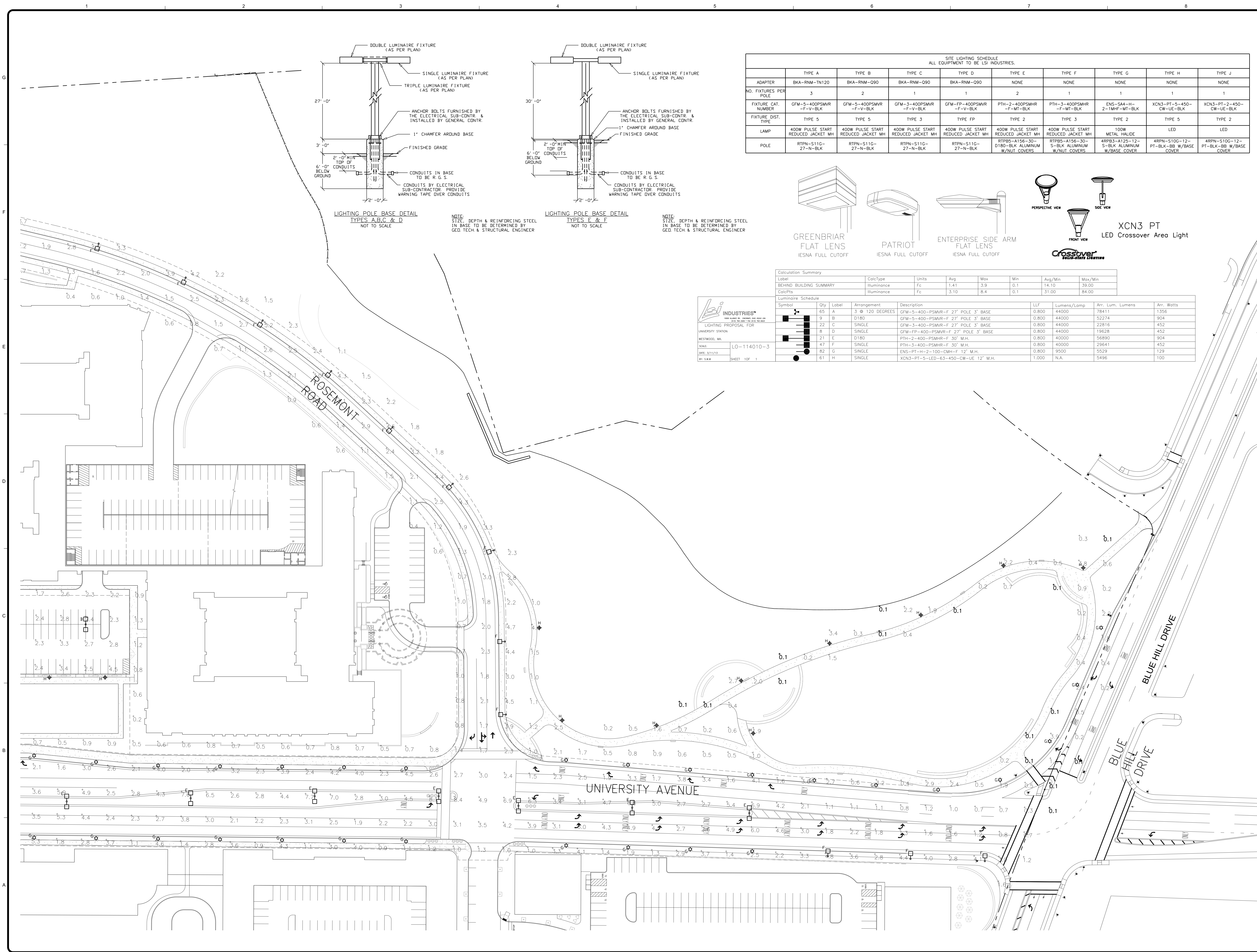
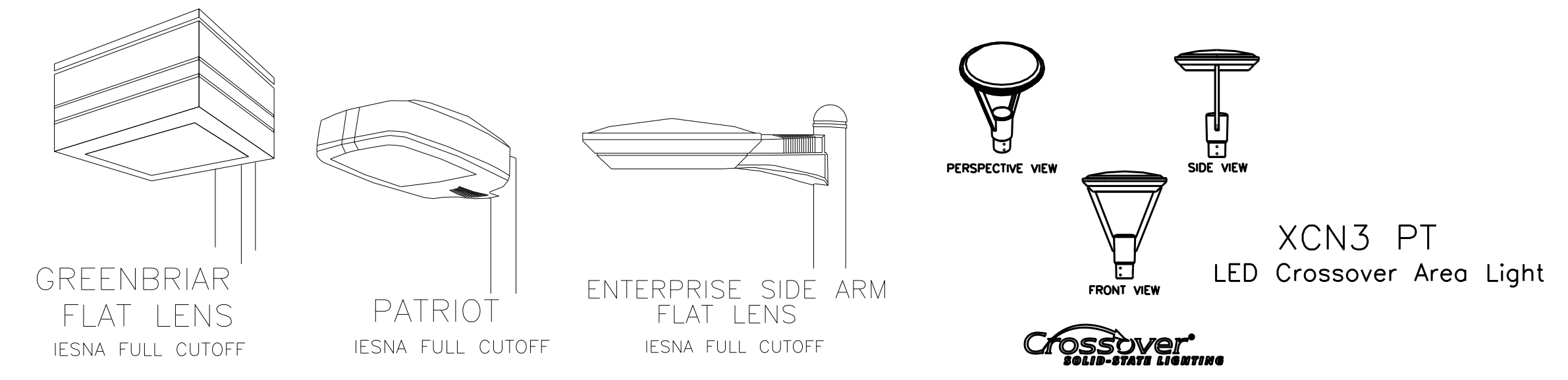


3/18/2013 8:16:22 AM - K:\UNIVERSITY STATION\UNIVERSITY STATION SL-1.dwg - STATION 218



SITE LIGHTING SCHEDULE
ALL EQUIPMENT TO BE LSI INDUSTRIES.

	TYPE A	TYPE B	TYPE C	TYPE D	TYPE E	TYPE F	TYPE G	TYPE H	TYPE J
ADAPTER	BKA-RNM-TN120	BKA-RNM-Q90	BKA-RNM-Q90	BKA-RNM-Q90	NONE	NONE	NONE	NONE	NONE
NO. FIXTURES PER POLE	3	2	1	1	2	1	1	1	1
FIXTURE CAT. NUMBER	GFM-5-400PSMVR-F-V-BLK	GFM-5-400PSMVR-F-V-BLK	GFM-3-400PSMVR-F-V-BLK	GFM-FP-400PSMVR-F-V-BLK	PTH-2-400PSMHR-F-MT-BLK	PTH-3-400PSMHR-F-MT-BLK	ENS-SM4-H-2-1MHF-MT-BLK	XCN3-PT-5-450-CW-UE-BLK	XCN3-PT-2-450-CW-UE-BLK
FIXTURE DIST. TYPE	TYPE 5	TYPE 5	TYPE 3	TYPE FP	TYPE 2	TYPE 3	TYPE 2	TYPE 5	TYPE 2
LAMP	400W PULSE START, REDUCED JACKET MH	400W PULSE START, REDUCED JACKET MH	400W PULSE START, REDUCED JACKET MH	400W PULSE START, REDUCED JACKET MH	400W PULSE START, REDUCED JACKET MH	400W PULSE START, REDUCED JACKET MH	100W METAL HALIDE	LED	LED
POLE	RTPN-S11G-27-N-BLK	RTPN-S11G-27-N-BLK	RTPN-S11G-27-N-BLK	RTPN-S11G-27-N-BLK	RTPBS-A156-30-D180-BLK ALUMINUM W/NUT COVERS	RTPBS-A156-30-S-BLK ALUMINUM W/NUT COVERS	4RFB3-A125-12-S-BLK ALUMINUM W/BASE COVER	4RPN-S10G-12-PT-BLK-BB W/BASE COVER	4RPN-S10G-12-PT-BLK-BB W/BASE COVER



Calculation Summary

Label	CalcType	Units	Avg	Max	Min	Avg/Min	Max/Min
BEHIND BUILDING SUMMARY	Illuminance	Fc	1.41	3.9	0.1	14.10	39.00
CalcPlts	Illuminance	Fc	3.10	8.4	0.1	31.00	84.00

Luminaire Schedule

Symbol	Qty	Label	Arrangement	Description	LLF	Lumens/Lamp	Arr. Lum. Lumens	Arr. Watts
■	65	A	3 @ 120 DEGREES	GFM-5-400-PSMVR-F 27" POLE 3' BASE	0.800	44000	78411	1356
■	9	B	D180	GFM-5-400-PSMVR-F 27" POLE 3' BASE	0.800	44000	52274	904
■	22	C	SINGLE	GFM-3-400-PSMVR-F 27" POLE 3' BASE	0.800	44000	22816	452
■	8	D	SINGLE	GFM-FP-400-PSMVR-F 30' M.H.	0.800	44000	19628	452
■	21	E	D180	PTH-2-400-PSMHR-F 30' M.H.	0.800	40000	56890	904
■	47	F	SINGLE	PTH-3-400-PSMHR-F 30' M.H.	0.800	40000	29641	452
■	82	G	SINGLE	ENS-SM4-H-2-100-CMH-F 12' M.H.	0.800	9500	5529	129
■	61	H	SINGLE	XCN3-PT-5-LED-63-450-CW-UE 12' M.H.	1.000	N.A.	5496	100

LSI INDUSTRIES
LIGHTING PROPOSAL FOR
UNIVERSITY STATION
WESTWOOD, MA
DATE: 2/12/13
BY: S.W.

LO-114010-3
SHEET 10F 1

TETRA TECH
www.tetra-tech.com
One Grant Street
Framingham, MA 01701
PHONE: (508) 962-2000 FAX: (508) 962-2001

EA
ENGINEERING ADVANTAGE, INC.
2 PARK ST.
BOSTON, MASSACHUSETTS 02122
PHONE: (617) 288-3969
FAX: (617) 825-8922

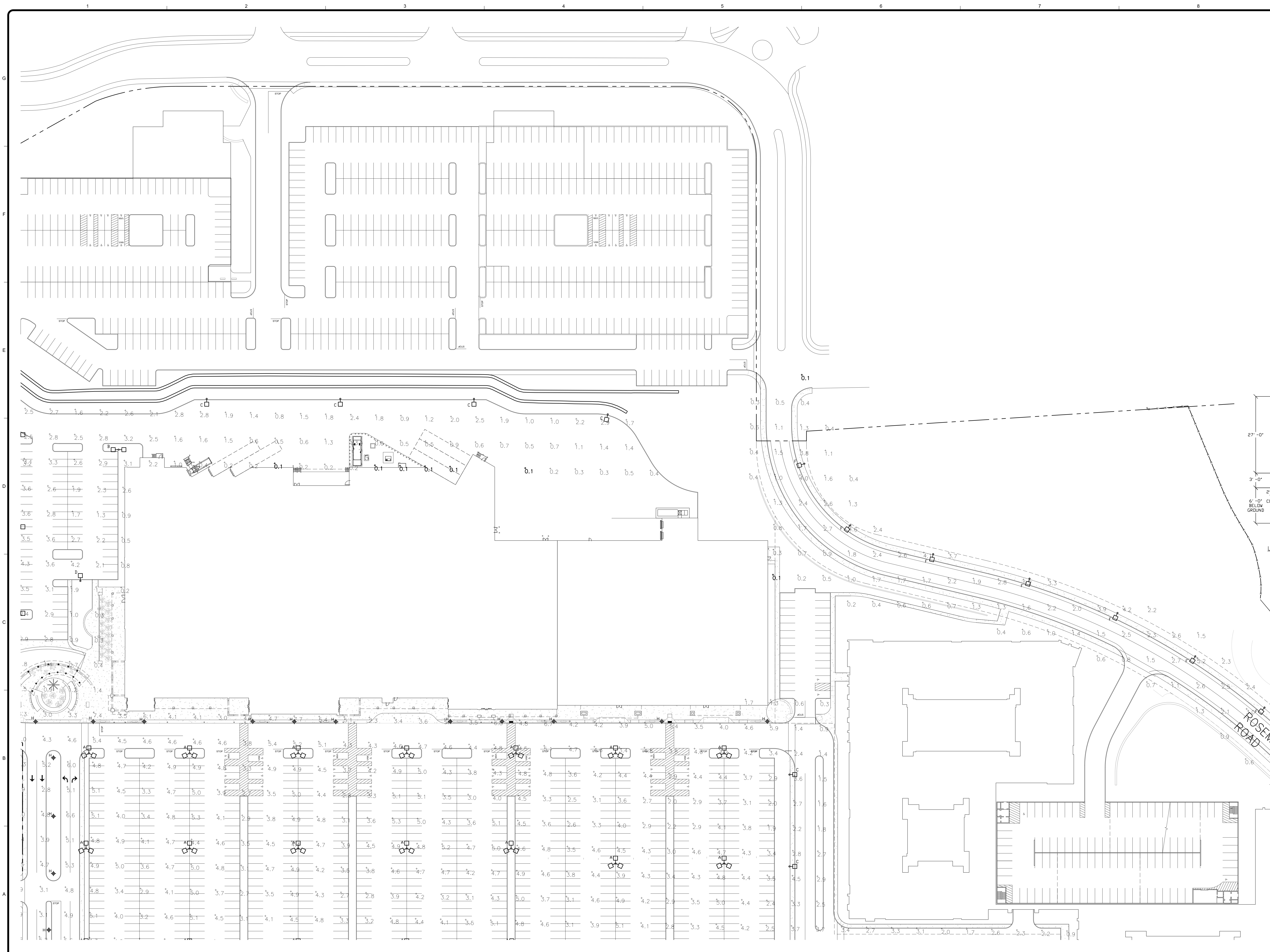
MARK	DATE	DESCRIPTION
1	11/09/12	SITE LIGHTING PACKAGE
2	03/22/13	REVISED SITE DEVELOPMENT PLANS

Client: Westwood Marketplace Holdings LLC
Proj. Loc.: University Ave., Westwood, MA
University Station - University Avenue
Redevelopment

Project No.: 127-3659-12003
Designed By: LAF
Drawn By: CJC
Checked By: LAF

SL-1
Copyright: Tetra Tech
Bar Measures 1 inch

3/18/2013 8:16:04 AM - KUNIVERSITY STATION\UNIVERSITY STATION SL-18.DWG - STATION 218



TETRA TECH
www.tetra-tech.com
One Grant Street
Framingham, MA 01701
PHONE: (508) 962-2000 FAX: (508) 962-2001

EA
ENGINEERING ADVANTAGE, INC.
2 PARK ST.
BOSTON, MASSACHUSETTS 02122
PHONE: (617) 288-3969
FAX: (617) 825-8922

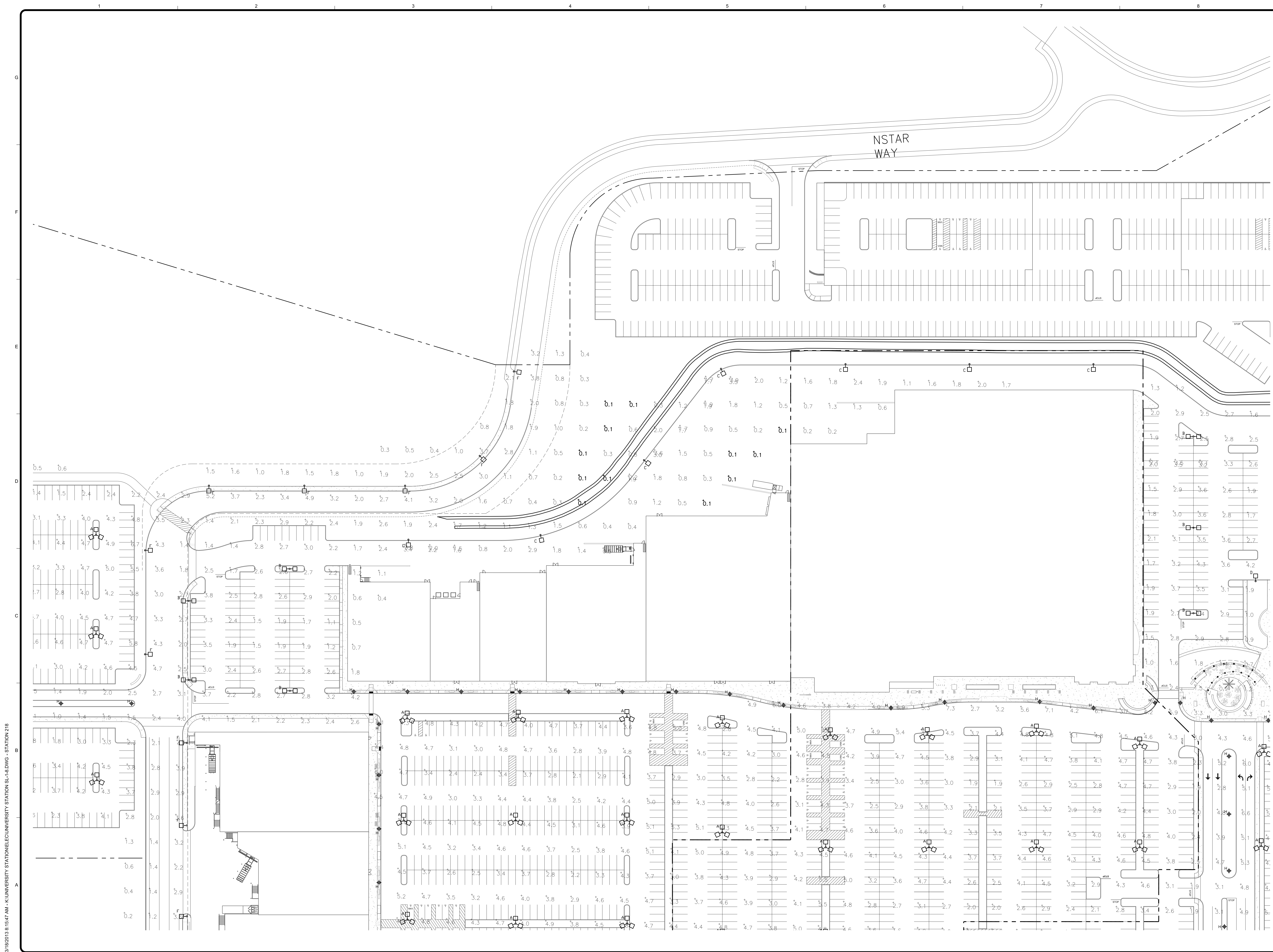
MARK	DATE	DESCRIPTION
1	11/01/12	SITE LIGHTING PACKAGE
2	03/22/13	REVISED SITE DEVELOPMENT PLANS

BY	DESCRIPTION
CJC	

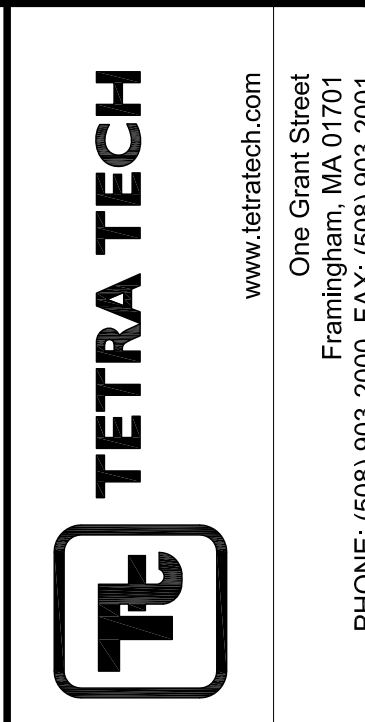
Client: Westwood Marketplace Holdings LLC
Proj. Loc.: University Ave, Westwood, MA
Project No.: 127-3659-12003
Designed By: LAF
Drawn By: CJC
Checked By: LAF

SL-2
Copyright: Tetra Tech
Bar Measures 1 inch

Site Lighting Plan



3/18/2013 8:15:47 AM - K:\UNIVERSITY STATION\UNIVERSITY STATION SL-3.dwg - STATION 218



EA
 ENGINEERING ADVANTAGE, INC.
 2 PARK ST.
 BOSTON, MASSACHUSETTS 02122
 PHONE: (617) 288-3969
 FAX: (617) 825-8922

MARK	DATE	DESCRIPTION
1	11/01/12	SITE LIGHTING PACKAGE
2	03/22/13	REVISED SITE DEVELOPMENT PLANS

BY	DESCRIPTION
CJC	

Client: Westwood Marquette Holdings LLC
 Proj. Loc.: University Ave, Westwood, MA

University Station - University Avenue
 Redevelopment

Site Lighting Plan

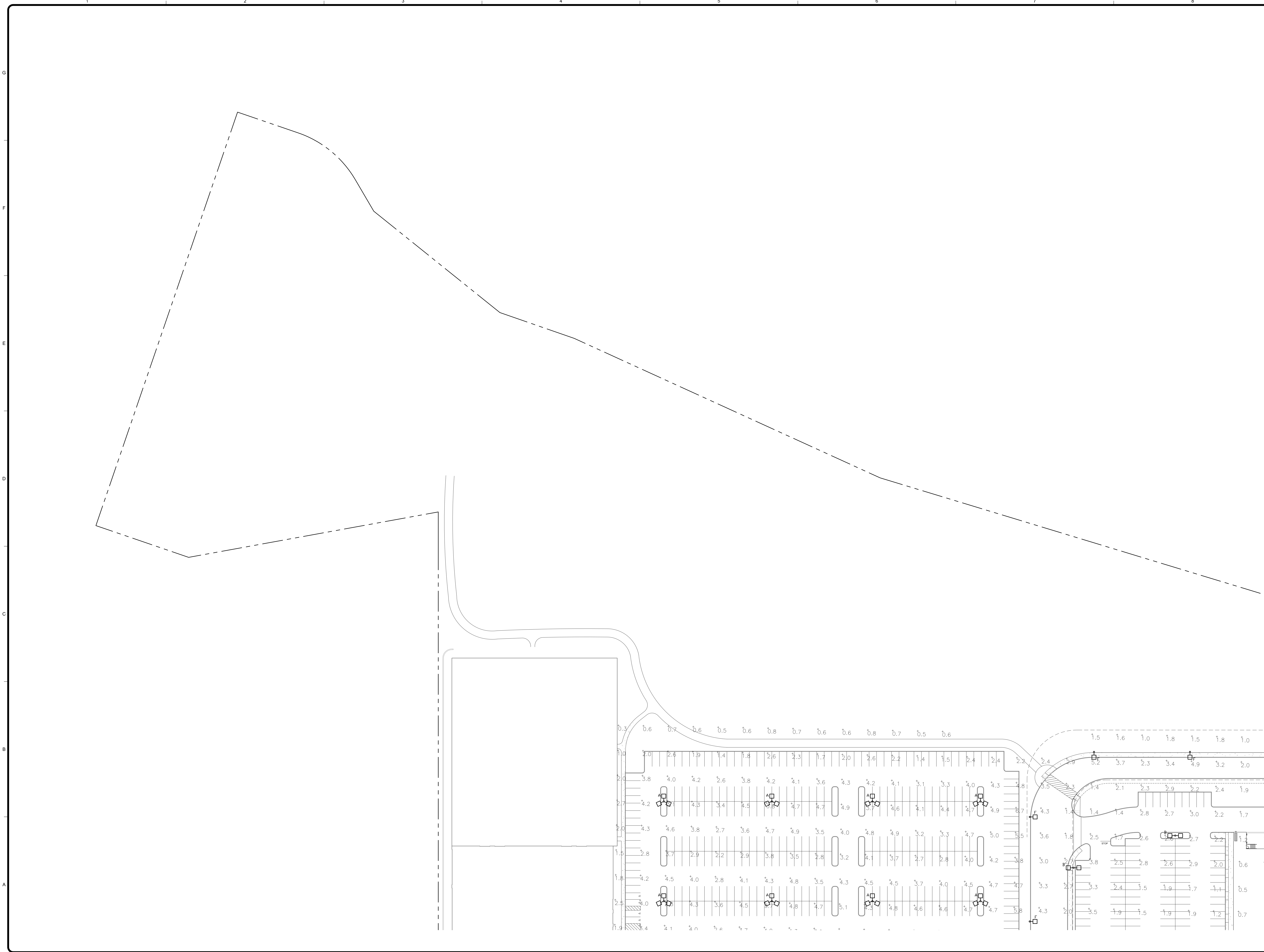
Project No.: 127-3659-12003
 Designed By: LAF
 Drawn By: CJC
 Checked By: LAF

SL-3

Copyright: Tetra Tech

Bar Measures 1 inch

3/18/2013 8:15:28 AM - K:\UNIVERSITY STATION\UNIVERSITY STATION SL-4.DWG - STATION 218



TETRA TECH
www.tetrattech.com
One Grant Street
Framingham, MA 01701
PHONE: (508) 962-2000 FAX: (508) 962-2001

EA
ENGINEERING ADVANTAGE, INC.
2 PARK ST.
BOSTON, MASSACHUSETTS 02122
PHONE: (617) 288-3969
FAX: (617) 825-8922

MARK	DATE	DESCRIPTION
1	11/01/12	SITE LIGHTING PACKAGE
2	03/22/13	REVISED SITE DEVELOPMENT PLANS

BY	DESCRIPTION
CJC	

Client: Westwood Marketplace Holdings LLC
Proj. Loc.: University Ave, Westwood, MA
University Station - University Avenue Redevelopment

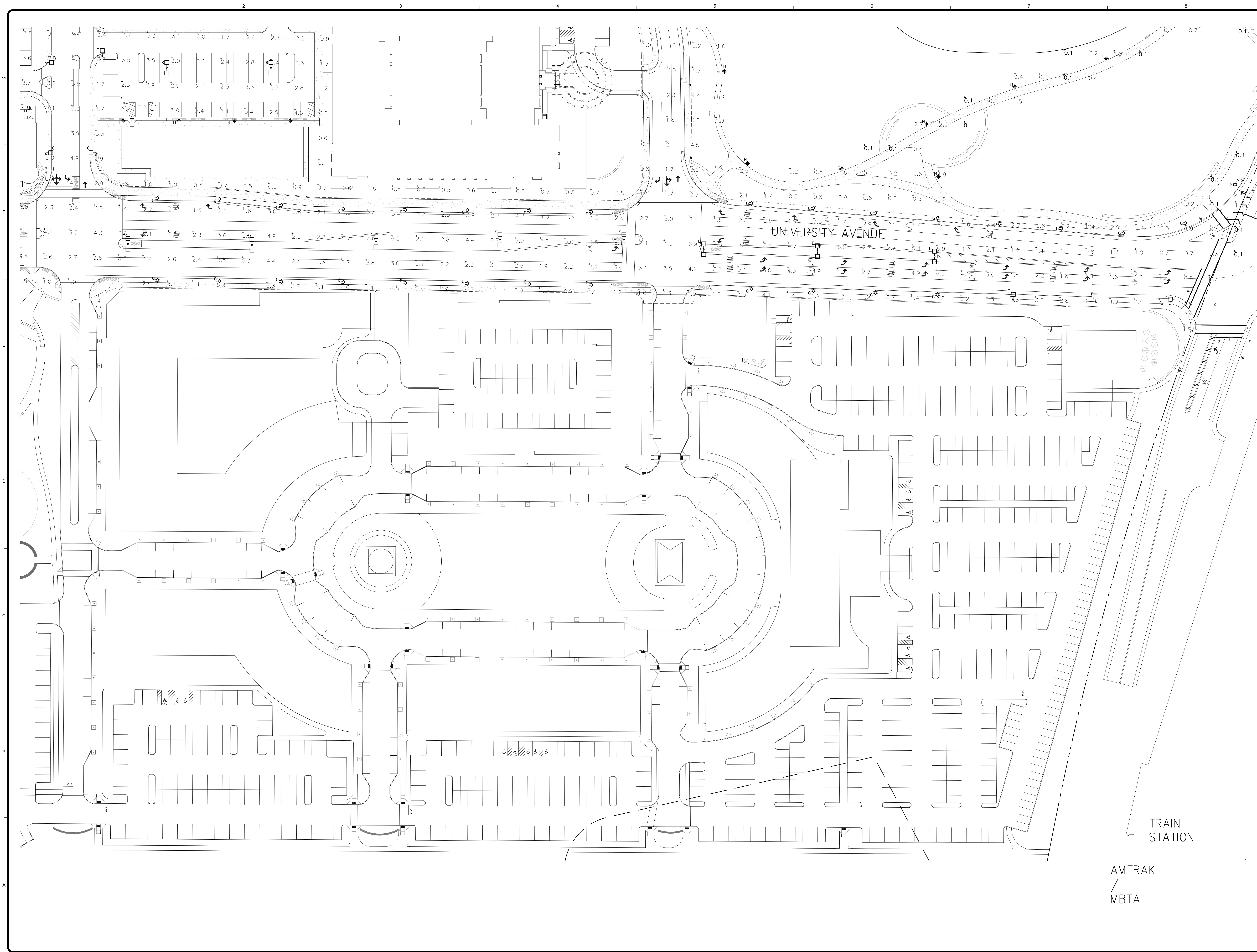
Site Lighting Plan

Project No.: 127-3659-12003
Designed By: LAF
Drawn By: CJC
Checked By: LAF

SL-4

Copyright: Tetra Tech
Bar Measures 1 inch

3/8/2013 8:44:41 AM - K:\UNIVERSITY STATION\UNIVERSITY STATION SL-5.DWG - STATION 218



TETRA TECH
www.tetra-tech.com
One Grant Street
Framingham, MA 01701
PHONE: (508) 952-2000 FAX: (508) 952-2001

EA
ENGINEERING ADVANTAGE, INC.
2 PARK ST.
BOSTON, MASSACHUSETTS 02122
PHONE: (617) 288-3969
FAX: (617) 825-8922

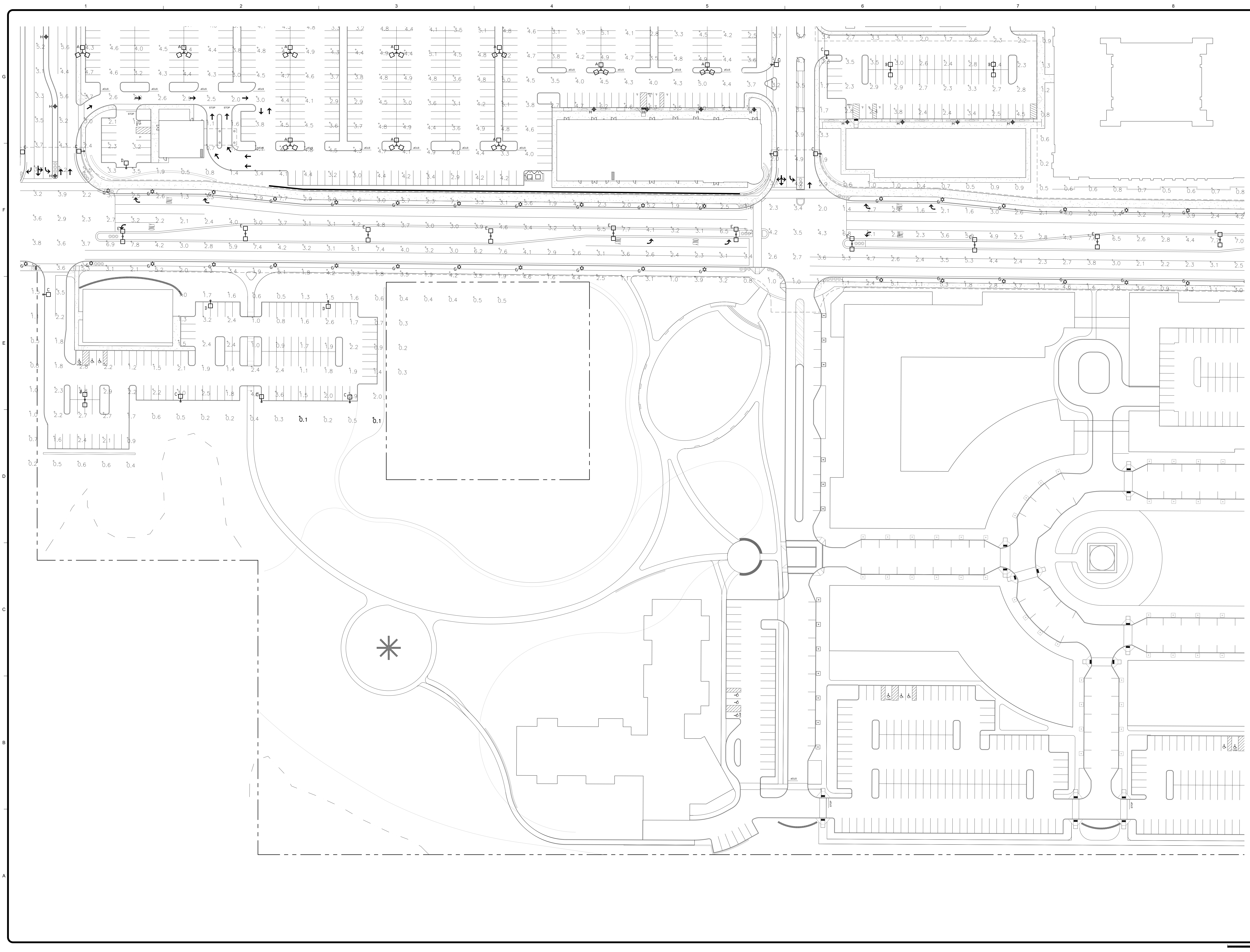
MARK	DATE	DESCRIPTION
1	11/01/12	SITE LIGHTING PACKAGE
2	03/22/13	REVISED SITE DEVELOPMENT PLANS

Client: Westwood Marketplace Holdings LLC
Proj. Loc.: University Ave, Westwood, MA
University Station - University Avenue
Redevelopment

Project No.: 127-3659-12003
Designed By: LAF
Drawn By: CJC
Checked By: LAF

SL-5
Copyright: Tetra Tech

Bar Measures 1 inch



TETRA TECH
www.tetrattech.com
One Grant Street
Framingham, MA 01701
PHONE: (508) 952-2000 FAX: (508) 952-0001

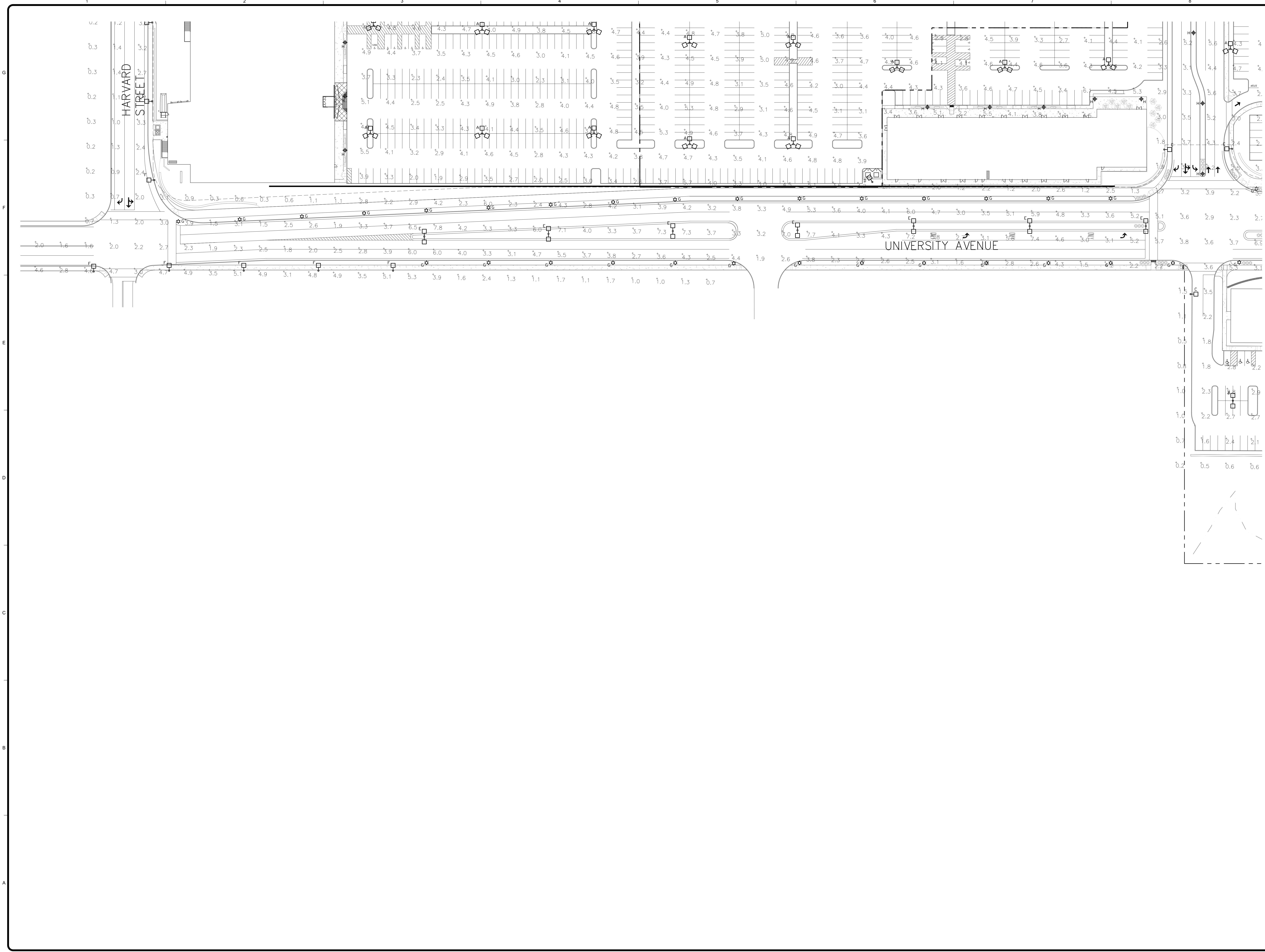
EA
ENGINEERING ADVANTAGE, INC.
2 PARK ST.
BOSTON, MASSACHUSETTS 02122
PHONE: (617) 288-3969
FAX: (617) 825-8922

MARK	DATE	DESCRIPTION
1	11/03/12	SITE LIGHTING PACKAGE
2	03/22/13	REVISED SITE DEVELOPMENT PLANS

Client: Westwood Marketplace Holdings LLC
Proj. Loc.: University Ave., Westwood, MA
University Station - University Avenue
Redevelopment

Project No.: 127-3659-12003
Designed By: LAF
Drawn By: CJC
Checked By: LAF

SL-6
Copyright: Tetra Tech



TETRA TECH
www.tetrattech.com
One Grant Street
Framingham, MA 01701
PHONE: (508) 952-2000 FAX: (508) 952-0001

EA
ENGINEERING ADVANTAGE, INC.
2 PARK ST.
BOSTON, MASSACHUSETTS 02122
PHONE: (617) 288-3969
FAX: (617) 825-8922

MARK	DATE	DESCRIPTION
1	11/01/12	SITE LIGHTING PACKAGE
2	03/22/13	REVISED SITE DEVELOPMENT PLANS

Client: Westwood Marketplace Holdings LLC
Proj. Loc.: University Ave., Westwood, MA

Project No.: 127-3659-12003
Designed By: LAF
Drawn By: CJC
Checked By: LAF

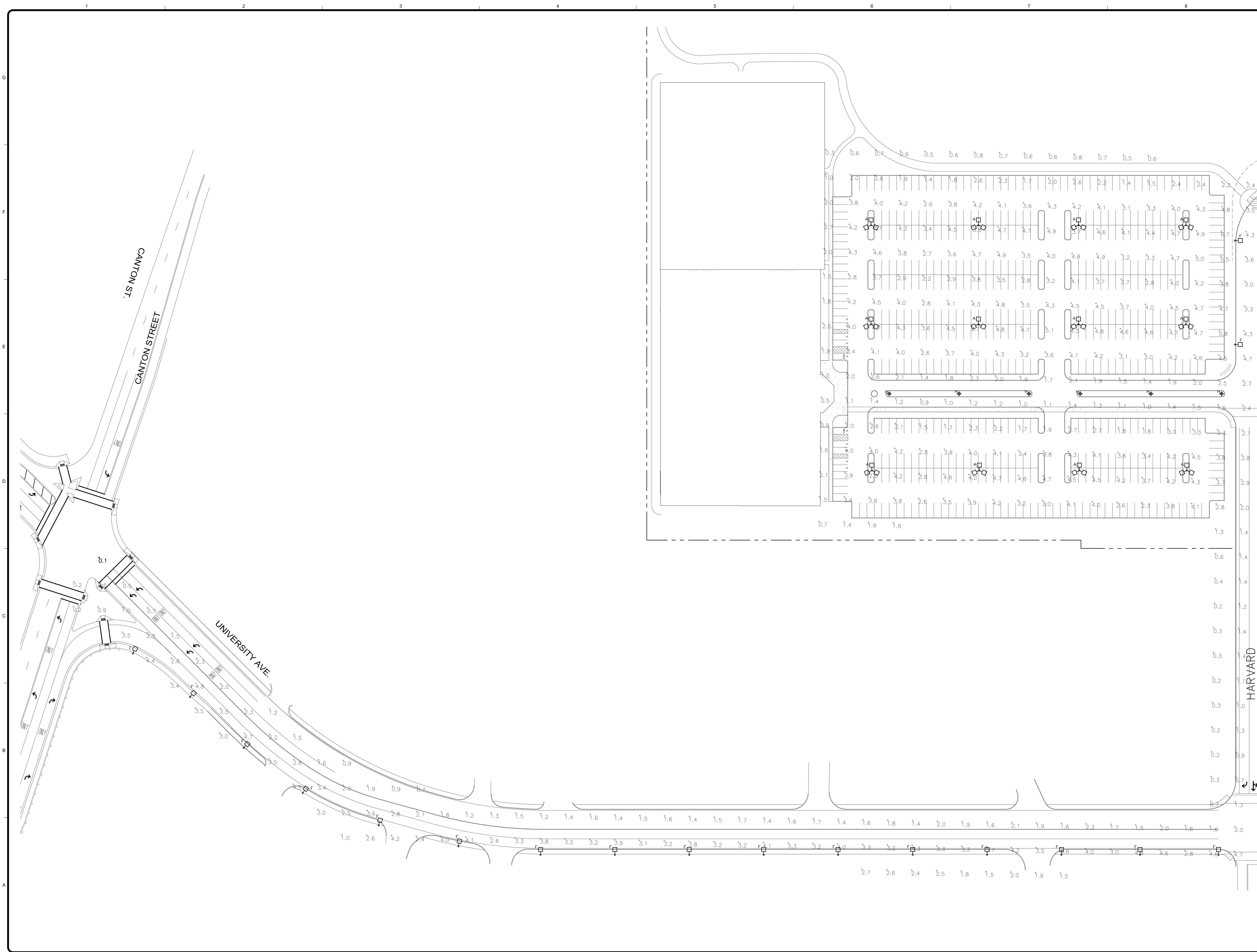
University Station - University Avenue
Redevelopment

Site Lighting Plan

SL-7

Copyright: Tetra Tech

3/18/2013 8:13:26 AM - K:\UNIVERSITY STATION\UNIVERSITY STATION SL-8.DWG - STATION 218



EA
 ENGINEERING ADVANTAGE, INC.
 2 PARK ST.
 BOSTON, MASSACHUSETTS 02122
 PHONE: (617) 288-3969
 FAX: (617) 825-8922

MARK	DATE	DESCRIPTION
1	11/09/12	SITE LIGHTING PACKAGE
2	03/22/13	REVISED SITE DEVELOPMENT PLANS

BY	DESCRIPTION
CJC	

Client: Westwood Marketplace Holdings LLC
 Proj. Loc.: University Ave, Westwood, MA
 University Station - University Avenue
 Redevelopment

Project No.: 127-3659-12003
 Designed By: LAF
 Drawn By: CJC
 Checked By: LAF

SL-8

Bar Measures 1 inch

Copyright: Tetra Tech