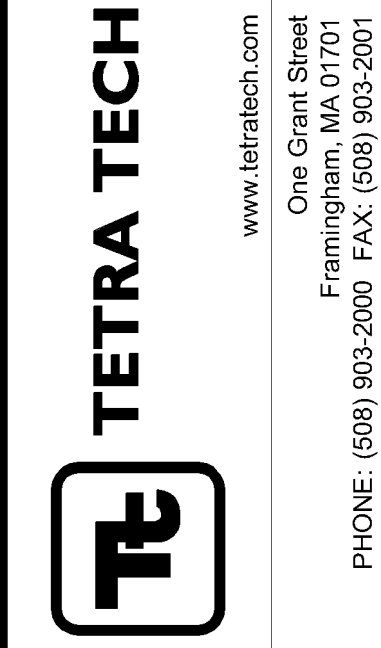
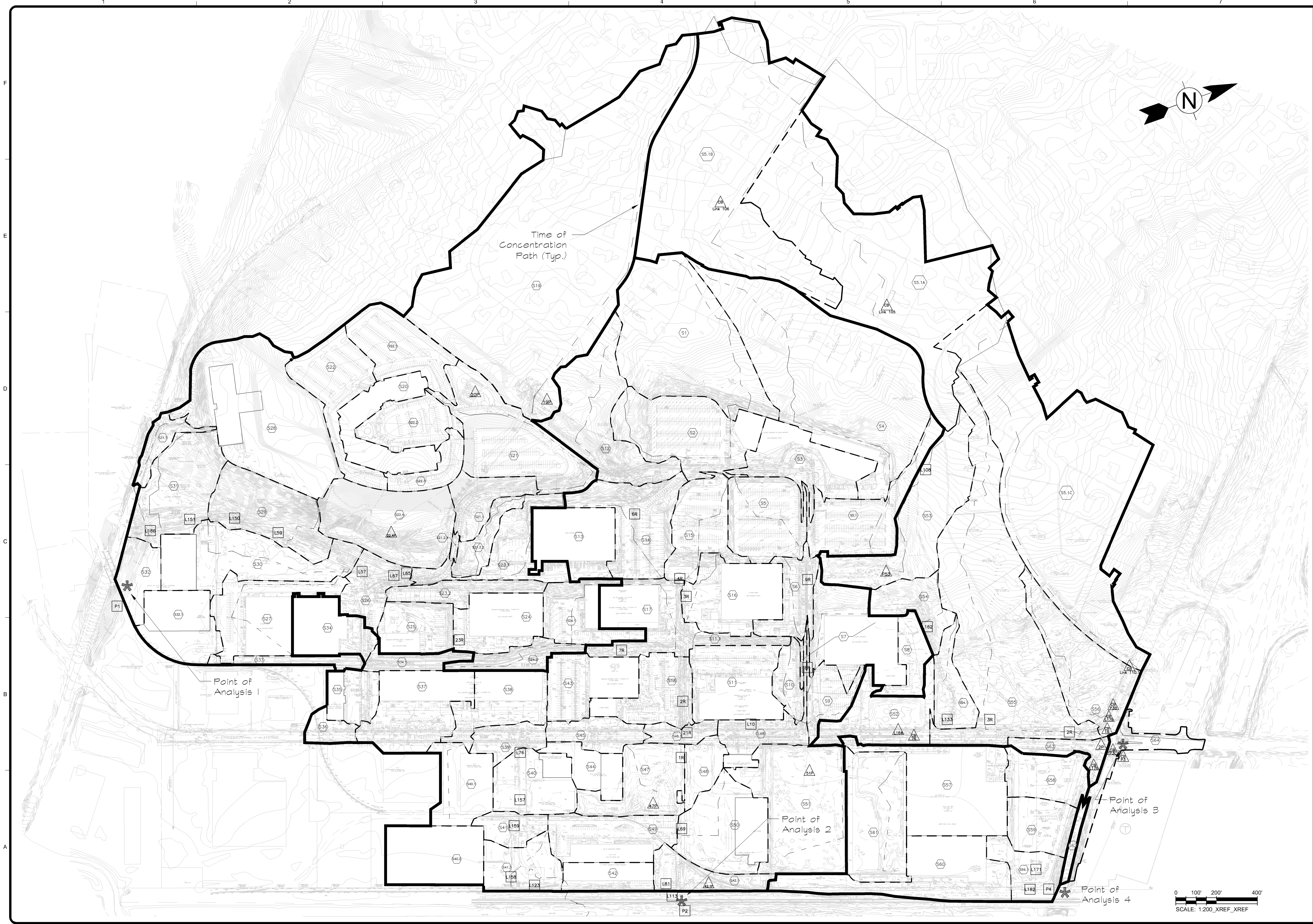


11/30/2012 3:28:45 PM - P:\36559127-3659-12003\CAD\SHEETFILES\WATERSHED\FIGURES\C-801 EXISTING WATERSHED.DWG - VANDO, SHAUN



MARK	DATE	DESCRIPTION	BY
1	10/9/12	Preliminary Site Development Plans	N.H.C.
2	11/30/12	Revised Site Development Plans	N.H.C.

Client: Westwood Marketplace Holdings LLC  
 Proj. Loc.: University Ave, Westwood, MA  
 University Station - University Avenue  
 Redevelopment  
 Existing Watershed Model

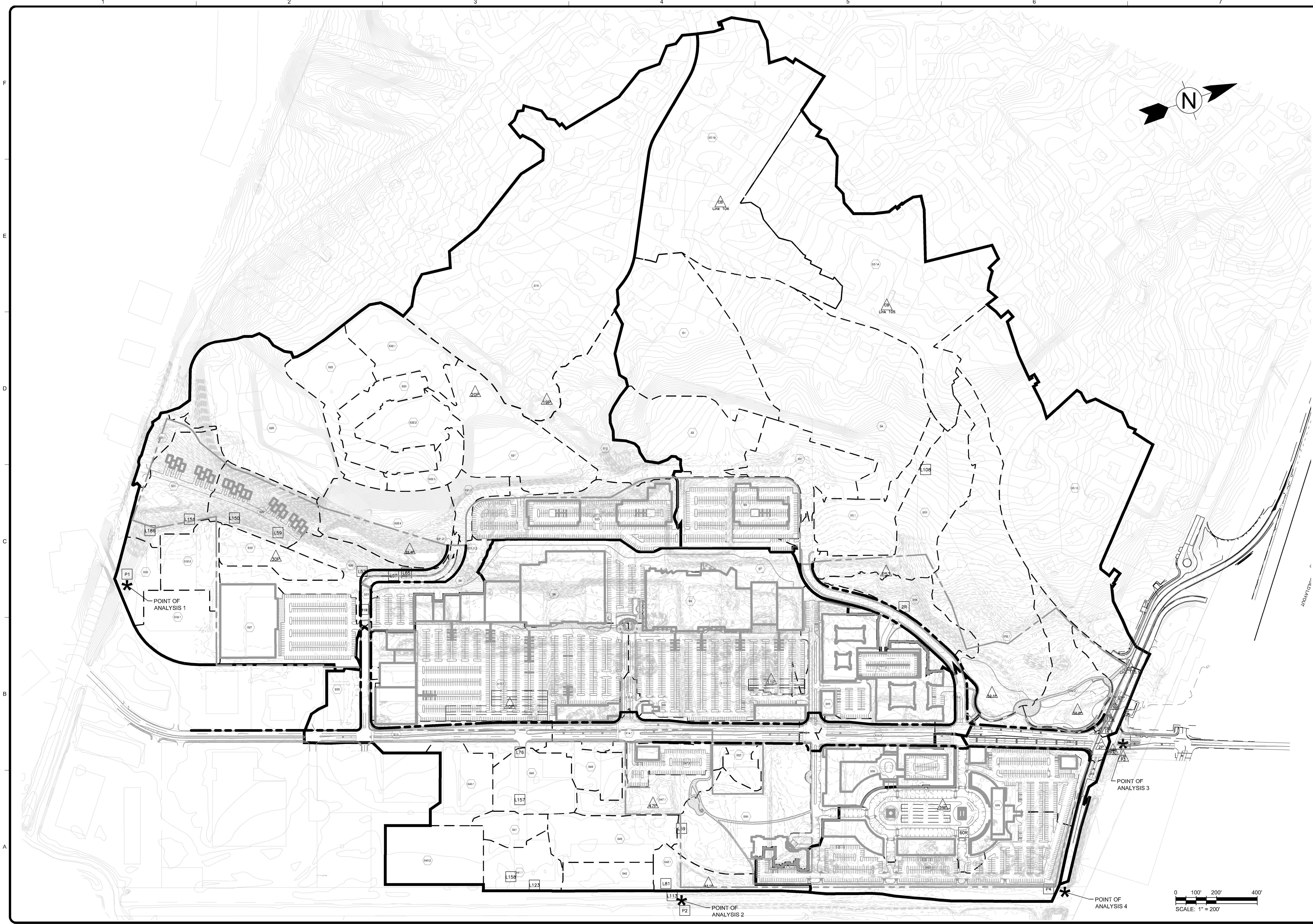
Project No.: 127-3659-12003  
 Designed By: N.H.C.  
 Drawn By: J.V.B.  
 Checked By: R.F.D.

**Figure 4**

Bar Measures 1 inch



11/30/2012 3:36:22 PM - P:\3659\127-3659-12003\CAD\SHHEE\FILES\WATERSHED\FIGURES\C-802\PROPOSED WATERSHED.DWG - VANDO, SHAUN



www.tetra-tech.com  
 One Grant Street  
 Framingham, MA 01701  
 PHONE: (508) 903-2000 FAX: (508) 903-2001

MARK	DATE	DESCRIPTION	BY
1	10/9/12	Preliminary Site Development Plans	N.H.C.
2	11/30/12	Revised Site Development Plans	N.H.C.

Client: Westwood Marketplace Holdings LLC  
 Proj. Loc.: University Ave, Westwood, MA  
**University Station - University Avenue  
 Redevelopment**

Project No.: 127-3659-12003  
 Designed By: N.H.C.  
 Drawn By: J.V.B.  
 Checked By: R.F.D.

**Figure 5**

Bar Measures 1 inch

Copyright: Tetra Tech