



ARCHITECTURE |
PLANNING
INTERIOR DESIGN | VDC
BRANDED ENVIRONMENTS

BOSTON
200 HIGH ST.
BOSTON, MA, 02110

SGA-ARCH.COM
857.900.2610

Station Drive - BTS

University Station

Westwood, MA



PROJECT TEAM:

CLIENT
UNIVERSITY STATION PHASE 2, LLC
C/O NATIONAL DEVELOPMENT

2310 Washington Street
Newton Lower Falls, MA 02462

617-965-7300

ARCHITECT

SGA

200 High Street
Boston, MA, 02110

857.300.2610

SPECIFICATIONS

KALIN ASSOCIATES, INC.

1121 Washington Street
Newton, MA 02465

617-964-5477

GEOTECHNICAL ENGINEER
SANBORN, HEAD & ASSOC., INC.

1 Technology Park Drive
Westford, MA 01886
978-577-1009

CIVIL ENGINEER
TETRA TECH

100 Nickerson Road
Marlborough, MA 01752
508-786-2200

STRUCTURAL ENGINEER
MCMAMARA/ SALVIA

101 Federal Street Suite 1100
Boston, MA 02110
617-850-4131

MEP ENGINEER
WB ENGINEERS

155 Seaport Boulevard
Boston, MA 02210
617-398-5202

LANDSCAPE ARCHITECTS
SHADLEY ASSOCIATES

1730 Massachusetts Avenue
Lexington, MA 02420
781-652-8809

CODE CONSULTANTS
CODE RED CONSULTANTS

154 Turnpike Road, Suite 200
Southborough, MA 01772
617-925-7813

© Spagnolo Gisness & Associates, Inc.
2/2019

Station Drive - BTS

Westwood, MA

University Station

Project No.4659.01
2/20/19
REVISION
4/2/2019



200 HIGH ST. BOSTON, MA, 02110
857.300.2610 | SCA-ARCH.COM

PROJECT TEAM:

CLIENT
UNIVERSITY STATION PHASE 2, LLC
C/O NATIONAL DEVELOPMENT

2310 Washington Street
Newton Lower Falls, MA 02462
617-965-7300
GEOTECHNICAL ENGINEER
SANBORN, HEAD & ASSOC., INC.

1 Technology Park Drive
Westford, MA 01886
978-577-1009

CIVIL ENGINEER
TETRA TECH

100 Nickerson Road
Marlborough, MA 01752
508-786-2200

STRUCTURAL ENGINEER
MCNAMARA/ SALVIA

101 Federal Street Suite 1100
Boston, MA 02110
617-850-4131

MEP ENGINEER
WB ENGINEERS

155 Seaport Boulevard
Boston, MA 02210
617-398-5202

LANDSCAPE ARCHITECTS
SHADLEY ASSOCIATES

1730 Massachusetts Avenue
Lexington, MA 02420
781-652-8809

CODE CONSULTANTS
CODE RED CONSULTANTS

154 Turnpike Road, Suite 200
Southborough, MA 01772
617-925-7813

SPECIFICATIONS
KALIN ASSOCIATES, INC.

1121 Washington Street
Newton, MA 02465
617-964-5477



[Signature]

SEAL / SIGNATURE

© Spagnolo Gisness & Associates, Inc.
2/20/19

PROJECT:

Station Drive - BTS

Westwood, MA

University Station

REVISIONS:

No.	Date	Description

SUBMISSIONS:

Date	Issued For:
02.20.19	PDR Submission
04.02.19	PDR Submission II

SCALE

DATE ISSUED 2/20/19

PROJECT NO 4659.01

DRAWN BY EZ

CHECKED BY JC

SHEET TITLE:

Renderings

G-200



200 HIGH ST. BOSTON, MA, 02110
857.300.2610 | SCA-ARCH.COM

PROJECT TEAM:

CLIENT
UNIVERSITY STATION PHASE 2, LLC
C/O NATIONAL DEVELOPMENT

2310 Washington Street
Newton Lower Falls, MA 02462
617-965-7300
GEOTECHNICAL ENGINEER
SANBORN, HEAD & ASSOC., INC.

1 Technology Park Drive
Westford, MA 01886
978-577-1009

CIVIL ENGINEER
TETRA TECH

100 Nickerson Road
Marlborough, MA 01752
508-786-2200

STRUCTURAL ENGINEER
MCNAMARA/ SALVIA

101 Federal Street Suite 1100
Boston, MA 02110
617-850-4131

MEP ENGINEER
WB ENGINEERS

155 Seaport Boulevard
Boston, MA 02210
617-398-5202

LANDSCAPE ARCHITECTS
SHADLEY ASSOCIATES

1730 Massachusetts Avenue
Lexington, MA 02420
781-652-8809

CODE CONSULTANTS
CODE RED CONSULTANTS

154 Turnpike Road, Suite 200
Southborough, MA 01772
617-925-7813

SPECIFICATIONS
KALIN ASSOCIATES, INC.

1121 Washington Street
Newton, MA 02465
617-964-5477



William G. Spagnolo

SEAL / SIGNATURE

© Spagnolo Gisness & Associates, Inc.
2/20/19

PROJECT:

Station Drive - BTS

Westwood, MA

University Station

REVISIONS:

No.	Date	Description

SUBMISSIONS:

Date	Issued For:
02.20.19	PDR Submission
04.02.19	PDR Submission II

SCALE

DATE ISSUED 2/20/19

PROJECT NO 4659.01

DRAWN BY EZ

CHECKED BY JC

SHEET TITLE:

Renderings 2

G-201

PROJECT TEAM:

CLIENT
UNIVERSITY STATION PHASE 2, LLC
C/O NATIONAL DEVELOPMENT

2310 Washington Street
Newton Lower Falls, MA 02462
617-965-7300
GEOTECHNICAL ENGINEER
SANBORN, HEAD & ASSOC., INC.

1 Technology Park Drive
Westford, MA 01886
978-577-1009

CIVIL ENGINEER
TETRA TECH

100 Nickerson Road
Marlborough, MA 01752
508-786-2200

STRUCTURAL ENGINEER
MCNAMARA SALVIA

101 Federal Street Suite 1100
Boston, MA 02110
617-850-4131

MEP ENGINEER
WB ENGINEERS

155 Seaport Boulevard
Boston, MA 02210
617-398-5202

LANDSCAPE ARCHITECTS
SHADLEY ASSOCIATES

1730 Massachusetts Avenue
Lexington, MA 02420
781-652-8809

CODE CONSULTANTS
CODE RED CONSULTANTS

154 Turnpike Road, Suite 200
Southborough, MA 01772
617-925-7813

SPECIFICATIONS
KALIN ASSOCIATES, INC.

1121 Washington Street
Newton, MA 02465
617-964-5477



SEAL / SIGNATURE

© Spagnolo Gisness & Associates, Inc.
2/20/19

PROJECT:

Station Drive - BTS

Westwood, MA

University Station

REVISIONS:

No.	Date	Description

SUBMISSIONS:

Date	Issued For:
02.20.19	PDR Submission
04.02.19	PDR Submission II

SCALE 1/8" = 1'-0"

DATE ISSUED 2/20/19

PROJECT NO 4659.01

DRAWN BY DE / EZ

CHECKED BY JC

SHEET TITLE:

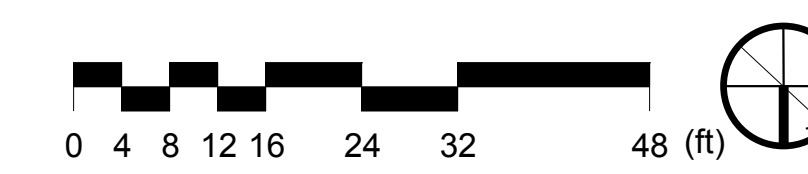
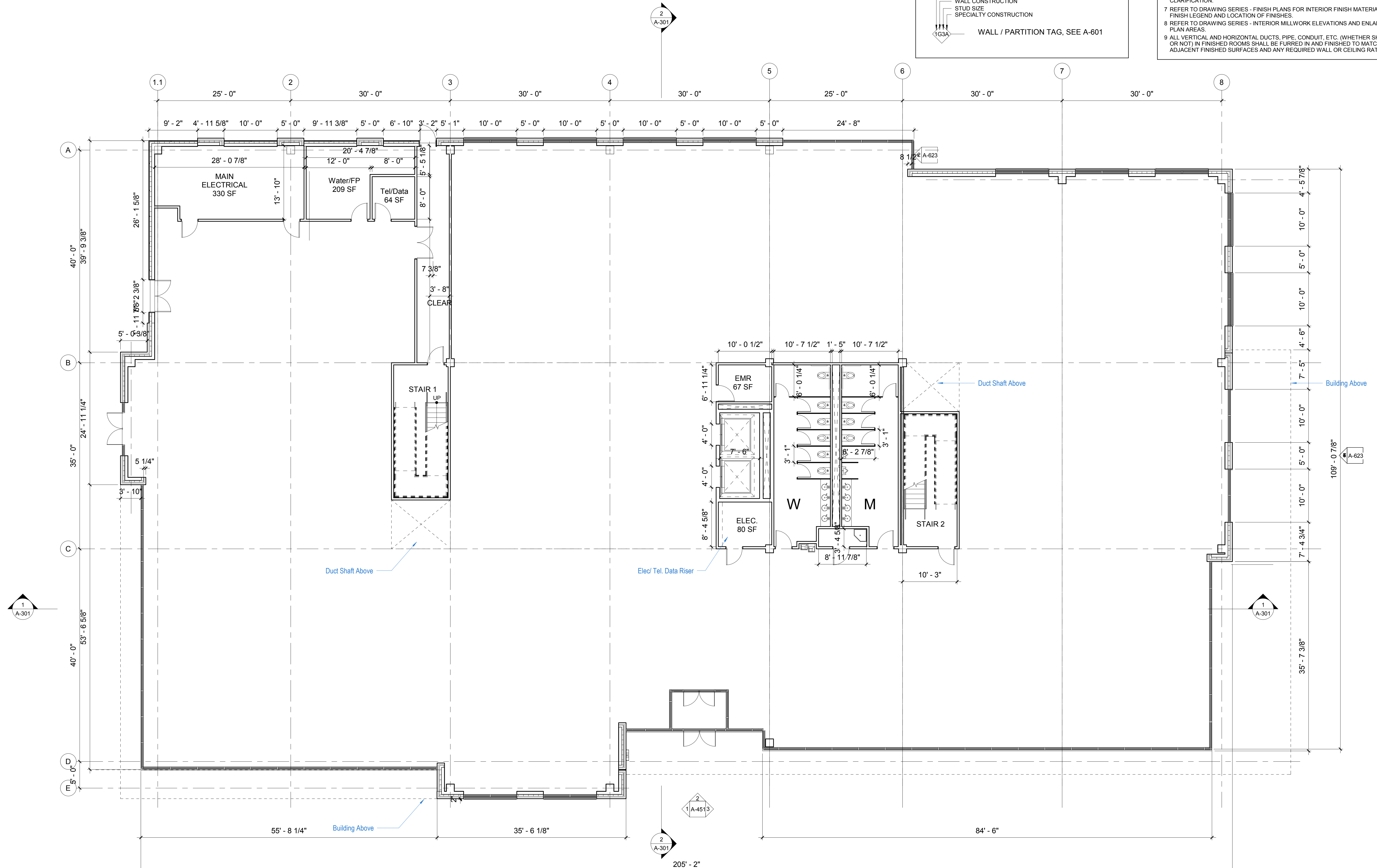
Level 1 Plan

Plan Symbol Legend

- Room name
101 ROOM TAG
- 4'-0" SPOT ELEVATION
- 101 DOOR TAG, SEE A-611
- TYPE NAME
TYPE NUMBER
STOREFRONT / CURTAIN WALL TAG, SEE A-621
- FIRE RATING
WALL CONSTRUCTION
STUD SIZE
SPECIALTY CONSTRUCTION
WALL / PARTITION TAG, SEE A-601

Plan Notes

- 1 REFER TO GENERAL CONDITIONS, SPECIFICATIONS AND SCHEDULES FOR ALL WORK.
- 2 DRAWINGS LISTED UNDER 'DRAWING LIST' MUST BE READ IN CONJUNCTION WITH THIS DRAWING FOR COMPLETE INFORMATION.
- 3 CONFIRM WITH ARCHITECT THAT THESE DRAWINGS ARE THE MOST CURRENT ISSUE BEFORE BEGINNING LAYOUT AND CONSTRUCTION.
- 4 CONTRACTOR MUST GIVE ARCHITECT (4) WORKING DAYS NOTICE TO REVIEW PARTITIONS, FLOOR OUTLETS AND FURNITURE PANEL SYSTEM LAYOUT AT 'CHALK LINE' STAGE. TRACK AND STUD WORK SHALL NOT BEGIN BEFORE ARCHITECT HAS REVIEWED ENTIRE LAYOUT.
- 5 FOR DOOR AND HARDWARE INFORMATION REFER TO DOOR AND HARDWARE SHEET.
- 6 INTERIOR DETAILS ARE KEYED TO THE PLANS AT TYPICAL LOCATIONS. THE DETAILS APPLY TO ALL LOCATIONS THAT ARE NOT KEYED - IN AN AREA OF THE SAME CONSTRUCTION AND SCOPE OF WORK. THE CONTRACTOR AND SUBCONTRACTORS ARE RESPONSIBLE TO COORDINATE THE LOCATION OF ALL TYPICAL DETAILS AND INSTALL THE WORK INDICATED. IF DISCREPANCIES EXIST OR QUALIFICATION IS REQUIRED THE CONTRACTOR IS TO NOTIFY THE ARCHITECT TO OBTAIN CLARIFICATION.
- 7 REFER TO DRAWING SERIES - FINISH PLANS FOR INTERIOR FINISH MATERIALS, FINISH LEGEND AND LOCATION OF FINISHES.
- 8 REFER TO DRAWING SERIES - INTERIOR MILLWORK ELEVATIONS AND ENLARGED PLAN AREAS.
- 9 ALL VERTICAL AND HORIZONTAL DUCTS, PIPE, CONDUIT, ETC. (WHETHER SHOWN OR NOT) IN FINISHED ROOMS SHALL BE FURRED IN AND FINISHED TO MATCH ADJACENT FINISHED SURFACES AND ANY REQUIRED WALL OR CEILING RATINGS.



PROJECT TEAM:

CLIENT
UNIVERSITY STATION PHASE 2, LLC
C/O NATIONAL DEVELOPMENT

2310 Washington Street
Newton Lower Falls, MA 02462
617-965-7300
GEOTECHNICAL ENGINEER
SANBORN, HEAD & ASSOC., INC.

1 Technology Park Drive
Westford, MA 01886
978-577-1009

CIVIL ENGINEER
TETRA TECH

100 Nickerson Road
Marlborough, MA 01752
508-786-2200

STRUCTURAL ENGINEER
MCNAMARA SALVIA

101 Federal Street Suite 1100
Boston, MA 02110
617-850-4131

MEP ENGINEER
WB ENGINEERS

155 Seaport Boulevard
Boston, MA 02210
617-398-5202

LANDSCAPE ARCHITECTS
SHADLEY ASSOCIATES

1730 Massachusetts Avenue
Lexington, MA 02420
781-652-8809

CODE CONSULTANTS
CODE RED CONSULTANTS

154 Turnpike Road, Suite 200
Southborough, MA 01772
617-925-7813

SPECIFICATIONS
KALIN ASSOCIATES, INC.

1121 Washington Street
Newton, MA 02465
617-964-5477



SEAL / SIGNATURE

© Spagnolo Gisness & Associates, Inc.
2/20/19

PROJECT:

Station Drive - BTS

Westwood, MA

University Station

REVISIONS:

No.	Date	Description

SUBMISSIONS:

Date	Issued For:
02.20.19	PDR Submission
04.02.19	PDR Submission II

SCALE 1/8" = 1'-0"

DATE ISSUED 2/20/19

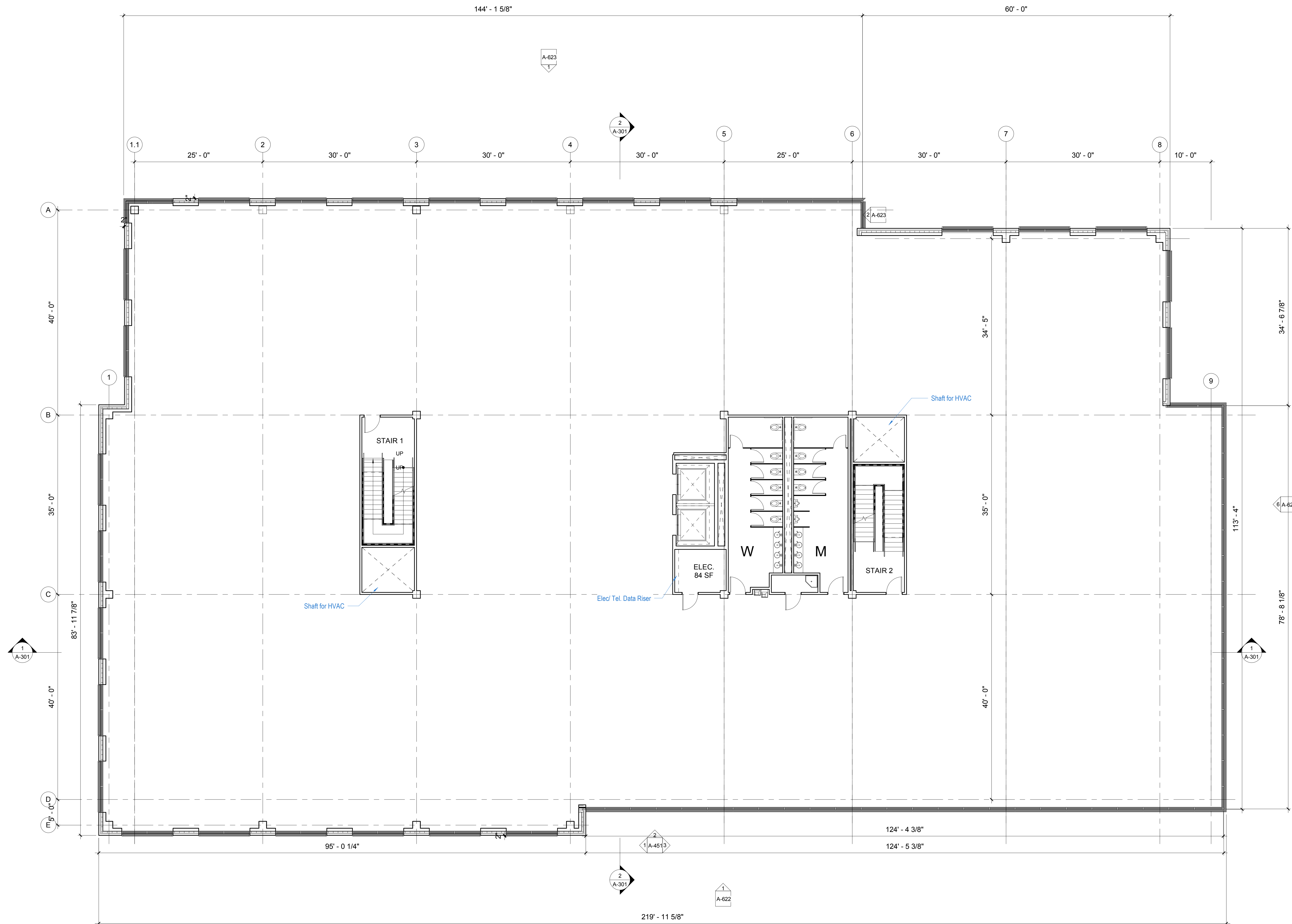
PROJECT NO 4659.01

DRAWN BY DE / EZ

CHECKED BY JC

SHEET TITLE:

Level 2 Plan





200 HIGH ST, BOSTON, MA, 02110
857.300.2610 | SCA-ARCH.COM

PROJECT TEAM:

CLIENT
UNIVERSITY STATION PHASE 2, LLC
C/O NATIONAL DEVELOPMENT

2310 Washington Street
Newton Lower Falls, MA 02462
617-965-7300
GEOTECHNICAL ENGINEER
SANBORN, HEAD & ASSOC., INC.

1 Technology Park Drive
Westford, MA 01886
978-577-1009

CIVIL ENGINEER
TETRA TECH

100 Nickerson Road
Marlborough, MA 01752
508-786-2200

STRUCTURAL ENGINEER
MCNAMARA/SALVIA

101 Federal Street Suite 1100
Boston, MA 02110
617-850-4131

MEP ENGINEER
WB ENGINEERS

155 Seaport Boulevard
Boston, MA 02210
617-398-5202

LANDSCAPE ARCHITECTS
SHADLEY ASSOCIATES

1730 Massachusetts Avenue
Lexington, MA 02420
781-652-8809

CODE CONSULTANTS
CODE RED CONSULTANTS

154 Turnpike Road, Suite 200
Southborough, MA 01772
617-925-7813

SPECIFICATIONS
KALIN ASSOCIATES, INC.

1121 Washington Street
Newton, MA 02465
617-964-5477



SEAL / SIGNATURE

© Spagnolo Gisness & Associates, Inc.
2/20/19

PROJECT:

Station Drive - BTS

Westwood, MA

University Station

REVISIONS:

No.	Date	Description

SUBMISSIONS:

Date	Issued For:
02.20.19	PDR Submission
04.02.19	PDR Submission II

SCALE 1/8" = 1'-0"

DATE ISSUED 2/20/19

PROJECT NO 4659.01

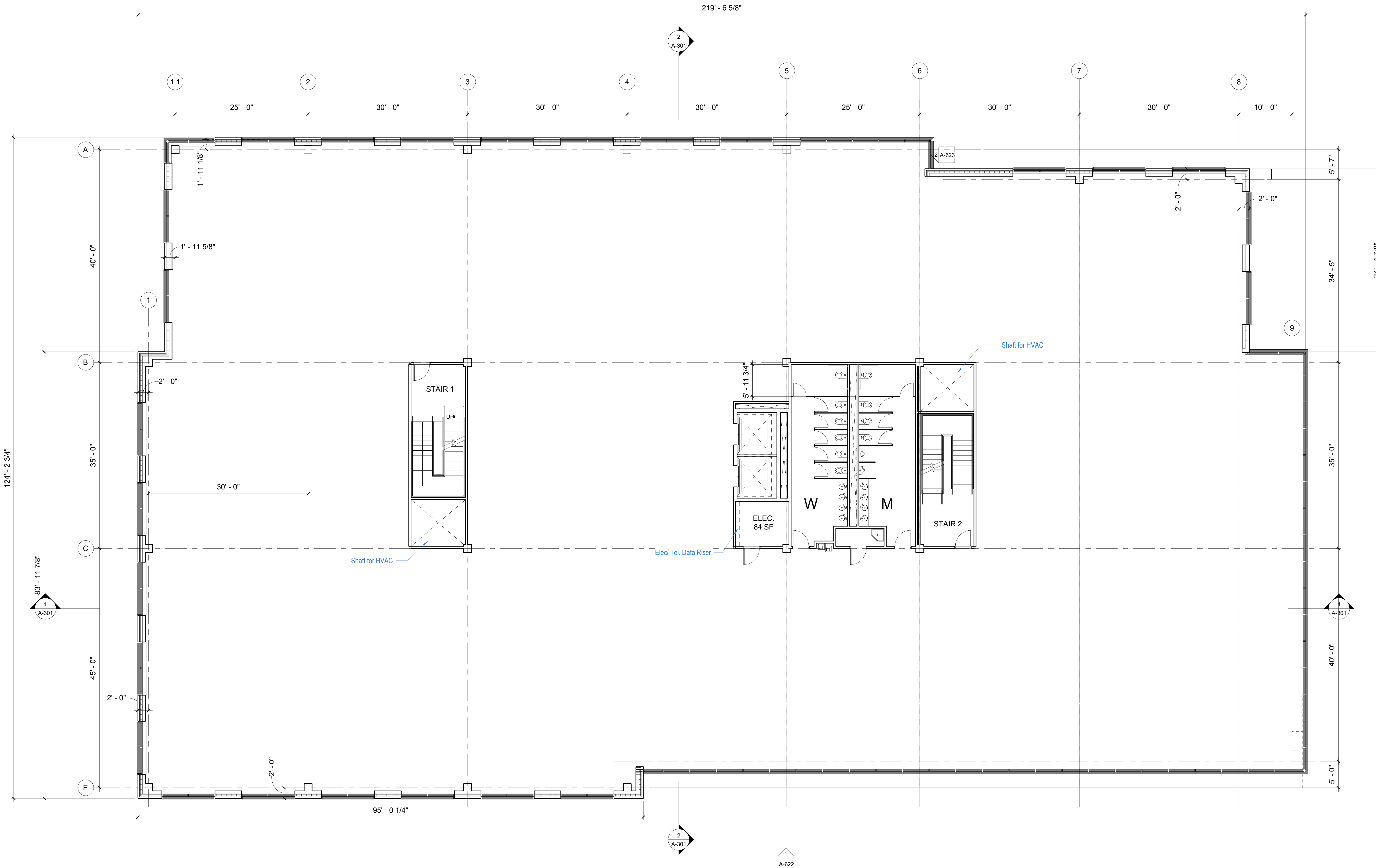
DRAWN BY DE / EZ

CHECKED BY JC

SHEET TITLE:

Level 3 Plan

A-103



PROJECT TEAM:

CLIENT
UNIVERSITY STATION PHASE 2, LLC
C/O NATIONAL DEVELOPMENT

2310 Washington Street
Newton Lower Falls, MA 02462
617-965-7300
GEOTECHNICAL ENGINEER
SANBORN, HEAD & ASSOC., INC.

1 Technology Park Drive
Westford, MA 01886
978-577-1009

CIVIL ENGINEER
TETRA TECH

100 Nickerson Road
Marlborough, MA 01752
508-786-2200

STRUCTURAL ENGINEER
MCNAMARA SALVIA

101 Federal Street Suite 1100
Boston, MA 02110
617-850-4131

MEP ENGINEER
WB ENGINEERS

155 Seaport Boulevard
Boston, MA 02210
617-398-5202

LANDSCAPE ARCHITECTS
SHADLEY ASSOCIATES

1730 Massachusetts Avenue
Lexington, MA 02420
781-652-8809

CODE CONSULTANTS
CODE RED CONSULTANTS

154 Turnpike Road, Suite 200
Southborough, MA 01772
617-925-7813

SPECIFICATIONS
KALIN ASSOCIATES, INC.

1121 Washington Street
Newton, MA 02465
617-964-5477



SEAL / SIGNATURE

© Spagnolo Gispness & Associates, Inc.
2/20/19

PROJECT:

Station Drive - BTS

Westwood, MA

University Station

REVISIONS:

No.	Date	Description

SUBMISSIONS:

Date	Issued For:
02.20.19	PDR Submission
04.02.19	PDR Submission II

SCALE 1/8" = 1'-0"

DATE ISSUED 2/20/19

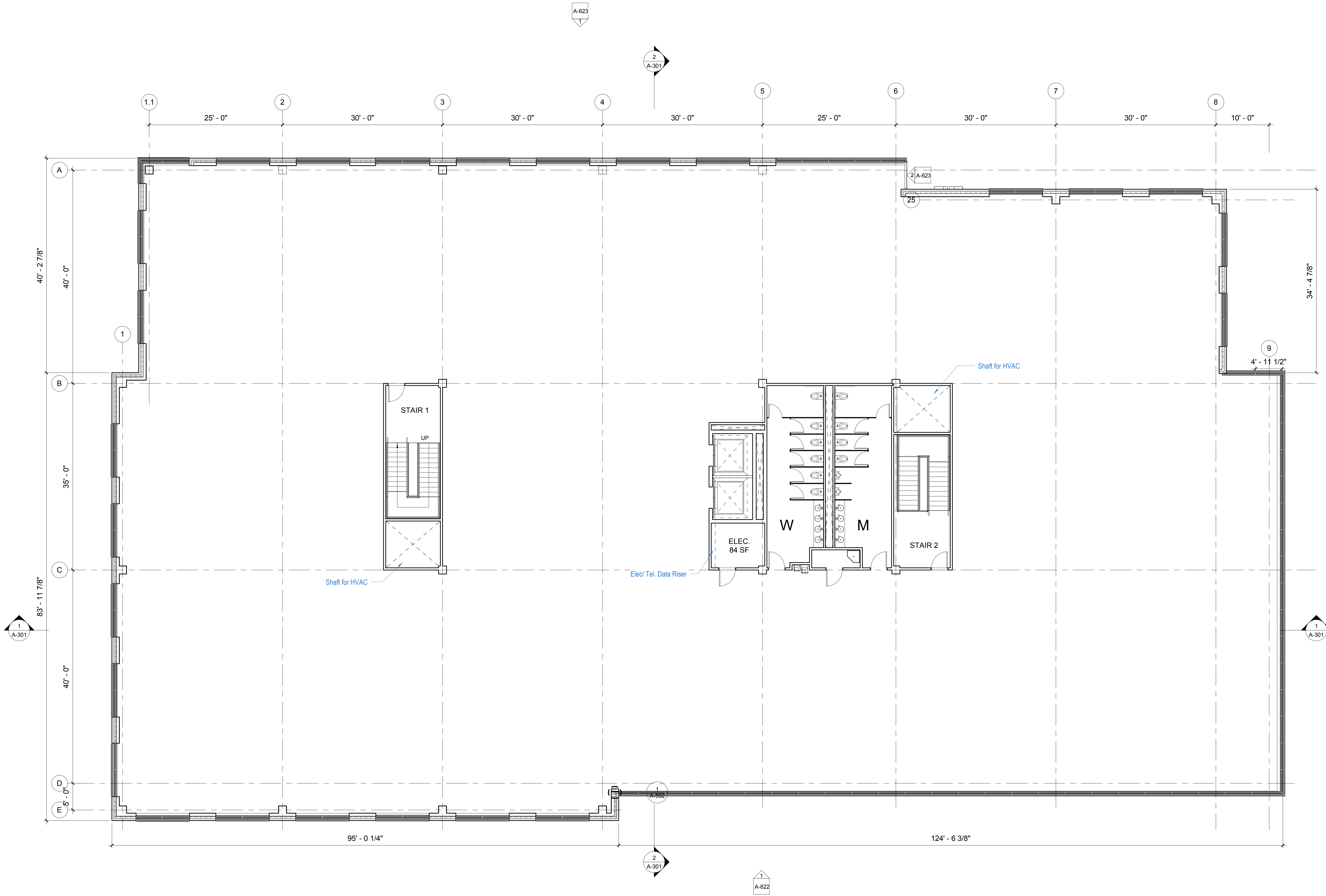
PROJECT NO 4659.01

DRAWN BY DE / EZ

CHECKED BY JC

SHEET TITLE:

Level 4 Plan





200 HIGH ST, BOSTON, MA, 02110
857.300.2610 | SCA-ARCH.COM

PROJECT TEAM:

CLIENT
UNIVERSITY STATION PHASE 2, LLC
C/O NATIONAL DEVELOPMENT

2310 Washington Street
Newton Lower Falls, MA 02462
617-965-7300
GEOTECHNICAL ENGINEER
SANBORN, HEAD & ASSOC., INC.

1 Technology Park Drive
Westford, MA 01886
978-577-1009

CIVIL ENGINEER
TETRA TECH

100 Nickerson Road
Marlborough, MA 01752
508-786-2200

STRUCTURAL ENGINEER
MCNAMARA/ SALVIA

101 Federal Street Suite 1100
Boston, MA 02110
617-850-4131

MEP ENGINEER
WB ENGINEERS

155 Seaport Boulevard
Boston, MA 02210
617-398-5202

LANDSCAPE ARCHITECTS
SHADLEY ASSOCIATES

1730 Massachusetts Avenue
Lexington, MA 02420
781-652-8809

CODE CONSULTANTS
CODE RED CONSULTANTS

154 Turnpike Road, Suite 200
Southborough, MA 01772
617-925-7813

SPECIFICATIONS
KALIN ASSOCIATES, INC.

1121 Washington Street
Newton, MA 02465
617-964-5477



SEAL / SIGNATURE

© Spagnolo Gisness & Associates, Inc.
2/20/19

PROJECT:

Station Drive - BTS

Westwood, MA

University Station

REVISIONS:

No.	Date	Description

SUBMISSIONS:

Date	Issued For:
02.20.19	PDR Submission
04.02.19	PDR Submission II

SCALE 1/8" = 1'-0"

DATE ISSUED 2/20/19

PROJECT NO 4659.01

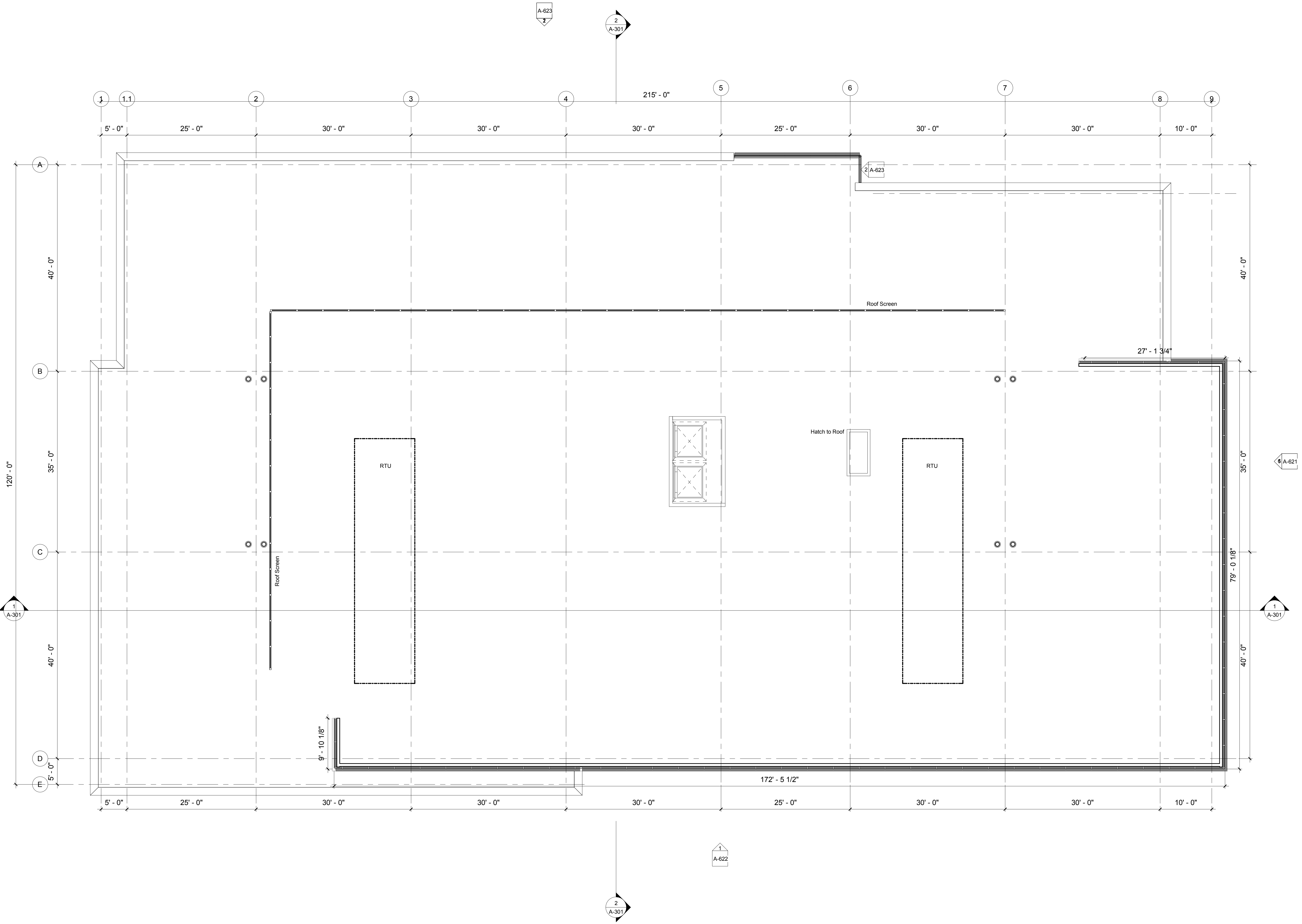
DRAWN BY DE / EZ

CHECKED BY JC

SHEET TITLE:

Roof Plan

A-105



A-2022

1
A-301

A-621

1
A-301

A-622

2
A-301

PROJECT TEAM:

CLIENT
UNIVERSITY STATION PHASE 2, LLC
C/O NATIONAL DEVELOPMENT

2310 Washington Street
Newton Lower Falls, MA 02462
617-965-7300
GEOTECHNICAL ENGINEER
SANBORN, HEAD & ASSOC., INC.

1 Technology Park Drive
Westford, MA 01886
978-577-1009

CIVIL ENGINEER
TETRA TECH

100 Nickerson Road
Marlborough, MA 01752
508-786-2200

STRUCTURAL ENGINEER
MCNAMARA SALVIA

101 Federal Street Suite 1100
Boston, MA 02110
617-850-4131

MEP ENGINEER
WB ENGINEERS

155 Seaport Boulevard
Boston, MA 02210
617-398-5202

LANDSCAPE ARCHITECTS
SHADLEY ASSOCIATES

1730 Massachusetts Avenue
Lexington, MA 02420
781-652-8809

CODE CONSULTANTS
CODE RED CONSULTANTS

154 Turnpike Road, Suite 200
Southborough, MA 01772
617-925-7813

SPECIFICATIONS
KALIN ASSOCIATES, INC.

1121 Washington Street
Newton, MA 02465
617-964-5477



William G. Spagnolo

SEAL / SIGNATURE

© Spagnolo Gisness & Associates, Inc.
2/2019

PROJECT:

Station Drive - BTS

Westwood, MA

University Station

REVISIONS:

No.	Date	Description

SUBMISSIONS:

Date	Issued For:
02.20.19	PDR Submission
04.02.19	PDR Submission II

SCALE 1/8" = 1'-0"

DATE ISSUED 2/20/19

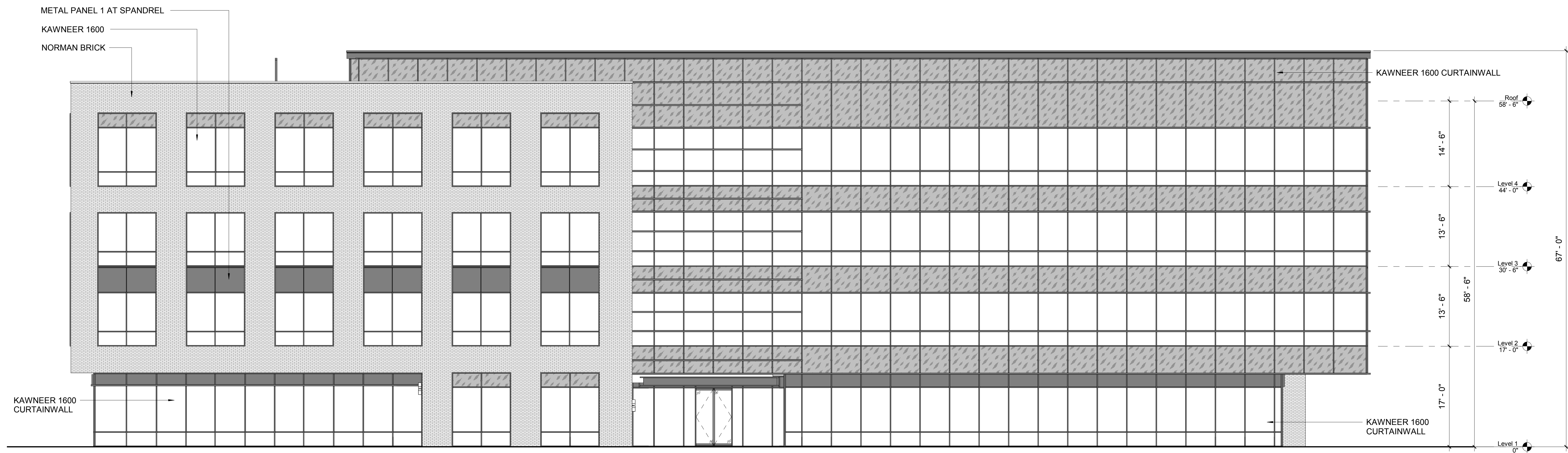
PROJECT NO 4659.01

DRAWN BY DE / EZ

CHECKED BY JC

SHEET TITLE:

Exterior Elevations



1 East Elevation
1/8" = 1'-0"



2 West Elevation
1/8" = 1'-0"

PROJECT TEAM:

CLIENT
UNIVERSITY STATION PHASE 2, LLC
C/O NATIONAL DEVELOPMENT

2310 Washington Street
Newton Lower Falls, MA 02462
617-965-7300
GEOTECHNICAL ENGINEER
SANBORN, HEAD & ASSOC., INC.

1 Technology Park Drive
Westford, MA 01886
978-577-1009

CIVIL ENGINEER
TETRA TECH

100 Nickerson Road
Marlborough, MA 01752
508-786-2200

STRUCTURAL ENGINEER
MCNAMARA/ SALVIA

101 Federal Street Suite 1100
Boston, MA 02110
617-850-4131

MEP ENGINEER
WB ENGINEERS

155 Seaport Boulevard
Boston, MA 02210
617-398-5202

LANDSCAPE ARCHITECTS
SHADLEY ASSOCIATES

1730 Massachusetts Avenue
Lexington, MA 02420
781-652-8809

CODE CONSULTANTS
CODE RED CONSULTANTS

154 Turnpike Road, Suite 200
Southborough, MA 01772
617-925-7813

SPECIFICATIONS
KALIN ASSOCIATES, INC.

1121 Washington Street
Newton, MA 02465
617-964-5477



SEAL / SIGNATURE

© Spagnolo Gisness & Associates, Inc.
2/2019

PROJECT:

Station Drive - BTS

Westwood, MA

University Station

REVISIONS:

No.	Date	Description

SUBMISSIONS:

Date	Issued For:
02.20.19	PDR Submission
04.02.19	PDR Submission II

SCALE 1/8" = 1'-0"

DATE ISSUED 2/20/19

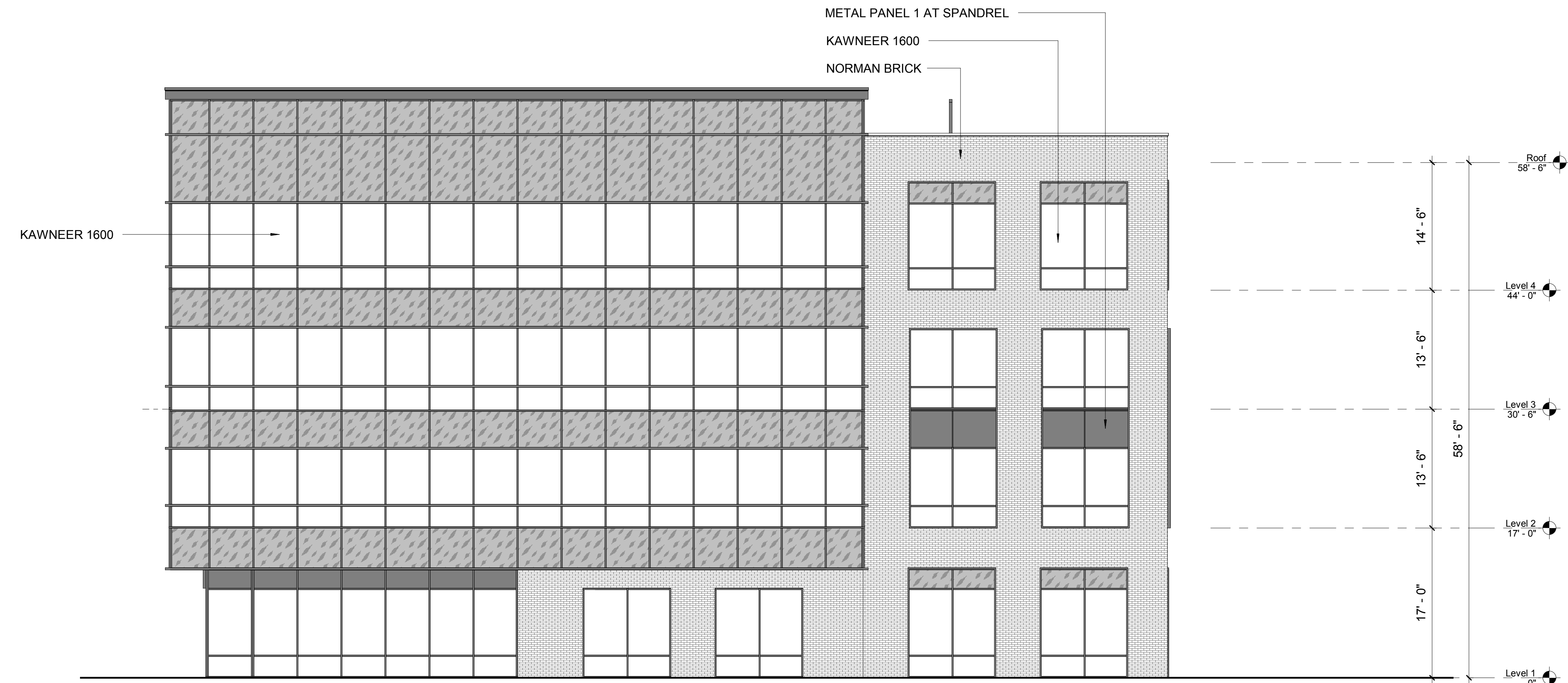
PROJECT NO 4659.01

DRAWN BY DE / EZ

CHECKED BY JC

SHEET TITLE:

Exterior Elevations



1 North Elevation
1/8" = 1'-0"



2 South Elevation
1/8" = 1'-0"



200 HIGH ST, BOSTON, MA, 02110
857.300.2610 | SCA-ARCH.COM

PROJECT TEAM:

CLIENT
UNIVERSITY STATION PHASE 2, LLC
C/O NATIONAL DEVELOPMENT

2310 Washington Street
Newton Lower Falls, MA 02462
617-965-7300
GEOTECHNICAL ENGINEER
SANBORN, HEAD & ASSOC., INC.

1 Technology Park Drive
Westford, MA 01886
978-577-1009

CIVIL ENGINEER
TETRA TECH

100 Nickerson Road
Marlborough, MA 01752
508-786-2200

STRUCTURAL ENGINEER
MCNAMARA/ SALVIA

101 Federal Street Suite 1100
Boston, MA 02110
617-850-4131

MEP ENGINEER
WB ENGINEERS

155 Seaport Boulevard
Boston, MA 02210
617-398-5202

LANDSCAPE ARCHITECTS
SHADLEY ASSOCIATES

1730 Massachusetts Avenue
Lexington, MA 02420
781-652-8809

CODE CONSULTANTS
CODE RED CONSULTANTS

154 Turnpike Road, Suite 200
Southborough, MA 01772
617-925-7813

SPECIFICATIONS
KALIN ASSOCIATES, INC.

1121 Washington Street
Newton, MA 02465
617-964-5477



William G. Spagnolo

SEAL / SIGNATURE

© Spagnolo Gisness & Associates, Inc.
2/20/19

PROJECT:

Station Drive - BTS

Westwood, MA

University Station

REVISIONS:

No.	Date	Description

SUBMISSIONS:

Date	Issued For:
02.20.19	PDR Submission
04.02.19	PDR Submission II

SCALE

DATE ISSUED 2/20/19

PROJECT NO 4659.01

DRAWN BY EZ

CHECKED BY JC

SHEET TITLE:

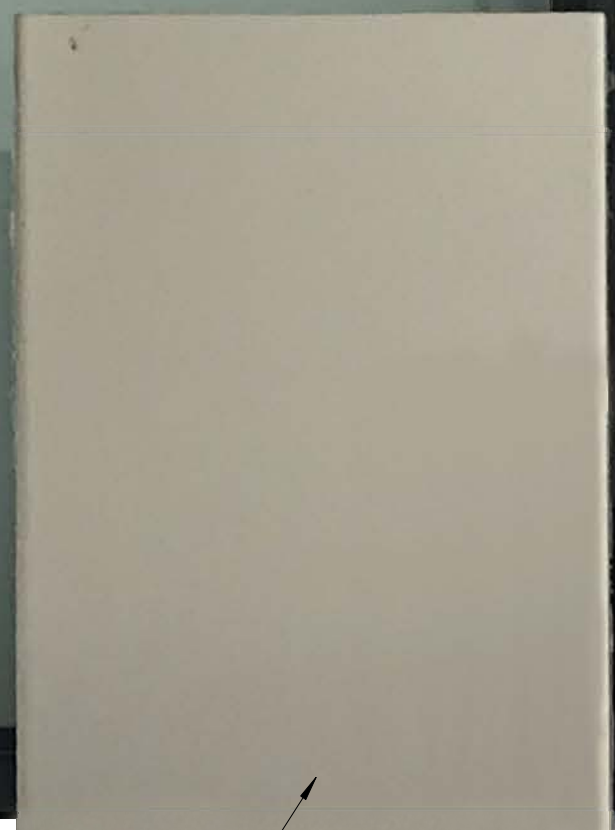
Exterior

Materials

A-203



HIGH PERFORMANCE GLASS
(VIRACON VE-2M #2)



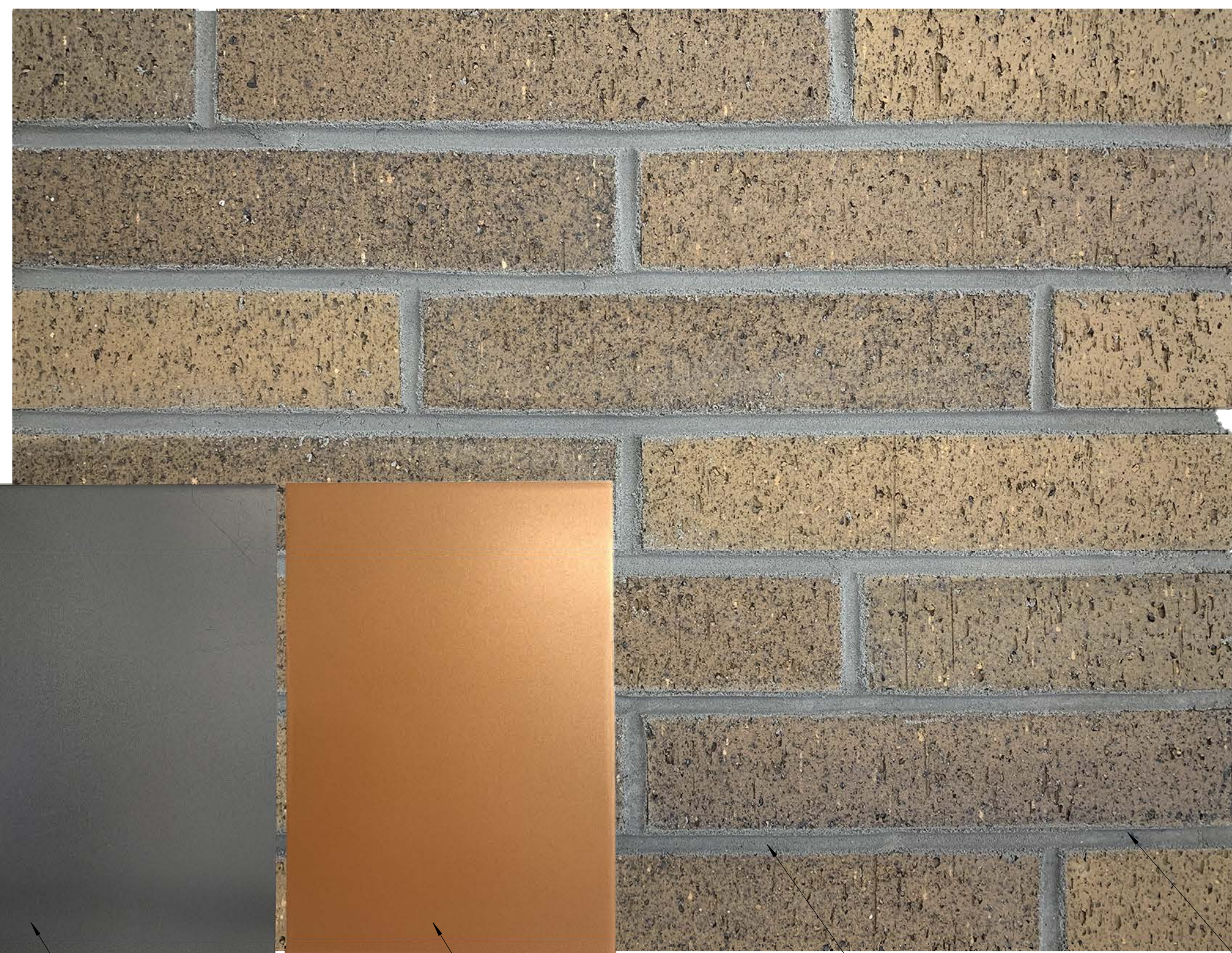
METAL PANEL - TITANIUM
WINDOW MULLION AND CAP FLASHING



METAL PANEL - PEWTER
WINDOW INFILL PANEL



METAL PANEL - COPPER PENNY
CANTILEVER SOFFIT PANEL



GROUT (COLOR- PLATINUM)

EARTH TONE NORMAN BRICK
(70% BADLANDS BLEND/ 30% TOASTED FINE ARTS VELOUR BLEND)



200 HIGH ST, BOSTON, MA, 02110
857.300.2610 | SCA-ARCH.COM

PROJECT TEAM:

CLIENT
UNIVERSITY STATION PHASE 2, LLC
C/O NATIONAL DEVELOPMENT

2310 Washington Street
Newton Lower Falls, MA 02462
617-965-7300
GEOTECHNICAL ENGINEER
SANBORN, HEAD & ASSOC., INC.

1 Technology Park Drive
Westford, MA 01886
978-577-1009

CIVIL ENGINEER
TETRA TECH

100 Nickerson Road
Marlborough, MA 01752
508-786-2200

STRUCTURAL ENGINEER
MCNAMARA SALVIA

101 Federal Street Suite 1100
Boston, MA 02110
617-850-4131

MEP ENGINEER
WB ENGINEERS

155 Seaport Boulevard
Boston, MA 02210
617-398-5202

LANDSCAPE ARCHITECTS
SHADLEY ASSOCIATES

1730 Massachusetts Avenue
Lexington, MA 02420
781-652-8809

CODE CONSULTANTS
CODE RED CONSULTANTS

154 Turnpike Road, Suite 200
Southborough, MA 01772
617-925-7813

SPECIFICATIONS
KALIN ASSOCIATES, INC.

1121 Washington Street
Newton, MA 02465
617-964-5477



SEAL / SIGNATURE

© Spagnolo Gisness & Associates, Inc.
2/20/19

PROJECT:

Station Drive - BTS

Westwood, MA

University Station

REVISIONS:

No.	Date	Description

SUBMISSIONS:

Date	Issued For:
02.20.19	PDR Submission
04.02.19	PDR Submission II

SCALE 1/8" = 1'-0"

DATE ISSUED 2/20/19

PROJECT NO 4659.01

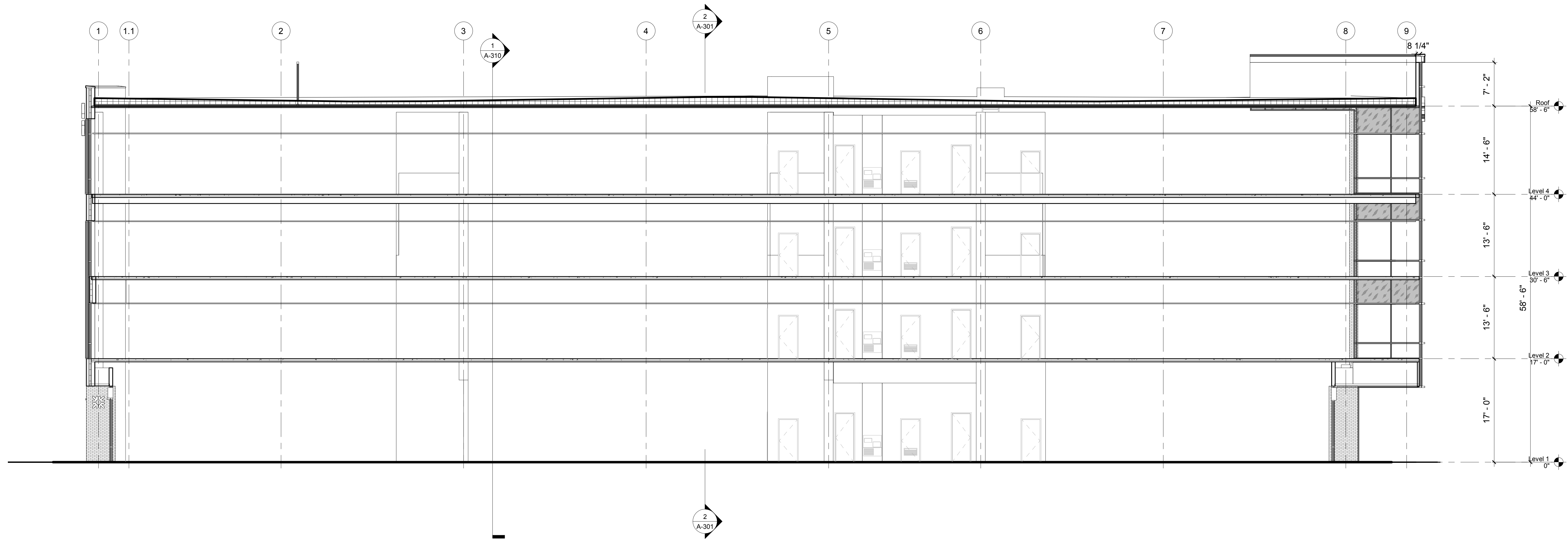
DRAWN BY DE

CHECKED BY JC

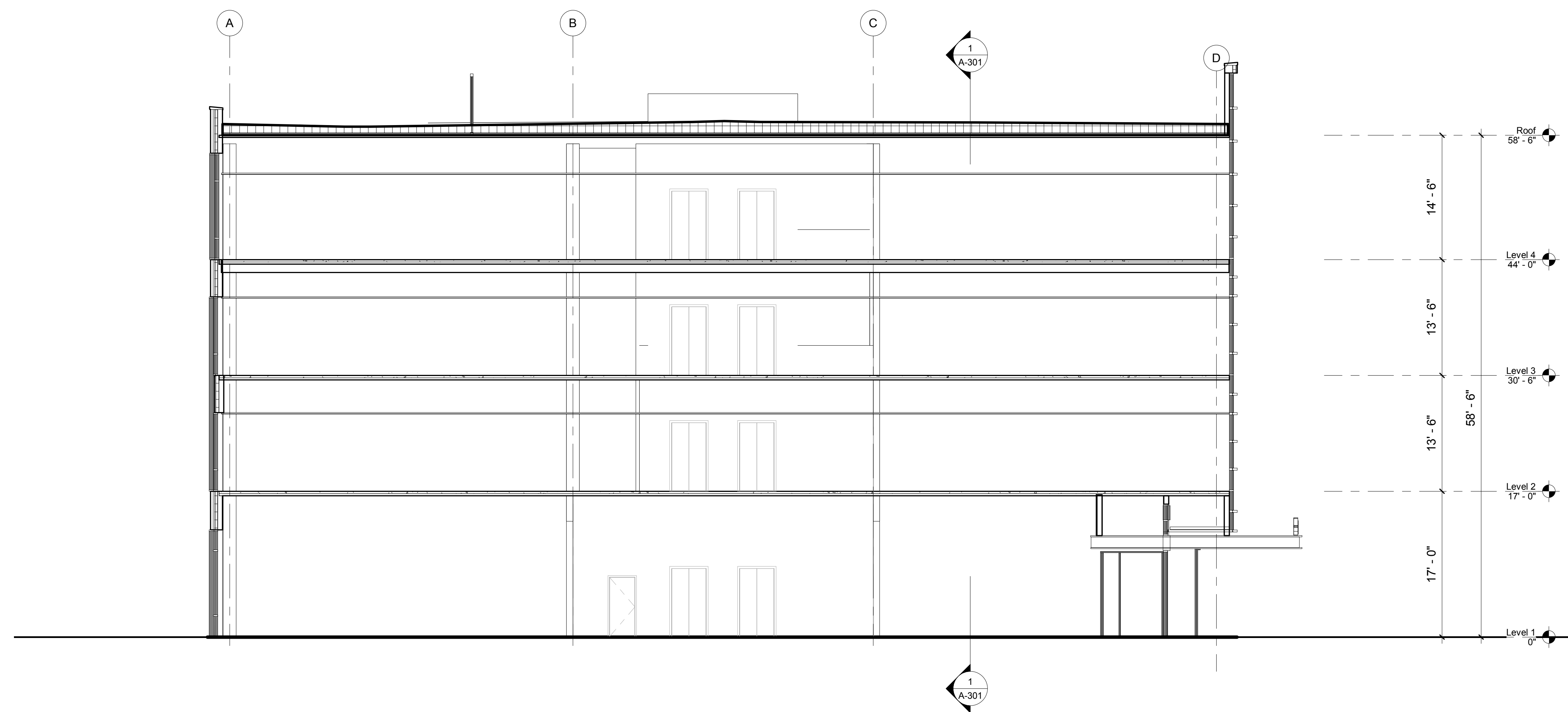
SHEET TITLE:

Building Sections

A-301



1 North - South Section
1/8" = 1'-0"



2 East West Section
1/8" = 1'-0"