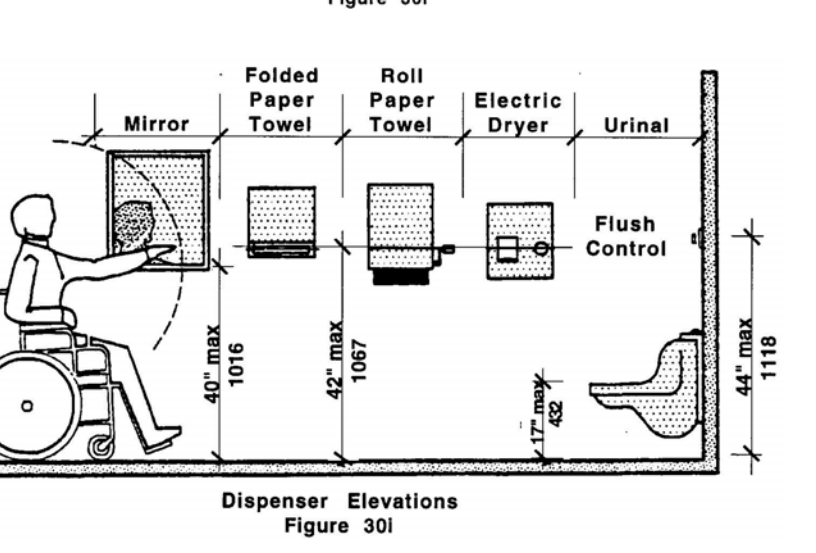
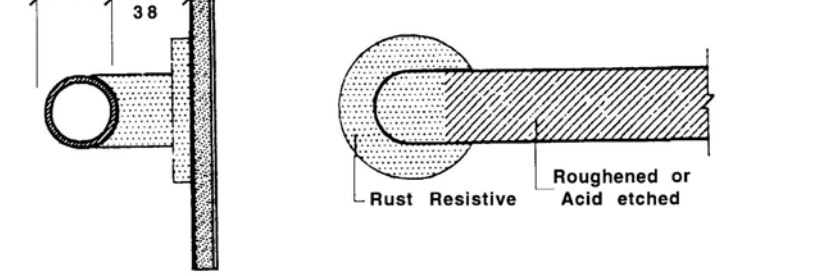
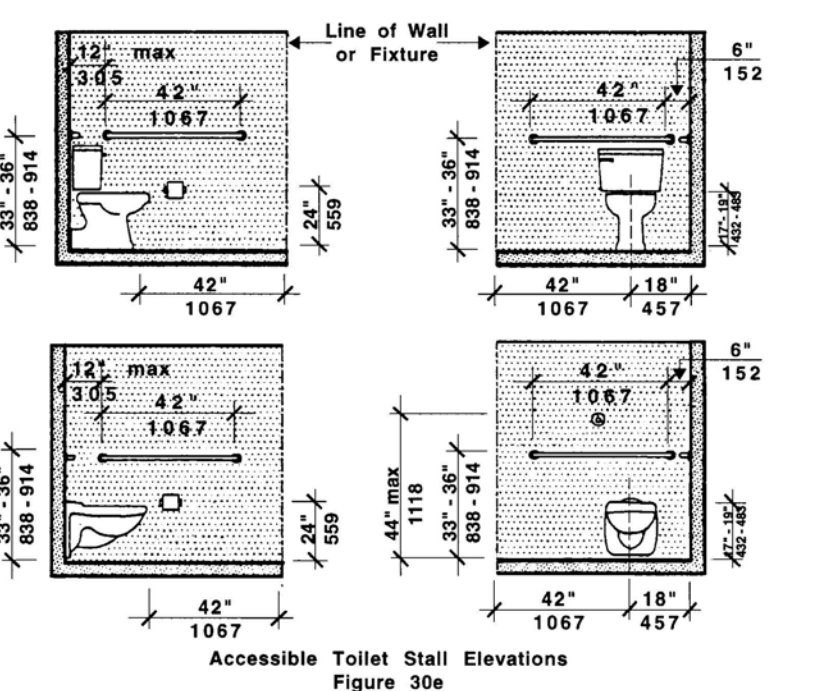
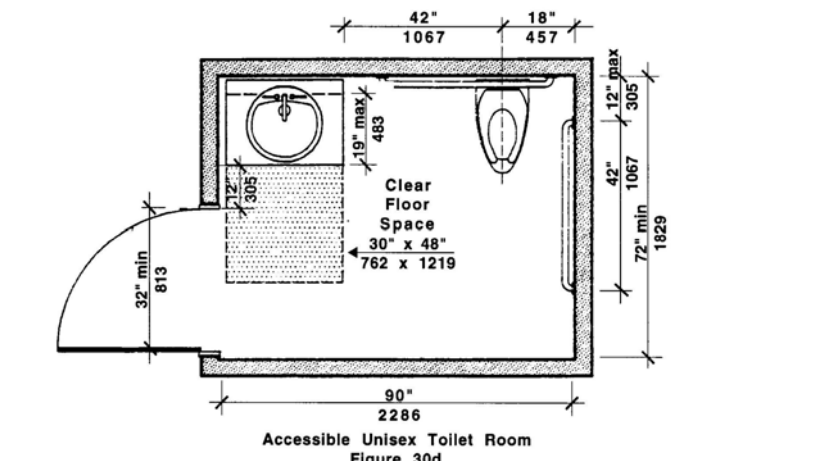


**ACCESSIBILITY GENERAL NOTES:**

- THESE FIGURES AND DIAGRAMS ARE THE MINIMUM STANDARDS FOR ACCESSIBILITY, WHICH HAVE BEEN BASED ON THE COMMODWEALTH OF MASSACHUSETTS ARCHITECTURAL ACCESS BOARD, 521 CMR. 2. THESE ARE FOR REFERENCE ONLY AND MAY NOT REFLECT ACTUAL LAYOUTS. DO NOT SCALE OR BUILD FROM THESE DRAWINGS. SEE ARCHITECTURAL DRAWINGS FOR ACTUAL LAYOUTS.
- DUE TO POSSIBLE UPDATES OR CHANGES IN CODE, REFER TO 521 CMR FOR ACTUAL AND CURRENT REQUIREMENTS.

**PUBLIC TOILET ROOMS/ CHANGING ROOMS**

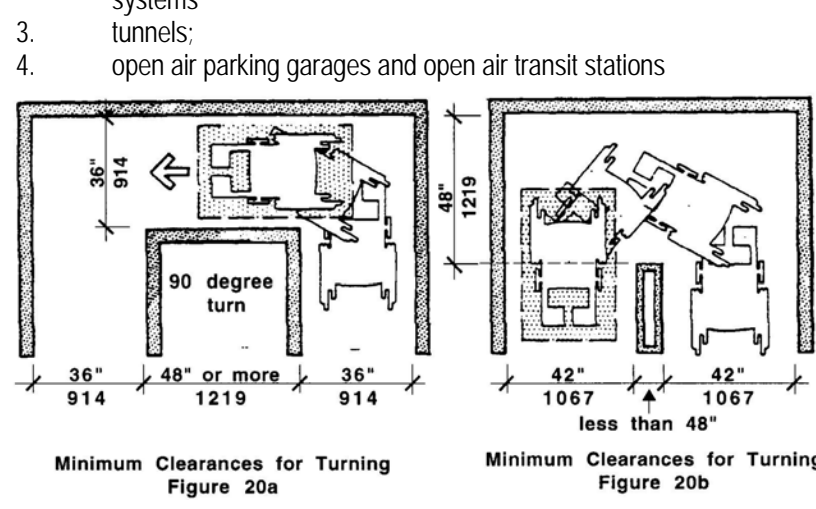


**521 CMR 20.00: ACCESSIBLE ROUTE**  
An accessible route shall provide a continuous unobstructed path connecting accessible spaces and elements inside and outside a facility. Accessible routes may include but are not limited to walks, halls, corridors, aisles, skywalks, and tunnels. Accessible routes may not include stairs, steps, or escalators, even if the stairs and steps are required to be accessible under 521 CMR.

**LOCATION**  
Within the boundary of the site, an accessible route(s) shall be provided from accessible parking, accessible passenger loading zones, and public streets or sidewalks to the accessible building entrance they serve. The accessible route(s) shall coincide with the route for the general public. At least one accessible route shall connect accessible buildings, facilities, elements and spaces that are on the same site.

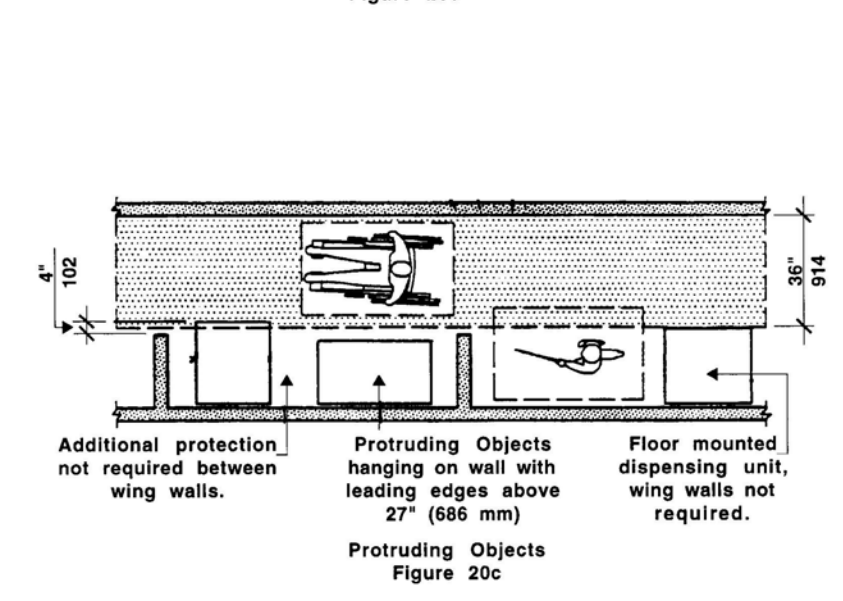
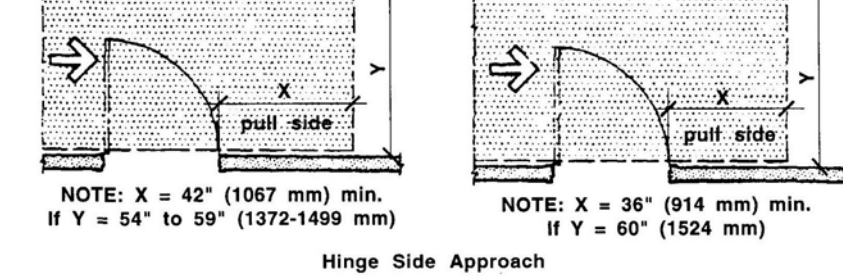
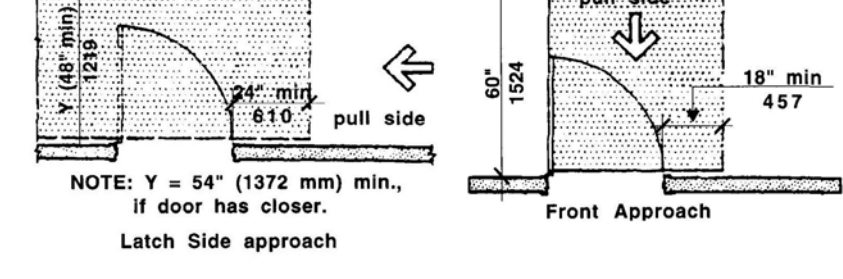
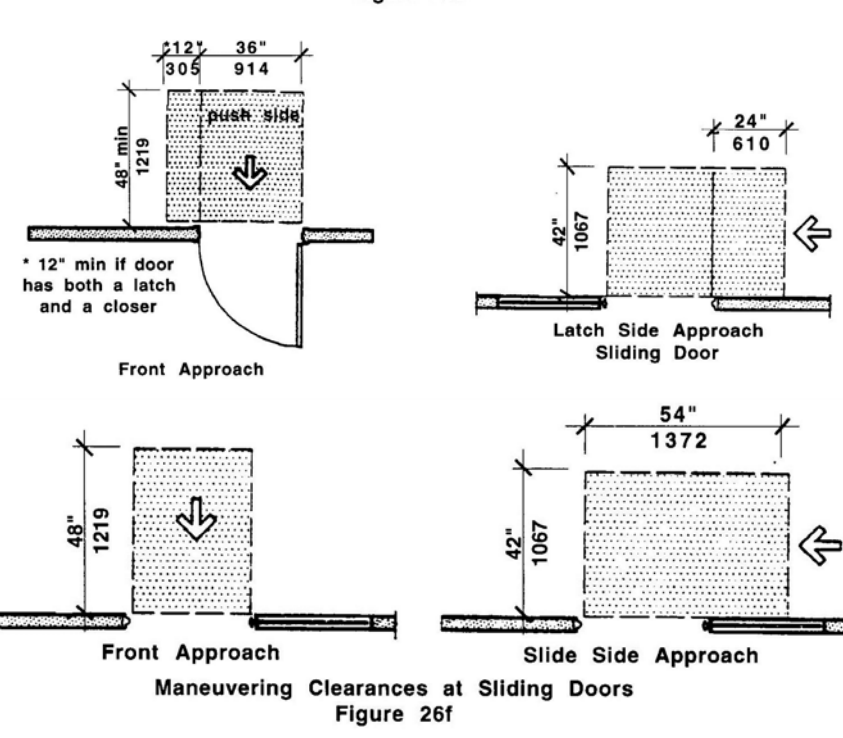
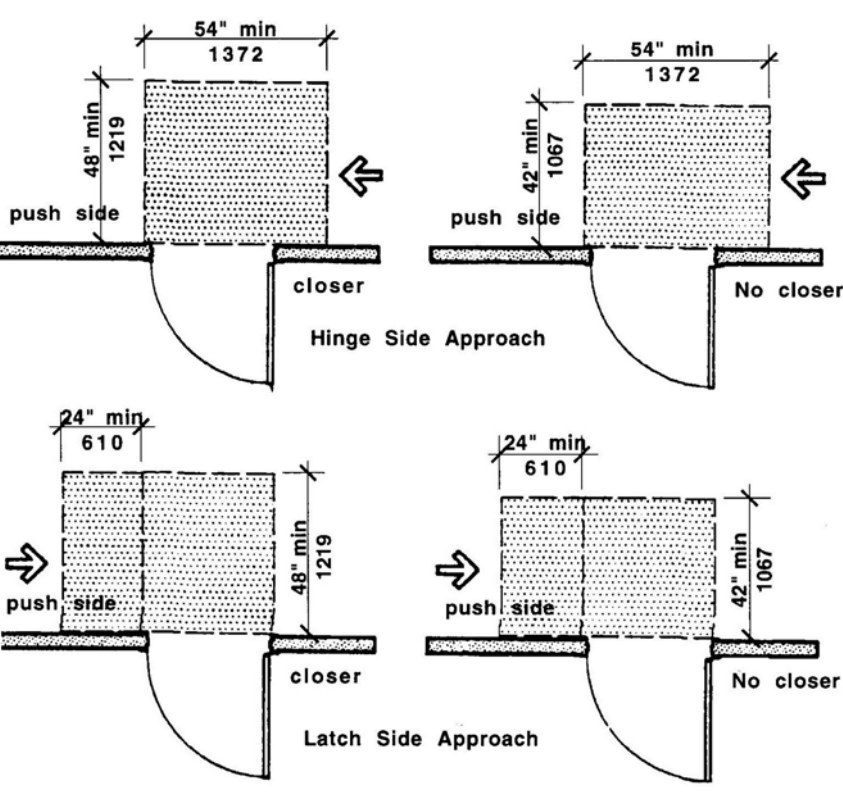
**PASSING SPACE**  
If an accessible route has less than 60 inches (1524mm) clear width, then passing spaces at least 60 inches by 60 inches (1524mm by 1524mm) shall be located at intervals not to exceed 200 feet (200' = 61m). A T - intersection of two corridors or walks is an acceptable passing place.

**AREAS OF RESCUE ASSISTANCE**  
Shall be provided where an accessible means of egress is not provided and shall comply with the following requirements:  
Exception: Areas of rescue assistance are not required in:  
1. existing buildings undergoing alterations, remodeling, reconstruction  
2. buildings or facilities having a supervised automatic sprinkler systems  
3. tunnels;  
4. open air parking garages and open air transit stations

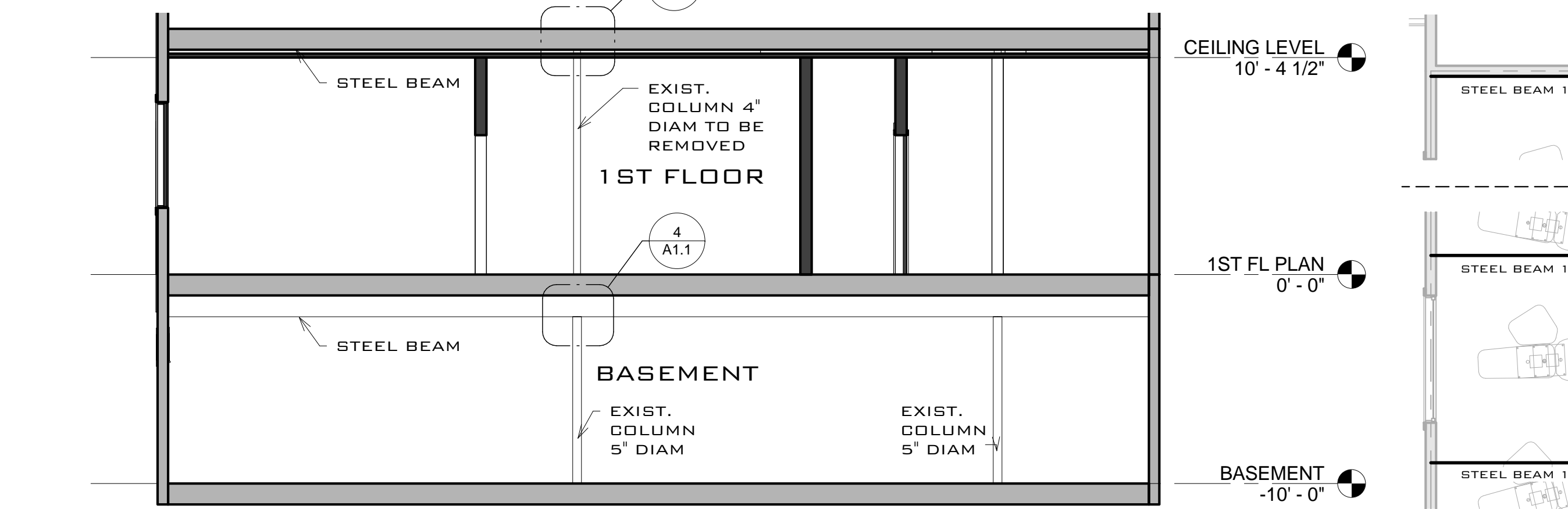
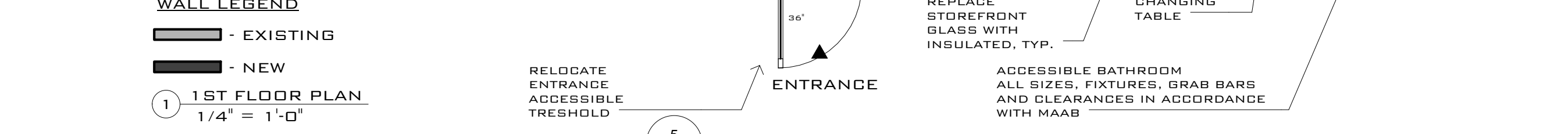
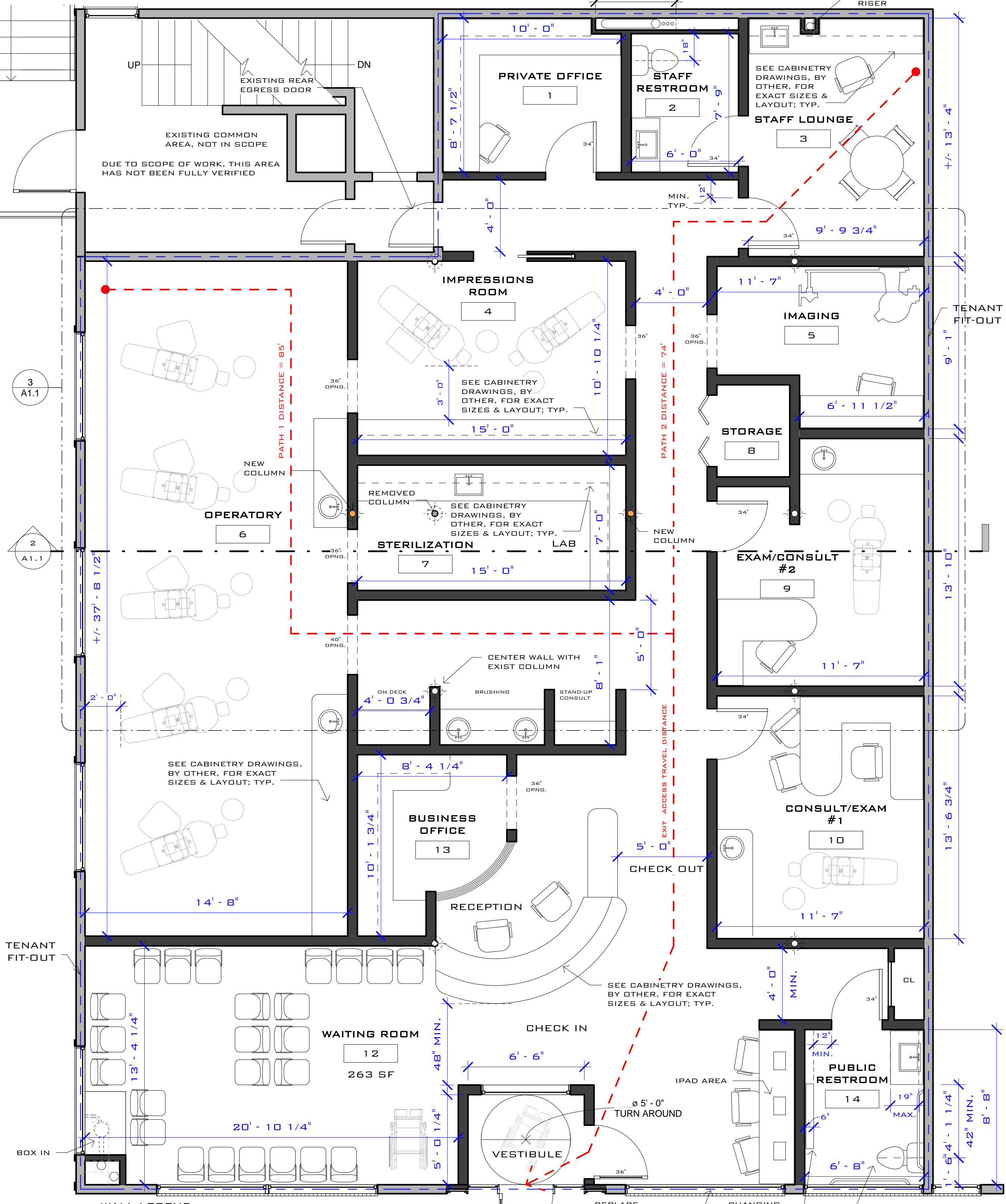
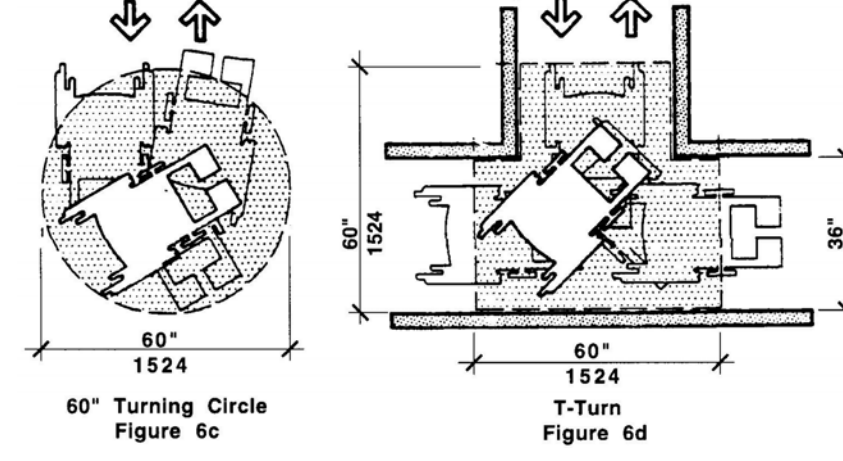
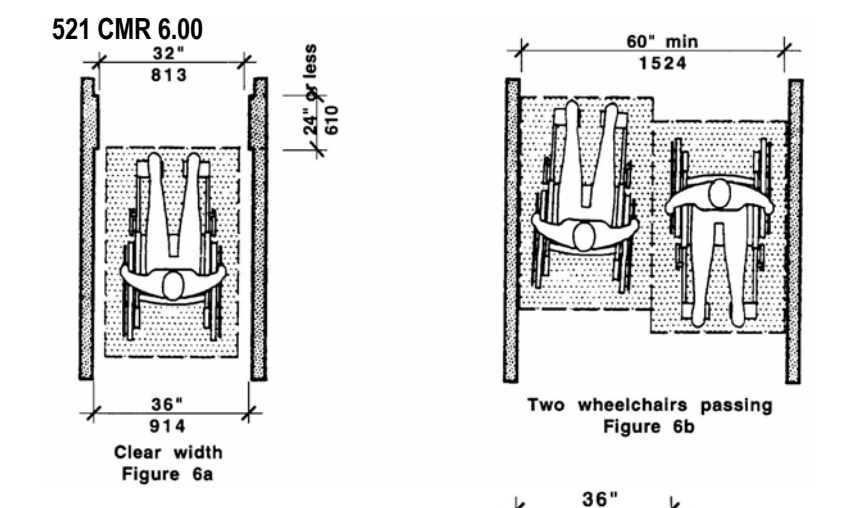


**521 CMR 26.00: DOORS AND DOORWAYS:** Doors and doorways designed to allow passage into and within all accessible units, sleeping rooms, or suites shall comply with this section.

All doorways and openings that are required to be accessible shall have a clear opening of not less than 32 inches (32" = 813mm). Clear opening of a door is measured from the face of the stop on the latch side to the face of the door when the door is open 90 degrees. For door types such as bifold, accordion, and pocket, the clear opening is measured when the door is in its most fully open position.



**SPACE ALLOWANCE & REACH RANGES**



**GENERAL NOTES**

- EXISTING DRAWINGS MAY CONTAIN DISCREPANCIES DUE TO ASSUMED CONDITIONS. THE CONTRACTOR SHALL VERIFY ALL MEASUREMENTS AND CONDITIONS SHOWN ON THE DRAWINGS PRIOR TO COMMENCING WORK, AND SHALL NOTIFY THE ARCHITECT OF ANY DISCREPANCIES IMMEDIATELY.
- ALL WORK AND PROCEDURES SHALL COMPLY WITH APPLICABLE AND CURRENT CODES, REGULATIONS, ORDINANCES, AND REQUIREMENTS OR AUTHORITIES HAVING JURISDICTION, INCLUDING, ACCESSIBILITY GUIDELINES WHERE APPLICABLE. CONFIRM SAME WITH LOCAL BUILDING INSPECTOR.
- THE CONTRACTOR IS RESPONSIBLE FOR ALL MEANS AND METHODS OF TEMPORARY SHORING, BRACING OTHERWISE PROTECTING ANY PORTION OF THE STRUCTURE, SITE AND UTILITIES FROM DAMAGE DURING CONSTRUCTION. THE ARCHITECT IS SPECIFYING THE FINISH CONDITION ONLY, WITHOUT ASSUMING KNOWLEDGE NOR RESPONSIBILITY FOR HOW THE CONTRACTOR WILL ACHIEVE THIS RESULT.
- CONTRACTOR SHALL BUILD EXACTLY WHAT IS SHOWN ON DRAWINGS. ANY DEPARTURES OR SUBSTITUTIONS FROM WHAT IS INDICATED ON THE DRAWINGS SHALL BE PRESENTED TO THE ARCHITECT FOR REVIEW AND APPROVAL PRIOR TO CONSTRUCTION. ANY UNAUTHORIZED CHANGES TO THE APPROVED STAMPED DRAWINGS SHALL BE REMOVED AND REPLACED AT THE CONTRACTOR'S EXPENSE.
- ALL DIMENSIONS ARE TO FACE OF FINISH UNLESS NOTED OTHERWISE.
- ALL WINDOWS TO BE REPLACED UNLESS OTHERWISE NOTED.
- ALL DOORS ARE NEW UNLESS OTHERWISE NOTED. ALL CASED OPENINGS TO MATCH HEIGHT OF DOORS.
- ALL BUILT-INS, SINKS, PLUMBING FIXTURES AND EQUIPMENT SHALL BE FURNISHED BY OWNER AND INSTALLED BY CONTRACTOR.
- ALL FLOOR SURFACES TO BE LAMINATE FLOORING UNLESS OTHERWISE NOTED.
- ALL WALL FINISH TO BE SHEETROCK AND PAINTED.
- MAXIMIZE HEIGHT OF DROP CEILING IN ALL LOCATIONS.

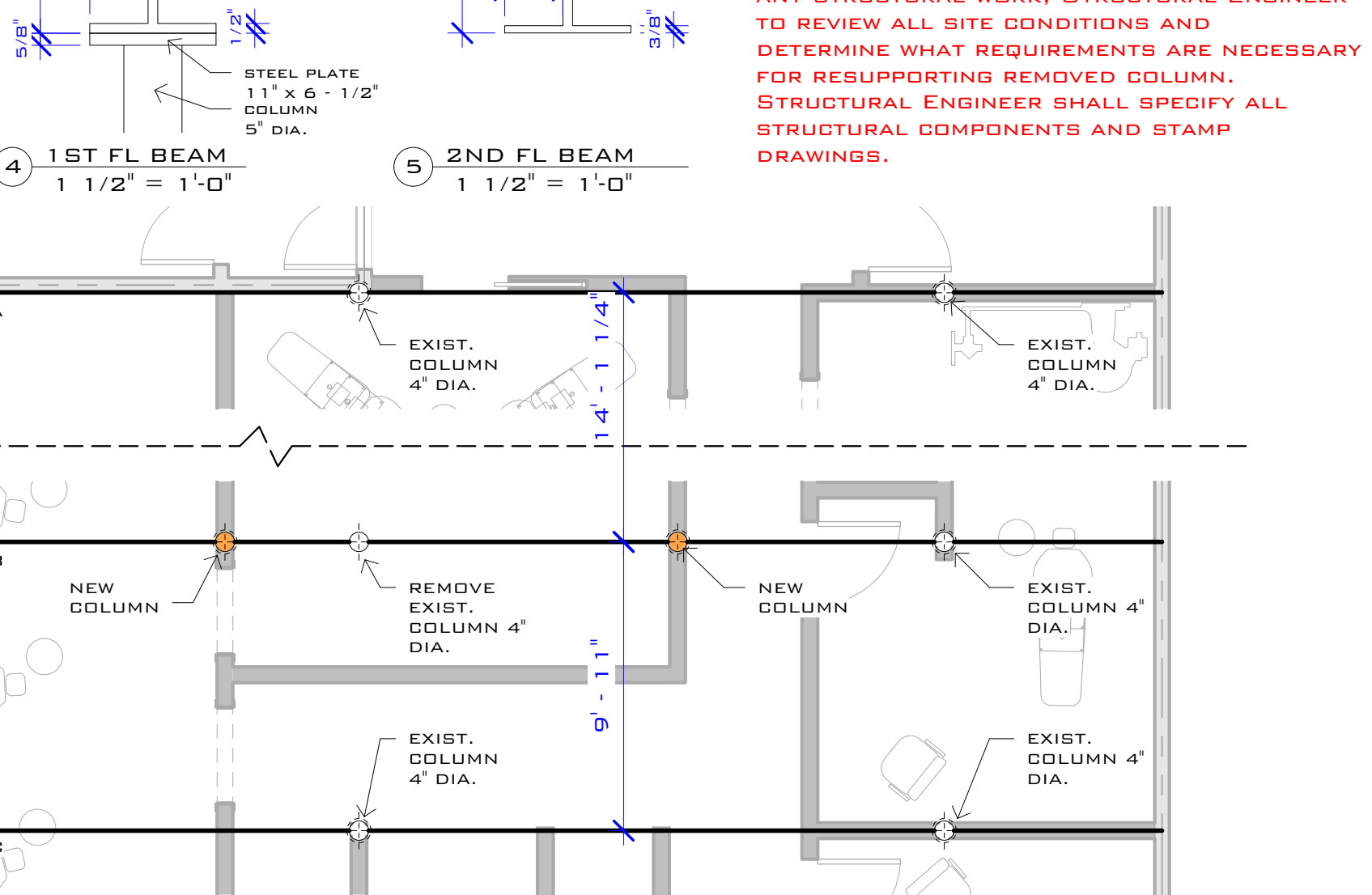
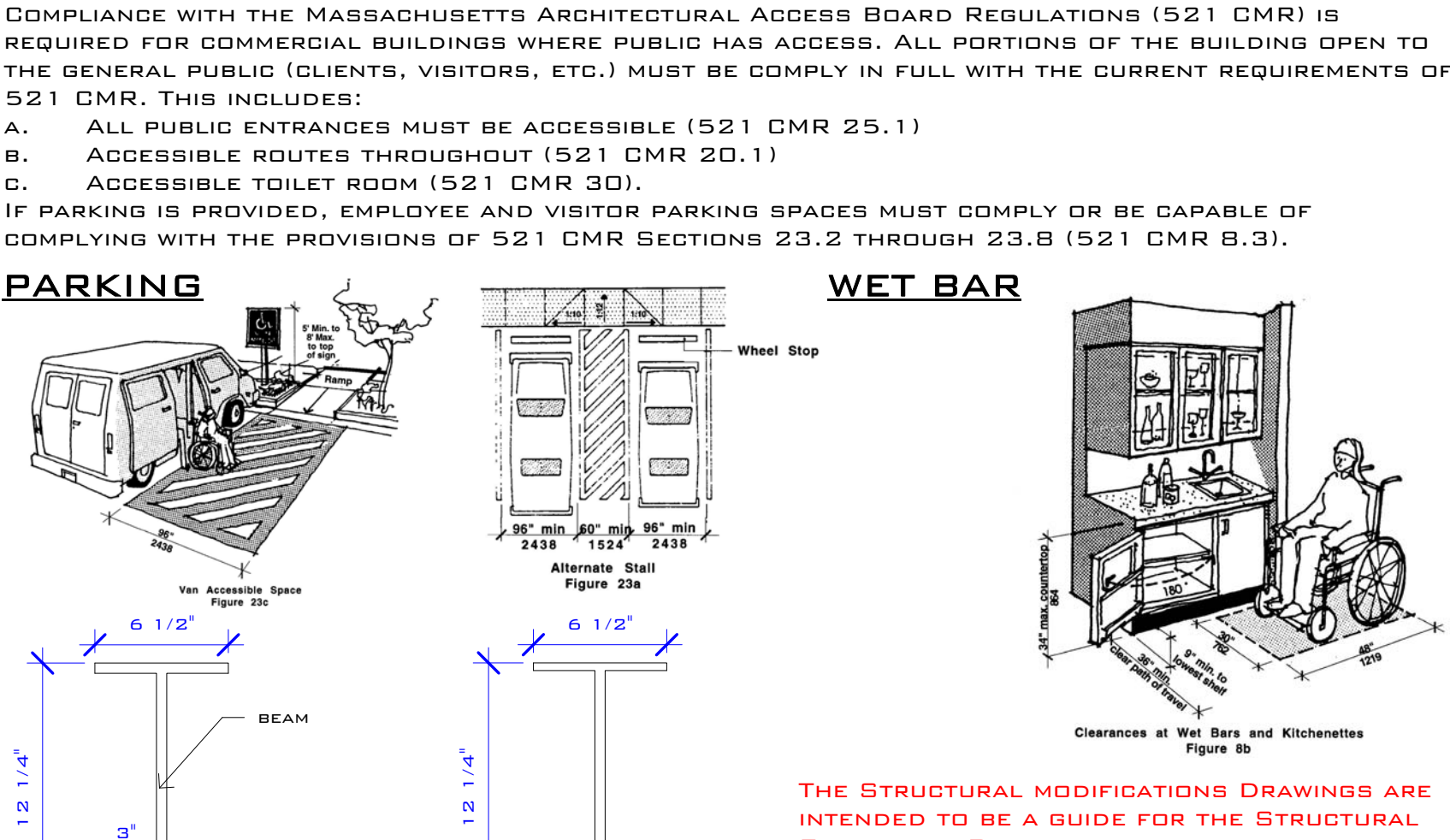
International Codes (I-Codes)	Massachusetts Regulations
IBC - International Building Code 2009	780 CMR - MA Amendments to the IBC
IFBC - International Existing Building Code 2009	521 CMR - MA fire prevention and electrical regulations
IEC - International Energy Conservation Code 2002	521 CMR - MA accessibility regulations
IMC - International Mechanical Code 2009	248 CMR - MA plumbing regulations
IPC - International Fire Code 2009	224 CMR - MA elevator regulations

**IEBC COMPLIANCE METHODS: WORK AREA METHOD**  
**Use Group & Occupancy Classification:**  
A B (Office - Orthodontic)  
**CONSTRUCTION TYPE:**  
THE CONSTRUCTION TYPE IS WOOD CONSTRUCTION WHICH RESULTS IN TYPE VB CONSTRUCTION (COMBUSTIBLE, NON-RATED)  
**FIRE PROTECTION SYSTEM:**  
EXISTING BUILDING IS SPRINKLERED. HEADS TO BE RELOCATED PER NEW LAYOUT. DESIGN/BUILD BY OTHER.  
**FIRE RESISTANCE RATINGS:**  
FOR TYPE VB CONSTRUCTION - SPRINKLERED MAINTAIN 5/8" FIRE RATED GYPSUM "X" SEPARATION TO ASSEMBLY OCCUPANCY (RESTAURANT, ADJACENT)  
**MEANS OF EGRESS:**  
**OCCUPANT LOAD:**  
THE FUNCTION OF EACH SPACE DETERMINES THE CALCULATION FOR HOW MANY OCCUPANTS ARE ALLOWED PER THAT SQUARE FOOTAGE, IN ACCORDANCE WITH TABLE 780 CMR 1009.

Function of Space	FL area per occupant	Total SF for function	Occupants
Waiting Area	15	263	17.53
Business & Outpatient areas	100	2521	25.21
Subtotal Tenant Occupants			42.74

**34" DOOR / 2 = 170 OCCUPANTS (DOOR CAPACITY)**  
**DOORS:** (780 CMR 100B)  
THE MINIMUM WIDTH OF EACH DOOR OPENING SHALL BE SUFFICIENT FOR THE OCCUPANT LOAD THEREOF AND SHALL PROVIDE A CLEAR WIDTH OF 32 INCHES. DOORS SHALL SWING IN THE DIRECTION OF EGRESS TRAVEL WHERE SERVING AN OCCUPANT LOAD OF 50.  
**EXIT ACCESS TRAVEL DISTANCE:** (780 CMR 1016.1)  
250 FEET (SPRINKLERED); AS PER TABLE  
**COMMON PATH OF TRAVEL:** (780 CMR 1014.3)  
100 FT  
**MIN. CORRIDOR WIDTH:** (780 CMR 1018.2)  
36" WITH OCCUPANT LOAD UNDER 50" (EXCEPTION #2)

**ADMISSIBILITY:**  
COMPLIANCE WITH THE MASSACHUSETTS ARCHITECTURAL ACCESS BOARD REGULATIONS (521 CMR) IS REQUIRED FOR COMMERCIAL BUILDINGS WHERE PUBLIC HAS ACCESS. ALL PORTIONS OF THE BUILDING OPEN TO THE GENERAL PUBLIC (CLIENTS, VISITORS, ETC.) MUST BE COMPLY IN FULL WITH THE CURRENT REQUIREMENTS OF 521 CMR. THIS INCLUDES:  
A. ALL PUBLIC ENTRANCES MUST BE ACCESSIBLE (521 CMR 25.1)  
B. ACCESSIBLE ROUTES THROUGHOUT (521 CMR 20.1)  
C. ACCESSIBLE TOILET ROOM (521 CMR 30).  
IF PARKING IS PROVIDED, EMPLOYEE AND VISITOR PARKING SPACES MUST COMPLY OR BE CAPABLE OF COMPLYING WITH THE PROVISIONS OF 521 CMR SECTIONS 23.2 THROUGH 23.8 (521 CMR 8.3).



**REVISIONS**

NO.	DATE	DESCRIPTION
1	4-21-2015	PERMIT FLOOR PLAN - STAMPED
2	4-28-2015	EXT. ELEVATIONS & REVISED FL PLAN
3	5-11-2015	FLOOR PLAN MODIFICATIONS

Copyright 2015, INNOVATIVE COLLABORATIONS, INC. THE DESIGN CONCEPTS, DETAILS, AND SPECIFICATIONS ARE INSTRUMENTS OF SERVICE AND ARE THE PROPERTY OF INNOVATIVE COLLABORATIONS, INC. THEY ARE NOT TO BE REPRODUCED, COPIED, REPRINTED, OR USED WITHOUT WRITTEN CONSENT.

**REGISTERED ARCHITECT**  
STATE OF MASSACHUSETTS  
ELECTRONIC STAMP

**INNOVATIVE COLLABORATIONS, INC**  
AWARD WINNING ARCHITECTURE & DESIGN  
369 CONGRESS STREET  
BOSTON MA 02210  
FX: 866-828-9943  
PH: 617-695-3777  
[WWW.INNOVATIVE-C.COM](http://WWW.INNOVATIVE-C.COM)

**ARCH. ORTHODONTIC**  
745 HIGH STREET  
WESTWOOD MA,  
02090

**1ST FLOOR PLAN**

DATE: 5-11-2015  
DRAWN BY: FA  
CHECKED BY: MS  
SCALE: AS INDICATED

PROJECT # 2015-25

**A1.1**

6/10/2015 12:16:20 PM

REVISIONS	
EXT. ELEVATIONS & REVISED FL PLAN	4-28-2015

Copyright 2015, INNOVATIVE COLLABORATIONS, INC. THE DESIGN CONCEPTS, DETAILS, AND SPECIFICATIONS ARE INSTRUMENTS OF SERVICE AND ARE THE PROPERTY OF INNOVATIVE COLLABORATIONS, INC. THEY MAY NOT BE REPRODUCED, COPIED, REPRODUCED, OR USED WITHOUT PRIOR WRITTEN CONSENT.



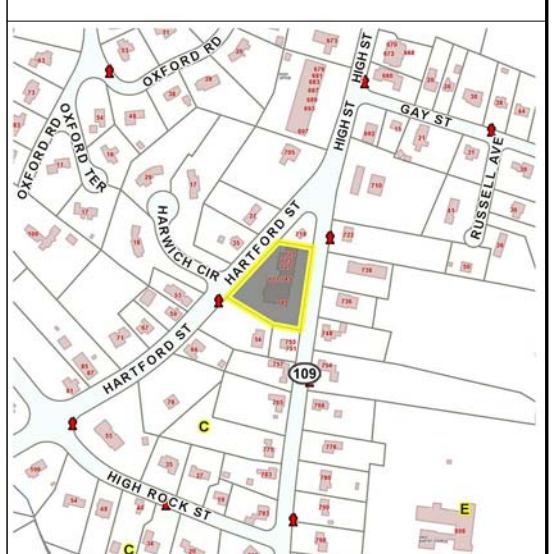
**GENERAL ELEVATION NOTES**

1. SEE GENERAL NOTES ON A1.1 AND COORDINATE WITH ALL OTHER DOCUMENTS OF SERVICE.
2. REPLACE STORE FRONT GLASS WITH INSULATED/ALUMINUM FRAME. COLOR TO MATCH ADJACENT TENANT TYP.
3. ALUMINUM & GLASS ENTRY DOOR SYSTEM TO FIT IN EXISTING OPNG. WIDTH. CUT BELOW AS NECESSARY FOR DOOR.



**INNOVATIVE COLLABORATIONS, INC**  
 AWARD WINNING ARCHITECTURE & DESIGN  
 369 CONGRESS STREET  
 BOSTON MA 02210  
 FX: 866-828-9943  
 PH: 617-695-3777  
 WWW.INNOVATIVE-C.COM

**ARCH. ORTHODONTIC**  
 745 HIGH STREET  
 WESTWOOD MA, 02090



**BUILDING EXTERIOR ELEVATIONS**  
 DATE: 5-11-2015  
 DRAWN BY: FA  
 CHECKED BY: MS  
 SCALE: AS INDICATED

PROJECT # 2015-25

**A1.2**

6/10/2015 12:16:26 PM

NOTE: SHADOWS ARE USED FOR EFFECT AND FOR ISOLATION DEPTH. SHADOWS ARE NOT INTENDED TO SHOW ACTUAL LOCATION OF SUN, UNLESS OTHERWISE NOTED.