

PHOTOMETRIC LIGHTING PLAN
301-323 WASHINGTON STREET
WESTWOOD, MASSACHUSETTS

SCALE: 1" = 20' JULY 10, 2015

Norwood Engineering

Norwood Engineering Company, Inc.
 Consulting Engineers, Land Surveyors
 1410 ROUTE ONE, NORWOOD, MA 02062
 TEL (781)762-0143 FAX (781)762-8595

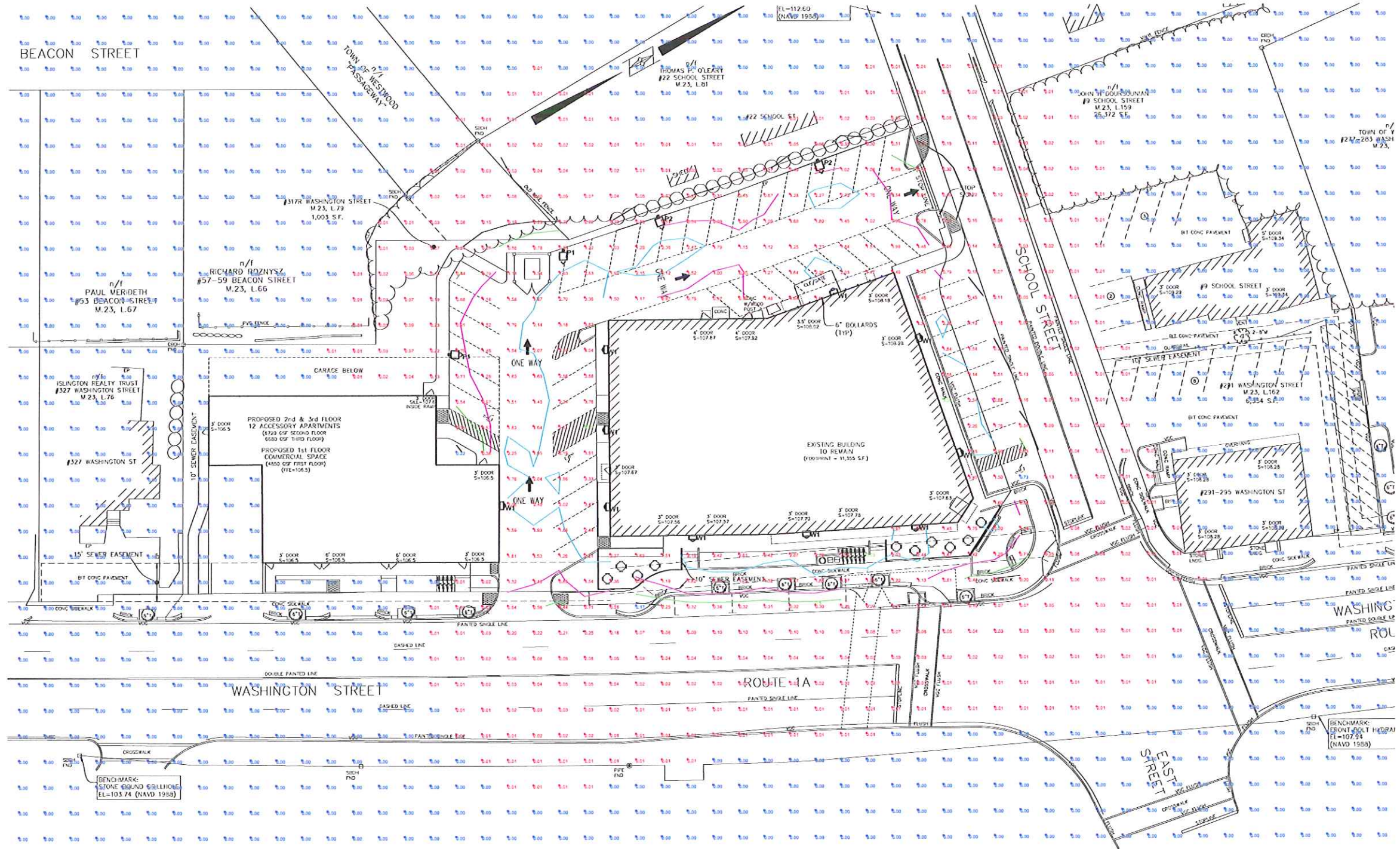


DATE	REVISIONS
10/16/15	ELIMINATE WASH. ST. PARKING
3/8/16	RELOCATED LIGHT POLE NEAR DUMPSTER



LUMINAIRE SCHEDULE						
Symbol	Label	Qty	Catalog Number	Description	Lamp	Lumens LLF Watts
⊕	P1	2	PHILIPS: P21-3-55LA-NW-EHSS	TYPE II LED AREA LIGHT WITH HSS. POLE MOUNTED AT 22'-0"	(1) LIGHT ARRAY OF 48 LEDs DRIVEN AT 350mA	Azackta 1.00 52
⊕	P2	2	PHILIPS: P21-2-55LA-NW-EHSS	TYPE II LED AREA LIGHT WITH HSS. POLE MOUNTED AT 22'-0"	(1) LIGHT ARRAY OF 48 LEDs DRIVEN AT 350mA	Azackta 1.00 52
⊞	W1	10	LITHONIA: CSXW LED 15083504PK SR2	TYPE II LED WALL PACK	38.3W LED	Azackta 1.00 38.3
□	S1	0	LITHONIA: VINC LED 150K	LED CANOPY/VEHICLE LIGHTING LUMINAIRE	41W LED	Azackta 1.00 41

STATISTICS						
Description	Symbol	Avg	Max	Min	Max/Min	Avg/Min
1- MAIN PARKING	⊕	1.59 fc	4.39 fc	0.22 fc	20.0:1	7.2:1
2- SCHOOL STREET PARKING	⊕	1.73 fc	3.08 fc	0.73 fc	4.2:1	2.4:1
3- WASHINGTON STREET PARKING	⊕	1.38 fc	3.03 fc	0.17 fc	17.8:1	8.0:1
4- OVERFLOW	⊗	0.01 fc	1.00 fc	0.00 fc	N/A	N/A



SITE PHOTOMETRIC PLAN
 SCALE: 1" = 20'-0"

**LIGHTING PLAN
FIXTURE SPECIFICATIONS**
301-323 WASHINGTON STREET
WESTWOOD, MASSACHUSETTS

SCALE: NOT TO SCALE JULY 10, 2015

**Norwood
Engineering**

Norwood Engineering Company, Inc.
Consulting Engineers, Land Surveyors
1410 ROUTE ONE, NORWOOD, MA 02062
TEL (781)762-0143 FAX (781)762-8595



DATE	REVISIONS
10/16/15	ELIMINATE WASH. ST. PARKING



PHILIPS GARDCO

Site & Area

PureForm

2" luminaire housing

Philips Gardco PureForm luminaire combines LED performance excellence and advanced LED thermal management technology with a distinct purity of style to provide outdoor area lighting that is both energy efficient and aesthetically pleasing. PureForm is defined by its high performance, sleek low profile design and rugged construction.

Ordering guide

Profile	Control	Arm	Mounting	Optical*	LED Module	Color Temp.	Voltage	Finish	Options
P21	Standard	Standard	Standard	Standard	300mA	CH	120	SLP	TL - 1/2" dia. hole and 3/16" dia. hole
P21	Standard	Standard	Standard	Standard	300mA	CH	120	SLP	TL - 1/2" dia. hole and 3/16" dia. hole
P21	Standard	Standard	Standard	Standard	300mA	CH	120	SLP	TL - 1/2" dia. hole and 3/16" dia. hole

Accessories

- CSW-1000: 1000mA LED module
- CSW-2000: 2000mA LED module
- CSW-3000: 3000mA LED module
- CSW-4000: 4000mA LED module
- CSW-5000: 5000mA LED module
- CSW-6000: 6000mA LED module
- CSW-7000: 7000mA LED module
- CSW-8000: 8000mA LED module
- CSW-9000: 9000mA LED module
- CSW-10000: 10000mA LED module

CSXW LED LED Wall Luminaire

Specifications

- Height: 2.75" (70mm)
- Width: 16.5" (419mm)
- Depth: 9.5" (241mm)
- Weight: 30 lbs (13.6kg)

Introduction

The Contour® Series luminaires offer traditional square daylamps with softened edges for a versatile look that complements many applications. The CSXW LED combines the latest in LED technology with the familiar aesthetic of the Contour® Series for stylish, high performance illumination that lasts. It is ideal for replacing 100-400W metal halide in wall-mounted applications with typical energy savings of 80% and expected service life of over 100,000 hours.

Ordering Information

EXAMPLE: CSXW LED 30C 700 40K T3M MVOLT DDXX

Series	LED	Color Temp.	Beam Angle	Mounting	Options
CSXW LED	30C	700	40K	T3M	MVOLT DDXX

Mounting Detail

Accessories

- CSW-1000: 1000mA LED module
- CSW-2000: 2000mA LED module
- CSW-3000: 3000mA LED module
- CSW-4000: 4000mA LED module
- CSW-5000: 5000mA LED module
- CSW-6000: 6000mA LED module
- CSW-7000: 7000mA LED module
- CSW-8000: 8000mA LED module
- CSW-9000: 9000mA LED module
- CSW-10000: 10000mA LED module

VRC LED LED Canopy/Ceiling Luminaire

Specifications

- Width: 12.5" (318mm)
- Height: 8.5" (216mm)
- Depth: 12.5" (318mm)
- Weight: 7.5 lbs (3.4kg)

Introduction

The popular VRC luminaire is now available with long lasting, energy efficient LED technology. Featuring a classic daylamp, the VRC LED offers a traditional appearance and is powered by advanced LEDs. The VRC LED luminaire is powerful yet energy efficient, capable of replacing up to a 250W metal halide luminaire while saving up to 86% in energy costs. Offering an expected service life of more than 20 years, the VRC LED eliminates frequent lamp and ballast replacements associated with traditional technologies.

Ordering Information

EXAMPLE: VRC LED 1 50K MVOLT

Series	LED	Color Temp.	Mounting	Options
VRC LED	1	50K	MVOLT	DDXX

Accessories

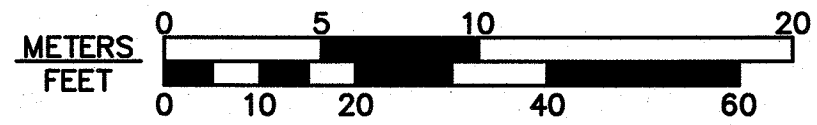
- CSW-1000: 1000mA LED module
- CSW-2000: 2000mA LED module
- CSW-3000: 3000mA LED module
- CSW-4000: 4000mA LED module
- CSW-5000: 5000mA LED module
- CSW-6000: 6000mA LED module
- CSW-7000: 7000mA LED module
- CSW-8000: 8000mA LED module
- CSW-9000: 9000mA LED module
- CSW-10000: 10000mA LED module

**SITE PLAN
EROSION CONTROL PLAN
301-323 WASHINGTON STREET
WESTWOOD, MASSACHUSETTS**

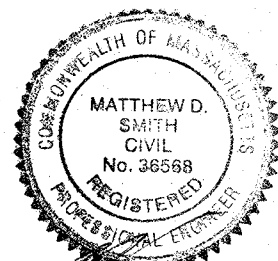
SCALE: 1" = 20' NOVEMBER 5, 2015

**Norwood
Engineering**

Norwood Engineering Company, Inc.
Consulting Engineers, Land Surveyors
1410 ROUTE ONE, NORWOOD, MA 02062
TEL. (781)762-0143 FAX (781)762-8595



DATE	REVISIONS
11/2/2015	STORMWATER MANAGEMENT AREA
1/29/2016	REVISE LAYOUT
2/22/2016	TOWN/BETA COMMENTS
3/8/2016	TOWN/BETA COMMENTS FROM 3/4/16 MEETING



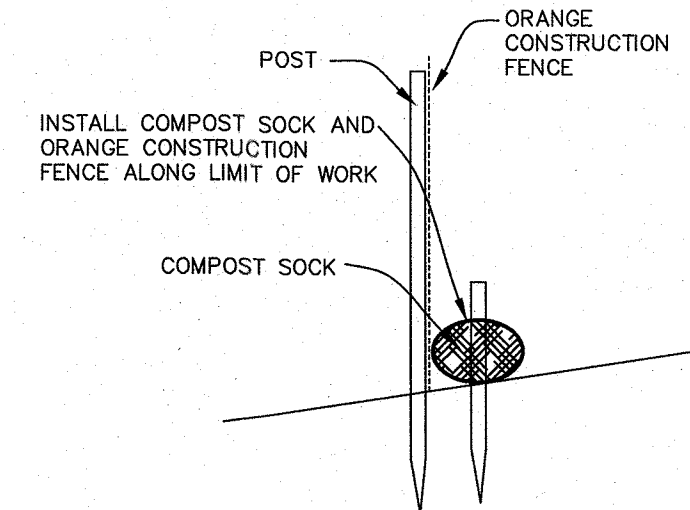
ZONING CLASSIFICATION:
LOCAL BUSINESS "B"
FLEXIBLE MULTIPLE USE OVERLAY
DISTRICT 6 (FMUOD6)

OWNERS:
PETRUZZIELLO PROPERTIES, LLC
c/o GIORGIO PETRUZZIELLO
21 EASTBROOK ROAD
DEDHAM, MA 02026
(301-317 WASHINGTON STREET)

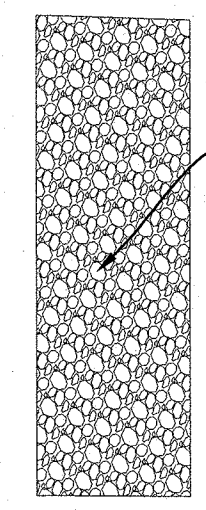
MICHAEL MATTHEW, LLC
c/o KEVIN F. GILLIS
27 ALGONQUIN ROAD
CANTON, MA 02021

APPLICANT:
PETRUZZIELLO PROPERTIES, LLC
c/o GIORGIO PETRUZZIELLO
21 EASTBROOK ROAD
DEDHAM, MA 02026

NOTE:
ALL CATCH BASINS ON SITE SHALL BE SURROUNDED BY A DOUBLE ROW OF WATTLES AND SHALL HAVE SILT SACKS UNDER THE GRATES WITH THE GRATES RAISED AT LEAST 3 INCHES ABOVE THE SURROUNDING GROUND TO PREVENT SEDIMENTS FROM ENTERING THE SYSTEM, WHILE PERMITTING STORMWATER TO FLOW INTO THE SYSTEM AFTER DEPOSITION OF SOLIDS AROUND THE BASIN. THE RAISED INLETS SHALL BE SURROUNDED BY AT LEAST A 4 INCH THICK LAYER OF CRUSHED STONE WHICH SHALL BE INSPECTED PERIODICALLY AND REPLACED IF NECESSARY.

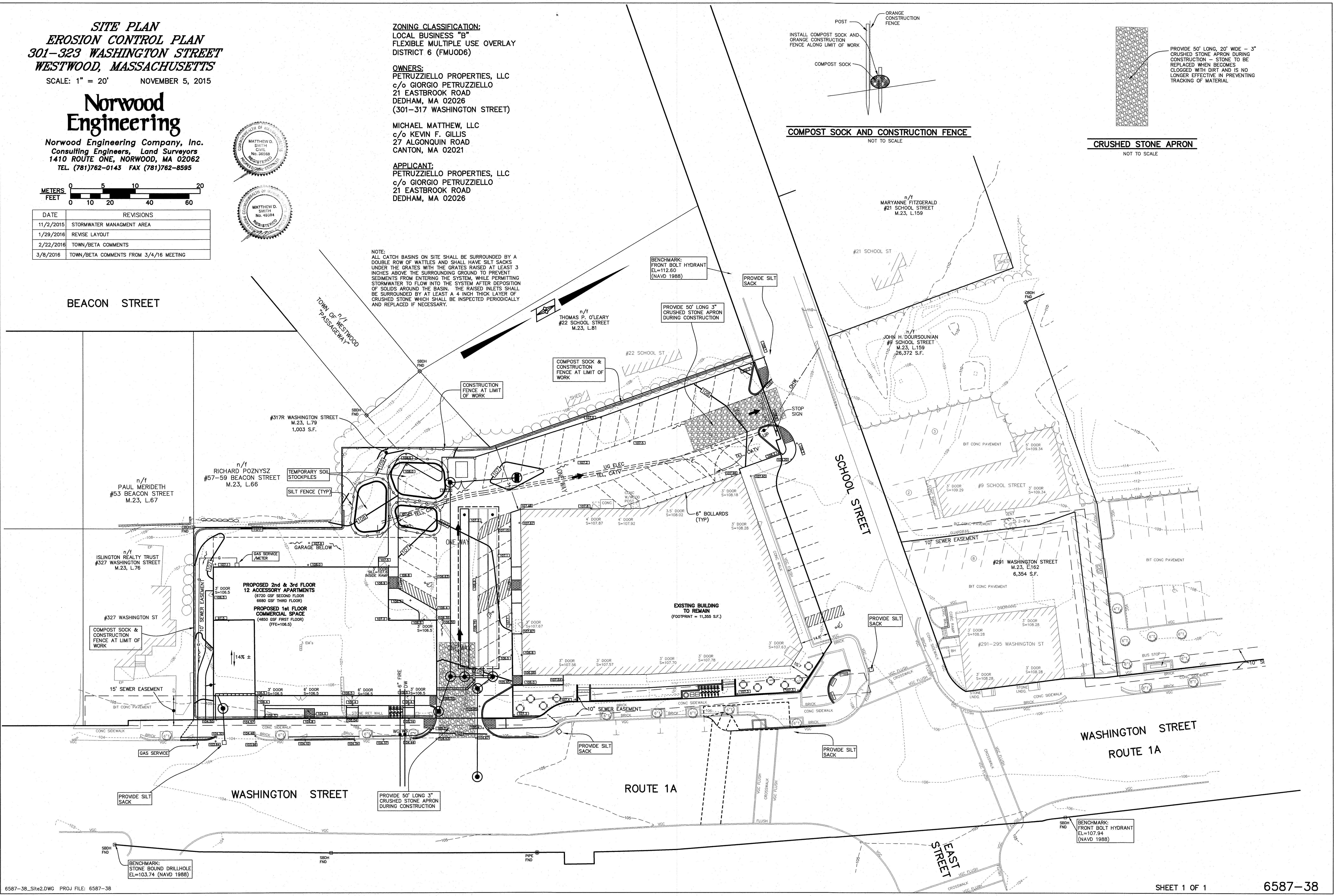


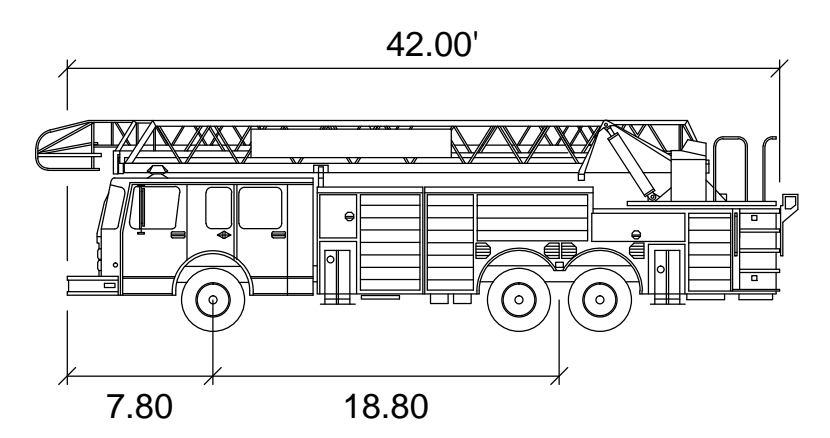
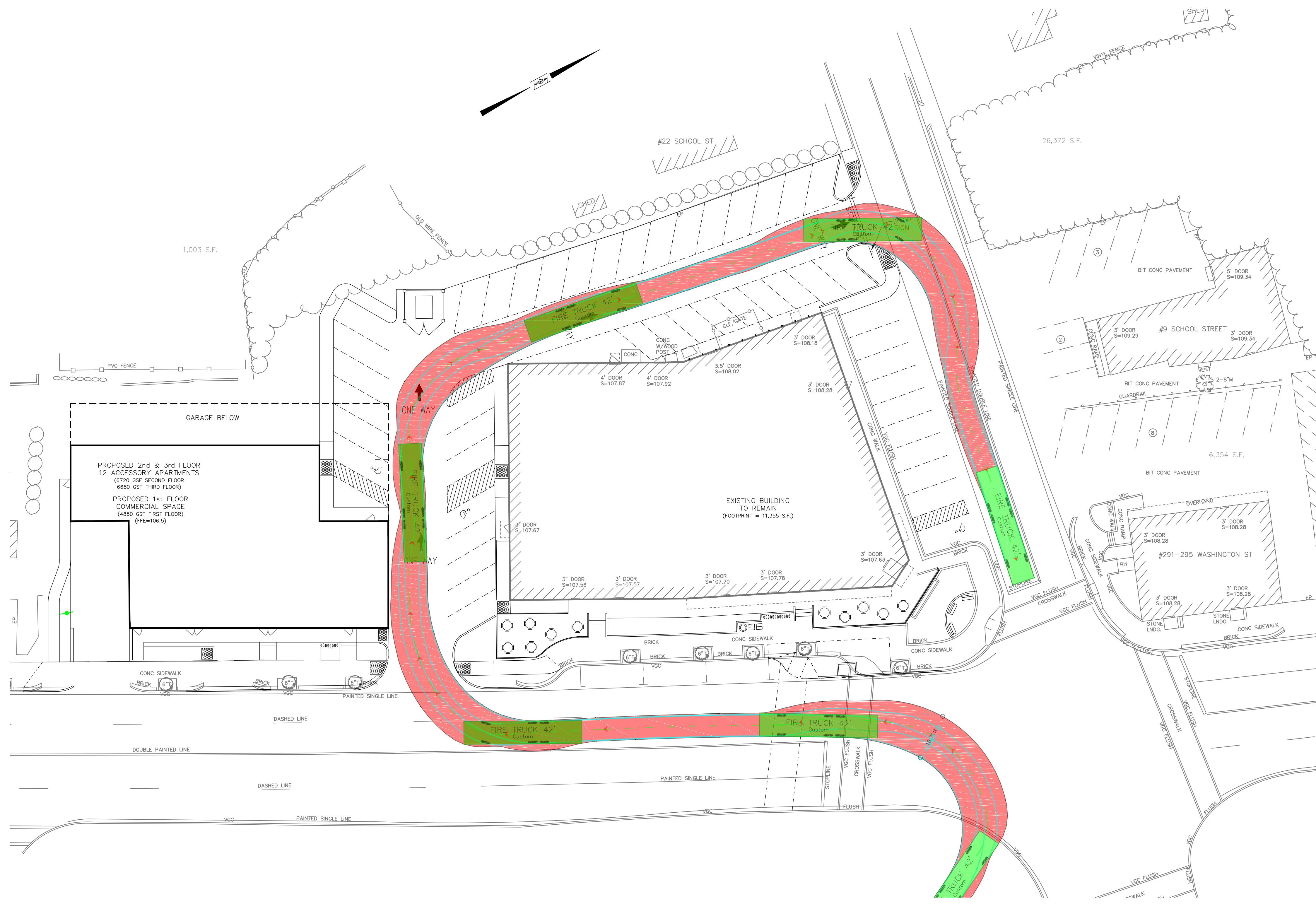
COMPOST SOCK AND CONSTRUCTION FENCE
NOT TO SCALE



CRUSHED STONE APRON
NOT TO SCALE

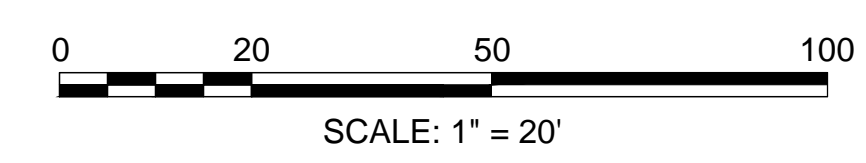
PROVIDE 50' LONG, 20' WIDE - 3" CRUSHED STONE APRON DURING CONSTRUCTION - STONE TO BE REPLACED WHEN BECOMES CLOGGED WITH DIRT AND IS NO LONGER EFFECTIVE IN PREVENTING TRACKING OF MATERIAL.





42' FIRE TURCK	feet
Width	: 10.00
Track	: 7.61
Lock to Lock Time	: 6.0
Steering Angle	: 36.0

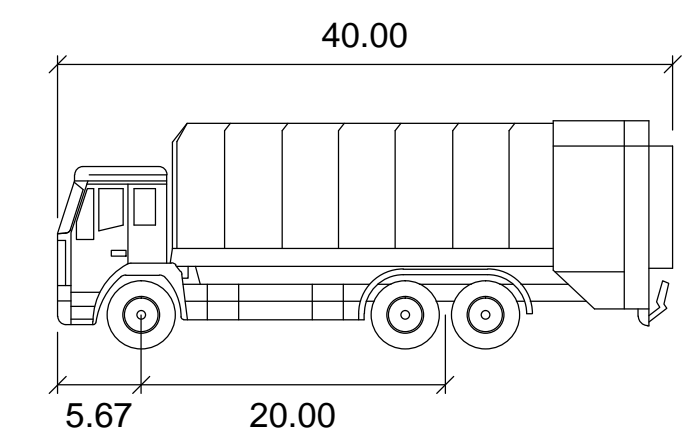
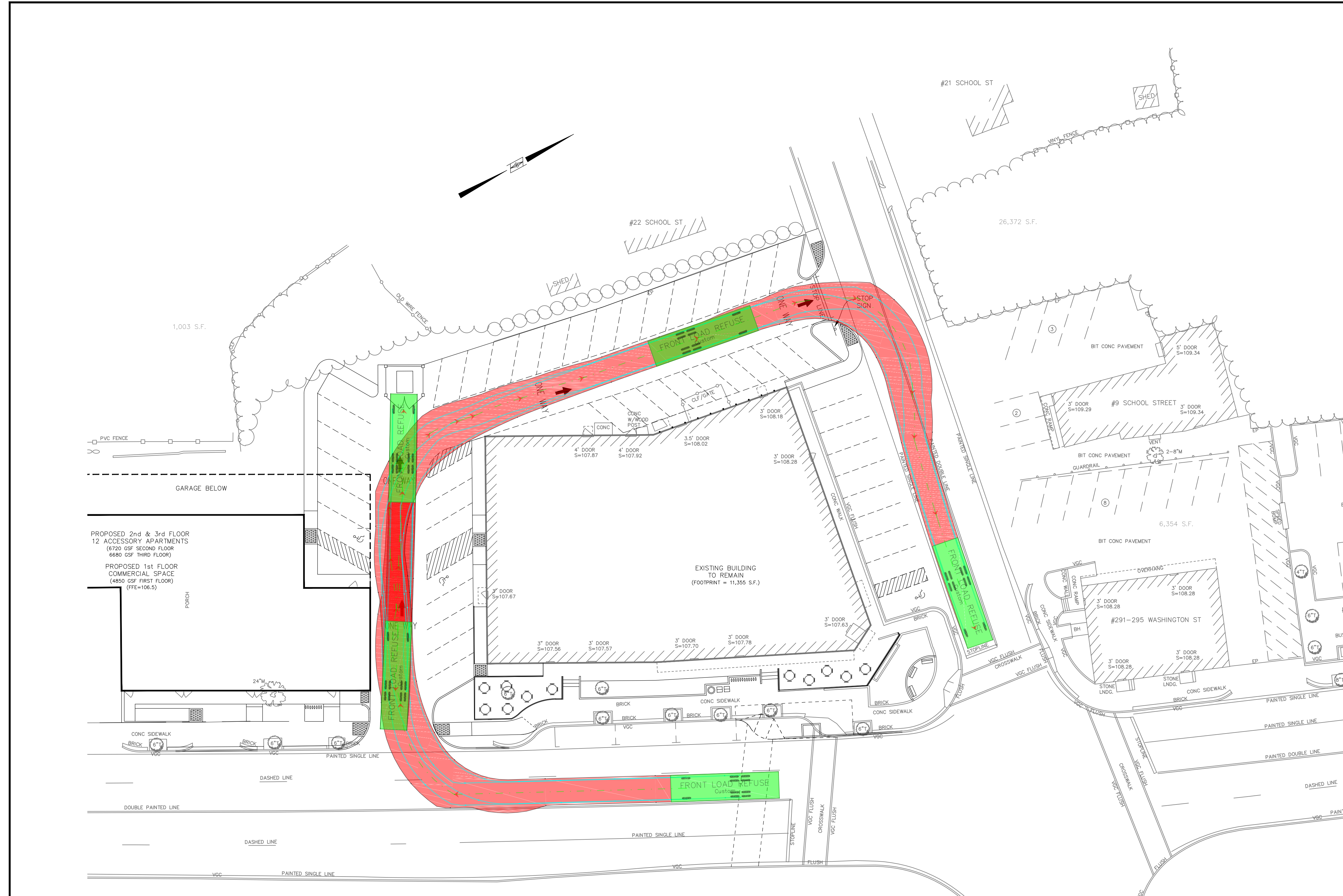
- NOTE:
- FOR SITE DETAILS REFER TO SITE PLAN PREPARED BY NORWOOD ENGINEERING, INC.



NO.	REVISIONS	DATE

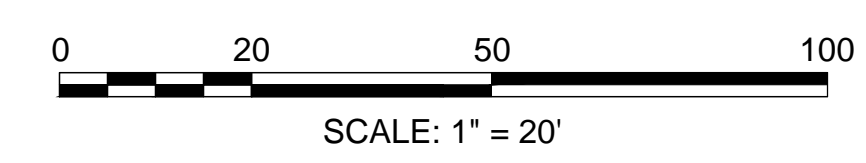
FIRE TRUCK AUTOTURN			
PROJECT TITLE: 301-323 WASHINGTON STREET WESTWOOD, MASSACHUSETTS			
PROFONENT: PETRUZZIELLO PROPERTIES DEDHAM, MA		BAYSIDE ENGINEERING	
DESIGNED BY: BFS		DATE: 3-22-2016	
CHECKED BY:		DATE:	
DRAFTED BY: KPC		DATE: 3-22-2016	
SHEET: 1		OF: 1	

600 Unicorn Park Drive ▲ Woburn, MA 01801
Phone: 781.932.3201 ▲ Fax: 781.932.3413
www.baysideengineering.com



FRONT LOAD REFUSE		feet
Width	:	9.83
Track	:	8.17
Lock to Lock Time	:	4.0
Steering Angle	:	33.9

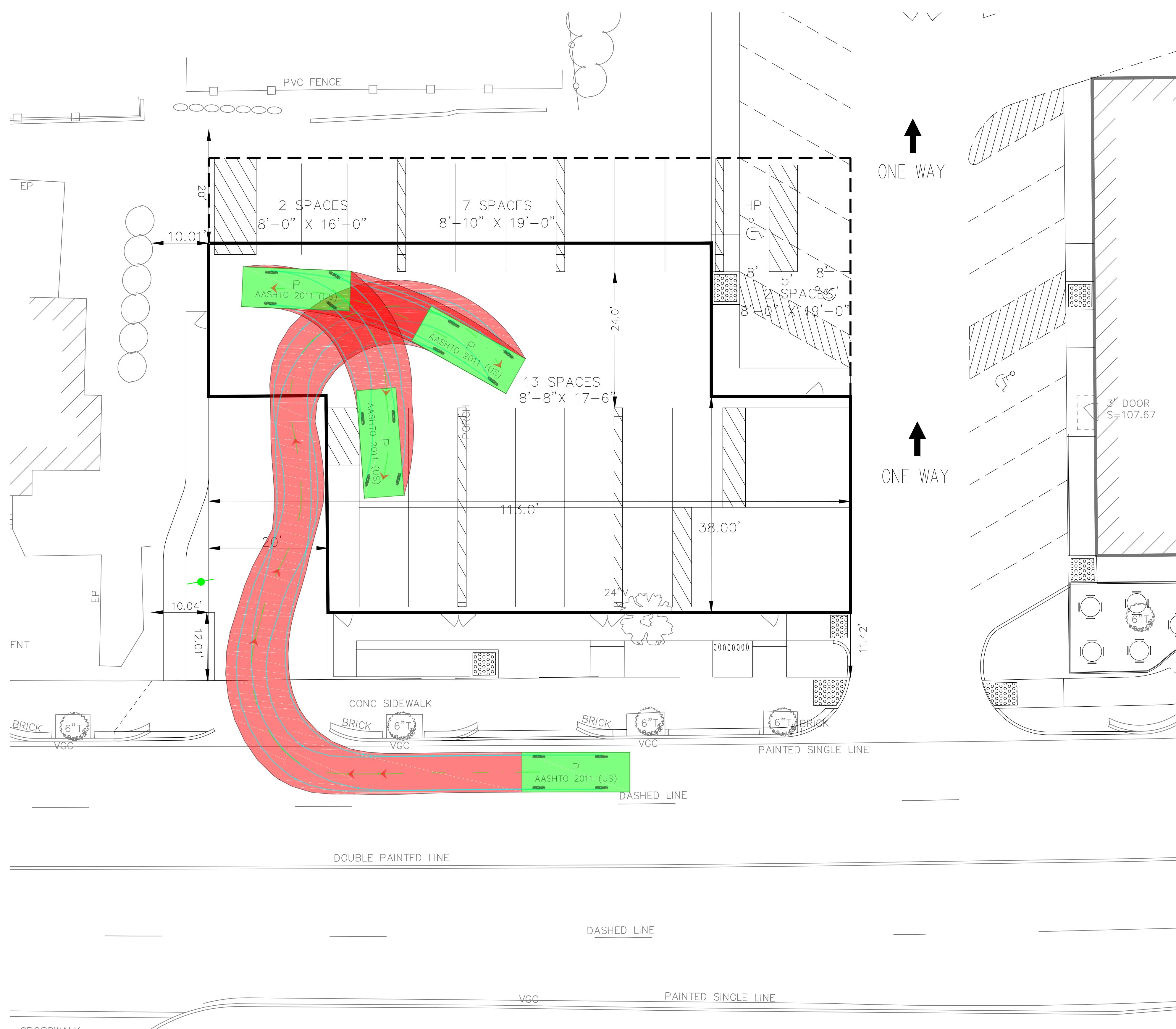
- NOTE:
- FOR SITE DETAILS REFER TO SITE PLAN PREPARED BY NORWOOD ENGINEERING, INC.



NO.	REVISIONS	DATE

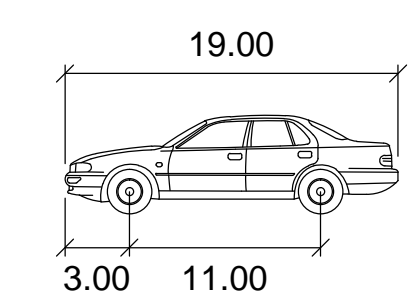
REFUSE TRUCK AUTOTURN			
PROJECT TITLE: 301-323 WASHINGTON STREET WESTWOOD, MASSACHUSETTS			
PROPOSER: PETRUZZIELLO PROPERTIES DEDHAM, MA		BAYSIDE ENGINEERING	
DESIGNED BY: BFS		DATE: 3-22-2016	
CHECKED BY:		DATE:	
DRAFTED BY: KPC		DATE: 3-22-2016	
SHEET: 1		OF: 1	

600 Unicorn Park Drive Woburn, MA 01801
Phone: 781.932.3201 Fax: 781.932.3413
www.baysideengineering.com



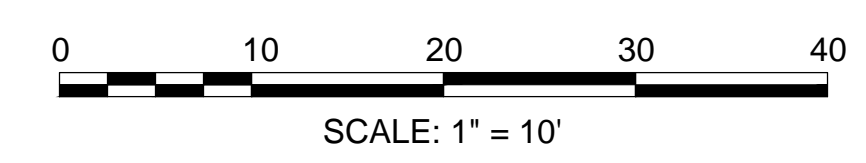
↑
ONE WAY

↑
ONE WAY



Passenger Car	feet
Width	: 7.00
Track	: 6.00
Lock to Lock Time	: 6.0
Steering Angle	: 31.6

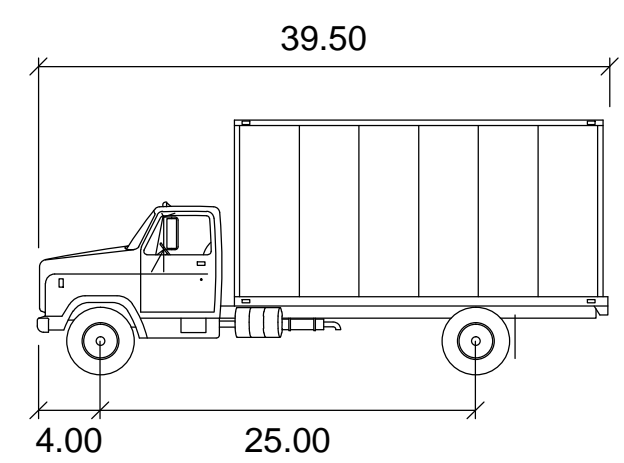
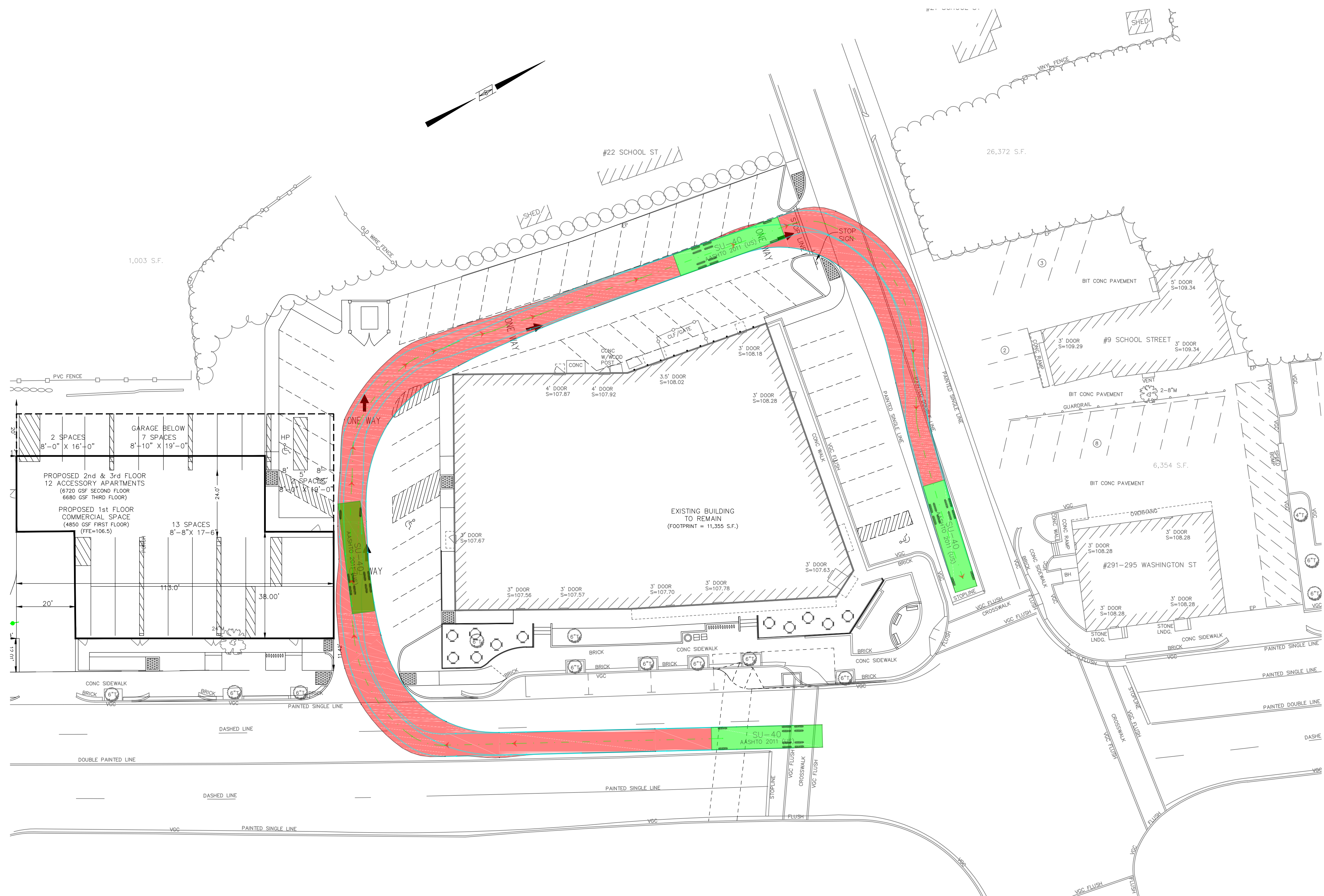
- NOTE:
- FOR SITE DETAILS REFER TO SITE PLAN PREPARED BY NORWOOD ENGINEERING, INC.



NO.	REVISIONS	DATE

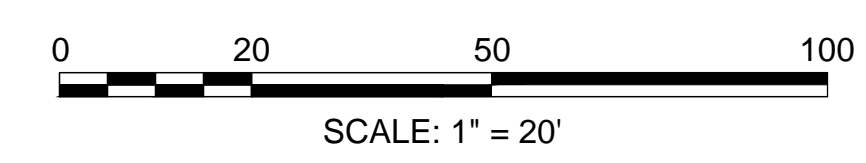
GARAGE PARKING
SCALE 1" = 20'

PASSENGER CAR AUTOTURN			
PROJECT TITLE: 301-323 WASHINGTON STREET WESTWOOD, MASSACHUSETTS			
PROFONENT: PETRUZZIELLO PROPERTIES DEDHAM, MA		BAYSIDE ENGINEERING	
DESIGNED BY: BFS	DATE: 3-22-2016	600 Unicorn Park Drive ▲ Woburn, MA 01801	
CHECKED BY:	DATE:	Phone: 781.932.3201 ▲ Fax: 781.932.3413	
DRAFTED BY: KPC	DATE: 3-22-2016	www.baysideengineering.com	
SHEET: 1	OF: 1		



SU-40	feet
Width	: 8.00
Track	: 8.00
Lock to Lock Time	: 6.0
Steering Angle	: 31.8

- NOTE:
- FOR SITE DETAILS REFER TO SITE PLAN PREPARED BY NORWOOD ENGINEERING, INC.



NO.	REVISIONS	DATE

SU-40 DELIVERY TRUCK AUTOTURN	
PROJECT TITLE: 301-323 WASHINGTON STREET WESTWOOD, MASSACHUSETTS	
PROPOSER: PETRUZZIELLO PROPERTIES DEDHAM, MA	BAYSIDE ENGINEERING
DESIGNED BY: BFS	DATE: 3-22-2016
CHECKED BY:	DATE:
DRAFTED BY: KPC	DATE: 3-22-2016
SHEET: 1	OF: 1

600 Unicorn Park Drive Woburn, MA 01801
Phone: 781.932.3201 Fax: 781.932.3413
www.baysideengineering.com