

Fire Station 2 – Planning Board

February 24, 2015.



- Introduction
- Project Update
 - Project Schedule
 - Space Needs Analysis
 - Building Plans
 - Exterior Imagery
 - Site Development
- Goals / Conclusion

Fire Station 2 – Planning Board

WESTWOOD ISLINGTON FIRE STATION 2 PROGRESS PROJECT SCHEDULE																	
ID	TASK NAME	START DATE	COMPLETION DATE	2014						2015							
				NOV	DEC	JAN	FEB	MAR	APR	MAY	JUNE						
1	Task Force Meetings					X		X				X					
2	Working Group Meetings				X	X	X	X	X	X	X	X	X	X	X		
3	Schematic Design	11/17/2014	12/16/2014				ESTIMATE										
4	Design Development	12/16/2014	1/20/2015						ESTIMATE				60% ESTIMATE 3/13/15				
5	Construction Documents	1/20/2015	3/20/2015														
6	Filed Sub Bids	3/25/2015	4/15/2015														
7	General Contractor Bids	3/25/2015	4/29/2015														
8	Permitting Process	12/2/2014	2/24/2015														
9	Town Meeting Vote	5/4/2015															
10	Construction	Jun-15	Sep-16														

Department	Existing	Proposed
Triage	0 sf	143 sf
Admin	100 sf	431 sf
Dayroom/Dorm	530 sf	761 sf
Toilets/Shower	75 sf	413 sf
Apparatus Bays	2,190 sf	4,069 sf
Support / Storage	130 sf	422 sf
SCBA	0	127 sf
DECON	0	232 sf

Department	Existing	Proposed
Entry	0 sf	67 sf
Dining/Kitchen	150 sf	605 sf
Fitness Room	170 sf	251 sf
Turn-Out-Gear	0 sf	204 sf
Mach/Mech./Elect/Elev. /Stairs	140 sf	1307 sf
TOTAL PROGRAM	3,485 sf	9,032 sf
Corridors/ Wall thickness, Chases	213 sf	2,946sf
GRAND TOTAL PROGRAM	3,698 SF	11,978 Sf

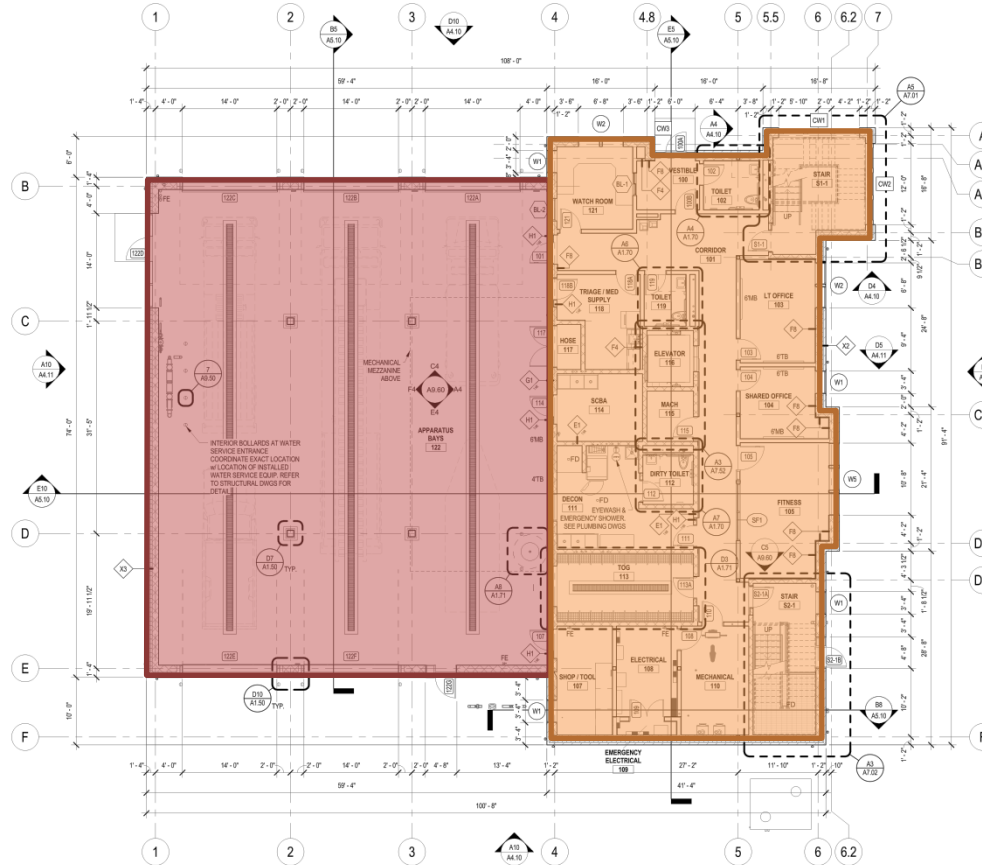
Space Needs Analysis



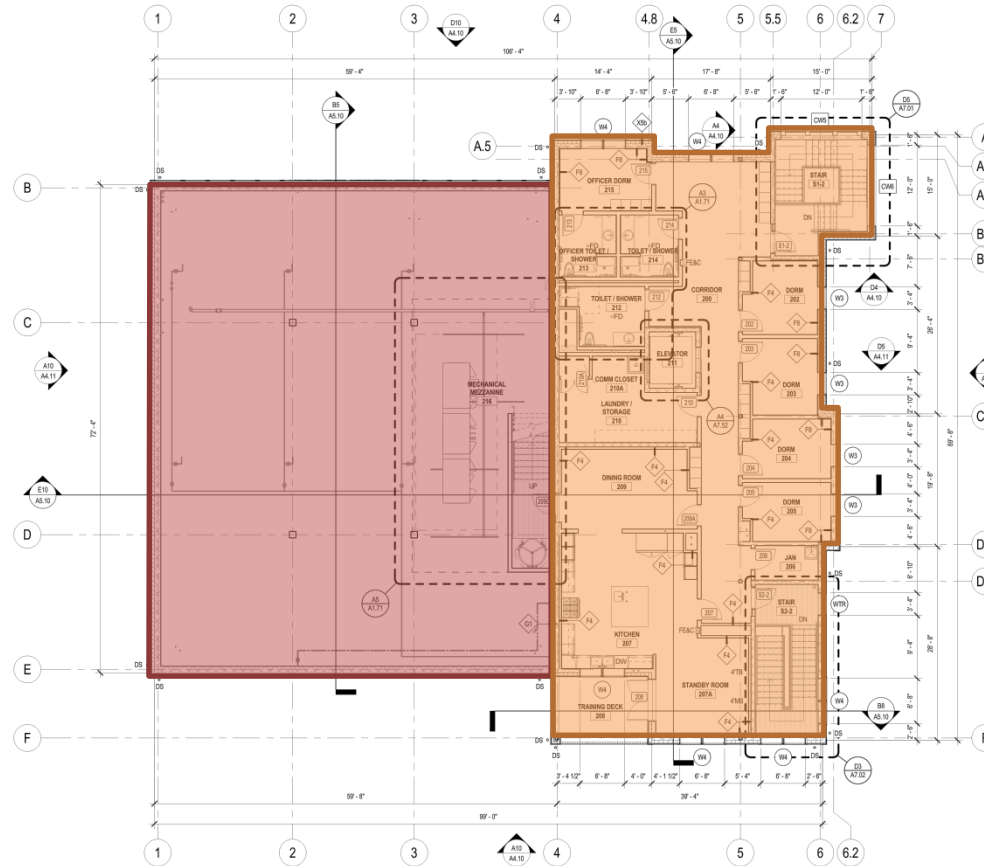
Existing Site Aerial View

Fire Station 2 – Planning Board

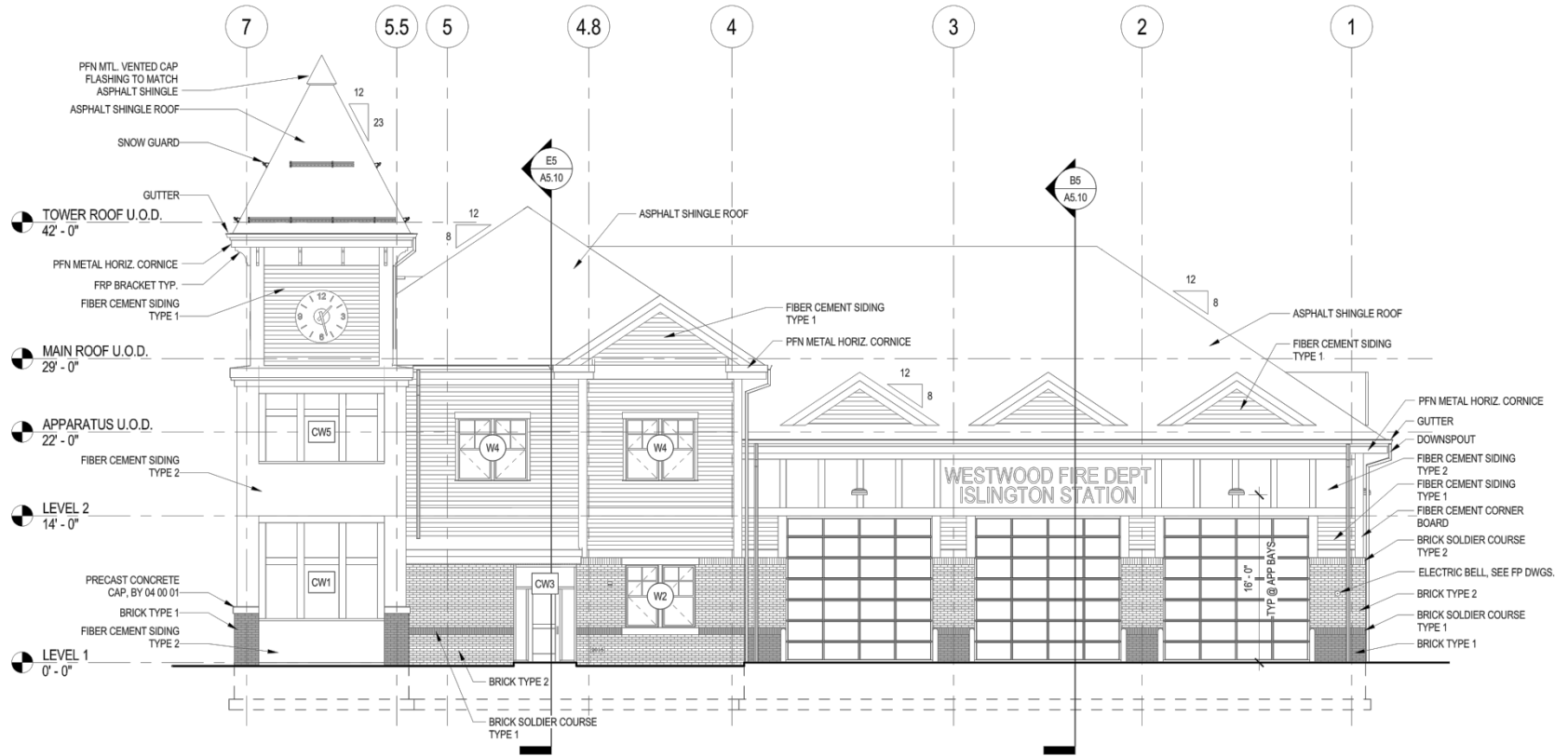
February 24, 2015.



First Floor Plan



Second Floor Plan



D10 NORTH EXTERIOR ELEVATION
1/8" = 1'-0"

Exterior Main Elevation



Proposed Station



3D Walk-Around Building



3D Walk-Around Building



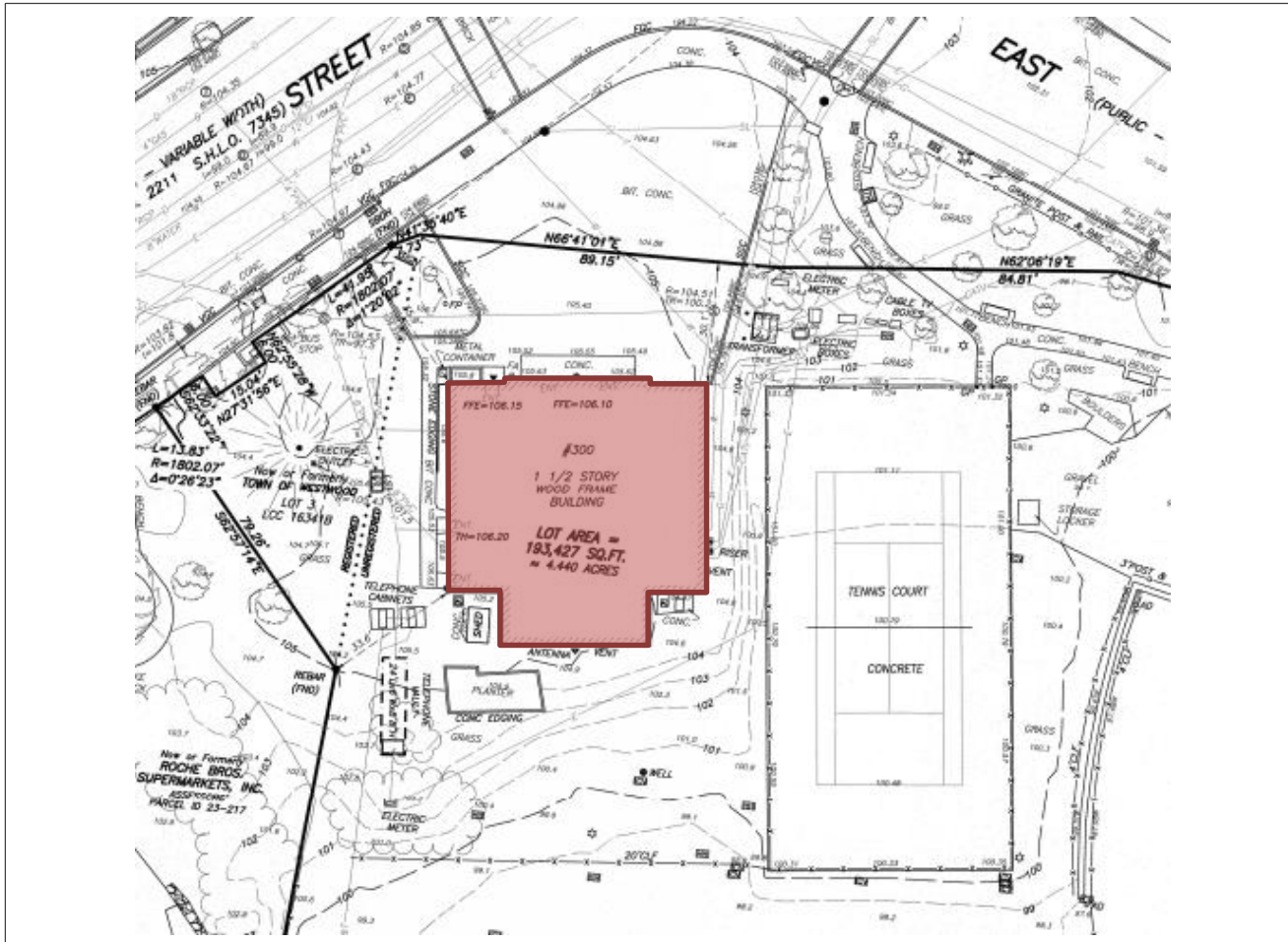
3D Walk-Around Building

Fire Station 2 – Planning Board

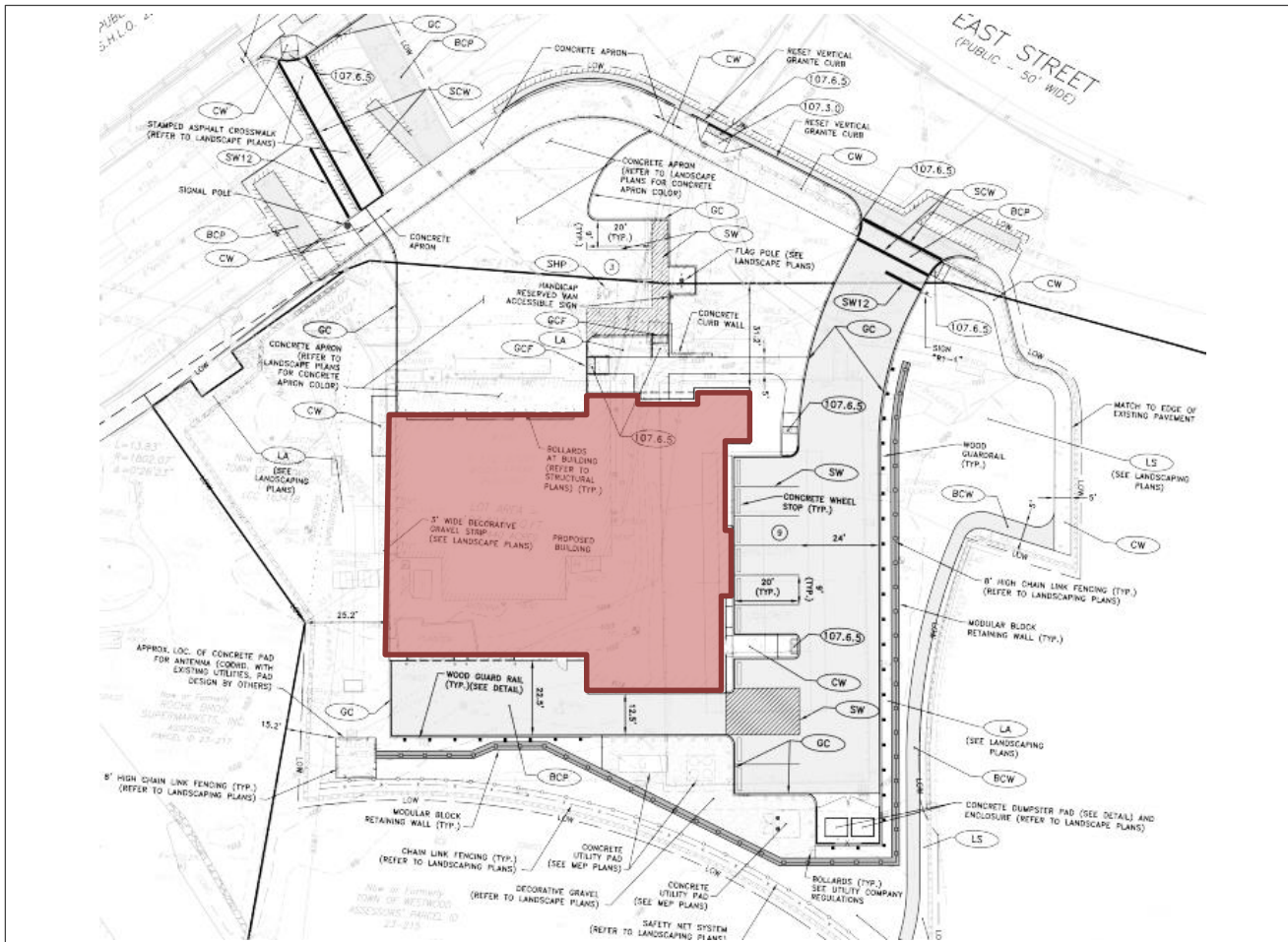
February 24, 2015.



3D Walk-Around Building



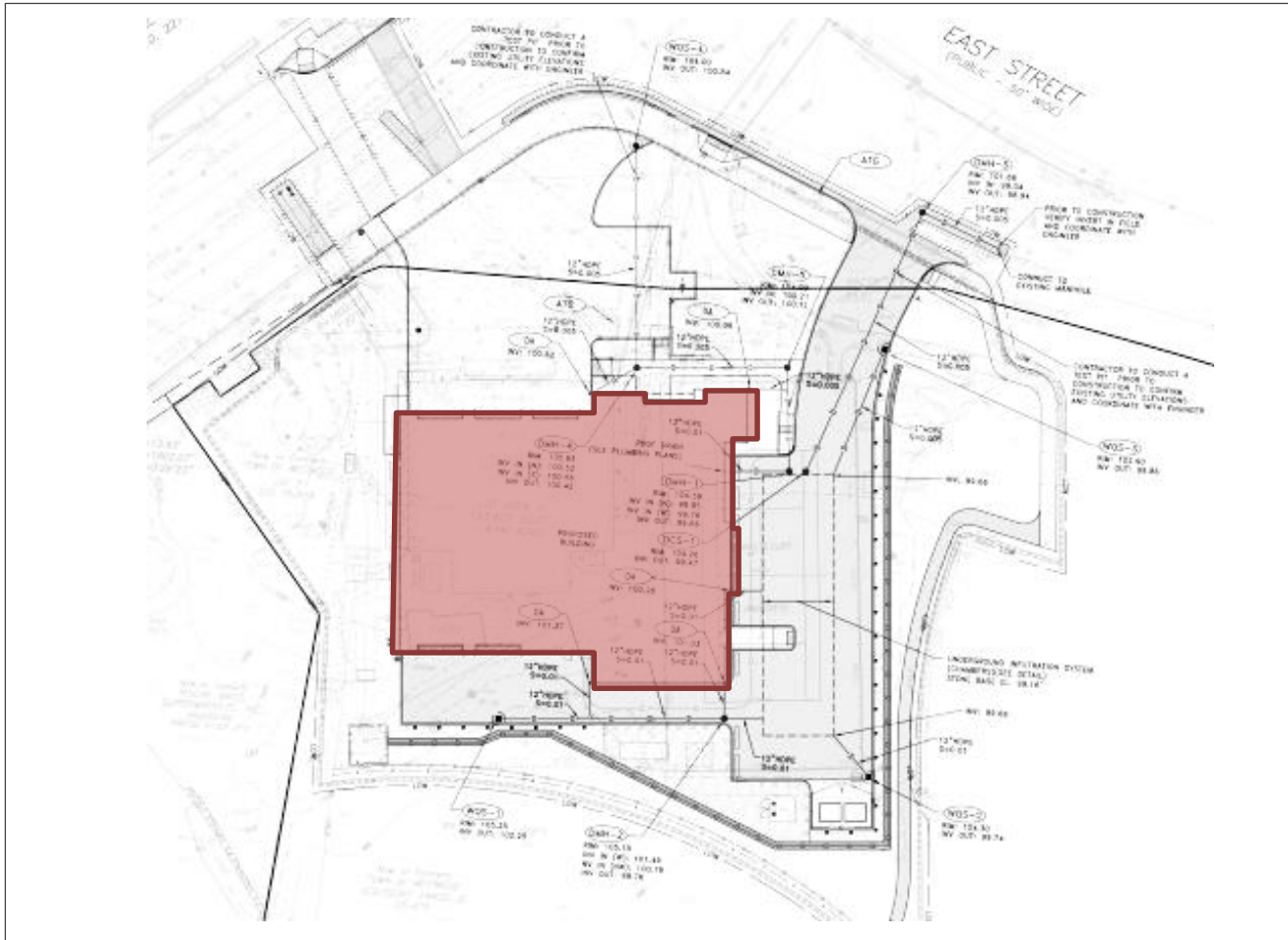
Site: Existing Conditions



Site: Proposed Site Improvements

Fire Station 2 – Planning Board

February 24, 2015.



Site: Proposed Drainage

Fire Station 2 – Planning Board

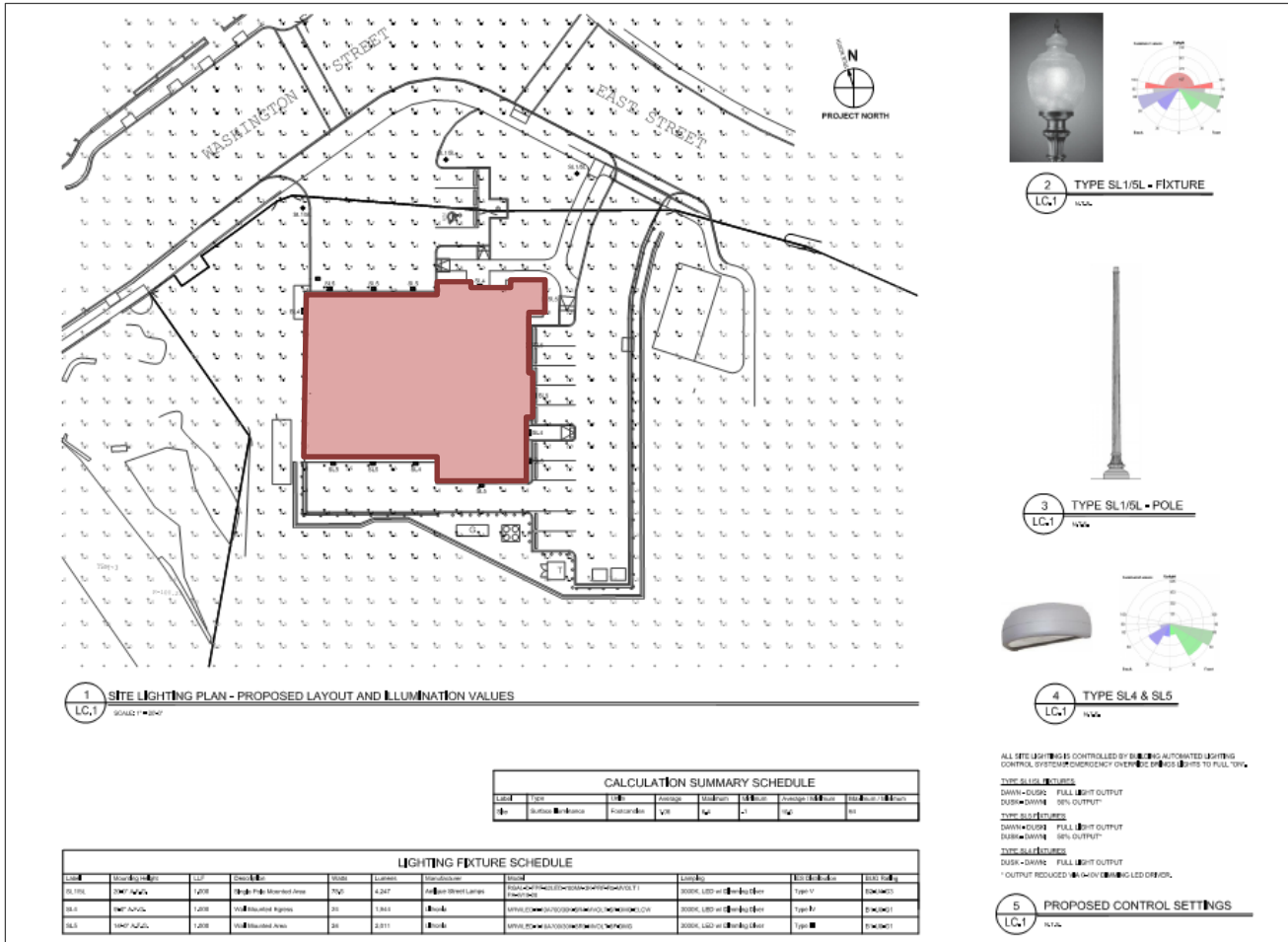
February 24, 2015.



Site: Proposed Utilities

Fire Station 2 – Planning Board

February 24, 2015.



Site: Proposed Lighting

-Access, Traffic and Safety

-Site Generation

-Data Collection:

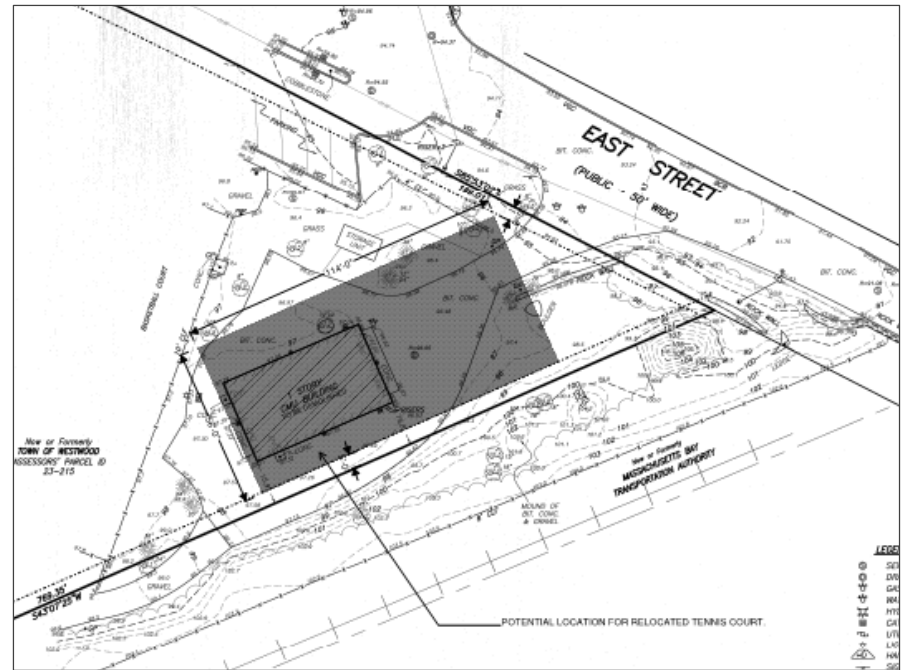
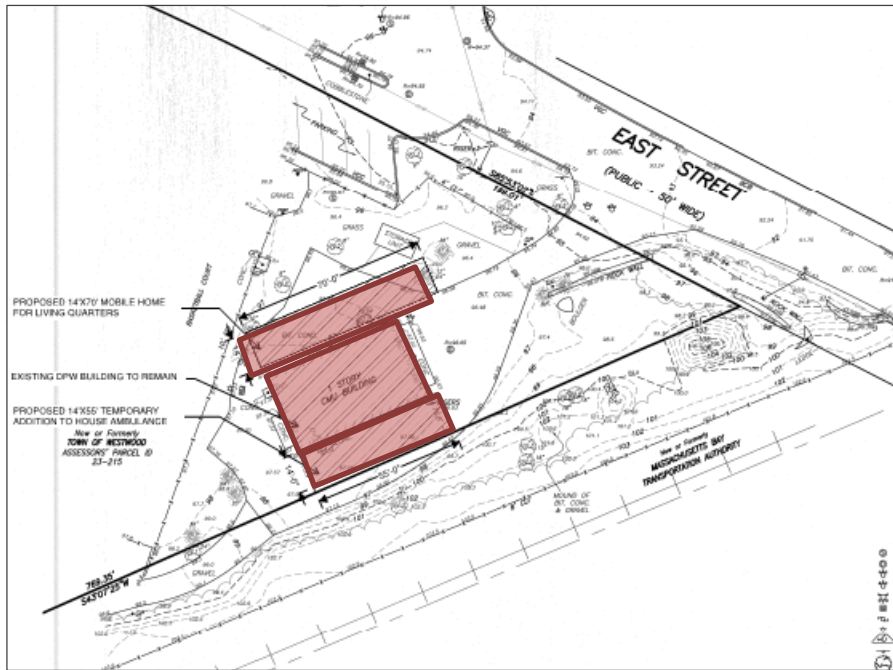
- Traffic Counts
- Crash Data
- Speed study
- Observations

-Findings. Recommendations:

- Normal Incidents
- Slight Speeding
- Relocated NB Stop bar
- Overall LOS



Transportation



Site: Temporary Off Site Facility & Potential Tennis Court Location

The FS2 Project:

- Program meets the Fire Department Space Needs
- Site is Better Utilized
- Building has (3) Apparatus Bays with necessary support
- Building has functional Office / Living Space
- Building has built-in training opportunities
- Materials are high quality and low maintenance
- Imagery sets the tone for Islington Development
- Most energy efficient/cost effective Design approach
- Construction will be complete by Fall 2016