

# The Westwood We Want: Revisited 2010-11

## **Visioning Workshop**

***Kicking off the Comprehensive Plan Update***

***with the citizens of Westwood***



October 2, 2010

Thurston Middle School Cafeteria

9:00 am -12:00 pm

# Elements of the Participation Process

- The initial visioning workshop(s)
- The Comprehensive Plan Steering Committee (municipal board reps)
- Topical or planning element workshops (e.g. Housing or Economic Development or Open Space, etc.)
- Planning Board discussions

# Why Do We Need to Update the 2000 Comprehensive Plan?

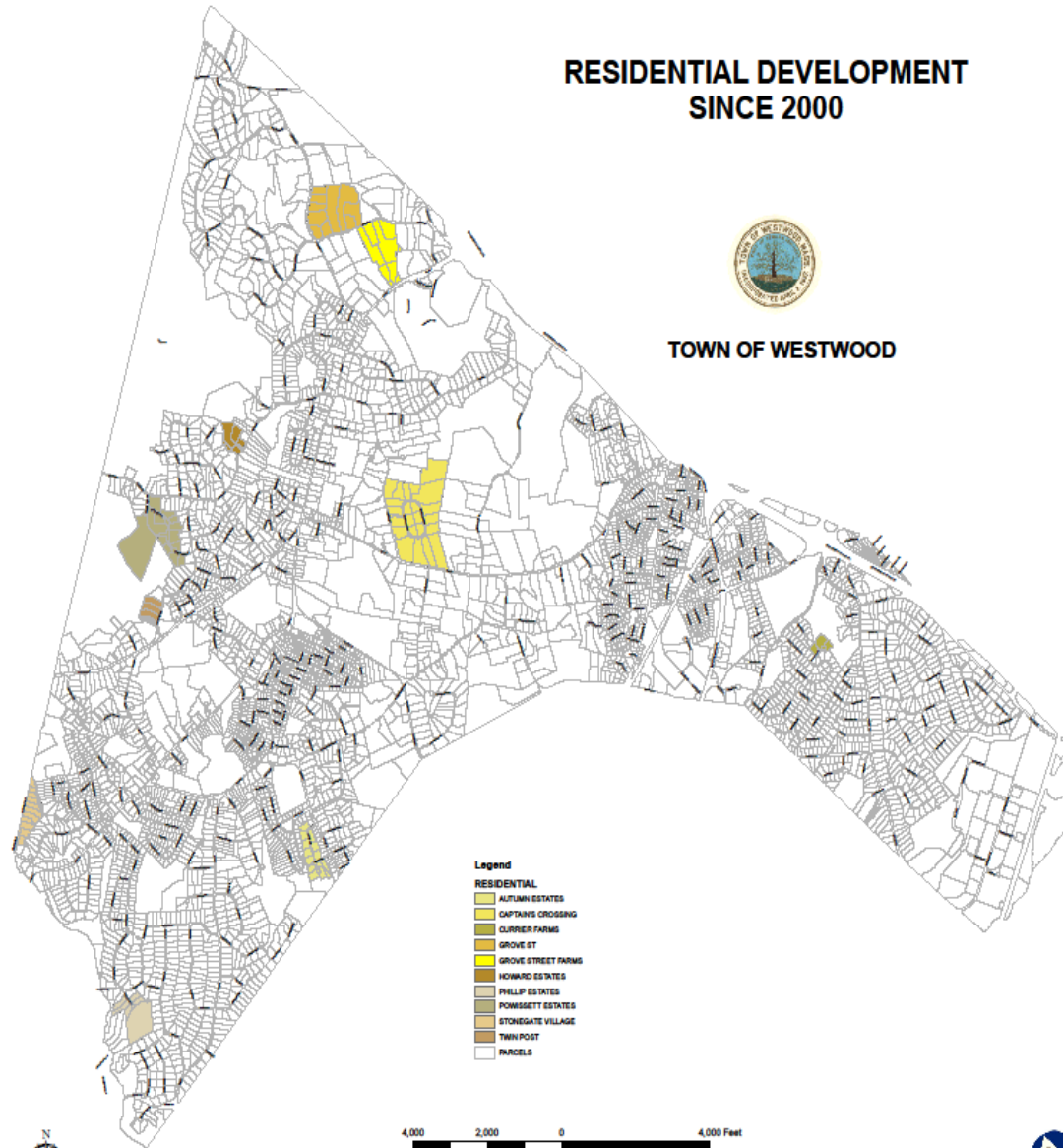
- Things change in 10 years:
  - The state of the economy can change dramatically
  - The types of businesses and technologies change.
  - Transportation and infrastructure investment change.
  - Housing needs broaden.
  - Open space dwindles.
  - State, federal and local laws and regulations change.
  - Environmental quality continues to undergo stress.
  - Populations and their characteristics change.
  - Municipal facilities and services needs expand.
- Thus, 10 years is about as long as a community wants to go without reexamining itself and its future.

A Graphic Snapshot of the  
Last Ten Years (three new land  
use map series)

# RESIDENTIAL DEVELOPMENT SINCE 2000



TOWN OF WESTWOOD



### Legend

#### RESIDENTIAL

- AUTUMN ESTATES
- CAPTAIN'S CROSSING
- CURRIER FARMS
- GROVE ST
- GROVE STREET FARMS
- HOWARD ESTATES
- PHILLIP ESTATES
- POMESGETT ESTATES
- STONEGATE VILLAGE
- TWIN POST
- PARCELS



4,000 2,000 0 4,000 Feet

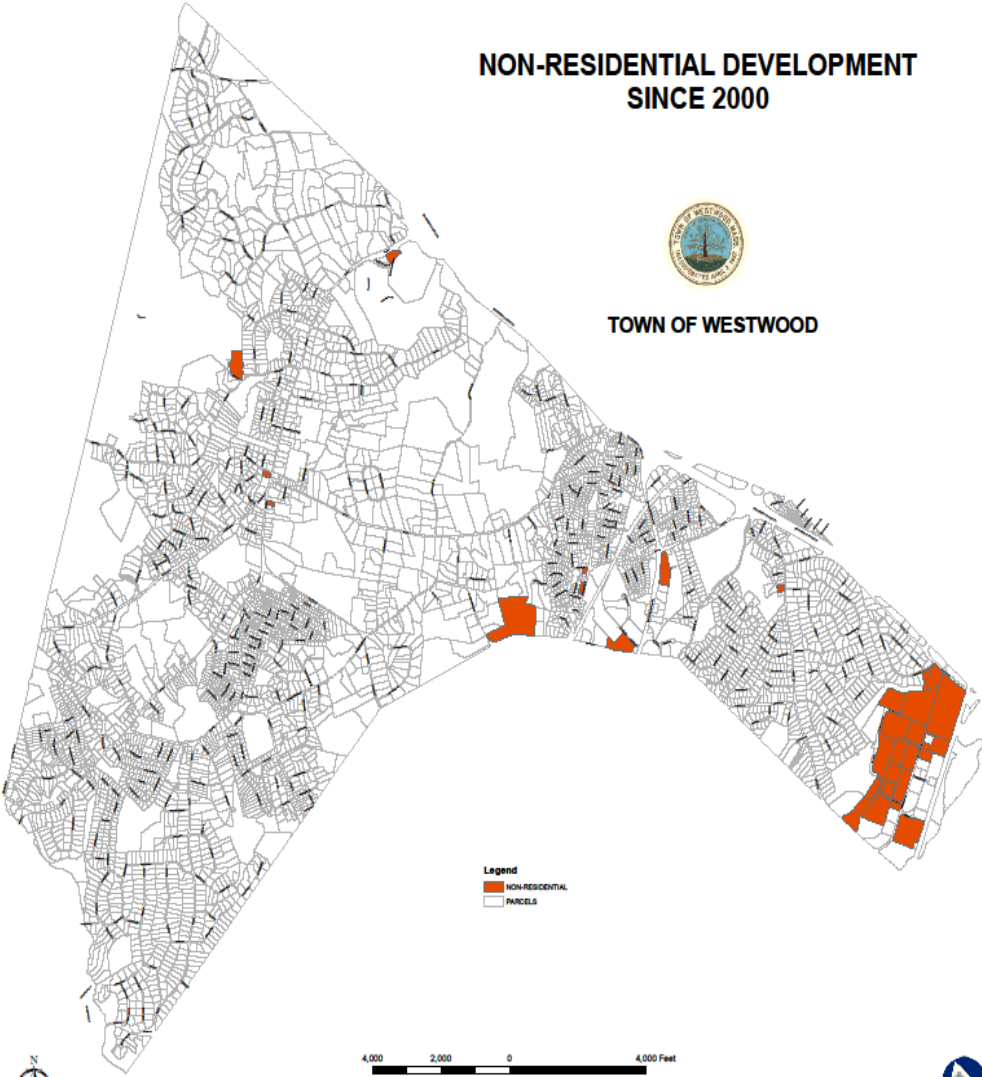


Date: 9/23/2010

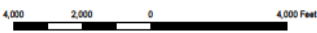
# NON-RESIDENTIAL DEVELOPMENT SINCE 2000



TOWN OF WESTWOOD



Legend  
■ NON-RESIDENTIAL  
□ PARCELS

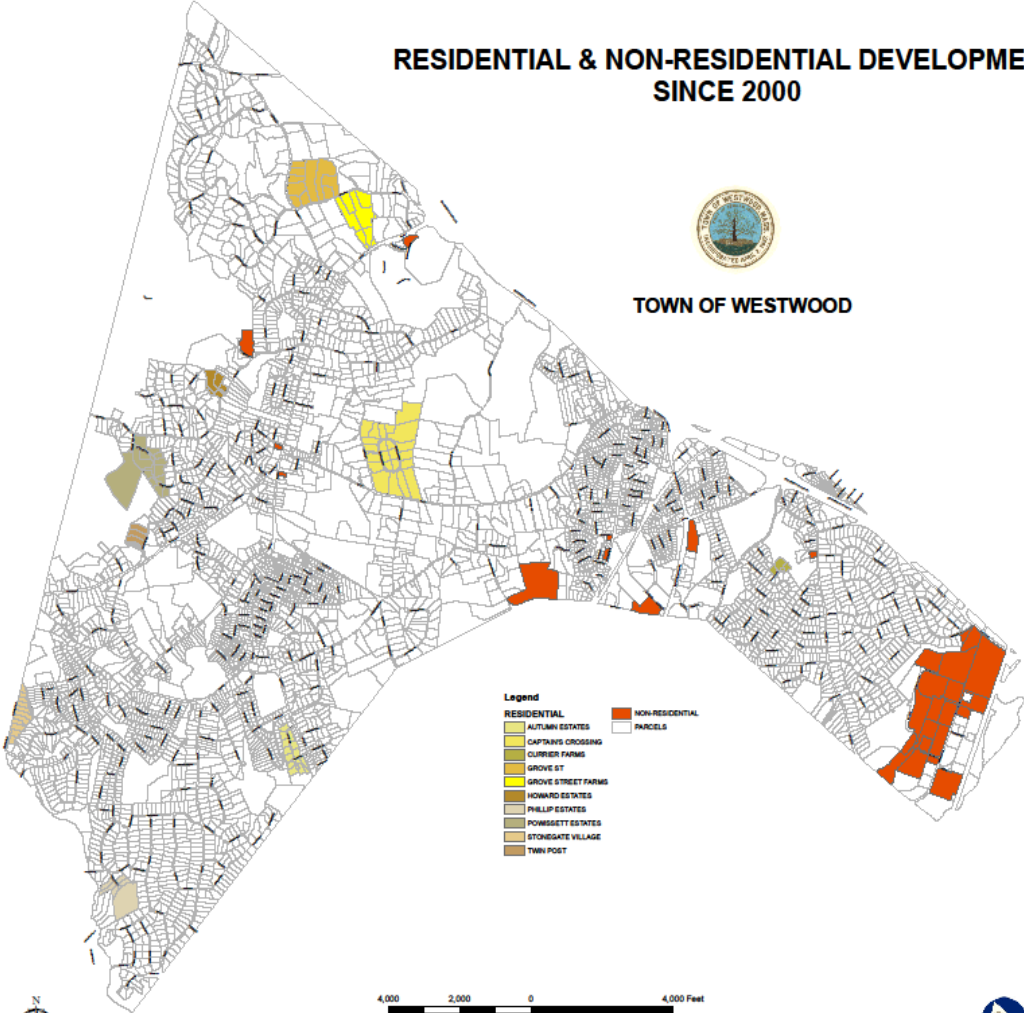


Date: 8/28/2010

# RESIDENTIAL & NON-RESIDENTIAL DEVELOPMENT SINCE 2000



TOWN OF WESTWOOD



- Legend**
- RESIDENTIAL
    - AUTUMN ESTATES
    - CAPTAIN'S CROSSING
    - CLYBURN FARMS
    - GROVE ST
    - GROVE STREET FARMS
    - HOWARD ESTATES
    - PHILLIP ESTATES
    - POWISSETT ESTATES
    - STORISDALE VILLAGE
    - TWIN POST
  - NON-RESIDENTIAL
  - PARCELS



4,000 2,000 0 4,000 Feet

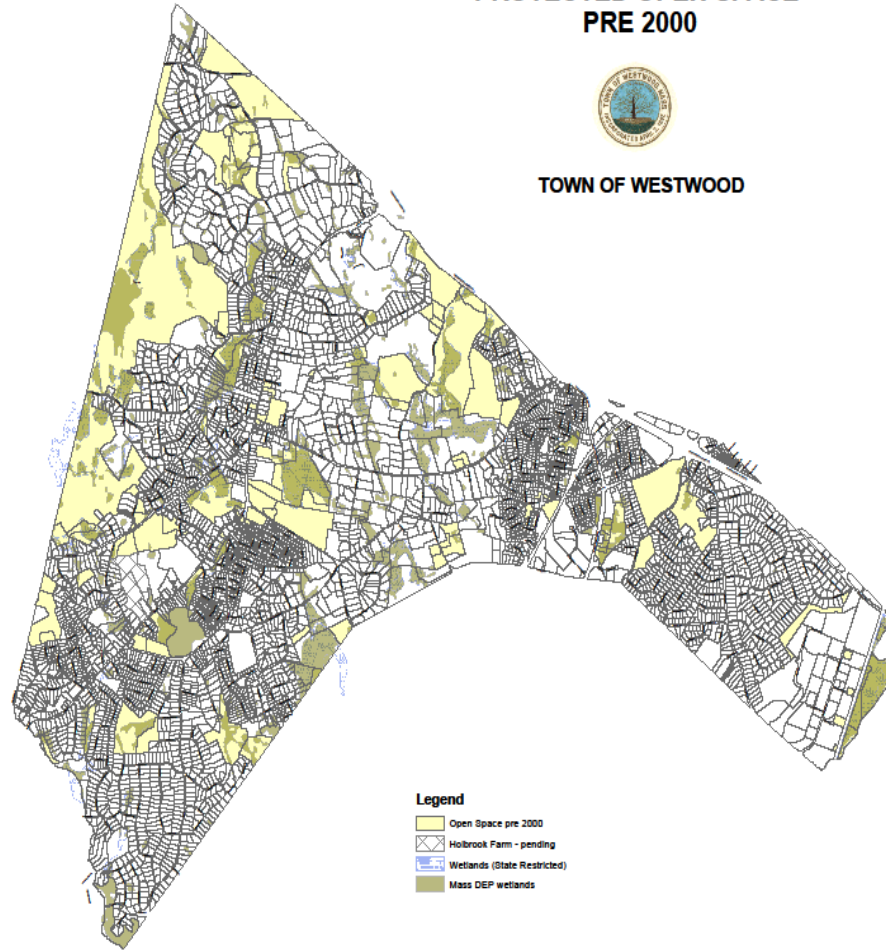


Date: 02/26/2010

# PROTECTED OPEN SPACE PRE 2000



TOWN OF WESTWOOD



### Legend

- Open Space pre 2000
- Holbrook Farm - pending
- Wetlands (State Restricted)
- Mass DEP wetlands



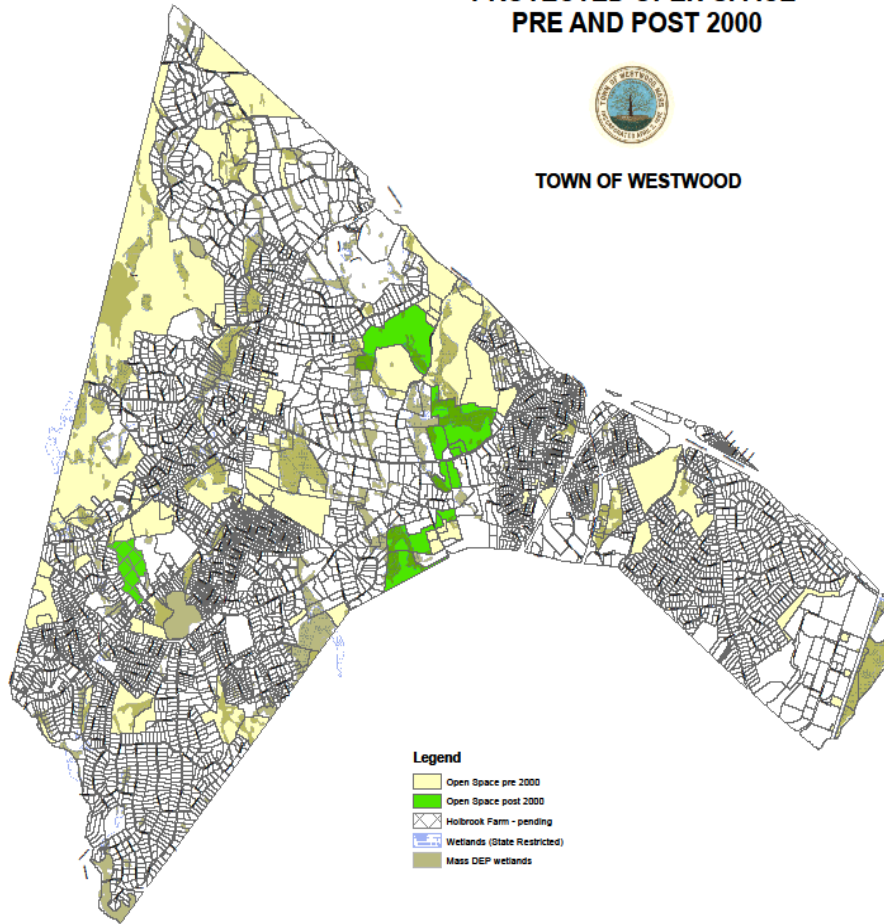
Date: 9/29/2010



# PROTECTED OPEN SPACE PRE AND POST 2000



TOWN OF WESTWOOD



### Legend

- Open Space pre 2000
- Open Space post 2000
- Hobbrook Farm - pending
- Wetlands (State Restricted)
- Mass DEP wetlands



0 1,500 3,000 6,000 9,000 12,000 Feet

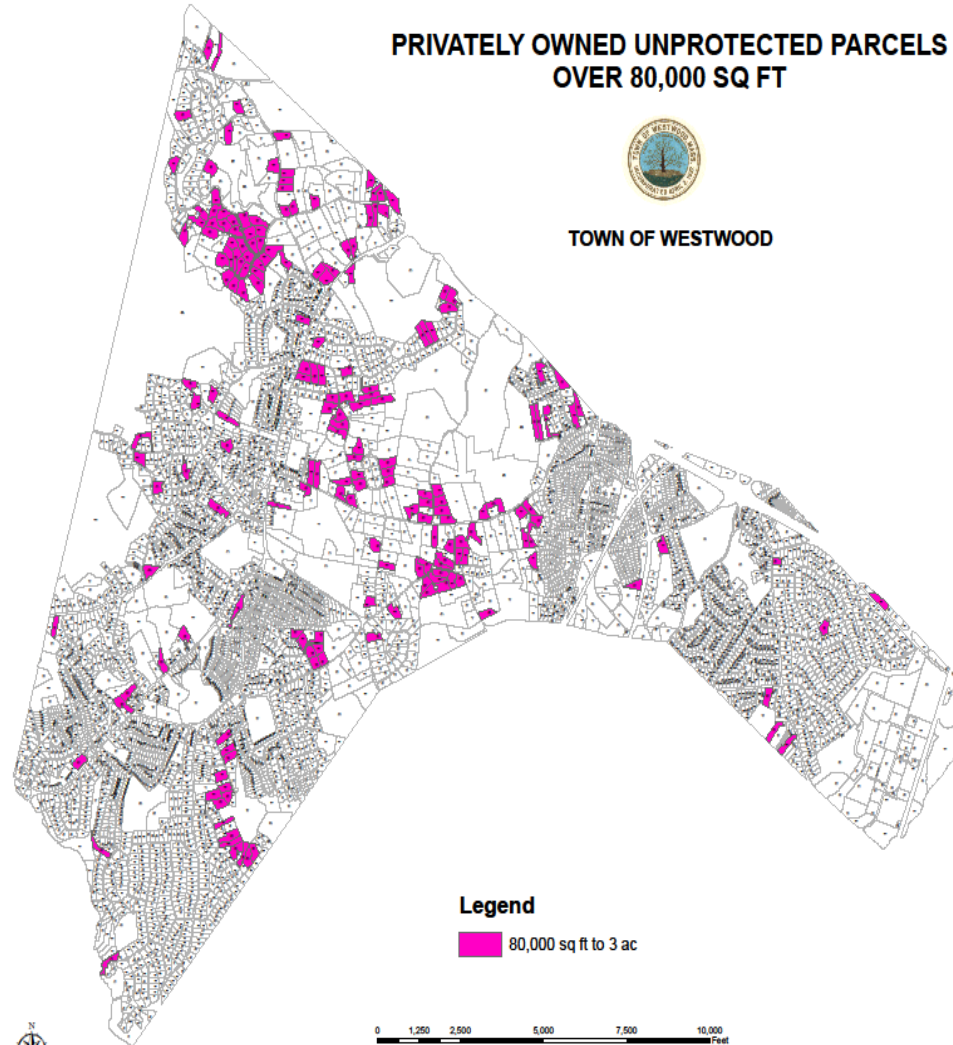


Date: 9/29/2010

# PRIVATELY OWNED UNPROTECTED PARCELS OVER 80,000 SQ FT



TOWN OF WESTWOOD



## Legend

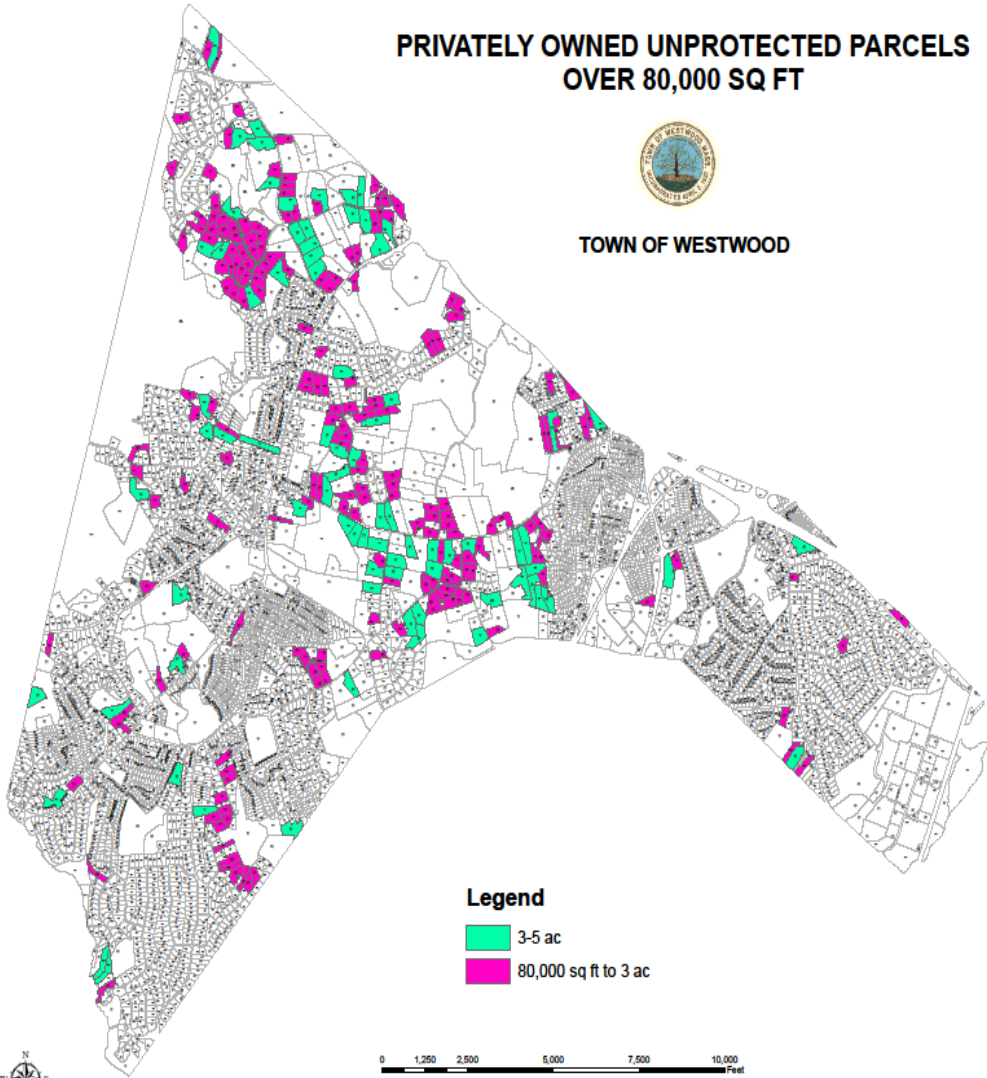
 80,000 sq ft to 3 ac



# PRIVATELY OWNED UNPROTECTED PARCELS OVER 80,000 SQ FT

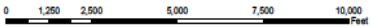


TOWN OF WESTWOOD



### Legend

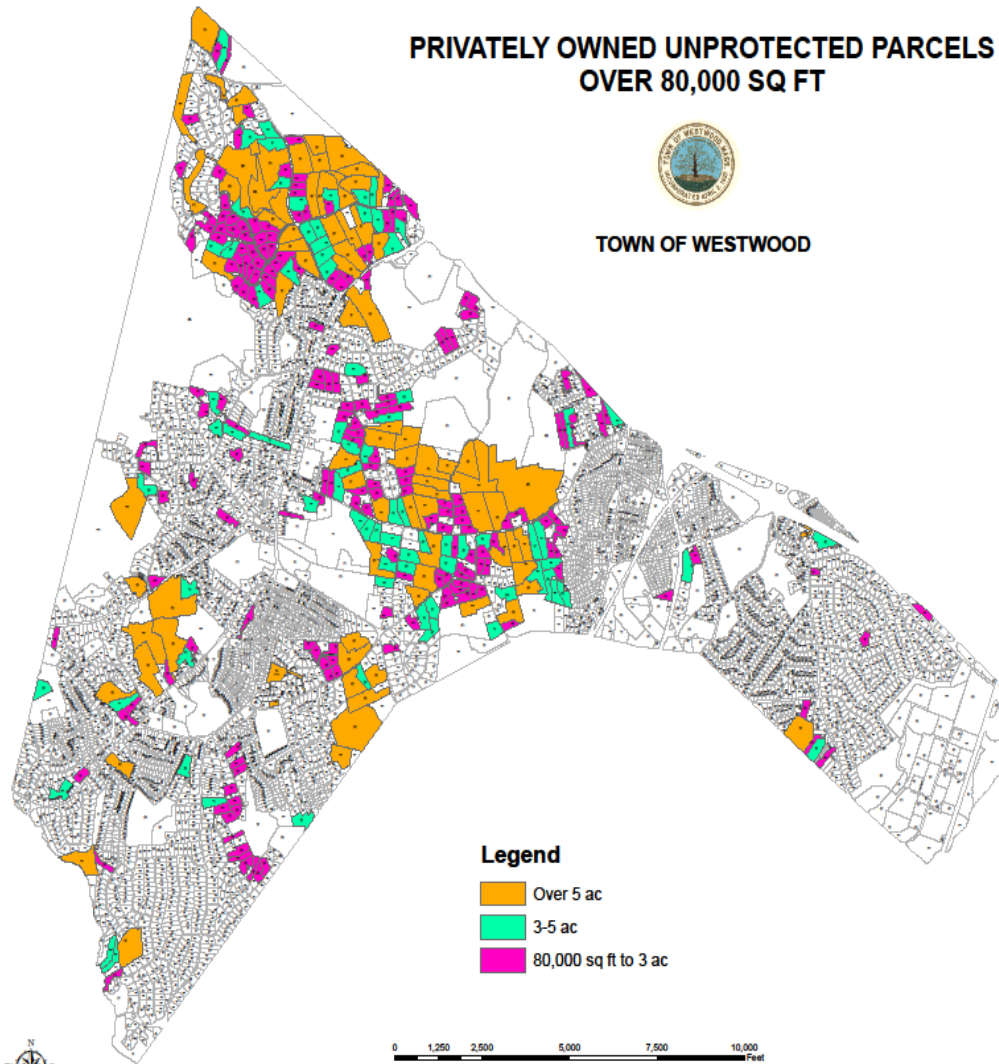
- 3-5 ac
- 80,000 sq ft to 3 ac



# PRIVATELY OWNED UNPROTECTED PARCELS OVER 80,000 SQ FT



TOWN OF WESTWOOD



### Legend

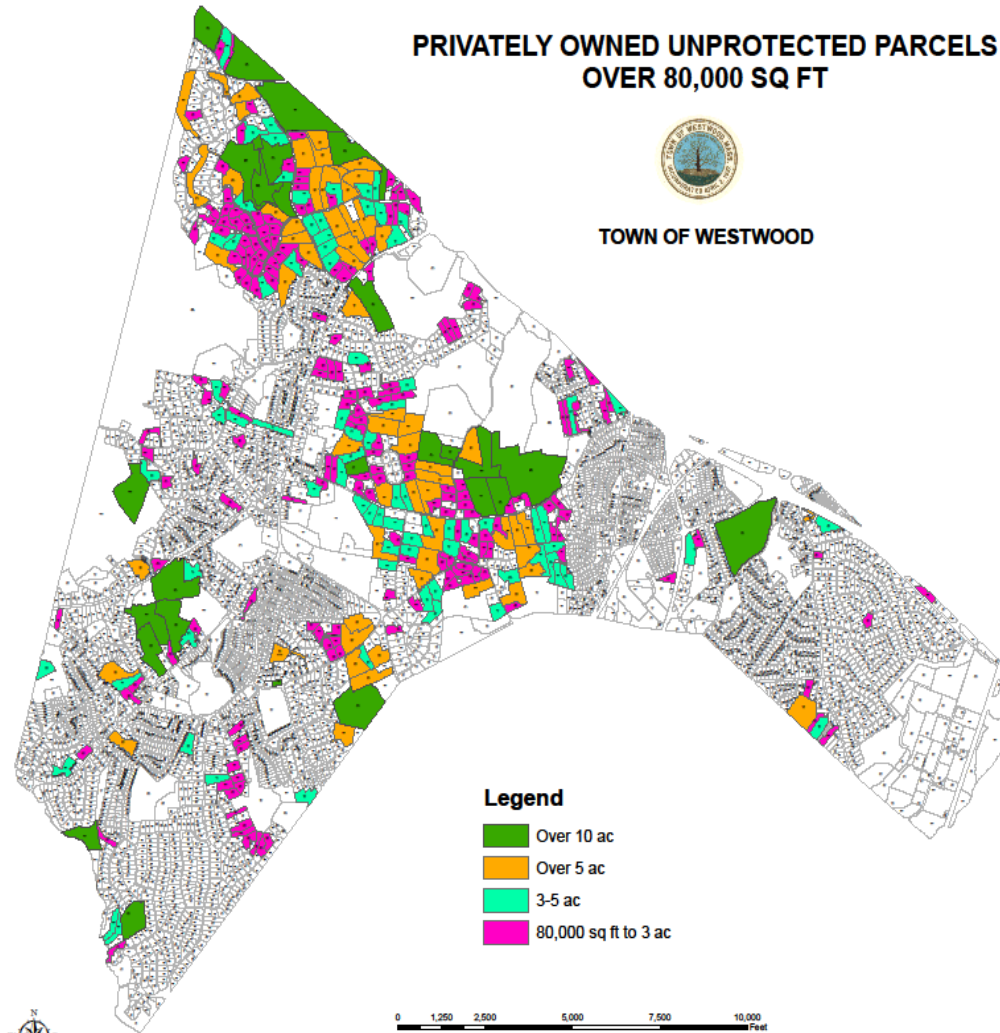
- Over 5 ac
- 3-5 ac
- 80,000 sq ft to 3 ac



# PRIVATELY OWNED UNPROTECTED PARCELS OVER 80,000 SQ FT



TOWN OF WESTWOOD



## Legend

- Over 10 ac
- Over 5 ac
- 3-5 ac
- 80,000 sq ft to 3 ac

# Achievements from 2000 Comprehensive Plan

- Crafting of mixed use, transit oriented district at University Avenue
- Constructing 3 major new municipal facilities to meet space needs
- Being a leader in meeting regional transportation needs
- Expanding housing opportunity
- Protecting natural resources
- Reinforcing village and countryside distinctions
- Making real commitments to economic development
- Taking steps toward energy & water conservation
- Furthering pedestrian & bicycle transportation modes
- Taking action to improve the regulatory structure and quality of business

# Breakout Group Facilitators

Community Character:

*Nora Loughnane*

Housing Needs:

*Barbara McDonald*

Economic Development:

*Chris McKeown*

Transportation:

*Jeff Bina*

Community Facilities, Services  
& Recreation:

*Mike Jaillet*

Open Space, Natural Resources  
and Historical Preservation:

*Jack Wiggin*