

# June Street Playground



## Town of Westwood ADA Transition Plan

June 2023



Institute for Human Centered Design

560 Harrison Ave, Unit 401, Boston, MA 02118  
www.IHCDesign.org • info@IHCDesign.org  
617-695-1225 voice/ tty

### Background

June Street Playground is located north of 199 Highview Street. Park amenities include one (1) playground, benches, and one (1) picnic table. There is one (1) park entry point off Highview Street on the south side of the playground. There is no on-site parking.

### Key Accessibility Issues

#### Exterior Routes

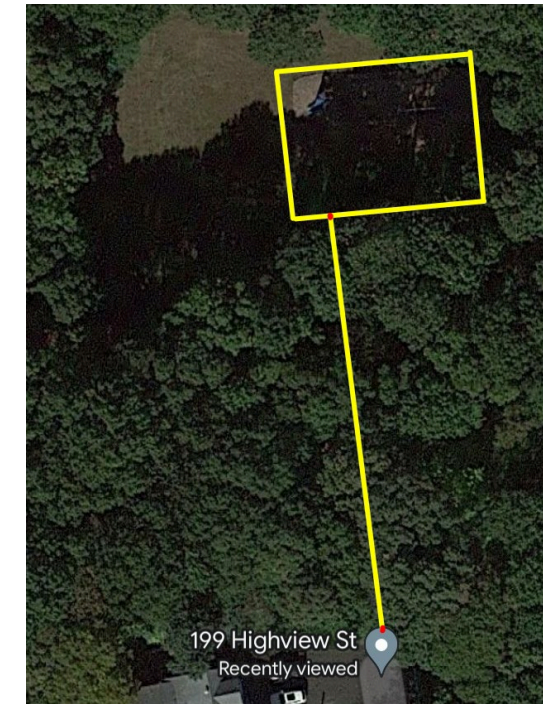
Accessibility issues include routes with excessive level changes. Additionally, there is only a dirt route that is not stable, firm, and slip-resistant provided from the park entrance to one (1) bench, and one (1) picnic table.

#### Play Areas

Accessibility issues include lack of a compliant impact-attenuating surface under and around the play components, and an accessible route to and around the playground.

**Note:** The Massachusetts Architectural Access Board (MAAB) does not consider engineered wood fiber (EWF) to comply with its regulation requiring an accessible route to each play component and around the playground.

Figure 1: The following image uses a yellow line to indicate the approximate suggested location for a 48" wide min. stable, firm and slip-resistant accessible route connecting park entry points to and around the playground.



### Additional Accessibility Issues

- Lack of an accessible picnic table near the playground.

### Order of Magnitude Cost Estimates

- Provide one (1) accessible picnic table: \$1,400

**Total: \$1,400\***

**\*Note:** IHCD is not providing costs for some exterior issues such as estimating the cost to repair or provide expanses of sidewalk and walkways. IHCD is also not providing costs for playground surfaces.

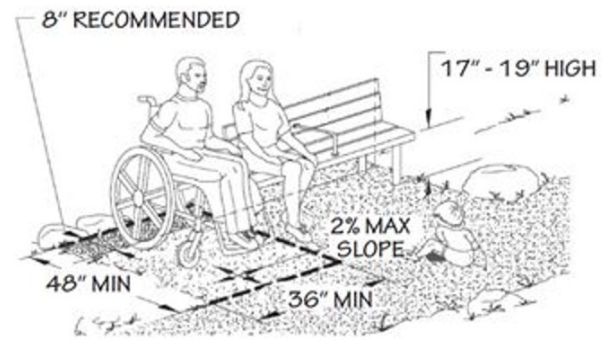
### Best Practice and Inclusive Design

Best practice and inclusive design recommendations include elements that are not required in the standards but may create enhanced experiences for all users.

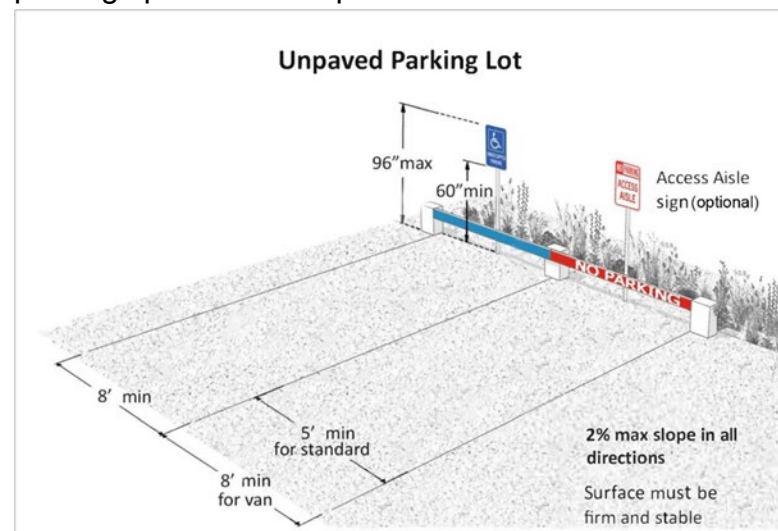
- Recommend providing a 36" by 48" min. stable, firm and slip-resistant area alongside at least one bench in each distinct area where benches are provided so that a person using a wheelchair or other mobility device is able to sit alongside someone seated on the bench with their shoulders aligned.





## June Street Playground

See the following illustration for best practice recommendations for benches:





- Recommend providing an accessible parking space near the playground entrance on the opposite side of the road from 199 Highview Street. See the following illustration for a parking space in an unpaved lot:



ID	Location	Floor	Room	Element	Type	Photo	Issues	Current Measure	Recommendations	Quantity	Price	Cost Estimation
<b>Approach and Entrance</b>												
<b>Exterior Access Route</b>												
1	Route to Park	Ext.		Exterior Access Route	Exterior		Level changes > 1/4" Accessible route not provided	1.5" -	Alter the change in level to be 1/4" high max. Ensure an accessible route is provided to all program areas, including the playground.	1	-	-
<b>Access to Goods and Services</b>												
<b>Picnic Tables</b>												
2	Near Playground	Ext.		Picnic Tables	N/A		At least 5% accessible spaces not provided Picnic table not on an accessible route Knee clearance less than 19" deep	- - -	Ensure that at least 5% (minimum one) of picnic tables are accessible. Ensure that the accessible picnic table is connected to an accessible route. Provide at least one picnic table with knee clearance that is 19" deep min.	1	1400	\$1400
<b>Benches</b>												
3	Playground	Ext.		Benches	N/A		No accessible route to one bench in this area	-	Provide an accessible route to at least one bench in this area.	1	-	-
<b>Play and Sport Areas</b>												
<b>Play Areas</b>												
4	Near Playground	Ext.		Play Areas	N/A		Accessible route not provided around playground Accessible route not provided at play components	- -	Install an accessible route to and around the playground. Provide a compliant impact-attenuating surface under and around the play components.	1	-	-



ID	Location	Floor	Room	Element	Type	Photo	Issues	Current Measure	Recommendations	Quantity	Price	Cost Estimation
<div style="border: 1px solid gray; padding: 2px;">Best Practice</div>												
<div style="border: 1px solid gray; padding: 2px;">Benches</div>												
5	Playground	Ext.		Benches	N/A				Recommend providing a 36" by 48" min. stable, firm and slip-resistant area alongside at least one bench in each distinct area where benches are provided so that a person using a wheelchair or other mobility device is able to sit alongside someone seated on the bench with their shoulders aligned.	1	-	-
<div style="border: 1px solid gray; padding: 2px;">Off-Street Parking Lot or Garage</div>												
6	Route to Park	Ext.		Off-Street Parking Lot or Garage	N/A				Recommend providing an accessible parking space near the playground entrance on the opposite side of the road from 199 High View Street.	1	-	-