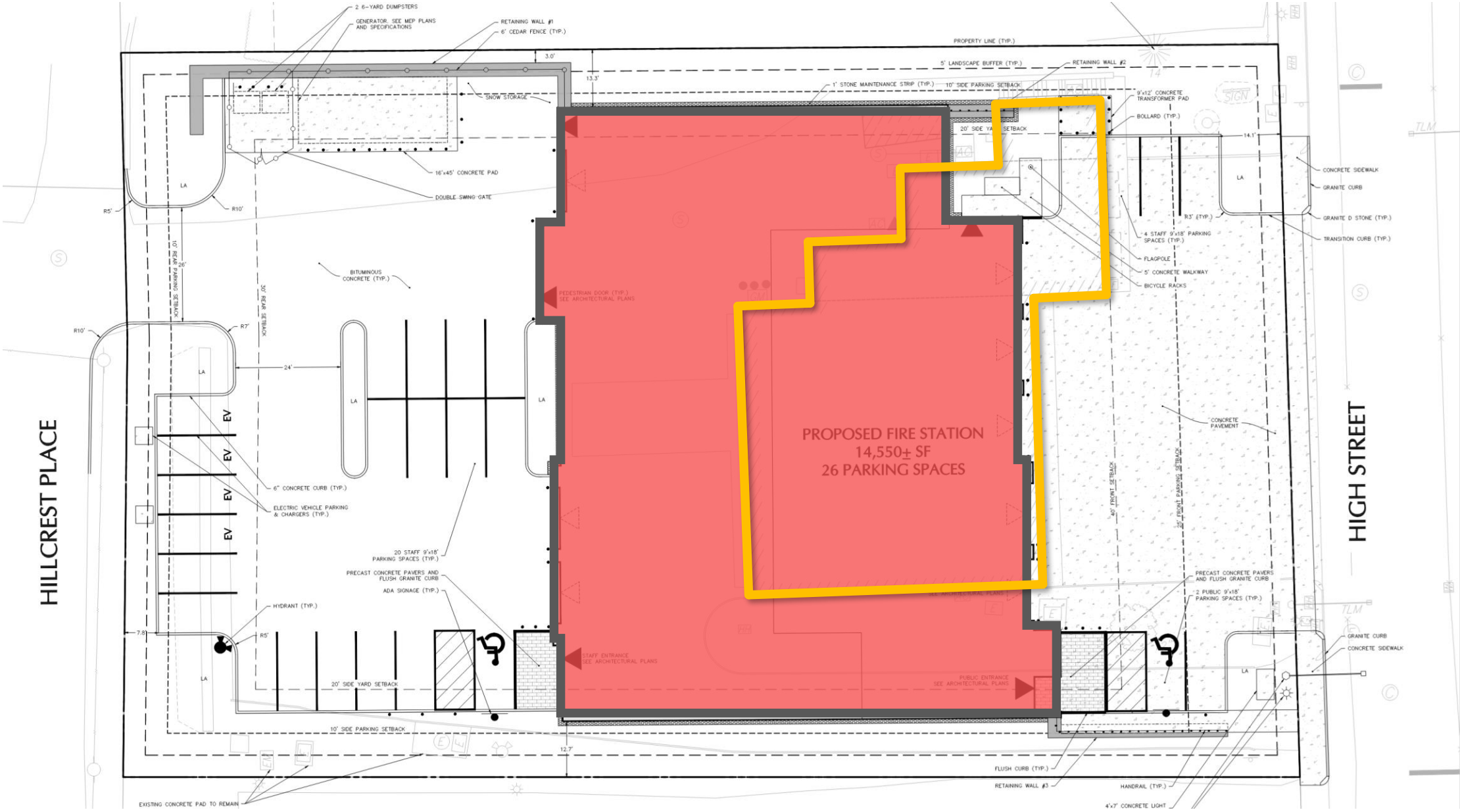


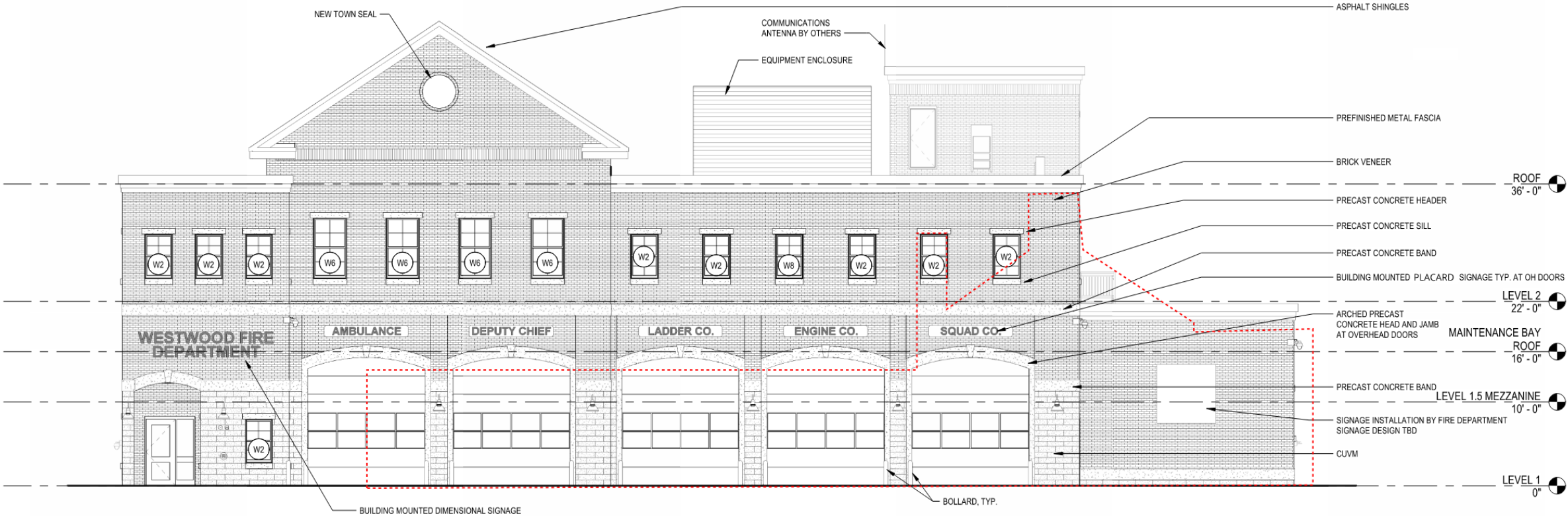
# WESTWOOD FIRE STATION 1



# WESTWOOD FIRE STATION 1

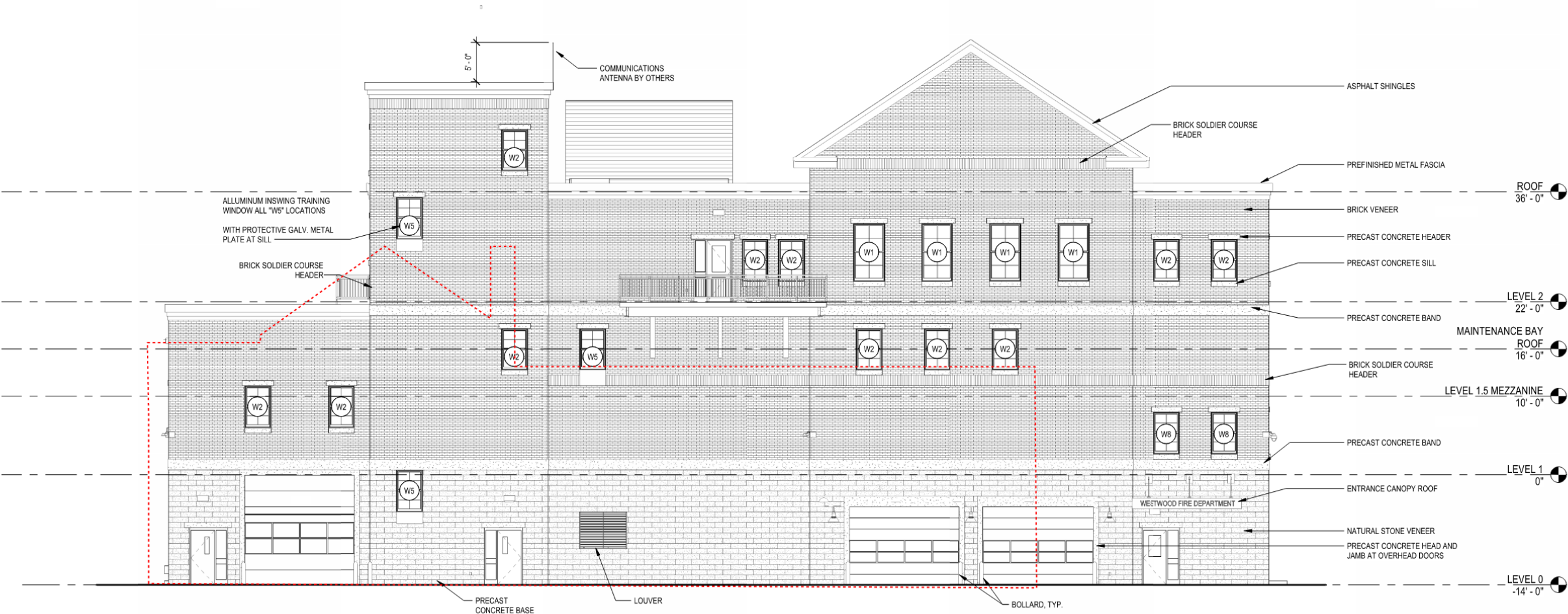


# WESTWOOD FIRE STATION 1



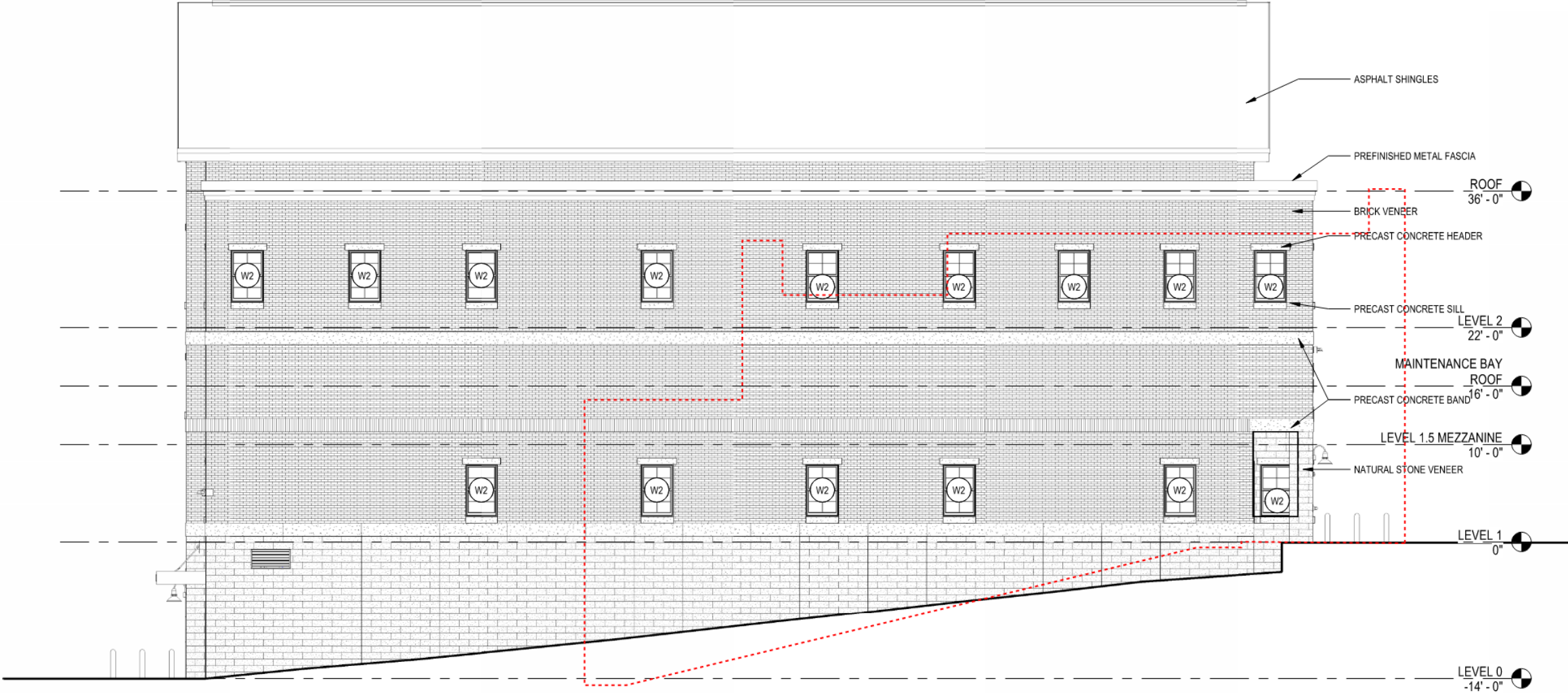
**EAST ELEVATION**

# WESTWOOD FIRE STATION 1



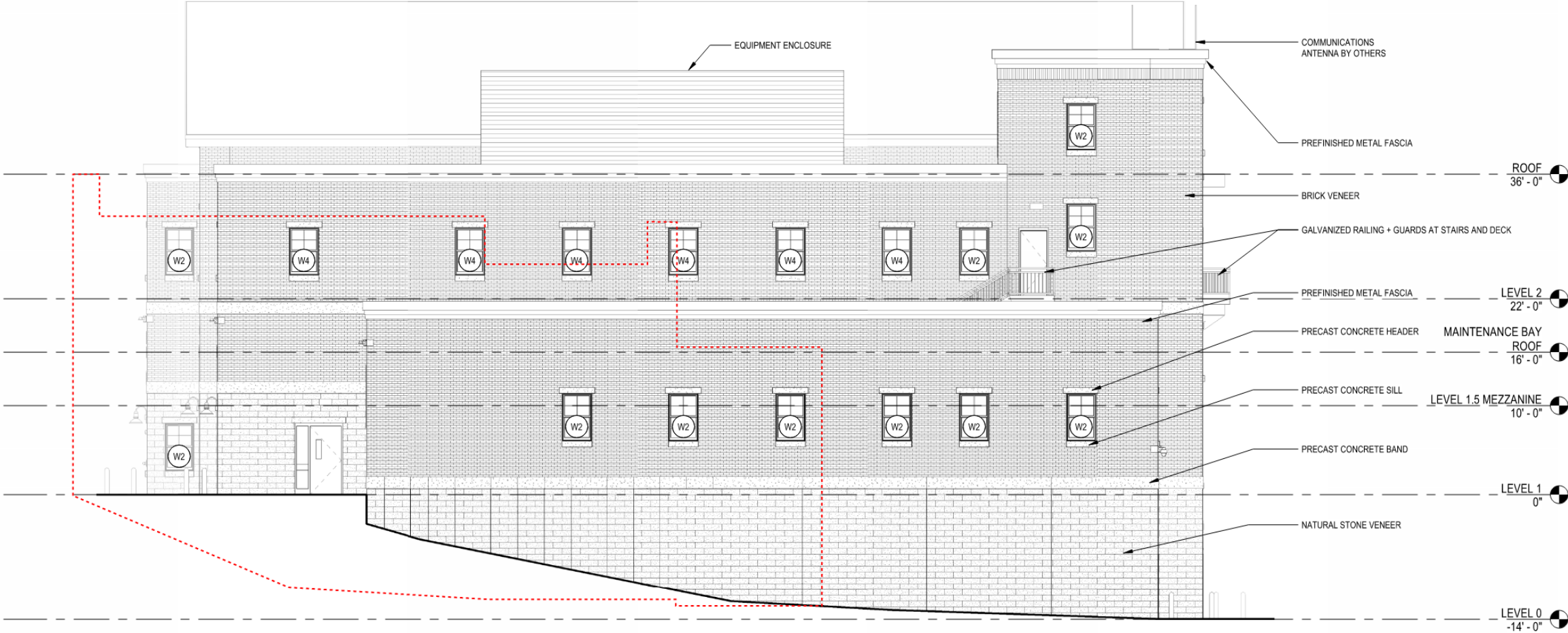
**WEST ELEVATION**

# WESTWOOD FIRE STATION 1



**SOUTH ELEVATION**

# WESTWOOD FIRE STATION 1



**NORTH ELEVATION**

# WESTWOOD FIRE STATION 1



# WESTWOOD FIRE STATION 1





# WESTWOOD FIRE STATION 1



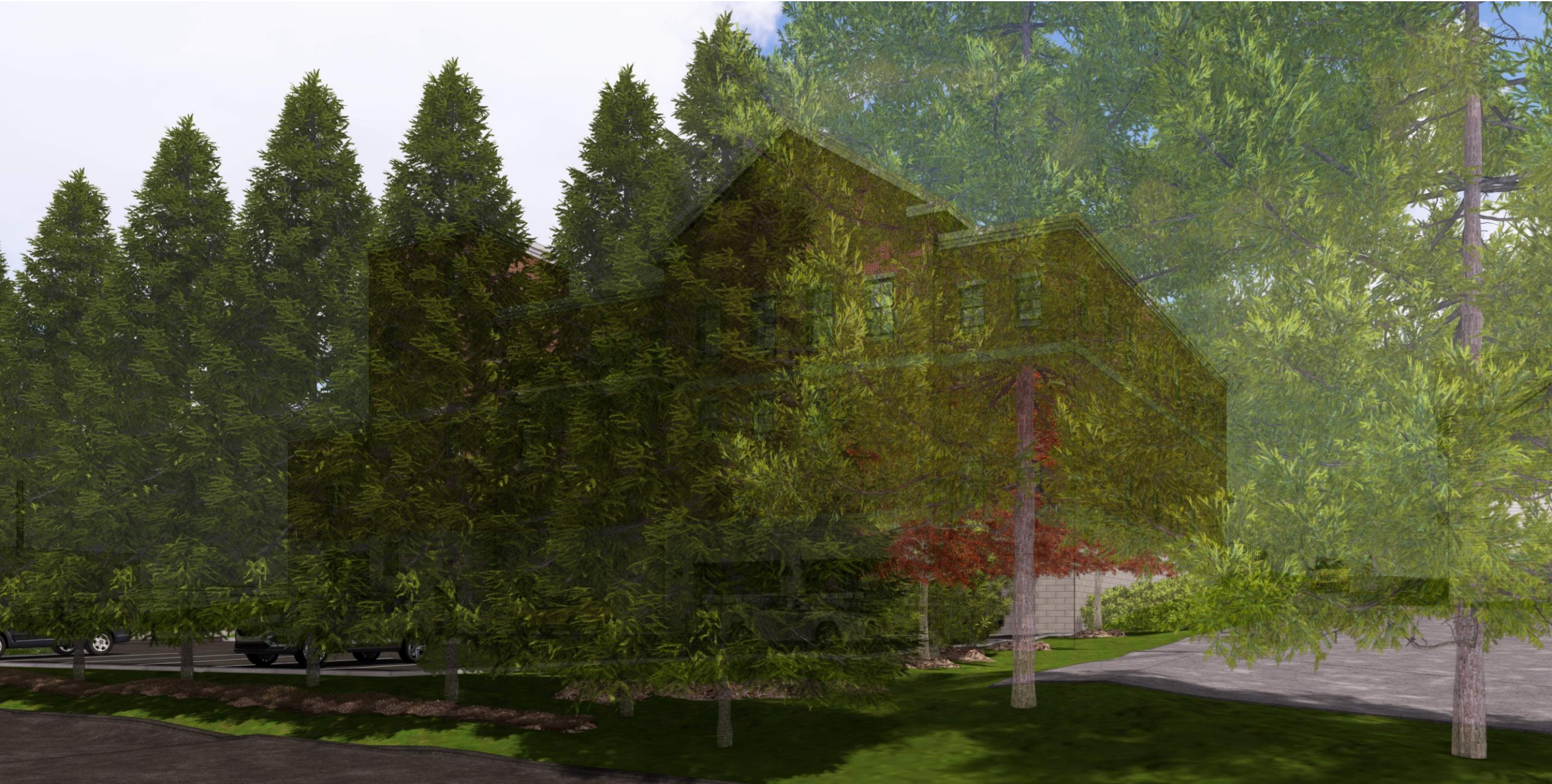
# WESTWOOD FIRE STATION 1



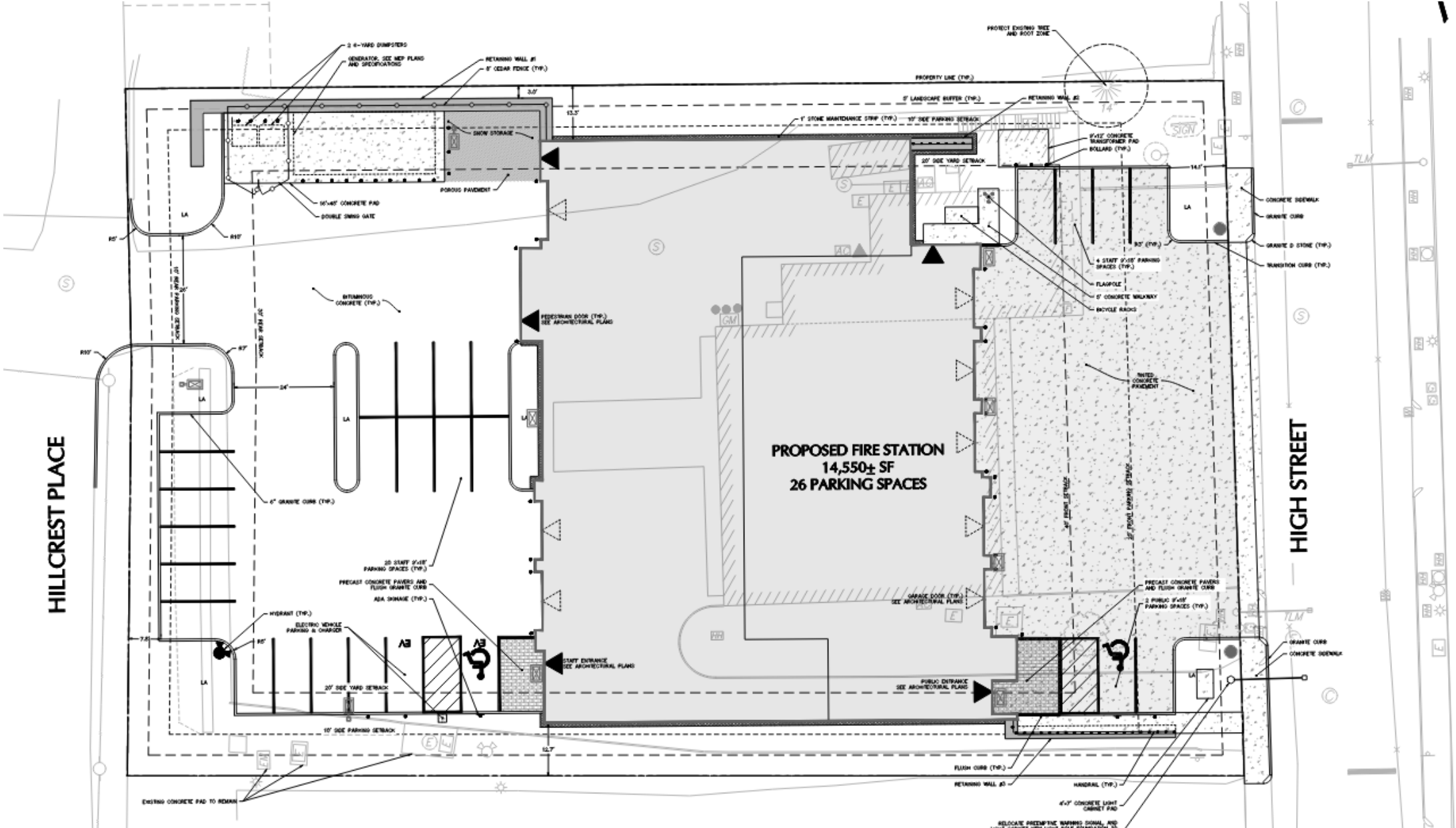
# WESTWOOD FIRE STATION 1



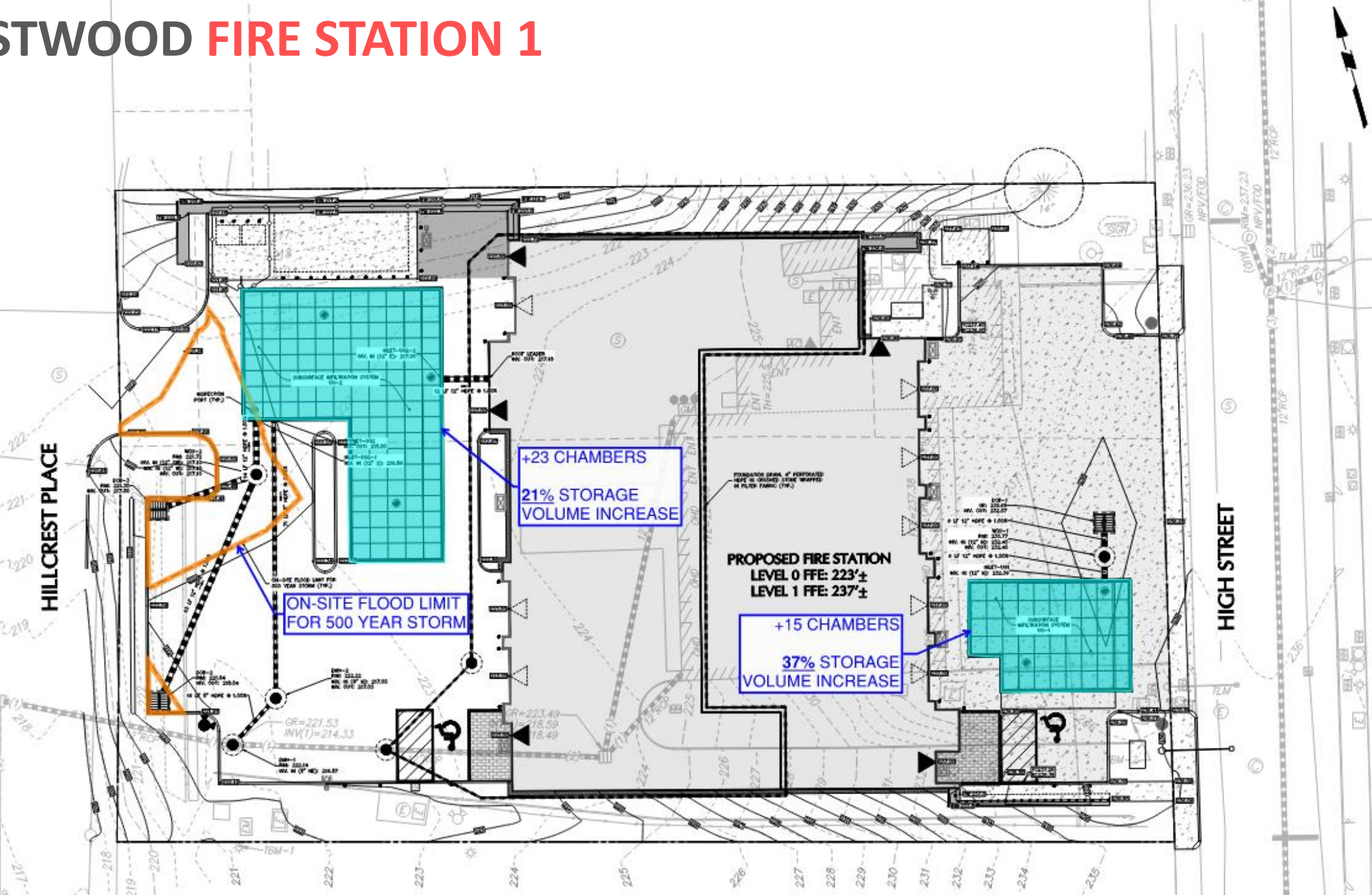
# WESTWOOD FIRE STATION 1



# WESTWOOD FIRE STATION 1



# WESTWOOD FIRE STATION 1



# WESTWOOD FIRE STATION 1

## Rainfall Data

Storm Event	Rainfall Depth
2-year	3.40"
10-year	5.30"
25-year	6.49"
100-year	8.32"
500-year	11.30"

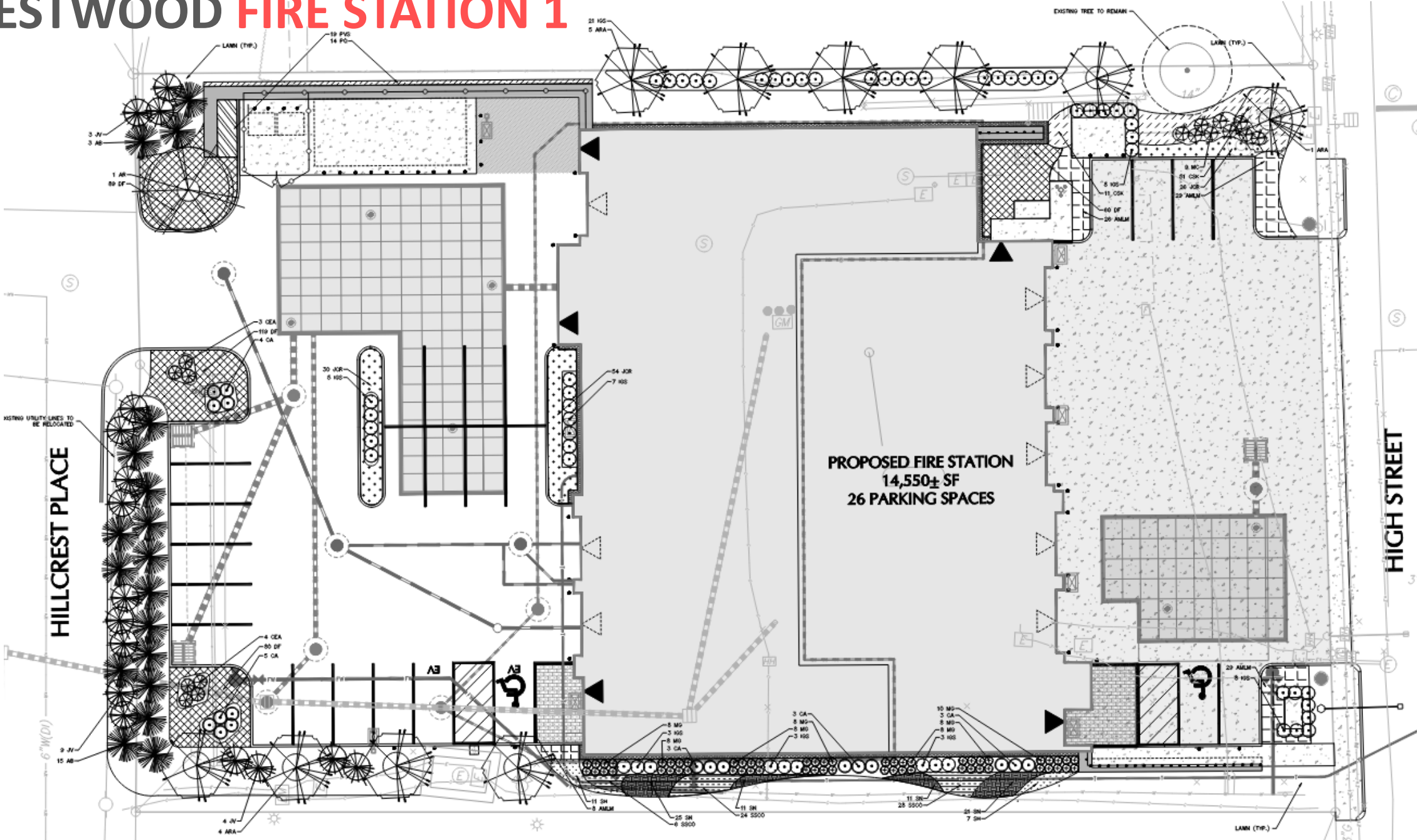
## Peak Flow Comparison

Design Point	Condition	2-year	10-year	25-year	100-year	500-year
<b>A</b> HILLCREST	Pre (cfs)	1.93	3.19	3.97	5.16	7.08
	Post (cfs)	0.00	0.08	0.65	1.47	3.18
	% Delta	-100%	-97%	-84%	-72%	-55%
<b>B</b> HIGH	Pre (cfs)	0.48	0.81	1.02	1.34	1.48
	Post (cfs)	0.01	0.03	0.05	0.08	0.14
	% Delta	-98%	-96%	-95%	-94%	-91%

## Peak Volume Comparison

Design Point	Condition	2-year	10-year	25-year	100-year	500-year
<b>A</b> HILLCREST	Pre (CF)	6,316	10,803	13,591	17,947	25,091
	Post (CF)	44	653	2,614	5,924	11,587
	Delta	-99%	-94%	-81%	-67%	-54%
<b>B</b> HIGH	Pre (CF)	436	1,307	2,178	3,485	6,447
	Post (CF)	44	131	174	261	436
	Delta	-90%	-90%	-92%	-93%	-93%

# WESTWOOD FIRE STATION 1





# WESTWOOD FIRE STATION 1

TREES

Eastern Red Cedar  
*Juniperus virginiana*



Red Maple  
*Acer rubrum*



Red Maple  
*Acer rubrum*



Armstrong Red Maple  
*Acer rubrum*  
'armstrong'



Shenandoah Switchgrass  
*Panicum virgatum*  
'shenandoah'



Little Bluestem  
*Schizachyrium*  
*scoparium*



Virginia Creeper  
*Parthenocissus*  
*quinquefolia*



New York Aster  
*Symphyotrichum*  
*novi-belgii*



ORNAMENTAL GRASSES

VINES

PERENNIAL

# WESTWOOD FIRE STATION 1

SHRUBS

Shamrock Inkberry

*Ilex glabra 'shamrock'*



Common Juniper

*Juniperus communis 'repanda'*



Black Chokeberry

*Aronia melanocarpa 'low scape mound'*



Summersweet Clethra

*Clethra alnifolia*



New Jersey Tea

*Ceanothus americanus*



Kelsey's Dwarf Red-Osier Dogwood

*Cornus sericea 'kelseyi'*



Shrubby Cinquefoil

*Dasiphora floribunda*



Small Bayberry

*Morella caroliniensis*



Sweetgale

*Myrica gale*



# WESTWOOD FIRE STATION 1

## Traffic Recommendations

- “Do Not Block Intersection Markings”
- Adjust signal timing at the intersection of Windsor Road and High Street
- Perform a corridor study along High Street
- Study the feasibility of sidewalks or traffic calming measures on Windsor Road and Hillcrest Place

# WESTWOOD FIRE STATION 1



*Follow Project Updates*

**Thank you!**



