

INSTALL 6 - 6" PVC PIPES  
TYPE EB IN CONCRETE  
SECTION 2 FIG. 5

INSTALL 6 - 6" PVC PIPES  
TYPE EB IN CONCRETE  
SECTION 2 FIG. 5

SHEET1  
SHEET2

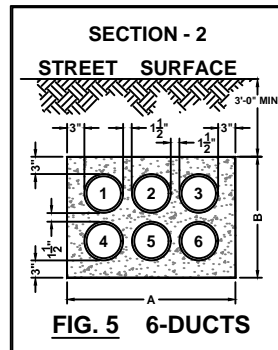
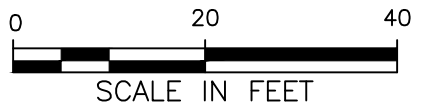


FIG	DIMENSIONS					
	4" Ducts		5" Ducts		6" Ducts	
	A Inches	B Inches	A Inches	B Inches	A Inches	B Inches
1A	10"	10"	11"	11"	12"	12"
1	16 1/2"	10 1/2"	18 1/2"	11 1/2"	21"	12 1/2"
2	22 1/2"	10 1/2"	25 1/2"	11 1/2"	29"	12 1/2"
3	28 1/2"	10 1/2"	32 1/2"	11 1/2"	37"	12 1/2"
4	16 1/2"	16 1/2"	18 1/2"	18 1/2"	21"	21"
5	22 1/2"	16 1/2"	25 1/2"	18 1/2"	29"	21"
6	16 1/2"	22 1/2"	18 1/2"	25 1/2"	21"	29"
7	16 1/2"	28 1/2"	18 1/2"	32 1/2"	21"	37"
8	28 1/2"	16 1/2"	32 1/2"	18 1/2"	37"	21"
9	22 1/2"	22 1/2"	25 1/2"	25 1/2"	29"	29"
10	34 1/2"	16 1/2"	39 1/2"	18 1/2"	45"	21"
11	16 1/2"	34 1/2"	18 1/2"	39 1/2"	21"	45"
12	22 1/2"	28 1/2"	25 1/2"	32 1/2"	29"	37"
13	28 1/2"	22 1/2"	32 1/2"	25 1/2"	37"	29"
14	40 1/2"	16 1/2"	46 1/2"	18 1/2"	53 1/2"	21"
15	16 1/2"	40 1/2"	18 1/2"	46 1/2"	21"	53 1/2"
16	16 1/2"	46 1/2"	18 1/2"	53 1/2"	21"	61"

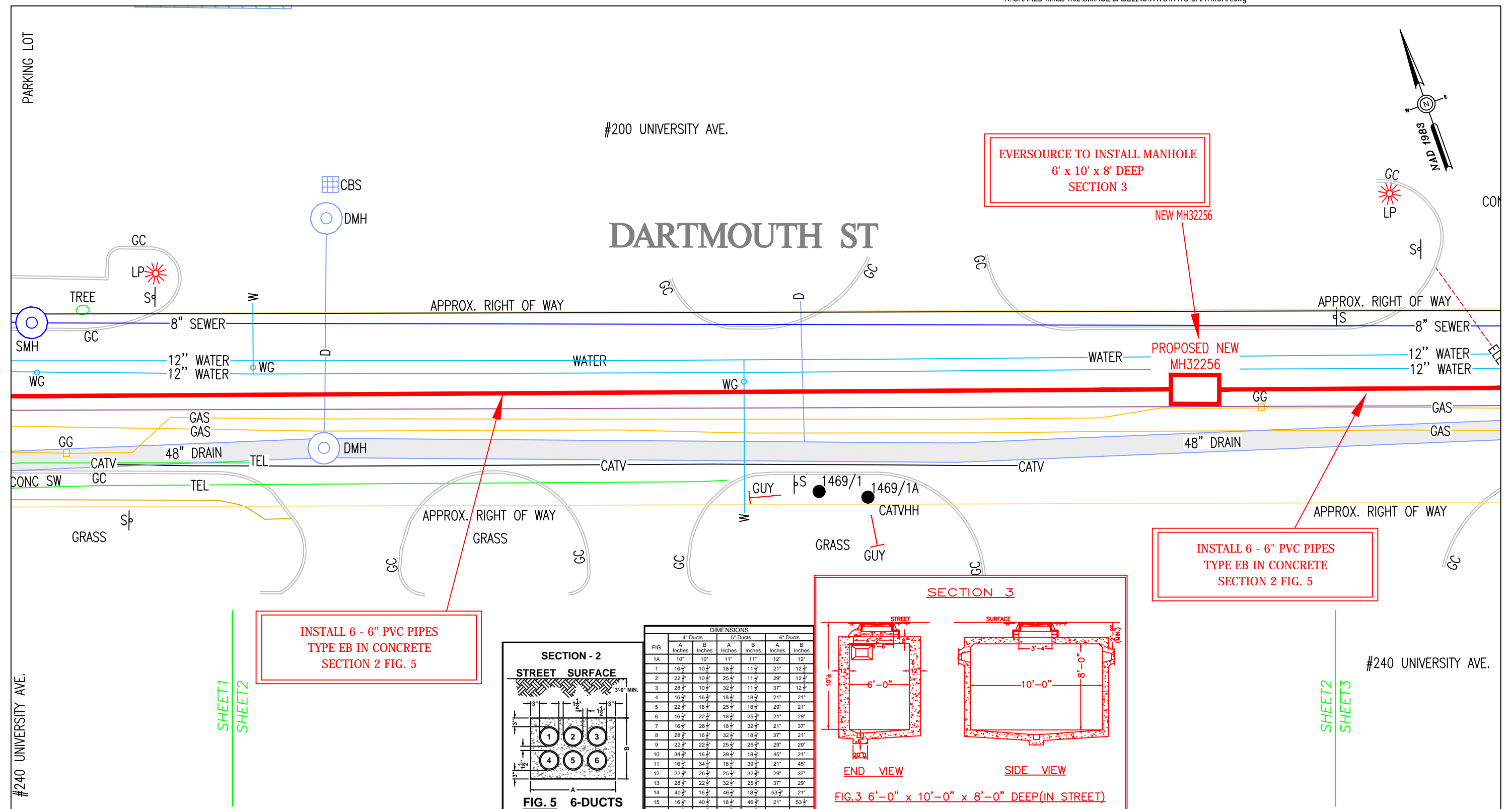


BY YOUR USE OF THE INFORMATION CONTAINED IN THIS MAP, YOU AGREE THAT NO WARRANTY OF ANY KIND, EXPRESS OR IMPLIED, IS GIVEN WITH RESPECT TO THE INFORMATION. NEITHER NSTAR ELECTRIC COMPANY, NSTAR GAS COMPANY NOR ITS PARENTS, AFFILIATES, OFFICERS, DIRECTORS, SHAREHOLDERS, EMPLOYEES OR AGENTS (COLLECTIVELY THE "NSTAR ENTITIES") SHALL BE LIABLE FOR ANY LOSS OR INJURY CAUSED IN WHOLE OR IN PART BY USE OF THIS INFORMATION OR IN RELIANCE UPON IT, TO THE MAXIMUM EXTENT ALLOWED BY LAW. YOU AGREE BY YOUR ACCEPTANCE OF THE INFORMATION TO RELEASE, INDEMNIFY AND HOLD THE NSTAR ENTITIES HARMLESS FROM ANY SUCH LOSS OR INJURY.

THE INFORMATION MAY NOT REPRESENT A SURVEY, MAY NOT BE THE MOST COMPLETE AND IS SUBJECT TO CHANGE WITHOUT NOTICE. NO LIABILITY IS ASSUMED FOR THE ACCURACY OF THE INFORMATION, EITHER EXPRESSED OR IMPLIED. UNAUTHORIZED ATTEMPTS TO MODIFY THE INFORMATION OR USE THE INFORMATION FOR OTHER THAN ITS INTENDED PURPOSES ARE PROHIBITED.

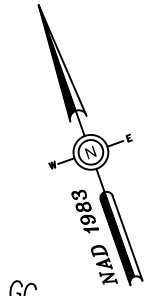
**MASS. LAW**  
REQUIRES 72 HOURS ADVANCE NOTICE TO UTILITY COMPANIES BEFORE DIGGING BY ANYONE. CALL DIG-SAFE 1-888-344-7233

C#	81-23	<b>NSTAR EVERSOURCE</b> ELECTRIC d/b/a 1165 MASSACHUSETTS AVE. DORCHESTER, MASS. 02125
Ward #		
Work Order #	9439998	Plan of #26 DARTMOUTH ST WESTWOOD
Surveyed by:	BP/GC/VT	Showing PROPOSED MANHOLE & CONDUIT LOCATION
Research by:	GR	
Plotted by:	GR	
Proposed Structures:	GR	
Approved:	T THIBAUT	Scale 1"=20'      Date APRIL 5, 2023
P#		SHEET 1 of 3      REV: NOVEMBER 21, 2023



#200 UNIVERSITY AVE.

# DARTMOUTH ST



PARKING LOT

#240 UNIVERSITY AVE.

#240 UNIVERSITY AVE.

SHEET 1  
SHEET 2

SHEET 2  
SHEET 3

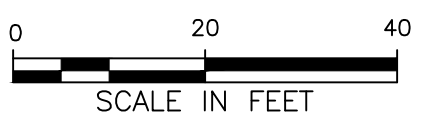


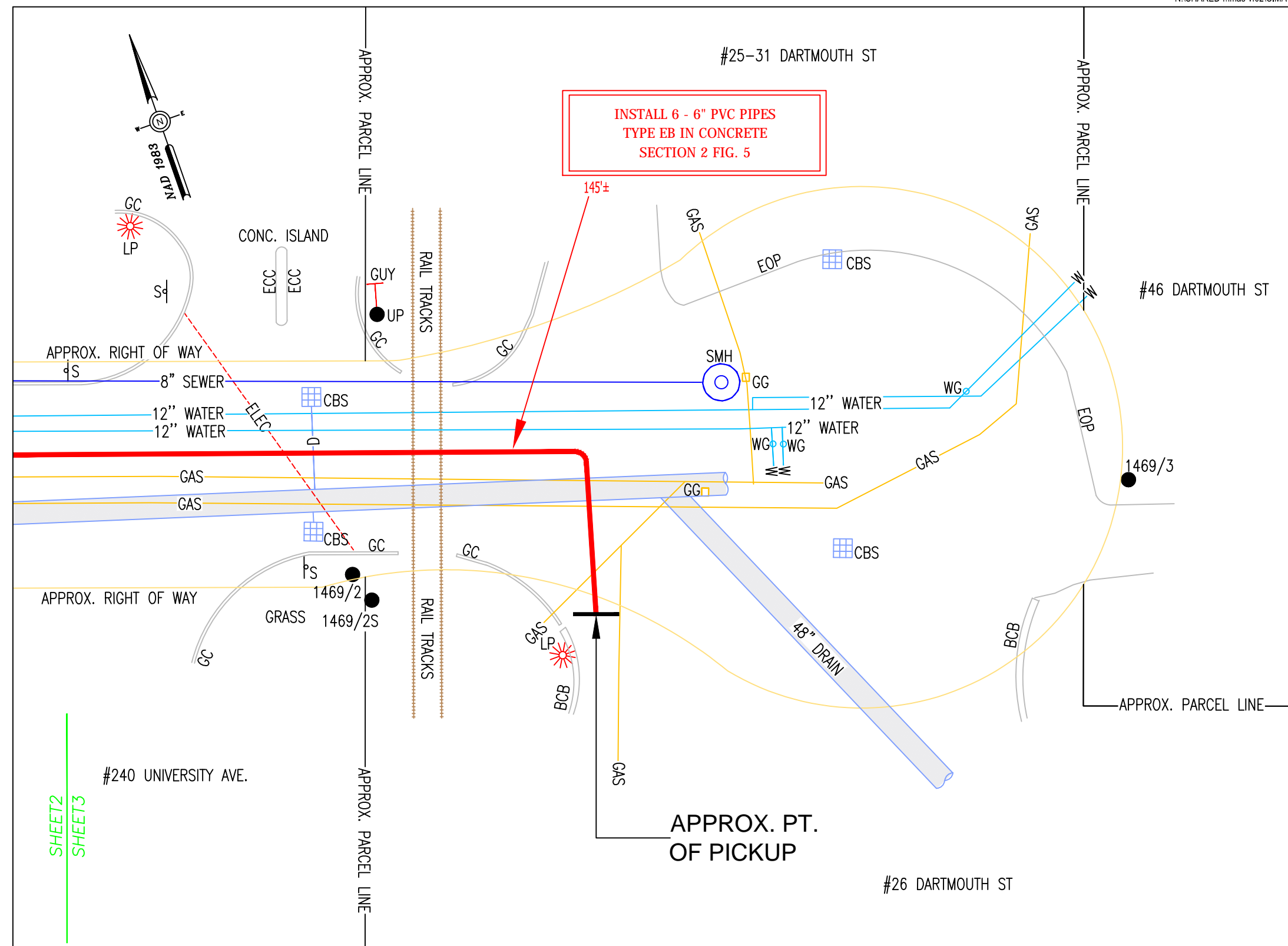
FIG	4" Ducts		5" Ducts		6" Ducts	
	A Inches	B Inches	A Inches	B Inches	A Inches	B Inches
1A	10"	10"	11"	11"	12"	12"
1	16 1/2"	10 1/2"	18 1/2"	11 1/2"	21"	12 1/2"
2	22 1/2"	10 1/2"	25 1/2"	11 1/2"	29"	12 1/2"
3	28 1/2"	10 1/2"	32 1/2"	11 1/2"	37"	12 1/2"
4	16 1/2"	16 1/2"	18 1/2"	18 1/2"	21"	21"
5	22 1/2"	16 1/2"	25 1/2"	18 1/2"	29"	21"
6	16 1/2"	22 1/2"	18 1/2"	25 1/2"	21"	29"
7	16 1/2"	28 1/2"	18 1/2"	32 1/2"	21"	37"
8	28 1/2"	16 1/2"	32 1/2"	18 1/2"	37"	21"
9	22 1/2"	22 1/2"	25 1/2"	25 1/2"	29"	29"
10	34 1/2"	16 1/2"	39 1/2"	18 1/2"	45"	21"
11	16 1/2"	34 1/2"	18 1/2"	39 1/2"	21"	45"
12	22 1/2"	26 1/2"	25 1/2"	32 1/2"	29"	37"
13	28 1/2"	22 1/2"	32 1/2"	25 1/2"	37"	29"
14	40 1/2"	16 1/2"	46 1/2"	18 1/2"	53 1/2"	21"
15	16 1/2"	40 1/2"	18 1/2"	46 1/2"	21"	53 1/2"
16	16 1/2"	46 1/2"	18 1/2"	53 1/2"	21"	61"

BY YOUR USE OF THE INFORMATION CONTAINED IN THIS MAP, YOU AGREE THAT NO WARRANTY OF ANY KIND, EXPRESS OR IMPLIED, IS GIVEN WITH RESPECT TO THE INFORMATION. NEITHER NSTAR ELECTRIC COMPANY, NSTAR GAS COMPANY NOR ITS PARENTS, AFFILIATES, OFFICERS, DIRECTORS, SHAREHOLDERS, EMPLOYEES OR AGENTS (COLLECTIVELY THE "NSTAR ENTITIES") SHALL BE LIABLE FOR ANY LOSS OR INJURY CAUSED IN WHOLE OR IN PART BY USE OF THIS INFORMATION OR IN RELIANCE UPON IT, TO THE MAXIMUM EXTENT ALLOWED BY LAW. YOU AGREE BY YOUR ACCEPTANCE OF THE INFORMATION TO RELEASE, INDEMNIFY AND HOLD THE NSTAR ENTITIES HARMLESS FROM ANY SUCH LOSS OR INJURY.

THE INFORMATION MAY NOT REPRESENT A SURVEY, MAY NOT BE THE MOST COMPLETE AND IS SUBJECT TO CHANGE WITHOUT NOTICE. NO LIABILITY IS ASSUMED FOR THE ACCURACY OF THE INFORMATION, EITHER EXPRESSED OR IMPLIED. UNAUTHORIZED ATTEMPTS TO MODIFY THE INFORMATION OR USE THE INFORMATION FOR OTHER THAN ITS INTENDED PURPOSES ARE PROHIBITED.

**MASS. LAW**  
REQUIRES 72 HOURS ADVANCE NOTICE TO UTILITY COMPANIES  
BEFORE DIGGING BY ANYONE. CALL DIG-SAFE 1-888-344-7233

C#	81-23	<b>NSTAR EVERSOURCE</b> ELECTRIC d/b/a 1165 MASSACHUSETTS AVE. DORCHESTER, MASS. 02125
Ward #		
Work Order #	9439998	Plan of #26 DARTMOUTH ST WESTWOOD
Surveyed by:	BP/GC/VT	Showing PROPOSED MANHOLE & CONDUIT LOCATION
Research by:	GR	
Plotted by:	GR	
Proposed Structures:	GR	
Approved:	T THIBAUT	Scale 1"=20'
P#		Date APRIL 5, 2023
		SHEET 2 of 3
		REV: NOVEMBER 21, 2023



INSTALL 6 - 6" PVC PIPES  
TYPE EB IN CONCRETE  
SECTION 2 FIG. 5

145'±

**SECTION - 2**

**STREET SURFACE**

**FIG. 5 6-DUCTS**

FIG	DIMENSIONS					
	4" Ducts		5" Ducts		6" Ducts	
	A	B	A	B	A	B
1A	10"	10"	11"	11"	12"	12"
1	16 1/2"	10 1/2"	18 1/2"	11 1/2"	21"	12 1/2"
2	22 1/2"	10 1/2"	25 1/2"	11 1/2"	29"	12 1/2"
3	28 1/2"	10 1/2"	32 1/2"	11 1/2"	37"	12 1/2"
4	16 1/2"	16 1/2"	18 1/2"	18 1/2"	21"	21"
5	22 1/2"	16 1/2"	25 1/2"	18 1/2"	29"	21"
6	16 1/2"	22 1/2"	18 1/2"	25 1/2"	21"	29"
7	16 1/2"	28 1/2"	18 1/2"	32 1/2"	21"	37"
8	28 1/2"	16 1/2"	32 1/2"	18 1/2"	37"	21"
9	22 1/2"	22 1/2"	25 1/2"	25 1/2"	29"	29"
10	34 1/2"	16 1/2"	39 1/2"	18 1/2"	45"	21"
11	16 1/2"	34 1/2"	18 1/2"	39 1/2"	21"	45"
12	22 1/2"	26 1/2"	25 1/2"	32 1/2"	29"	37"
13	28 1/2"	22 1/2"	32 1/2"	25 1/2"	37"	29"
14	40 1/2"	16 1/2"	46 1/2"	18 1/2"	53 1/2"	21"
15	16 1/2"	40 1/2"	18 1/2"	46 1/2"	21"	53 1/2"
16	16 1/2"	46 1/2"	18 1/2"	53 1/2"	21"	61"

SHEET 2  
SHEET 3



BY YOUR USE OF THE INFORMATION CONTAINED IN THIS MAP, YOU AGREE THAT NO WARRANTY OF ANY KIND, EXPRESS OR IMPLIED, IS GIVEN WITH RESPECT TO THE INFORMATION. NEITHER NSTAR ELECTRIC COMPANY, NSTAR GAS COMPANY NOR ITS PARENTS, AFFILIATES, OFFICERS, DIRECTORS, SHAREHOLDERS, EMPLOYEES OR AGENTS (COLLECTIVELY THE "NSTAR ENTITIES") SHALL BE LIABLE FOR ANY LOSS OR INJURY CAUSED IN WHOLE OR IN PART BY USE OF THIS INFORMATION OR IN RELIANCE UPON IT, TO THE MAXIMUM EXTENT ALLOWED BY LAW, YOU AGREE BY YOUR ACCEPTANCE OF THE INFORMATION TO RELEASE, INDEMNIFY AND HOLD THE NSTAR ENTITIES HARMLESS FROM ANY SUCH LOSS OR INJURY.

THE INFORMATION MAY NOT REPRESENT A SURVEY, MAY NOT BE THE MOST COMPLETE AND IS SUBJECT TO CHANGE WITHOUT NOTICE. NO LIABILITY IS ASSUMED FOR THE ACCURACY OF THE INFORMATION, EITHER EXPRESSED OR IMPLIED. UNAUTHORIZED ATTEMPTS TO MODIFY THE INFORMATION OR USE THE INFORMATION FOR OTHER THAN ITS INTENDED PURPOSES ARE PROHIBITED.

**MASS. LAW**  
REQUIRES 72 HOURS ADVANCE NOTICE TO UTILITY COMPANIES  
BEFORE DIGGING BY ANYONE. CALL DIG-SAFE 1-888-344-7233

C#	81-23	<b>NSTAR EVERSOURCE</b> <small>ELECTRIC d/b/a</small>
Ward #		
Work Order #	9439998	1165 MASSACHUSETTS AVE. DORCHESTER, MASS. 02125
Surveyed by:	BP/GC/VT	Plan of #26 DARTMOUTH ST
Research by:	GR	WESTWOOD
Plotted by:	GR	Showing PROPOSED MANHOLE & CONDUIT LOCATION
Proposed Structures:	GR	
Approved:	T THIBAUT	Scale 1"=20'
P#		Date APRIL 5, 2023
		REV: NOVEMBER 21, 2023
		SHEET 3 of 3