

APPENDIX D

Manhole Inspection Reports



Associates, Inc.

Manhole Inspection Report

July 2023

Prepared For:

**Environmental
Partners Group**

Services Performed In:

Westwood, MA

Prepared by:

EST Associates Inc.

124 Crescent Road, Needham, MA 02494 Tel:

(781) 455-0003

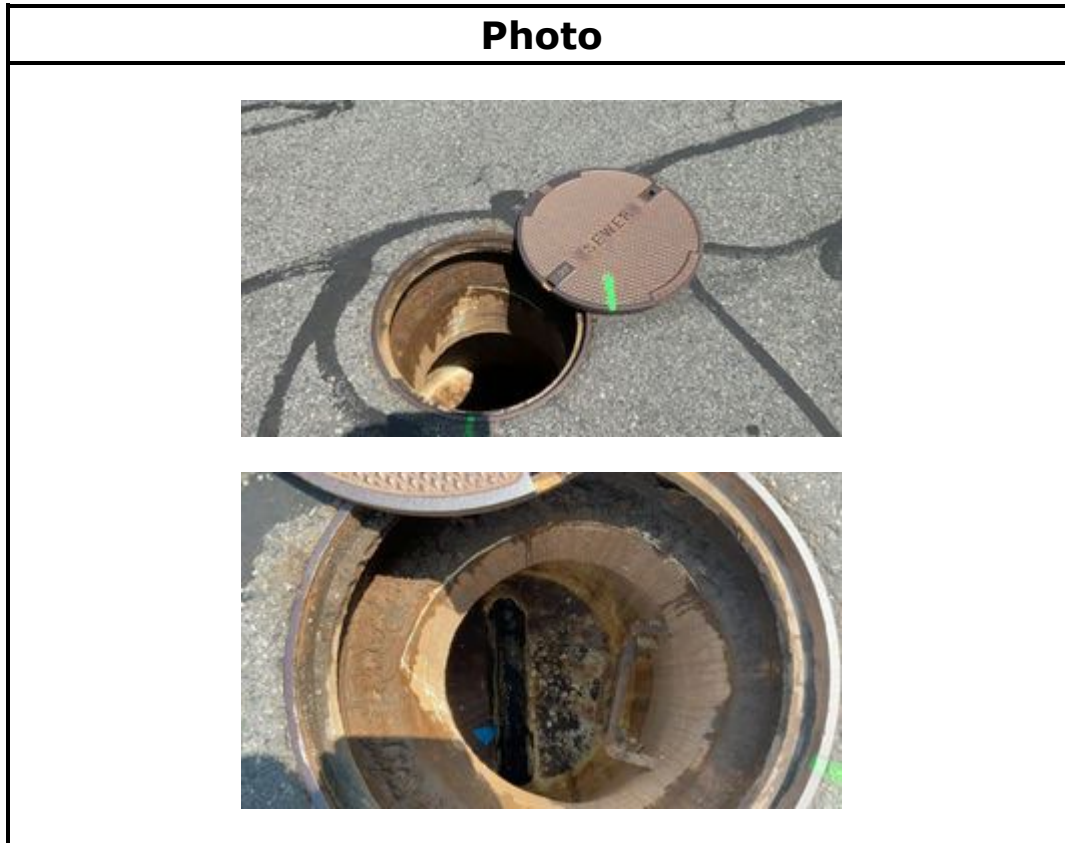
ESTAssociates.com

CODE	DESCRIPTION
B	BROKEN
BSV	BROKEN SOIL VISIBLE
BVV	BROKEN VOID VISIBLE
CC	CRACK CIRCUMFERENTIAL
CL	CRACK LONGITUDINAL
CM	CRACK MULTIPLE
CS	CRACK SPIRAL
DAE	DEPOSITS ATTACHED ENCRUSTATION
DAGS	DEPOSITS ATTACHED GREASE
DAR	DEPOSITS ATTACHED RAGGED
DAZ	DEPOSITS ATTACHED OTHER
DB	DISPLACED BRICK
DI	BRICKWORK DROPPED INVERT
DNF	DEPOSITS INGRESSED FINE
DSC	DEPOSITS SETTLED COMPACTED
DSF	DEPOSITS SETTLED FINE
DSGV	DEPOSITS SETTLED GRAVEL
DSZ	DEPOSITS SETTLED OTHER
FC	FRACTURE CIRCUMFERENTIAL
FL	FRACTURE LONGITUDINAL
FM	FRACTURE MULTIPLE
FS	FRACTURE SPIRAL
H	HOLE
HSV	HOLE SOIL VISIBLE
HVV	HOLE VOID VISIBLE
ID	INFILTRATION DRIPPER
IDB	INFILTRATION DRIPPER BARREL
IDC	INFILTRATION DRIPPER CONNECTION
IDJ	INFILTRATION DRIPPER JOINT
IG	INFILTRATION GUSHER
IGB	INFILTRATION GUSHER BARREL
IGC	INFILTRATION GUSHER CONNECTION
IGJ	INFILTRATION GUSHER JOINT
IR	INFILTRATION RUNNER
IRB	INFILTRATION RUNNER BARREL
IRC	INFILTRATION RUNNER CONNECTION
IRJ	INFILTRATION RUNNER JOINT
IS	INFILTRATION STAIN
ISB	INFILTRATION STAIN BARREL
ISC	INFILTRATION STAIN CONNECTION
ISJ	INFILTRATION STAIN JOINT
ISZ	INTRUDING SEALING MATERIAL OTHER
IW	INFILTRATION WEEPER
IWB	INFILTRATION WEEPER BARREL
IWC	INFILTRATION WEEPER CONNECTION
IWJ	INFILTRATION WEEPER JOINT
IWL	INFILTRATION WEEPER LATERAL

JAL	JOINT ANGULAR LARGE
JAM	JOINT ANGULAR MEDIUM
JOL	JOINT OFFSET LARGE
JOM	JOINT OFFSET MEDIUM
JSL	JOINT SEPERATED LARGE
JSM	JOINT SEPERATED MEDIUM
MB	MISSING BRICK
MML	MISSING MORTAR LARGE
MMM	MISSING MORTAR MEDIUM
MMS	MISSING MORTAR SMALL
MSA	MISCELLANEOUS SURVEY ABANDONED
MWM	MISCELLANEOUS WATER MARK
OBB	OBSTRUCTION BRICK OR MASONRY
OBC	OBSTRUCTION THROUGH CONNECTION
OBI	OBSTRUCTION INTRUDING THROUGH WALL
OBJ	OBSTRUCTION WEDGED IN THE JOINT
OBM	OBSTRUCTION PIPE MATERIAL IN INVERT
OBN	OBSTRUCTION CONSTRUCTION DEBRIS
OBP	OBSTRUCTION EXTERNAL PIPE OR CABLE
OBR	OBSTRUCTION ROCKS
OBS	OBSTRUCTION BUILT INTO STRUCTURE
OBZ	OBSTRUCTION OTHER
RBB	ROOTS BALL BARREL
RBC	ROOTS BALL CONNECTION
RBJ	ROOTS BALL JOINT
RFB	ROOTS FINE BARREL
RFC	ROOTS FINE CONNECTION
RFJ	ROOTS FINE JOINT
RFL	ROOTS FINE LATERAL
RMB	ROOTS MEDIUM BARREL
RMC	ROOTS MEDIUM CONNECTION
RMJ	ROOTS MEDIUM JOINT
RML	ROOTS MEDIUM LATERAL
SAM	SURFACE DAMAGE AGGREGATE MISSING
SAP	SURFACE DAMAGE AGGREGATE PROJECTING
SAV	SURFACE DAMAGE AGGREGATE VISIBLE
SCP	SURFACE DAMAGE CORROSION
SMW	SURFACE DAMAGE MISSING WALL
SRC	SURFACE DAMAGE REINFORCEMENT CORRODED
SRI	SURFACE DAMAGE ROUGHNESS INCREASED
SRP	SURFACE DAMAGE REINFORCEMENT PROJECTING
SRV	SURFACE DAMAGE REINFORCEMENT VISIBLE
SSC	SURFACE SPALLING OF DAMAGE COATING
SSS	SURFACE SPALLING OF DAMAGE
SZ	SURFACE DAMAGE OTHER
VC	VERMIN COCKROACH
VR	VERMIN RAT
VZ	VERMIN OTHER

Westwood, MA Manhole Inspections Manhole ID: 15/051 Westwood, MA

General Information			
Inspectors	BK, TA	Location (Street)	Colburn St. @ Baker St.
Date/Time	July 26, 2023 12:55	Meter Area	



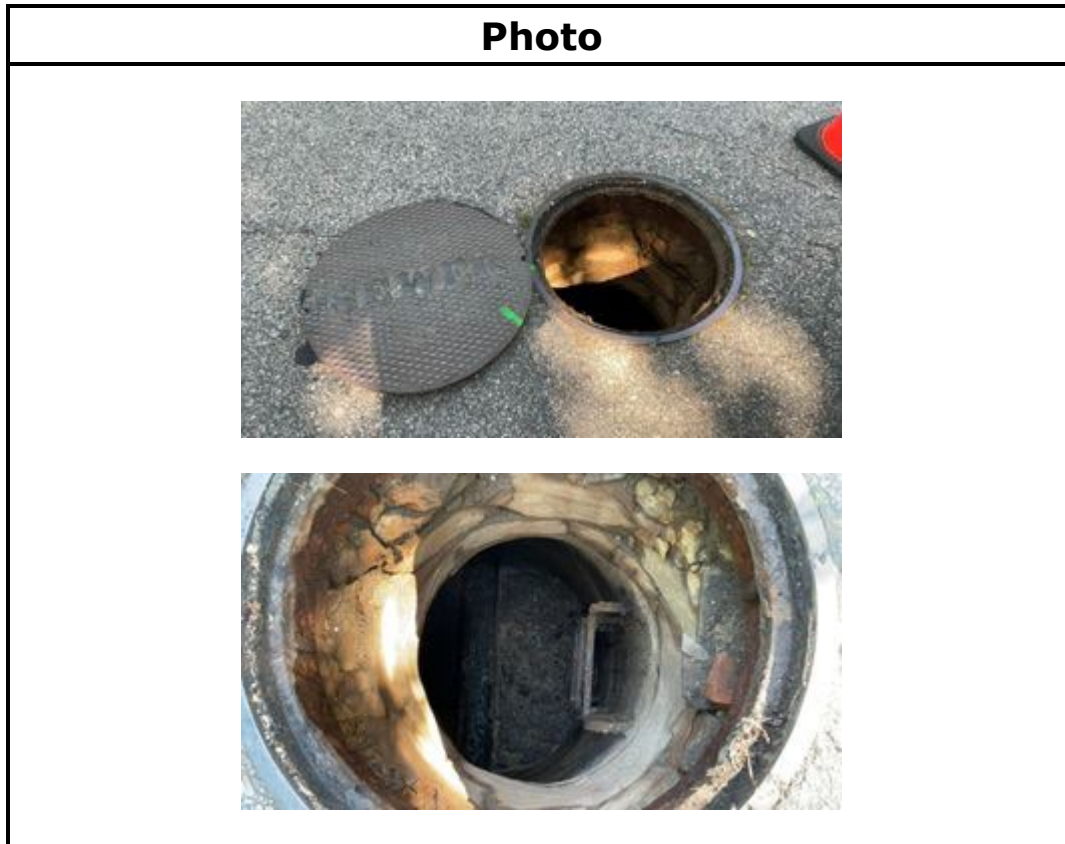
Manhole Information			
Cover Material	Cast Iron	Holes In Cover	No
Cover Condition	Sound	Number of Holes	2
Cover Defects		Hole Size (inches)	0.75
Cover Size (inches)	24	Grade	At Grade
Clear Opening Diameter	22	Surface Materials	Paved
Drainage Area (sqft)	4	Cracked Pavement Surrounding Frame	No
Cover Comments	Blind flanged cover		

Internal Manhole Observations						
Item	Material	Condition	Infiltration?	Infiltration (GPM)	Defects	Comments
Frame	Cast Iron	Sound	No			
Chimney	Lined	Sound	No			
Cone	Lined	Sound	No			
Walls	Lined	Sound	No			
Steps	Present? Yes	# of Steps: 4		Material: Metal		
Bench	Lined	Sound	No			
	Bench Debris Depth (Inches):			Bench Debris:		
Channel	Lined	Sound	No			
	Channel Debris Depth (Inches):			Channel Debris:		
Surcharge from Invert Evident? No				Currently:		Marks To:
Additional Comments:						

Line Conditions												
In/Out	Compass Direction	Pipe Size	Pipe Material	Rim to Invert Depth	Condition	Flow Depth	Defects	Infiltration	Infiltration (GPM)	Debris	Debris Depth	Debris Material
Out	15/052	8"	Lined	7'7"	Sound	0.25"	No	No	N/A	No	N/A	N/A
In	15/050	8"	ACP	7'6"	Sound	0.25"	No	No	N/A	No	N/A	N/A
Additional Comments:												

Westwood, MA Manhole Inspections
Manhole ID: 15/073
Westwood, MA

General Information			
Inspectors	BK, TA	Location (Street)	24 Wellington Dr.
Date/Time	July 31, 2023 09:58	Meter Area	



Manhole Information			
Cover Material	Cast Iron	Holes In Cover	Yes
Cover Condition	Sound	Number of Holes	2
Cover Defects		Hole Size (inches)	0.75
Cover Size (inches)	26	Grade	At Grade
Clear Opening Diameter	24	Surface Materials	Paved
Drainage Area (sqft)	4	Cracked Pavement Surrounding Frame	Yes
Cover Comments			



Associates, Inc.

Environmental Monitoring
Pipeline Services
Operations & Maintenance

Internal Manhole Observations						
Item	Material	Condition	Infiltration?	Infiltration (GPM)	Defects	Comments
Frame	Cast Iron	Sound	No			
Chimney	Brick, Parged	Defective	No		MML, MB, HSV	
Cone	Precast	Sound	No			
Walls	Precast, Parged	Sound	No			
Steps	Present? Yes	# of Steps: 4		Material: Metal		
Bench	Brick, Parged	Sound	No			
	Bench Debris Depth (Inches): 3			Bench Debris: Sediment		
Channel	Brick, Parged	Sound	No			
	Channel Debris Depth (Inches): 2			Channel Debris: Sediment		
Surcharge from Invert Evident? No				Currently:		Marks To:
Additional Comments:						

Line Conditions												
In/Out	Compass Direction	Pipe Size	Pipe Material	Rim to Invert Depth	Condition	Flow Depth	Defects	Infiltration	Infiltration (GPM)	Debris	Debris Depth	Debris Material
Out	15/072	8"	ACP	7'7"	Sound	0	No	No	N/A	Yes	0.5"	Sediment
Additional Comments:												

Westwood, MA Manhole Inspections
Manhole ID: 15/070
Westwood, MA

General Information			
Inspectors	BK, TA	Location (Street)	100 Wagon Rd.
Date/Time	July 31, 2023 09:45	Meter Area	



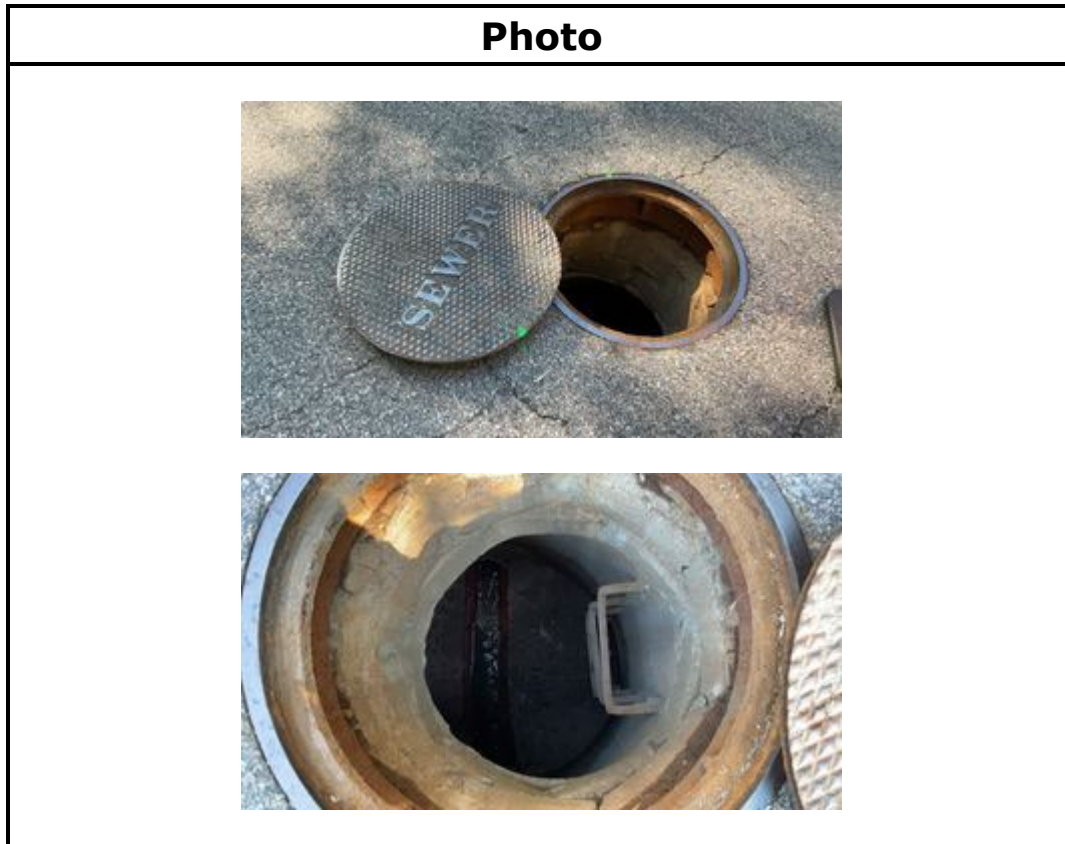
Manhole Information			
Cover Material	Cast Iron	Holes In Cover	Yes
Cover Condition	Sound	Number of Holes	2
Cover Defects		Hole Size (inches)	0.75
Cover Size (inches)	24	Grade	At Grade
Clear Opening Diameter	22	Surface Materials	Paved
Drainage Area (sqft)	4	Cracked Pavement Surrounding Frame	Yes
Cover Comments			

Internal Manhole Observations						
Item	Material	Condition	Infiltration?	Infiltration (GPM)	Defects	Comments
Frame	Cast Iron	Sound	No			
Chimney	Brick, Parged	Defective	No		MML, MB, HSV	
Cone	Parged	Sound	No			
Walls	Parged	Sound	No			
Steps	Present? Yes	# of Steps: 7		Material: Metal		
Bench	Parged	Sound	No			
	Bench Debris Depth (Inches):			Bench Debris:		
Channel	Brick	Sound	No			
	Channel Debris Depth (Inches): 0.5			Channel Debris: Sanitary		
Surcharge from Invert Evident? No				Currently:	Marks To:	
Additional Comments:						

Line Conditions												
In/Out	Compass Direction	Pipe Size	Pipe Material	Rim to Invert Depth	Condition	Flow Depth	Defects	Infiltration	Infiltration (GPM)	Debris	Debris Depth	Debris Material
Out	15/071	8"	ACP	10'10"	Sound	0.1"	No	No	N/A	No	N/A	N/A
In	Northwest	8"	ACP	9'11"	Sound	0.1"	No	No	N/A	No	N/A	N/A
Additional Comments:												

Westwood, MA Manhole Inspections
Manhole ID: 15/075
Westwood, MA

General Information			
Inspectors	BK, TA	Location (Street)	50 Wagon Rd.
Date/Time	July 31, 2023 08:31	Meter Area	



Manhole Information			
Cover Material	Cast Iron	Holes In Cover	No
Cover Condition	Sound	Number of Holes	
Cover Defects		Hole Size (inches)	
Cover Size (inches)	24	Grade	At Grade
Clear Opening Diameter	22	Surface Materials	Paved
Drainage Area (sqft)	4	Cracked Pavement Surrounding Frame	Yes
Cover Comments			

Internal Manhole Observations						
Item	Material	Condition	Infiltration?	Infiltration (GPM)	Defects	Comments
Frame	Cast Iron	Sound	No			
Chimney	Brick, Block	Defective	No		MML	
Cone	Precast	Defective	No		Lift holes missing mortar	
Walls	Precast	Sound	No			
Steps	Present? Yes	# of Steps: 4		Material: Metal		
Bench	Brick	Sound	No			
	Bench Debris Depth (Inches): 1			Bench Debris: Sediment		
Channel	Brick	Sound	No			
	Channel Debris Depth (Inches):			Channel Debris:		
Surcharge from Invert Evident? No				Currently:	Marks To:	
Additional Comments:						

Line Conditions												
In/Out	Compass Direction	Pipe Size	Pipe Material	Rim to Invert Depth	Condition	Flow Depth	Defects	Infiltration	Infiltration (GPM)	Debris	Debris Depth	Debris Material
Out	15/076	8"	ACP	7'3"	Sound	0.5"	No	No	N/A	No	N/A	N/A
In	15/074	8"	ACP	7'2"	Sound	0.5"	No	No	N/A	No	N/A	N/A
Additional Comments:												

Westwood, MA Manhole Inspections Manhole ID: 15/078 Westwood, MA

General Information			
Inspectors	BK, TA	Location (Street)	Olde Carriage Rd. @ Wagon Rd.
Date/Time	July 31, 2023 07:26	Meter Area	



Manhole Information			
Cover Material	Cast Iron	Holes In Cover	Yes
Cover Condition	Sound	Number of Holes	2
Cover Defects		Hole Size (inches)	0.75
Cover Size (inches)	26	Grade	At Grade
Clear Opening Diameter	24	Surface Materials	Paved
Drainage Area (sqft)	4	Cracked Pavement Surrounding Frame	Yes
Cover Comments			



Associates, Inc.

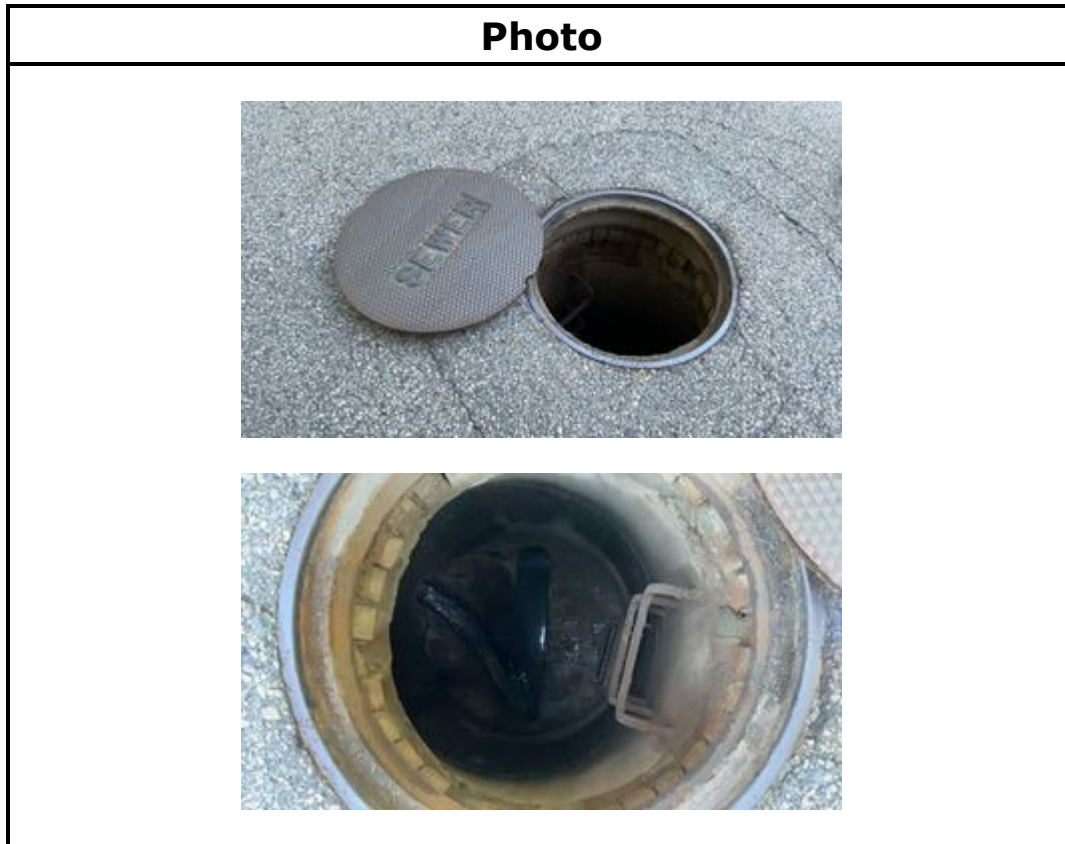
Environmental Monitoring
Pipeline Services
Operations & Maintenance

Internal Manhole Observations						
Item	Material	Condition	Infiltration?	Infiltration (GPM)	Defects	Comments
Frame	Cast Iron	Sound	No			
Chimney	Brick	Defective	No		MML, MB, HSV	
Cone	Precast	Sound	No			
Walls	Precast	Sound	No			
Steps	Present? Yes	# of Steps: 3		Material: Metal		
Bench	Brick	Sound	No			
	Bench Debris Depth (Inches): 2			Bench Debris: Sanitary, Sediment		
Channel	Brick	Sound	No			
	Channel Debris Depth (Inches):			Channel Debris:		
Surcharge from Invert Evident? No				Currently:		Marks To:
Additional Comments:						

Line Conditions												
In/Out	Compass Direction	Pipe Size	Pipe Material	Rim to Invert Depth	Condition	Flow Depth	Defects	Infiltration	Infiltration (GPM)	Debris	Debris Depth	Debris Material
Out	15/061	8"	ACP	6'0"	Sound	2"	No	No	N/A	No	N/A	N/A
In	15/077	8"	ACP	5'11"	Sound	1.5"	No	No	N/A	No	N/A	N/A
In	15/079	8"	ACP	5'11"	Sound	0.5"	No	No	N/A	No	N/A	N/A
Additional Comments:												

Westwood, MA Manhole Inspections
Manhole ID: 15/061
Westwood, MA

General Information			
Inspectors	BK, TA	Location (Street)	28 Olde Carriage Rd.
Date/Time	July 31, 2023 07:13	Meter Area	



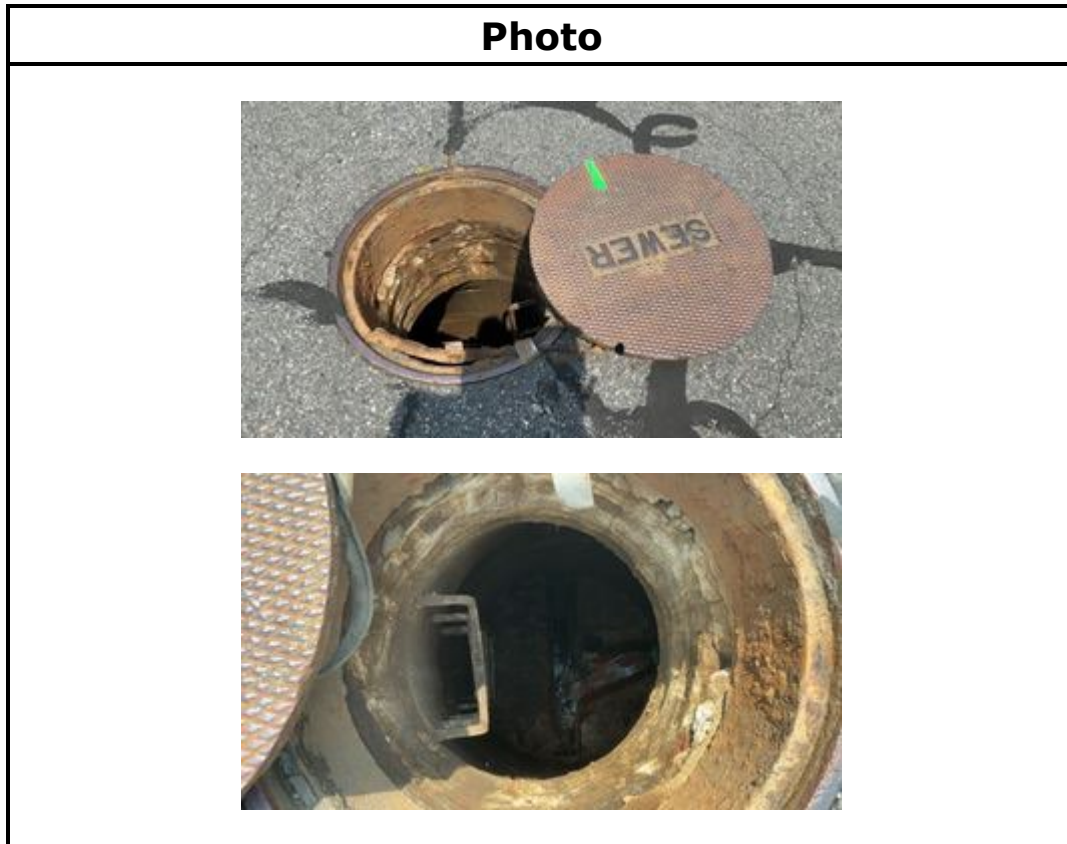
Manhole Information			
Cover Material	Cast Iron	Holes In Cover	Yes
Cover Condition	Sound	Number of Holes	2
Cover Defects		Hole Size (inches)	0.75
Cover Size (inches)	26	Grade	At Grade
Clear Opening Diameter	24	Surface Materials	Paved
Drainage Area (sqft)	4	Cracked Pavement Surrounding Frame	Yes
Cover Comments			

Internal Manhole Observations						
Item	Material	Condition	Infiltration?	Infiltration (GPM)	Defects	Comments
Frame	Cast Iron	Sound	No			
Chimney	Brick, Block	Defective	No		MML, MB	
Cone	Precast	Sound	No			
Walls	Precast	Sound	No			
Steps	Present? Yes	# of Steps: 6		Material: Metal		
Bench	Brick, Parged	Sound	No			
	Bench Debris Depth (Inches):			Bench Debris:		
Channel	Brick, Parged	Sound	No			
	Channel Debris Depth (Inches):			Channel Debris:		
Surcharge from Invert Evident? No				Currently:	Marks To:	
Additional Comments:						

Line Conditions												
In/Out	Compass Direction	Pipe Size	Pipe Material	Rim to Invert Depth	Condition	Flow Depth	Defects	Infiltration	Infiltration (GPM)	Debris	Debris Depth	Debris Material
Out	15/092	8"	ACP	8'8"	Sound	3.5"	No	No	N/A	No	N/A	N/A
In	15/078	8"	ACP	7'6"	Sound	1"	No	No	N/A	No	N/A	N/A
In	15/060	8"	ACP	8'7"	Sound	2.5"	No	No	N/A	No	N/A	N/A
Additional Comments:												

Westwood, MA Manhole Inspections
Manhole ID: 15/035
Westwood, MA

General Information			
Inspectors	BK, TA	Location (Street)	4 Short St.
Date/Time	July 27, 2023 13:14	Meter Area	



Manhole Information			
Cover Material	Cast Iron	Holes In Cover	Yes
Cover Condition	Sound	Number of Holes	2
Cover Defects		Hole Size (inches)	0.75
Cover Size (inches)	26	Grade	At Grade
Clear Opening Diameter	24	Surface Materials	Paved
Drainage Area (sqft)	4	Cracked Pavement Surrounding Frame	No
Cover Comments			

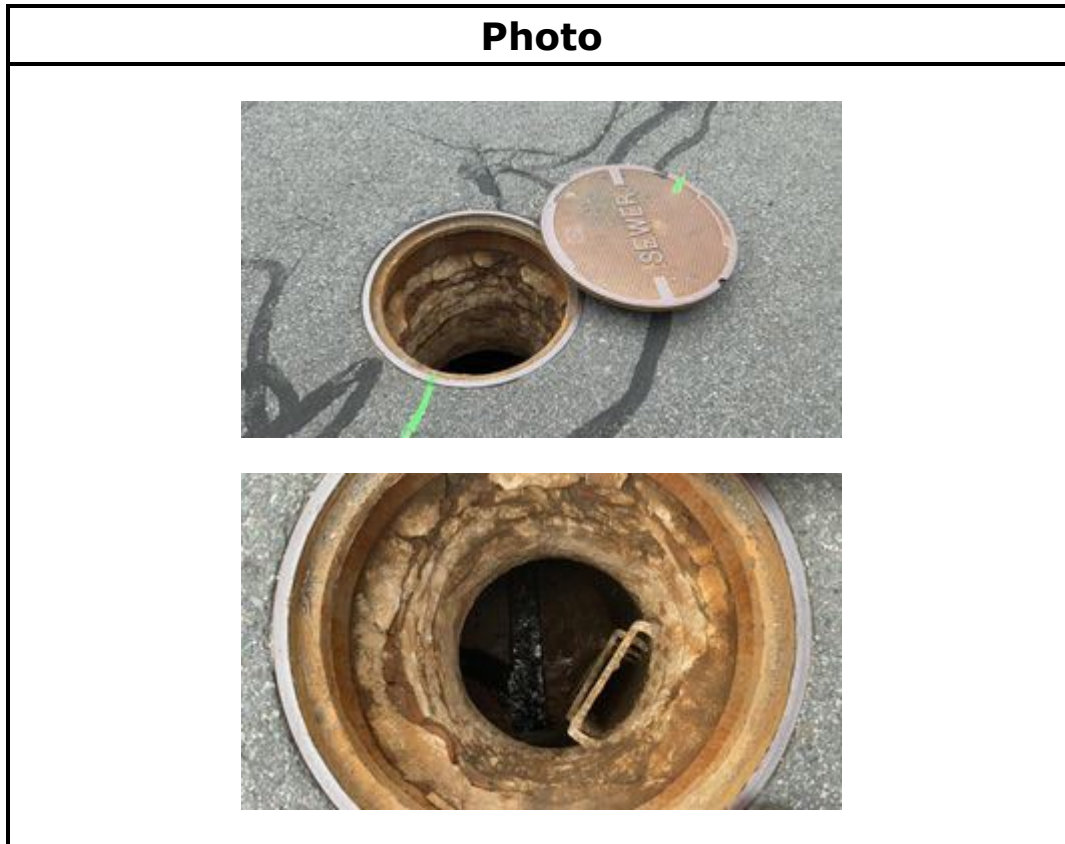


Internal Manhole Observations						
Item	Material	Condition	Infiltration?	Infiltration (GPM)	Defects	Comments
Frame	Cast Iron	Sound	No			
Chimney	Brick, Parged	Sound	No			
Cone	Precast	Defective	No		lift holes missing mortar	
Walls	Precast	Sound	No			
Steps	Present? Yes	# of Steps: 6		Material: Metal		
Bench	Brick, Parged	Sound	No			
	Bench Debris Depth (Inches): 0.5			Bench Debris: Sediment		
Channel	Brick	Defective	No		DAGS	
	Channel Debris Depth (Inches): 2			Channel Debris: Other Grease		
Surcharge from Invert Evident? No				Currently:		Marks To:
Additional Comments:						

Line Conditions												
In/Out	Compass Direction	Pipe Size	Pipe Material	Rim to Invert Depth	Condition	Flow Depth	Defects	Infiltration	Infiltration (GPM)	Debris	Debris Depth	Debris Material
Out	15/034	8"	ACP	9'2"	Sound	0.5"	No	No	N/A	No	N/A	N/A
In	Northwest	6"	PVC	9'0"	Sound	0.5"	No	No	N/A	No	N/A	N/A
Additional Comments:												

Westwood, MA Manhole Inspections Manhole ID: 15/034 Westwood, MA

General Information			
Inspectors	BK, TA	Location (Street)	168 Fisher St.
Date/Time	July 27, 2023 13:03	Meter Area	



Manhole Information			
Cover Material	Cast Iron	Holes In Cover	Yes
Cover Condition	Sound	Number of Holes	2
Cover Defects		Hole Size (inches)	0.75
Cover Size (inches)	26	Grade	At Grade
Clear Opening Diameter	24	Surface Materials	Paved
Drainage Area (sqft)	4	Cracked Pavement Surrounding Frame	Yes
Cover Comments			

Internal Manhole Observations						
Item	Material	Condition	Infiltration?	Infiltration (GPM)	Defects	Comments
Frame	Cast Iron	Sound	No			
Chimney	Brick, Parged	Defective	No		MMM	
Cone	Precast	Sound	No			
Walls	Precast	Sound	No			
Steps	Present? Yes	# of Steps: 6		Material: Metal		
Bench	Brick, Parged	Sound	No			
	Bench Debris Depth (Inches):			Bench Debris:		
Channel	Brick	Sound	No			
	Channel Debris Depth (Inches): 0.5			Channel Debris: Sediment		
Surcharge from Invert Evident? No				Currently:	Marks To:	
Additional Comments:						

Line Conditions												
In/Out	Compass Direction	Pipe Size	Pipe Material	Rim to Invert Depth	Condition	Flow Depth	Defects	Infiltration	Infiltration (GPM)	Debris	Debris Depth	Debris Material
Out	15/036	8"	ACP	9'4"	Sound	4"	No	No	N/A	No	N/A	N/A
In	15/035	8"	ACP	9'3"	Sound	0.5"	No	No	N/A	Yes	0.5"	Sediment
In	15/033	8"	ACP	9'3"	Sound	3.5"	No	No	N/A	No	N/A	N/A
Additional Comments:												

Westwood, MA Manhole Inspections Manhole ID: 15/033 Westwood, MA

General Information			
Inspectors	BK, TA	Location (Street)	Fisher St. @ French St.
Date/Time	July 27, 2023 12:55	Meter Area	



Manhole Information			
Cover Material	Cast Iron	Holes In Cover	No
Cover Condition	Sound	Number of Holes	2
Cover Defects		Hole Size (inches)	0.75
Cover Size (inches)	24	Grade	At Grade
Clear Opening Diameter	22	Surface Materials	Paved
Drainage Area (sqft)	4	Cracked Pavement Surrounding Frame	No
Cover Comments	Blind flange cover		

Internal Manhole Observations						
Item	Material	Condition	Infiltration?	Infiltration (GPM)	Defects	Comments
Frame	Cast Iron	Sound	No			
Chimney	Parged	Sound	No			
Cone	Precast, Parged	Sound	No			
Walls	Precast, Parged	Sound	No			
Steps	Present? Yes	# of Steps: 9		Material: Metal		
Bench	Parged	Sound	No			
	Bench Debris Depth (Inches):			Bench Debris:		
Channel	Parged	Sound	No			
	Channel Debris Depth (Inches):			Channel Debris:		
Surcharge from Invert Evident? No				Currently:	Marks To:	
Additional Comments:						

Line Conditions												
In/Out	Compass Direction	Pipe Size	Pipe Material	Rim to Invert Depth	Condition	Flow Depth	Defects	Infiltration	Infiltration (GPM)	Debris	Debris Depth	Debris Material
Out	15/034	8"	ACP	12'2"	Sound	3"	No	No	N/A	No	N/A	N/A
In	15/048	8"	ACP	6'3"	Sound	1.5"	No	No	N/A	No	N/A	N/A
In	15/032	8"	ACP	6'8"	Sound	0.5"	No	No	N/A	No	N/A	N/A
In	15/024	8"	ACP	12'1"	Sound	2"	No	No	N/A	No	N/A	N/A
Additional Comments: In (15/048) is an outside drop. In (15/032) is an outside drop.												

Westwood, MA Manhole Inspections Manhole ID: 15/032 Westwood, MA

General Information			
Inspectors	BK, TA	Location (Street)	135 Fisher St.
Date/Time	July 27, 2023 12:50	Meter Area	



Manhole Information			
Cover Material	Cast Iron	Holes In Cover	Yes
Cover Condition	Sound	Number of Holes	2
Cover Defects		Hole Size (inches)	0.75
Cover Size (inches)	26	Grade	At Grade
Clear Opening Diameter	24	Surface Materials	Paved
Drainage Area (sqft)	4	Cracked Pavement Surrounding Frame	Yes
Cover Comments			



Internal Manhole Observations						
Item	Material	Condition	Infiltration?	Infiltration (GPM)	Defects	Comments
Frame	Cast Iron	Sound	No			
Chimney	Brick, Parged	Sound	No			
Cone	Brick, Parged	Sound	No			
Walls	Brick, Parged	Sound	No			
Steps	Present? Yes	# of Steps: 2		Material: Metal		
Bench	Brick, Parged	Sound	No			
	Bench Debris Depth (Inches): 0.25			Bench Debris: Sediment		
Channel	Brick	Sound	No			
	Channel Debris Depth (Inches):			Channel Debris:		
Surcharge from Invert Evident? No				Currently:		Marks To:
Additional Comments:						

Line Conditions												
In/Out	Compass Direction	Pipe Size	Pipe Material	Rim to Invert Depth	Condition	Flow Depth	Defects	Infiltration	Infiltration (GPM)	Debris	Debris Depth	Debris Material
Out	15/033	8"	ACP	6'4"	Sound	0.25"	No	No	N/A	No	N/A	N/A
In	15/031	8"	ACP	5'6"	Sound	0.25"	No	No	N/A	No	N/A	N/A
Additional Comments:												

Westwood, MA Manhole Inspections
Manhole ID: 15/030
Westwood, MA

General Information			
Inspectors	BK, TA	Location (Street)	120 Fisher St.
Date/Time	July 27, 2023 12:33	Meter Area	



Manhole Information			
Cover Material	Cast Iron	Holes In Cover	Yes
Cover Condition	Sound	Number of Holes	2
Cover Defects		Hole Size (inches)	0.75
Cover Size (inches)	26	Grade	At Grade
Clear Opening Diameter	24	Surface Materials	Paved
Drainage Area (sqft)	4	Cracked Pavement Surrounding Frame	No
Cover Comments			

Internal Manhole Observations												
Item	Material	Condition	Infiltration?	Infiltration (GPM)	Defects	Comments						
Frame	Cast Iron	Sound	No			Frame accommodates a flood cover however no flood cover installed						
Chimney	Brick, Precast, Parged	Sound	No									
Cone	Precast, Parged	Sound	No									
Walls	Precast, Parged	Sound	No									
Steps	Present? Yes	# of Steps: 5		Material: Metal								
Bench	Brick, Parged	Sound	No									
	Bench Debris Depth (Inches):			Bench Debris:								
Channel	Brick	Sound	No									
	Channel Debris Depth (Inches): 0.25			Channel Debris: Sanitary								
Surcharge from Invert Evident? No				Currently:				Marks To:				
Additional Comments:												

Line Conditions												
In/Out	Compass Direction	Pipe Size	Pipe Material	Rim to Invert Depth	Condition	Flow Depth	Defects	Infiltration	Infiltration (GPM)	Debris	Debris Depth	Debris Material
Out	15/031	8"	ACP	7'11"	Sound	0.25"	No	No	N/A	No	N/A	N/A
In	15/029	8"	ACP	7'9"	Sound	0.25"	No	No	N/A	No	N/A	N/A
Additional Comments:												

Westwood, MA Manhole Inspections Manhole ID: 15/029 Westwood, MA

General Information			
Inspectors	BK, TA	Location (Street)	103 Fisher St.
Date/Time	July 27, 2023 12:28	Meter Area	



Manhole Information			
Cover Material	Cast Iron	Holes In Cover	Yes
Cover Condition	Sound	Number of Holes	2
Cover Defects		Hole Size (inches)	0.75
Cover Size (inches)	26	Grade	At Grade
Clear Opening Diameter	24	Surface Materials	Paved
Drainage Area (sqft)	4	Cracked Pavement Surrounding Frame	Yes
Cover Comments			



Internal Manhole Observations						
Item	Material	Condition	Infiltration?	Infiltration (GPM)	Defects	Comments
Frame	Cast Iron	Sound	No			
Chimney	Brick, Precast, Parged	Sound	No			
Cone	Precast, Parged	Sound	No			
Walls	Precast, Parged	Sound	No			
Steps	Present? Yes	# of Steps: 4		Material: Metal		
Bench	Brick, Parged	Sound	No			
	Bench Debris Depth (Inches):			Bench Debris:		
Channel	Brick	Sound	No			
	Channel Debris Depth (Inches):			Channel Debris:		
Surcharge from Invert Evident? No				Currently:		Marks To:
Additional Comments:						

Line Conditions												
In/Out	Compass Direction	Pipe Size	Pipe Material	Rim to Invert Depth	Condition	Flow Depth	Defects	Infiltration	Infiltration (GPM)	Debris	Debris Depth	Debris Material
Out	15/030	8"	ACP	7'7"	Sound	0.25"	No	No	N/A	No	N/A	N/A
In	15/028	8"	ACP	7'5"	Sound	0.25"	No	No	N/A	No	N/A	N/A
Additional Comments:												

Westwood, MA Manhole Inspections
Manhole ID: 15/005
Westwood, MA

General Information			
Inspectors	BK, TA	Location (Street)	Nahatan St. @ French St.
Date/Time	July 27, 2023 08:51	Meter Area	



Manhole Information			
Cover Material	Cast Iron	Holes In Cover	Yes
Cover Condition	Sound	Number of Holes	2
Cover Defects		Hole Size (inches)	0.75
Cover Size (inches)	26	Grade	At Grade
Clear Opening Diameter	24	Surface Materials	Paved
Drainage Area (sqft)	4	Cracked Pavement Surrounding Frame	Yes
Cover Comments			

Internal Manhole Observations						
Item	Material	Condition	Infiltration?	Infiltration (GPM)	Defects	Comments
Frame	Cast Iron	Sound	No			
Chimney	Parged	Sound	No			
Cone	Parged	Sound	No			
Walls	Parged	Sound	No			
Steps	Present? Yes	# of Steps: 7		Material: Metal		
Bench	Parged	Sound	No			
	Bench Debris Depth (Inches):			Bench Debris:		
Channel	Parged	Sound	No			
	Channel Debris Depth (Inches): 1			Channel Debris: Sediment		
Surcharge from Invert Evident? No				Currently:	Marks To:	
Additional Comments:						

Line Conditions												
In/Out	Compass Direction	Pipe Size	Pipe Material	Rim to Invert Depth	Condition	Flow Depth	Defects	Infiltration	Infiltration (GPM)	Debris	Debris Depth	Debris Material
Out	15/018	8"	ACP	11'7"	Sound	1"	No	No	N/A	Yes	0.5"	Sediment
In	15/004	8"	ACP	11'6"	Sound	0.75"	No	No	N/A	Yes	0.25"	Sediment
In	15/112	8"	PVC	10'10"	Sound	0.25"	No	No	N/A	No	N/A	N/A
In	15/006	8"	ACP	11'5"	Sound	0.5"	No	No	N/A	Yes	0.25"	Sediment
Additional Comments:												

Westwood, MA Manhole Inspections
Manhole ID: 15/050
Westwood, MA

General Information			
Inspectors	BK, TA	Location (Street)	40 Colburn St.
Date/Time	July 26, 2023 13:06	Meter Area	



Manhole Information			
Cover Material	Cast Iron	Holes In Cover	No
Cover Condition	Sound	Number of Holes	2
Cover Defects		Hole Size (inches)	0.75
Cover Size (inches)	24	Grade	At Grade
Clear Opening Diameter	22	Surface Materials	Paved
Drainage Area (sqft)	4	Cracked Pavement Surrounding Frame	No
Cover Comments			

Internal Manhole Observations						
Item	Material	Condition	Infiltration?	Infiltration (GPM)	Defects	Comments
Frame	Cast Iron	Sound	No			
Chimney	Brick, Parged	Defective	No		MMM	
Cone	Precast	Sound	No			
Walls	Precast	Sound	No			
Steps	Present? Yes	# of Steps: 5		Material: Metal		
Bench	Parged	Sound	No			
	Bench Debris Depth (Inches):			Bench Debris:		
Channel	Brick	Sound	No			
	Channel Debris Depth (Inches): 0.5			Channel Debris: Sanitary, Sediment		
Surcharge from Invert Evident? No				Currently:		Marks To:
Additional Comments:						

Line Conditions												
In/Out	Compass Direction	Pipe Size	Pipe Material	Rim to Invert Depth	Condition	Flow Depth	Defects	Infiltration	Infiltration (GPM)	Debris	Debris Depth	Debris Material
Out	15/051	8"	ACP	9'7"	Sound	0	No	No	N/A	Yes	0.25"	Sanitary, Sediment
In	15/049	8"	ACP	9'5"	Sound	0	No	No	N/A	Yes	0.25"	Sanitary, Sediment
In	Southwest	8"	VCP	6'8"	Sound	0	No	No	N/A	No	N/A	N/A
Additional Comments:												

Westwood, MA Manhole Inspections Manhole ID: 15/038 Westwood, MA

General Information			
Inspectors	BK, TA	Location (Street)	120 Ellis St.
Date/Time	July 26, 2023 10:27	Meter Area	



Manhole Information			
Cover Material	Cast Iron	Holes In Cover	Yes
Cover Condition	Sound	Number of Holes	2
Cover Defects		Hole Size (inches)	0.75
Cover Size (inches)	26	Grade	At Grade
Clear Opening Diameter	24	Surface Materials	Paved
Drainage Area (sqft)	6	Cracked Pavement Surrounding Frame	Yes
Cover Comments			

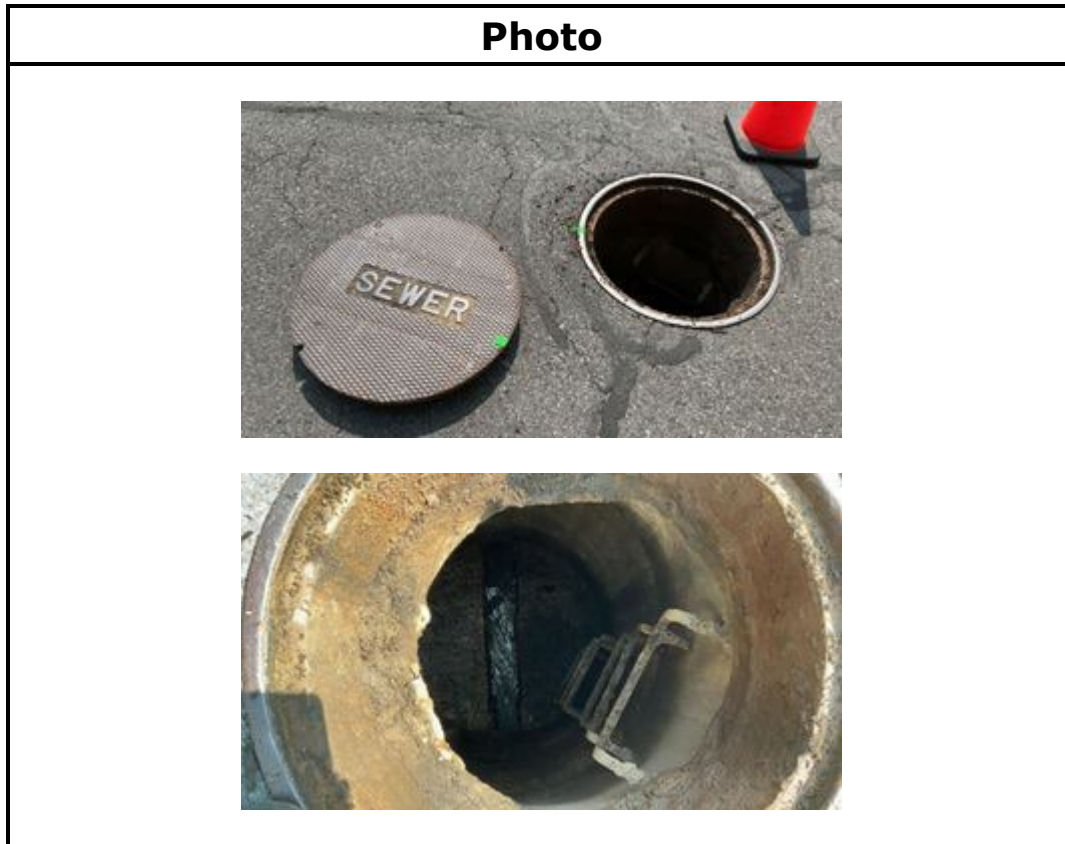


Internal Manhole Observations						
Item	Material	Condition	Infiltration?	Infiltration (GPM)	Defects	Comments
Frame	Cast Iron	Sound	No			
Chimney	Brick, Parged	Defective	No		MMM	
Cone	Precast	Sound	No			
Walls	Precast	Sound	No			
Steps	Present? Yes	# of Steps: 4		Material: Metal		
Bench	Parged	Sound	No			
	Bench Debris Depth (Inches): 2			Bench Debris: Sediment		
Channel	Brick	Sound	No			
	Channel Debris Depth (Inches): 0.5			Channel Debris: Sediment		
Surcharge from Invert Evident? No				Currently:	Marks To:	
Additional Comments:						

Line Conditions												
In/Out	Compass Direction	Pipe Size	Pipe Material	Rim to Invert Depth	Condition	Flow Depth	Defects	Infiltration	Infiltration (GPM)	Debris	Debris Depth	Debris Material
Out	15/039	8"	ACP	7'8"	Sound	0.25"	No	No	N/A	No	N/A	N/A
In	15/037	8"	ACP	7'7"	Sound	0.25"	No	No	N/A	No	N/A	N/A
Additional Comments:												

Westwood, MA Manhole Inspections Manhole ID: 15/025 Westwood, MA

General Information			
Inspectors	BK, TA	Location (Street)	25 French St.
Date/Time	July 26, 2023 10:19	Meter Area	



Manhole Information			
Cover Material	Cast Iron	Holes In Cover	Yes
Cover Condition	Sound	Number of Holes	2
Cover Defects		Hole Size (inches)	0.75
Cover Size (inches)	26	Grade	At Grade
Clear Opening Diameter	24	Surface Materials	Paved
Drainage Area (sqft)	4	Cracked Pavement Surrounding Frame	Yes
Cover Comments			



Associates, Inc.

Environmental Monitoring
Pipeline Services
Operations & Maintenance

Internal Manhole Observations						
Item	Material	Condition	Infiltration?	Infiltration (GPM)	Defects	Comments
Frame	Cast Iron	Sound	No			
Chimney	Precast, Parged	Sound	No			
Cone	Precast	Sound	No			
Walls	Precast, Parged	Sound	No			
Steps	Present? Yes	# of Steps: 6		Material: Metal		
Bench	Parged	Sound	No			
	Bench Debris Depth (Inches):			Bench Debris:		
Channel	Brick	Sound	No			
	Channel Debris Depth (Inches):			Channel Debris:		
Surcharge from Invert Evident? No				Currently:		Marks To:
Additional Comments:						

Line Conditions												
In/Out	Compass Direction	Pipe Size	Pipe Material	Rim to Invert Depth	Condition	Flow Depth	Defects	Infiltration	Infiltration (GPM)	Debris	Debris Depth	Debris Material
Out	15/024	8"	ACP	9'0"	Sound	1"	No	No	N/A	No	N/A	N/A
In	15/018	8"	ACP	8'11"	Sound	1"	No	No	N/A	No	N/A	N/A
Additional Comments:												

Westwood, MA Manhole Inspections Manhole ID: 15/027 Westwood, MA

General Information			
Inspectors	BK, TA	Location (Street)	161 Church St.
Date/Time	July 26, 2023 08:44	Meter Area	



Manhole Information			
Cover Material	Cast Iron	Holes In Cover	Yes
Cover Condition	Sound	Number of Holes	2
Cover Defects		Hole Size (inches)	0.5
Cover Size (inches)	26	Grade	At Grade
Clear Opening Diameter	24	Surface Materials	Paved
Drainage Area (sqft)	4	Cracked Pavement Surrounding Frame	Yes
Cover Comments			



Associates, Inc.

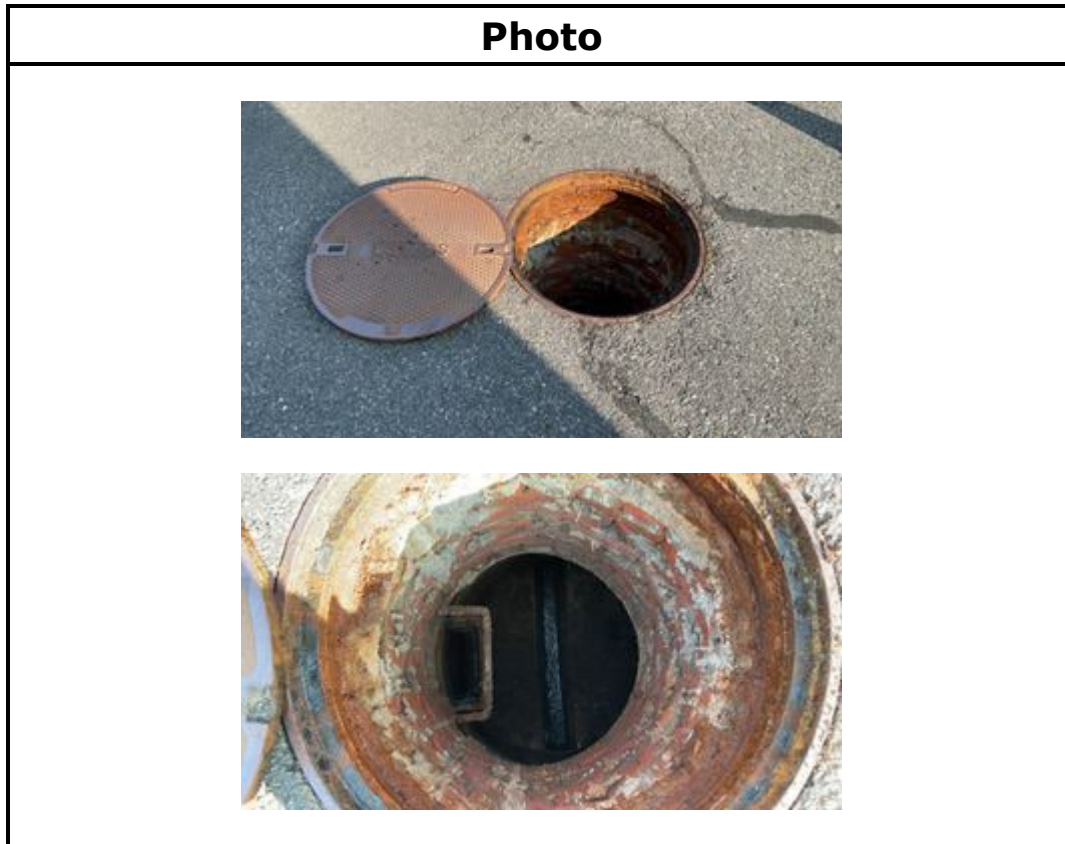
Environmental Monitoring
Pipeline Services
Operations & Maintenance

Internal Manhole Observations						
Item	Material	Condition	Infiltration?	Infiltration (GPM)	Defects	Comments
Frame	Cast Iron	Sound	No			
Chimney	Brick, Precast	Sound	No			
Cone	Precast	Sound	No			
Walls	Precast	Sound	No			
Steps	Present? Yes	# of Steps: 4		Material: Metal		
Bench	Parged	Sound	No			
	Bench Debris Depth (Inches): 1			Bench Debris: Sediment		
Channel	Brick	Sound	No			
	Channel Debris Depth (Inches):			Channel Debris:		
Surcharge from Invert Evident? No				Currently:		Marks To:
Additional Comments:						

Line Conditions												
In/Out	Compass Direction	Pipe Size	Pipe Material	Rim to Invert Depth	Condition	Flow Depth	Defects	Infiltration	Infiltration (GPM)	Debris	Debris Depth	Debris Material
Out	15/026	8"	ACP	8'5"	Sound	0	No	No	N/A	No	N/A	N/A
Additional Comments:												

Westwood, MA Manhole Inspections
Manhole ID: 15/023
Westwood, MA

General Information			
Inspectors	BK, TA	Location (Street)	111 Church St.
Date/Time	July 26, 2023 07:44	Meter Area	



Manhole Information			
Cover Material	Cast Iron	Holes In Cover	No
Cover Condition	Sound	Number of Holes	2
Cover Defects		Hole Size (inches)	0.75
Cover Size (inches)	24	Grade	At Grade
Clear Opening Diameter	22	Surface Materials	Paved
Drainage Area (sqft)	4	Cracked Pavement Surrounding Frame	Yes
Cover Comments	Blind Flange Cover		



Associates, Inc.

Environmental Monitoring
Pipeline Services
Operations & Maintenance

Internal Manhole Observations						
Item	Material	Condition	Infiltration?	Infiltration (GPM)	Defects	Comments
Frame	Cast Iron	Sound	No			
Chimney	Brick	Defective	No		MML	
Cone	Precast	Sound	No			
Walls	Precast	Sound	No			
Steps	Present? Yes	# of Steps: 4		Material: Metal		
Bench	Brick, Parged	Sound	No			
	Bench Debris Depth (Inches): 0.25			Bench Debris: Sediment		
Channel	Brick	Sound	No			
	Channel Debris Depth (Inches):			Channel Debris:		
Surcharge from Invert Evident? No				Currently:	Marks To:	
Additional Comments:						

Line Conditions												
In/Out	Compass Direction	Pipe Size	Pipe Material	Rim to Invert Depth	Condition	Flow Depth	Defects	Infiltration	Infiltration (GPM)	Debris	Debris Depth	Debris Material
Out	15/024	8"	ACP	9'2"	Sound	0.5"	No	No	N/A	No	N/A	N/A
In	15/022	8"	ACP	9'1"	Sound	0.5"	No	No	N/A	No	N/A	N/A
Additional Comments:												

Westwood, MA Manhole Inspections
Manhole ID: 15/111
Westwood, MA

General Information			
Inspectors	BK, TA	Location (Street)	200 Nahatan St.
Date/Time	July 27, 2023 07:50	Meter Area	



Manhole Information			
Cover Material	Cast Iron	Holes In Cover	Yes
Cover Condition	Sound	Number of Holes	2
Cover Defects		Hole Size (inches)	0.75
Cover Size (inches)	26	Grade	At Grade
Clear Opening Diameter	24	Surface Materials	Grass
Drainage Area (sqft)	4	Cracked Pavement Surrounding Frame	No
Cover Comments			



Internal Manhole Observations						
Item	Material	Condition	Infiltration ?	Infiltration (GPM)	Defects	Comments
Frame	Cast Iron	Defective	No		SCP	
Chimney	Precast	Sound	No			
Cone		None	No			
Walls	Precast	Defective	No		IS	
Steps	Present? Yes	# of Steps: 8		Material: Plastic		
Bench	Brick	Sound	No			
	Bench Debris Depth (Inches):			Bench Debris:		
Channel	Brick	Sound	No			
	Channel Debris Depth (Inches):			Channel Debris:		
Surcharge from Invert Evident? No				Currently:		Marks To:
Additional Comments:						

Line Conditions												
In/Out	Compass Direction	Pipe Size	Pipe Material	Rim to Invert Depth	Condition	Flow Depth	Defects	Infiltration	Infiltration (GPM)	Debris	Debris Depth	Debris Material
Out	15/112	8"	PVC	10'2"	Sound	0.1"	No	No	N/A	Yes	0.5"	Sanitary
In	15/110	8"	PVC	10'0"	Sound	0"	No	No	N/A	Yes	0.5"	Sediment
In	Northeast	6"	PVC	5'10"	Defective	0"	No	No	N/A	No	N/A	N/A
Additional Comments: In (Northeast) is an outside drop.												

Westwood, MA Manhole Inspections
Manhole ID: 15/072
Westwood, MA

General Information			
Inspectors	BK, TA	Location (Street)	Wagon Rd. @ Wellington Dr.
Date/Time	July 31, 2023 09:24	Meter Area	



Manhole Information			
Cover Material	Cast Iron	Holes In Cover	No
Cover Condition	Sound	Number of Holes	
Cover Defects		Hole Size (inches)	
Cover Size (inches)	24	Grade	At Grade
Clear Opening Diameter	22	Surface Materials	Paved
Drainage Area (sqft)	4	Cracked Pavement Surrounding Frame	Yes
Cover Comments			

Internal Manhole Observations						
Item	Material	Condition	Infiltration?	Infiltration (GPM)	Defects	Comments
Frame	Cast Iron	Sound	No			
Chimney	Brick, Block, Parged	Sound	No			
Cone	Precast	Defective	No		Lift holes missing mortar	
Walls	Precast, Parged	Sound	No			
Steps	Present? Yes	# of Steps: 7		Material: Metal		
Bench	Brick, Parged	Sound	No			
	Bench Debris Depth (Inches):			Bench Debris:		
Channel	Brick	Sound	No			
	Channel Debris Depth (Inches): 0.5			Channel Debris: Sanitary		
Surcharge from Invert Evident? No				Currently:	Marks To:	
Additional Comments:						

Line Conditions												
In/Out	Compass Direction	Pipe Size	Pipe Material	Rim to Invert Depth	Condition	Flow Depth	Defects	Infiltration	Infiltration (GPM)	Debris	Debris Depth	Debris Material
Out	15/074	8"	ACP	12'6"	Sound	0.5"	No	No	N/A	No	N/A	N/A
In	15/071	8"	ACP	12'4"	Sound	0.5"	No	No	N/A	No	N/A	N/A
In	15/073	8"	ACP	11'9"	Sound	0.1"	No	No	N/A	No	N/A	N/A
Additional Comments:												

Westwood, MA Manhole Inspections
Manhole ID: 15/114
Westwood, MA

General Information			
Inspectors	BK, TA	Location (Street)	81 Nahatan St. (in sidewalk)
Date/Time	July 28, 2023 09:17	Meter Area	



Manhole Information			
Cover Material	Cast Iron	Holes In Cover	Yes
Cover Condition	Sound	Number of Holes	2
Cover Defects		Hole Size (inches)	0.75
Cover Size (inches)	26	Grade	At Grade
Clear Opening Diameter	24	Surface Materials	Paved
Drainage Area (sqft)	4	Cracked Pavement Surrounding Frame	No
Cover Comments			



Associates, Inc.

Environmental Monitoring
Pipeline Services
Operations & Maintenance

Internal Manhole Observations						
Item	Material	Condition	Infiltration?	Infiltration (GPM)	Defects	Comments
Frame	Cast Iron	Sound	No			
Chimney	Block, Precast, Parged	Sound	No			
Cone	Precast	Sound	No			
Walls	Precast	Sound	No			
Steps	Present? Yes	# of Steps: 4		Material: Plastic		
Bench	Brick	Sound	No			
	Bench Debris Depth (Inches):			Bench Debris:		
Channel	Brick	Sound	No			
	Channel Debris Depth (Inches):			Channel Debris:		
Surcharge from Invert Evident? No				Currently:	Marks To:	
Additional Comments:						

Line Conditions												
In/Out	Compass Direction	Pipe Size	Pipe Material	Rim to Invert Depth	Condition	Flow Depth	Defects	Infiltration	Infiltration (GPM)	Debris	Debris Depth	Debris Material
Out	15/115	6"	PVC	7'2"	Sound	0	No	No	N/A	No	N/A	N/A
In	Northeast	6"	PVC	7'1"	Defective	0"	Pipe seal missing mortar	No	N/A	No	N/A	N/A
Additional Comments:												

Westwood, MA Manhole Inspections
Manhole ID: 15/115
Westwood, MA

General Information			
Inspectors	BK, TA	Location (Street)	97 Nahatan St. (in sidewalk)
Date/Time	July 28, 2023 09:08	Meter Area	



Manhole Information			
Cover Material	Cast Iron	Holes In Cover	Yes
Cover Condition	Sound	Number of Holes	2
Cover Defects		Hole Size (inches)	0.75
Cover Size (inches)	24	Grade	At Grade
Clear Opening Diameter	22	Surface Materials	Paved
Drainage Area (sqft)	4	Cracked Pavement Surrounding Frame	No
Cover Comments			

Internal Manhole Observations						
Item	Material	Condition	Infiltration?	Infiltration (GPM)	Defects	Comments
Frame	Cast Iron	Sound	No			
Chimney	Precast	Sound	No			
Cone		None	No			
Walls	Precast	Defective	No		Lift holes missing mortar, IS	
Steps	Present? Yes	# of Steps: 5		Material: Plastic		
Bench	Parged	Sound	No			
	Bench Debris Depth (Inches):			Bench Debris:		
Channel	Brick, Parged	Sound	No			
	Channel Debris Depth (Inches):			Channel Debris:		
Surcharge from Invert Evident? No				Currently:	Marks To:	
Additional Comments:						

Line Conditions												
In/Out	Compass Direction	Pipe Size	Pipe Material	Rim to Invert Depth	Condition	Flow Depth	Defects	Infiltration	Infiltration (GPM)	Debris	Debris Depth	Debris Material
Out	15/003	8"	PVC	8'0"	Defective	0.25"	Pipe connection leak	Yes	0.2"	No	N/A	N/A
In	15/114	6"	PVC	7'11"	Defective	0.25"	Pipe connections leak	Yes	0.2"	No	N/A	N/A
Additional Comments:												

Westwood, MA Manhole Inspections
Manhole ID: 15/009
Westwood, MA

General Information			
Inspectors	BK, TA	Location (Street)	187 Nahatan St.
Date/Time	July 27, 2023 09:16	Meter Area	



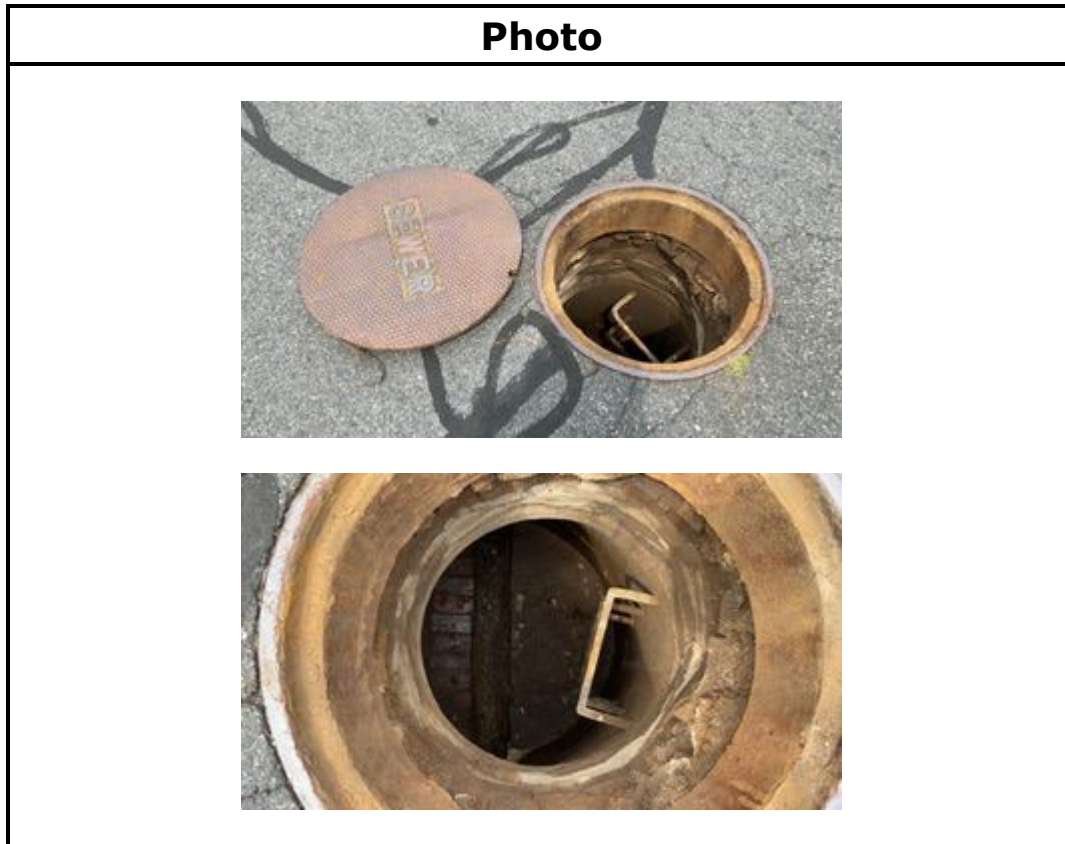
Manhole Information			
Cover Material	Cast Iron	Holes In Cover	Yes
Cover Condition	Sound	Number of Holes	2
Cover Defects		Hole Size (inches)	0.75
Cover Size (inches)	26	Grade	At Grade
Clear Opening Diameter	24	Surface Materials	Paved
Drainage Area (sqft)	4	Cracked Pavement Surrounding Frame	Yes
Cover Comments			

Internal Manhole Observations						
Item	Material	Condition	Infiltration?	Infiltration (GPM)	Defects	Comments
Frame	Cast Iron	Defective	No		Chipped	
Chimney	Parged	Sound	No			
Cone	Parged	Sound	No			
Walls	Parged	Sound	No			
Steps	Present? Yes	# of Steps: 7		Material: Metal		
Bench	Parged	Sound	No			
	Bench Debris Depth (Inches):			Bench Debris:		
Channel	ACP	Sound	No			
	Channel Debris Depth (Inches):			Channel Debris:		
Surcharge from Invert Evident? No				Currently:	Marks To:	
Additional Comments:						

Line Conditions												
In/Out	Compass Direction	Pipe Size	Pipe Material	Rim to Invert Depth	Condition	Flow Depth	Defects	Infiltration	Infiltration (GPM)	Debris	Debris Depth	Debris Material
Out	15/006	8"	ACP	9'4"	Sound	0.25"	No	No	N/A	No	N/A	N/A
In	15/009A	8"	ACP	9'3"	Sound	0.25"	No	No	N/A	No	N/A	N/A
Additional Comments:												

Westwood, MA Manhole Inspections
Manhole ID: 15/028
Westwood, MA

General Information			
Inspectors	BK, TA	Location (Street)	83 Fisher St.
Date/Time	July 27, 2023 12:22	Meter Area	



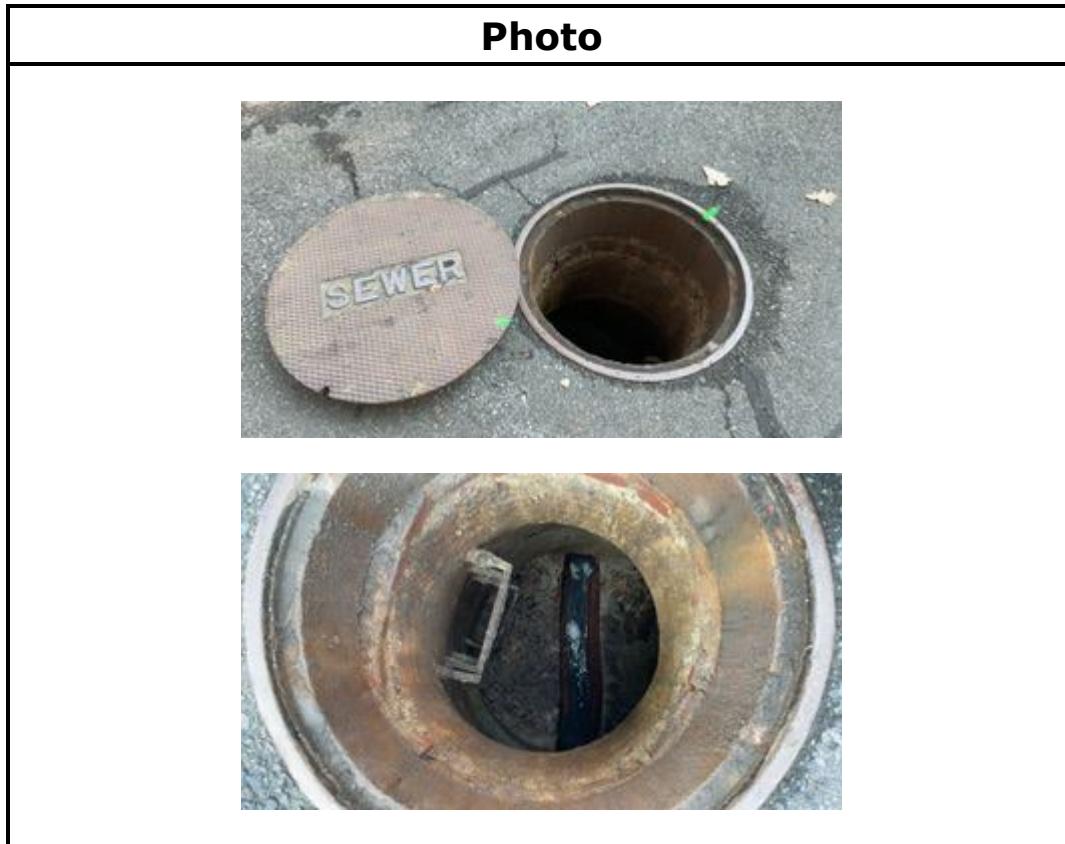
Manhole Information			
Cover Material	Cast Iron	Holes In Cover	Yes
Cover Condition	Sound	Number of Holes	2
Cover Defects		Hole Size (inches)	0.75
Cover Size (inches)	26	Grade	At Grade
Clear Opening Diameter	24	Surface Materials	Paved
Drainage Area (sqft)	4	Cracked Pavement Surrounding Frame	Yes
Cover Comments			

Internal Manhole Observations						
Item	Material	Condition	Infiltration?	Infiltration (GPM)	Defects	Comments
Frame	Cast Iron	Sound	No			
Chimney	Brick, Precast	Sound	No			
Cone	Precast	Sound	No			
Walls	Precast	Sound	No			
Steps	Present? Yes	# of Steps: 3		Material: Metal		
Bench	Brick	Sound	No			
	Bench Debris Depth (Inches): 1.5			Bench Debris: Sediment		
Channel	Brick	Sound	No			
	Channel Debris Depth (Inches): 0.5			Channel Debris: Sediment		
Surcharge from Invert Evident? No				Currently:	Marks To:	
Additional Comments:						

Line Conditions												
In/Out	Compass Direction	Pipe Size	Pipe Material	Rim to Invert Depth	Condition	Flow Depth	Defects	Infiltration	Infiltration (GPM)	Debris	Debris Depth	Debris Material
Out	15/029	8"	ACP	6'7"	Sound	0"	No	No	N/A	Yes	0.25"	Sediment
Additional Comments:												

Westwood, MA Manhole Inspections Manhole ID: 15/017 Westwood, MA

General Information			
Inspectors	BK, TA	Location (Street)	59 Ellis St.
Date/Time	July 26, 2023 09:27	Meter Area	



Manhole Information			
Cover Material	Cast Iron	Holes In Cover	Yes
Cover Condition	Sound	Number of Holes	2
Cover Defects		Hole Size (inches)	0.75
Cover Size (inches)	26	Grade	At Grade
Clear Opening Diameter	24	Surface Materials	Paved
Drainage Area (sqft)	4	Cracked Pavement Surrounding Frame	Yes
Cover Comments			



Internal Manhole Observations						
Item	Material	Condition	Infiltration?	Infiltration (GPM)	Defects	Comments
Frame	Cast Iron	Sound	No			
Chimney	Brick, Parged	Sound	No			
Cone	Parged	Sound	No			
Walls	Parged	Sound	No			
Steps	Present? Yes	# of Steps: 5		Material: Metal		
Bench	Parged	Sound	No			
	Bench Debris Depth (Inches): 1			Bench Debris: Sediment		
Channel	Brick	Sound	No			
	Channel Debris Depth (Inches): 0.25			Channel Debris: Sanitary, Sediment		
Surcharge from Invert Evident? No				Currently:		Marks To:
Additional Comments:						

Line Conditions												
In/Out	Compass Direction	Pipe Size	Pipe Material	Rim to Invert Depth	Condition	Flow Depth	Defects	Infiltration	Infiltration (GPM)	Debris	Debris Depth	Debris Material
Out	15/018	8"	ACP	8'0"	Sound	0.75"	No	No	N/A	No	N/A	N/A
In	15/016	8"	ACP	7'11"	Sound	0.75"	No	No	N/A	No	N/A	N/A
Additional Comments:												

Westwood, MA Manhole Inspections Manhole ID: 15/060 Westwood, MA

General Information			
Inspectors	BK, TA	Location (Street)	45 Olde Carriage Rd. (Easement)
Date/Time	July 31, 2023 11:21	Meter Area	



Manhole Information			
Cover Material	Cast Iron	Holes In Cover	Yes
Cover Condition	Sound	Number of Holes	2
Cover Defects		Hole Size (inches)	0.75
Cover Size (inches)	26	Grade	Below Grade
Clear Opening Diameter	24	Surface Materials	Dirt
Drainage Area (sqft)	10	Cracked Pavement Surrounding Frame	No
Cover Comments			

Internal Manhole Observations						
Item	Material	Condition	Infiltration?	Infiltration (GPM)	Defects	Comments
Frame	Cast Iron	Sound	No			
Chimney	Brick, Parged	Sound	No			
Cone	Precast	Defective	No		Lift holes missing mortar	
Walls	Precast	Sound	No			
Steps	Present? Yes	# of Steps: 4		Material: Metal		
Bench	Brick	Sound	No			
	Bench Debris Depth (Inches):			Bench Debris:		
Channel	Brick	Sound	No			
	Channel Debris Depth (Inches):			Channel Debris:		
Surcharge from Invert Evident? No				Currently:	Marks To:	
Additional Comments:						

Line Conditions												
In/Out	Compass Direction	Pipe Size	Pipe Material	Rim to Invert Depth	Condition	Flow Depth	Defects	Infiltration	Infiltration (GPM)	Debris	Debris Depth	Debris Material
Out	15/061	8"	ACP	7'1"	Sound	3"	No	No	N/A	No	N/A	N/A
In	15/059	8"	ACP	7'	Sound	3"	No	No	N/A	No	N/A	N/A
Additional Comments:												

Westwood, MA Manhole Inspections
Manhole ID: 15/092
Westwood, MA

General Information			
Inspectors	BK, TA	Location (Street)	28 Olde Carriage Rd. (Easement)
Date/Time	July 31, 2023 11:30	Meter Area	



Manhole Information			
Cover Material	Cast Iron	Holes In Cover	Yes
Cover Condition	Sound	Number of Holes	2
Cover Defects		Hole Size (inches)	0.75
Cover Size (inches)	26	Grade	Below Grade
Clear Opening Diameter	24	Surface Materials	Grass
Drainage Area (sqft)	10	Cracked Pavement Surrounding Frame	No
Cover Comments			

Internal Manhole Observations						
Item	Material	Condition	Infiltration?	Infiltration (GPM)	Defects	Comments
Frame	Cast Iron	Defective	No		SCP	
Chimney	Brick, Parged	Sound	No			
Cone	Precast	Defective	No		Lift holes missing mortar	
Walls	Precast	Sound	No			
Steps	Present? Yes	# of Steps: 6		Material: Metal		
Bench	Brick	Sound	No			
	Bench Debris Depth (Inches): 1			Bench Debris: Sediment		
Channel	Brick	Sound	No			
	Channel Debris Depth (Inches):			Channel Debris:		
Surcharge from Invert Evident? No				Currently:	Marks To:	
Additional Comments:						

Line Conditions												
In/Out	Compass Direction	Pipe Size	Pipe Material	Rim to Invert Depth	Condition	Flow Depth	Defects	Infiltration	Infiltration (GPM)	Debris	Debris Depth	Debris Material
Out	15/062	8"	ACP	9'6"	Sound	2.5"	No	No	N/A	No	N/A	N/A
In	15/061	8"	ACP	9'5"	Sound	2.5"	No	No	N/A	No	N/A	N/A
Additional Comments:												

Westwood, MA Manhole Inspections
Manhole ID: 15/009A
Westwood, MA

General Information			
Inspectors	BK, TA	Location (Street)	197 Nahatan St.
Date/Time	July 27, 2023 09:27	Meter Area	



Manhole Information			
Cover Material	Cast Iron	Holes In Cover	Yes
Cover Condition	Sound	Number of Holes	2
Cover Defects		Hole Size (inches)	0.75
Cover Size (inches)	26	Grade	At Grade
Clear Opening Diameter	24	Surface Materials	Paved
Drainage Area (sqft)	4	Cracked Pavement Surrounding Frame	Yes
Cover Comments			

Internal Manhole Observations						
Item	Material	Condition	Infiltration?	Infiltration (GPM)	Defects	Comments
Frame	Cast Iron	Sound	No			
Chimney	Brick	Sound	No			
Cone	Precast	Sound	No			
Walls	Precast	Sound	No			
Steps	Present? Yes	# of Steps: 5		Material: Metal		
Bench	Brick	Sound	No			
	Bench Debris Depth (Inches):			Bench Debris:		
Channel	ACP	Sound	No			
	Channel Debris Depth (Inches):			Channel Debris:		
Surcharge from Invert Evident? No				Currently:	Marks To:	
Additional Comments: Additional MH, not on map. Appears to look like SMH 15/010						

Line Conditions												
In/Out	Compass Direction	Pipe Size	Pipe Material	Rim to Invert Depth	Condition	Flow Depth	Defects	Infiltration	Infiltration (GPM)	Debris	Debris Depth	Debris Material
Out	15/009	8"	ACP	8'9"	Sound	0.75"	No	No	N/A	No	N/A	N/A
In	Northeast	8"	ACP	8'2"	Sound	0.25"	No	No	N/A	No	N/A	N/A
In	15/011	8"	ACP	8'8"	Sound	0.5"	No	No	N/A	No	N/A	N/A
Additional Comments:												

Westwood, MA Manhole Inspections
Manhole ID: 15/020
Westwood, MA

General Information			
Inspectors	BK, TA	Location (Street)	62 Church St.
Date/Time	July 26, 2023 07:17	Meter Area	



Manhole Information			
Cover Material	Cast Iron	Holes In Cover	Yes
Cover Condition	Sound	Number of Holes	2
Cover Defects		Hole Size (inches)	0.75
Cover Size (inches)	26	Grade	At Grade
Clear Opening Diameter	24	Surface Materials	Paved
Drainage Area (sqft)	8	Cracked Pavement Surrounding Frame	Yes
Cover Comments			



Associates, Inc.

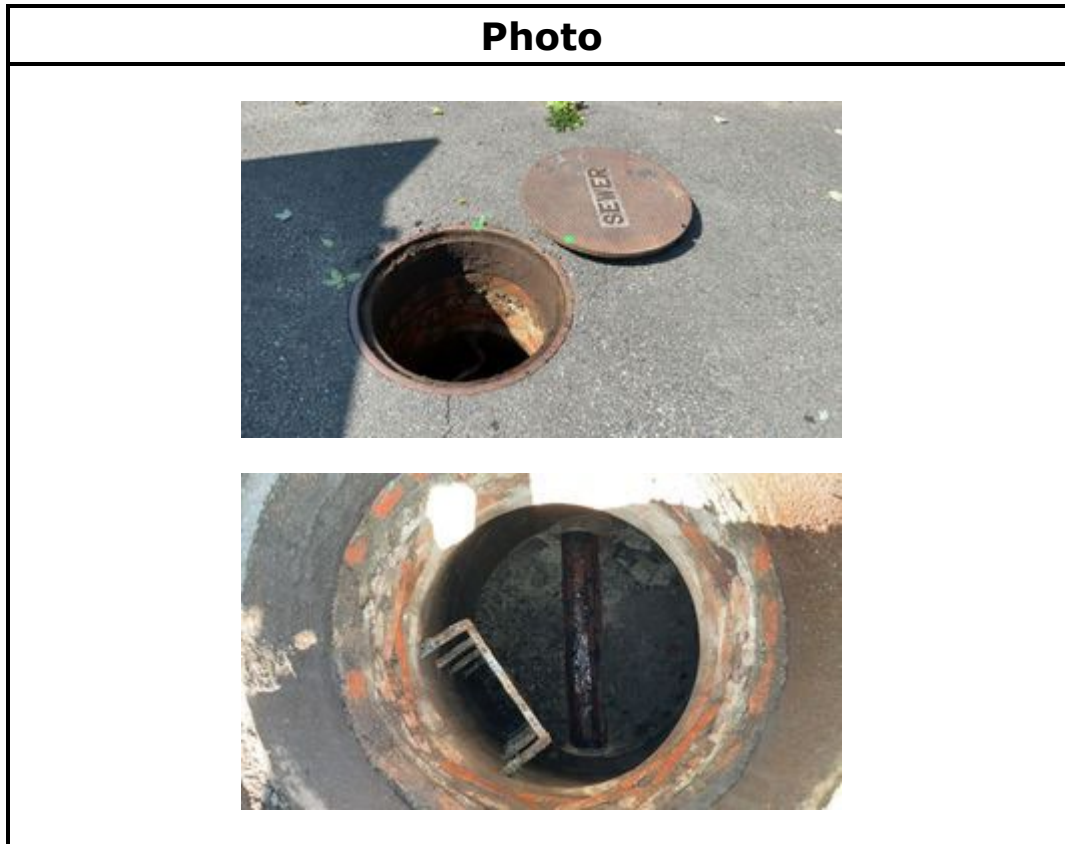
Environmental Monitoring
Pipeline Services
Operations & Maintenance

Internal Manhole Observations						
Item	Material	Condition	Infiltration?	Infiltration (GPM)	Defects	Comments
Frame	Cast Iron	Sound	No			
Chimney	Brick, Precast	Defective	No		MMS	
Cone	Precast	Sound	No			
Walls	Precast	Sound	No			
Steps	Present? Yes	# of Steps: 4		Material: Metal		
Bench	Brick	Sound	No			
	Bench Debris Depth (Inches):			Bench Debris:		
Channel	Brick	Sound	No			
	Channel Debris Depth (Inches):			Channel Debris:		
Surcharge from Invert Evident? No				Currently:		Marks To:
Additional Comments:						

Line Conditions												
In/Out	Compass Direction	Pipe Size	Pipe Material	Rim to Invert Depth	Condition	Flow Depth	Defects	Infiltration	Infiltration (GPM)	Debris	Debris Depth	Debris Material
Out	15/021	8"	ACP	7'4"	Sound	0	No	No	N/A	No	N/A	N/A
Additional Comments:												

Westwood, MA Manhole Inspections
Manhole ID: 15/047
Westwood, MA

General Information			
Inspectors	BK, TA	Location (Street)	97 Bayley St.
Date/Time	July 28, 2023 09:56	Meter Area	



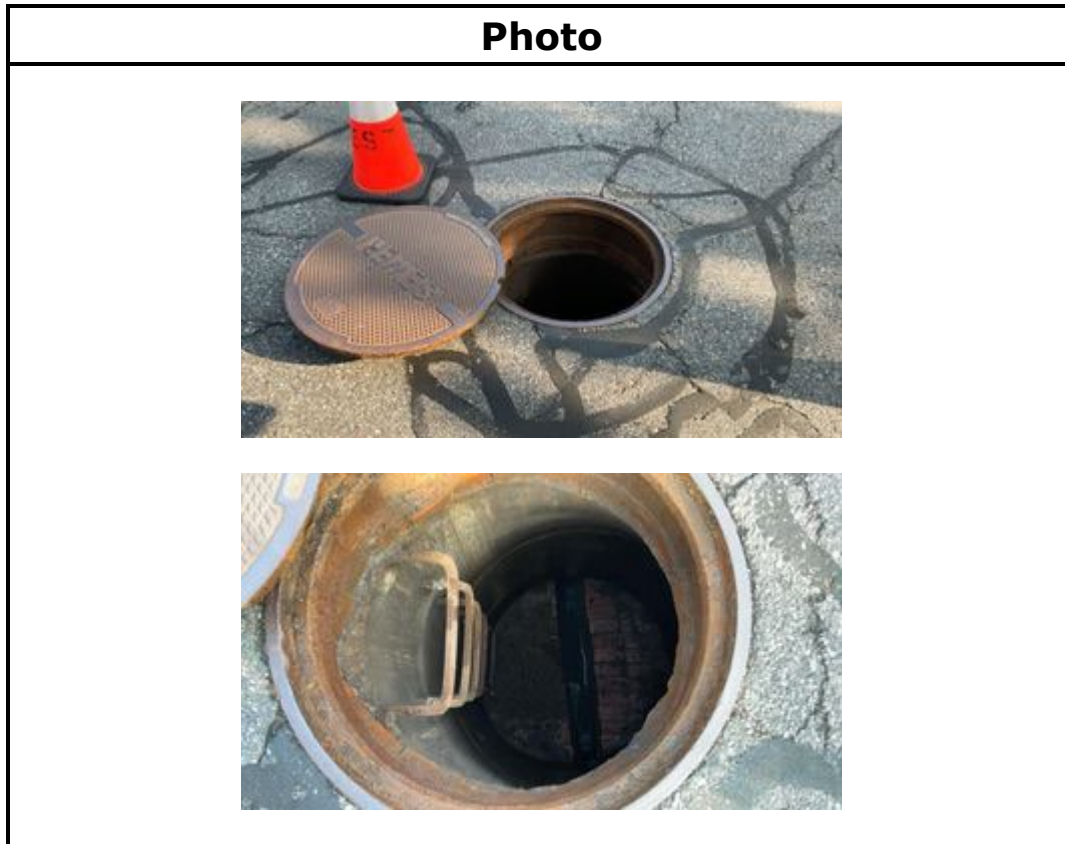
Manhole Information			
Cover Material	Cast Iron	Holes In Cover	Yes
Cover Condition	Sound	Number of Holes	2
Cover Defects		Hole Size (inches)	0.75
Cover Size (inches)	26	Grade	At Grade
Clear Opening Diameter	24	Surface Materials	Paved
Drainage Area (sqft)	4	Cracked Pavement Surrounding Frame	No
Cover Comments			

Internal Manhole Observations						
Item	Material	Condition	Infiltration?	Infiltration (GPM)	Defects	Comments
Frame	Cast Iron	Sound	No			
Chimney	Brick, Parged	Sound	No			
Cone	Precast	Defective	No		Lift holes missing mortar	
Walls	Precast	Defective	No		SRV	
Steps	Present? Yes	# of Steps: 4		Material: Metal		
Bench	Parged	Sound	No			
	Bench Debris Depth (Inches): 0.5			Bench Debris: Sediment		
Channel	Brick	Sound	No			
	Channel Debris Depth (Inches):			Channel Debris:		
Surcharge from Invert Evident? No				Currently:		Marks To:
Additional Comments:						

Line Conditions												
In/Out	Compass Direction	Pipe Size	Pipe Material	Rim to Invert Depth	Condition	Flow Depth	Defects	Infiltration	Infiltration (GPM)	Debris	Debris Depth	Debris Material
Out	15/048	8"	ACP	7'7"	Sound	0.25"	No	No	N/A	No	N/A	N/A
In	15/046	8"	ACP	7'6"	Sound	0.25"	No	No	N/A	No	N/A	N/A
Additional Comments:												

Westwood, MA Manhole Inspections
Manhole ID: 15/022
Westwood, MA

General Information			
Inspectors	BK, TA	Location (Street)	Church St. @ Bonney St.
Date/Time	July 26, 2023 07:31	Meter Area	



Manhole Information			
Cover Material	Cast Iron	Holes In Cover	Yes
Cover Condition	Sound	Number of Holes	2
Cover Defects		Hole Size (inches)	0.75
Cover Size (inches)	26	Grade	At Grade
Clear Opening Diameter	24	Surface Materials	Paved
Drainage Area (sqft)	4	Cracked Pavement Surrounding Frame	Yes
Cover Comments			

Internal Manhole Observations						
Item	Material	Condition	Infiltration?	Infiltration (GPM)	Defects	Comments
Frame	Cast Iron	Sound	No			
Chimney	Brick, Precast	Sound	No			
Cone	Precast	Sound	No			
Walls	Precast	Sound	No			
Steps	Present? Yes	# of Steps: 6		Material: Metal		
Bench	Brick	Sound	No			
	Bench Debris Depth (Inches): 0.25			Bench Debris: Sediment		
Channel	Brick	Sound	No			
	Channel Debris Depth (Inches):			Channel Debris:		
Surcharge from Invert Evident? No				Currently:		Marks To:
Additional Comments:						

Line Conditions												
In/Out	Compass Direction	Pipe Size	Pipe Material	Rim to Invert Depth	Condition	Flow Depth	Defects	Infiltration	Infiltration (GPM)	Debris	Debris Depth	Debris Material
Out	15/023	8"	ACP	9'0"	Sound	0.25"	No	No	N/A	No	N/A	N/A
In	15/021	8"	ACP	8'11"	Sound	0.25"	No	No	N/A	No	N/A	N/A
Additional Comments:												

Westwood, MA Manhole Inspections
Manhole ID: 15/053
Westwood, MA

General Information			
Inspectors	BK, TA	Location (Street)	98 Colburn St.
Date/Time	July 26, 2023 12:29	Meter Area	



Manhole Information			
Cover Material	Cast Iron	Holes In Cover	Yes
Cover Condition	Sound	Number of Holes	2
Cover Defects		Hole Size (inches)	0.75
Cover Size (inches)	26	Grade	At Grade
Clear Opening Diameter	24	Surface Materials	Paved
Drainage Area (sqft)	4	Cracked Pavement Surrounding Frame	No
Cover Comments			

Internal Manhole Observations						
Item	Material	Condition	Infiltration?	Infiltration (GPM)	Defects	Comments
Frame	Cast Iron	Sound	No			
Chimney	Parged	Sound	No			
Cone	Parged	Sound	No			
Walls	Parged	Sound	No			
Steps	Present? Yes	# of Steps: 4		Material: Metal		
Bench	Parged	Sound	No			
	Bench Debris Depth (Inches):			Bench Debris:		
Channel	Parged	Sound	No			
	Channel Debris Depth (Inches):			Channel Debris:		
Surcharge from Invert Evident? No				Currently:	Marks To:	
Additional Comments:						

Line Conditions												
In/Out	Compass Direction	Pipe Size	Pipe Material	Rim to Invert Depth	Condition	Flow Depth	Defects	Infiltration	Infiltration (GPM)	Debris	Debris Depth	Debris Material
Out	15/054	8"	Lined	7'10:	Sound	0.75"	No	No	N/A	No	N/A	N/A
In	15/052	8"	Lined	7'9"	Sound	0.75"	No	No	N/A	No	N/A	N/A
Additional Comments:												

Westwood, MA Manhole Inspections
Manhole ID: 15/046
Westwood, MA

General Information			
Inspectors	BK, TA	Location (Street)	Bayley St. @ Bonney St.
Date/Time	July 27, 2023 11:14	Meter Area	



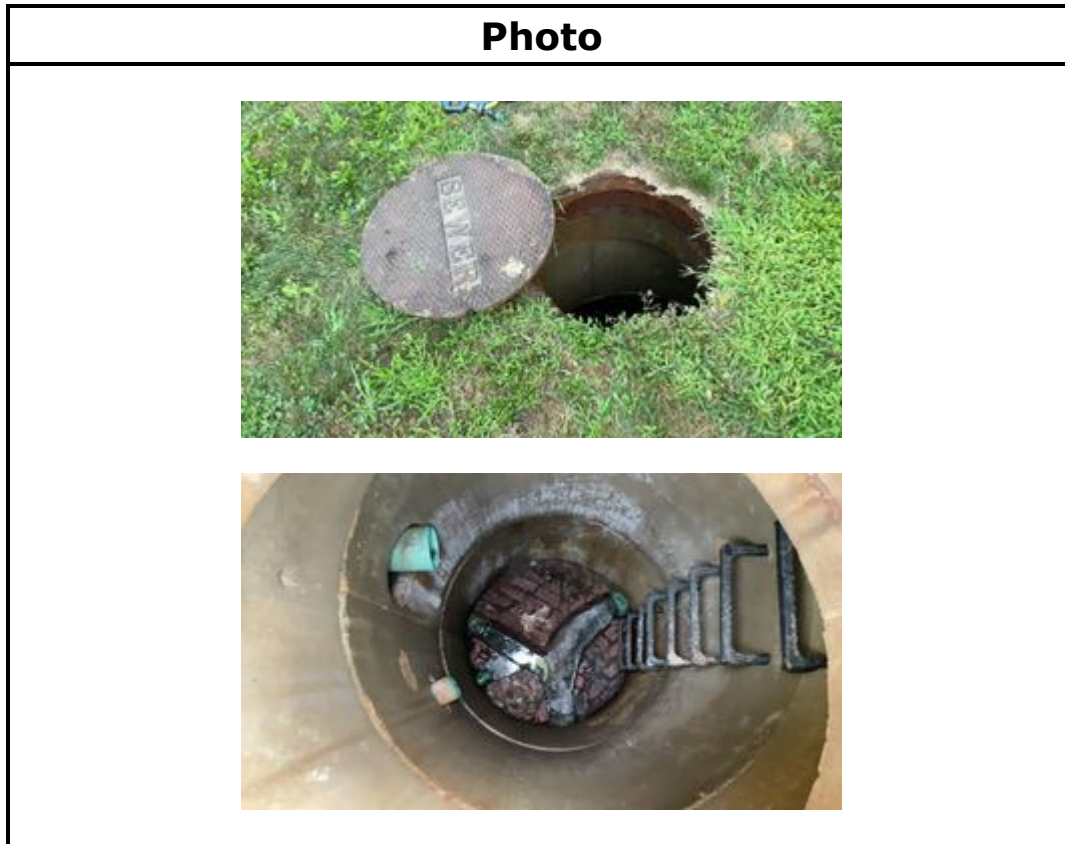
Manhole Information			
Cover Material	Cast Iron	Holes In Cover	Yes
Cover Condition	Sound	Number of Holes	2
Cover Defects		Hole Size (inches)	0.75
Cover Size (inches)	26	Grade	At Grade
Clear Opening Diameter	24	Surface Materials	Paved
Drainage Area (sqft)	4	Cracked Pavement Surrounding Frame	No
Cover Comments			

Internal Manhole Observations						
Item	Material	Condition	Infiltration?	Infiltration (GPM)	Defects	Comments
Frame	Cast Iron	Sound	No			
Chimney	Brick, Parged	Defective	No		MMM	
Cone	Precast	Sound	No			
Walls	Precast, Parged	Defective	Yes	0.01	IR	
Steps	Present? Yes	# of Steps: 5		Material: Metal		
Bench	Brick	Sound	No			
	Bench Debris Depth (Inches):			Bench Debris:		
Channel	Brick	Sound	No			
	Channel Debris Depth (Inches):			Channel Debris:		
Surcharge from Invert Evident? No				Currently:	Marks To:	
Additional Comments:						

Line Conditions												
In/Out	Compass Direction	Pipe Size	Pipe Material	Rim to Invert Depth	Condition	Flow Depth	Defects	Infiltration	Infiltration (GPM)	Debris	Debris Depth	Debris Material
Out	15/047	8"	ACP	8'4"	Sound	0.5"	No	No	N/A	No	N/A	N/A
In	15/057	8"	ACP	8'2"	Sound	0.25"	No	No	N/A	No	N/A	N/A
In	15/045	8"	ACP	8'0"	Sound	0.25"	No	No	N/A	No	N/A	N/A
Additional Comments:												

Westwood, MA Manhole Inspections
Manhole ID: 15/108
Westwood, MA

General Information			
Inspectors	BK, TA	Location (Street)	200 Nahatan St.
Date/Time	July 27, 2023 07:38	Meter Area	



Manhole Information			
Cover Material	Cast Iron	Holes In Cover	Yes
Cover Condition	Sound	Number of Holes	2
Cover Defects		Hole Size (inches)	0.75
Cover Size (inches)	26	Grade	At Grade
Clear Opening Diameter	24	Surface Materials	Grass
Drainage Area (sqft)	4	Cracked Pavement Surrounding Frame	No
Cover Comments			



Associates, Inc.

Environmental Monitoring
Pipeline Services
Operations & Maintenance

Internal Manhole Observations						
Item	Material	Condition	Infiltration?	Infiltration (GPM)	Defects	Comments
Frame	Cast Iron	Defective	No		SCP	
Chimney	Brick, Precast	Defective	No		H, MML	
Cone		None	No			
Walls	Precast	Defective	No		MML, H	
Steps	Present? Yes	# of Steps: 7		Material: Plastic		
Bench	Brick	Defective	No		MMS	
	Bench Debris Depth (Inches):			Bench Debris:		
Channel	Brick	Sound	No			
	Channel Debris Depth (Inches): 1.5			Channel Debris: Sanitary		
Surcharge from Invert Evident? No				Currently:	Marks To:	
Additional Comments:						

Line Conditions												
In/Out	Compass Direction	Pipe Size	Pipe Material	Rim to Invert Depth	Condition	Flow Depth	Defects	Infiltration	Infiltration (GPM)	Debris	Debris Depth	Debris Material
Out	15/112	8"	PVC	11'6"	Defective	0"	Pipe seal missing mortar	No	N/A	Yes	1.5"	Sanitary
In	Northwest 1	4"	PVC	6'11"	Defective	0"	Pipe seal missing mortar	No	N/A	No	N/A	N/A
In	Northwest 2	6"	PVC	11'5"	Defective	0"	Pipe seal missing mortar	No	N/A	No	N/A	N/A
In	North	6"	PVC	5'8"	Defective	0"	Pipe seal missing mortar	No	N/A	No	N/A	N/A
In	15/109	8"	PVC	11'5"	Defective	0.25"	Pipe seal missing mortar	No	N/A	No	N/A	N/A
Additional Comments:												

Westwood, MA Manhole Inspections
Manhole ID: 15/041
Westwood, MA

General Information			
Inspectors	BK, TA	Location (Street)	142 Ellis St.
Date/Time	July 26, 2023 10:55	Meter Area	



Manhole Information			
Cover Material	Cast Iron	Holes In Cover	Yes
Cover Condition	Sound	Number of Holes	2
Cover Defects		Hole Size (inches)	0.75
Cover Size (inches)	26	Grade	At Grade
Clear Opening Diameter	24	Surface Materials	Paved
Drainage Area (sqft)	4	Cracked Pavement Surrounding Frame	No
Cover Comments			

Internal Manhole Observations						
Item	Material	Condition	Infiltration?	Infiltration (GPM)	Defects	Comments
Frame	Cast Iron	Sound	No			
Chimney	Brick, Parged	Defective	No		MMS	
Cone	Precast, Parged	Sound	No			
Walls	Precast, Parged	Sound	No			
Steps	Present? Yes	# of Steps: 7		Material: Metal		
Bench	Brick, Parged	Sound	No			
	Bench Debris Depth (Inches):			Bench Debris:		
Channel	Brick	Sound	No			
	Channel Debris Depth (Inches):			Channel Debris:		
Surcharge from Invert Evident? No				Currently:	Marks To:	
Additional Comments:						

Line Conditions												
In/Out	Compass Direction	Pipe Size	Pipe Material	Rim to Invert Depth	Condition	Flow Depth	Defects	Infiltration	Infiltration (GPM)	Debris	Debris Depth	Debris Material
Out	15/042	8"	ACP	10'3"	Sound	4"	No	No	N/A	No	N/A	N/A
In	15/040	8"	ACP	10'1"	Sound	4"	No	No	N/A	No	N/A	N/A
In	Southeast	6"	PVC	4'8"	Sound	0.1"	No	No	N/A	No	N/A	N/A
Additional Comments: In (Southeast) is an outside drop, coming from a patch of woods.												

Westwood, MA Manhole Inspections
Manhole ID: 15/058
Westwood, MA

General Information			
Inspectors	BK, TA	Location (Street)	60 Olde Carriage Rd. (Easement)
Date/Time	July 31, 2023 10:55	Meter Area	



Manhole Information			
Cover Material	Cast Iron	Holes In Cover	No
Cover Condition	Sound	Number of Holes	
Cover Defects		Hole Size (inches)	
Cover Size (inches)	26	Grade	Below Grade
Clear Opening Diameter	24	Surface Materials	Grass
Drainage Area (sqft)	25	Cracked Pavement Surrounding Frame	No
Cover Comments			



Internal Manhole Observations						
Item	Material	Condition	Infiltration?	Infiltration (GPM)	Defects	Comments
Frame	Cast Iron	Sound	No			
Chimney	Parged	Sound	No			
Cone	Parged	Sound	No			
Walls	Parged	Sound	No			
Steps	Present? Yes	# of Steps: 6		Material: Metal		
Bench	Brick, Parged	Sound	No			
	Bench Debris Depth (Inches):			Bench Debris:		
Channel	Brick, Lined, Parged	Sound	No			
	Channel Debris Depth (Inches):			Channel Debris:		
Surcharge from Invert Evident? No				Currently:		Marks To:
Additional Comments:						

Line Conditions												
In/Out	Compass Direction	Pipe Size	Pipe Material	Rim to Invert Depth	Condition	Flow Depth	Defects	Infiltration	Infiltration (GPM)	Debris	Debris Depth	Debris Material
Out	15/059	8"	ACP	8'8"	Sound	2"	No	No	N/A	No	N/A	N/A
In	15/043	8"	Lined	8'7"	Sound	2"	No	No	N/A	No	N/A	N/A
Additional Comments:												

Westwood, MA Manhole Inspections
Manhole ID: 15/071
Westwood, MA

General Information			
Inspectors	BK, TA	Location (Street)	90 Wagon Rd.
Date/Time	July 31, 2023 09:36	Meter Area	



Manhole Information			
Cover Material	Cast Iron	Holes In Cover	No
Cover Condition	Sound	Number of Holes	
Cover Defects		Hole Size (inches)	
Cover Size (inches)	24	Grade	At Grade
Clear Opening Diameter	22	Surface Materials	Paved
Drainage Area (sqft)	4	Cracked Pavement Surrounding Frame	No
Cover Comments			



Internal Manhole Observations						
Item	Material	Condition	Infiltration?	Infiltration (GPM)	Defects	Comments
Frame	Cast Iron	Sound	No			
Chimney	Parged	Sound	No			
Cone	Parged	Sound	No			
Walls	Parged	Sound	No			
Steps	Present? Yes	# of Steps: 8		Material: Metal		
Bench	Parged	Sound	No			
	Bench Debris Depth (Inches):			Bench Debris:		
Channel	Parged	Sound	No			
	Channel Debris Depth (Inches):			Channel Debris:		
Surcharge from Invert Evident? No				Currently:		Marks To:
Additional Comments:						

Line Conditions												
In/Out	Compass Direction	Pipe Size	Pipe Material	Rim to Invert Depth	Condition	Flow Depth	Defects	Infiltration	Infiltration (GPM)	Debris	Debris Depth	Debris Material
Out	15/072	8"	ACP	11'0"	Sound	0.1"	No	No	N/A	No	N/A	N/A
In	15/070	8"	ACP	10'11"	Sound	0.1"	No	No	N/A	No	N/A	N/A
Additional Comments:												

Westwood, MA Manhole Inspections
Manhole ID: 15/074
Westwood, MA

General Information			
Inspectors	BK, TA	Location (Street)	65 Wagon Rd.
Date/Time	July 31, 2023 08:55	Meter Area	



Manhole Information			
Cover Material	Cast Iron	Holes In Cover	No
Cover Condition	Sound	Number of Holes	
Cover Defects		Hole Size (inches)	
Cover Size (inches)	24	Grade	Below Grade
Clear Opening Diameter	22	Surface Materials	Paved
Drainage Area (sqft)	16	Cracked Pavement Surrounding Frame	No
Cover Comments			

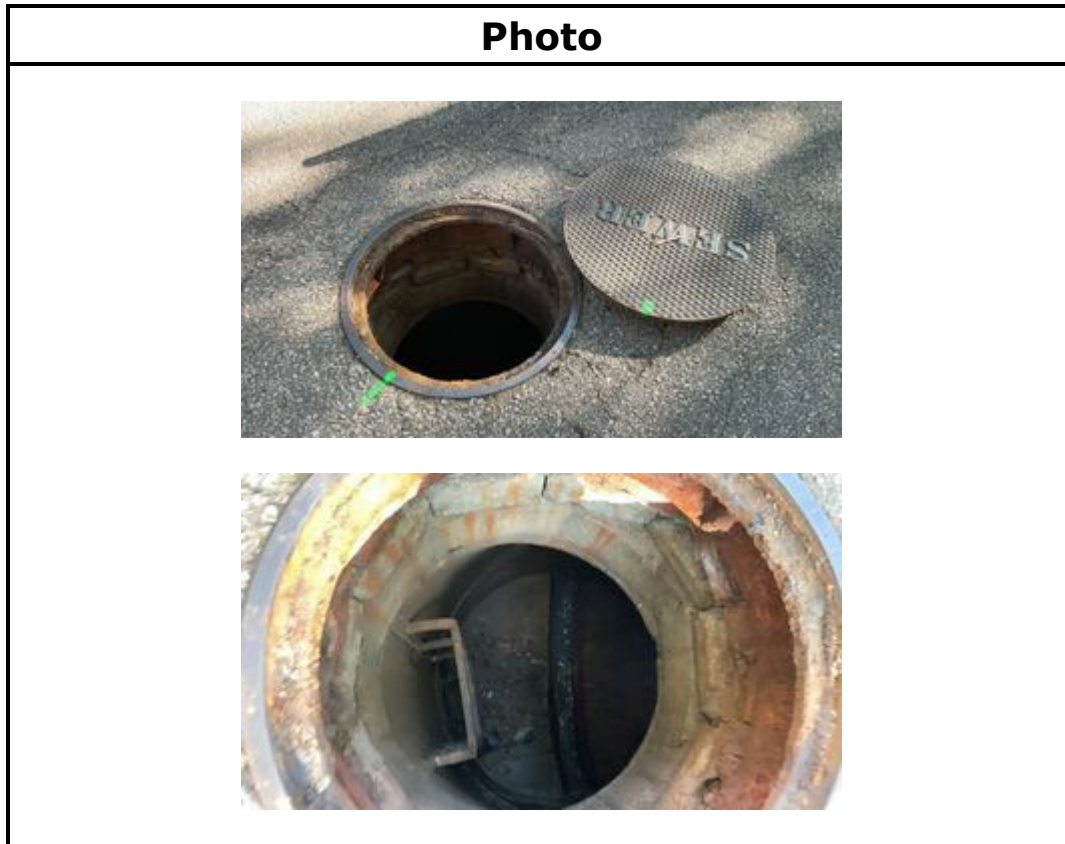


Internal Manhole Observations						
Item	Material	Condition	Infiltration?	Infiltration (GPM)	Defects	Comments
Frame	Cast Iron	Defective	No		SCP	
Chimney	Brick, Block, Precast	Defective	No		MML, MB	
Cone		None	No			
Walls	Precast	Sound	No			
Steps	Present? Yes	# of Steps: 4		Material: Metal		
Bench	Brick	Sound	No			
	Bench Debris Depth (Inches):			Bench Debris:		
Channel	Brick	Sound	No			
	Channel Debris Depth (Inches):			Channel Debris:		
Surcharge from Invert Evident? No				Currently:	Marks To:	
Additional Comments:						

Line Conditions												
In/Out	Compass Direction	Pipe Size	Pipe Material	Rim to Invert Depth	Condition	Flow Depth	Defects	Infiltration	Infiltration (GPM)	Debris	Debris Depth	Debris Material
Out	15/075	8"	ACP	7'4"	Sound	0.75"	No	No	N/A	No	N/A	N/A
In	15/072	8"	ACP	7'3"	Sound	0.75"	No	No	N/A	No	N/A	N/A
Additional Comments:												

Westwood, MA Manhole Inspections
Manhole ID: 15/076
Westwood, MA

General Information			
Inspectors	BK, TA	Location (Street)	55 Wagon Rd.
Date/Time	July 31, 2023 08:14	Meter Area	



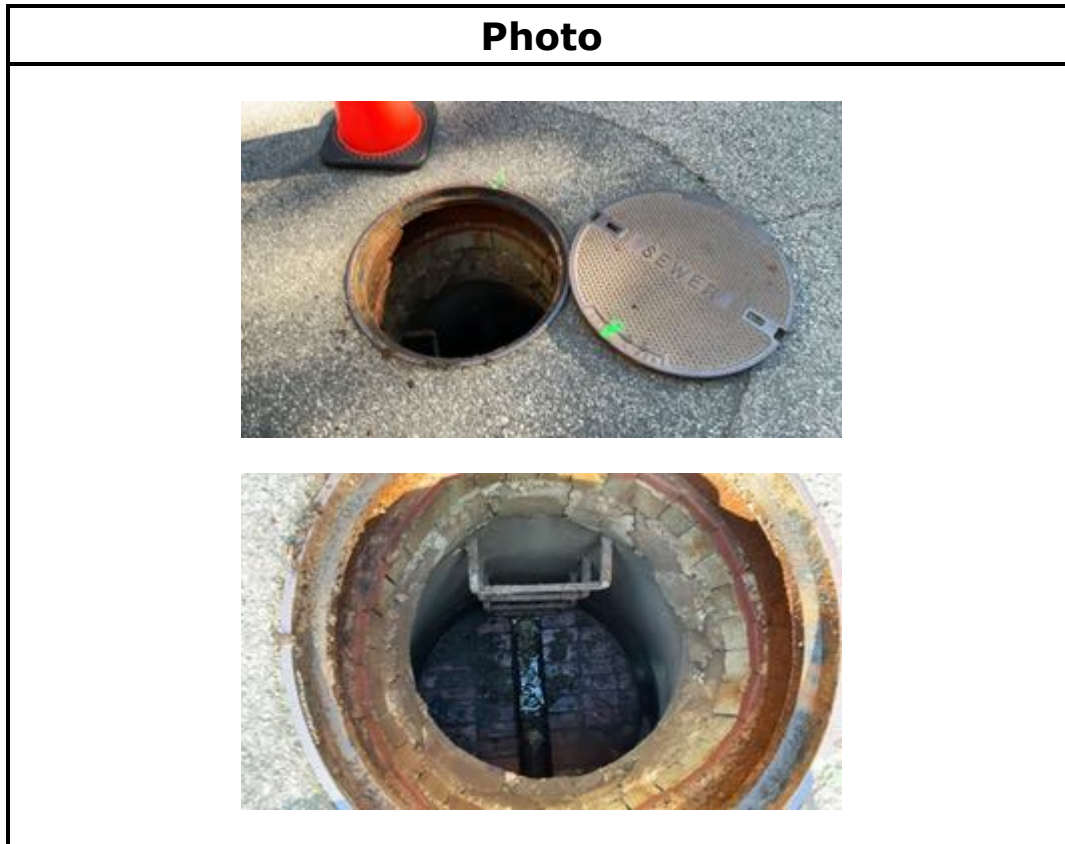
Manhole Information			
Cover Material	Cast Iron	Holes In Cover	No
Cover Condition	Sound	Number of Holes	
Cover Defects		Hole Size (inches)	
Cover Size (inches)	24	Grade	At Grade
Clear Opening Diameter	22	Surface Materials	Paved
Drainage Area (sqft)	4	Cracked Pavement Surrounding Frame	No
Cover Comments			

Internal Manhole Observations						
Item	Material	Condition	Infiltration?	Infiltration (GPM)	Defects	Comments
Frame	Cast Iron	Defective	No		SCP	
Chimney	Brick, Block, Precast	Defective	No		MML, MB	
Cone	Precast	Defective	No		Lift holes missing mortar	
Walls	Precast	Sound	No			
Steps	Present? Yes	# of Steps: 4		Material: Metal		
Bench	Brick	Sound	No			
	Bench Debris Depth (Inches): 2.5			Bench Debris: Sediment		
Channel	Brick	Sound	No			
	Channel Debris Depth (Inches): 0.5			Channel Debris: Sanitary		
Surcharge from Invert Evident? No				Currently:	Marks To:	
Additional Comments:						

Line Conditions												
In/Out	Compass Direction	Pipe Size	Pipe Material	Rim to Invert Depth	Condition	Flow Depth	Defects	Infiltration	Infiltration (GPM)	Debris	Debris Depth	Debris Material
Out	15/077	8"	ACP	7'5"	Sound	0.75"	No	No	N/A	No	N/A	N/A
In	15/075	8"	ACP	7'4"	Sound	0.75"	No	No	N/A	No	N/A	N/A
Additional Comments:												

Westwood, MA Manhole Inspections
Manhole ID: 15/077
Westwood, MA

General Information			
Inspectors	BK, TA	Location (Street)	34 Wagon Rd.
Date/Time	July 31, 2023 07:50	Meter Area	



Manhole Information			
Cover Material	Cast Iron	Holes In Cover	No
Cover Condition	Sound	Number of Holes	
Cover Defects		Hole Size (inches)	
Cover Size (inches)	24	Grade	At Grade
Clear Opening Diameter	22	Surface Materials	Paved
Drainage Area (sqft)	4	Cracked Pavement Surrounding Frame	No
Cover Comments	Blind flange		

Internal Manhole Observations						
Item	Material	Condition	Infiltration?	Infiltration (GPM)	Defects	Comments
Frame	Cast Iron	Sound	No			
Chimney	Brick, Block	Defective	No		MML	
Cone	Precast	Sound	No			
Walls	Precast	Sound	No			
Steps	Present? Yes	# of Steps: 4		Material: Metal		
Bench	Brick	Sound	No			
	Bench Debris Depth (Inches): 0.25			Bench Debris: Sediment		
Channel	Brick	Sound	No			
	Channel Debris Depth (Inches):			Channel Debris:		
Surcharge from Invert Evident? No				Currently:	Marks To:	
Additional Comments:						

Line Conditions												
In/Out	Compass Direction	Pipe Size	Pipe Material	Rim to Invert Depth	Condition	Flow Depth	Defects	Infiltration	Infiltration (GPM)	Debris	Debris Depth	Debris Material
Out	15/078	8"	ACP	7'5"	Sound	0.25"	No	No	N/A	No	N/A	N/A
In	15/076	8"	ACP	7'4"	Sound	0.25"	No	No	N/A	No	N/A	N/A
Additional Comments:												

Westwood, MA Manhole Inspections
Manhole ID: 15/080
Westwood, MA

General Information			
Inspectors	BK, TA	Location (Street)	54 Olde Carriage Rd.
Date/Time	July 31, 2023 07:42	Meter Area	



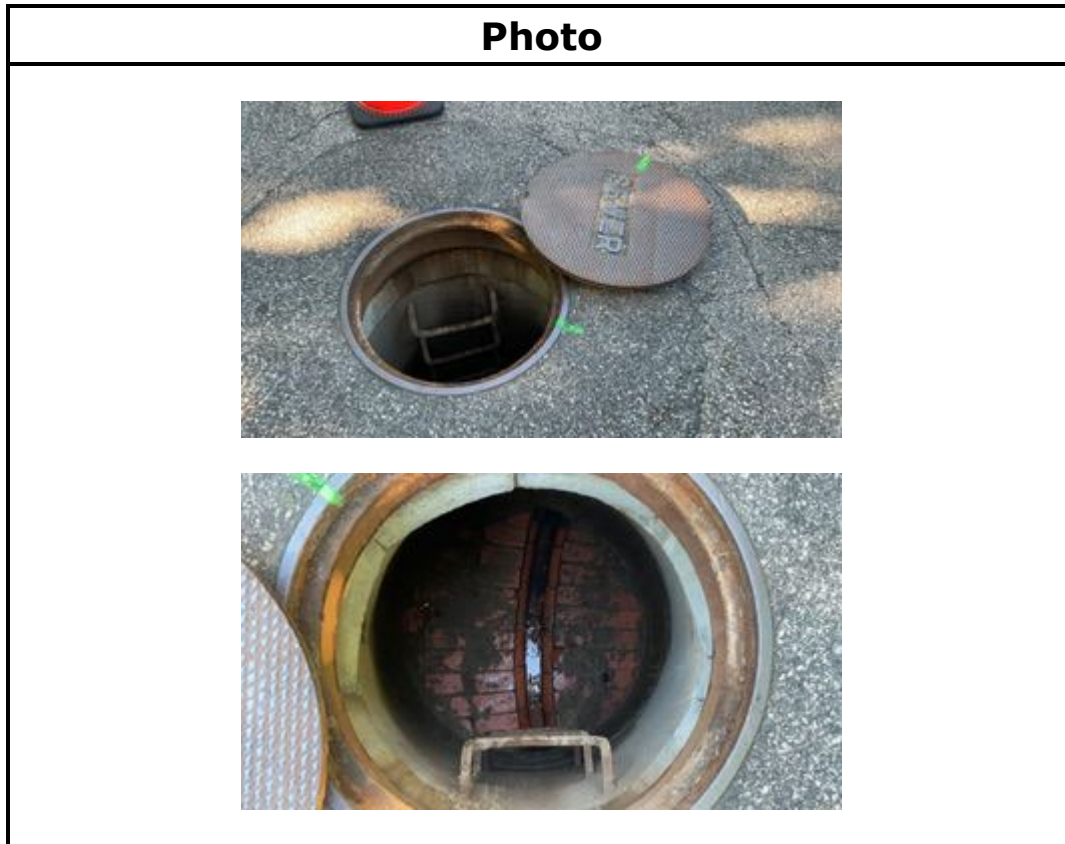
Manhole Information			
Cover Material	Cast Iron	Holes In Cover	Yes
Cover Condition	Sound	Number of Holes	2
Cover Defects		Hole Size (inches)	0.75
Cover Size (inches)	26	Grade	At Grade
Clear Opening Diameter	24	Surface Materials	Paved
Drainage Area (sqft)	4	Cracked Pavement Surrounding Frame	No
Cover Comments			

Internal Manhole Observations						
Item	Material	Condition	Infiltration?	Infiltration (GPM)	Defects	Comments
Frame	Cast Iron	Sound	No			
Chimney	Brick	Defective	No		MML, MB, HSV	
Cone	Precast	Sound	No			
Walls	Precast	Sound	No			
Steps	Present? Yes	# of Steps: 4		Material: Metal		
Bench	Brick	Sound	No			
	Bench Debris Depth (Inches): 1			Bench Debris: Sediment		
Channel	Brick	Sound	No			
	Channel Debris Depth (Inches): 1			Channel Debris: Sediment		
Surcharge from Invert Evident? No				Currently:		Marks To:
Additional Comments:						

Line Conditions												
In/Out	Compass Direction	Pipe Size	Pipe Material	Rim to Invert Depth	Condition	Flow Depth	Defects	Infiltration	Infiltration (GPM)	Debris	Debris Depth	Debris Material
Out	15/079	8"	ACP	6'4"	Sound	0.1"	No	No	N/A	No	N/A	N/A
Additional Comments:												

Westwood, MA Manhole Inspections
Manhole ID: 15/079
Westwood, MA

General Information			
Inspectors	BK, TA	Location (Street)	45 Olde Carriage Rd.
Date/Time	July 31, 2023 07:38	Meter Area	



Manhole Information			
Cover Material	Cast Iron	Holes In Cover	Yes
Cover Condition	Sound	Number of Holes	2
Cover Defects		Hole Size (inches)	0.75
Cover Size (inches)	26	Grade	At Grade
Clear Opening Diameter	24	Surface Materials	Paved
Drainage Area (sqft)	4	Cracked Pavement Surrounding Frame	No
Cover Comments			

Internal Manhole Observations						
Item	Material	Condition	Infiltration?	Infiltration (GPM)	Defects	Comments
Frame	Cast Iron	Sound	No			
Chimney	Brick, Block	Defective	No		MML	
Cone	Precast	Defective	No		Lift holes missing mortar	
Walls	Precast	Sound	No			
Steps	Present? Yes	# of Steps: 3		Material: Metal		
Bench	Brick	Sound	No			
	Bench Debris Depth (Inches): 0.25			Bench Debris: Sediment		
Channel	Brick	Sound	No			
	Channel Debris Depth (Inches):			Channel Debris:		
Surcharge from Invert Evident? No				Currently:	Marks To:	
Additional Comments:						

Line Conditions												
In/Out	Compass Direction	Pipe Size	Pipe Material	Rim to Invert Depth	Condition	Flow Depth	Defects	Infiltration	Infiltration (GPM)	Debris	Debris Depth	Debris Material
Out	15/078	8"	ACP	6'2"	Sound	0.1"	No	No	N/A	No	N/A	N/A
In	15/080	8"	ACP	6'1"	Sound	0.1"	No	No	N/A	No	N/A	N/A
Additional Comments:												

Westwood, MA Manhole Inspections
Manhole ID: 15/048
Westwood, MA

General Information			
Inspectors	BK, TA	Location (Street)	Bayley St. @ French St.
Date/Time	July 28, 2023 10:04	Meter Area	



Manhole Information			
Cover Material	Cast Iron	Holes In Cover	Yes
Cover Condition	Sound	Number of Holes	2
Cover Defects		Hole Size (inches)	0.75
Cover Size (inches)	26	Grade	At Grade
Clear Opening Diameter	24	Surface Materials	Paved
Drainage Area (sqft)	4	Cracked Pavement Surrounding Frame	No
Cover Comments			

Internal Manhole Observations						
Item	Material	Condition	Infiltration?	Infiltration (GPM)	Defects	Comments
Frame	Cast Iron	Sound	No			
Chimney	Parged	Sound	No			
Cone	Parged	Sound	No			
Walls	Parged	Sound	No			
Steps	Present? Yes	# of Steps: 7		Material: Metal		
Bench	Parged	Sound	No			
	Bench Debris Depth (Inches):			Bench Debris:		
Channel	Parged	Sound	No			
	Channel Debris Depth (Inches):			Channel Debris:		
Surcharge from Invert Evident? No				Currently:	Marks To:	
Additional Comments:						

Line Conditions												
In/Out	Compass Direction	Pipe Size	Pipe Material	Rim to Invert Depth	Condition	Flow Depth	Defects	Infiltration	Infiltration (GPM)	Debris	Debris Depth	Debris Material
Out	15/033	8"	ACP	9'11"	Sound	0.5"	No	No	N/A	No	N/A	N/A
In	15/047	8"	ACP	9'8"	Defective	0.5"	Pipe connection leak	Yes	0.25"	No	N/A	N/A
Additional Comments:												

Westwood, MA Manhole Inspections
Manhole ID: 15/113
Westwood, MA

General Information			
Inspectors	BK, TA	Location (Street)	60 Nahatan St.
Date/Time	July 28, 2023 09:27	Meter Area	



Manhole Information			
Cover Material	Cast Iron	Holes In Cover	No
Cover Condition	Sound	Number of Holes	
Cover Defects		Hole Size (inches)	
Cover Size (inches)	24	Grade	Above Grade
Clear Opening Diameter	22	Surface Materials	Grass, Dirt
Drainage Area (sqft)	4	Cracked Pavement Surrounding Frame	No
Cover Comments	Blind flange cover		

Internal Manhole Observations						
Item	Material	Condition	Infiltration?	Infiltration (GPM)	Defects	Comments
Frame	Cast Iron	Sound	No			
Chimney	Block	Defective	No		MML, RFB	
Cone	Precast	Sound	No			
Walls	Precast	Defective	No		RMB	
Steps	Present? Yes	# of Steps: 1		Material: Plastic		
Bench	Parged	Defective	No		RMJ	
	Bench Debris Depth (Inches): 0.25			Bench Debris: Sediment		
Channel	Brick, Parged	Sound	No			
	Channel Debris Depth (Inches):			Channel Debris:		
Surcharge from Invert Evident? No				Currently:		Marks To:
Additional Comments:						

Line Conditions												
In/Out	Compass Direction	Pipe Size	Pipe Material	Rim to Invert Depth	Condition	Flow Depth	Defects	Infiltration	Infiltration (GPM)	Debris	Debris Depth	Debris Material
Out	Southwest	6"	PVC	5'7"	Sound	0.1"	No	No	N/A	No	N/A	N/A
In	Northeast	6"	PVC	5'6"	Defective	0.1	RMJ	No	N/A	No	N/A	N/A
Additional Comments:												

Westwood, MA Manhole Inspections
Manhole ID: 15/107
Westwood, MA

General Information			
Inspectors	BK, TA	Location (Street)	200 Nahatan St.
Date/Time	July 28, 2023 08:21	Meter Area	



Manhole Information			
Cover Material	Cast Iron	Holes In Cover	Yes
Cover Condition	Sound	Number of Holes	2
Cover Defects		Hole Size (inches)	0.75
Cover Size (inches)	26	Grade	At Grade
Clear Opening Diameter	24	Surface Materials	Grass
Drainage Area (sqft)	4	Cracked Pavement Surrounding Frame	No
Cover Comments			



Internal Manhole Observations						
Item	Material	Condition	Infiltration?	Infiltration (GPM)	Defects	Comments
Frame	Cast Iron	Defective	No		SCP	
Chimney	Brick, Precast, Parged	Sound	No			Plastic sheeting around chimney
Cone		None	No			
Walls	Precast	Sound	No			
Steps	Present? Yes	# of Steps: 2		Material: Plastic		
Bench	Brick	Defective	No		MB, MMM	
	Bench Debris Depth (Inches): 2			Bench Debris: Sediment		
Channel	Brick	Sound	No			
	Channel Debris Depth (Inches): 1			Channel Debris: Sediment		
Surcharge from Invert Evident? No				Currently:		Marks To:
Additional Comments:						

Line Conditions												
In/Out	Compass Direction	Pipe Size	Pipe Material	Rim to Invert Depth	Condition	Flow Depth	Defects	Infiltration	Infiltration (GPM)	Debris	Debris Depth	Debris Material
Out	15/110	8"	PVC	6'8"	Sound	0"	No	No	N/A	Yes	0.5"	Sediment
In	East	6"	PVC	6'1"	Sound	0"	No	No	N/A	Yes	0.5"	Sediment
Additional Comments:												

Westwood, MA Manhole Inspections
Manhole ID: 15/110
Westwood, MA

General Information			
Inspectors	BK, TA	Location (Street)	200 Nahatan St.
Date/Time	July 28, 2023 08:15	Meter Area	



Manhole Information			
Cover Material	Cast Iron	Holes In Cover	Yes
Cover Condition	Sound	Number of Holes	2
Cover Defects		Hole Size (inches)	0.75
Cover Size (inches)	26	Grade	At Grade
Clear Opening Diameter	24	Surface Materials	Grass
Drainage Area (sqft)	4	Cracked Pavement Surrounding Frame	No
Cover Comments			

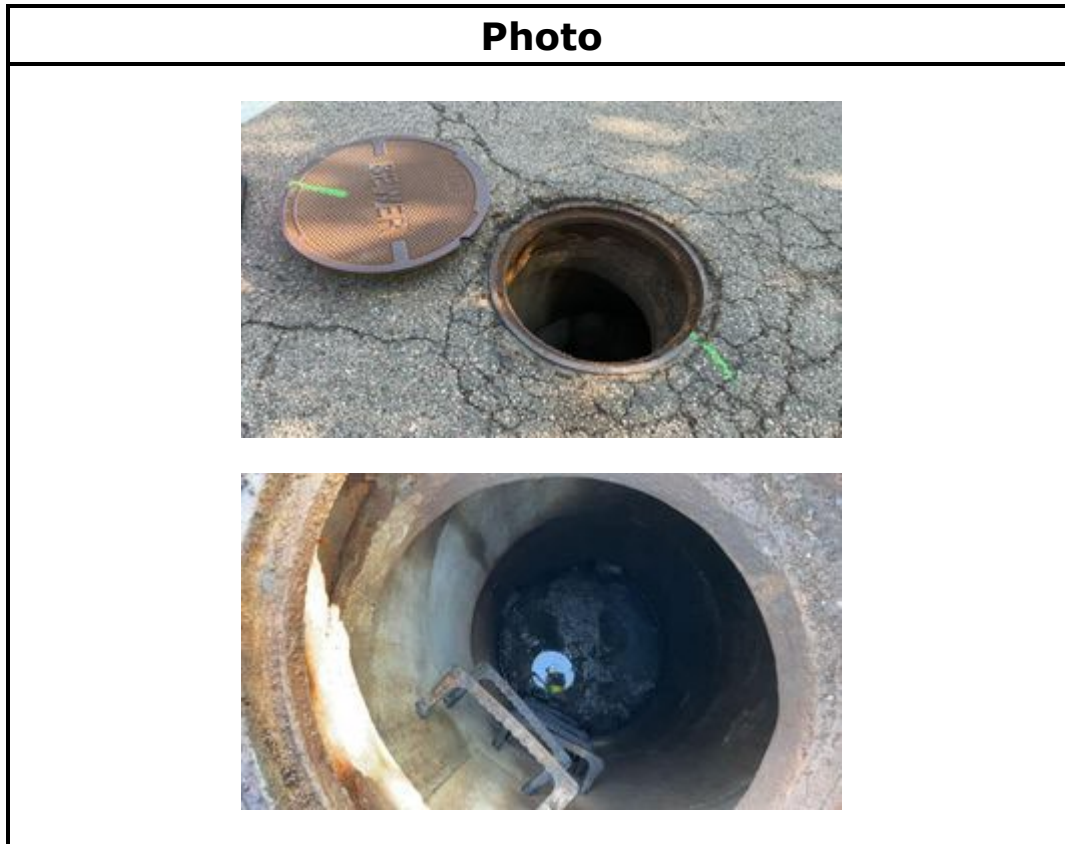


Internal Manhole Observations						
Item	Material	Condition	Infiltration?	Infiltration (GPM)	Defects	Comments
Frame	Cast Iron	Defective	No		SCP	
Chimney	Brick, Block, Precast	Sound	No			
Cone	Precast	Sound	No			
Walls	Precast	Sound	No			
Steps	Present? Yes	# of Steps: 3		Material: Plastic		
Bench	Brick	Sound	No			
	Bench Debris Depth (Inches): 2			Bench Debris: Sediment		
Channel	Brick	Sound	No			
	Channel Debris Depth (Inches):			Channel Debris:		
Surcharge from Invert Evident? No				Currently:		Marks To:
Additional Comments:						

Line Conditions												
In/Out	Compass Direction	Pipe Size	Pipe Material	Rim to Invert Depth	Condition	Flow Depth	Defects	Infiltration	Infiltration (GPM)	Debris	Debris Depth	Debris Material
Out	15/111	8"	PVC	7'1"	Sound	0"	No	No	N/A	Yes	0.25"	Sediment
In	15/107	8"	PVC	7'	Sound	0"	No	No	N/A	Yes	0.25"	Sediment
Additional Comments:												

Westwood, MA Manhole Inspections
Manhole ID: 15/112
Westwood, MA

General Information			
Inspectors	BK, TA	Location (Street)	200 Nahatan St.
Date/Time	July 28, 2023 07:59	Meter Area	



Manhole Information			
Cover Material	Cast Iron	Holes In Cover	Yes
Cover Condition	Sound	Number of Holes	2
Cover Defects		Hole Size (inches)	0.75
Cover Size (inches)	26	Grade	At Grade
Clear Opening Diameter	24	Surface Materials	Paved
Drainage Area (sqft)	4	Cracked Pavement Surrounding Frame	Yes
Cover Comments			

Internal Manhole Observations						
Item	Material	Condition	Infiltration?	Infiltration (GPM)	Defects	Comments
Frame	Cast Iron	Defective	No		Offset 3"	
Chimney	Precast	Sound	No			
Cone	Precast	Sound	No			
Walls	Precast	Sound	No			
Steps	Present? Yes	# of Steps: 7		Material: Plastic		
Bench	Poured in place	Sound	No			
	Bench Debris Depth (Inches): 1			Bench Debris: Sanitary, Sediment		
Channel		None	No			
	Channel Debris Depth (Inches):			Channel Debris:		
Surcharge from Invert Evident? No				Currently:	Marks To:	
Additional Comments:						

Line Conditions												
In/Out	Compass Direction	Pipe Size	Pipe Material	Rim to Invert Depth	Condition	Flow Depth	Defects	Infiltration	Infiltration (GPM)	Debris	Debris Depth	Debris Material
Out	15/005	8"	PVC	10'3"	Defective	0.1"	Pipe connection missing mortar	No	N/A	Yes	0.25"	Sanitary
In	15/111	8"	PVC	10'1"	Defective	0.1"	Pipe connection missing mortar	No	N/A	No	N/A	N/A
In	15/008	8"	PVC	10'1"	Defective	0.1"	Pipe connection missing mortar	No	N/A	No	N/A	N/A
Additional Comments:												

Westwood, MA Manhole Inspections Manhole ID: 15/109 Westwood, MA

General Information			
Inspectors	BK, TA	Location (Street)	200 Nahatan St.
Date/Time	July 28, 2023 07:47	Meter Area	



Manhole Information			
Cover Material	Cast Iron	Holes In Cover	Yes
Cover Condition	Sound	Number of Holes	2
Cover Defects		Hole Size (inches)	0.5
Cover Size (inches)	26	Grade	At Grade
Clear Opening Diameter	24	Surface Materials	Grass
Drainage Area (sqft)	4	Cracked Pavement Surrounding Frame	No
Cover Comments			

Internal Manhole Observations						
Item	Material	Condition	Infiltration?	Infiltration (GPM)	Defects	Comments
Frame	Cast Iron	Sound	No			
Chimney	Brick, Precast	Sound	No			
Cone		None	No			
Walls	Precast	Defective	No		Lift holes missing mortar	
Steps	Present? Yes	# of Steps: 5		Material: Plastic		
Bench	Brick	Sound	No			
	Bench Debris Depth (Inches):			Bench Debris:		
Channel	Brick	Sound	No			
	Channel Debris Depth (Inches):			Channel Debris:		
Surcharge from Invert Evident? No				Currently:		Marks To:
Additional Comments:						

Line Conditions												
In/Out	Compass Direction	Pipe Size	Pipe Material	Rim to Invert Depth	Condition	Flow Depth	Defects	Infiltration	Infiltration (GPM)	Debris	Debris Depth	Debris Material
Out	15/108	8"	ACP	8'	Defective	0"	Pipe connection missing mortar	No	N/A	Yes	1"	Sanitary
In	East	6"	PVC	6'11"	Defective	0"	Pipe connection missing mortar	No	N/A	No	N/A	N/A
Additional Comments:												

Westwood, MA Manhole Inspections
Manhole ID: 15/007
Westwood, MA

General Information			
Inspectors	BK, TA	Location (Street)	200 Nahatan St.
Date/Time	July 28, 2023 07:38	Meter Area	



Manhole Information			
Cover Material	Cast Iron	Holes In Cover	Yes
Cover Condition	Sound	Number of Holes	2
Cover Defects	Flood cover installed	Hole Size (inches)	0.5
Cover Size (inches)	26	Grade	At Grade
Clear Opening Diameter	24	Surface Materials	Grass
Drainage Area (sqft)	4	Cracked Pavement Surrounding Frame	No
Cover Comments			



Associates, Inc.

Environmental Monitoring
Pipeline Services
Operations & Maintenance

Internal Manhole Observations						
Item	Material	Condition	Infiltration?	Infiltration (GPM)	Defects	Comments
Frame	Cast Iron	Sound	No			
Chimney	Brick, Precast	Defective	No		RFJ	
Cone	Precast	Sound	No			
Walls	Precast	Sound	No			
Steps	Present? Yes	# of Steps: 5		Material: Metal		
Bench	Brick	Sound	No			
	Bench Debris Depth (Inches):			Bench Debris:		
Channel	Brick	Sound	No			
	Channel Debris Depth (Inches):			Channel Debris:		
Surcharge from Invert Evident? No				Currently:		Marks To:
Additional Comments:						

Line Conditions												
In/Out	Compass Direction	Pipe Size	Pipe Material	Rim to Invert Depth	Condition	Flow Depth	Defects	Infiltration	Infiltration (GPM)	Debris	Debris Depth	Debris Material
Out	15/006	8"	ACP	9'5"	Sound	0.5"	No	No	N/A	No	N/A	N/A
In	Northeast	8"	ACP	9'4"	Sound	0.25"	No	No	N/A	No	N/A	N/A
In	East	8"	ACP	9'4"	Sound	0.25"	No	No	N/A	No	N/A	N/A
Additional Comments:												

Westwood, MA Manhole Inspections
Manhole ID: 15/031
Westwood, MA

General Information			
Inspectors	BK, TA	Location (Street)	123 Fisher St.
Date/Time	July 27, 2023 12:44	Meter Area	



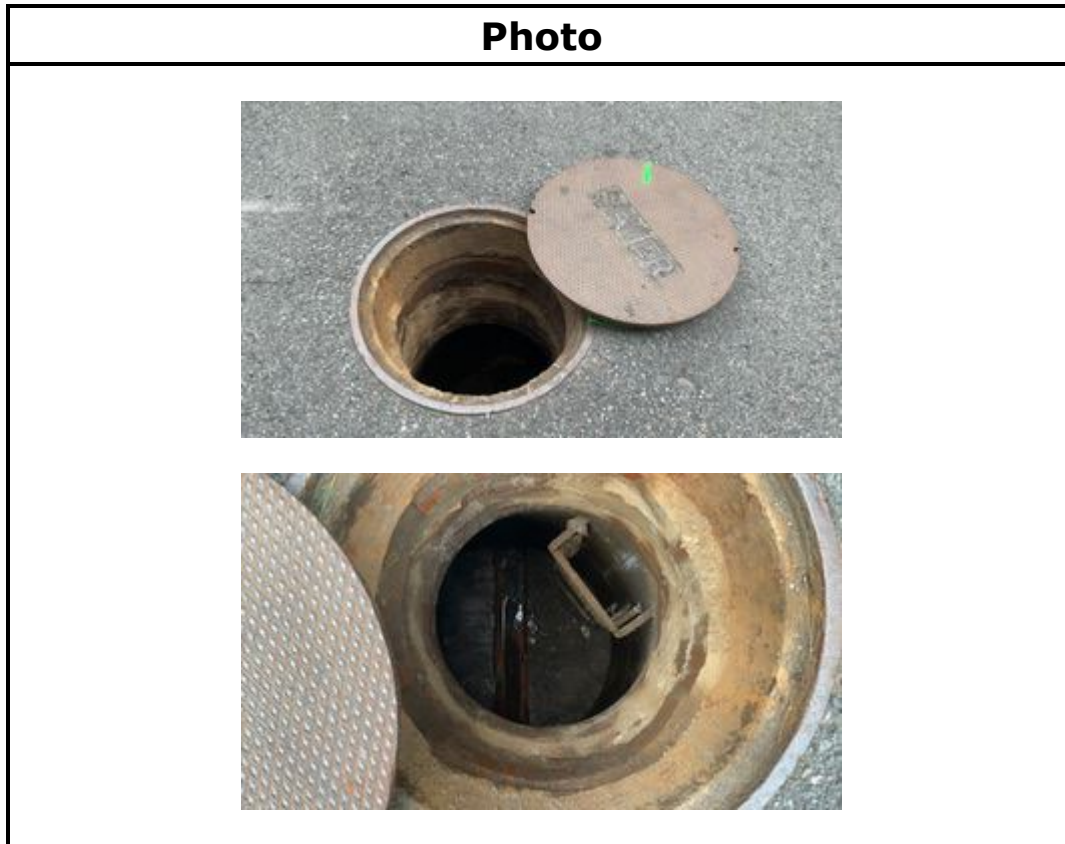
Manhole Information			
Cover Material	Cast Iron	Holes In Cover	Yes
Cover Condition	Sound	Number of Holes	2
Cover Defects		Hole Size (inches)	0.75
Cover Size (inches)	26	Grade	At Grade
Clear Opening Diameter	24	Surface Materials	Paved
Drainage Area (sqft)	4	Cracked Pavement Surrounding Frame	No
Cover Comments			

Internal Manhole Observations						
Item	Material	Condition	Infiltration?	Infiltration (GPM)	Defects	Comments
Frame	Cast Iron	Sound	No			
Chimney	Brick	Sound	No			
Cone	Precast	Sound	No			
Walls	Precast	Sound	No			
Steps	Present? Yes	# of Steps: 3		Material: Metal		
Bench	Brick, Parged	Sound	No			
	Bench Debris Depth (Inches):			Bench Debris:		
Channel	Brick	Sound	No			
	Channel Debris Depth (Inches):			Channel Debris:		
Surcharge from Invert Evident? No				Currently:	Marks To:	
Additional Comments:						

Line Conditions												
In/Out	Compass Direction	Pipe Size	Pipe Material	Rim to Invert Depth	Condition	Flow Depth	Defects	Infiltration	Infiltration (GPM)	Debris	Debris Depth	Debris Material
Out	15/032	8"	ACP	6'10"	Sound	0.25"	No	No	N/A	No	N/A	N/A
In	15/030	8"	ACP	6'9"	Sound	0.25"	No	No	N/A	No	N/A	N/A
Additional Comments:												

Westwood, MA Manhole Inspections
Manhole ID: 15/044
Westwood, MA

General Information			
Inspectors	BK, TA	Location (Street)	31 Bayley St.
Date/Time	July 27, 2023 11:28	Meter Area	



Manhole Information			
Cover Material	Cast Iron	Holes In Cover	Yes
Cover Condition	Sound	Number of Holes	2
Cover Defects		Hole Size (inches)	0.75
Cover Size (inches)	26	Grade	At Grade
Clear Opening Diameter	24	Surface Materials	Paved
Drainage Area (sqft)	4	Cracked Pavement Surrounding Frame	No
Cover Comments			



Associates, Inc.

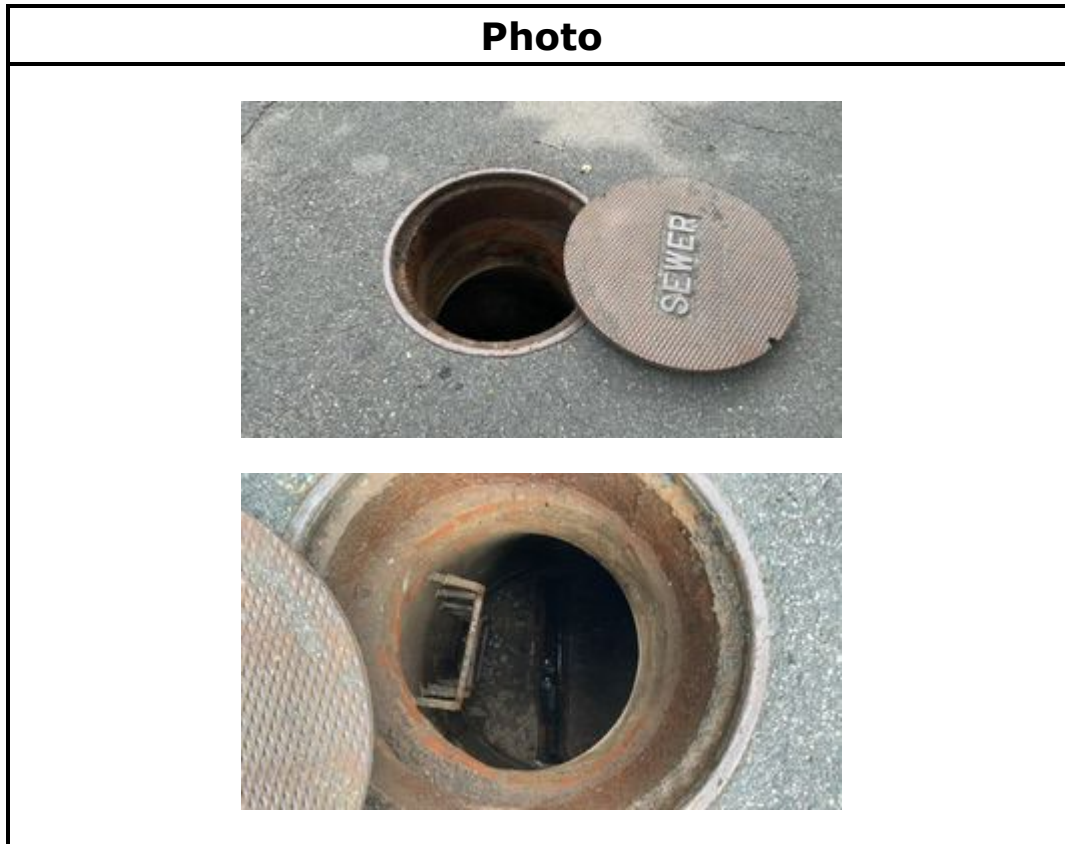
Environmental Monitoring
Pipeline Services
Operations & Maintenance

Internal Manhole Observations						
Item	Material	Condition	Infiltration?	Infiltration (GPM)	Defects	Comments
Frame	Cast Iron	Sound	No			
Chimney	Brick, Parged	Sound	No			
Cone	Precast	Sound	No			
Walls	Precast	Sound	No			
Steps	Present? Yes	# of Steps: 4		Material: Metal		
Bench	Brick	Sound	No			
	Bench Debris Depth (Inches): 0.5			Bench Debris: Sediment		
Channel	Brick	Sound	No			
	Channel Debris Depth (Inches): 0.25			Channel Debris: Sediment		
Surcharge from Invert Evident? No				Currently:		Marks To:
Additional Comments:						

Line Conditions												
In/Out	Compass Direction	Pipe Size	Pipe Material	Rim to Invert Depth	Condition	Flow Depth	Defects	Infiltration	Infiltration (GPM)	Debris	Debris Depth	Debris Material
Out	15/045	8"	ACP	7'10"	Defective	0.1	Pipe connection leak	Yes	0.01"	No	N/A	N/A
Additional Comments:												

Westwood, MA Manhole Inspections Manhole ID: 15/045 Westwood, MA

General Information			
Inspectors	BK, TA	Location (Street)	42 Bayley St.
Date/Time	July 27, 2023 11:23	Meter Area	



Manhole Information			
Cover Material	Cast Iron	Holes In Cover	Yes
Cover Condition	Sound	Number of Holes	2
Cover Defects		Hole Size (inches)	0.75
Cover Size (inches)	26	Grade	At Grade
Clear Opening Diameter	24	Surface Materials	Paved
Drainage Area (sqft)	4	Cracked Pavement Surrounding Frame	No
Cover Comments			



Associates, Inc.

Environmental Monitoring
Pipeline Services
Operations & Maintenance

Internal Manhole Observations						
Item	Material	Condition	Infiltration?	Infiltration (GPM)	Defects	Comments
Frame	Cast Iron	Sound	No			
Chimney	Brick, Precast	Sound	No			
Cone	Precast	Sound	No			
Walls	Precast	Sound	No			
Steps	Present? Yes	# of Steps: 5		Material: Metal		
Bench	Brick, Parged	Sound	No			
	Bench Debris Depth (Inches):			Bench Debris:		
Channel	Brick	Sound	No			
	Channel Debris Depth (Inches):			Channel Debris:		
Surcharge from Invert Evident? No				Currently:		Marks To:
Additional Comments:						

Line Conditions												
In/Out	Compass Direction	Pipe Size	Pipe Material	Rim to Invert Depth	Condition	Flow Depth	Defects	Infiltration	Infiltration (GPM)	Debris	Debris Depth	Debris Material
Out	15/046	8"	ACP	8'3"	Sound	0.25"	No	No	N/A	No	N/A	N/A
In	15/044	8"	ACP	8'2"	Sound	0.25"	No	No	N/A	No	N/A	N/A
Additional Comments:												

Westwood, MA Manhole Inspections
Manhole ID: 15/057
Westwood, MA

General Information			
Inspectors	BK, TA	Location (Street)	Stearns St. @ Bonney St.
Date/Time	July 27, 2023 11:05	Meter Area	



Manhole Information			
Cover Material	Cast Iron	Holes In Cover	Yes
Cover Condition	Sound	Number of Holes	2
Cover Defects		Hole Size (inches)	0.75
Cover Size (inches)	26	Grade	At Grade
Clear Opening Diameter	24	Surface Materials	Paved
Drainage Area (sqft)	4	Cracked Pavement Surrounding Frame	No
Cover Comments			

Internal Manhole Observations						
Item	Material	Condition	Infiltration?	Infiltration (GPM)	Defects	Comments
Frame	Cast Iron	Sound	No			
Chimney	Brick, Parged	Defective	No		MMM	
Cone	Precast	Sound	No			
Walls	Precast	Sound	No			
Steps	Present? Yes	# of Steps: 4		Material: Metal		
Bench	Brick, Parged	Sound	No			
	Bench Debris Depth (Inches):			Bench Debris:		
Channel	Brick	Sound	No			
	Channel Debris Depth (Inches):			Channel Debris:		
Surcharge from Invert Evident? No				Currently:	Marks To:	
Additional Comments:						

Line Conditions												
In/Out	Compass Direction	Pipe Size	Pipe Material	Rim to Invert Depth	Condition	Flow Depth	Defects	Infiltration	Infiltration (GPM)	Debris	Debris Depth	Debris Material
Out	15/046	8"	ACP	7'10"	Sound	0.1"	No	No	N/A	No	N/A	N/A
In	15/056	8"	ACP	7'9"	Sound	0.1"	No	No	N/A	No	N/A	N/A
Additional Comments:												

Westwood, MA Manhole Inspections
Manhole ID: 15/056
Westwood, MA

General Information			
Inspectors	BK, TA	Location (Street)	78 Stearns St.
Date/Time	July 27, 2023 10:54	Meter Area	



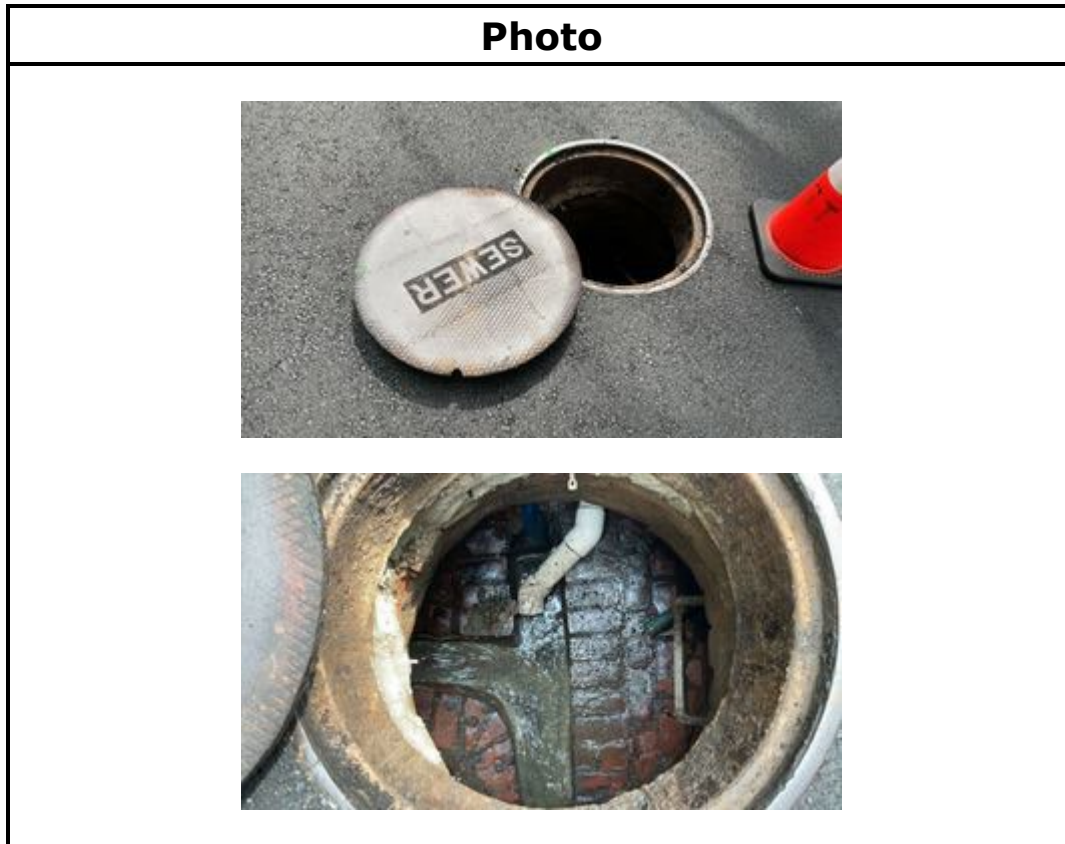
Manhole Information			
Cover Material	Cast Iron	Holes In Cover	Yes
Cover Condition	Sound	Number of Holes	2
Cover Defects		Hole Size (inches)	0.75
Cover Size (inches)	26	Grade	At Grade
Clear Opening Diameter	24	Surface Materials	Paved
Drainage Area (sqft)	4	Cracked Pavement Surrounding Frame	No
Cover Comments			

Internal Manhole Observations						
Item	Material	Condition	Infiltration?	Infiltration (GPM)	Defects	Comments
Frame	Cast Iron	Sound	No			
Chimney	Brick, Precast	Defective	No		MMS	
Cone	Precast	Sound	No			
Walls	Precast	Sound	No			
Steps	Present? Yes	# of Steps: 4		Material: Metal		
Bench	Brick	Sound	No			
	Bench Debris Depth (Inches): 0.75			Bench Debris: Sediment		
Channel	Brick	Sound	No			
	Channel Debris Depth (Inches): 0.75			Channel Debris: Sediment		
Surcharge from Invert Evident? No				Currently:	Marks To:	
Additional Comments:						

Line Conditions												
In/Out	Compass Direction	Pipe Size	Pipe Material	Rim to Invert Depth	Condition	Flow Depth	Defects	Infiltration	Infiltration (GPM)	Debris	Debris Depth	Debris Material
Out	15/057	8"	ACP	7'4"	Sound	0"	No	No	N/A	No	N/A	N/A
Additional Comments:												

Westwood, MA Manhole Inspections
Manhole ID: 15/081
Westwood, MA

General Information			
Inspectors	BK, TA	Location (Street)	Clapboardtree St. @ Dela Park Rd.
Date/Time	July 27, 2023 10:05	Meter Area	



Manhole Information			
Cover Material	Cast Iron	Holes In Cover	Yes
Cover Condition	Sound	Number of Holes	2
Cover Defects		Hole Size (inches)	0.75
Cover Size (inches)	26	Grade	At Grade
Clear Opening Diameter	24	Surface Materials	Paved
Drainage Area (sqft)	4	Cracked Pavement Surrounding Frame	No
Cover Comments			

Internal Manhole Observations						
Item	Material	Condition	Infiltration?	Infiltration (GPM)	Defects	Comments
Frame	Cast Iron	Sound	No			
Chimney	Brick	Defective	No		MMM	
Cone	Brick	Defective	No		MMM	
Walls	Brick	Defective	No		MMM	
Steps	Present? Yes	# of Steps: 1		Material: Metal		
Bench	Brick	Sound	No			
	Bench Debris Depth (Inches):			Bench Debris:		
Channel	Brick	Sound	No			
	Channel Debris Depth (Inches):			Channel Debris:		
Surcharge from Invert Evident? No				Currently:	Marks To:	
Additional Comments:						

Line Conditions												
In/Out	Compass Direction	Pipe Size	Pipe Material	Rim to Invert Depth	Condition	Flow Depth	Defects	Infiltration	Infiltration (GPM)	Debris	Debris Depth	Debris Material
Out	15/082	8"	ACP	4'10"	Sound	3.5"	No	No	N/A	No	N/A	N/A
In	15/062	8"	ACP	4'9"	Sound	3"	No	No	N/A	No	N/A	N/A
In	15/069	4"	PVC	4'9"	Sound	0"	No	No	N/A	No	N/A	N/A
In	Southeast 1	2"	PVC	4'6"	Sound	0"	No	No	N/A	No	N/A	N/A
In	Southeast 2	2"	PVC	4'4"	Sound	0"	No	No	N/A	No	N/A	N/A
Additional Comments: In (Southeast 1) is a force main.												

Westwood, MA Manhole Inspections
Manhole ID: 15/012
Westwood, MA

General Information			
Inspectors	BK, TA	Location (Street)	209 Nahatan St.
Date/Time	July 27, 2023 09:53	Meter Area	



Manhole Information			
Cover Material	Cast Iron	Holes In Cover	Yes
Cover Condition	Sound	Number of Holes	2
Cover Defects		Hole Size (inches)	0.75
Cover Size (inches)	26	Grade	At Grade
Clear Opening Diameter	24	Surface Materials	Paved
Drainage Area (sqft)	4	Cracked Pavement Surrounding Frame	Yes
Cover Comments			

Internal Manhole Observations						
Item	Material	Condition	Infiltration?	Infiltration (GPM)	Defects	Comments
Frame	Cast Iron	Defective	No		Offset 2 inches	
Chimney	Precast	Sound	No			
Cone	Precast	Sound	No			
Walls	Precast	Sound	No			
Steps	Present? Yes	# of Steps: 4		Material: Metal		
Bench	Poured in place	Sound	No			
	Bench Debris Depth (Inches): 1			Bench Debris: Sediment		
Channel	ACP	Sound	No			
	Channel Debris Depth (Inches):			Channel Debris:		
Surcharge from Invert Evident? No				Currently:		Marks To:
Additional Comments:						

Line Conditions												
In/Out	Compass Direction	Pipe Size	Pipe Material	Rim to Invert Depth	Condition	Flow Depth	Defects	Infiltration	Infiltration (GPM)	Debris	Debris Depth	Debris Material
Out	15/011	8"	ACP	6'8"	Sound	0"	No	No	N/A	No	N/A	N/A
In	Southeast	8"	ACP	6'7"	Sound	0"	No	No	N/A	No	N/A	N/A
Additional Comments:												

Westwood, MA Manhole Inspections Manhole ID: 15/011 Westwood, MA

General Information			
Inspectors	BK, TA	Location (Street)	197 Nahatan St.
Date/Time	July 27, 2023 09:36	Meter Area	



Manhole Information			
Cover Material	Cast Iron	Holes In Cover	Yes
Cover Condition	Sound	Number of Holes	2
Cover Defects		Hole Size (inches)	0.75
Cover Size (inches)	26	Grade	At Grade
Clear Opening Diameter	24	Surface Materials	Paved
Drainage Area (sqft)	4	Cracked Pavement Surrounding Frame	Yes
Cover Comments			

Internal Manhole Observations						
Item	Material	Condition	Infiltration?	Infiltration (GPM)	Defects	Comments
Frame	Cast Iron	Sound	No			
Chimney	Precast	Sound	No			
Cone	Precast	Sound	No			
Walls	Precast	Defective	Yes	0.01	IRJ	
Steps	Present? Yes	# of Steps: 5		Material: Metal		
Bench	Poured in place	Sound	No			
	Bench Debris Depth (Inches): 2			Bench Debris: Sediment		
Channel	ACP	Sound	No			
	Channel Debris Depth (Inches):			Channel Debris:		
Surcharge from Invert Evident? No				Currently:		Marks To:
Additional Comments:						

Line Conditions												
In/Out	Compass Direction	Pipe Size	Pipe Material	Rim to Invert Depth	Condition	Flow Depth	Defects	Infiltration	Infiltration (GPM)	Debris	Debris Depth	Debris Material
Out	15/009A	8"	ACP	Sound	8'4"	0.1"	No	No	N/A	No	N/A	N/A
In	15/012	8"	ACP	Sound	8'3"	0.1"	No	No	N/A	No	N/A	N/A
Additional Comments:												

Westwood, MA Manhole Inspections
Manhole ID: 15/006
Westwood, MA

General Information			
Inspectors	BK, TA	Location (Street)	165 Nahatan St.
Date/Time	July 27, 2023 09:03	Meter Area	



Manhole Information			
Cover Material	Cast Iron	Holes In Cover	Yes
Cover Condition	Sound	Number of Holes	2
Cover Defects		Hole Size (inches)	0.75
Cover Size (inches)	26	Grade	At Grade
Clear Opening Diameter	24	Surface Materials	Paved
Drainage Area (sqft)	4	Cracked Pavement Surrounding Frame	Yes
Cover Comments			



Internal Manhole Observations						
Item	Material	Condition	Infiltration?	Infiltration (GPM)	Defects	Comments
Frame	Cast Iron	Sound	No			
Chimney	Brick, Parged	Sound	No			
Cone	Parged	Sound	No			
Walls	Parged	Defective	Yes	0.01	IR	
Steps	Present? Yes	# of Steps: 6		Material: Metal		
Bench	Parged	Sound	No			
	Bench Debris Depth (Inches):			Bench Debris:		
Channel	Brick, Poured in place	Sound	No			
	Channel Debris Depth (Inches):			Channel Debris:		
Surcharge from Invert Evident? No				Currently:	Marks To:	
Additional Comments:						

Line Conditions												
In/Out	Compass Direction	Pipe Size	Pipe Material	Rim to Invert Depth	Condition	Flow Depth	Defects	Infiltration	Infiltration (GPM)	Debris	Debris Depth	Debris Material
Out	15/005	8"	ACP	8'9"	Sound	0.75"	No	No	N/A	No	N/A	N/A
In	15/007	8"	ACP	8'2"	Defective	0.25"	Pipe connection leak	Yes	0.25"	No	N/A	N/A
In	15/009	8"	ACP	8'8"	Sound	0.5"	No	No	N/A	No	N/A	N/A
Additional Comments:												

Westwood, MA Manhole Inspections
Manhole ID: 15/004
Westwood, MA

General Information			
Inspectors	BK, TA	Location (Street)	115 Nahatan St.
Date/Time	July 27, 2023 08:45	Meter Area	



Manhole Information			
Cover Material	Cast Iron	Holes In Cover	Yes
Cover Condition	Sound	Number of Holes	2
Cover Defects		Hole Size (inches)	0.75
Cover Size (inches)	26	Grade	At Grade
Clear Opening Diameter	24	Surface Materials	Paved
Drainage Area (sqft)	4	Cracked Pavement Surrounding Frame	Yes
Cover Comments			

Internal Manhole Observations						
Item	Material	Condition	Infiltration?	Infiltration (GPM)	Defects	Comments
Frame	Cast Iron	Sound	No			
Chimney	Brick, Block	Sound	No			
Cone	Precast	Sound	No			
Walls	Precast	Sound	No			
Steps	Present? Yes	# of Steps: 5		Material: Metal		
Bench	Poured in place	Sound	No			
	Bench Debris Depth (Inches): 0.5			Bench Debris: Sediment		
Channel	Poured in place	Sound	No			
	Channel Debris Depth (Inches):			Channel Debris:		
Surcharge from Invert Evident? No				Currently:		Marks To:
Additional Comments:						

Line Conditions												
In/Out	Compass Direction	Pipe Size	Pipe Material	Rim to Invert Depth	Condition	Flow Depth	Defects	Infiltration	Infiltration (GPM)	Debris	Debris Depth	Debris Material
Out	15/005	8"	ACP	8'7"	Sound	0.75"	No	No	N/A	No	N/A	N/A
In	15/003	8"	ACP	8'6"	Sound	0.75"	No	No	N/A	No	N/A	N/A
Additional Comments:												

Westwood, MA Manhole Inspections
Manhole ID: 15/003
Westwood, MA

General Information			
Inspectors	BK, TA	Location (Street)	97 Nahatan St.
Date/Time	July 27, 2023 08:35	Meter Area	



Manhole Information			
Cover Material	Cast Iron	Holes In Cover	Yes
Cover Condition	Sound	Number of Holes	2
Cover Defects		Hole Size (inches)	0.75
Cover Size (inches)	26	Grade	At Grade
Clear Opening Diameter	24	Surface Materials	Paved
Drainage Area (sqft)	4	Cracked Pavement Surrounding Frame	Yes
Cover Comments			

Internal Manhole Observations						
Item	Material	Condition	Infiltration?	Infiltration (GPM)	Defects	Comments
Frame	Cast Iron	Sound	No			
Chimney	Brick	Sound	No			
Cone	Precast	Sound	No			
Walls	Precast	Sound	No			
Steps	Present? Yes	# of Steps: 5		Material: Metal		
Bench	Poured in place	Sound	No			
	Bench Debris Depth (Inches):			Bench Debris:		
Channel	Poured in place	Sound	No			
	Channel Debris Depth (Inches):			Channel Debris:		
Surcharge from Invert Evident? No				Currently:		Marks To:
Additional Comments:						

Line Conditions												
In/Out	Compass Direction	Pipe Size	Pipe Material	Rim to Invert Depth	Condition	Flow Depth	Defects	Infiltration	Infiltration (GPM)	Debris	Debris Depth	Debris Material
Out	15/004	8"	ACP	8'9"	Sound	0.75"	No	No	N/A	No	N/A	N/A
In	15/002	8"	ACP	8'8"	Sound	0.5"	No	No	N/A	No	N/A	N/A
In	15/115	8"	PVC	8'	Sound	0.25"	No	No	N/A	No	N/A	N/A
Additional Comments:												

Westwood, MA Manhole Inspections
Manhole ID: 15/002
Westwood, MA

General Information			
Inspectors	BK, TA	Location (Street)	Nahatan St. @ Baker St.
Date/Time	July 27, 2023 08:25	Meter Area	



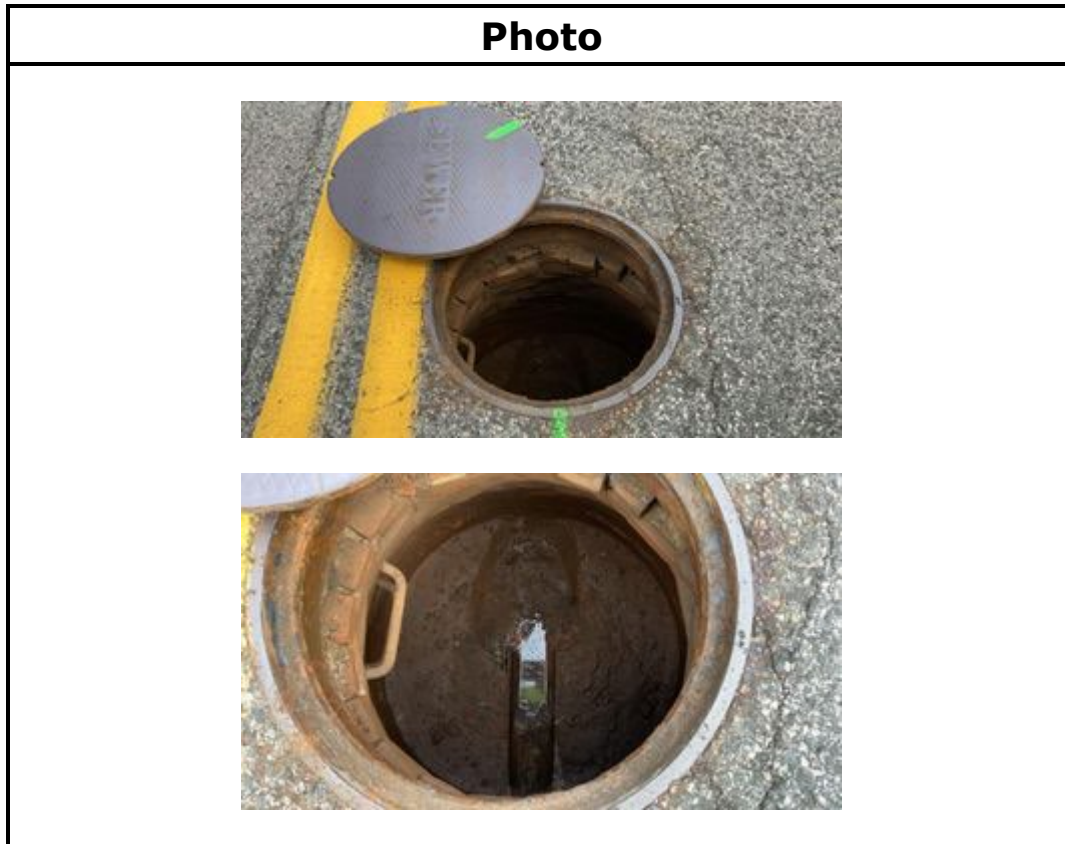
Manhole Information			
Cover Material	Cast Iron	Holes In Cover	Yes
Cover Condition	Sound	Number of Holes	2
Cover Defects		Hole Size (inches)	0.75
Cover Size (inches)	26	Grade	At Grade
Clear Opening Diameter	24	Surface Materials	Paved
Drainage Area (sqft)	4	Cracked Pavement Surrounding Frame	No
Cover Comments			

Internal Manhole Observations						
Item	Material	Condition	Infiltration?	Infiltration (GPM)	Defects	Comments
Frame	Cast Iron	Sound	No			
Chimney	Brick	Defective	No		MMM	
Cone	Brick	Sound	No			
Walls	Brick, Precast	Sound	No			
Steps	Present? Yes	# of Steps: 2		Material: Metal		
Bench	Poured in place	Sound	No			
	Bench Debris Depth (Inches):			Bench Debris:		
Channel	ACP	Sound	No			
	Channel Debris Depth (Inches):			Channel Debris:		
Surcharge from Invert Evident? No				Currently:	Marks To:	
Additional Comments:						

Line Conditions												
In/Out	Compass Direction	Pipe Size	Pipe Material	Rim to Invert Depth	Condition	Flow Depth	Defects	Infiltration	Infiltration (GPM)	Debris	Debris Depth	Debris Material
Out	15/003	8"	ACP	5'4"	Sound	0"	No	No	N/A	No	N/A	N/A
In	15/001	8"	ACP	5'3"	Sound	0"	No	No	N/A	No	N/A	N/A
Additional Comments:												

Westwood, MA Manhole Inspections Manhole ID: 15/001 Westwood, MA

General Information			
Inspectors	BK, TA	Location (Street)	210 Nahatan St.
Date/Time	July 27, 2023 08:13	Meter Area	



Manhole Information			
Cover Material	Cast Iron	Holes In Cover	Yes
Cover Condition	Sound	Number of Holes	2
Cover Defects		Hole Size (inches)	0.75
Cover Size (inches)	26	Grade	At Grade
Clear Opening Diameter	24	Surface Materials	Paved
Drainage Area (sqft)	4	Cracked Pavement Surrounding Frame	Yes
Cover Comments			

Internal Manhole Observations						
Item	Material	Condition	Infiltration?	Infiltration (GPM)	Defects	Comments
Frame	Cast Iron	Sound	No			
Chimney	Brick	Defective	No		MML, MB	
Cone	Brick	Defective	No		MMS	
Walls	Brick, Precast	Sound	No			
Steps	Present? Yes	# of Steps: 2		Material: Metal		
Bench	Poured in place	Sound	No			
	Bench Debris Depth (Inches): 0.5			Bench Debris: Sediment		
Channel	Poured in place, ACP	Sound	No			
	Channel Debris Depth (Inches): 0.75			Channel Debris: Sediment		
Surcharge from Invert Evident? No				Currently:	Marks To:	
Additional Comments:						

Line Conditions												
In/Out	Compass Direction	Pipe Size	Pipe Material	Rim to Invert Depth	Condition	Flow Depth	Defects	Infiltration	Infiltration (GPM)	Debris	Debris Depth	Debris Material
Out	15/002	8"	ACP	5'	Sound	0"	No	No	N/A	No	N/A	N/A
Additional Comments:												

Westwood, MA Manhole Inspections
Manhole ID: 15/049
Westwood, MA

General Information			
Inspectors	BK, TA	Location (Street)	16 Willow St.
Date/Time	July 26, 2023 13:18	Meter Area	



Manhole Information			
Cover Material	Cast Iron	Holes In Cover	Yes
Cover Condition	Sound	Number of Holes	2
Cover Defects		Hole Size (inches)	0.75
Cover Size (inches)	26	Grade	At Grade
Clear Opening Diameter	24	Surface Materials	Paved
Drainage Area (sqft)	4	Cracked Pavement Surrounding Frame	No
Cover Comments			

Internal Manhole Observations						
Item	Material	Condition	Infiltration?	Infiltration (GPM)	Defects	Comments
Frame	Cast Iron	Sound	No			
Chimney	Brick	Sound	No			
Cone	Parged	Defective	No		Lift holes missing mortar	
Walls	Precast	Defective	No		Lift holes missing mortar	
Steps	Present? Yes	# of Steps: 5		Material: Metal		
Bench	Brick	Sound	No			
	Bench Debris Depth (Inches): 2			Bench Debris: Sediment		
Channel	Brick	Sound	No			
	Channel Debris Depth (Inches): 0.5			Channel Debris: Sediment		
Surcharge from Invert Evident? No				Currently:		Marks To:
Additional Comments:						

Line Conditions												
In/Out	Compass Direction	Pipe Size	Pipe Material	Rim to Invert Depth	Condition	Flow Depth	Defects	Infiltration	Infiltration (GPM)	Debris	Debris Depth	Debris Material
Out	15/050	8"	ACP	8'2"	Sound	0"	No	No	N/A	No	N/A	N/A
Additional Comments:												

Westwood, MA Manhole Inspections
Manhole ID: 15/052
Westwood, MA

General Information			
Inspectors	BK, TA	Location (Street)	77 Colburn St.
Date/Time	July 26, 2023 12:46	Meter Area	



Manhole Information			
Cover Material	Cast Iron	Holes In Cover	Yes
Cover Condition	Sound	Number of Holes	2
Cover Defects		Hole Size (inches)	0.75
Cover Size (inches)	26	Grade	Above Grade
Clear Opening Diameter	24	Surface Materials	Paved
Drainage Area (sqft)	4	Cracked Pavement Surrounding Frame	No
Cover Comments			

Internal Manhole Observations						
Item	Material	Condition	Infiltration?	Infiltration (GPM)	Defects	Comments
Frame	Cast Iron	Sound	No			
Chimney	Parged	Sound	No			
Cone	Parged	Sound	No			
Walls	Parged	Sound	No			
Steps	Present? Yes	# of Steps: 4		Material: Metal		
Bench	Parged	Sound	No			
	Bench Debris Depth (Inches):			Bench Debris:		
Channel	Lined	Sound	No			
	Channel Debris Depth (Inches):			Channel Debris:		
Surcharge from Invert Evident? No				Currently:	Marks To:	
Additional Comments:						

Line Conditions												
In/Out	Compass Direction	Pipe Size	Pipe Material	Rim to Invert Depth	Condition	Flow Depth	Defects	Infiltration	Infiltration (GPM)	Debris	Debris Depth	Debris Material
Out	15/053	8"	Lined	7'7"	Sound	0.25"	No	No	N/A	No	N/A	N/A
In	15/051	8"	Lined	7'6"	Sound	0.25"	No	No	N/A	No	N/A	N/A
Additional Comments:												

Westwood, MA Manhole Inspections Manhole ID: 15/054 Westwood, MA

General Information			
Inspectors	BK, TA	Location (Street)	117 Colburn St.
Date/Time	July 26, 2023 12:25	Meter Area	



Manhole Information			
Cover Material	Cast Iron	Holes In Cover	Yes
Cover Condition	Sound	Number of Holes	2
Cover Defects		Hole Size (inches)	0.75
Cover Size (inches)	26	Grade	At Grade
Clear Opening Diameter	24	Surface Materials	Paved
Drainage Area (sqft)	4	Cracked Pavement Surrounding Frame	No
Cover Comments			



Associates, Inc.

Environmental Monitoring
Pipeline Services
Operations & Maintenance

Internal Manhole Observations						
Item	Material	Condition	Infiltration?	Infiltration (GPM)	Defects	Comments
Frame	Cast Iron	Sound	No			
Chimney	Parged	Sound	No			
Cone	Parged	Sound	No			
Walls	Parged	Sound	No			
Steps	Present? Yes	# of Steps: 4		Material: Metal		
Bench	Parged	Sound	No			
	Bench Debris Depth (Inches):			Bench Debris:		
Channel	Parged	Sound	No			
	Channel Debris Depth (Inches):			Channel Debris:		
Surcharge from Invert Evident? No				Currently:	Marks To:	
Additional Comments:						

Line Conditions												
In/Out	Compass Direction	Pipe Size	Pipe Material	Rim to Invert Depth	Condition	Flow Depth	Defects	Infiltration	Infiltration (GPM)	Debris	Debris Depth	Debris Material
Out	15/055	8"	Lined	8'8"	Sound	1"	No	No	N/A	No	N/A	N/A
In	15/053	8"	Lined	7'7"	Sound	1"	No	No	N/A	No	N/A	N/A
Additional Comments:												

Westwood, MA Manhole Inspections
Manhole ID: 15/055
Westwood, MA

General Information			
Inspectors	BK, TA	Location (Street)	143 Colburn St.
Date/Time	July 26, 2023 12:16	Meter Area	



Manhole Information			
Cover Material	Cast Iron	Holes In Cover	Yes
Cover Condition	Sound	Number of Holes	2
Cover Defects		Hole Size (inches)	0.75
Cover Size (inches)	26	Grade	Above Grade
Clear Opening Diameter	24	Surface Materials	Paved
Drainage Area (sqft)	4	Cracked Pavement Surrounding Frame	No
Cover Comments			

Internal Manhole Observations						
Item	Material	Condition	Infiltration?	Infiltration (GPM)	Defects	Comments
Frame	Cast Iron	Sound	No			
Chimney	Parged	Sound	No			
Cone	Parged	Sound	No			
Walls	Parged	Sound	No			
Steps	Present? Yes	# of Steps: 5		Material: Metal		
Bench	Parged	Sound	No			
	Bench Debris Depth (Inches):			Bench Debris:		
Channel	Lined	Sound	No			
	Channel Debris Depth (Inches):			Channel Debris:		
Surcharge from Invert Evident? No				Currently:		Marks To:
Additional Comments:						

Line Conditions												
In/Out	Compass Direction	Pipe Size	Pipe Material	Rim to Invert Depth	Condition	Flow Depth	Defects	Infiltration	Infiltration (GPM)	Debris	Debris Depth	Debris Material
Out	15/043	8"	Lined	8'8"	Sound	1"	No	No	N/A	No	N/A	N/A
In	15/054	8"	Lined	8'7"	Sound	1"	No	No	N/A	No	N/A	N/A
Additional Comments:												

Westwood, MA Manhole Inspections Manhole ID: 15/043 Westwood, MA

General Information			
Inspectors	BK, TA	Location (Street)	163 Colburn St.
Date/Time	July 26, 2023 12:09	Meter Area	



Manhole Information			
Cover Material	Cast Iron	Holes In Cover	Yes
Cover Condition	Sound	Number of Holes	2
Cover Defects		Hole Size (inches)	0.75
Cover Size (inches)	26	Grade	At Grade
Clear Opening Diameter	24	Surface Materials	Paved
Drainage Area (sqft)	4	Cracked Pavement Surrounding Frame	Yes
Cover Comments			

Internal Manhole Observations						
Item	Material	Condition	Infiltration?	Infiltration (GPM)	Defects	Comments
Frame	Cast Iron	Sound	No			
Chimney	Parged	Sound	No			
Cone	Parged	Sound	No			
Walls	Parged	Sound	No			
Steps	Present? Yes	# of Steps: 5		Material: Metal		
Bench	Parged	Sound	No			
	Bench Debris Depth (Inches):			Bench Debris:		
Channel	Brick	Sound	No			
	Channel Debris Depth (Inches):			Channel Debris:		
Surcharge from Invert Evident? No				Currently:	Marks To:	
Additional Comments:						

Line Conditions												
In/Out	Compass Direction	Pipe Size	Pipe Material	Rim to Invert Depth	Condition	Flow Depth	Defects	Infiltration	Infiltration (GPM)	Debris	Debris Depth	Debris Material
Out	15/058	8"	Lined	8'10"	Sound	3.5"	No	No	N/A	No	N/A	N/A
In	15/055	8"	Lined	8'8"	Sound	1"	No	No	N/A	No	N/A	N/A
In	15/042	8"	ACP	8'8"	Sound	1.5"	No	No	N/A	No	N/A	N/A
Additional Comments:												

Westwood, MA Manhole Inspections Manhole ID: 15/042 Westwood, MA

General Information			
Inspectors	BK, TA	Location (Street)	175 Colburn St.
Date/Time	July 26, 2023 11:59	Meter Area	



Manhole Information			
Cover Material	Cast Iron	Holes In Cover	Yes
Cover Condition	Sound	Number of Holes	2
Cover Defects		Hole Size (inches)	0.75
Cover Size (inches)	26	Grade	Below Grade
Clear Opening Diameter	24	Surface Materials	Paved
Drainage Area (sqft)	8	Cracked Pavement Surrounding Frame	No
Cover Comments			

Internal Manhole Observations						
Item	Material	Condition	Infiltration?	Infiltration (GPM)	Defects	Comments
Frame	Cast Iron	Sound	No			
Chimney	Brick, Parged	Sound	No			
Cone	Precast, Parged	Sound	No			
Walls	Precast, Parged	Sound	No			
Steps	Present? Yes	# of Steps: 5		Material: Metal		
Bench	Parged	Sound	No			
	Bench Debris Depth (Inches):			Bench Debris:		
Channel	Brick	Sound	No			
	Channel Debris Depth (Inches):			Channel Debris:		
Surcharge from Invert Evident? No				Currently:		Marks To:
Additional Comments:						

Line Conditions												
In/Out	Compass Direction	Pipe Size	Pipe Material	Rim to Invert Depth	Condition	Flow Depth	Defects	Infiltration	Infiltration (GPM)	Debris	Debris Depth	Debris Material
Out	15/043	8"	ACP	8'7"	Sound	3"	No	No	N/A	No	N/A	N/A
In	15/041	8"	ACP	8'6"	Sound	3"	No	No	N/A	No	N/A	N/A
Additional Comments:												

Westwood, MA Manhole Inspections
Manhole ID: 15/040
Westwood, MA

General Information			
Inspectors	BK, TA	Location (Street)	142 Ellis St.
Date/Time	July 26, 2023 10:47	Meter Area	



Manhole Information			
Cover Material	Cast Iron	Holes In Cover	Yes
Cover Condition	Sound	Number of Holes	2
Cover Defects		Hole Size (inches)	0.75
Cover Size (inches)	26	Grade	At Grade
Clear Opening Diameter	24	Surface Materials	Paved
Drainage Area (sqft)	6	Cracked Pavement Surrounding Frame	No
Cover Comments			



Associates, Inc.

Environmental Monitoring
Pipeline Services
Operations & Maintenance

Internal Manhole Observations						
Item	Material	Condition	Infiltration?	Infiltration (GPM)	Defects	Comments
Frame	Cast Iron	Sound	No			
Chimney	Parged	Sound	No			
Cone	Parged	Sound	No			
Walls	Parged	Sound	No			
Steps	Present? Yes	# of Steps: 11		Material: Metal		
Bench	Parged	Sound	No			
	Bench Debris Depth (Inches):			Bench Debris:		
Channel	Parged	Sound	No			
	Channel Debris Depth (Inches):			Channel Debris:		
Surcharge from Invert Evident? No				Currently:		Marks To:
Additional Comments:						

Line Conditions												
In/Out	Compass Direction	Pipe Size	Pipe Material	Rim to Invert Depth	Condition	Flow Depth	Defects	Infiltration	Infiltration (GPM)	Debris	Debris Depth	Debris Material
Out	15/041	8"	ACP	13'3"	Sound	3"	No	No	N/A	No	N/A	N/A
In	15/036	8"	ACP	13'1"	Sound	2"	No	No	N/A	No	N/A	N/A
In	15/039	8"	ACP	13'0"	Sound	0.5"	No	No	N/A	No	N/A	N/A
Additional Comments:												

Westwood, MA Manhole Inspections
Manhole ID: 15/039
Westwood, MA

General Information			
Inspectors	BK, TA	Location (Street)	136 Ellis St.
Date/Time	July 26, 2023 10:38	Meter Area	



Manhole Information			
Cover Material	Cast Iron	Holes In Cover	Yes
Cover Condition	Sound	Number of Holes	2
Cover Defects		Hole Size (inches)	0.75
Cover Size (inches)	26	Grade	At Grade
Clear Opening Diameter	24	Surface Materials	Paved
Drainage Area (sqft)	4	Cracked Pavement Surrounding Frame	No
Cover Comments			

Internal Manhole Observations						
Item	Material	Condition	Infiltration?	Infiltration (GPM)	Defects	Comments
Frame	Cast Iron	Sound	No			
Chimney	Brick, Precast, Parged	Sound	No			
Cone	Precast	Sound	No			
Walls	Precast	Defective	No		MMM	
Steps	Present? Yes	# of Steps: 4		Material: Metal		
Bench	Brick	Sound	No			
	Bench Debris Depth (Inches): 2.5			Bench Debris: Sediment		
Channel	Brick	Sound	No			
	Channel Debris Depth (Inches): 0.5			Channel Debris: Sanitary		
Surcharge from Invert Evident? No				Currently:		Marks To:
Additional Comments:						

Line Conditions												
In/Out	Compass Direction	Pipe Size	Pipe Material	Rim to Invert Depth	Condition	Flow Depth	Defects	Infiltration	Infiltration (GPM)	Debris	Debris Depth	Debris Material
Out	15/040	8"	ACP	9'6"	Sound	0.25"	No	No	N/A	No	N/A	N/A
In	15/038	8"	ACP	9'5"	Sound	0.25"	No	No	N/A	No	N/A	N/A
Additional Comments:												

Westwood, MA Manhole Inspections
Manhole ID: 15/015
Westwood, MA

General Information			
Inspectors	BK, TA	Location (Street)	25 Ellis St.
Date/Time	July 26, 2023 10:10	Meter Area	



Manhole Information			
Cover Material	Cast Iron	Holes In Cover	Yes
Cover Condition	Sound	Number of Holes	2
Cover Defects		Hole Size (inches)	0.75
Cover Size (inches)	26	Grade	Below Grade
Clear Opening Diameter	24	Surface Materials	Paved
Drainage Area (sqft)	4	Cracked Pavement Surrounding Frame	Yes
Cover Comments			



Internal Manhole Observations						
Item	Material	Condition	Infiltration?	Infiltration (GPM)	Defects	Comments
Frame	Cast Iron	Sound	No			
Chimney	Parged	Sound	No			
Cone	Parged	Sound	No			
Walls	Parged	Sound	No			
Steps	Present? Yes	# of Steps: 4		Material: Metal		
Bench	Parged	Sound	No			
	Bench Debris Depth (Inches): 1			Bench Debris: Sanitary		
Channel	Brick	Sound	No			
	Channel Debris Depth (Inches):			Channel Debris:		
Surcharge from Invert Evident? No				Currently:		Marks To:
Additional Comments:						

Line Conditions												
In/Out	Compass Direction	Pipe Size	Pipe Material	Rim to Invert Depth	Condition	Flow Depth	Defects	Infiltration	Infiltration (GPM)	Debris	Debris Depth	Debris Material
Out	15/016	8"	ACP	6'10"	Sound	0.5"	No	No	N/A	No	N/A	N/A
In	15/014	8"	ACP	6'9"	Sound	0.5"	No	No	N/A	No	N/A	N/A
Additional Comments:												

Westwood, MA Manhole Inspections
Manhole ID: 15/016
Westwood, MA

General Information			
Inspectors	BK, TA	Location (Street)	145 Nahatan St. (On Ellis St.)
Date/Time	July 26, 2023 09:39	Meter Area	



Manhole Information			
Cover Material	Cast Iron	Holes In Cover	Yes
Cover Condition	Sound	Number of Holes	2
Cover Defects		Hole Size (inches)	0.75
Cover Size (inches)	26	Grade	Below Grade
Clear Opening Diameter	24	Surface Materials	Paved
Drainage Area (sqft)	10	Cracked Pavement Surrounding Frame	Yes
Cover Comments			



Internal Manhole Observations						
Item	Material	Condition	Infiltration?	Infiltration (GPM)	Defects	Comments
Frame	Cast Iron	Sound	No			
Chimney	Brick	Defective	No		MB, MMS, HSV	
Cone	Parged	Sound	No			
Walls	Parged	Sound	No			
Steps	Present? Yes	# of Steps: 5		Material: Metal		
Bench	Parged	Sound	No			
	Bench Debris Depth (Inches): 2			Bench Debris: Sediment		
Channel	Brick	Sound	No			
	Channel Debris Depth (Inches):			Channel Debris:		
Surcharge from Invert Evident? No				Currently:		Marks To:
Additional Comments:						

Line Conditions												
In/Out	Compass Direction	Pipe Size	Pipe Material	Rim to Invert Depth	Condition	Flow Depth	Defects	Infiltration	Infiltration (GPM)	Debris	Debris Depth	Debris Material
Out	15/017	8"	ACP	8'1"	Sound	0.5"	No	No	N/A	No	N/A	N/A
In	15/015	8"	ACP	8'	Sound	0.5"	No	No	N/A	No	N/A	N/A
Additional Comments:												

Westwood, MA Manhole Inspections Manhole ID: 15/018 Westwood, MA

General Information			
Inspectors	BK, TA	Location (Street)	Ellis St. @ French St.
Date/Time	July 26, 2023 09:15	Meter Area	



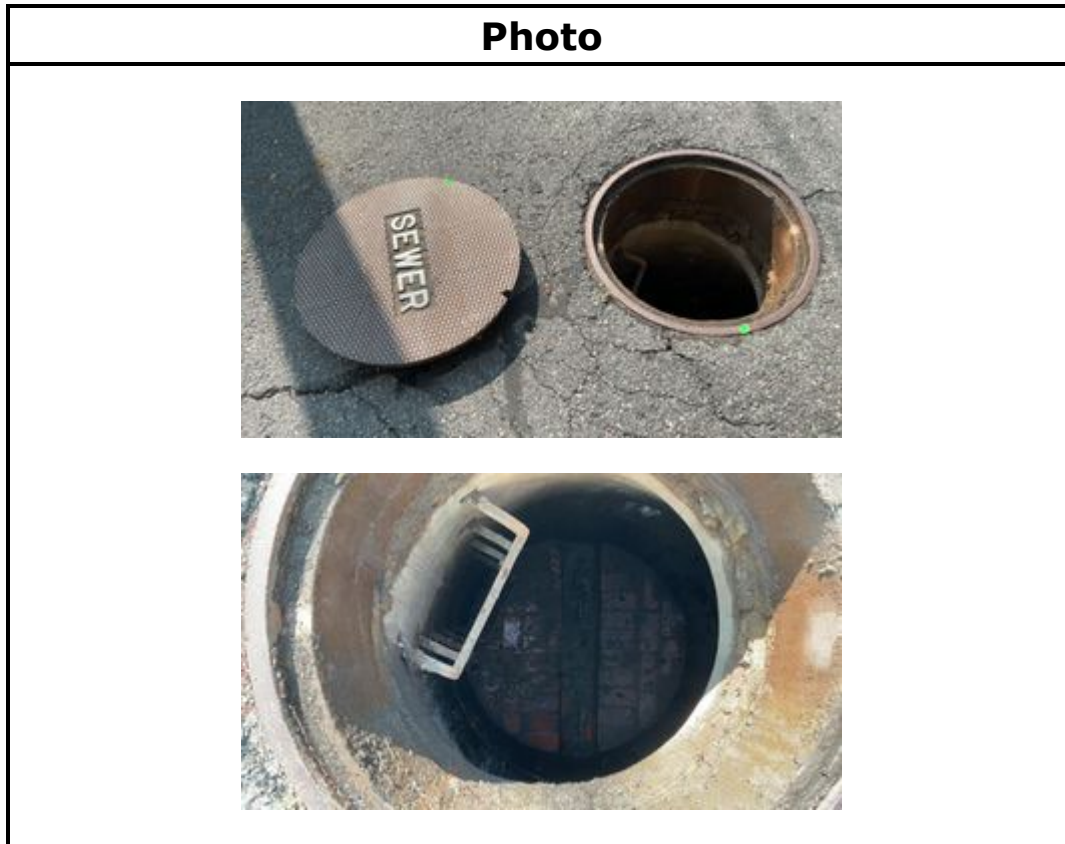
Manhole Information			
Cover Material	Cast Iron	Holes In Cover	Yes
Cover Condition	Sound	Number of Holes	2
Cover Defects		Hole Size (inches)	0.75
Cover Size (inches)	26	Grade	At Grade
Clear Opening Diameter	24	Surface Materials	Paved
Drainage Area (sqft)	4	Cracked Pavement Surrounding Frame	Yes
Cover Comments			

Internal Manhole Observations						
Item	Material	Condition	Infiltration?	Infiltration (GPM)	Defects	Comments
Frame	Cast Iron	Sound	No			
Chimney	Parged	Sound	No			
Cone	Parged	Sound	No			
Walls	Parged	Sound	No			
Steps	Present? Yes	# of Steps: 6		Material: Metal		
Bench	Parged	Sound	No			
	Bench Debris Depth (Inches):			Bench Debris:		
Channel	Parged	Sound	No			
	Channel Debris Depth (Inches):			Channel Debris:		
Surcharge from Invert Evident? No				Currently:	Marks To:	
Additional Comments:						

Line Conditions												
In/Out	Compass Direction	Pipe Size	Pipe Material	Rim to Invert Depth	Condition	Flow Depth	Defects	Infiltration	Infiltration (GPM)	Debris	Debris Depth	Debris Material
Out	15/025	8"	ACP	10'1"	Sound	1.5"	No	No	N/A	No	N/A	N/A
In	15/017	8"	ACP	9'10"	Sound	0.5"	No	No	N/A	No	N/A	N/A
In	15/005	8"	ACP	6'4"	Sound	1"	No	No	N/A	No	N/A	N/A
In	15/019	8"	ACP	9'11"	Sound	0.1"	No	No	N/A	No	N/A	N/A
Additional Comments: In (15/005) is an outside drop.												

Westwood, MA Manhole Inspections
Manhole ID: 15/019
Westwood, MA

General Information			
Inspectors	BK, TA	Location (Street)	103 Ellis St.
Date/Time	July 26, 2023 09:07	Meter Area	



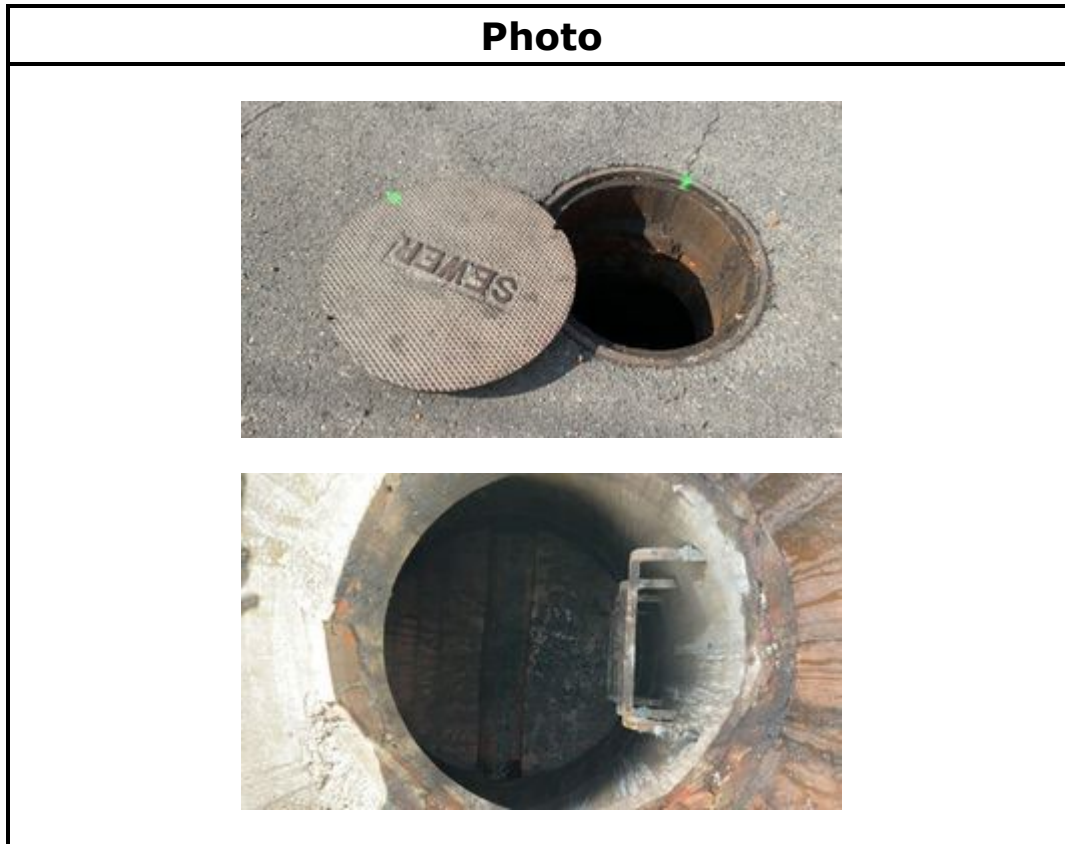
Manhole Information			
Cover Material	Cast Iron	Holes In Cover	Yes
Cover Condition	Sound	Number of Holes	2
Cover Defects		Hole Size (inches)	0.75
Cover Size (inches)	26	Grade	At Grade
Clear Opening Diameter	24	Surface Materials	Paved
Drainage Area (sqft)	4	Cracked Pavement Surrounding Frame	Yes
Cover Comments			

Internal Manhole Observations						
Item	Material	Condition	Infiltration?	Infiltration (GPM)	Defects	Comments
Frame	Cast Iron	Sound	No			
Chimney	Brick, Precast	Sound	No			
Cone	Precast	Sound	No			
Walls	Precast	Sound	No			
Steps	Present? Yes	# of Steps: 5		Material: Metal		
Bench	Brick	Sound	No			
	Bench Debris Depth (Inches):			Bench Debris:		
Channel	Brick	Sound	No			
	Channel Debris Depth (Inches): 0.75			Channel Debris: Sanitary, Sediment		
Surcharge from Invert Evident? No				Currently:		Marks To:
Additional Comments:						

Line Conditions												
In/Out	Compass Direction	Pipe Size	Pipe Material	Rim to Invert Depth	Condition	Flow Depth	Defects	Infiltration	Infiltration (GPM)	Debris	Debris Depth	Debris Material
Out	15/018	8"	ACP	7'9"	Sound	0"	No	No	N/A	Yes	0.25"	Sediment
Additional Comments:												

Westwood, MA Manhole Inspections
Manhole ID: 15/037
Westwood, MA

General Information			
Inspectors	BK, TA	Location (Street)	104 Ellis St.
Date/Time	July 26, 2023 08:54	Meter Area	



Manhole Information			
Cover Material	Cast Iron	Holes In Cover	Yes
Cover Condition	Sound	Number of Holes	2
Cover Defects		Hole Size (inches)	0.75
Cover Size (inches)	26	Grade	At Grade
Clear Opening Diameter	24	Surface Materials	Paved
Drainage Area (sqft)	4	Cracked Pavement Surrounding Frame	No
Cover Comments			



Associates, Inc.

Environmental Monitoring
Pipeline Services
Operations & Maintenance

Internal Manhole Observations						
Item	Material	Condition	Infiltration?	Infiltration (GPM)	Defects	Comments
Frame	Cast Iron	Sound	No			
Chimney	Brick, Precast	Defective	No		MMS, HSV	
Cone	Precast	Sound	No			
Walls	Precast	Defective	No		Lift hole missing mortar	
Steps	Present? Yes	# of Steps: 4		Material: Metal		
Bench	Brick	Sound	No			
	Bench Debris Depth (Inches): 1			Bench Debris: Sediment		
Channel	Brick	Sound	No			
	Channel Debris Depth (Inches): 1			Channel Debris: Sediment		
Surcharge from Invert Evident? No				Currently:		Marks To:
Additional Comments:						

Line Conditions												
In/Out	Compass Direction	Pipe Size	Pipe Material	Rim to Invert Depth	Condition	Flow Depth	Defects	Infiltration	Infiltration (GPM)	Debris	Debris Depth	Debris Material
Out	15/038	8"	ACP	7'3"	Sound	0"	No	No	N/A	No	N/A	N/A
Additional Comments:												

Westwood, MA Manhole Inspections
Manhole ID: 15/026
Westwood, MA

General Information			
Inspectors	BK, TA	Location (Street)	138 Church St.
Date/Time	July 26, 2023 08:29	Meter Area	



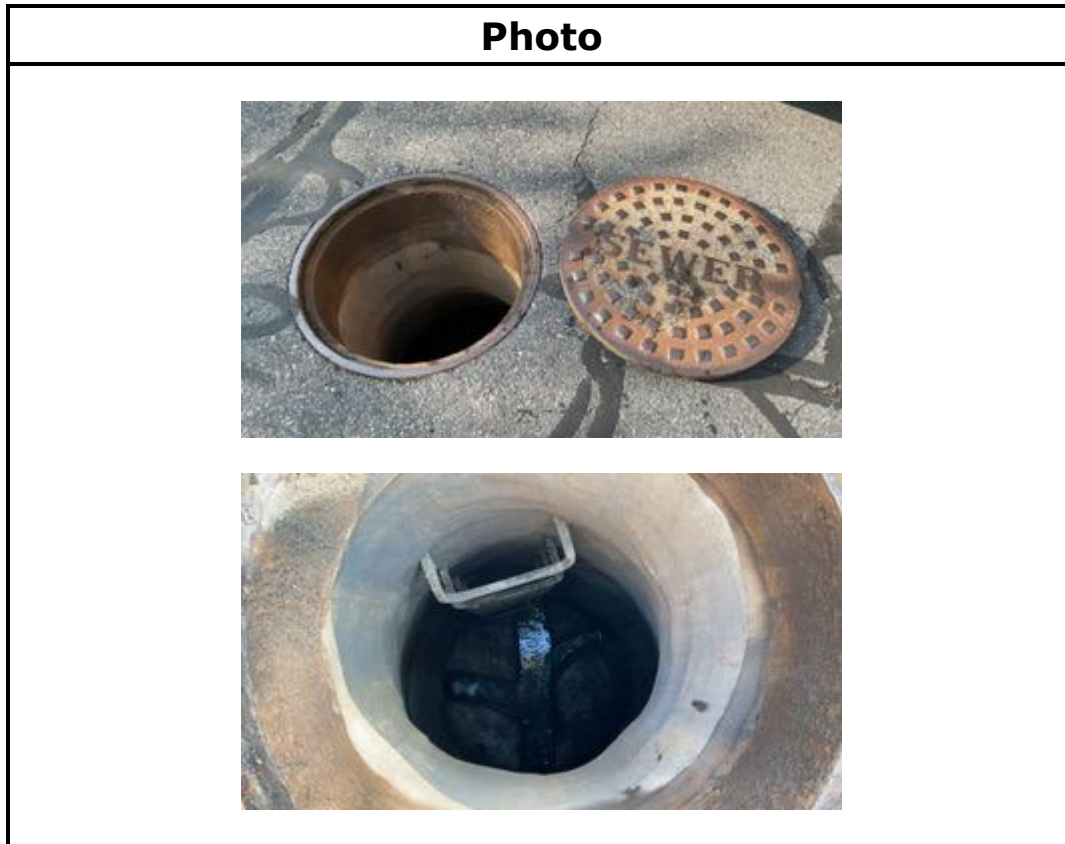
Manhole Information			
Cover Material	Cast Iron	Holes In Cover	Yes
Cover Condition	Sound	Number of Holes	2
Cover Defects		Hole Size (inches)	0.5
Cover Size (inches)	26	Grade	At Grade
Clear Opening Diameter	24	Surface Materials	Paved
Drainage Area (sqft)	4	Cracked Pavement Surrounding Frame	No
Cover Comments			

Internal Manhole Observations						
Item	Material	Condition	Infiltration?	Infiltration (GPM)	Defects	Comments
Frame	Cast Iron	Sound	No			
Chimney	Brick, Precast	Sound	No			
Cone	Precast	Sound	No			
Walls	Precast	Sound	No			
Steps	Present? Yes	# of Steps: 4		Material: Metal		
Bench	Brick	Sound	No			
	Bench Debris Depth (Inches): 1			Bench Debris: Sediment		
Channel	Brick	Sound	No			
	Channel Debris Depth (Inches):			Channel Debris:		
Surcharge from Invert Evident? No				Currently:		Marks To:
Additional Comments:						

Line Conditions												
In/Out	Compass Direction	Pipe Size	Pipe Material	Rim to Invert Depth	Condition	Flow Depth	Defects	Infiltration	Infiltration (GPM)	Debris	Debris Depth	Debris Material
Out	15/024	8"	ACP	7'10"	Sound	0.5"	No	No	N/A	No	N/A	N/A
In	15/027	8"	ACP	7'9"	Sound	0.5"	No	No	N/A	No	N/A	N/A
Additional Comments:												

Westwood, MA Manhole Inspections
Manhole ID: 15/024
Westwood, MA

General Information			
Inspectors	BK, TA	Location (Street)	Church St. @ French St.
Date/Time	July 26, 2023 08:18	Meter Area	



Manhole Information			
Cover Material	Cast Iron	Holes In Cover	Yes
Cover Condition	Sound	Number of Holes	2
Cover Defects		Hole Size (inches)	0.5
Cover Size (inches)	26	Grade	At Grade
Clear Opening Diameter	24	Surface Materials	Paved
Drainage Area (sqft)	4	Cracked Pavement Surrounding Frame	No
Cover Comments			



Internal Manhole Observations						
Item	Material	Condition	Infiltration?	Infiltration (GPM)	Defects	Comments
Frame	Cast Iron	Sound	No			
Chimney	Parged	Sound	No			
Cone	Parged	Sound	No			
Walls	Parged	Sound	No			
Steps	Present? Yes	# of Steps: 6		Material: Metal		
Bench	Parged	Sound	No			
	Bench Debris Depth (Inches):			Bench Debris:		
Channel	Parged	Sound	No			
	Channel Debris Depth (Inches):			Channel Debris:		
Surcharge from Invert Evident? No				Currently:		Marks To:
Additional Comments:						

Line Conditions												
In/Out	Compass Direction	Pipe Size	Pipe Material	Rim to Invert Depth	Condition	Flow Depth	Defects	Infiltration	Infiltration (GPM)	Debris	Debris Depth	Debris Material
Out	15/033	8"	ACP	10'7"	Sound	2"	No	No	N/A	No	N/A	N/A
In	15/023	8"	ACP	10'6"	Sound	1"	No	No	N/A	No	N/A	N/A
In	15/025	8"	ACP	10'5"	Sound	1"	No	No	N/A	No	N/A	N/A
In	15/026	8"	ACP	10'6"	Sound	0.25"	No	No	N/A	No	N/A	N/A
Additional Comments:												

Westwood, MA Manhole Inspections
Manhole ID: 15/021
Westwood, MA

General Information			
Inspectors	BK, TA	Location (Street)	78 Church St.
Date/Time	July 26, 2023 07:22	Meter Area	



Manhole Information			
Cover Material	Cast Iron	Holes In Cover	Yes
Cover Condition	Sound	Number of Holes	2
Cover Defects		Hole Size (inches)	0.75
Cover Size (inches)	26	Grade	At Grade
Clear Opening Diameter	24	Surface Materials	Paved
Drainage Area (sqft)	6	Cracked Pavement Surrounding Frame	Yes
Cover Comments			

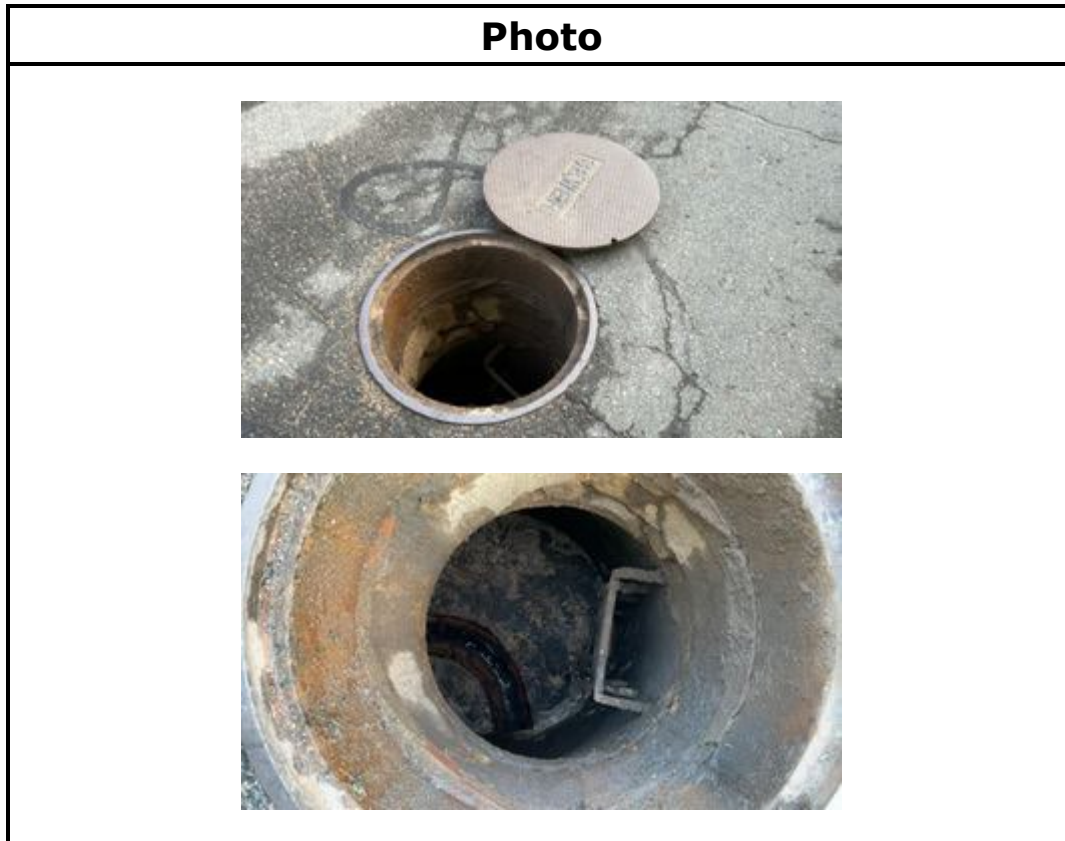


Internal Manhole Observations						
Item	Material	Condition	Infiltration?	Infiltration (GPM)	Defects	Comments
Frame	Cast Iron	Defective	No		Offset 4"	
Chimney	Brick, Precast	Sound	No			
Cone	Brick	Sound	No			
Walls	Brick	Sound	No			
Steps	Present? Yes	# of Steps: 4		Material: Metal		
Bench	Brick, Parged	Sound	No			
	Bench Debris Depth (Inches):			Bench Debris:		
Channel	Brick	Sound	No			
	Channel Debris Depth (Inches): 0.5			Channel Debris: Sanitary		
Surcharge from Invert Evident? No				Currently:		Marks To:
Additional Comments:						

Line Conditions												
In/Out	Compass Direction	Pipe Size	Pipe Material	Rim to Invert Depth	Condition	Flow Depth	Defects	Infiltration	Infiltration (GPM)	Debris	Debris Depth	Debris Material
Out	15/022	8"	ACP	7'8"	Sound	0.25"	No	No	N/A	No	N/A	N/A
In	15/020	8"	ACP	7'7"	Sound	0.25"	No	No	N/A	No	N/A	N/A
Additional Comments:												

Westwood, MA Manhole Inspections Manhole ID: 15/014 Westwood, MA

General Information			
Inspectors	BK, TA	Location (Street)	11 Baker St.
Date/Time	July 26, 2023 07:08	Meter Area	



Manhole Information			
Cover Material	Cast Iron	Holes In Cover	Yes
Cover Condition	Sound	Number of Holes	2
Cover Defects		Hole Size (inches)	0.75
Cover Size (inches)	26	Grade	At Grade
Clear Opening Diameter	24	Surface Materials	Paved
Drainage Area (sqft)	4	Cracked Pavement Surrounding Frame	Yes
Cover Comments			

Internal Manhole Observations						
Item	Material	Condition	Infiltration?	Infiltration (GPM)	Defects	Comments
Frame	Cast Iron	Sound	No			
Chimney	Brick, Precast, Parged	Sound	No			
Cone	Precast	Sound	No			
Walls	Precast	Sound	No			
Steps	Present? Yes	# of Steps: 4		Material: Metal		
Bench	Brick, Parged	Sound	No			
	Bench Debris Depth (Inches):			Bench Debris:		
Channel	Brick	Sound	No			
	Channel Debris Depth (Inches):			Channel Debris:		
Surcharge from Invert Evident? No				Currently:	Marks To:	
Additional Comments:						

Line Conditions												
In/Out	Compass Direction	Pipe Size	Pipe Material	Rim to Invert Depth	Condition	Flow Depth	Defects	Infiltration	Infiltration (GPM)	Debris	Debris Depth	Debris Material
Out	15/015	8"	ACP	7'9"	Sound	0.25"	No	No	N/A	No	N/A	N/A
In	15/013	8"	ACP	7'8"	Sound	0.25"	No	No	N/A	No	N/A	N/A
Additional Comments:												

Westwood, MA Manhole Inspections Manhole ID: 15/013 Westwood, MA

General Information			
Inspectors	BK, TA	Location (Street)	29 Baker St.
Date/Time	July 26, 2023 07:02	Meter Area	



Manhole Information			
Cover Material	Cast Iron	Holes In Cover	Yes
Cover Condition	Sound	Number of Holes	2
Cover Defects		Hole Size (inches)	0.75
Cover Size (inches)	26	Grade	At Grade
Clear Opening Diameter	24	Surface Materials	Paved
Drainage Area (sqft)	4	Cracked Pavement Surrounding Frame	No
Cover Comments			



Internal Manhole Observations						
Item	Material	Condition	Infiltration?	Infiltration (GPM)	Defects	Comments
Frame	Cast Iron	Sound	No			
Chimney	Brick, Precast	Defective	No		MB, MMM	
Cone	Precast	Sound	No			
Walls	Precast	Sound	No			
Steps	Present? Yes	# of Steps: 4		Material: Metal		
Bench	Brick	Sound	No			Bricks
	Bench Debris Depth (Inches): 0.5			Bench Debris: Sediment, Other		
Channel	Brick	Sound	No			
	Channel Debris Depth (Inches):			Channel Debris:		
Surcharge from Invert Evident? No				Currently:		Marks To:
Additional Comments:						

Line Conditions												
In/Out	Compass Direction	Pipe Size	Pipe Material	Rim to Invert Depth	Condition	Flow Depth	Defects	Infiltration	Infiltration (GPM)	Debris	Debris Depth	Debris Material
Out	15/014	8"	ACP	7'6"	Sound	0.1"	No	No	N/A	No	N/A	N/A
In	Southwest	8"	ACP	7'5"	Sound	0.1"	No	No	N/A	No	N/A	N/A
Additional Comments:												