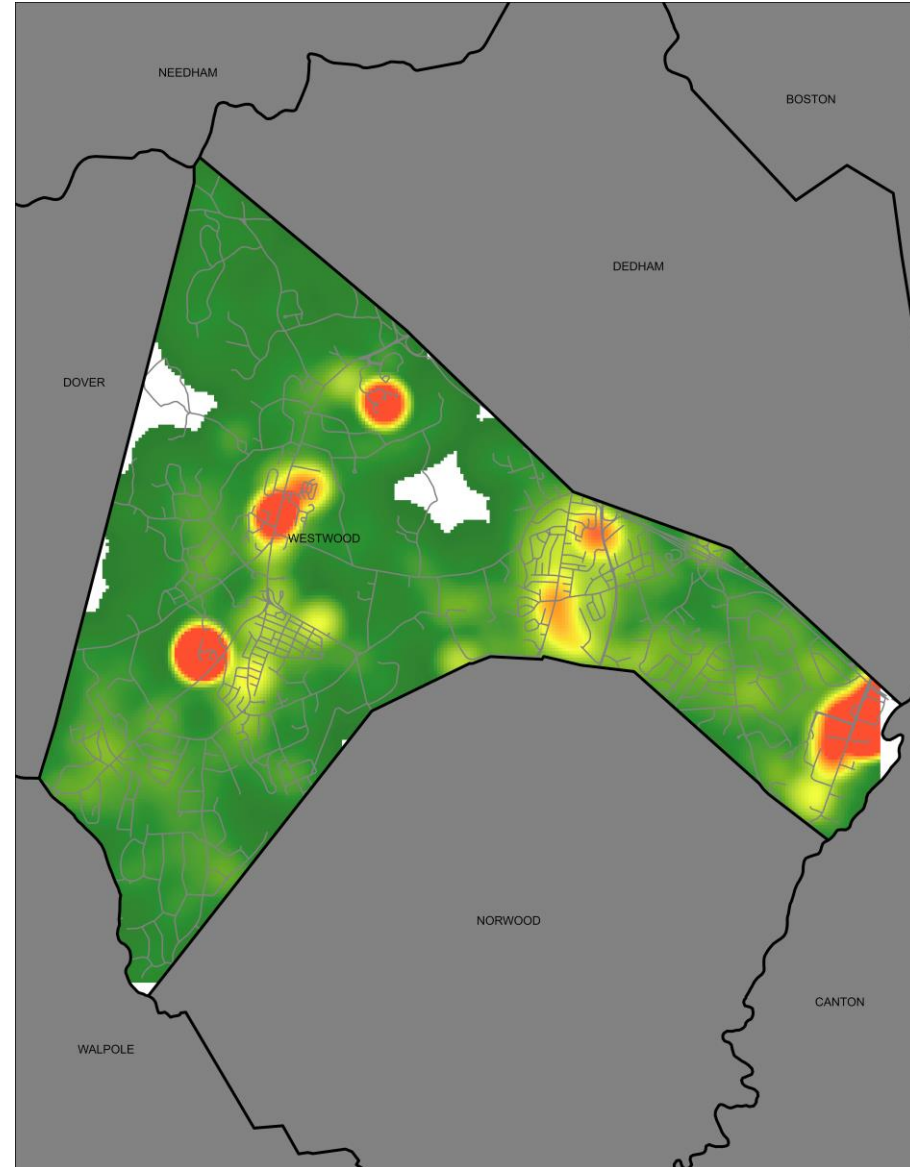




Westwood, MA
Fire
Department
Station Location and
Operations Study

July 12, 2023

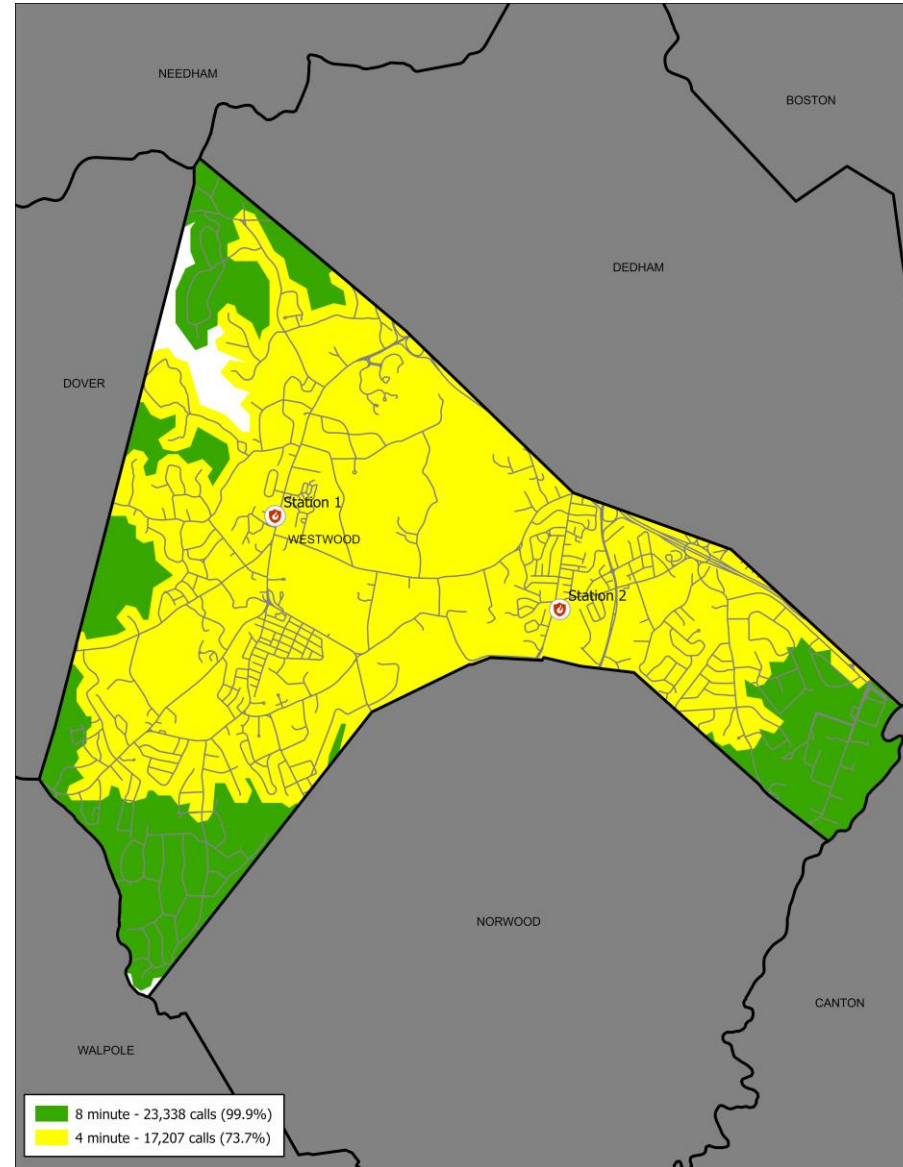
Heat Map of Calls for Service



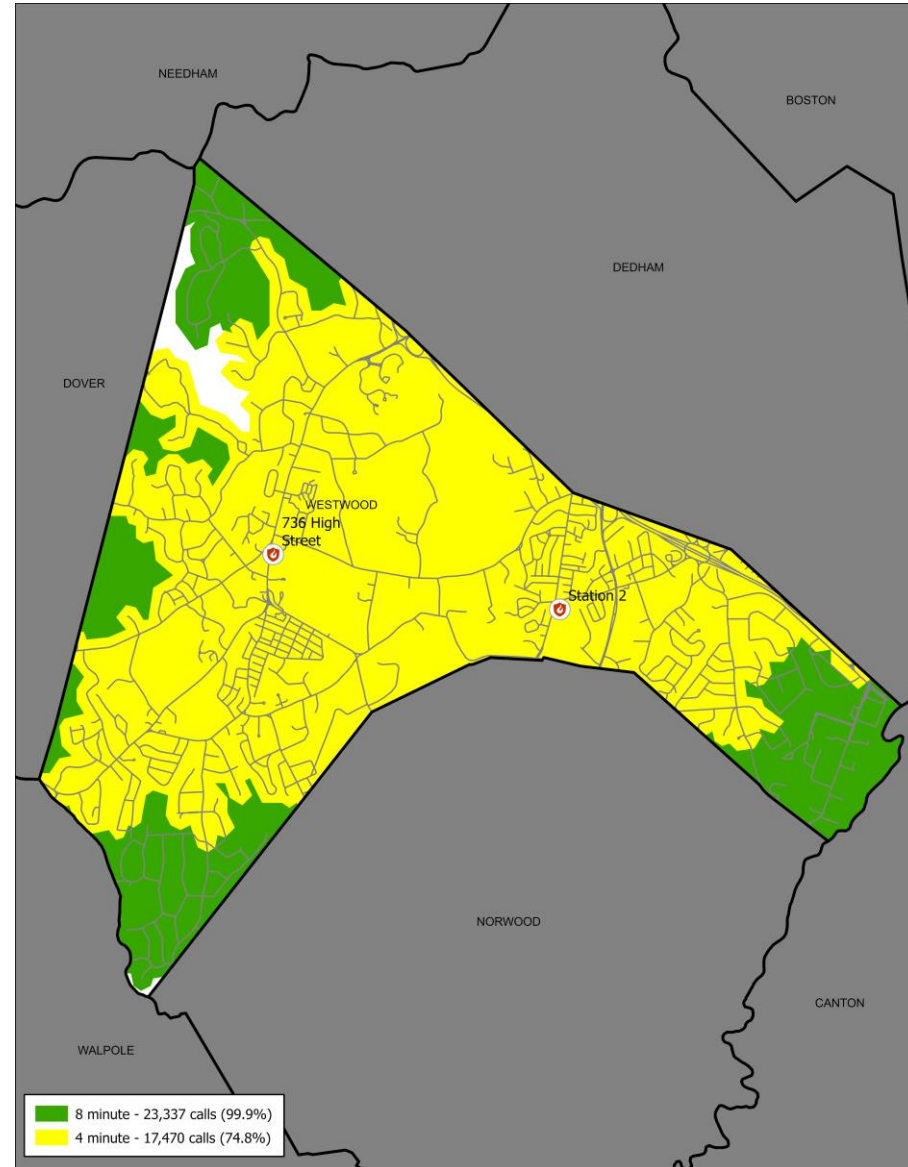
Data Summary from Analyses

Station 1 Site	Fractile 4 Minutes	Fractile 8 Minutes	Expected Response Time
Current (637 High St)	73.7%	99.9%	2.91 minutes base level
736 High St.	74.8%	99.9%	2.35 minutes (34) seconds
High St. @ Lowder Brook Rd.	73.7%	99.9%	3.59 minutes +41 seconds
Optimal – 832 High St.	74.3%	99.9%	2.64 minutes (16) seconds

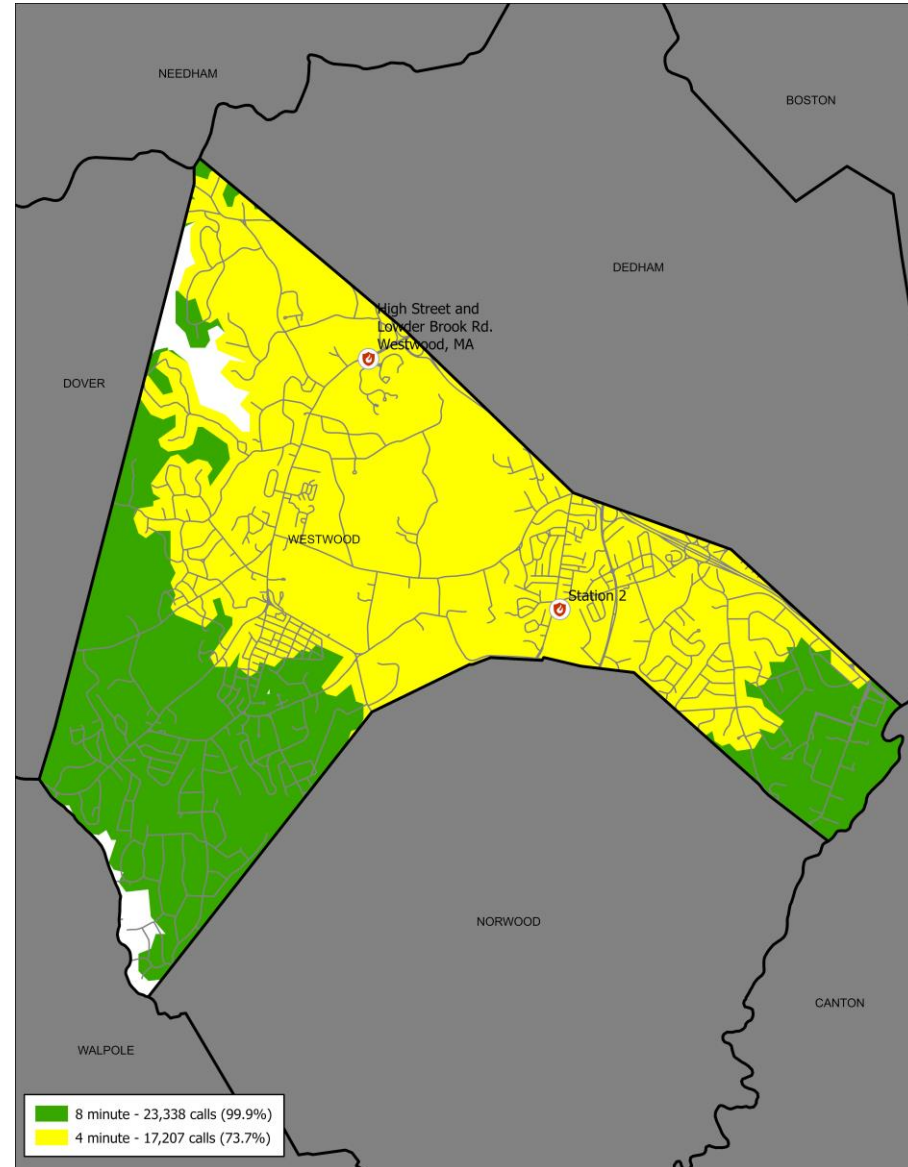
Current Locations - Station 1 @ 637 High St.



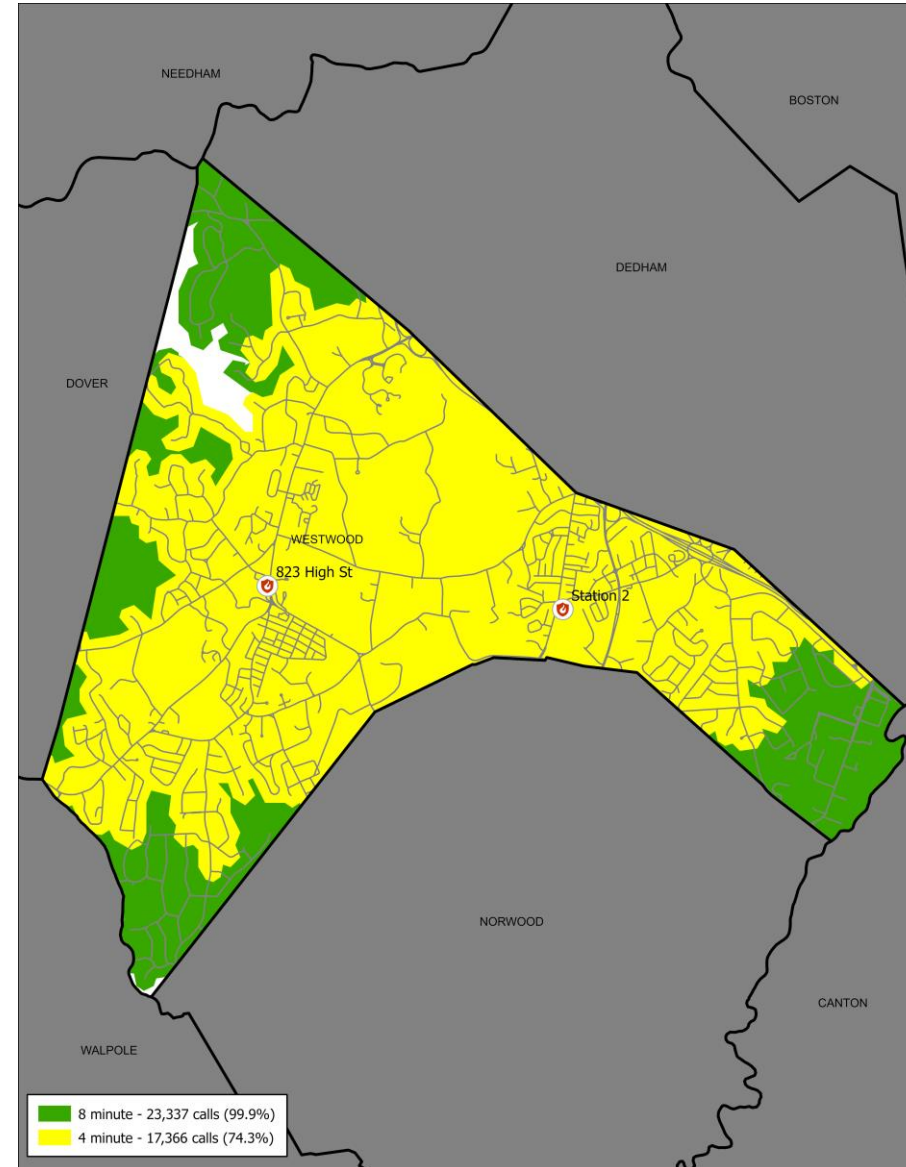
Station 1 @ 736 High St.



Station 1 @ High St. & Lowder Brook



Optimal Locations Station 1 @ 823 High St.



Runs by Unit

Unit	Runs	Runs / Day
A1	4,617	2.13
A2	4,487	2.07
A3	920	0.42
C3	4,520	2.09
E1	658	0.30
E2	5,384	2.49
E5	3,233	1.49
L1	442	0.20
L2	743	0.34
Total	25,004	11.55

Key Questions Posed by the Town

Opportunity to examine operations while new station is planned

What is the appropriate deployment model for the Town?

How should oversight of daily operations be organized and staffed?

Should the Fire Department continue providing EMS transport services?

Deployment Model

Distribute one staffed engine / quint per station

Distribute one staffed medic ambulance per station

All four front line pieces should be staffed

Shift command should be in a separate (5th) vehicle

Staffing should follow local standards for suburban communities: officer + 2FF on engine / quint & 2FF on ambulances

Workload justifies two engines and two ambulances. Use of a quint to provide aerial capability in suburban communities is a good practice

Oversight of Daily Operations

Standard within fire-rescue is for independent shift command and for each fire apparatus to have a supervisor

Current staffing should be modified to provide for four (4) additional Lieutenants to provide for unit oversight

Captain should remain as an independent shift commander providing management oversight, incident command, etc.

This is especially important as units are distributed across both stations.

Delivery of EMS Transport Services

Town of Westwood currently deploys advanced life support EMS using firefighter / paramedics **(5.1 ambulance runs / day average '17-'22)**

Current revenues are approximately \$1.6 million which helps defray operating and capitals costs of the service – revenue based on transporting patients

Fire-based EMS also allows the Department to utilize the staff from the ambulances on fires and other calls

If the Town eliminated the EMS service, the decision would need to be made about eliminating the positions or staffing another fire apparatus

The need for a dedicated aerial piece in Westwood (compared to the current engine / quint model) is not clear **(5.4 fire apparatus runs / day average '17-'22)**

Neighboring career departments are available to augment Westwood Fire in response to fire and major events (as Westwood does for them)

Recommendation: maintain current service delivery approach. If a decision is made the staff a third piece using existing staff, the cost impact is equivalent to the revenue that would be lost