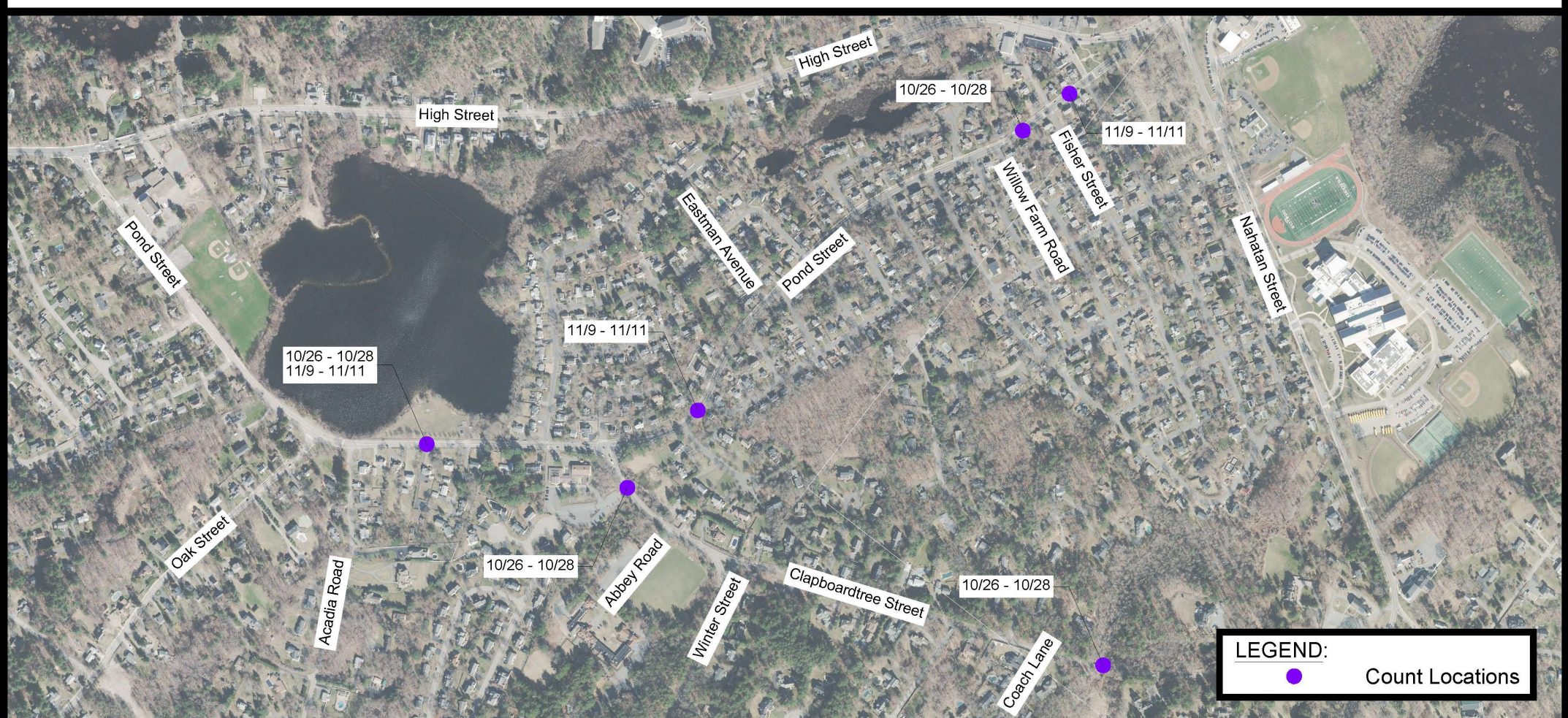


Pond Street and Clapboardtree Street Speed Analysis Town of Westwood, MA

Select Board
January 24, 2022

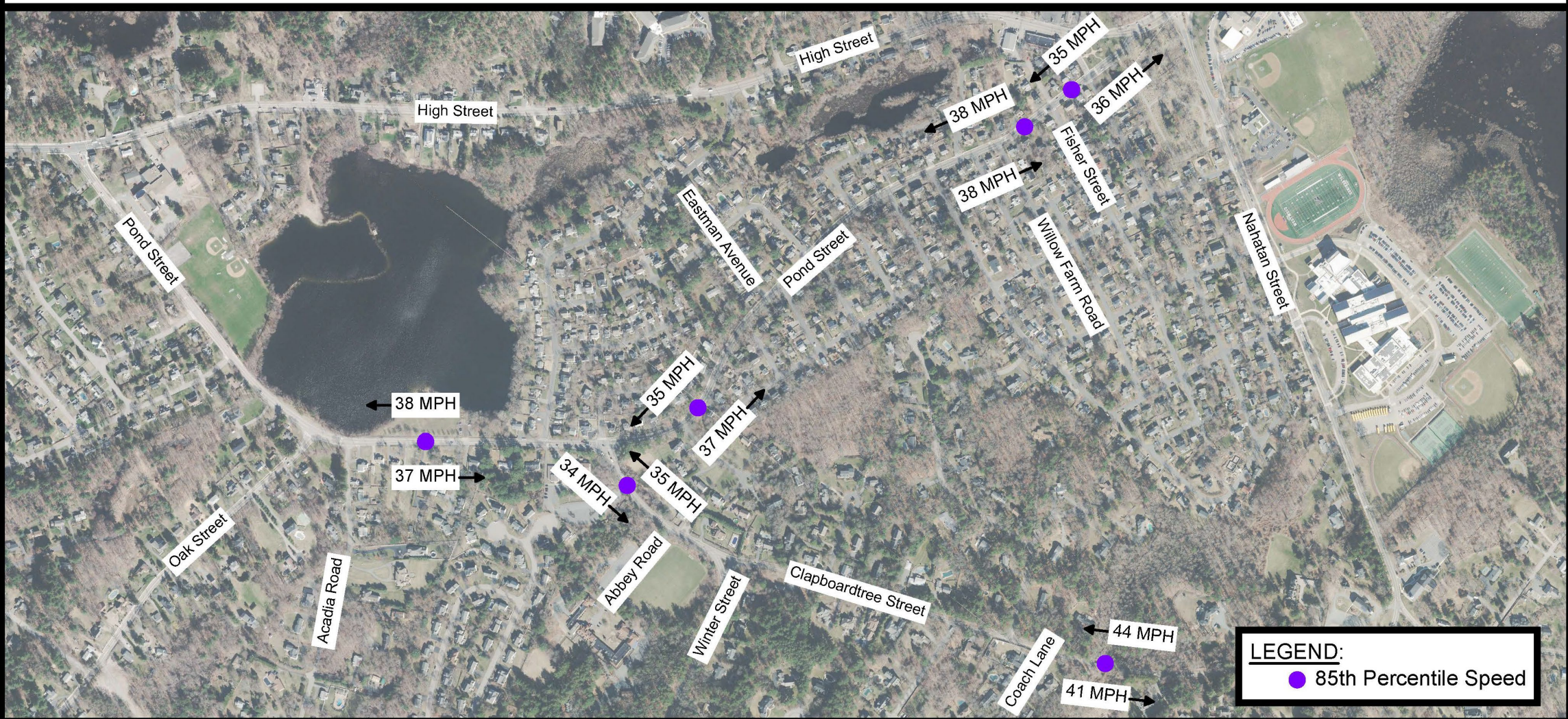


Data Collection

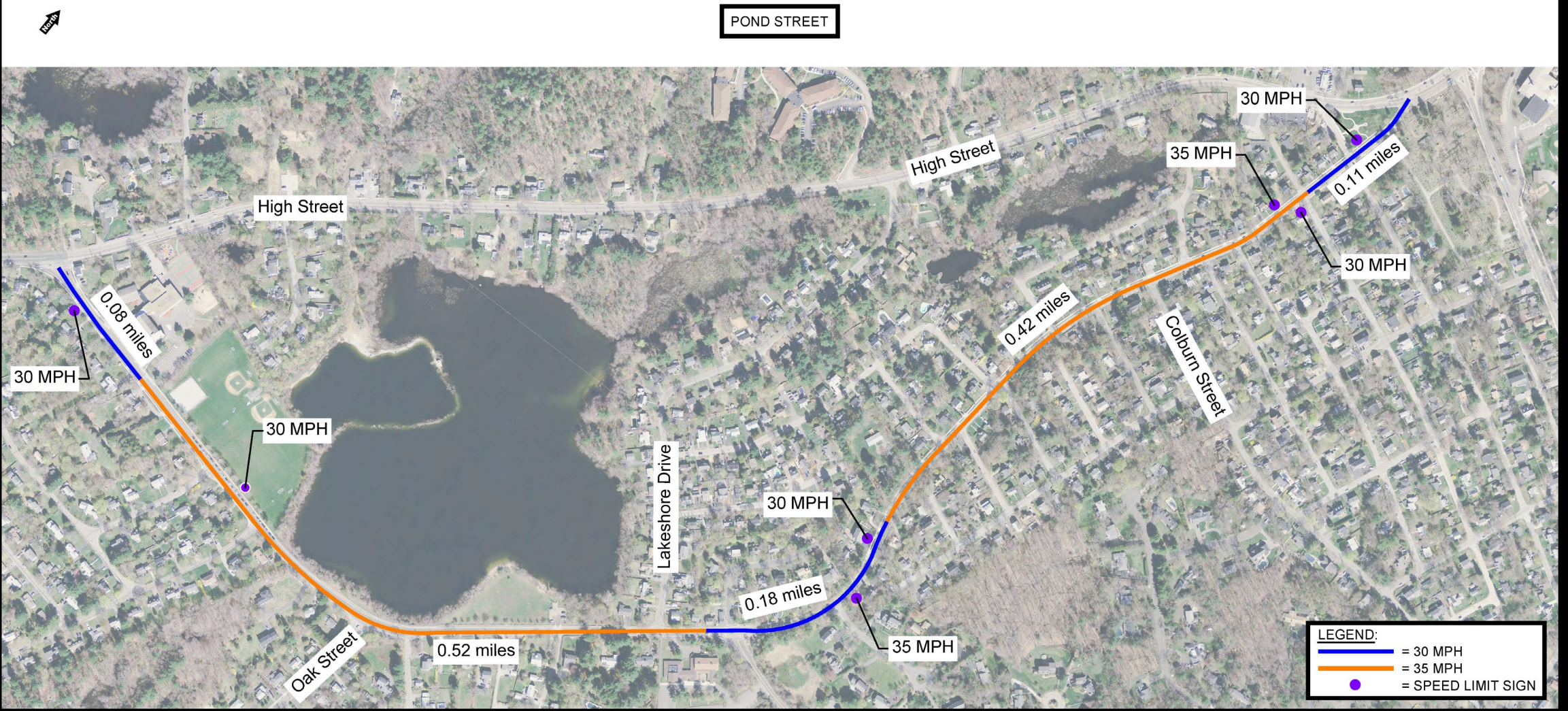


- **ATR Counts:**
 - 4 locations on Pond Street
 - 2 locations on Clapboardtree Street

Data Collection Results



Speed Regulations



Recommendations

- **Consider requesting MassDOT change the Speed Regulation on Pond Street**
 - Requires additional data collection
- **Post Pond Street with current Speed Regulations**
- **Post “Thickly Settled” warning signage where appropriate on Clapboardtree Street with 30 mph advisory speeds (completed)**
- **Change the existing Yield sign on the westbound channelized right turn from Clapboardtree Street to Pond Street to a Stop sign**