

GENERAL NOTES

- 1.) LOCUS PROPERTY IS COMPRISED OF:
ASSESSOR'S MAP 27 PLOT 40 = DEED BOOK 3659 / PAGE 875
OWNER OF RECORD: SOUTH SHORE HABITAT FOR HUMANITY, INC., 20
MATHWESON DRIVE, WEYMOUTH, MA 02189
- 2.) PLAN REFERENCES:
P-1) BOOK 176, PAGE 363
- 3.) BENCHMARK A: SIX IN ELEVATION = 278.40'
BENCHMARK B: NAG NAIL SET IN CONCRETE = 277.24'
(DATUM ASSUMED)
- 4.) ZONING INFORMATION ZONING DISTRICT: SINGLE RESIDENCE C-
MINIMUM / MAXIMUM ZONING REQUIREMENTS
MIN. LOT AREA = 40,000 S.F.
MIN. LOT FRONTAGE & WIDTH = 125'
MIN. FRONT YARD = 45'
MIN. SIDE YARD = 20'
MIN. REAR YARD = 50'
MAX. BUILDING COVERAGE = 25%
MIN. GREEN SPACE = 50%
*THE LOT IS AN EXISTING NON-CONFORMING PARCEL.
- 5.) THE PROPERTY LINE INFORMATION SHOWN IS BASED ON CURRENT
AVAILABLE RECORD INFORMATION CONSISTING OF PLANS AND DEEDS AND AN
ACTUAL ON THE GROUND FIELD SURVEY PERFORMED BY THIS FIRM ON:
10-04-2019
- 6.) COMMUNITY PANEL NUMBER: 5002500178E (DATE: 7-17-2012) THE FLOOD
INSURANCE RATE MAP DEPICTS THIS AREA AS ZONE X. AREA OUTSIDE THE XS
CHANCE ANNUAL FLOOD PLAN.
- 7.) UTILITY INFORMATION SHOWN HEREIN: THE CONTRACTOR SHALL CONTACT
GAS SAFE (AT 1-888-835-SAFE) AND UTILITY COMPANIES TO LOCATE ALL
EXISTING UTILITIES, AT LEAST 72 HOURS PRIOR TO THE START OF
CONSTRUCTION. LOCATION OF EXISTING UNDERGROUND INFRASTRUCTURE,
UTILITIES, CONDUITS AND LINES ARE SHOWN IN AN APPROXIMATE WAY ONLY,
MAY NOT BE LIMITED TO THOSE SHOWN HEREON, AND HAVE BEEN RESEARCHED
BASED ON THE AVAILABLE UTILITY RECORDS NOTED HEREON. THE CONTRACTOR
AGREES TO BE FULLY RESPONSIBLE FOR ANY AND ALL DAMAGES WHICH MIGHT
BE OCCASIONED BY THE CONTRACTOR'S FAILURE TO LOCATE SAID
INFRASTRUCTURE AND UTILITIES EXACTLY. IF FIELD CONDITIONS DIFFER FROM
PLAN INFORMATION, THE CONTRACTOR SHALL NOTIFY THE ENGINEER
IMMEDIATELY FOR POSSIBLE REVISION.

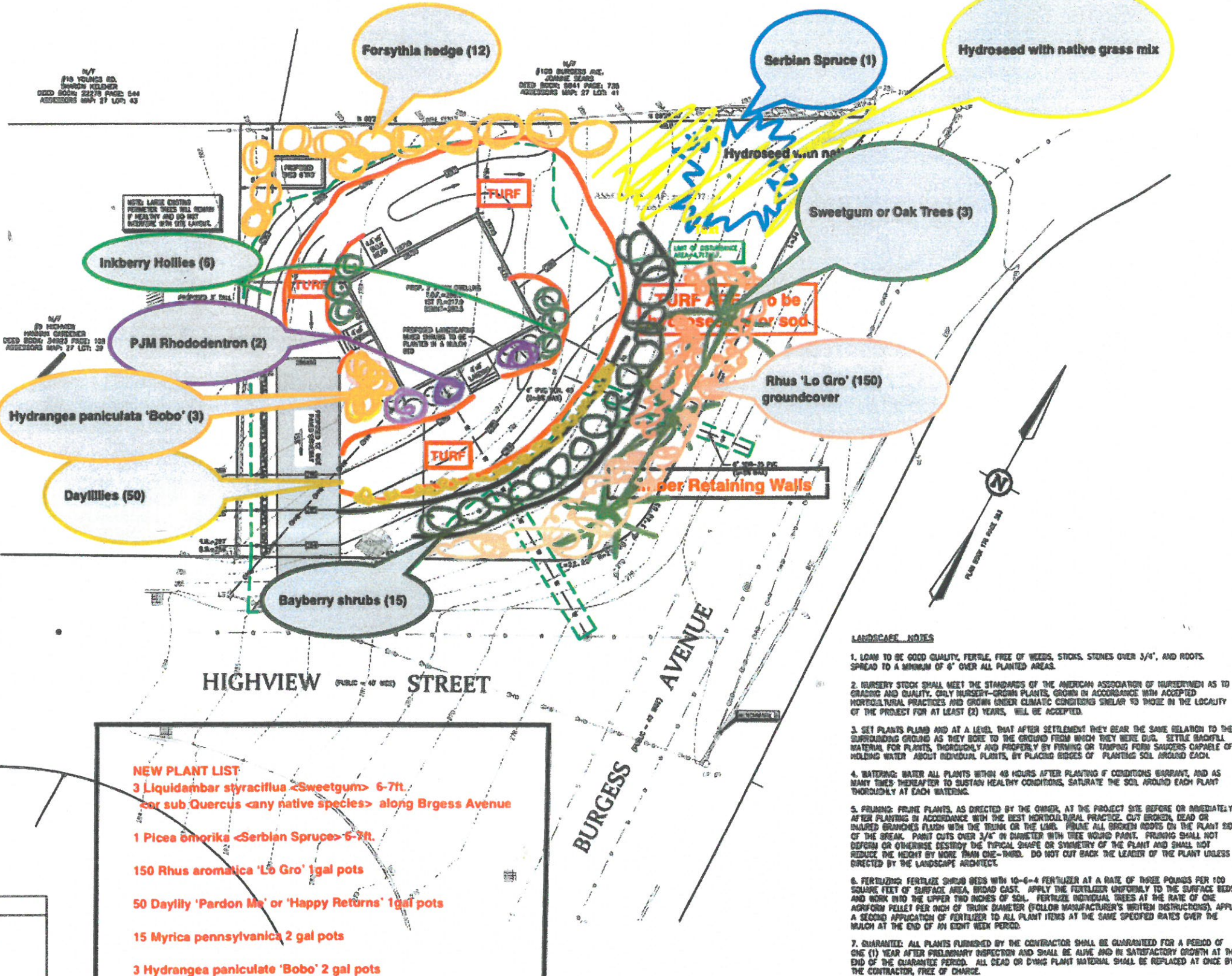
FOUNDATION PLANTING LEGEND

PLANT TYPE	DESCRIPTION	SIZE
TREES	ARBORVITAE "PYRAMIDAL" BIAXA OCCIDENTALIS	6" TALL
TREES	HAWKWOOD YEW TAXUS MEDIA	36 INCHES
TREES	VIBURNUM "AMERICAN CRANBERRY" VIBURNUM ALBUM	36 INCHES
CAS	VARIEGATED PLUM CORNUS ALBA "SANTINIANA"	36 INCHES
MS	VARIEGATED MAIDENHAIR MISCANTHUS ORIENTALIS	36 INCHES
JS	BLUE STAR JUNPER JUNIPERUS SQUAMATA	36 INCHES
BS	COMMON BORAGE DIANUS SEMPERPARENS	36 INCHES
HS	DAYLILY (YELLOW) HEMEROCALLIS "STELLA"	1 GAL.
AS	STONE CROP AURUM SEDUM	1 GAL.

IGNORE THIS PLANTING PLAN

LEGEND

PROPOSED	EXISTING	PROPOSED	EXISTING
(Symbol)	(Symbol)	(Symbol)	(Symbol)
(Symbol)	(Symbol)	(Symbol)	(Symbol)
(Symbol)	(Symbol)	(Symbol)	(Symbol)
(Symbol)	(Symbol)	(Symbol)	(Symbol)
(Symbol)	(Symbol)	(Symbol)	(Symbol)
(Symbol)	(Symbol)	(Symbol)	(Symbol)
(Symbol)	(Symbol)	(Symbol)	(Symbol)
(Symbol)	(Symbol)	(Symbol)	(Symbol)
(Symbol)	(Symbol)	(Symbol)	(Symbol)
(Symbol)	(Symbol)	(Symbol)	(Symbol)
(Symbol)	(Symbol)	(Symbol)	(Symbol)
(Symbol)	(Symbol)	(Symbol)	(Symbol)
(Symbol)	(Symbol)	(Symbol)	(Symbol)
(Symbol)	(Symbol)	(Symbol)	(Symbol)
(Symbol)	(Symbol)	(Symbol)	(Symbol)
(Symbol)	(Symbol)	(Symbol)	(Symbol)



NEW PLANT LIST

3 Liquidambar styraciflua <Sweetgum> 6-7ft.
or sub Quercus <any native species> along Brgress Avenue

1 Picea omorika <Serbian Spruce> 6-7ft.

150 Rhus aromatica 'Lo Gro' 1gal pots

50 Daylily 'Pardon Me' or 'Happy Returns' 1gal pots

15 Myrica pennsylvanica 2 gal pots

3 Hydrangea paniculate 'Bobo' 2 gal pots

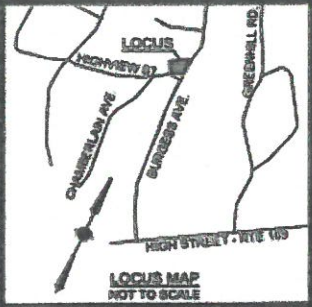
6 Ilex glabra 'Compacta' 2 gal pots

2 Rhododendron 'PJM' 5 gal pots

1 Syringa patula 'Miss Kim' 3 gal pot

12 Forsythia <any variety but uniform variety> 3 gal pots

- ### LANDSCAPE NOTES
1. SOIL TO BE GOOD QUALITY, FERTILE, FREE OF WEEDS, STICKS, STONES OVER 3/4", AND ROOTS. SPREAD TO A MINIMUM OF 6" OVER ALL PLANTED AREAS.
 2. NURSERY STOCK SHALL MEET THE STANDARDS OF THE AMERICAN ASSOCIATION OF NURSERMEN AS TO GRADES AND QUALITY. ONLY NURSERY-GROWN PLANTS, GROWN IN ACCORDANCE WITH ACCEPTED HORTICULTURAL PRACTICES AND GROWN UNDER CLIMATIC CONDITIONS SIMILAR TO THOSE IN THE LOCALITY OF THE PROJECT FOR AT LEAST (2) YEARS, WILL BE ACCEPTED.
 3. SET PLANTS PLUMB AND AT A LEVEL THAT AFTER SETTLEMENT THEY BEAR THE SAME RELATION TO THE SURROUNDING GROUND AS THEY BORE TO THE GROUND FROM WHICH THEY WERE DUG. SETTLE BACKFILL MATERIAL FOR PLANTS, THOROUGHLY AND PROPERLY BY FIRING OR TAMPING FORM SAUCERS CAPABLE OF HOLDING WATER ABOUT INDIVIDUAL PLANTS, BY PLACING RIDGES OF PLANTING SOIL AROUND EACH.
 4. WATERING: WATER ALL PLANTS WITHIN 48 HOURS AFTER PLANTING IF CONDITIONS WARRANT, AND AS MANY TIMES THEREAFTER TO SUSTAIN HEALTHY CONDITIONS. SATURATE THE SOIL AROUND EACH PLANT THOROUGHLY AT EACH WATERING.
 5. PRUNING: PRUNE PLANTS, AS DIRECTED BY THE OWNER, AT THE PROJECT SITE BEFORE OR IMMEDIATELY AFTER PLANTING IN ACCORDANCE WITH THE BEST HORTICULTURAL PRACTICE. CUT BROKEN, DEAD OR INJURED BRANCHES FLUSH WITH THE TRUNK OR THE LEAF. REMOVE ALL BROKEN ROOTS ON THE PLANT SIDE OF THE BREAK. PAINT CUTS OVER 3/4" IN DIAMETER WITH TREE WOUND PAINT. PRUNING SHALL NOT DEFEND OR OTHERWISE DESTROY THE TYPICAL SHAPE OR SYMMETRY OF THE PLANT AND SHALL NOT REDUCE THE HEIGHT BY MORE THAN ONE-THIRD. DO NOT CUT BACK THE LEADER OF THE PLANT UNLESS DIRECTED BY THE LANDSCAPE ARCHITECT.
 6. FERTILIZER: FERTILIZE SHRUB BEDS WITH 10-6-4 FERTILIZER AT A RATE OF THREE POUNDS PER 100 SQUARE FEET OF SURFACE AREA, BROADCAST. APPLY THE FERTILIZER UNIFORMLY TO THE SURFACE BEDS AND WORK INTO THE UPPER TWO INCHES OF SOIL. FERTILIZE INDIVIDUAL TREES AT THE RATE OF ONE AGRIFORM PELLETT PER INCH OF TRUNK DIAMETER (FOLLOW MANUFACTURER'S WRITTEN INSTRUCTIONS). APPLY A SECOND APPLICATION OF FERTILIZER TO ALL PLANT ITEMS AT THE SAME SPECIFIED RATES OVER THE MULCH AT THE END OF AN EIGHT WEEK PERIOD.
 7. GUARANTEE: ALL PLANTS FURNISHED BY THE CONTRACTOR SHALL BE GUARANTEED FOR A PERIOD OF ONE (1) YEAR AFTER PRELIMINARY INSPECTION AND SHALL BE ALIVE AND IN SATISFACTORY GROWTH AT THE END OF THE GUARANTEE PERIOD. ALL DEAD OR DYING PLANT MATERIAL SHALL BE REPLACED AT ONCE BY THE CONTRACTOR, FREE OF CHARGE.
 8. PLANTING NUMBERS AND SPECIES ARE SUBJECT TO CHANGE BASED ON AVAILABILITY AT THE TIME OF INSTALLATION. CONTRACTOR TO COORDINATE WITH LANDSCAPING SUPPLIER AND SUBMIT REVISED LIST TO LOCAL BUILDING DEPARTMENT.
 9. MINIMUM BRANCH HEIGHT FOR ALL SHADE TREES WILL BE 6' TALL.
 10. MINIMUM HEIGHT FOR EVERGREEN TREES WILL BE 6' TALL.
 11. MINIMUM SIZE FOR SHRUBS WILL BE 3" TALL.
 12. GROUND COVER PLANTINGS WILL BE PLACED IN A MODIFIED PLANTING BED 18" DEEP MINIMUM.
 13. ALL REMAINING AREAS DISTURBED WILL BE LOANED AND SEEDED UPON COMPLETION OF ALL CONSTRUCTION.



PERMITTING SET

No	DATE	DESCRIPTION
1	02-04-21	REVISE GRADES ADD SHED
2	03-03-21	ADD LANDSCAPING
3	04-05-21	OUTLINED DISTURBANCE AREA

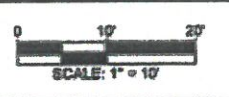
DRAWN BY: MP/JALL
CHECKED BY: EPJ
DESIGNED BY:

BUILDING PERMIT PLOT PLAN

5 HIGHVIEW STREET
IN
WESTWOOD
(NORFOLK COUNTY)
MASSACHUSETTS

DECEMBER 2, 2019

PREPARED FOR:
SOUTH SHORE HABITAT
FOR HUMANITY
20 MATHWESON DRIVE
WEYMOUTH
MASSACHUSETTS
02189



SEAL OF PROFESSIONAL ENGINEER

SHEET *8* **OF** **1**

JOB NUMBER: 01-2019-031