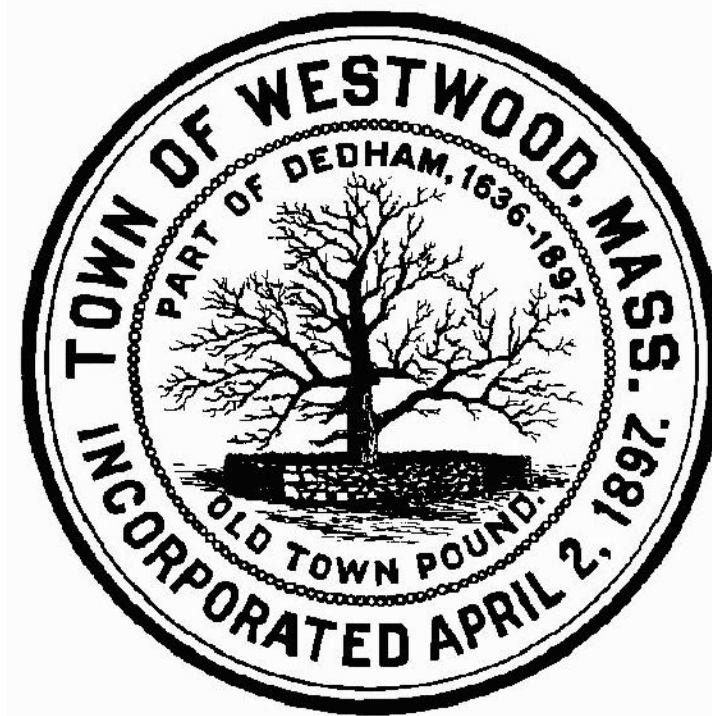


**TOWN OF WESTWOOD, MASSACHUSETTS
DEPARTMENT OF PUBLIC WORKS
NEIGHBORHOOD TRAFFIC CALMING PROJECT
EVERETT ST/FORBES RD/CANTON STREET (DOWNEY ST TO OCEANIA WAY)
APRIL 2015**



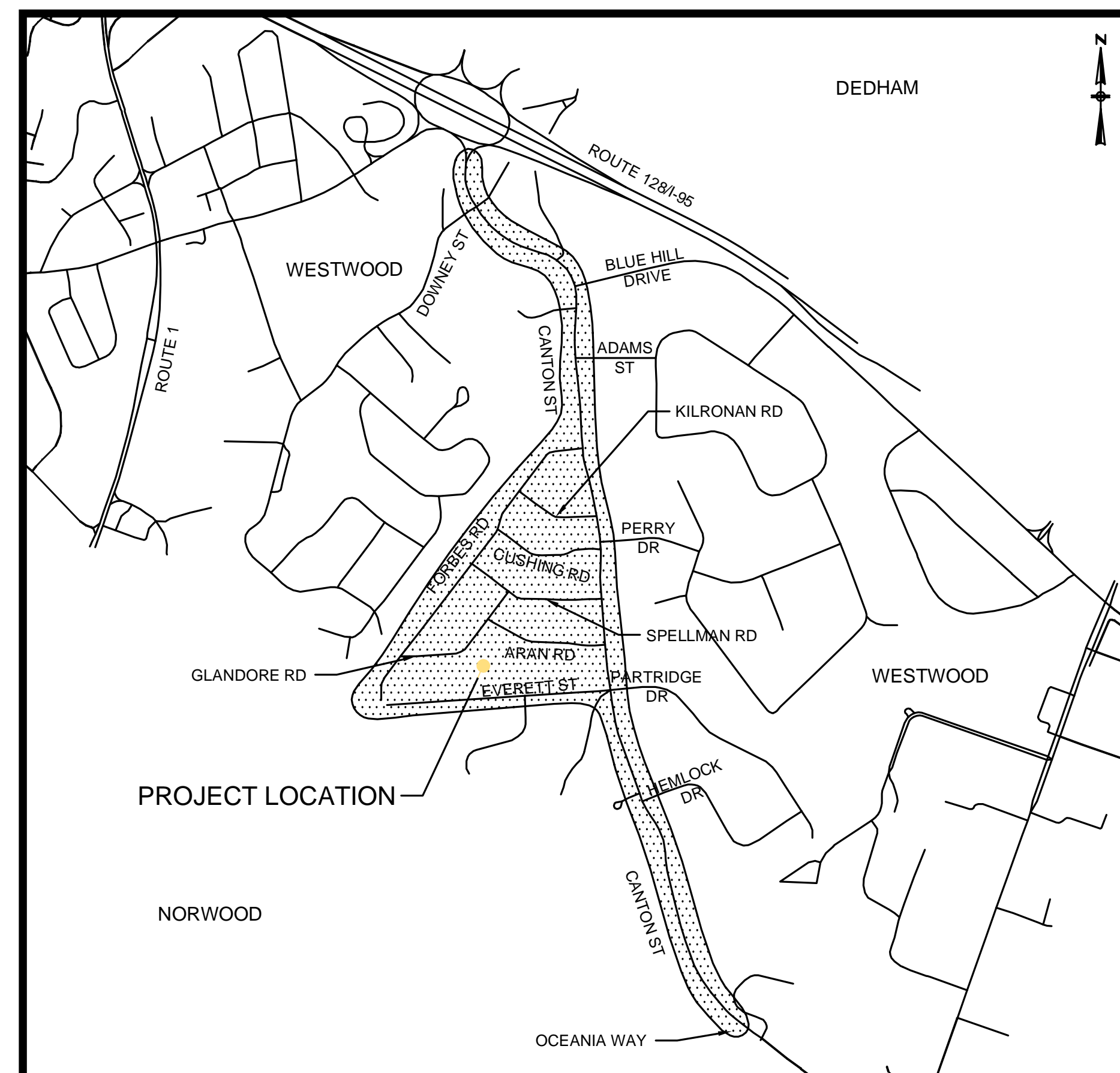
BOARD OF SELECTMEN

PHILIP N. SHAPIRO, CHAIRMAN
PATRICK J. AHEARN, CLERK
NANCY C. HYDE, THIRD MEMBER

TOWN ADMINISTRATOR

MICHAEL A. JAILLET

PROGRESS PLANS



LOCUS MAP
NOT TO SCALE

PREPARED BY:

BETA Group, Inc.
Engineers • Planners • Landscape Architects
Lincoln, RI - Norwood, MA - Hartford, CT
315 Norwood Park South, Norwood, MA 02062 781.255.1982
email: BETA@BETA-inc.com

PLAN INDEX

<u>SHEET NO.</u>	<u>DESCRIPTION</u>
1	TITLE AND INDEX
2	LEGEND AND ABBREVIATIONS
3	KEY PLAN
4-22	CONSTRUCTION PLANS
23-32	GRADING AND TIE PLANS
33	TRAFFIC SIGN SUMMARY
34-35	TEMPORARY TRAFFIC CONTROL PLANS
36-40	CONSTRUCTION DETAILS

LEGEND

GENERAL SYMBOLS

EXISTING	PROPOSED	DESCRIPTION
		CURB OR BERM (TYPE AS NOTED)
		EDGE OF PAVEMENT
		CATCH BASIN (OR GUTTER INLET, LEACHING BASIN, DROP INLET, CATCH BASIN CURB INLET)
		ELECTRIC HANDHOLE (NUMBER AS NOTED)
		ELECTRIC MANHOLE
		TELEPHONE MANHOLE
		WATER MANHOLE
		SEWER MANHOLE
		DRAINAGE MANHOLE
		GAS GATE
		WATER GATE
		CURB STOP
		HYDRANT
		FIRE ALARM BOX
		PARKING METER
		STREET LIGHT POLE
		UTILITY POLE
		UTILITY POLE w/ LIGHT
		GUY POLE
		DRAIN PIPE (SIZE AS NOTED)
		SEWER MAIN (SIZE AS NOTED)
		ELECTRIC DUCT
		GAS MAIN (SIZE AS NOTED)
		WATER MAIN (SIZE AS NOTED)
		TELEPHONE DUCT (SIZE AS NOTED)
		MAIL BOX
		WOOD GUARD RAIL, STEEL BEAM GUARD, WOOD OR STEEL POSTS (TYPE AS NOTED)
		STEEL GUARD RAIL, STEEL POSTS (TYPE NOTED)
		STONE WALL
		RETAINING WALL (TYPE NOTED)
		HIGHWAY/PROPERTY BOUND (TYPE AS NOTED)
		STATE HIGHWAY LAYOUT LINE (SHLO)
		CITY, TOWN OR COUNTY LAYOUT LINE (R.O.W.)
		CITY, TOWN, COUNTY OR STATE BOUNDARY LINE
		PROPERTY LINE
		EASEMENT LINE (TYPE NOTED)
		CONSTRUCTION BASELINE
		SURVEY LINE
		RAILROAD OR STREET RAILWAY TRACKS WITH SIDELINES
		WHEELCHAIR RAMP
		TREE AND BUSH (SIZE AND TYPE AS NOTED)
		HEDGE
		FENCE (SIZE AND TYPE AS NOTED)
		EDGE OF WETLAND w/ FLAGGED NUMBER
		EDGE OF RIVER/STREAM LINE
		100-FT. WETLAND BUFFER LIMIT
		100-FT. RIVER FRONT LIMIT
		200-FT. RIVER FRONT LIMIT
		WOODED AREA / LIMIT OF CLEARING
		SPOT GRADE
		SAW CUT LINE
		TEST PIT
		BORING
		EROSION CONTROL BARRIER/COMPOST FILTER TUBES

ABBREVIATIONS

GENERAL

AADT	ANNUAL AVERAGE DAILY TRAFFIC
ABAN.	ABANDON
ADJ.	ADJUST
ALT.	ALTERATION
APPROX.	APPROXIMATE
B	BASELINE
B.B.	BITUMINOUS BERM
B.C.	BITUMINOUS CURB
BD OR BND	BOUND
BLDG.	BUILDING
B.O.	BY OTHERS
BOS	BOTTOM OF SLOPE
BOW	BOTTOM OF WALL
BSW	BACK OF SIDEWALK
C.C.	CONCRETE CURB
CEM.	CEMENT
CLF	CHAIN LINK FENCE
CONC.	CONCRETE
CONST.	CONSTRUCTION
CONT.	CONTINUOUS
DWY	DRIVEWAY
E.P., EOP	EDGE OF PAVEMENT
EL.	ELEVATION
ESMT.	EASEMENT
EXIST.	EXISTING
FDN.	FOUNDATION
GRAN.	GRANITE
GC	GRANITE CURB
HOR.	HORIZONTAL
IP	IRON PIPE
JCT	JUNCTION
LP	LOW POINT
MB	MAIL BOX
MHB	MASSACHUSETTS HIGHWAY BOUND
O.C.	ON CENTER
PCC	POINT OF COMPOUND CURVATURE
PC	POINT OF CURVATURE
PRC	POINT OF REVERSE CURVATURE
PI	POINT OF INTERSECTION
PT	POINT OF TANGENCY
PVC	POINT OF VERTICAL CURVATURE
PVI	POINT OF VERTICAL INTERSECTION
PVT	POINT OF VERTICAL TANGENCY
PERM.	PERMANENT
PGL	PROFILE GRADE LINE
PROJ.	PROJECT
PROP.	PROPOSED
PVC	POINT OF VERTICAL CURVATURE
PVMT.	PAVEMENT
R	RADIUS OF CURVATURE
R&D	REMOVE AND DISCARD
R&R	REMOVE AND RESET
R&S	REMOVE AND STACK
RD.	ROAD
REM.	REMOVE
REMOD.	REMODEL
RET.	RETAIN
RR	RAILROAD
RT.	RIGHT
SB	SOUTH BOUND OR STONE BOUND
SDWK.	SIDEWALK
SHT.	SHEET
SHLD.	SHOULDER
ST.	STREET
STA.	STATION
TEMP.	TEMPORARY
TOS	TOP OF SLOPE
TOW	TOP OF WALL
TYP.	TYPICAL
VAR.	VARIABLE
VC	VERTICAL CURVE
VERT.	VERTICAL
VGC	VERTICAL GRANITE CURB
WCR	WHEELCHAIR RAMP

TRAFFIC SIGNAL SYSTEMS

R	STEADY CIRCULAR RED
Y	STEADY CIRCULAR AMBER
G	STEADY CIRCULAR GREEN
FR	FLASHING CIRCULAR RED
FY	FLASHING CIRCULAR AMBER
+FY	FLASHING YELLOW LEFT ARROW
R→	STEADY RED RIGHT ARROW
Y→	STEADY AMBER RIGHT ARROW
G→	STEADY GREEN RIGHT ARROW
←R	STEADY RED LEFT ARROW
←Y	STEADY AMBER LEFT ARROW
←G	STEADY GREEN LEFT ARROW
W	STEADY WALK (PERSON WALKING) - LUNAR WHITE
DW	STEADY DON'T WALK (HAND) - PORTLAND ORANGE
FDW	FLASHING DON'T WALK (FLASHING HAND) - PORTLAND ORANGE

UTILITIES

ACCOMP	ASPHALT COATED CORRUGATED METAL PIPE
CAP	CORRUGATED ALUMINUM PIPE
CB	CATCH BASIN
CBCI	CATCH BASIN WITH CURB INLET
CI	CURB INLET
CIP	CAST IRON PIPE
CIT	CHANGE IN TYPE
CMP	CORRUGATED METAL PIPE
COND.	CONDUIT
CPP	CORRUGATED PLASTIC PIPE
CSP	CORRUGATED STEEL PIPE
DI	DROP INLET
DIP	DUCTILE IRON PIPE
EL. (OR ELEV.)	ELEVATION
F&C	FRAME AND COVER
F&G	FRAME AND GRATE
FM	FORCE MAIN
GI	GUTTER INLET
GIP	GALVANIZED IRON PIPE
GG	GAS GATE
HDW	HEADWALL
HYD.	HYDRANT
INV.	INVERT ELEVATION
LP	LIGHT POLE
MH	MANHOLE
PVC	POLY-VINYL-CHLORIDE PIPE
PWW	PAVED WATER WAY
RCP	REINFORCED CONCRETE PIPE (CLASS III UNLESS NOTED)
SD	SUBDRAIN
SMH	SEWER MANHOLE
TS	TRAFFIC SIGNAL
TSV&B	TAPPING SLEEVE, VALVE AND BOX
UP	UTILITY POLE
UPL	UTILITY POLE w/ LIGHT
UPT	UTILITY POLE w/ TRANSFORMER
VCP	VITRIFIED CLAY PIPE
WIP	WROUGHT IRON PIPE
WG	WATER GATE
WM	WATER METER/WATER MAIN

TRAFFIC SIGNAL SYMBOLS

EXISTING	PROPOSED	DESCRIPTION
		CONTROL CABINET GROUND MOUNTED WITH FOUNDATION
		CONTROL CABINET POLE MOUNTED
		CONTROLLER PHASE
		MAST ARM, SHAFT & BASE (ARM LENGTH AS NOTED)
		VEHICULAR SIGNAL HEAD (ALPHA-NUMERIC DESIGNATION AS NOTED)
		VEHICULAR SIGNAL HEAD, OPTICALLY PROGRAMMED
		VEHICULAR SIGNAL HEAD (REMOVED & RESET)
		FLASHING BEACON
		PEDESTRIAN SIGNAL HEAD
		PEDESTRIAN SIGNAL HEAD, OPTICALLY PROGRAMMED
		PULL BOX 12"x12" OR HANDHOLE
		LOOP DETECTOR
		PEDESTRIAN PUSH BUTTON, SIGN (DIRECTIONAL ARROW AS SHOWN) AND SADDLE
		PRE-EMPTION DETECTOR
		PRE-EMPTION CONFIRMATION STROBE
		SIGNAL CONDUIT (SINGLE RUN)
		SIGNAL CONDUIT (DOUBLE RUN)
		SIGNAL POST & BASE
		MAGNETIC DETECTOR
		SCHOOL ZONE SPEED LIMIT SIGN
		MICROWAVE OR ULTRASONIC DETECTOR
		VIDEO DETECTION CAMERA
		VIDEO DETECTION ZONE

PAVEMENT MARKINGS AND SIGNING SYMBOLS

PROPOSED

CW	CROSSWALK, 2 - 12" WHITE LINES (8" WIDTH)
SL	STOP LINE - 12" WHITE LINE 4' BEHIND CW (TYP.)
SWEL	SOLID WHITE EDGE LINE - 4"
SWCHL	SOLID WHITE CHANNELIZING LINES - 12" (SPACING NOTED)
SWGL	SOLID WHITE GORE LINE 12" @ 33°, (SPACING NOTED)
SWLL	SOLID WHITE LANE LINE - 4"
SWPL	SOLID WHITE PARKING LINE - 4"
BWLL	BROKEN WHITE LANE LINE - 4"
DWLEx	DOTTED WHITE LANE EXTENSION LINE - 4" (2' LINE & 6' GAP)
DYLEx	DOTTED YELLOW LANE EXTENSION LINE - 4" (2' LINE & 6' GAP)
BYCL	BROKEN YELLOW CENTERLINE - 4"
DYCL	DOUBLE YELLOW CENTERLINE - 2 - 4" LINES
SYEL	SOLID YELLOW EDGE LINE - 4"
SYGL	SOLID YELLOW GORE LINE 12" @ 33°, (SPACING NOTED)
SYLL	SOLID YELLOW LANE LINE - 4"
SYCTEL	SOLID YELLOW CYCLE TRACK EDGE LINE - 4"
DYCTCL	DOTTED YELLOW CYCLE TRACK CENTERLINE - 4" (3' LINE & 9' GAP)
SCHOOL	SCHOOL ZONE - WHITE
	HANDICAP SYMBOL - WHITE
	PAVEMENT ARROW - WHITE
ONLY	LEGEND "ONLY" - WHITE

PAVEMENT TREATMENT LEGEND



BOX WIDENING AREA

C:\4900s\4969 - Westwood - CEF Traffic Calming\Drawing Files\Plan Set\4969 - Legend.dwg

DRAWN BY:	CJT
DESIGNED BY:	CJT
CHECKED BY:	CMR

PROGRESS PLANS

BETA Group, Inc.
Engineers • Planners • Landscape Architects
Lincoln, RI - Norwood, MA - Hartford, CT

315 Norwood Park South
Norwood, MA 02062
781.255.1982
email: BETA@BETA-inc.com

SCALE:

NOT TO SCALE

UNLESS OTHERWISE NOTED OR CHANGED BY REPRODUCTION

C/E/F NEIGHBORHOOD TRAFFIC CALMING

LEGEND & ABBREVIATIONS

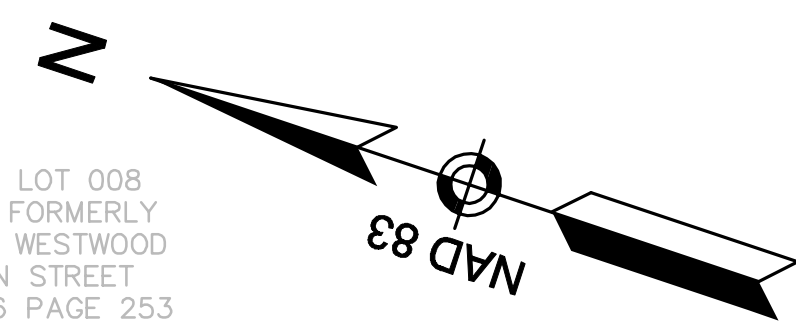
WESTWOOD, MASSACHUSETTS

ISSUE DATE: APRIL 2015

SHEET 2 of xx

NUMBER	DATE	MADE BY	CHECKED BY	DESCRIPTION
REVISIONS				

MAP 18 LOT 008
NOW OR FORMERLY
TOWN OF WESTWOOD
CANTON STREET
BOOK 596 PAGE 253



MAP 18 LOT 61
NOW OR FORMERLY
ROTONDO, ANDREW J. JR.
84 CANTON ST
BK 10185 PG 506

MAP 18 LOT 62
NOW OR FORMERLY
LEVINE, GERALDINE M.
90 CANTON ST
BK 10020 PG 111

MAP 18 LOT 067
NOW OR FORMERLY
SVETLANA PUCHAK
4 METCALF RD
BK 27141 PG 492

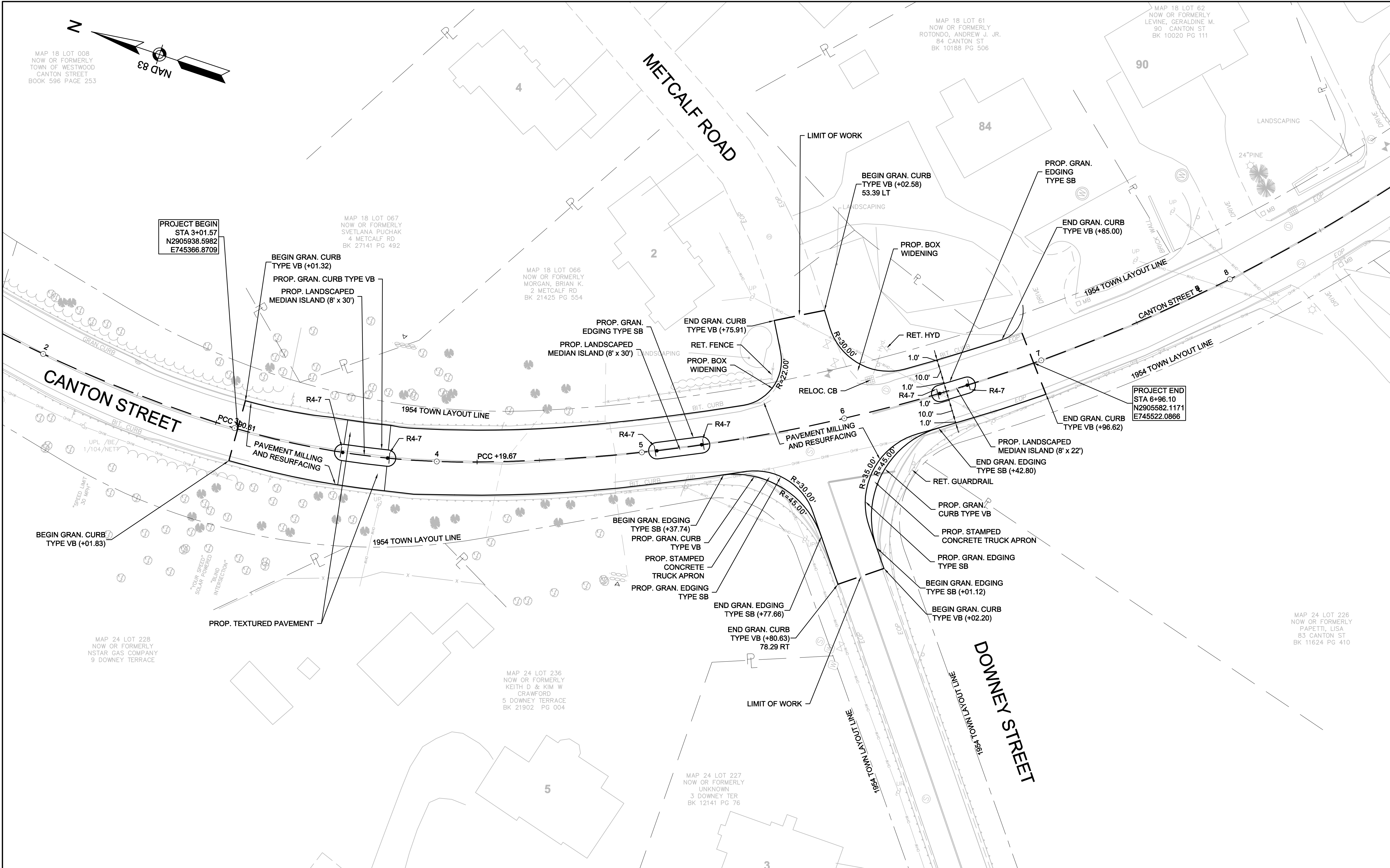
MAP 18 LOT 066
NOW OR FORMERLY
MORGAN, BRIAN K.
2 METCALF RD
BK 21425 PG 554

MAP 24 LOT 228
NOW OR FORMERLY
NSTAR GAS COMPANY
9 DOWNEY TERRACE

MAP 24 LOT 236
NOW OR FORMERLY
KEITH D & KIM W
CRAWFORD
5 DOWNEY TERRACE
BK 21902 PG 004

MAP 24 LOT 227
NOW OR FORMERLY
UNKNOWN
3 DOWNEY TER
BK 12141 PG 76

MAP 24 LOT 226
NOW OR FORMERLY
PAPETTI, LISA
83 CANTON ST
BK 11624 PG 410



C:\4900s\4969 - Westwood - CEF Traffic Calming\Drawing Files\Plan Set\4969 - Const.dwg

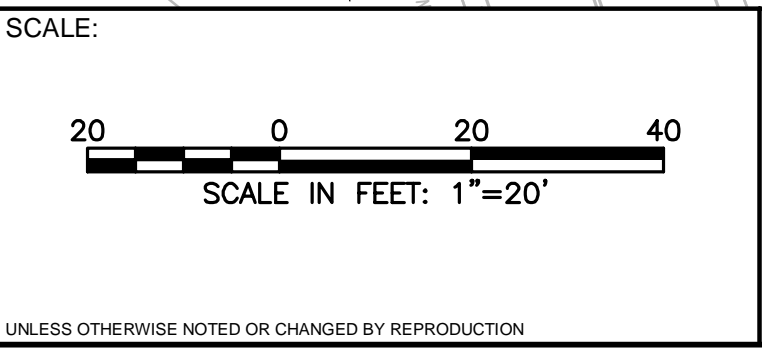
NUMBER	DATE	MADE BY	CHECKED BY	DESCRIPTION

DRAWN BY: TAD
DESIGNED BY: JCC
CHECKED BY: KYH

PROGRESS PLANS

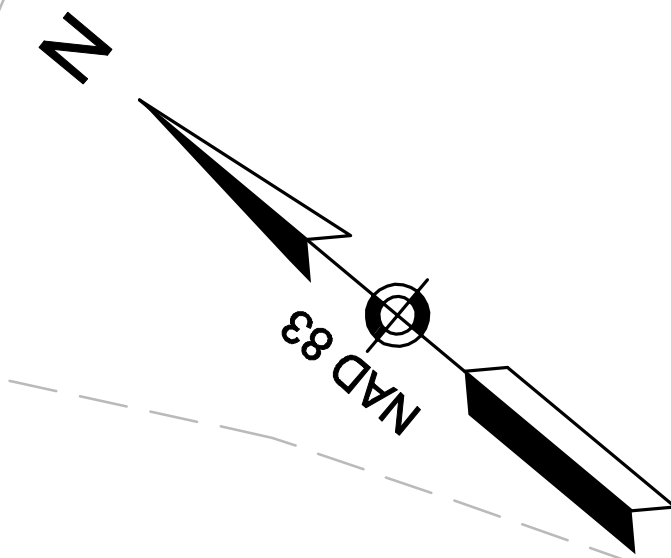
BETA Group, Inc.
Engineers • Planners • Landscape Architects
Lincoln, RI - Norwood, MA - Hartford, CT

315 Norwood Park South
Norwood, MA 02062
781.255.1982
email: BETA@BETA-inc.com



**C/E/F NEIGHBORHOOD TRAFFIC CALMING
CONSTRUCTION PLAN
LOCATION 1 & LOCATION 2**
WESTWOOD, MASSACHUSETTS

ISSUE DATE: APRIL 2015
SHEET: **4 of xx**



MAP 18 LOT 11
NOW OR FORMERLY
GERMANO, JEANNIE C.
ADDRESS
BK 8031 PG 725

MAP 25 LOT 56
NOW OR FORMERLY
PICCIONE, MARIA
150 CANTON ST
BK 11727 PG 209

MAP 25 LOT 194
NOW OR FORMERLY
KOLEINI, AZITA
7 BLUE HILL DR
BK 16623 PG 304

MAP 18 LOT 1
NOW OR FORMERLY
FONTECCHIO, ROSALIE TR.
115 CANTON TER
BK 11808 PG 436

RET. GUARDRAIL
END GRAN. CURB
TYPE VB (+89.70)

BEGIN GRAN. CURB
TYPE VB (+22.21)

PROJECT BEGIN
STA 16+22.84
N2905087.4119
E746285.0439

END GRAN. CURB
TYPE VB (+37.62)

END GRAN. EDGING
TYPE SB (+36.73)

PROP. GRAN.
EDGING TYPE SB

PROP. STAMPED CONCRETE TRUCK APRON

PROP. GRAN.
CURB TYPE VB

PROP. LANDSCAPED
MEDIAN ISLAND (7' X 25')
RET. GUARDRAIL

BEGIN GRAN.
EDGING
TYPE SB
(+93.94)

BEGIN GRAN. CURB
TYPE VB (+64.06)

BEGIN GRAN. EDGING
TYPE SB (+64.06)

PROP. GRAN.
EDGING TYPE SB

R=45.00'

PROP. STAMPED
CONCRETE TRUCK APRON

PROP. GRAN.
CURB TYPE VB

PROP. LANDSCAPED
MEDIAN ISLAND (6' X 20')
END GRAN. EDGING
TYPE SB (+26.28)

BEGIN GRAN. CURB
TYPE VB (+68.26)

PAVEMENT MILLING
AND RESURFACING
R4-7

PC +63.92

CANTON STREET

PROJECT END
STA 14+03.11
N2905230.3458
E746121.8054

BEGIN GRAN. CURB
TYPE VB (+69.43)

R&R SIGN
PROP. GRAN.
EDGING TYPE SB

PAVEMENT MILLING
AND RESURFACING

PROP. GRAN.
EDGING TYPE SB

END GRAN. CURB
TYPE VB (+98.54)

END GRAN. CURB
TYPE VB (+40.63)

PROP. GRAN.
CURB TYPE VB

PROP. LANDSCAPED MEDIAN
ISLAND (8' X 30')

BEGIN GRAN. CURB
TYPE VB (+68.63)

PROJECT BEGIN
STA 12+68.61
N2905277.8144
E745996.0052

MAP 25 LOT 54
NOW OR FORMERLY
TROIANI REALTY TRUST
145 CANTON ST
BK 8538 PG 395

MAP 25 LOT 53
NOW OR FORMERLY
ZAMUDIO, CLARA E.
151 CANTON ST
BK 14027 PG 259

PROJECT END
STA 18+98.26
N2904824.5865
E746349.4368

MAP 24 LOT 235
NOW OR FORMERLY
LISA S. MURRAY LIVING TRUST
115 CANTON ST
BK 22796 PG 457

MAP 25 LOT 55
NOW OR FORMERLY
WEST, PATRICIA A.
129 CANTON ST
BK 11050 PG 523

MAP 25 LOT 52
NOW OR FORMERLY
RHODE KRISTINA
159 CANTON ST
BK 10951 PG 301

MAP 25 LOT 51
NOW OR FORMERLY
MULLINS, JEANETTE F.
9 CURRIER LN
BK 4068 PG 25

C:\4900s\4969 - Westwood - CEF Traffic Calming\Drawing\Plan Set\4969 - Const.dwg

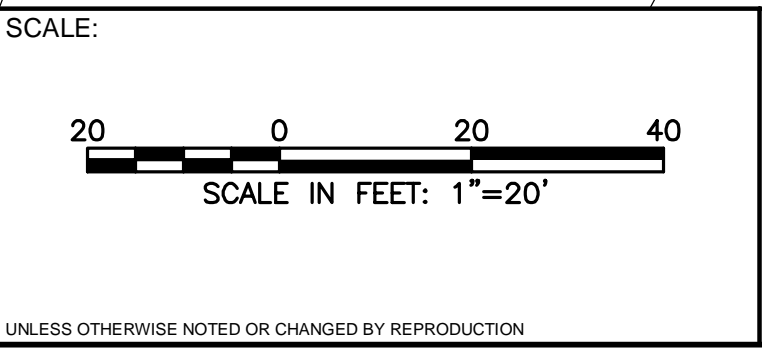
NUMBER	DATE	MADE BY	CHECKED BY	DESCRIPTION

DRAWN BY: TAD
DESIGNED BY: JCC
CHECKED BY: KYH

PROGRESS PLANS

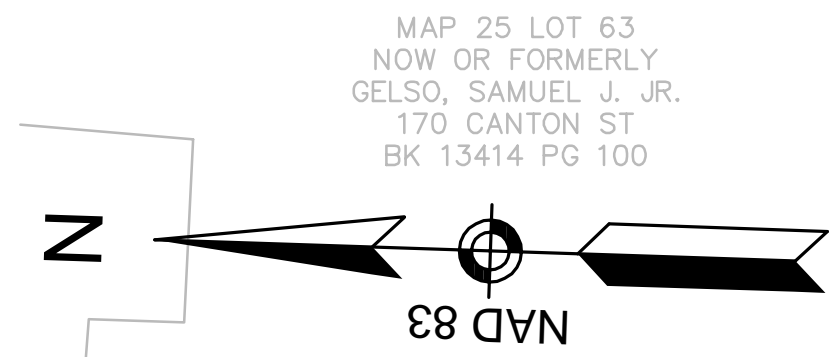
BETA Group, Inc.
Engineers • Planners • Landscape Architects
Lincoln, RI - Norwood, MA - Hartford, CT

315 Norwood Park South
Norwood, MA 02062
781.255.1982
email: BETA@BETA-inc.com



**C/E/F NEIGHBORHOOD TRAFFIC CALMING
CONSTRUCTION PLAN
LOCATION 3 & LOCATION 4**
WESTWOOD, MASSACHUSETTS

ISSUE DATE: APRIL 2015
SHEET: **5 of xx**

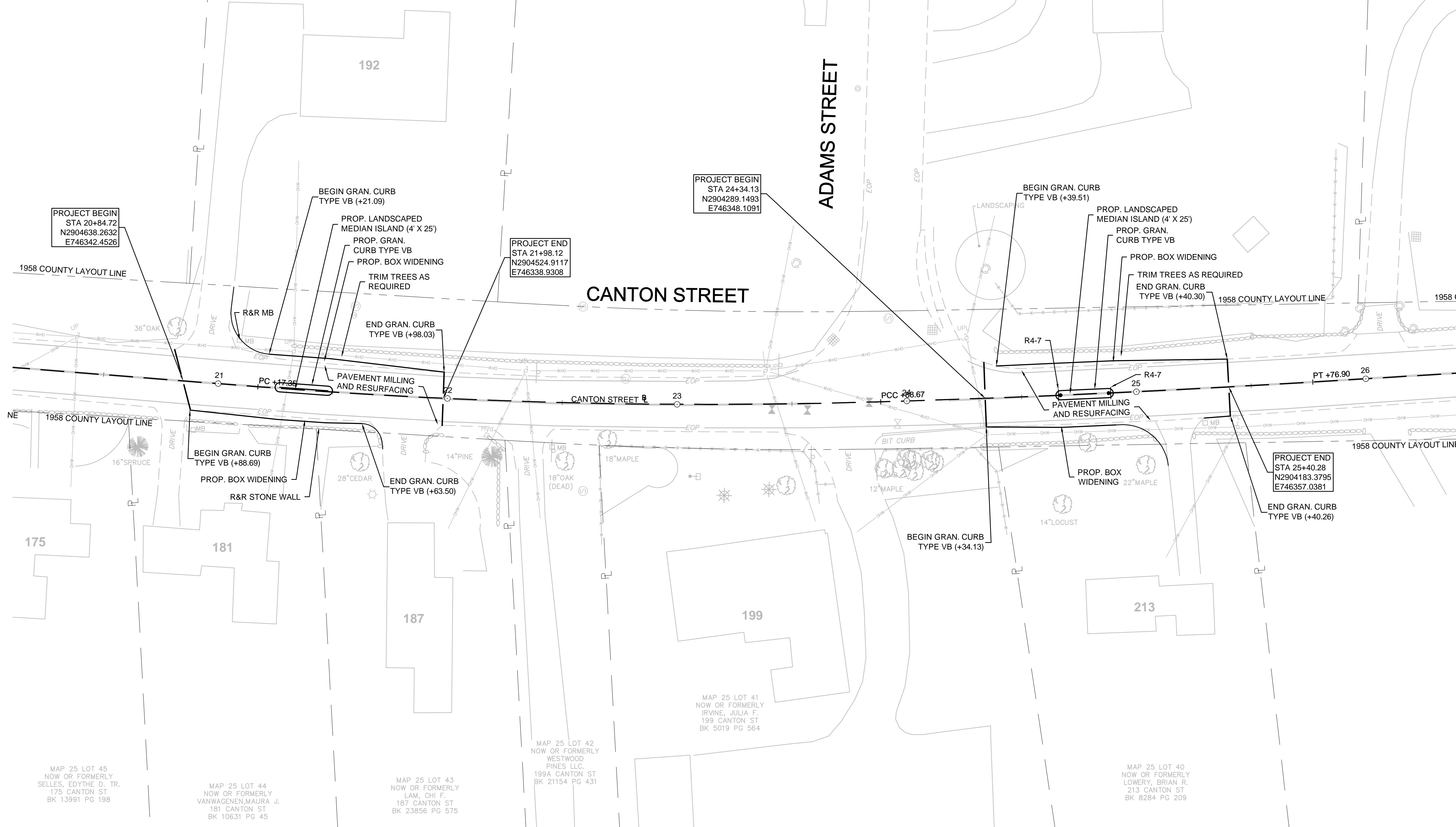


MAP 25 LOT 63
NOW OR FORMERLY
GELSO, SAMUEL J. JR.
170 CANTON ST
BK 13414 PG 100

MAP 25 LOT 64
NOW OR FORMERLY
VENTRESCA NORFOLK REALTY
TRUST
192 CANTON ST
BK 22108 PG 362

MAP 25 LOT 65
NOW OR FORMERLY
SANFILIPPO, JOSEPH
10 ADAMS ST
BK 24286 PG 98

MAP 25 LOT 86
NOW OR FORMERLY
YESSALLIAN, MICHELINA
9 ADAMS ST
BK 15529 PG 466



PROJECT BEGIN
STA 20+84.72
N2904638.2632
E746342.4526

PROJECT END
STA 21+98.12
N2904524.9117
E746338.9308

PROJECT BEGIN
STA 24+34.13
N2904289.1493
E746348.1091

PROJECT END
STA 25+40.28
N2904183.3795
E746357.0381

C:\4900s\4969 - Westwood - CEF Traffic Calming\Drawing Files\Plan Set\4969 - Const.dwg

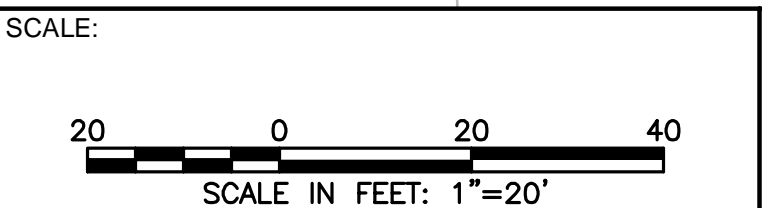
NUMBER	DATE	MADE BY	CHECKED BY	DESCRIPTION

DRAWN BY: TAD
DESIGNED BY: JCC
CHECKED BY: KYH

PROGRESS PLANS

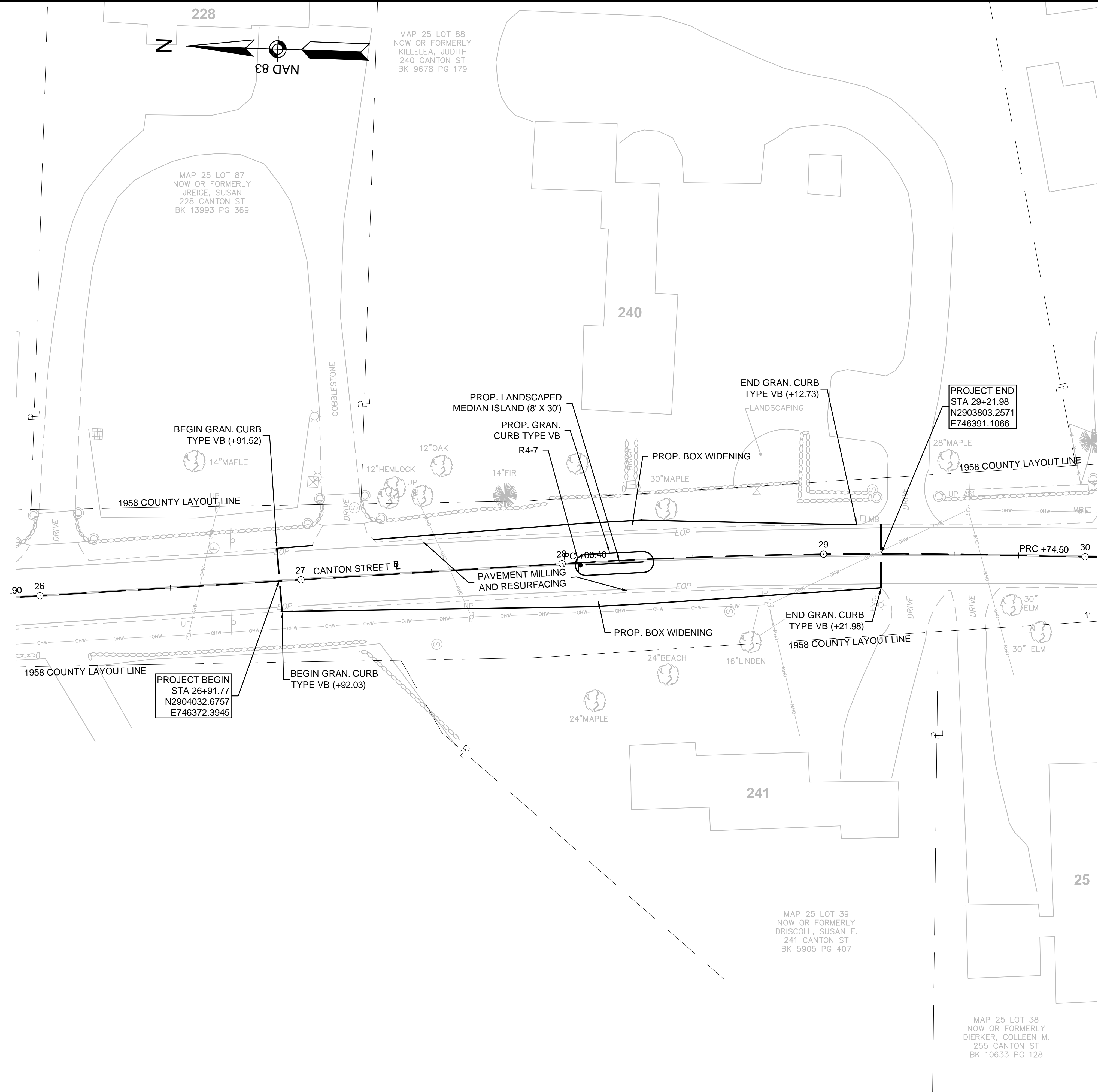
BETA Group, Inc.
Engineers • Planners • Landscape Architects
Lincoln, RI - Norwood, MA - Hartford, CT

315 Norwood Park South
Norwood, MA 02062
781.255.1982
email: BETA@BETA-inc.com



**C/E/F NEIGHBORHOOD TRAFFIC CALMING
CONSTRUCTION PLAN
LOCATION 5 & LOCATION 6**
WESTWOOD, MASSACHUSETTS

ISSUE DATE: APRIL 2015
SHEET: **6 of xx**



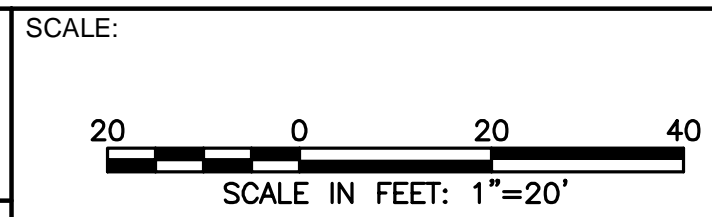
PROJECT BEGIN
 STA 26+91.77
 N2904032.6757
 E746372.3945

PROJECT END
 STA 29+21.98
 N2903803.2571
 E746391.1066

PROGRESS PLANS

BETA Group, Inc.
 Engineers • Planners • Landscape Architects
 Lincoln, RI - Norwood, MA - Hartford, CT

315 Norwood Park South
 Norwood, MA 02062
 781.255.1982
 email: BETA@BETA-inc.com



**C/E/F NEIGHBORHOOD TRAFFIC CALMING
 CONSTRUCTION PLAN
 LOCATION 7**
 WESTWOOD, MASSACHUSETTS

ISSUE DATE: APRIL 2015

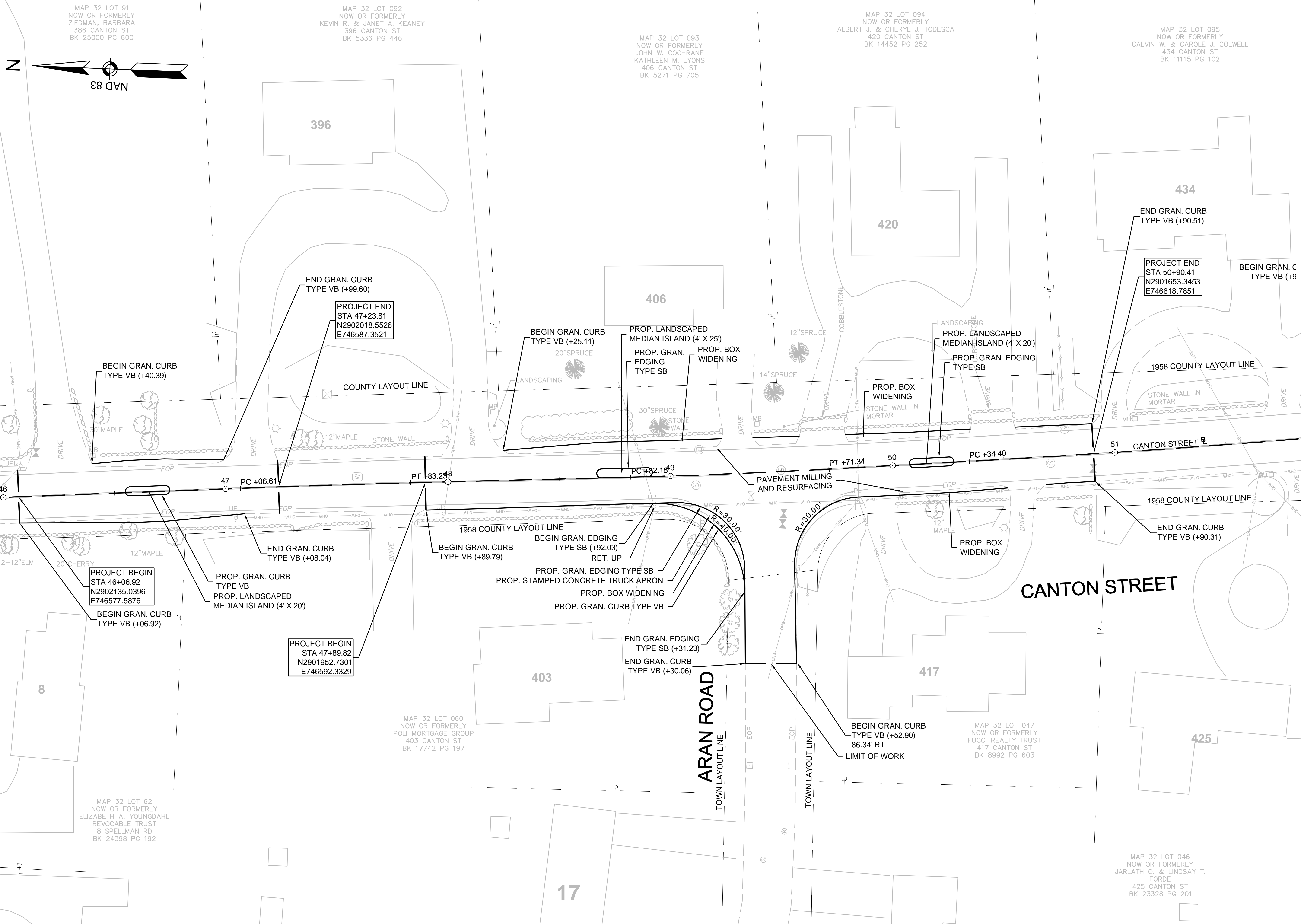
SHEET **7 of xx**

C:\4900s\4969 - Westwood - CEF Traffic Calming\Drawing Files\Plan Set\4969 - Const.dwg

NUMBER	DATE	MADE BY	CHECKED BY	DESCRIPTION
REVISIONS				

DRAWN BY:	TAD
DESIGNED BY:	JCC
CHECKED BY:	KYH

UNLESS OTHERWISE NOTED OR CHANGED BY REPRODUCTION



MAP 32 LOT 91
NOW OR FORMERLY
ZIEDMAN, BARBARA
386 CANTON ST
BK 25000 PG 600

MAP 32 LOT 092
NOW OR FORMERLY
KEVIN R. & JANET A. KEANEY
396 CANTON ST
BK 5336 PG 446

MAP 32 LOT 093
NOW OR FORMERLY
JOHN W. COCHRANE
KATHLEEN M. LYONS
406 CANTON ST
BK 5271 PG 705

MAP 32 LOT 094
NOW OR FORMERLY
ALBERT J. & CHERYL J. TODESCA
420 CANTON ST
BK 14452 PG 252

MAP 32 LOT 095
NOW OR FORMERLY
CALVIN W. & CAROLE J. COLWELL
434 CANTON ST
BK 11115 PG 102

PROJECT BEGIN
STA 46+06.92
N2902135.0396
E746577.5876

PROJECT END
STA 47+23.81
N2902018.5526
E746587.3521

PROJECT END
STA 50+90.41
N2901653.3453
E746618.7851

MAP 32 LOT 62
NOW OR FORMERLY
ELIZABETH A. YOUNGDAHL
REVOCABLE TRUST
& SPELLMAN RD
BK 24398 PG 192

MAP 32 LOT 060
NOW OR FORMERLY
POLI MORTGAGE GROUP
403 CANTON ST
BK 17742 PG 197

MAP 32 LOT 047
NOW OR FORMERLY
FUCCI REALTY TRUST
417 CANTON ST
BK 8992 PG 603

MAP 32 LOT 046
NOW OR FORMERLY
JARLATH O. & LINDSAY T.
FORDE
425 CANTON ST
BK 23328 PG 201

C:\4900s\4969 - Westwood - CEF Traffic Calming\Drawing Files\Plan Set\4969 - Const.dwg

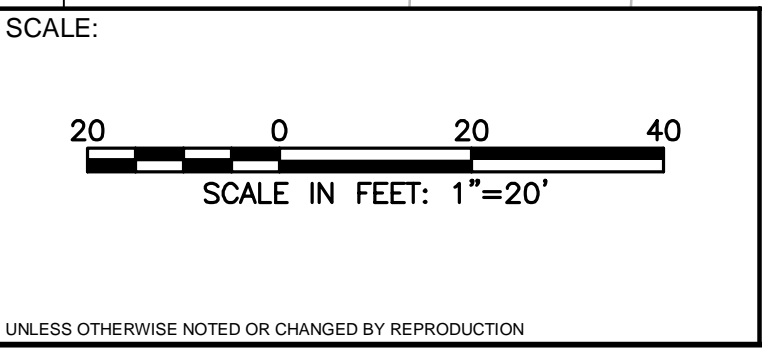
NUMBER	DATE	MADE BY	CHECKED BY	DESCRIPTION
REVISIONS				

DRAWN BY: TAD
DESIGNED BY: JCC
CHECKED BY: KYH

PROGRESS PLANS

BETA Group, Inc.
Engineers • Planners • Landscape Architects
Lincoln, RI - Norwood, MA - Hartford, CT

315 Norwood Park South
Norwood, MA 02062
781.255.1982
email: BETA@BETA-inc.com

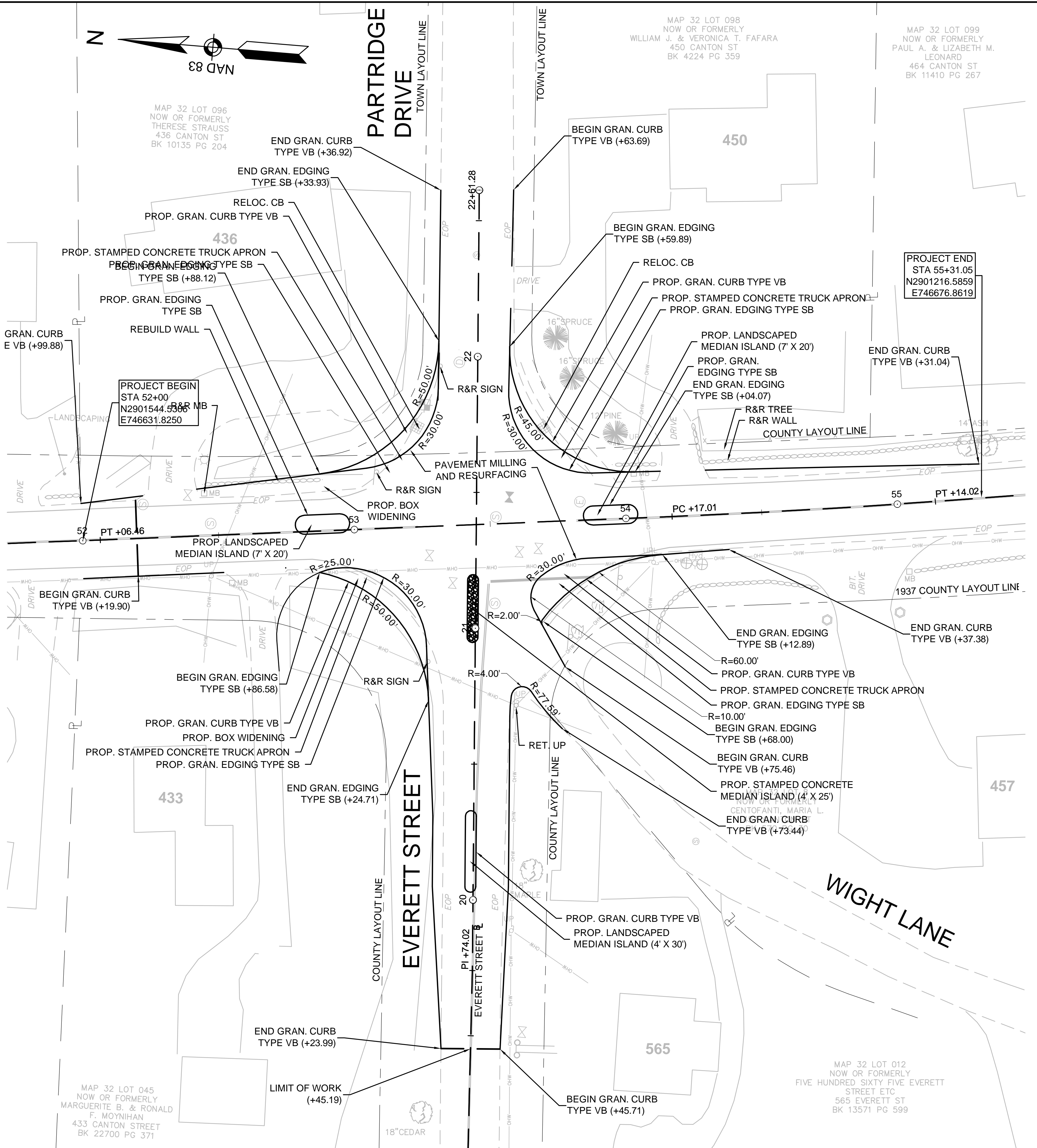
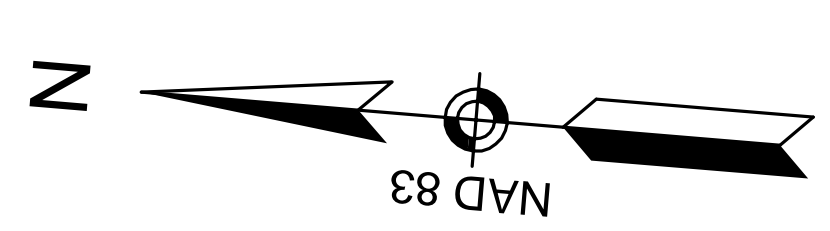


**C/E/F NEIGHBORHOOD TRAFFIC CALMING
CONSTRUCTION PLAN
LOCATION 11 & LOCATION 12**

WESTWOOD, MASSACHUSETTS

ISSUE DATE: APRIL 2015

SHEET: **10 of xx**



C:\4900s\4969 - Westwood - CEF Traffic Calming\Drawing Files\Plan Set\4969 - Const.dwg

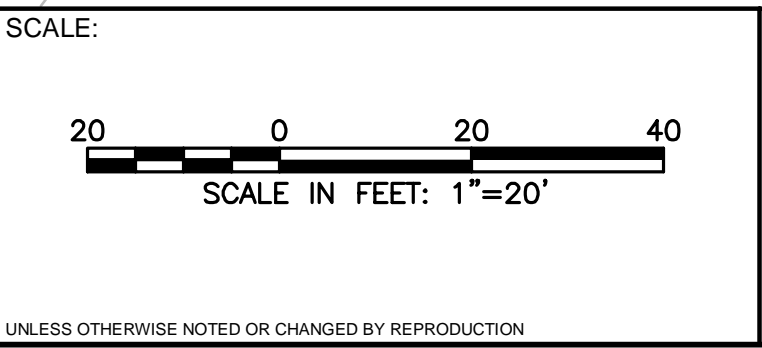
NUMBER	DATE	MADE BY	CHECKED BY	DESCRIPTION
REVISIONS				

DRAWN BY: TAD
 DESIGNED BY: JCC
 CHECKED BY: KYH

PROGRESS PLANS

BETA Group, Inc.
 Engineers • Planners • Landscape Architects
 Lincoln, RI - Norwood, MA - Hartford, CT

315 Norwood Park South
 Norwood, MA 02062
 781.255.1982
 email: BETA@BETA-inc.com



**C/E/F NEIGHBORHOOD TRAFFIC CALMING
 CONSTRUCTION PLAN
 LOCATION 13**

WESTWOOD, MASSACHUSETTS

ISSUE DATE: APRIL 2015

SHEET: **11 of xx**

MAP 32 LOT 191
NOW OR FORMERLY
VINCENT J. DEVIRGLIO
544 CANTON ST
BK 9418 PG 97

MAP 32 LOT 192
NOW OR FORMERLY
JOHN & IMELDA BARUCCI
556 CANTON ST
BK 6779 PG 41

MAP 32 LOT 190
NOW OR FORMERLY
ILANGKUMARAN, SADAYANDI
VIJAYALAKSHMI, RAMASUBBU
15 HEMLOCK DR
BK 22372 PG 496

MAP 32 LOT 103
NOW OR FORMERLY
PETER & DEIRDRE GRIFFIN
504 CANTON ST
BK 19400 PG 201

MAP 32 LOT 104
NOW OR FORMERLY
ILIA V. WOICK
520 CANTON ST
BK 15020 PG 584

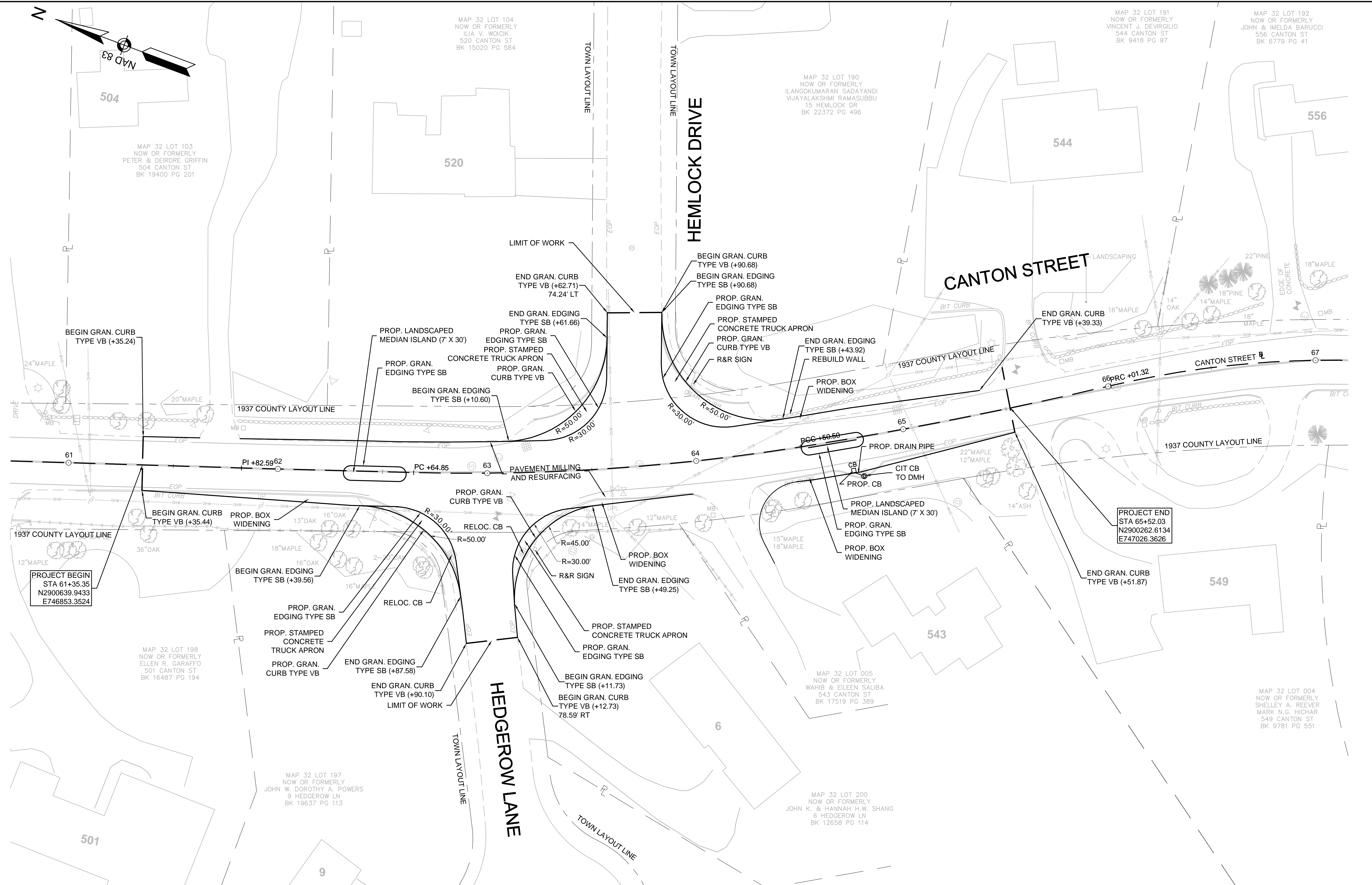
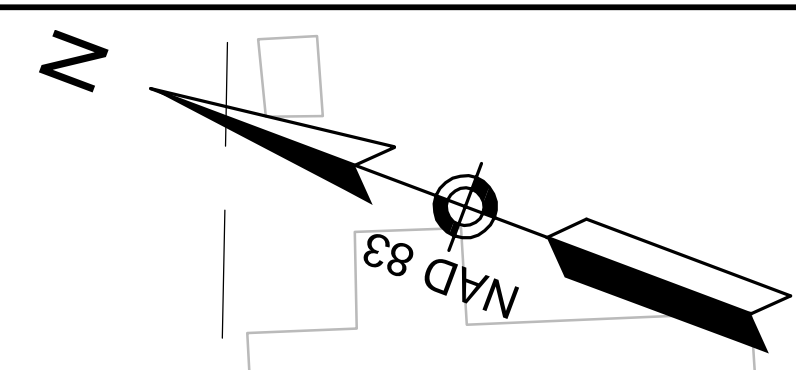
MAP 32 LOT 198
NOW OR FORMERLY
ELLEN R. GARAFFO
501 CANTON ST
BK 16487 PG 194

MAP 32 LOT 197
NOW OR FORMERLY
JOHN W. DOROTHY A. POWERS
9 HEDGEROW LN
BK 19637 PG 113

MAP 32 LOT 005
NOW OR FORMERLY
WAHIB & EILEEN SALIBA
543 CANTON ST
BK 17519 PG 389

MAP 32 LOT 200
NOW OR FORMERLY
JOHN K. & HANNAH H.W. SHANG
6 HEDGEROW LN
BK 12658 PG 114

MAP 32 LOT 004
NOW OR FORMERLY
SHELLEY A. REEVER
MARK N.G. HICHAIR
549 CANTON ST
BK 9781 PG 551



PROJECT BEGIN
STA 61+35.35
N2900639.9433
E746853.3524

PROJECT END
STA 65+52.03
N2900262.6134
E747026.3626

C:\4900s\4969 - Westwood - CEF Traffic Calming\Drawing Files\Plan Set\4969 - Const.dwg

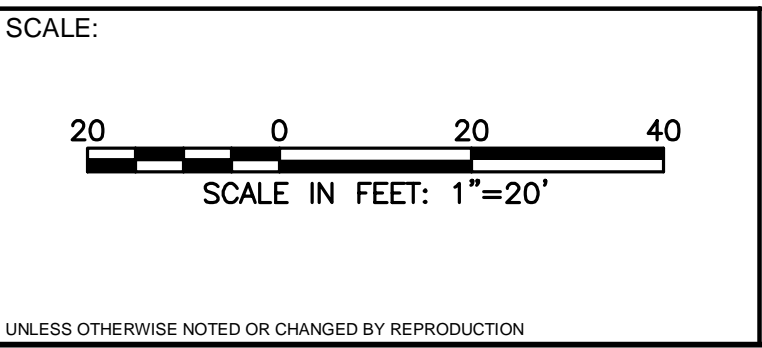
NUMBER	DATE	MADE BY	CHECKED BY	DESCRIPTION
REVISIONS				

DRAWN BY: TAD
DESIGNED BY: JCC
CHECKED BY: KYH

PROGRESS PLANS

BETA Group, Inc.
Engineers • Planners • Landscape Architects
Lincoln, RI - Norwood, MA - Hartford, CT

315 Norwood Park South
Norwood, MA 02062
781.255.1982
email: BETA@BETA-inc.com



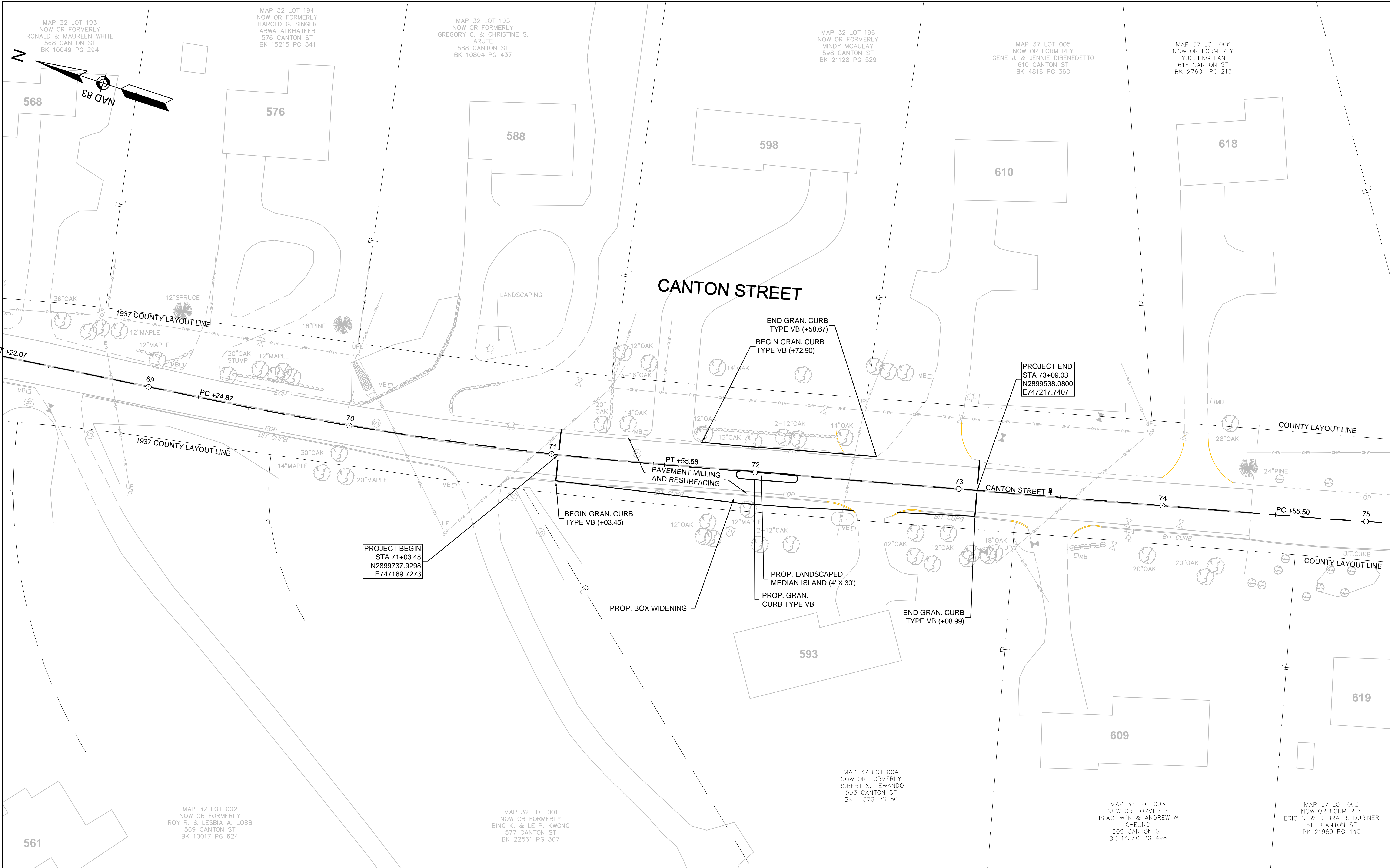
**C/E/F NEIGHBORHOOD TRAFFIC CALMING
CONSTRUCTION PLAN
LOCATION 15**

WESTWOOD, MASSACHUSETTS

ISSUE DATE: APRIL 2015

SHEET: **13 of xx**

C:\4900s\4969 - Westwood - C/E/F Traffic Calming\Drawing\Files\Plan Set\4969 - Const.dwg

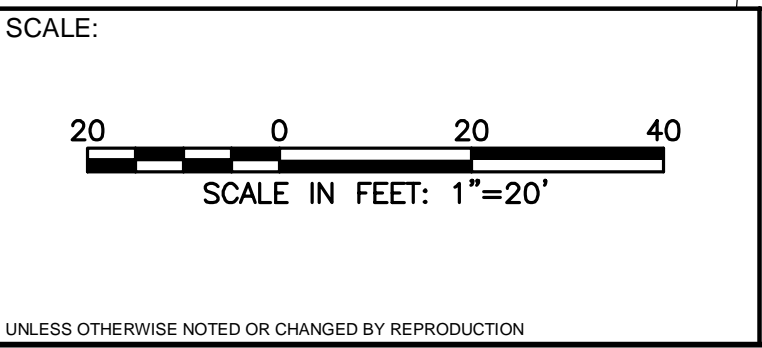


NUMBER	DATE	MADE BY	CHECKED BY	DESCRIPTION

DRAWN BY: TAD
 DESIGNED BY: JCC
 CHECKED BY: KYH

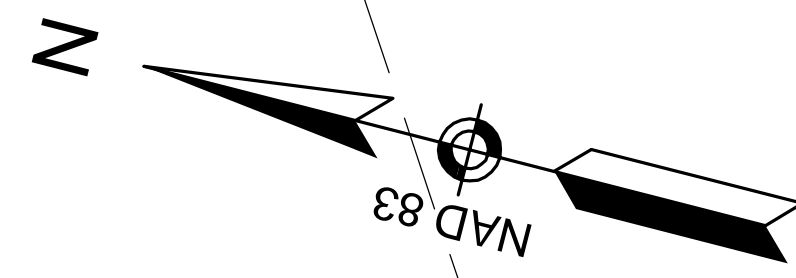
PROGRESS PLANS

BETA Group, Inc.
 Engineers • Planners • Landscape Architects
 Lincoln, RI - Norwood, MA - Hartford, CT
 315 Norwood Park South
 Norwood, MA 02062
 781.255.1982
 email: BETA@BETA-inc.com



**C/E/F NEIGHBORHOOD TRAFFIC CALMING
 CONSTRUCTION PLAN
 LOCATION 16**
 WESTWOOD, MASSACHUSETTS

ISSUE DATE: APRIL 2015
 SHEET: **14 of xx**



MAP 37 LOT 21
NOW OR FORMERLY
DINESH & SHALINI SHARMA
BOOK 23787 PAGE 207

MAP 37 LOT 22
NOW OR FORMERLY
STEVEN & GRETA RAFSKY
BOOK 8059 PAGE 278

MAP 37 LOT 23
NOW OR FORMERLY
LITICIA & RUDOLPH HERMOSA
BOOK 7680 PAGE 263

MAP 37 LOT 8
NOW OR FORMERLY
NSTAR ELECTRIC COMPANY
BK 16422 PG 075
BK 17267 PG 339
BK 24483 PG 517

1937 COUNTY LAYOUT LINE

1937 COUNTY LAYOUT LINE

1937 COUNTY LAYOUT LINE

1937 COUNTY LAYOUT LINE

CANTON STREET

TOWN OF WESTWOOD
TOWN OF NORWOOD

MAP 37 LOT 001
NOW OR FORMERLY
BHAVANI S & SOBHA KODALI
641 CANTON ST
BK 14346 PG 056

641

PROJECT BEGIN
STA 79+62.89
N2898916.3653
E747416.6963

PROJECT END
STA 81+10.60
N2898790.9544
E747494.2891

MAP 22 SHEET 14 LOT E-4
NOW OR FORMERLY
EIP OCEANA WAY LLC
BOOK 32076 PAGE 135

MAP 22 SHEET 13 LOT 3
NOW OR FORMERLY
TWIN LIGHTS REALTY, LLC
663 670 CANTON STREET
BOOK 21435 PAGE 466

MAP 22 SHEET 14 LOT 4
NOW OR FORMERLY
EIP OCEANA WAY LLC
BOOK 32076 PAGE 135

C:\4900s\4969 - Westwood - CEF Traffic Calming\Drawing Files\Plan Set\4969 - Const.dwg

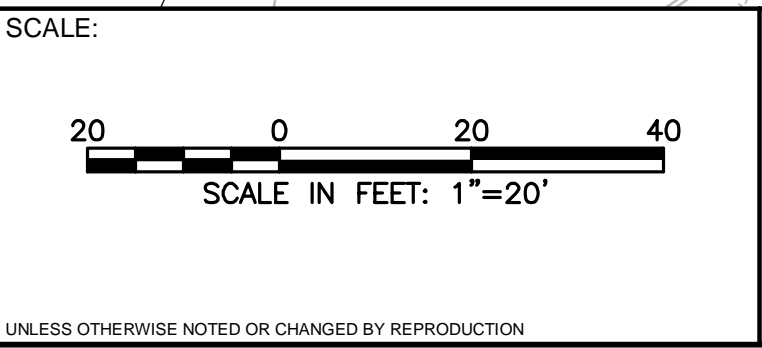
NUMBER	DATE	MADE BY	CHECKED BY	DESCRIPTION

DRAWN BY: TAD
DESIGNED BY: JCC
CHECKED BY: KYH

PROGRESS PLANS

BETA Group, Inc.
Engineers • Planners • Landscape Architects
Lincoln, RI - Norwood, MA - Hartford, CT

315 Norwood Park South
Norwood, MA 02062
781.255.1982
email: BETA@BETA-inc.com

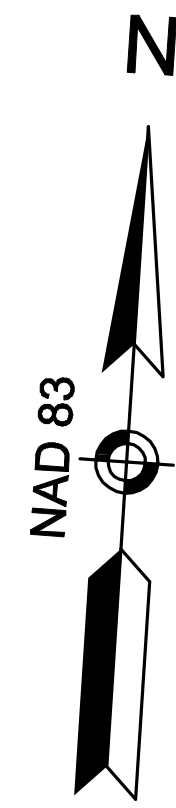


**C/E/F NEIGHBORHOOD TRAFFIC CALMING
CONSTRUCTION PLAN
LOCATION 17**

WESTWOOD, MASSACHUSETTS

ISSUE DATE: APRIL 2015

SHEET: **15 of xx**



MAP 31 LOT 38
NOW OR FORMERLY
LIN, SUSAN
227 FORBES RD
BK 8737 PG 83

TOWN OF WESTWOOD
TOWN OF NORWOOD

PROJECT END
STA 1+15.73
N2901361.3547
E744626.9126

END GRAN. CURB
TYPE VB (+99.77)
PROP. LANDSCAPED
MEDIAN ISLAND (8' X 30')
PROP. GRAN.
EDGING TYPE SB

END GRAN. EDGING
TYPE SB (+99.23)
PROP. GRAN.
CURB TYPE VB
PROP. BOX WIDENING
PROP. STAMPED
CONCRETE TRUCK APRON
PROP. GRAN.
EDGING TYPE SB

BEGIN GRAN. EDGING
TYPE SB (+55.16)
BEGIN GRAN. CURB
TYPE VB (+28.20)

EVERETT STREET

COUNTY LAYOUT LINE

0+00

PAVEMENT MILLING
AND RESURFACING

COUNTY LAYOUT LINE

PROJECT BEGIN
STA 0+28.20
N2901263.2432
E744545.1076

BEGIN GRAN. CURB
TYPE VB (+99.06)
PROP. TEXTURED PAVEMENT

PROP. BOX WIDENING
PROP. LANDSCAPED
MEDIAN ISLAND (8' X 22')

PROP. GRAN.
EDGING TYPE SB

END GRAN. CURB
TYPE VB (+40.15)

COUNTY LAYOUT LINE

0+00

PAVEMENT MILLING
AND RESURFACING

BEGIN GRAN. CURB
TYPE VB (+31.56)

PROP. TEXTURED PAVEMENT

BEGIN GRAN. EDGING
TYPE SB (+32.20)

TRIM TREES AS REQ.
PROP. GRAN.
CURB TYPE VB
PROP. BOX WIDENING
PROP. STAMPED
CONCRETE TRUCK APRON
PROP. GRAN.
EDGING TYPE SB

END GRAN. EDGING
TYPE SB (+81.99)

PROP. BOX WIDENING
R&R MB

END GRAN. CURB
TYPE VB (+52.90)

PROJECT END
STA 2+52.98
N2901276.6812
E744769.4841

STONE
RETAINING
WALL
22' PINE
BIT CURB
18" OAK

STONE
RETAINING
WALL

COUNTY LAYOUT LINE

30" OAK
18" OAK
BIT CURB

PI +23.93

MAP 31 LOT 032
NOW OR FORMERLY
BEN W. & CONNIE LIU
435 EVERETT ST
BK 22835 PG 274

435

TOWN OF WESTWOOD
TOWN OF NORWOOD

C:\4900s\4969 - Westwood - CEF Traffic Calming\Drawing Files\Plan Set\4969 - Const.dwg

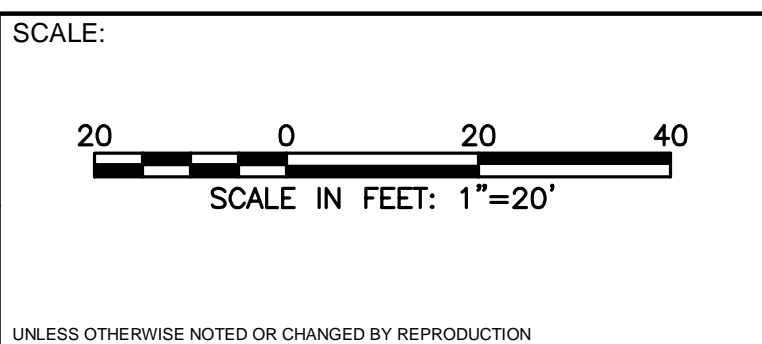
NUMBER	DATE	MADE BY	CHECKED BY	DESCRIPTION

DRAWN BY:	TAD
DESIGNED BY:	JCC
CHECKED BY:	KYH

PROGRESS PLANS

BETA Group, Inc.
Engineers • Planners • Landscape Architects
Lincoln, RI - Norwood, MA - Hartford, CT

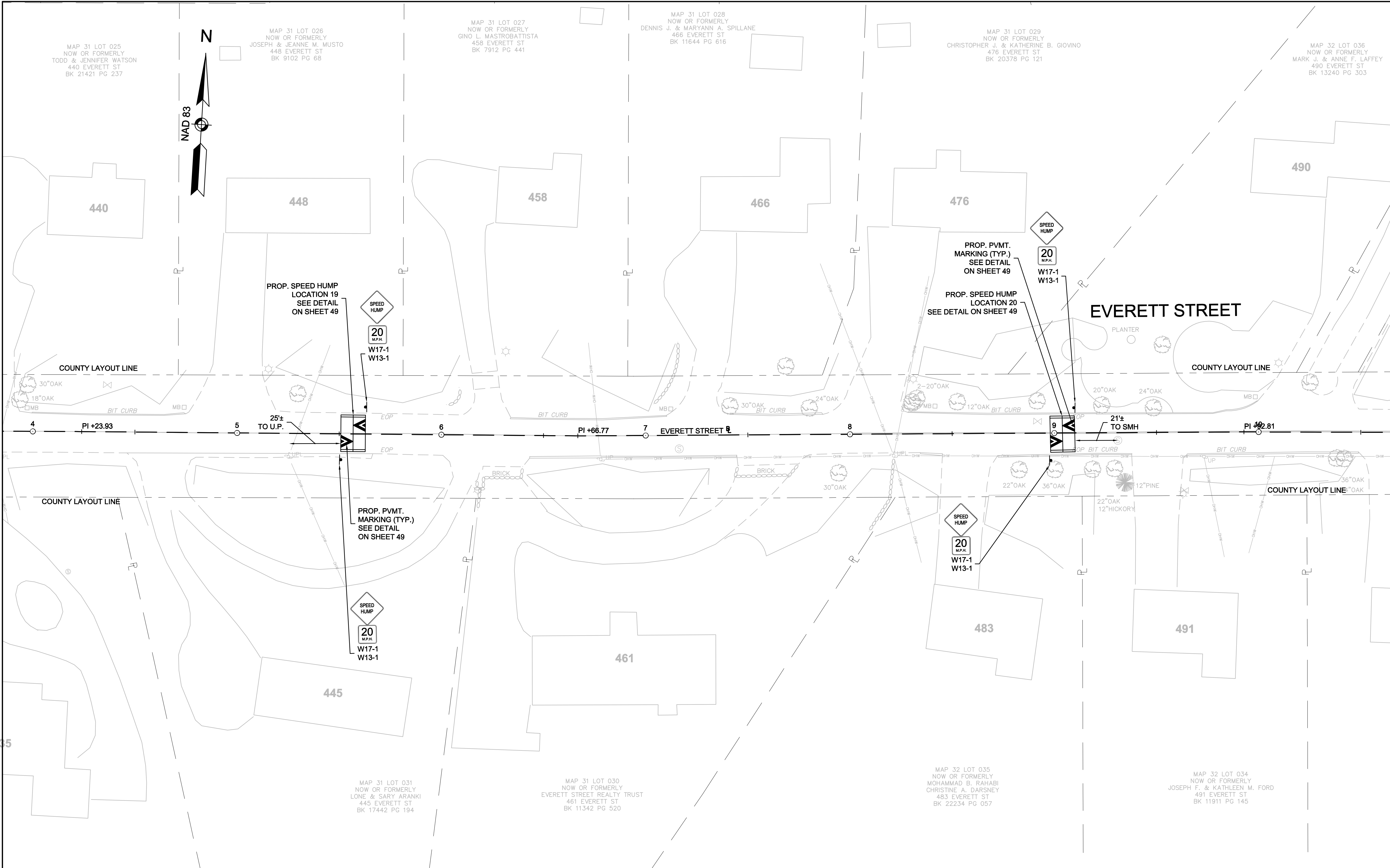
315 Norwood Park South
Norwood, MA 02062
781.255.1982
email: BETA@BETA-inc.com



**C/E/F NEIGHBORHOOD TRAFFIC CALMING
CONSTRUCTION PLAN
LOCATION 18 & LOCATION 23**
WESTWOOD, MASSACHUSETTS

ISSUE DATE:	APRIL 2015
SHEET	16 of xx

C:\4900s\4969 - Westwood - CEF Traffic Calming\Drawing Files\Plan Set\4969 - Const.dwg

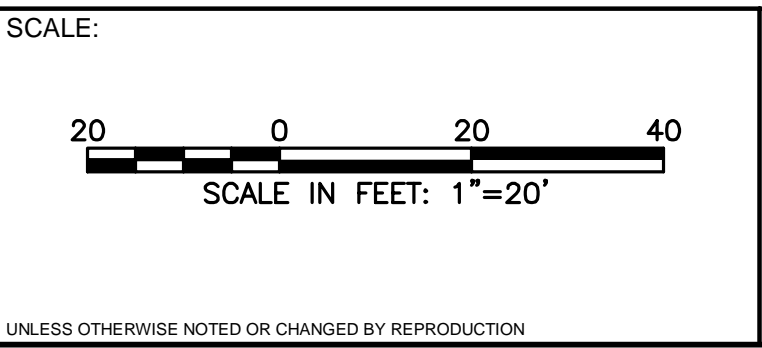


NUMBER	DATE	MADE BY	CHECKED BY	DESCRIPTION
REVISIONS				

DRAWN BY: TAD
 DESIGNED BY: JCC
 CHECKED BY: KYH

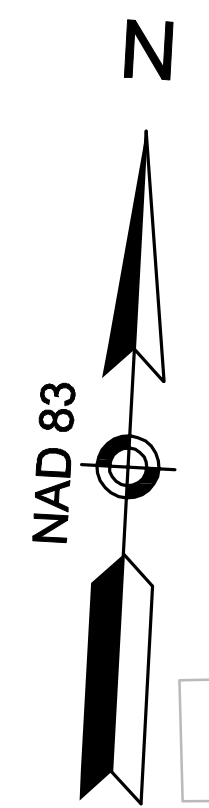
PROGRESS PLANS

BETA Group, Inc.
 Engineers • Planners • Landscape Architects
 Lincoln, RI - Norwood, MA - Hartford, CT
 315 Norwood Park South
 Norwood, MA 02062
 781.255.1982
 email: BETA@BETA-inc.com



**C/E/F NEIGHBORHOOD TRAFFIC CALMING
 CONSTRUCTION PLAN
 LOCATION 19 & LOCATION 20**
 WESTWOOD, MASSACHUSETTS

ISSUE DATE: APRIL 2015
 SHEET: 17 of xx



MAP 32 LOT 039
NOW OR FORMERLY
RICHARD T. & DOROTHY M.
MULLIGAN
508 EVERETT ST
BK 5790 PG 552

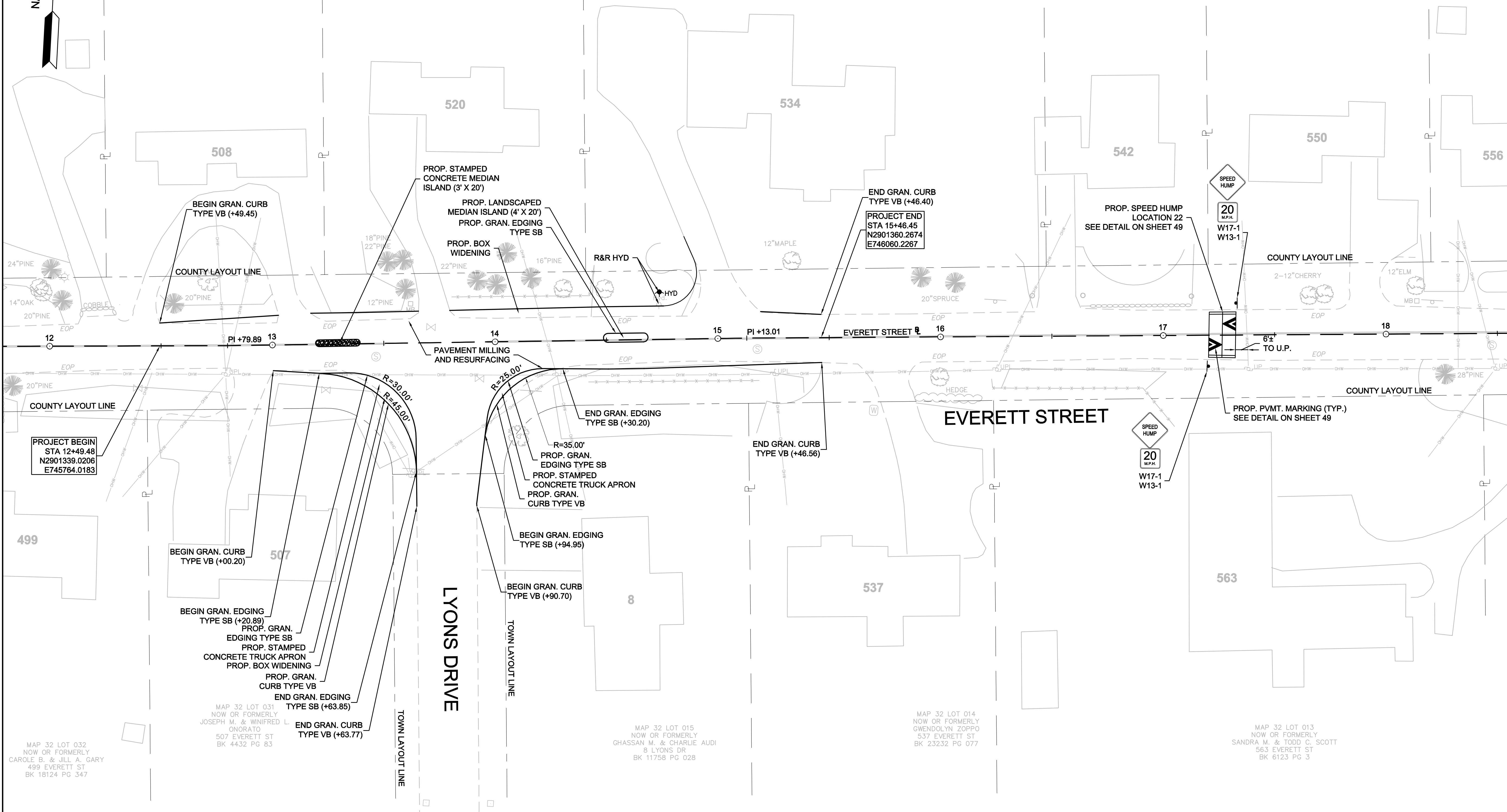
MAP 32 LOT 040
NOW OR FORMERLY
WILLIAM D. STOREY
VIRGINIA M. RYAN
520 EVERETT ST
BK 10648 PG 334

MAP 32 LOT 041
NOW OR FORMERLY
CHRISTOPHER A. & DEBORA PFAFF
534 EVERETT ST
BK 11346 PG 342

MAP 32 LOT 042
NOW OR FORMERLY
CHARLES C. &
NANCY G. ELIOT
542 EVERETT ST
BK 20072 PG 24

MAP 32 LOT 043
NOW OR FORMERLY
JOHN H. & MAYANNE LYNCH
550 EVERETT ST
BK 4384 PG 717

MAP 32
LOT 044
NOW OR FORMERLY
PAUL B. & DEBORA L.
HADDAD
556 EVERETT ST
BK 11826
PG 664



PROJECT BEGIN
STA 12+49.48
N2901339.0206
E745764.0183

PROJECT END
STA 15+46.45
N2901360.2674
E746060.2267

BEGIN GRAN. CURB
TYPE VB (+00.20)

BEGIN GRAN. EDGING
TYPE SB (+20.89)
PROJ. GRAN.
EDGING TYPE SB
PROJ. STAMPED
CONCRETE TRUCK APRON
PROJ. BOX WIDENING
PROJ. GRAN.
CURB TYPE VB
END GRAN. EDGING
TYPE SB (+63.85)

MAP 32 LOT 031
NOW OR FORMERLY
JOSEPH M. & WINIFRED L.
ONORATO
507 EVERETT ST
BK 4432 PG 83

END GRAN. CURB
TYPE VB (+63.77)

LYONS DRIVE

BEGIN GRAN. CURB
TYPE VB (+90.70)

BEGIN GRAN. EDGING
TYPE SB (+94.95)

BEGIN GRAN. EDGING
TYPE SB (+94.95)

END GRAN. EDGING
TYPE SB (+30.20)

END GRAN. CURB
TYPE VB (+46.56)

MAP 32 LOT 015
NOW OR FORMERLY
GHASSAN M. & CHARLIE AUDI
8 LYONS DR
BK 11758 PG 028

MAP 32 LOT 014
NOW OR FORMERLY
GWENDOLYN ZOPPO
537 EVERETT ST
BK 23232 PG 077

MAP 32 LOT 013
NOW OR FORMERLY
SANDRA M. & TODD C. SCOTT
563 EVERETT ST
BK 6123 PG 3

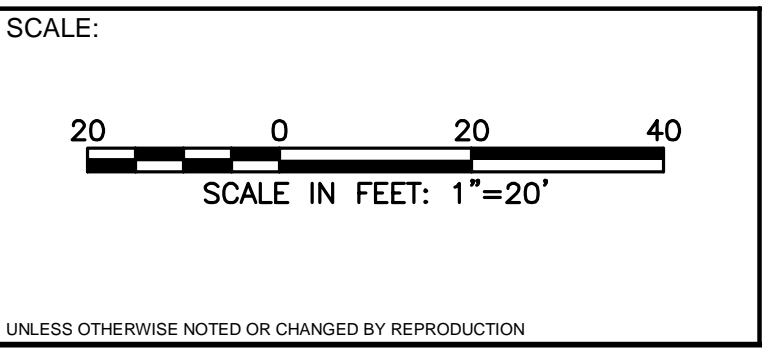
NUMBER	DATE	MADE BY	CHECKED BY	DESCRIPTION

DRAWN BY: TAD
DESIGNED BY: JCC
CHECKED BY: KYH

PROGRESS PLANS

BETA Group, Inc.
Engineers • Planners • Landscape Architects
Lincoln, RI - Norwood, MA - Hartford, CT

315 Norwood Park South
Norwood, MA 02062
781.255.1982
email: BETA@BETA-inc.com



**C/E/F NEIGHBORHOOD TRAFFIC CALMING
CONSTRUCTION PLAN
LOCATION 21 & LOCATION 22**

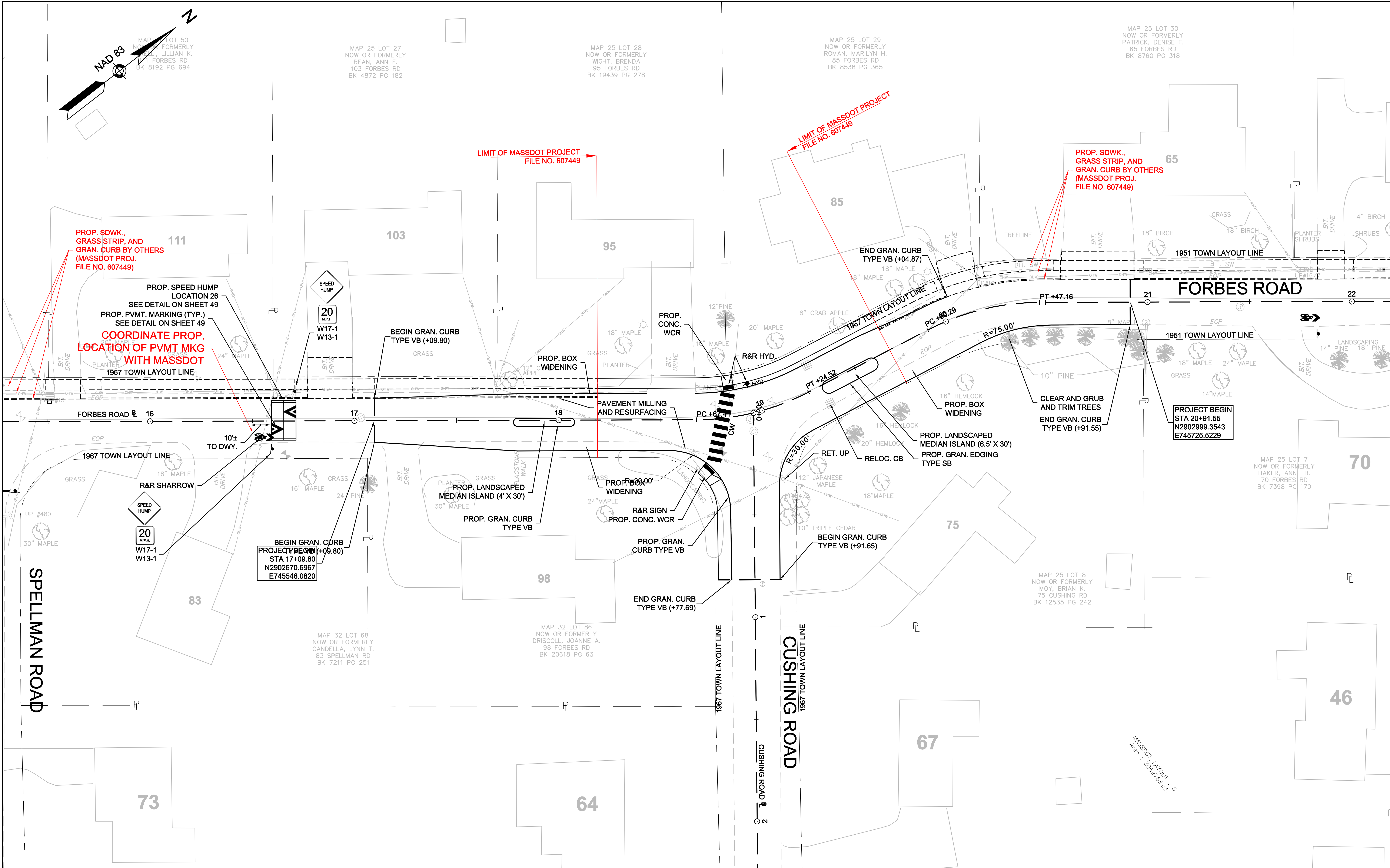
WESTWOOD, MASSACHUSETTS

ISSUE DATE: APRIL 2015

SHEET: **18 of xx**

C:\4900s\4969 - Westwood - CEF Traffic Calming\Drawing Files\Plan Set\4969 - Const.dwg

C:\4900s\4969 - Westwood - CEF Traffic Calming\Drawing\Files\Plan Set\4969 - Const.dwg



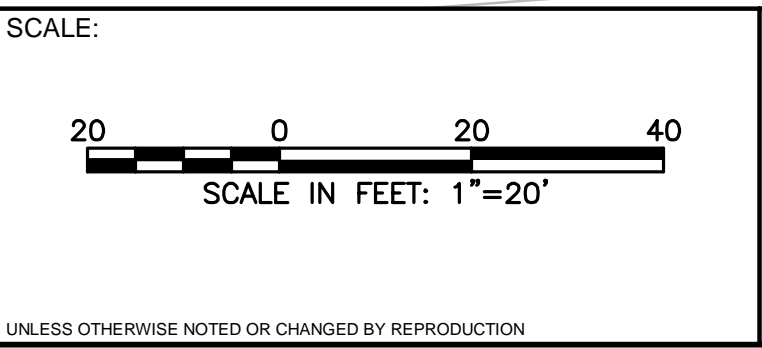
NUMBER	DATE	MADE BY	CHECKED BY	DESCRIPTION

DRAWN BY: TAD
 DESIGNED BY: JCC
 CHECKED BY: KYH

PROGRESS PLANS

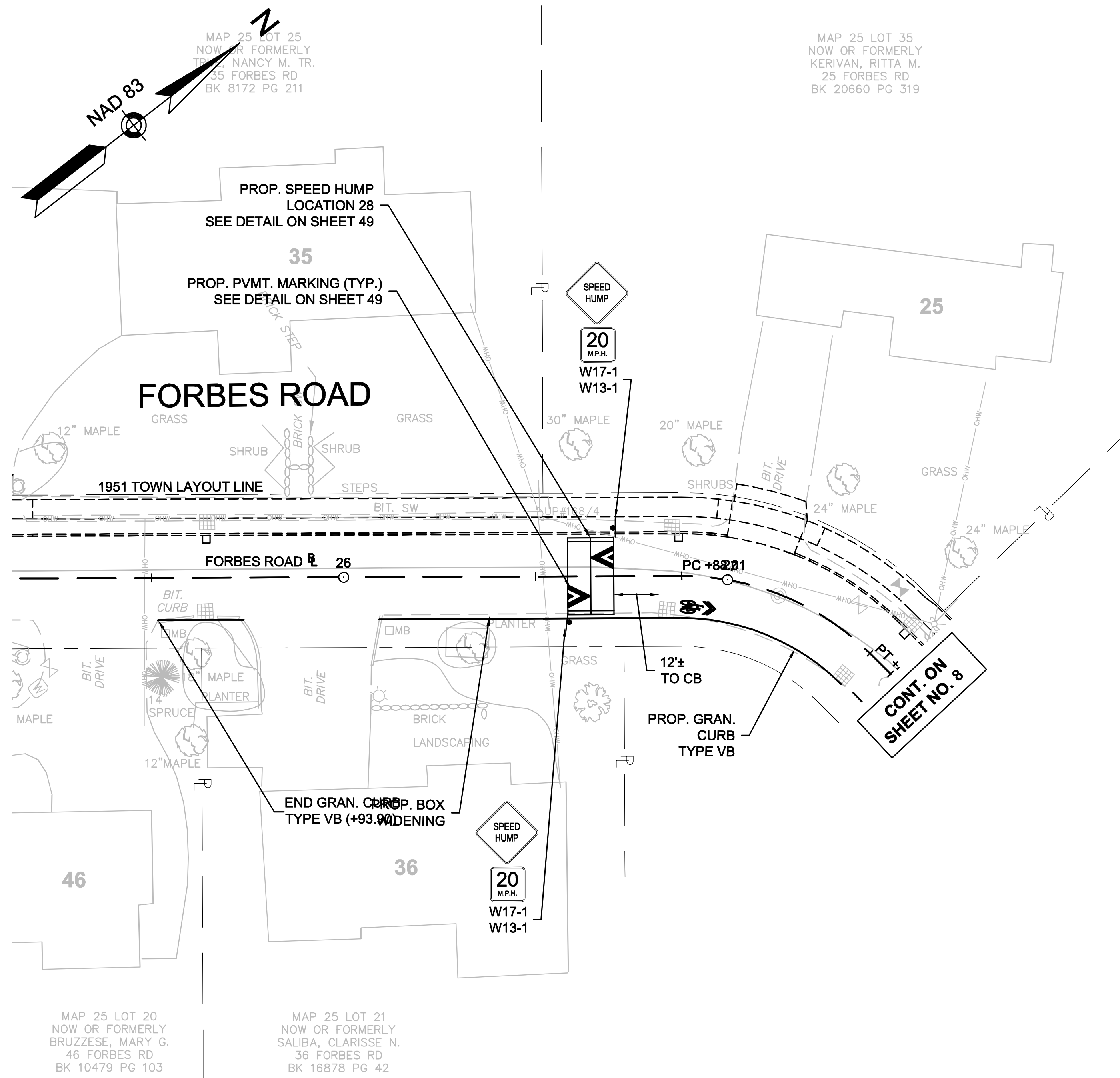
BETA Group, Inc.
 Engineers • Planners • Landscape Architects
 Lincoln, RI - Norwood, MA - Hartford, CT

315 Norwood Park South
 Norwood, MA 02062
 781.255.1982
 email: BETA@BETA-inc.com

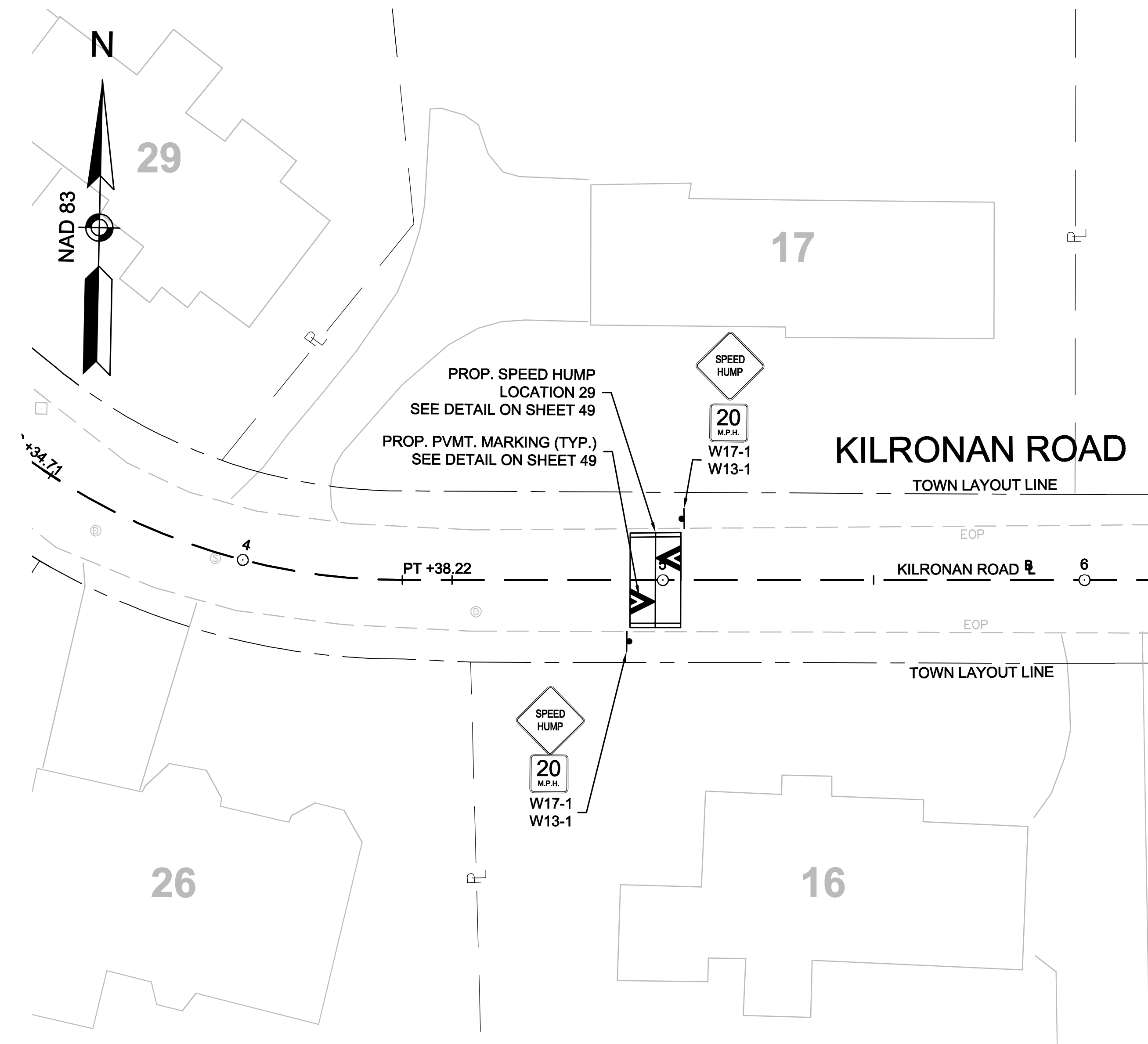


**C/E/F NEIGHBORHOOD TRAFFIC CALMING
 CONSTRUCTION PLAN
 LOCATION 26 & LOCATION 27**
 WESTWOOD, MASSACHUSETTS

ISSUE DATE: APRIL 2015
 SHEET: **20 of xx**



FORBES ROAD - LOCATION 28



KILRONAN ROAD - LOCATION 29

C:\4900s\4969 - Westwood - CEF Traffic Calming\Drawing Files\Plan Set\4969 - Const.dwg

NUMBER	DATE	MADE BY	CHECKED BY	DESCRIPTION
REVISIONS				

DRAWN BY:	TAD
DESIGNED BY:	JCC
CHECKED BY:	KYH

PROGRESS PLANS

BETA Group, Inc.
 Engineers • Planners • Landscape Architects
 Lincoln, RI - Norwood, MA - Hartford, CT

315 Norwood Park South
 Norwood, MA 02062
 781.255.1982
 email: BETA@BETA-inc.com

SCALE:

 SCALE IN FEET: 1"=20'

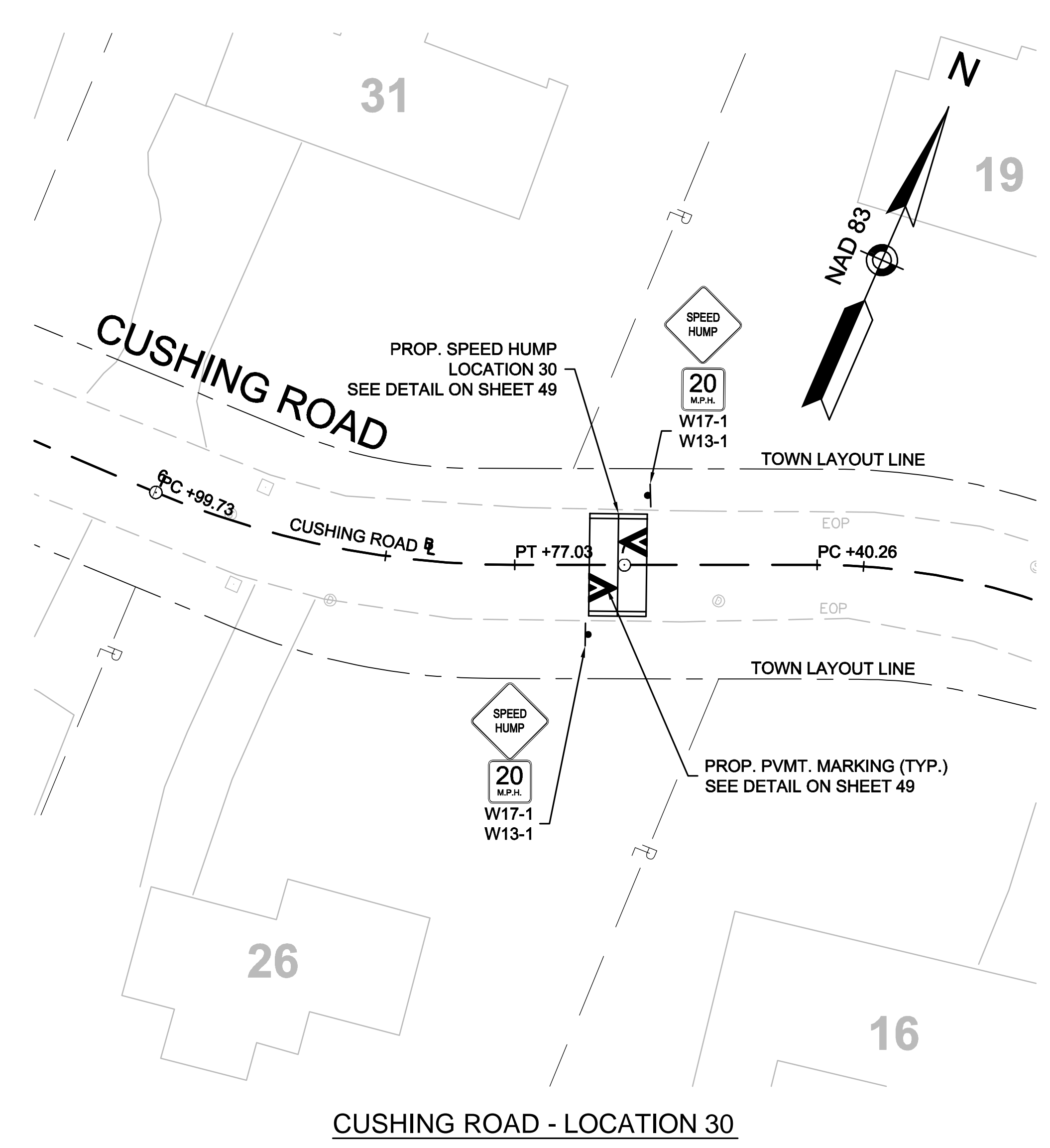
UNLESS OTHERWISE NOTED OR CHANGED BY REPRODUCTION

**C/E/F NEIGHBORHOOD TRAFFIC CALMING
 CONSTRUCTION PLAN
 LOCATION 28 & LOCATION 29**

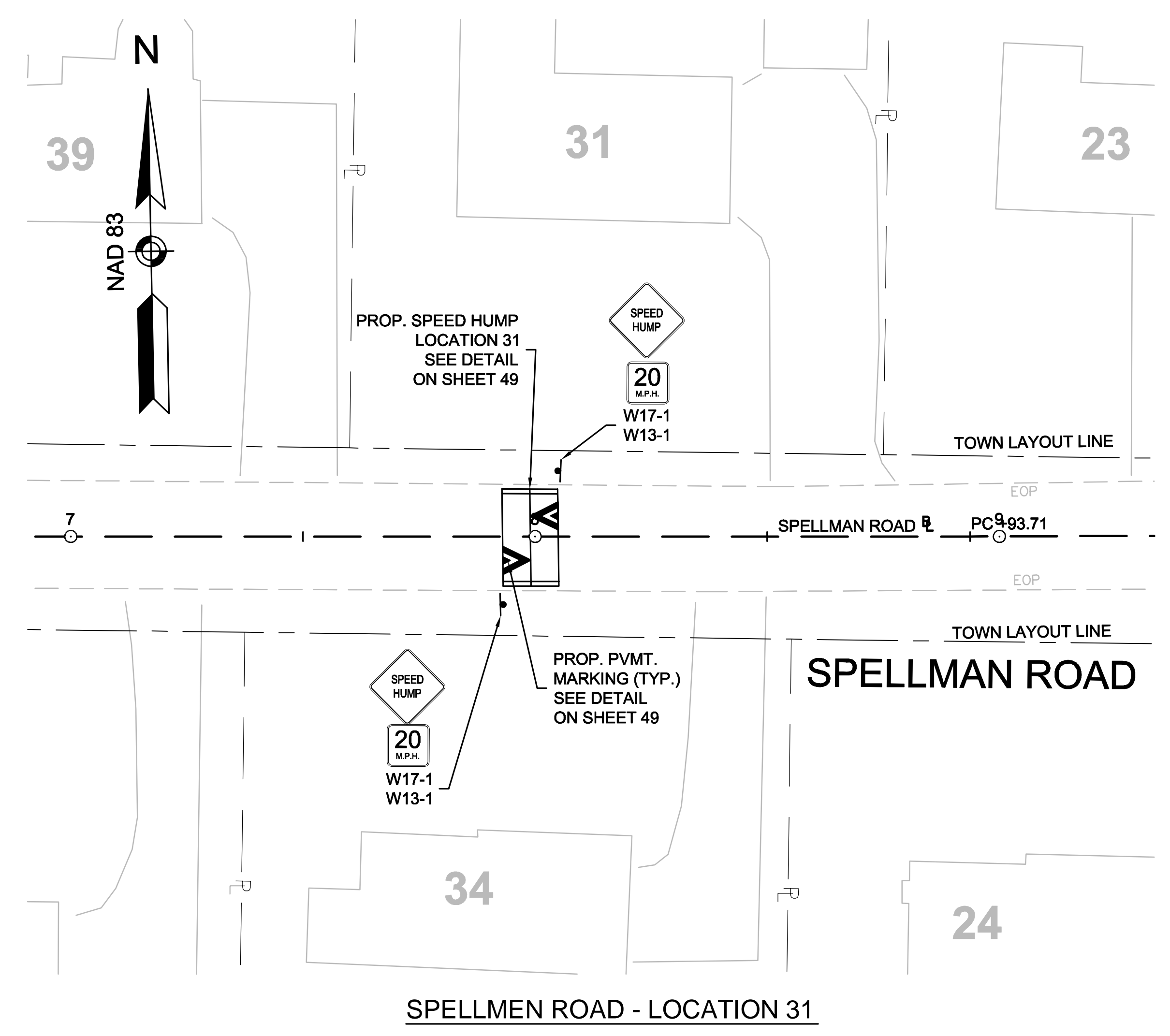
WESTWOOD, MASSACHUSETTS

ISSUE DATE:	APRIL 2015
SHEET	21 of xx

C:\4900s\4969 - Westwood - CEF Traffic Calming\Drawing Files\Plan Set\4969 - Const.dwg



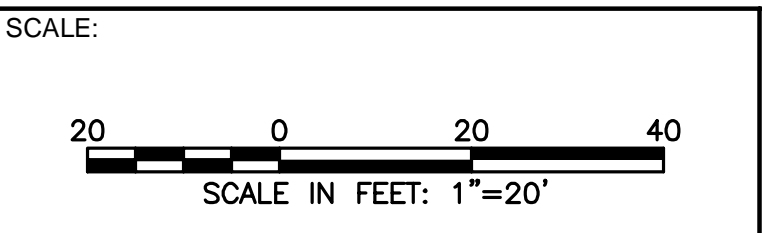
CUSHING ROAD - LOCATION 30



SPELLMAN ROAD - LOCATION 31

PROGRESS PLANS

BETA Group, Inc.
 Engineers • Planners • Landscape Architects
 Lincoln, RI - Norwood, MA - Hartford, CT
 315 Norwood Park South
 Norwood, MA 02062
 781.255.1982
 email: BETA@BETA-inc.com



**C/E/F NEIGHBORHOOD TRAFFIC CALMING
 CONSTRUCTION PLAN
 LOCATION 30 & LOCATION 31
 WESTWOOD, MASSACHUSETTS**

ISSUE DATE: APRIL 2015
 SHEET: 22 of xx

NUMBER	DATE	MADE BY	CHECKED BY	DESCRIPTION
REVISIONS				

DRAWN BY: TAD
 DESIGNED BY: JCC
 CHECKED BY: KYH