



Town of Westwood

Traffic Calming Program Canton, Everett, Forbes Public Information Meeting

December 8, 2014





Project Goals



1. Reduce Travel Speeds
2. Keep Cut-Through Traffic on the Highway



History



- 1/2008 Public Meeting
- 4/17/2008 Public Meeting
- 5/29/2008 Public Meeting
- 7/1/2008 Public Meeting
- 9/9/2008 Public Meeting
- 9/16/2008 BOS Presentation
- 9/25/2008 Public Meeting
- 10/6/2008 BOS Presentation
- 10/20/2008 BOS Presentation
- 11/3/2008 BOS Presentation
- 9/30/2009 NCC Presentation
- 11/18/2009 NCC Presentation
- 4/29/2010 Public Meeting
- 2/7/2013 Public Meeting
- 2/28/2013 Public Meeting
- 3/12/2013 Public Meeting
- 2/10/2014 NCC Presentation
- 6/23/2014 Public Meeting
- 7/21/2014 BOS Presentation
- 10/14/2014 BOS Presentation
- Early November 2014
 - Temporary Installation (Field Trial)
- Mid-November 2014
 - Data Collection
 - Comment Compiling
- December 2014
 - Device Removal
 - Public Input



3-2-1 Plan



LEGEND





Plan Measures



- Realigned Intersections
- Dynamic Feedback Signs
- Speed Reduction Markings
- Slow Point Islands



Field Test



LEGEND



REALIGNMENT



SLOW POINT ISLAND



SPEED REDUCTION MARKINGS



FEEDBACK SPEED SIGN



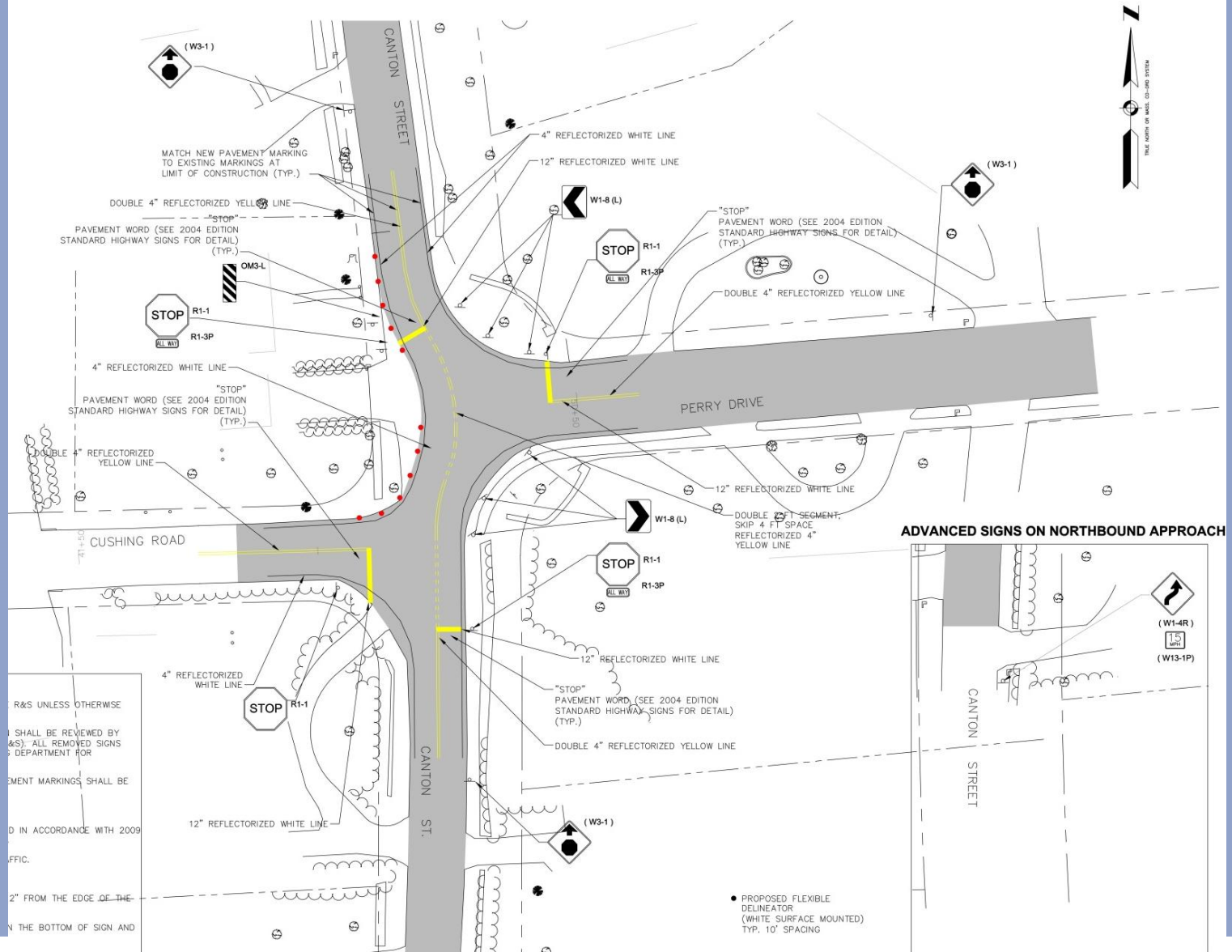
Field Trial



- 2 Realigned Intersections on Canton St
- 1 Realigned Intersection on Forbes Rd
- 4 Dynamic Feedback Signs
 - 3 on Canton St
 - 1 on Forbes Rd
- Speed Reduction Markings (2 Locations)
- Slow Point Islands (4 Locations)

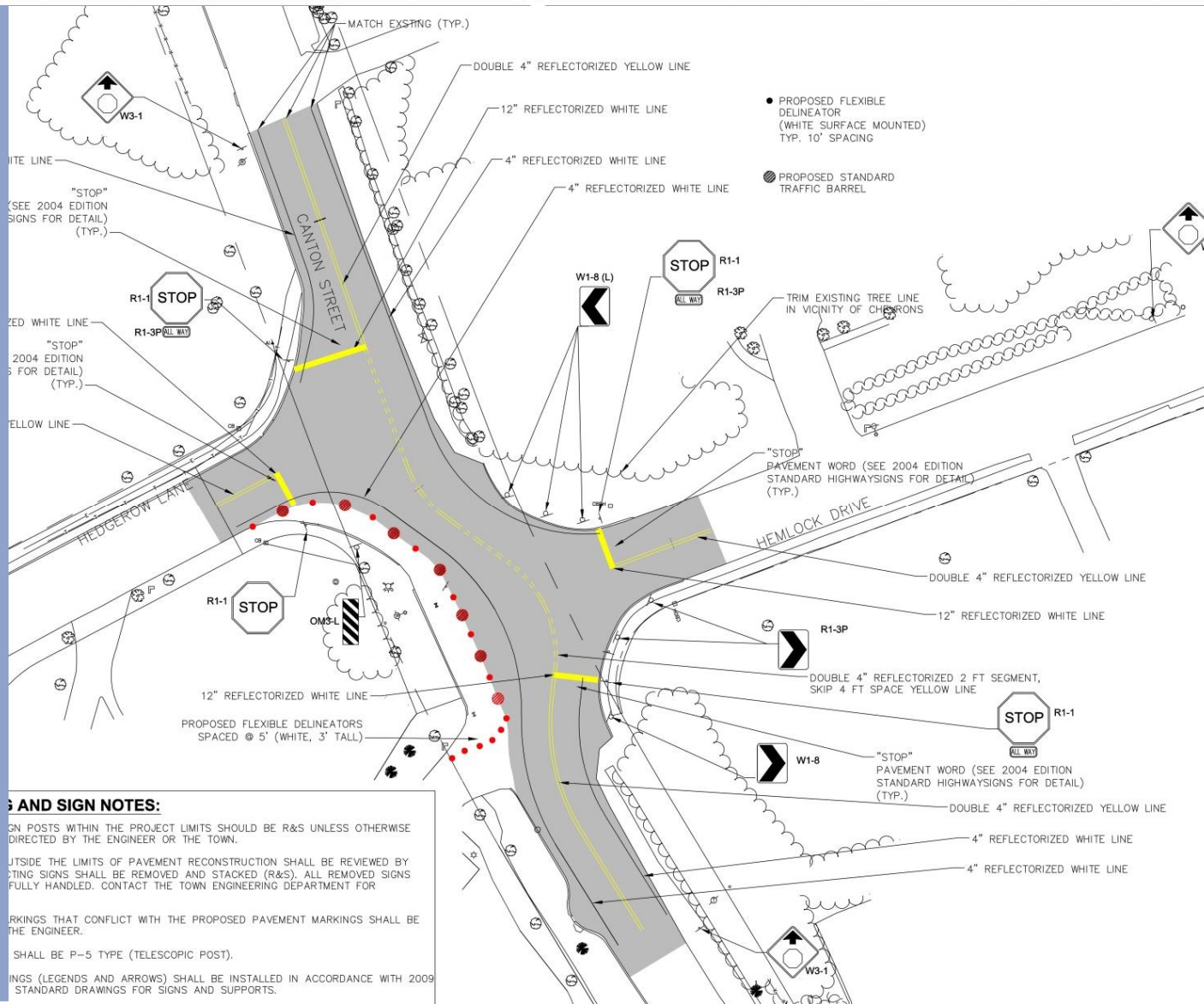


Canton Street At Perry Drive And Cushing Road





Canton Street At Hemlock Drive And Hedgerow Lane



AND SIGN NOTES:

ON POSTS WITHIN THE PROJECT LIMITS SHOULD BE R&S UNLESS OTHERWISE DIRECTED BY THE ENGINEER OR THE TOWN.

OUTSIDE THE LIMITS OF PAVEMENT RECONSTRUCTION SHALL BE REVIEWED BY THE TOWN. EXISTING SIGNS SHALL BE REMOVED AND STACKED (R&S). ALL REMOVED SIGNS SHALL BE FULLY HANDLED. CONTACT THE TOWN ENGINEERING DEPARTMENT FOR DETAILS.

MARKINGS THAT CONFLICT WITH THE PROPOSED PAVEMENT MARKINGS SHALL BE REMOVED BY THE ENGINEER.

ALL SIGNS SHALL BE P-5 TYPE (TELESCOPIC POST).

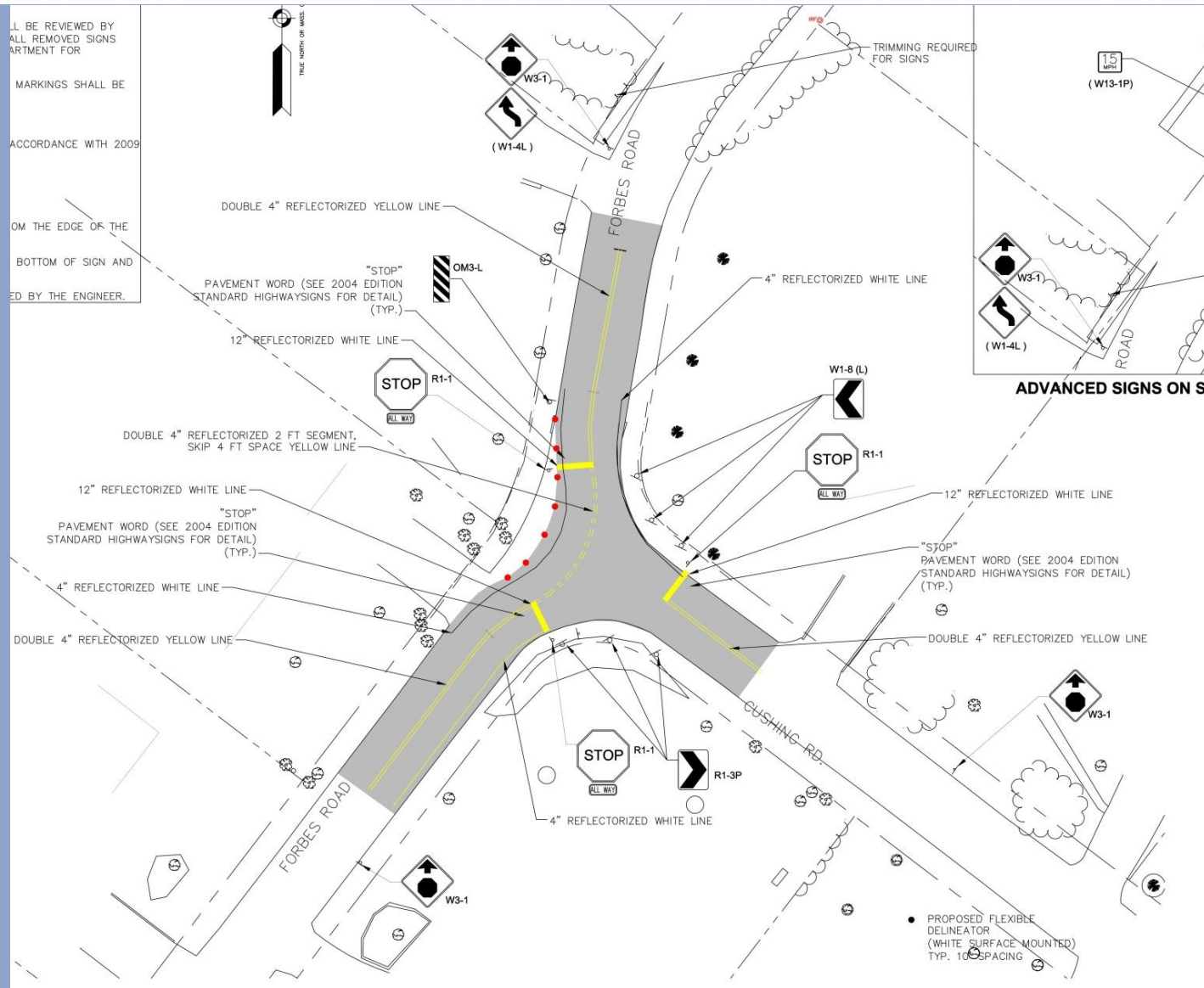
ALL SIGNS (LEGENDS AND ARROWS) SHALL BE INSTALLED IN ACCORDANCE WITH 2009 STANDARD DRAWINGS FOR SIGNS AND SUPPORTS.



Forbes Road At Cushing Road



ALL BE REVIEWED BY
ALL REMOVED SIGNS
ARTMENT FOR
MARKINGS SHALL BE
ACCORDANCE WITH 2009
OM THE EDGE OF THE
BOTTOM OF SIGN AND
ED BY THE ENGINEER.





Speed Reduction Markings

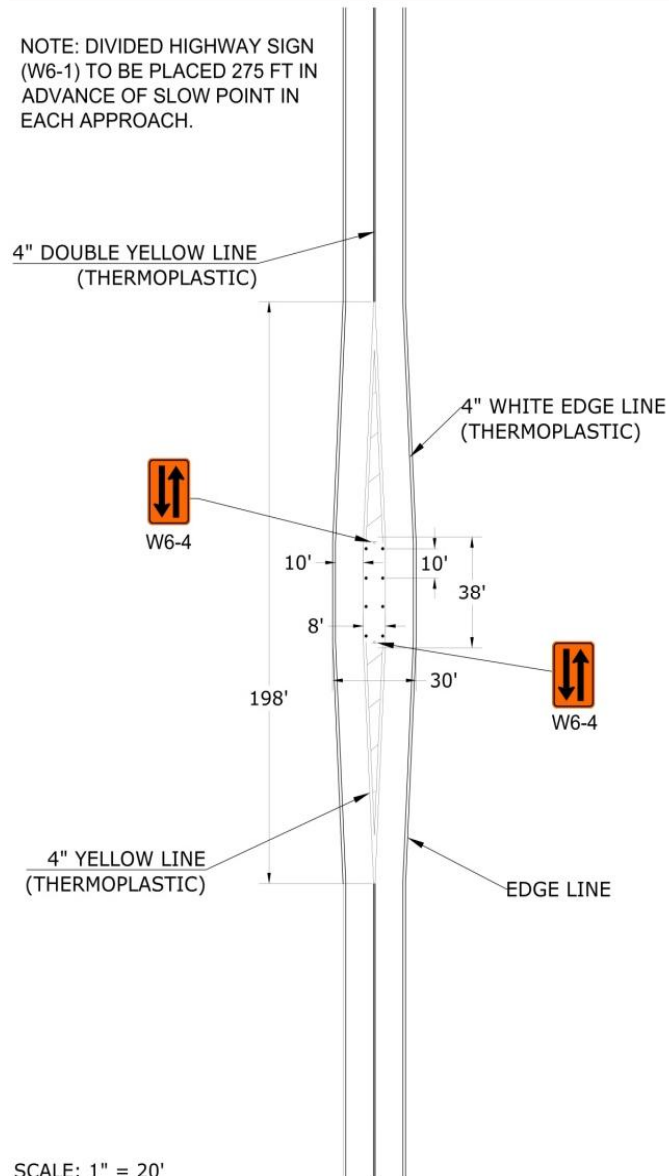


Between: Rotary and Metcalf
Metcalf and Blue Hill

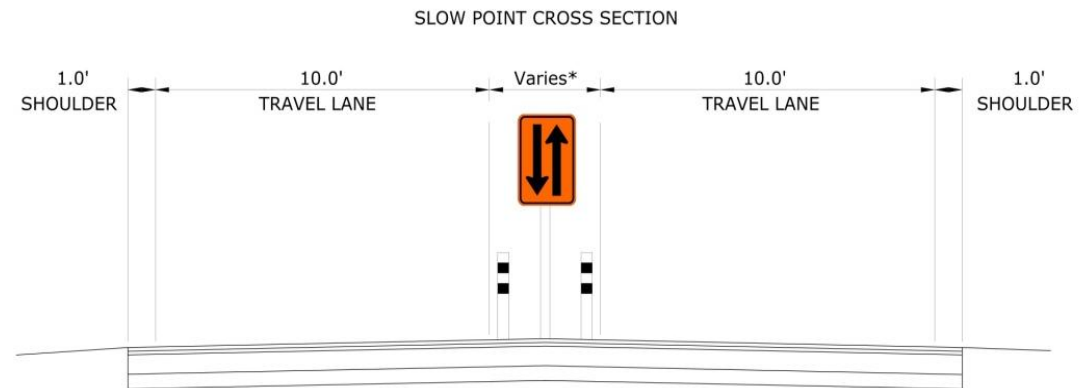


Temporary Slowpoints

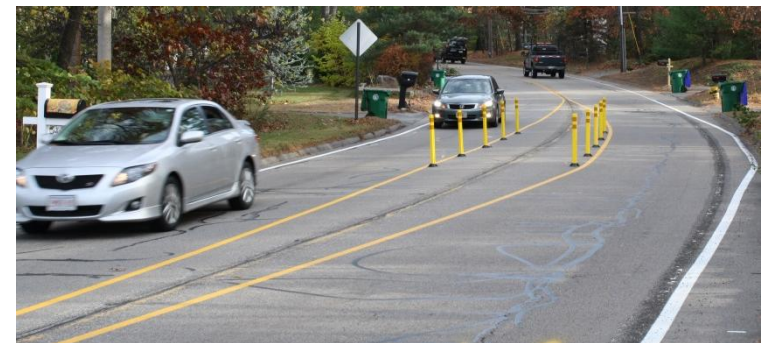
NOTE: DIVIDED HIGHWAY SIGN (W6-1) TO BE PLACED 275 FT IN ADVANCE OF SLOW POINT IN EACH APPROACH.



SCALE: 1" = 20'



SCALE: 1" = 2'





Slow Point 1





Slow Point 2





Slow Point 3





Slow Point 4





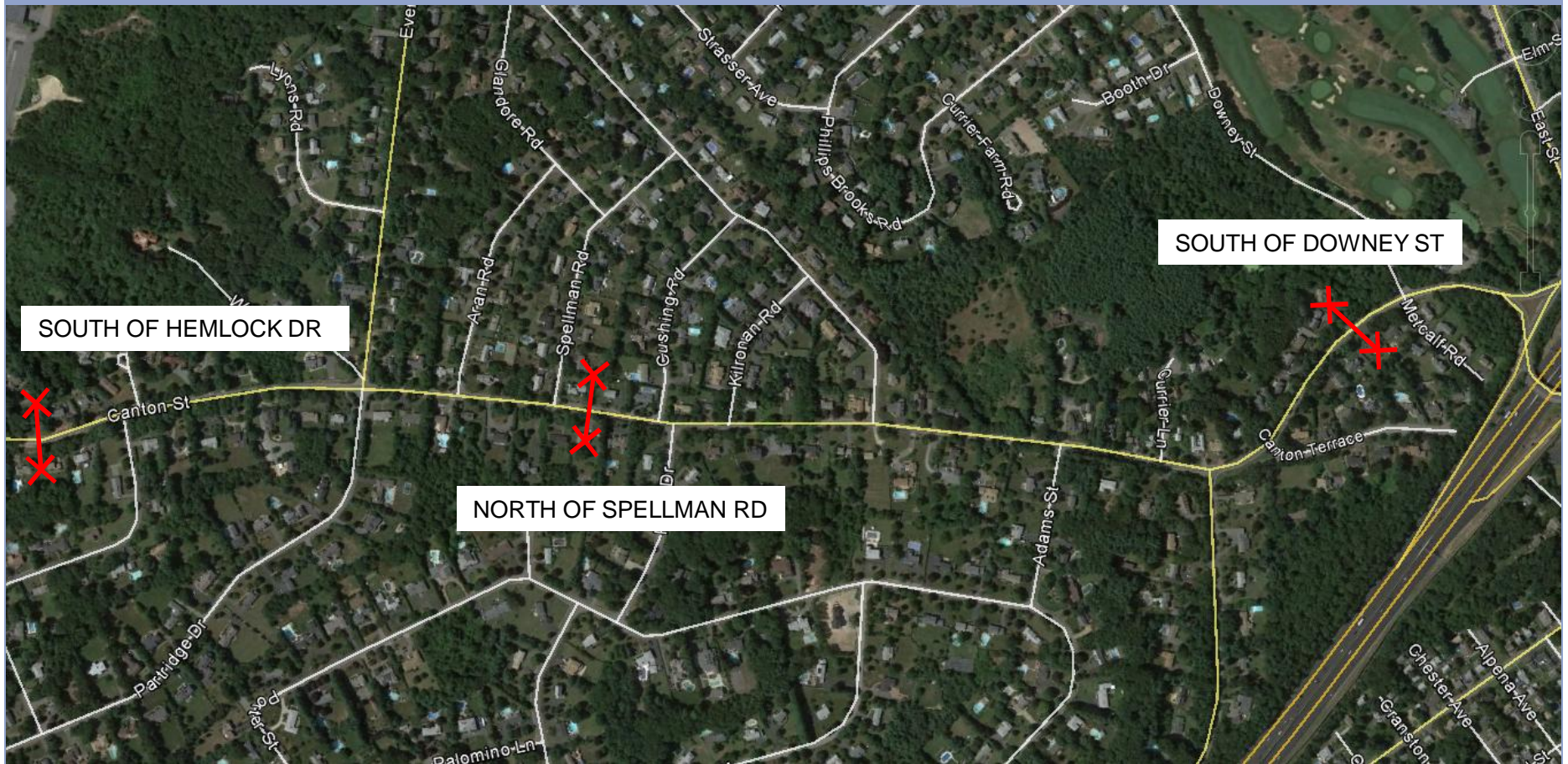
Data Collection



- Before and After
 - Traffic Volumes
 - Traffic Speeds
 - Vehicle Types
- Resident/User Feedback
 - 25 People Commented
 - 33 Comments
- Westwood P.D.
 - No Crashes

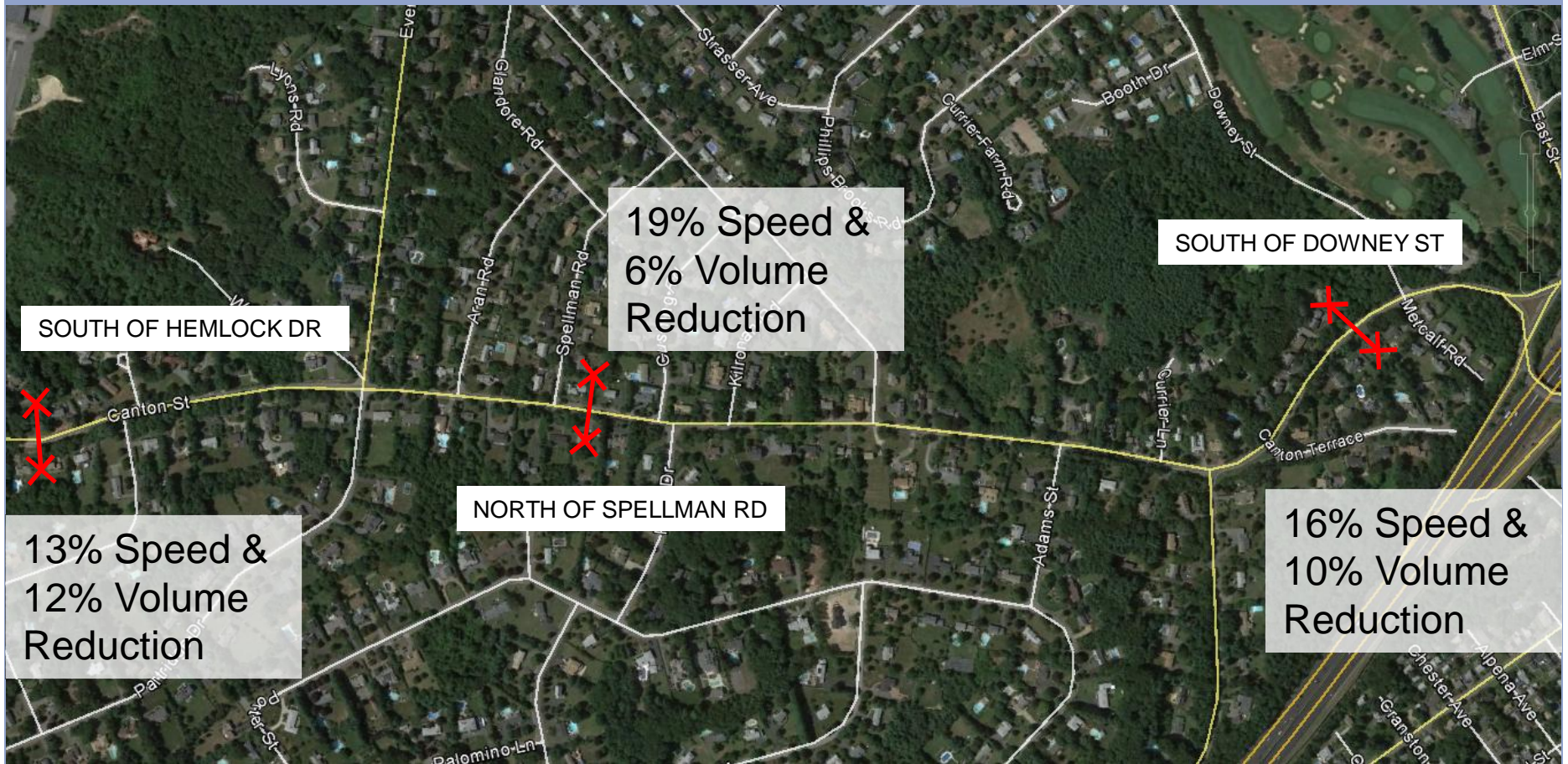


Data Collection Locations





Data Collection Summary



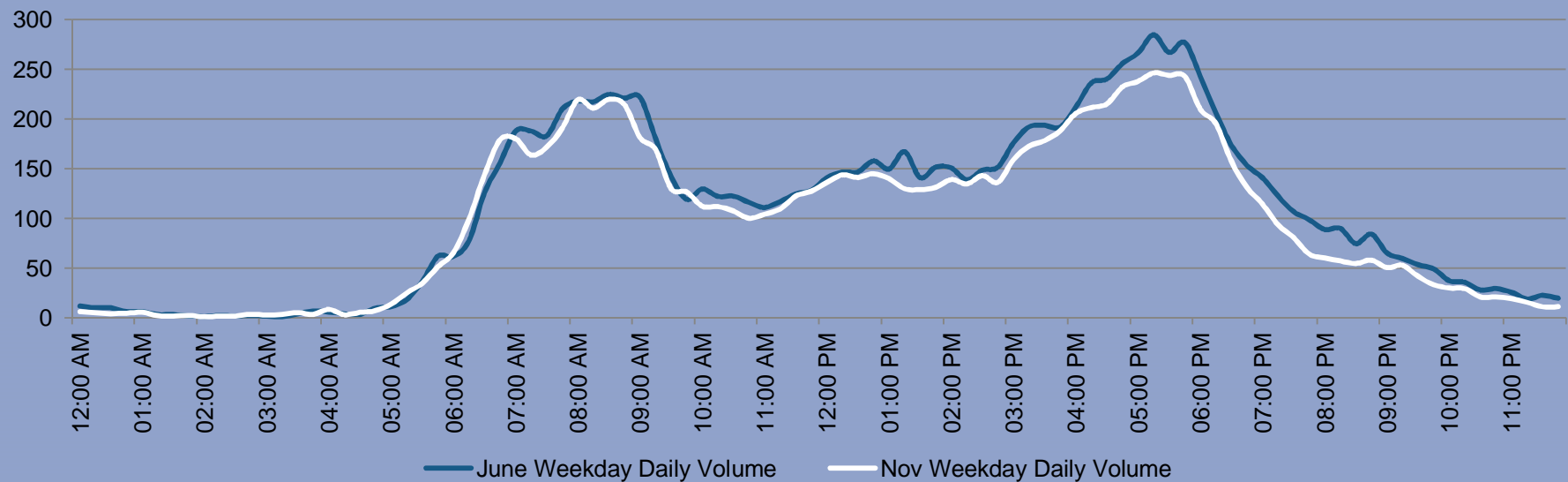
Summary = Total weekly, bi-directional speeds and volumes



Data Results



Volumes at Location 1: South of Downey St

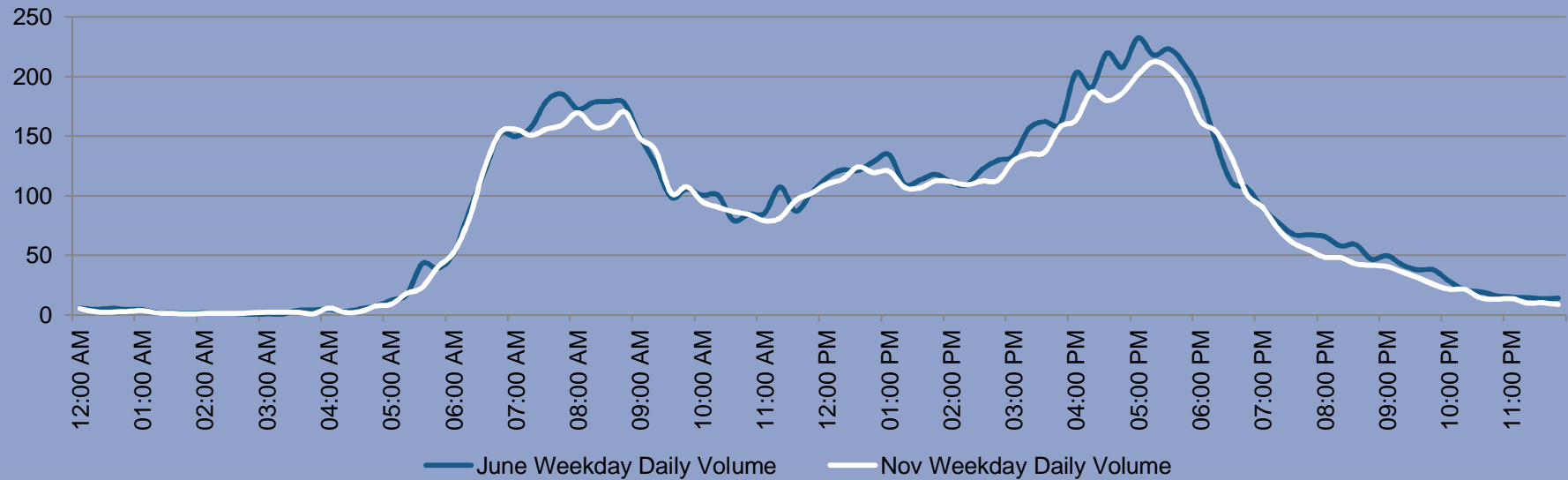




Data Results



Volumes at Location 2: North of Spellman Rd

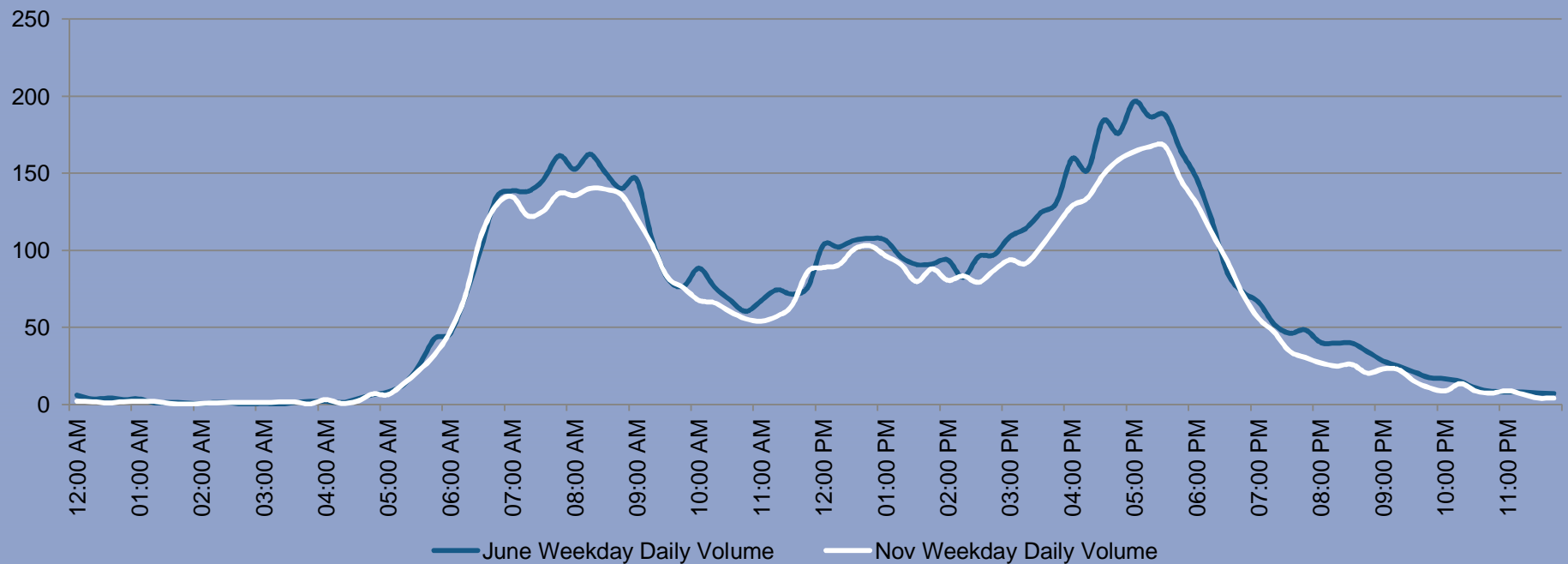




Data Results



Volumes at Location 3: South of Hemlock Drive

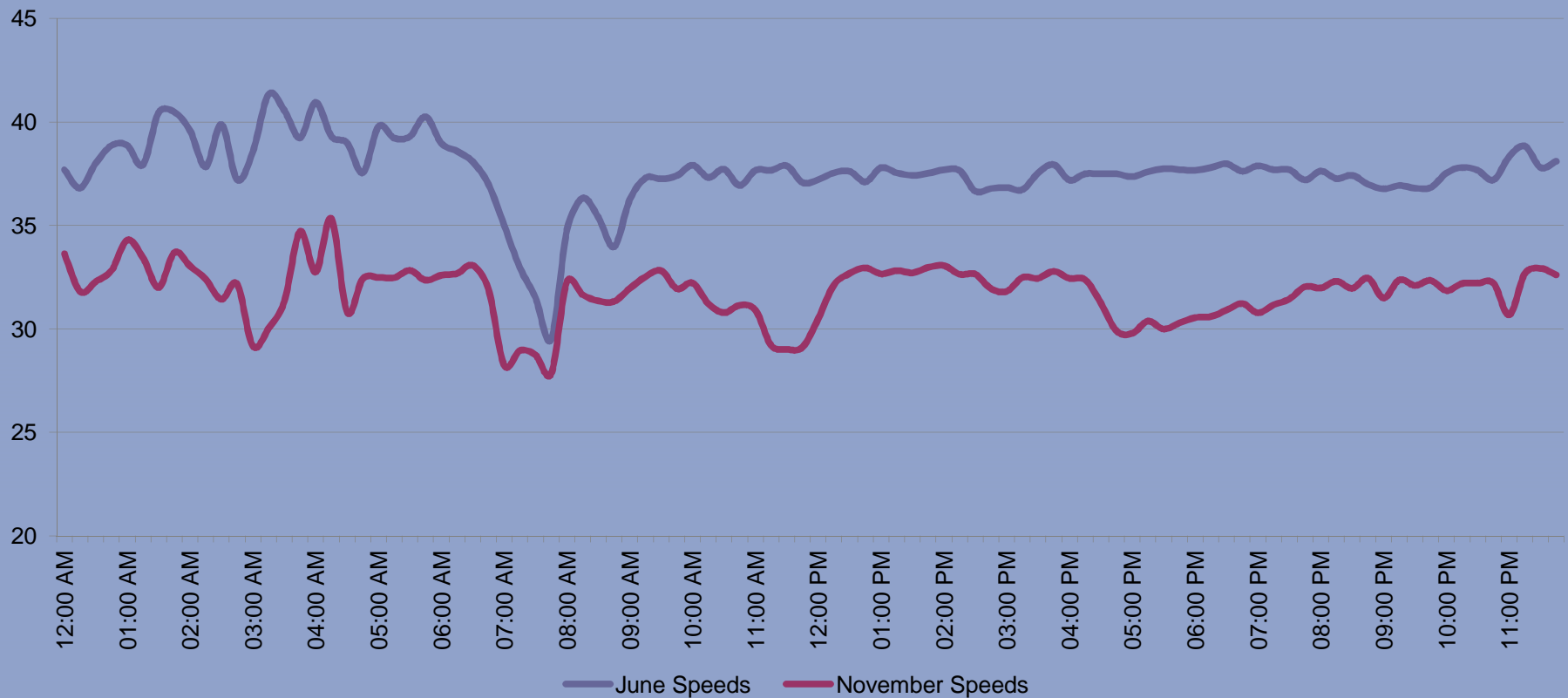




Data Results



Speeds at Location 1: South of Downey St

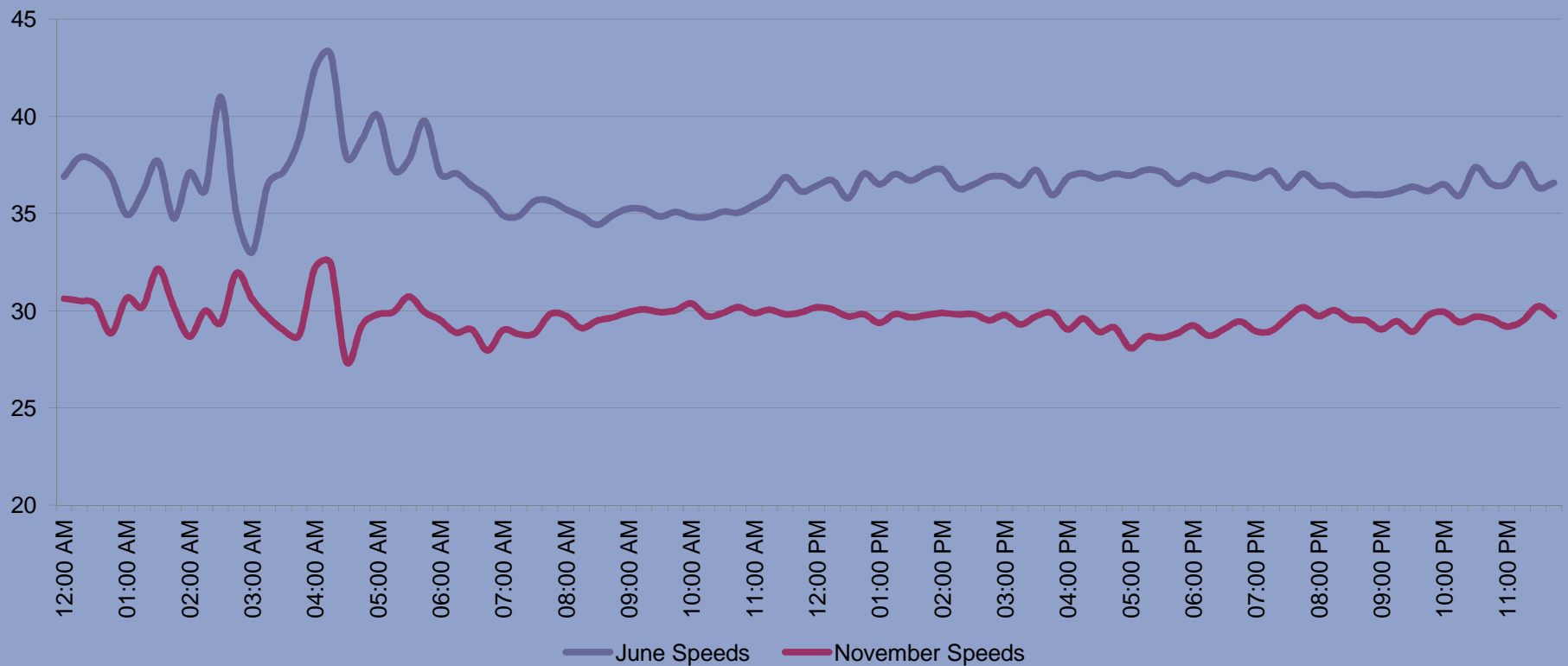




Data Results



Speeds at Location 2: North of Spellman Rd

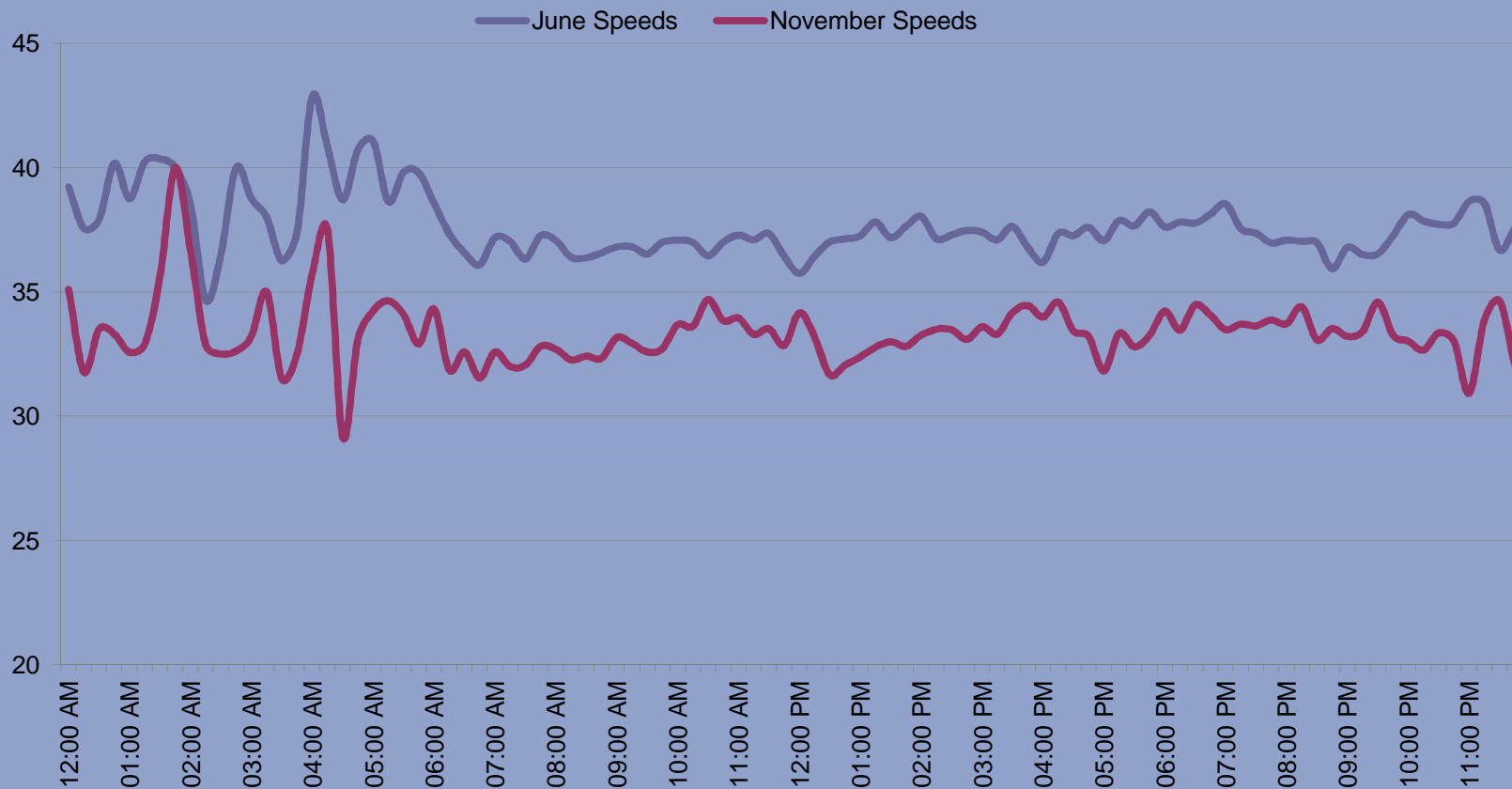




Data Results



Speeds at Location 3: South of Hemlock Drive





Public Comments



- Speeds still too high and aggressive
- Install speed humps – no enforcement required
- Excessive signs unattractive and decrease property values
- Just use Stop signs – no realignment
- Prohibit cars on Canton St by time of day
- Canton street left turns out of Metcalf



Public Comments



- Measures are helping most of Canton St and Forbes Rd
- Speeds increase north of Perry/Cushing
- Install Stop signs at Blue Hill
- Cut-through traffic not deterred
- Realigned intersections are awkward/dangerous
- Local residents are being punished



Public Comments



- Trial only included some intersections – should have Everett and Glandore too
- Provide more/larger signs to prohibit trucks
- Drivers speed in non-calmed areas to make up lost time
- Stop signs are not warranted



Public Comments



Speed Reduction Markings

- Effective in reducing speeds

Slow Points

- Effective
- Not effective
- Interference with driveways
- Narrow shoulders for pedestrians
- Add another south of Hemlock Drive



Public Comments



Canton St at Cushing/Perry
– Unacceptable



Public Comments



Canton St at Hemlock/Hedgerow

- Drivers do not stay in lane
- Place barrels closer to white edge line
- Drivers ignore Stop signs
- Stop signs are difficult to see
- Effective in reducing speeds



Public Comments



Forbes Rd at Cushing Rd

- Too much signage, especially chevrons
- Relocate Stop Ahead signs
- Drivers already slow down at this location
- Drivers speed up along the rest of Forbes to make up lost time



Public Comments



Dynamic Feedback Sign on Forbes Rd

- Flashing light is obnoxious and shines into house's windows
- Drivers speed up to display higher #



What's Next?



- If Public Supports the Plan
 - Final Design (Winter 2014-15)
 - Consider comments
 - Finalize design
 - Advertise and award
 - Construction (Spring 2015 – Fall 2015)



Field Test

BETA
ENGINEERING SUCCESS TOGETHER



LEGEND



REALIGNMENT



SLOW POINT ISLAND



SPEED REDUCTION MARKINGS



FEEDBACK SPEED SIGN



Field Test

BETA
ENGINEERING SUCCESS TOGETHER



LEGEND



REALIGNMENT



SLOW POINT ISLAND



SPEED REDUCTION MARKINGS



FEEDBACK SPEED SIGN







Field Test

BETA
ENGINEERING SUCCESS TOGETHER



LEGEND

-  REALIGNMENT
-  SLOW POINT ISLAND
-  SPEED REDUCTION MARKINGS
-  FEEDBACK SPEED SIGN



Field Test

BETA
ENGINEERING SUCCESS TOGETHER



LEGEND



REALIGNMENT



SLOW POINT ISLAND



SPEED REDUCTION MARKINGS



FEEDBACK SPEED SIGN



Field Test



LEGEND

-  REALIGNMENT
-  SLOW POINT ISLAND
-  SPEED REDUCTION MARKINGS
-  FEEDBACK SPEED SIGN






Field Test

BETA
ENGINEERING SUCCESS TOGETHER



LEGEND

-  REALIGNMENT
-  SLOW POINT ISLAND
-  SPEED REDUCTION MARKINGS
-  FEEDBACK SPEED SIGN



Field Test



LEGEND



REALIGNMENT



SLOW POINT ISLAND



SPEED REDUCTION MARKINGS







FEEDBACK SPEED SIGN



Field Test



LEGEND

-  REALIGNMENT
-  SLOW POINT ISLAND
-  SPEED REDUCTION MARKINGS
-  FEEDBACK SPEED SIGN



Field Test



LEGEND



REALIGNMENT



SLOW POINT ISLAND



SPEED REDUCTION MARKINGS



FEEDBACK SPEED SIGN



Field Test



LEGEND



REALIGNMENT



SLOW POINT ISLAND



SPEED REDUCTION MARKINGS

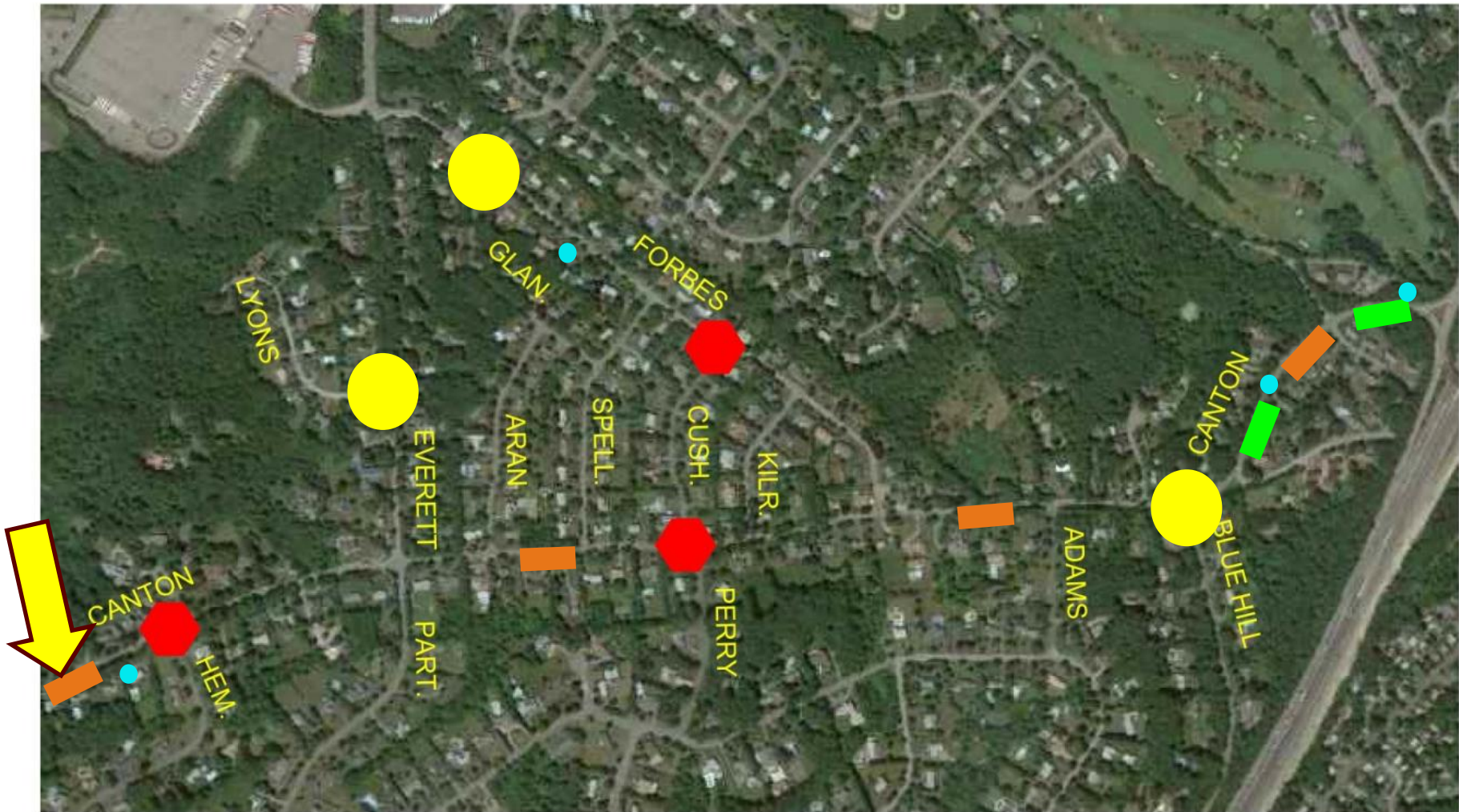


FEEDBACK SPEED SIGN



Field Test

BETA
ENGINEERING SUCCESS TOGETHER



LEGEND



REALIGNMENT



SLOW POINT ISLAND



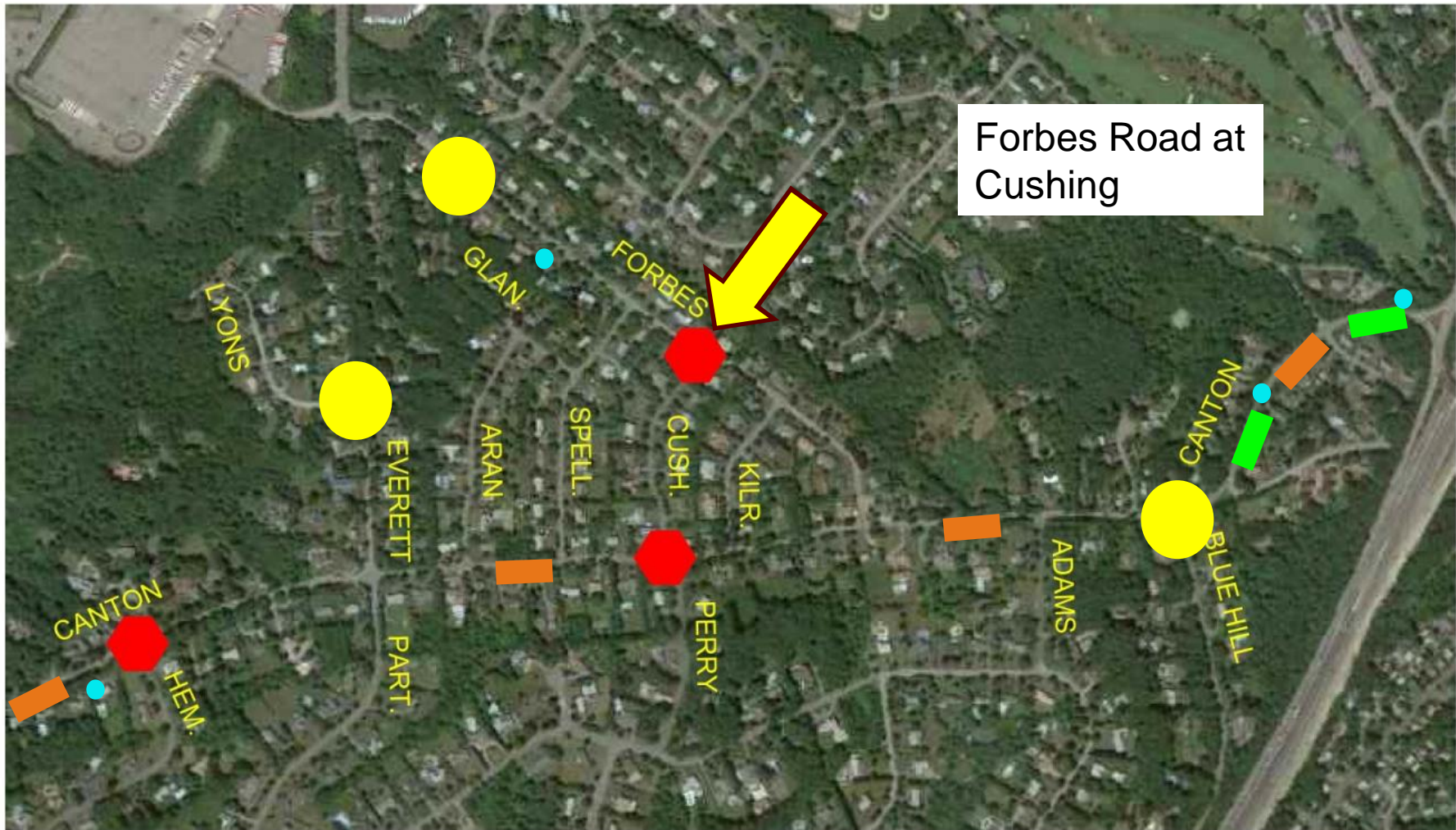
SPEED REDUCTION MARKINGS



FEEDBACK SPEED SIGN



Field Test



Forbes Road at Cushing

LEGEND



REALIGNMENT



SLOW POINT ISLAND



SPEED REDUCTION MARKINGS

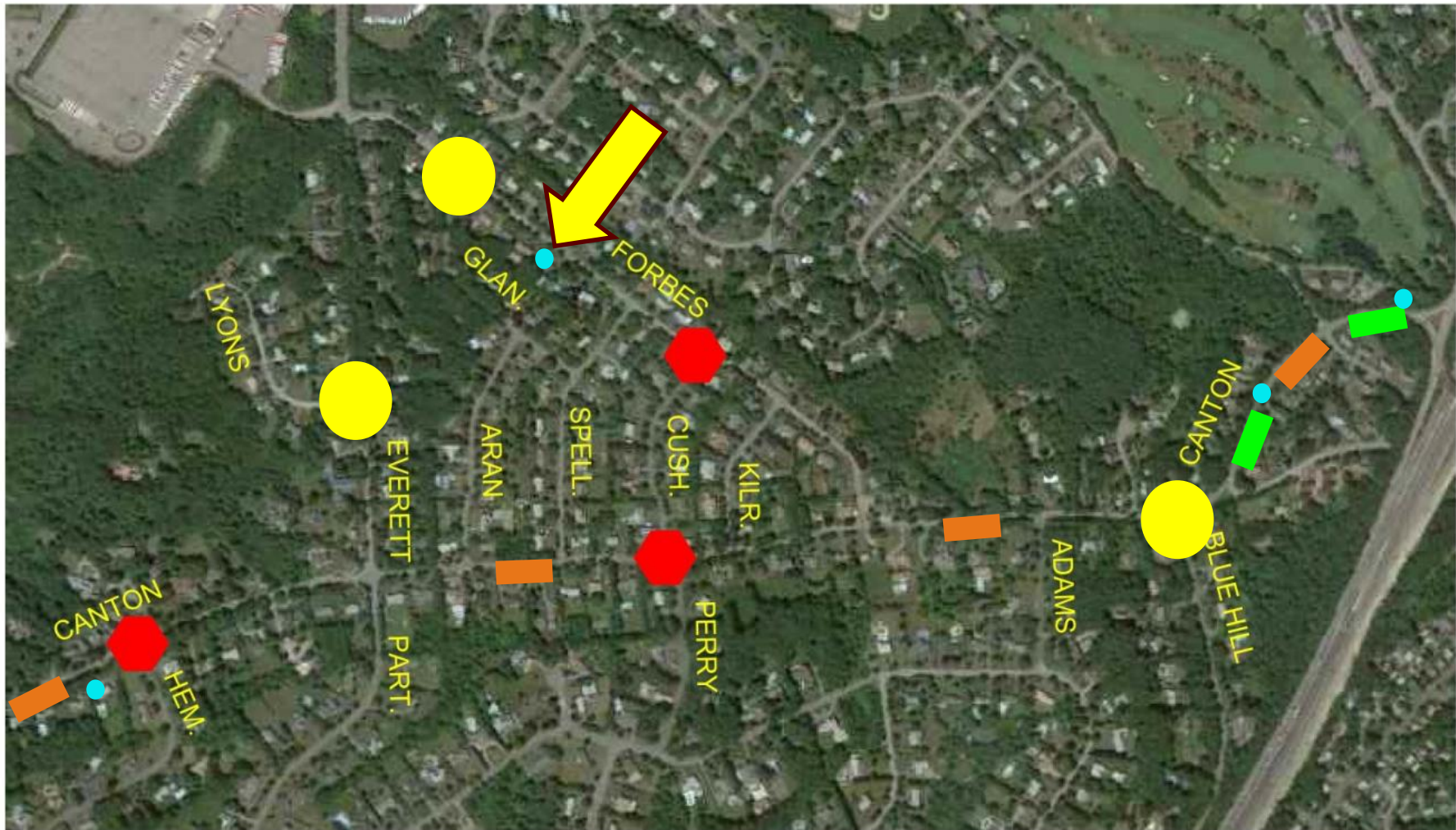


FEEDBACK SPEED SIGN



Field Test

BETA
ENGINEERING SUCCESS TOGETHER



LEGEND



REALIGNMENT



SLOW POINT ISLAND



SPEED REDUCTION MARKINGS



FEEDBACK SPEED SIGN



Town of Westwood

Thank You

December 8, 2014

