



Town of Westwood

C/E/F Neighborhood Traffic Calming Update



February 7, 2013





Tonight's Agenda



- History
- WWS vs. US – Then / Now
- Issues
 - Neighborhood Traffic
 - UA / Canton Street Intersection
- Next Steps



History – WWS to US



- 09/09 – C/E/F Approves Plan
- 11/09 – NCC Hearing
- 12/09 – NCC Decision
- 04/10 – C/E/F Approves Phased Plan
- 05/10 – 5/12 – WWS Sale Process
- 05/12 – NED/ERE Acquires WWS
- 12/12 – Agreement to Fund \$2.1M
- Tonight and Future



Then and Now



	<u>WWS</u> - 2008	<u>US</u> - 2013
Project Size	4.5M Sq. Ft.	2M Sq. Ft.
I-95 Ramp	Open Prior to Project	Open in 2022
Peak AM Counts	NB - 538 / SB - 478	NB - 487 / SB - 402
Peak PM Counts	NB - 521 / SB - 826	NB - 429 / SB - 718
Canton Street Speeds	Avg: NB 34; SB 33 85 th : NB 40; SB 39	Avg: NB 35; SB 34 85 th : NB 40; SB 39
Add-A-Lane	Not Started	Complete
I-95S Double Ramp	In Progress	Complete
WWS Boulevard	Part of Plan	Not Planned
Traffic Calming	\$2.1 M	\$2.1M



Traffic Calming



- \$2.1 M From Developer
 - \$350K Immediately - Speed Reduction
- First Phase
 - C/E/F NTCAG Approved On 4/29/2010
 - More Effective Phase for Speed Reduction?
- Next Phases
 - Develop Monitoring Process
 - Develop Threshold for Deployment
 - Approval (Neighborhood)



Traffic Calming Locations



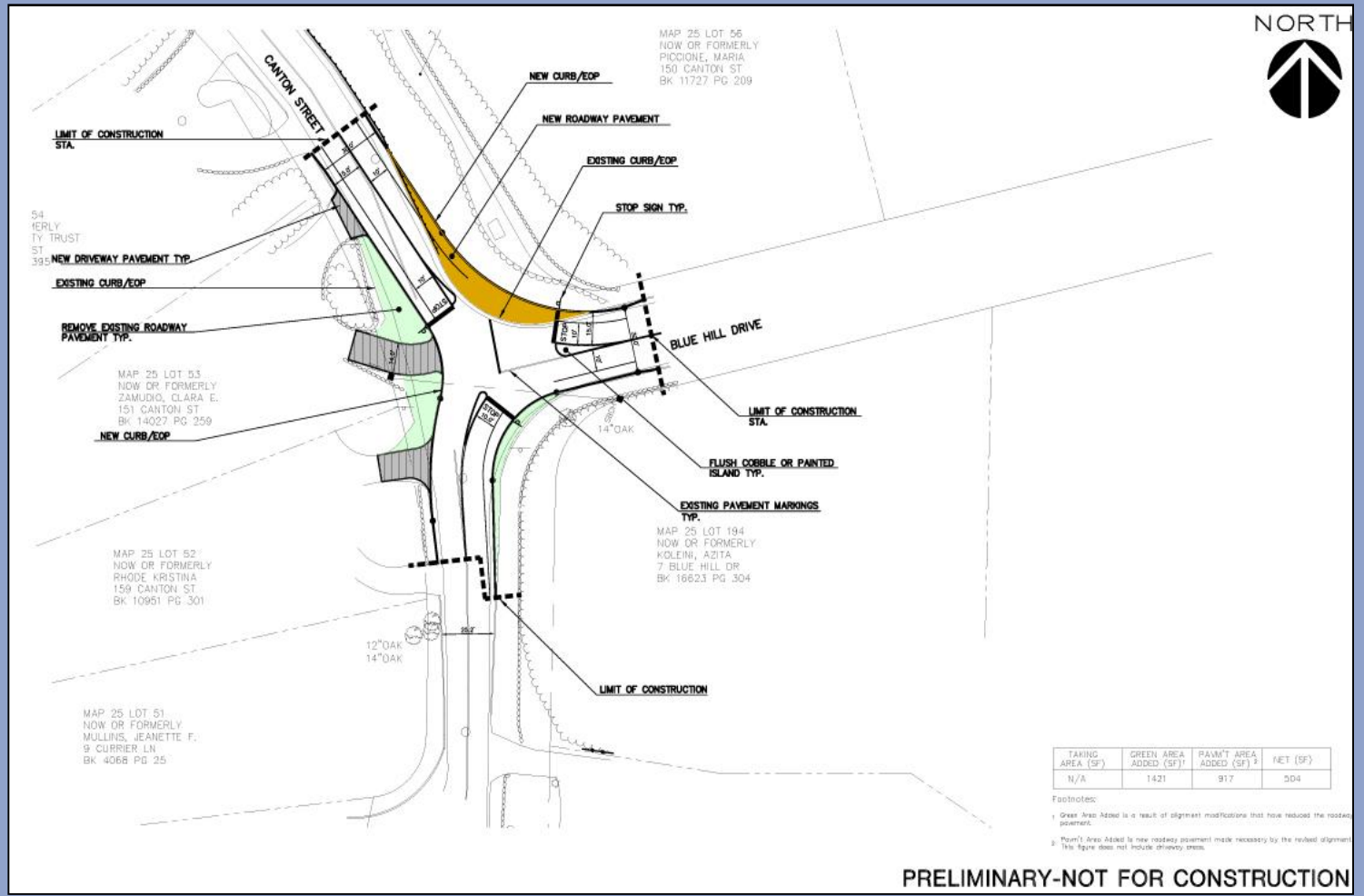
Canton at Blue Hill Drive	Realigned Intersection
Canton at Cushing Road / Perry Drive	Realigned Intersection
Canton at Hemlock Drive	Realigned Intersection
Canton at Forbes Road	Realigned Intersection
Canton at Everett Street	Roundabout
Canton at Downey Street / Metcalf Road	Speed Tables
Everett at Lyons Drive	Speed Tables
Everett at Forbes Road	Diverter
Canton North of Downey Street / Metcalf Road	Gateway
Everett East of Forbes	Gateway
Canton North of Oceana Drive	Gateway
Canton Between Downey Street / Metcalf Road and Canton Terrace	Median
Canton Between Spellman Road and Aran Road	Median
Canton Between Everett Street and Hemlock Drive	Median
Canton Between Hemlock Drive and Oceana Way	Median
Forbes Between Glandore Road and Spellman Road	Median
Forbes Between Canton Street and Kilronan Road	Median



Realigned Intersections



- Reduce Speeds
- Interrupt Long Straight Road Sections
- > 2000 ft. on Canton Street
- Stop Sign Required?

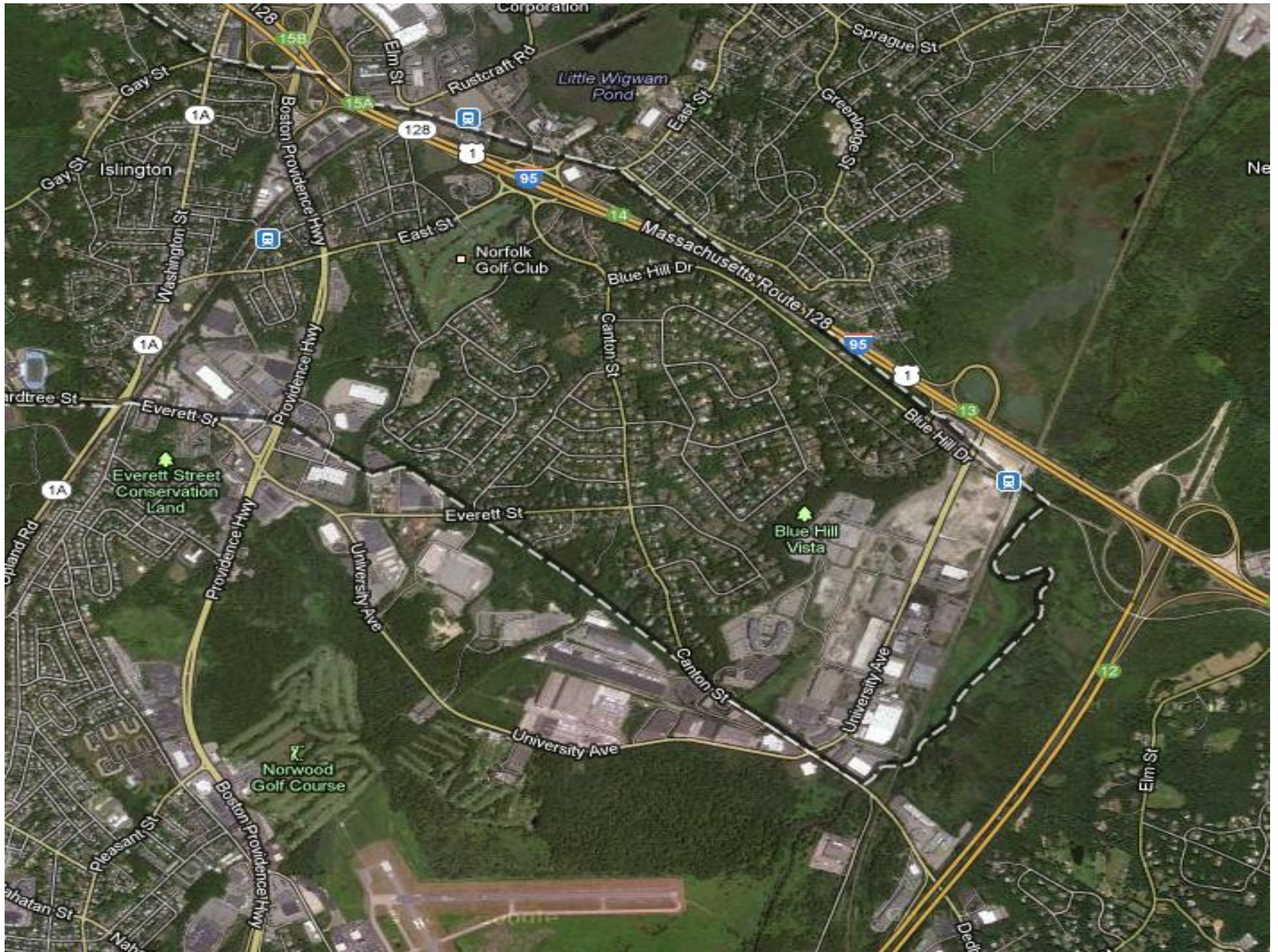


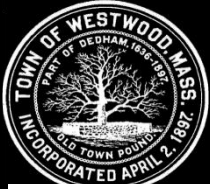


University Avenue – Canton Street

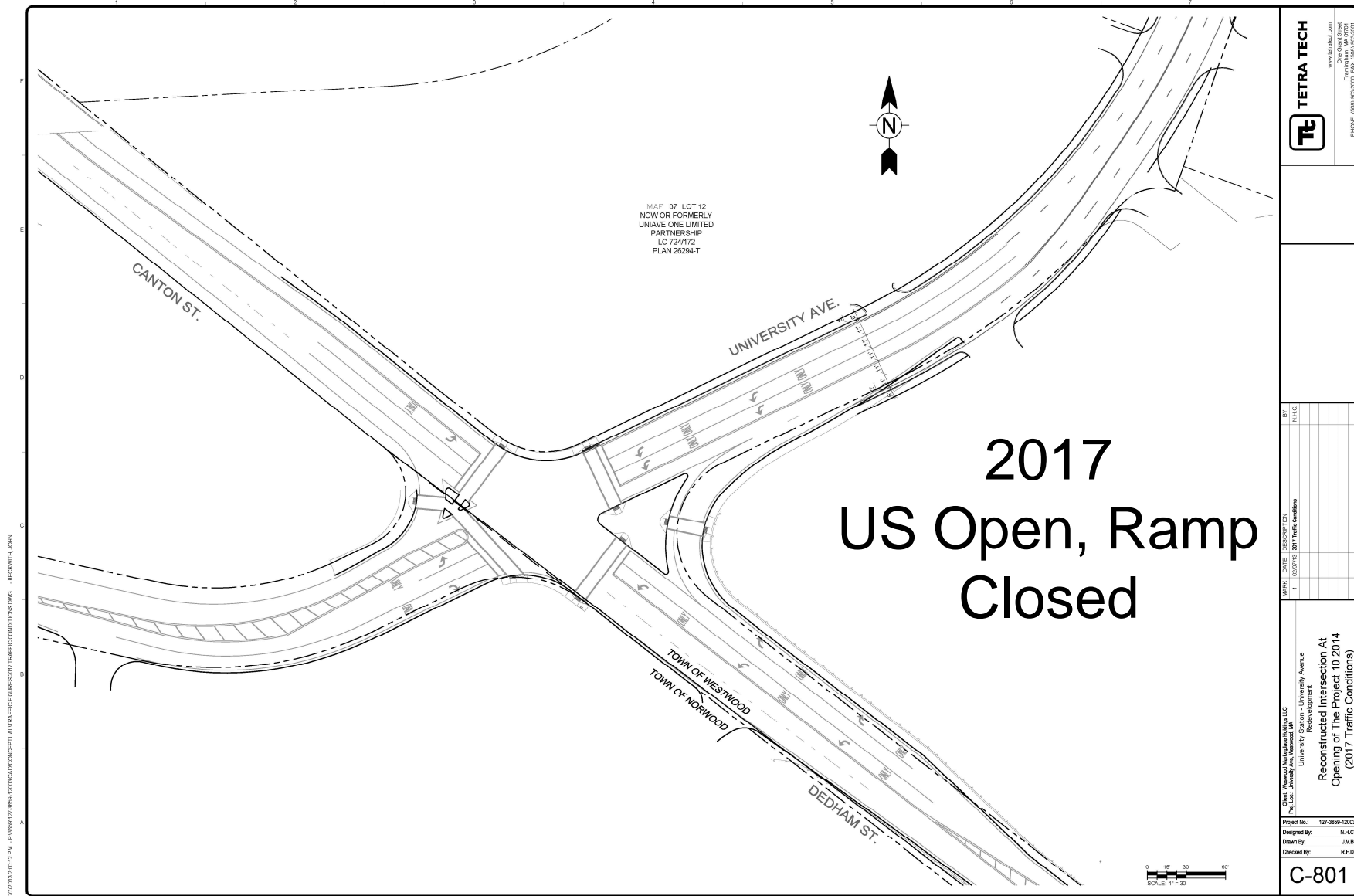


- Turn Restriction
 - No Left Turn Into Canton / No Right Turn Out Of University
 - Commercial Vehicles to 95 N / 93 N - Rt. 1
 - Employees to 95 / 93 N – Canton Street





In 2017



www.tetrattech.com
One Grant Street
Framingham, MA 01701
PHONE: (508) 862-2001 FAX: (508) 862-2001

NO.	DATE	DESCRIPTION
1	10/10/14	2017 Traffic Conditions

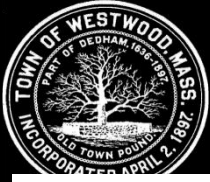
City of Westwood, Massachusetts, LLC
University Station - University Avenue
Redevelopment
191 Loc. University Ave, Westwood, MA
**Reconstructed Intersection At
Opening of The Project 10 2014
(2017 Traffic Conditions)**

Project No.: 127-969e-12003
Designed By: N.H.C.
Drawn By: J.V.B.
Checked By: R.F.D.

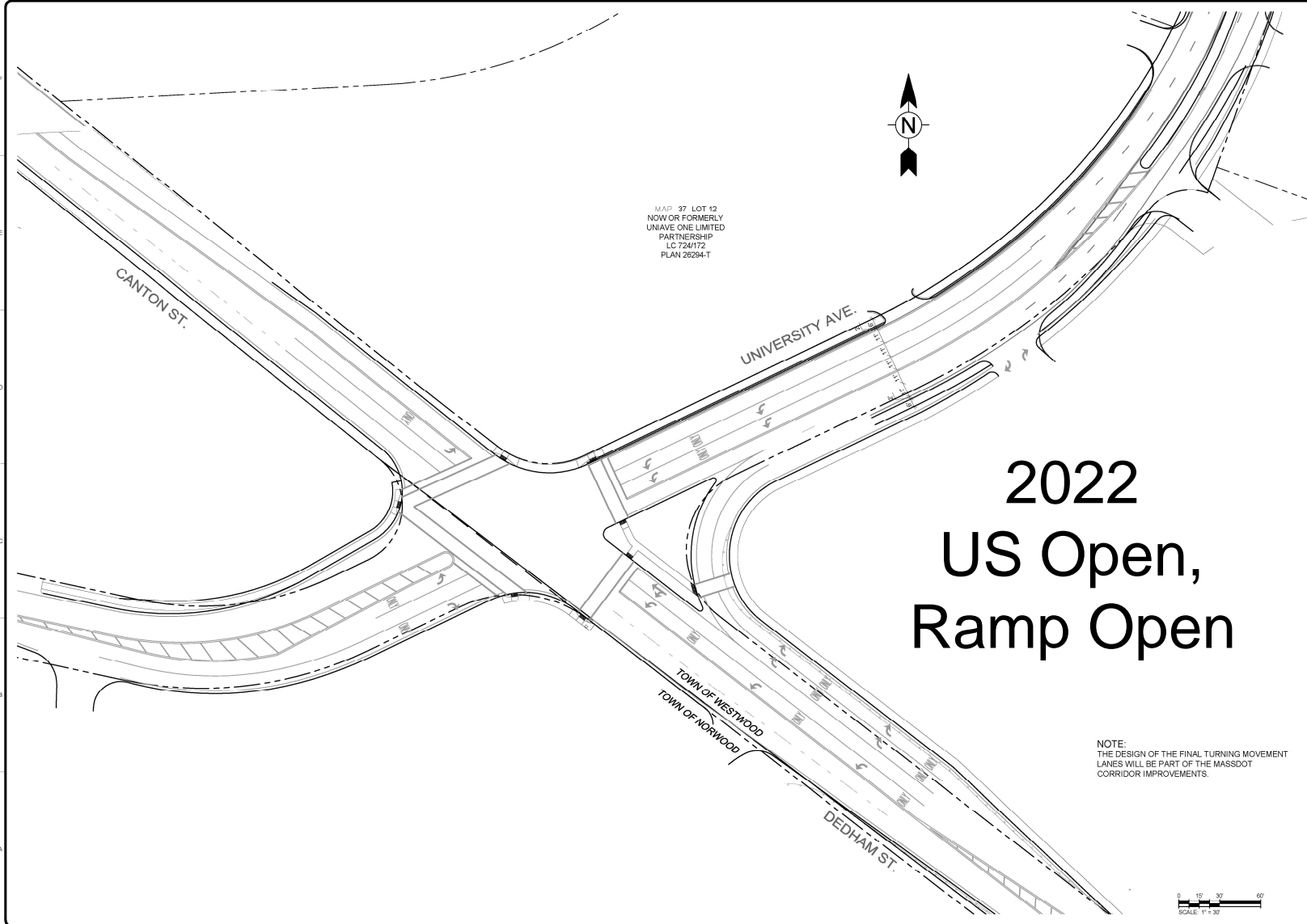
C-801

1/2/2015 2:10:52 PM P:\10850177-1850-12003\CONCEPTUAL\TRAFFIC\PROGRESS\011\TRAFFIC CONDITIONS.DWG - R2009171.DWG

Copyright © 2014 Tetra Tech



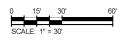
In 2022



MAP 37 LOT 12
 NOW OR FORMERLY
 UNIAVE ONE LIMITED
 PARTNERSHIP
 LC 724172
 PLAN 26264-T

2022 US Open, Ramp Open

NOTE:
 THE DESIGN OF THE FINAL TURNING MOVEMENT
 LANES WILL BE PART OF THE MASSDOT
 CORRIDOR IMPROVEMENTS.



TETRA TECH

www.tetrattech.com
 2000 Grant Street
 Framingham, MA 01701
 PHONE: (508) 880-1000 FAX: (508) 880-1001

DATE	DESCRIPTION	BY
1/20/2023	2022 Traffic Conditions	N.H.C.

Client: Westwood Redevelopment Authority LLC
 270 Col. Blinn Road
 University Station - University Avenue
 Redevelopment

Project No.: 127-3009-12000
 Designed By: N.H.C.
 Drawn By: J.V.B.
 Checked By: R.F.D.

Reconstructed Intersection at Completion
 of MassDOT I-95 N.B. Ramp & Dedham Street
 Corridor Improvements (2022 Traffic Conditions)

C-802

2702013 - 10:29 PM - P:\3009\17-3009-12000\DRAWINGS\TRAFFIC\TRAFFIC CONDITIONS DWG - BECKWITH, JOHN

DATE PLOTTED: 1/26/23

(See Measure 1 inch)



Next Steps



- Confirm Detailed Baseline Data
- BETA Propose
 - New Phase 1
 - Thresholds
- US Approval – Implement Phase 1
- US Opens
 - Monitor East Street Rotary to Left onto UA
 - Monitor UA Right to East Street Rotary
 - Threshold Exceeded, Implement Next Phase
- Set Next Meeting Date Tonight?
 - February 28th?