



Westwood Traffic Calming

Advisory Committee Update



July 1, 2008





Agenda

1. Homework Assignment Summary

2. Overview of the Measures

3. Overview of the Traffic Model

4. Schedule and Expectations

5. Committee Name

6. Google






7. Next Meetings



Homework Assignment

Westwood Traffic Calming Worksheet Rev. 2

Your Name _____
Your Address _____

Desired Action (as expressed at the opening charrette)	Effect	Practical to Implement?	Proposed Measure (as shown in the Glattig Jackson plan)	Meets Desired Action	Priority High Low	If Undesired Replace With ¹
1 Ramps from Westwood Station to I-95	Removes Westwood Station traffic from surface streets	No, unaffordable	Canton @ Blue Hill			
2 Left turn restrictions from Everett onto University	Discourages cut through from Everett onto University	No, outside jurisdiction	Realigned intersection	9 17 22		
3 Eliminate Everett near University	Eliminates cut through from Everett	No, worsens connectivity				
4 Add sidewalks	Improves neighborhood walk ability	No, unaffordable				
5 Install chicanes on Forbes	Reduces speeds and cut throughs	✓				
6 Close Forbes at Everett, Glandore, Spellman or Cushing	Eliminates cut throughs	No, worsens connectivity	Canton @ Cushing & Perry			
7 Narrow Forbes with footpath / trees	Reduces speeds and cut throughs; improves walkability	✓	Realigned intersection	9 22		
8 Create neighborhood gateways	Improved aesthetics, value	✓				
9 Add STOP signs along Canton and Forbes	Increases delays and reduces cut throughs	✓				
10 Add lanes on University	Increases capacity, speed	No, outside jurisdiction				
11 Close Canton	Eliminates cut throughs	No, worsens connectivity	Canton @ Downey & Metcalf			
12 Provide access from Blue Hill to 128	Encourages cut through's to avoid Canton	No, unaffordable	Realigned intersection	9 17 22		
13 Increase funding from \$1.3M	Allows more to be done	✓				
14 Left turn only from Forbes onto Everett	Discourages cut through's onto Forbes	✓				
15 Left turn restrictions from Canton into Westwood Station	Discourages cut through's onto Canton	✓				
16 Right turn restrictions from Westwood Station onto Canton	Discourages cut through's onto Canton	✓				
17 Canton Street blind spots between Downey and Blue Hill	Improves safety	Incidental	Canton @ Everett			
18 One way on Forbes and Everett	Reduces connectivity; increases speed	No, increases speeds	Roundabout	19 22		
19 Roundabout at Canton / Everett	Improves intersection safety; reduces speeds	✓				
20 Circle at Forbes and Kilronan	Improves intersection safety; reduces speeds	✓				
21 Cul-de-sac Canton	Eliminates cut through from Canton	No, worsens connectivity				
22 Narrow Canton	Reduces speed	✓	Canton @ Hemlock	9 17 22		
23 Narrow Everett	Reduces speed	✓	Realigned intersection			
						

¹Please use accompanying chart to select alternate measure
Return completed form to Chris McKeown at Town Hall by Monday, June 16, 2008
If you have any questions, call Najib at 860-246-7200



Homework Assignment (Cont'd)

Westwood Traffic Calming Worksheet Rev. 2

Your Name _____
Your Address _____

Desired Action (as expressed at the opening charrette)	Effect	Practical to Implement?	Proposed Measure (as shown in the Glattling Jackson plan)	Meets Desired Action	Priority High Low	If Undesired Replace With ¹
1 Ramps from Westwood Station to I-95	Removes Westwood Station traffic from surface streets	No, unaffordable				
2 Left turn restrictions from Everett onto University	Discourages cut through from Everett onto University	No, outside jurisdiction				
3 Eliminate Everett near University	Eliminates cut through from Everett	No, worsens connectivity				
4 Add sidewalks	Improves neighborhood walk ability	No, unaffordable				
5 Install chicanes on Forbes	Reduces speeds and cut throughs	✓	Forbes @ Cushing Realigned intersection	9 17 22		
6 Close Forbes at Everett, Glandore, Spellman or Cushing	Eliminates cut throughs	No, worsens connectivity				
7 Narrow Forbes with footpath / trees	Reduces speeds and cut throughs; improves walkability	✓	Forbes @ Glandore Realigned intersection	9 17 22		
8 Create neighborhood gateways	Improved aesthetics, value	✓				
9 Add STOP signs along Canton and Forbes	Increases delays and reduces cut throughs	✓				
10 Add lanes on University	Increases capacity, speed	No, outside jurisdiction				
11 Close Canton	Eliminates cut throughs	No, worsens connectivity				
12 Provide access from Blue Hill to 128	Encourages cut through's to avoid Canton	No, unaffordable				
13 Increase funding from \$1.3M	Allows more to be done	✓				
14 Left turn only from Forbes onto Everett	Discourages cut through's onto Forbes	✓				
15 Left turn restrictions from Canton into Westwood Station	Discourages cut through's onto Canton	✓				
16 Right turn restrictions from Westwood Station onto Canton	Discourages cut through's onto Canton	✓				
17 Canton Street blind spots between Downey and Blue Hill	Improves safety	✓				
18 One way on Forbes and Everett	Reduces connectivity; increases speed	No, increases speeds				
19 Roundabout at Canton / Everett	Improves intersection safety; reduces speeds	✓				
20 Circle at Forbes and Kilronan	Improves intersection safety; reduces speeds	✓				
21 Cul-de-sac Canton	Eliminates cut through from Canton	No, worsens connectivity				
22 Narrow Canton	Reduces speed	✓				
23 Narrow Everett	Reduces speed	✓				
			North & south end of Canton Gateways	8		
			Midblock between intersections Choker or chicane	5		
			Along all streets Lane diet	22 23		

¹Please use accompanying chart to select alternate measure
Return completed form to Chris McKeown at Town Hall by Monday, June 16, 2008
If you have any questions, call Najib at 860-246-7200



Homework Assignment (Cont'd)

Westwood Traffic Calming Worksheet Rev. 2

Your Name _____
Your Address _____

Desired Action (as expressed at the opening charrette)	Effect	Practical to Implement?
1 Ramps from Westwood Station to I-95	Removes Westwood Station traffic from surface streets	No, unaffordable
2 Left turn restrictions from Everett onto University	Discourages cut through from Everett onto University	No, outside jurisdiction
3 Eliminate Everett near University	Eliminates cut through from Everett	No, worsens connectivity
4 Add sidewalks	Improves neighborhood walk ability	No, unaffordable
5 Install chicanes on Forbes	Reduces speeds and cut throughs	✓
6 Close Forbes at Everett, Glandore, Spellman or Cushing	Eliminates cut throughs	No, worsens connectivity
7 Narrow Forbes with footpath / trees	Reduces speeds and cut throughs; improves walkability	✓
8 Create neighborhood gateways	Improved aesthetics, value	✓
9 Add STOP signs along Canton and Forbes	Increases delays and reduces cut throughs	✓
10 Add lanes on University	Increases capacity, speed	No, outside jurisdiction
11 Close Canton	Eliminates cut throughs	No, worsens connectivity
12 Provide access from Blue Hill to 128	Encourages cut through's to avoid Canton	No, unaffordable
13 Increase funding from \$1.3M	Allows more to be done	✓
14 Left turn only from Forbes onto Everett	Discourages cut through's onto Forbes	✓
15 Left turn restrictions from Canton into Westwood Station	Discourages cut through's onto Canton	✓
16 Right turn restrictions from Westwood Station onto Canton	Discourages cut through's onto Canton	✓
17 Canton Street blind spots between Downey and Blue Hill	Improves safety	✓
18 One way on Forbes and Everett	Reduces connectivity; increases speed	No, increases speed
19 Roundabout at Canton / Everett	Improves intersection safety; reduces speeds	✓
20 Circle at Forbes and Kilronan	Improves intersection safety; reduces speeds	✓
21 Cul-de-sac Canton	Eliminates cut through from Canton	No, worsens connectivity
22 Narrow Canton	Reduces speed	✓
23 Narrow Everett	Reduces speed	✓

Proposed Measure
(as shown in the Glatting Jackson plan)

Forbes @ Everett
Turn restrictions



Meets Desired Action
Priority High Low
If Undesired Replace With¹

14

--	--	--

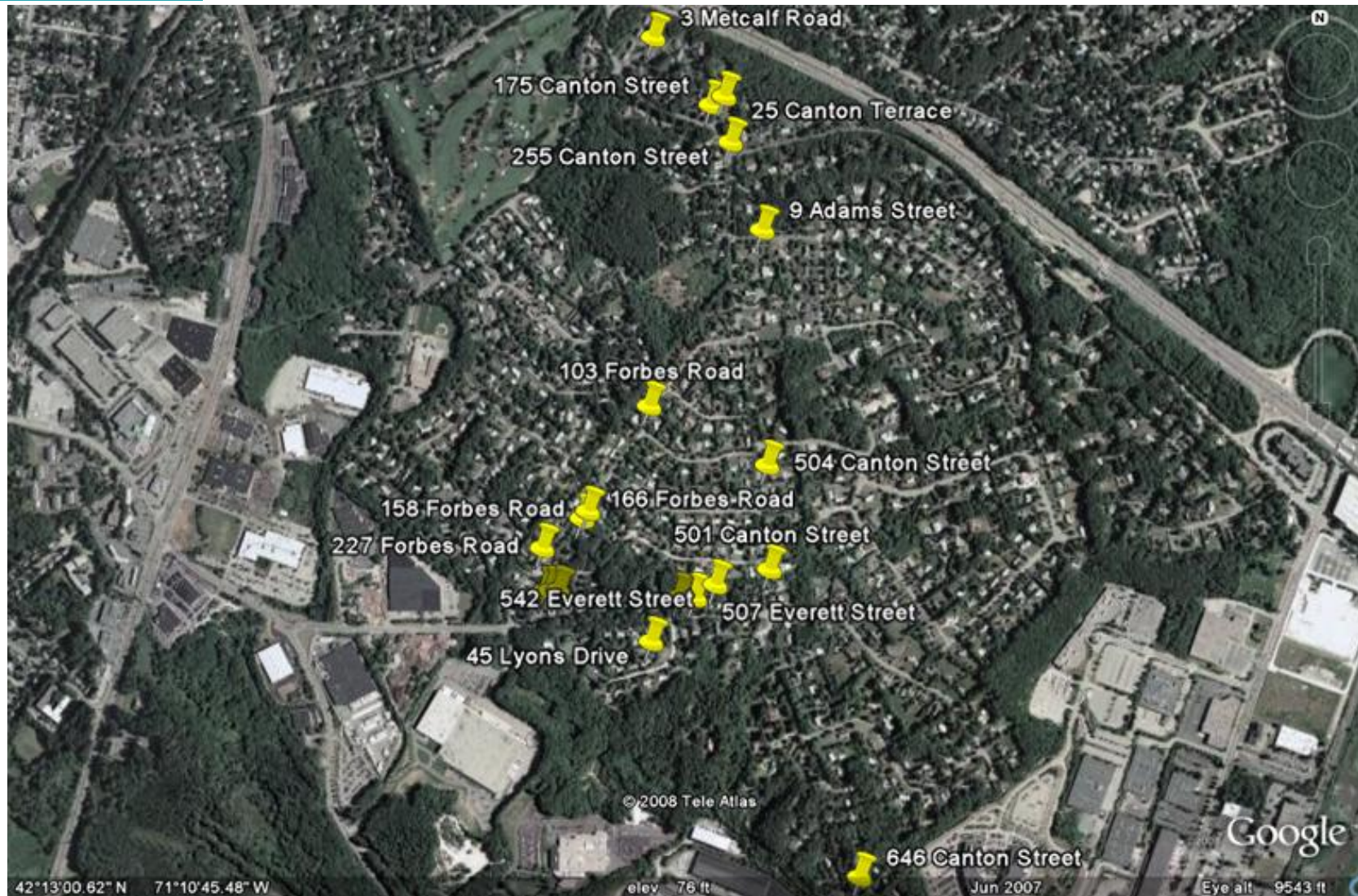
¹Please use accompanying chart to select alternate measure
Return completed form to Chris McKeown at Town Hall by Monday, June 16, 2008
If you have any questions, call Najib at 860-246-7200



Homework Response Summary

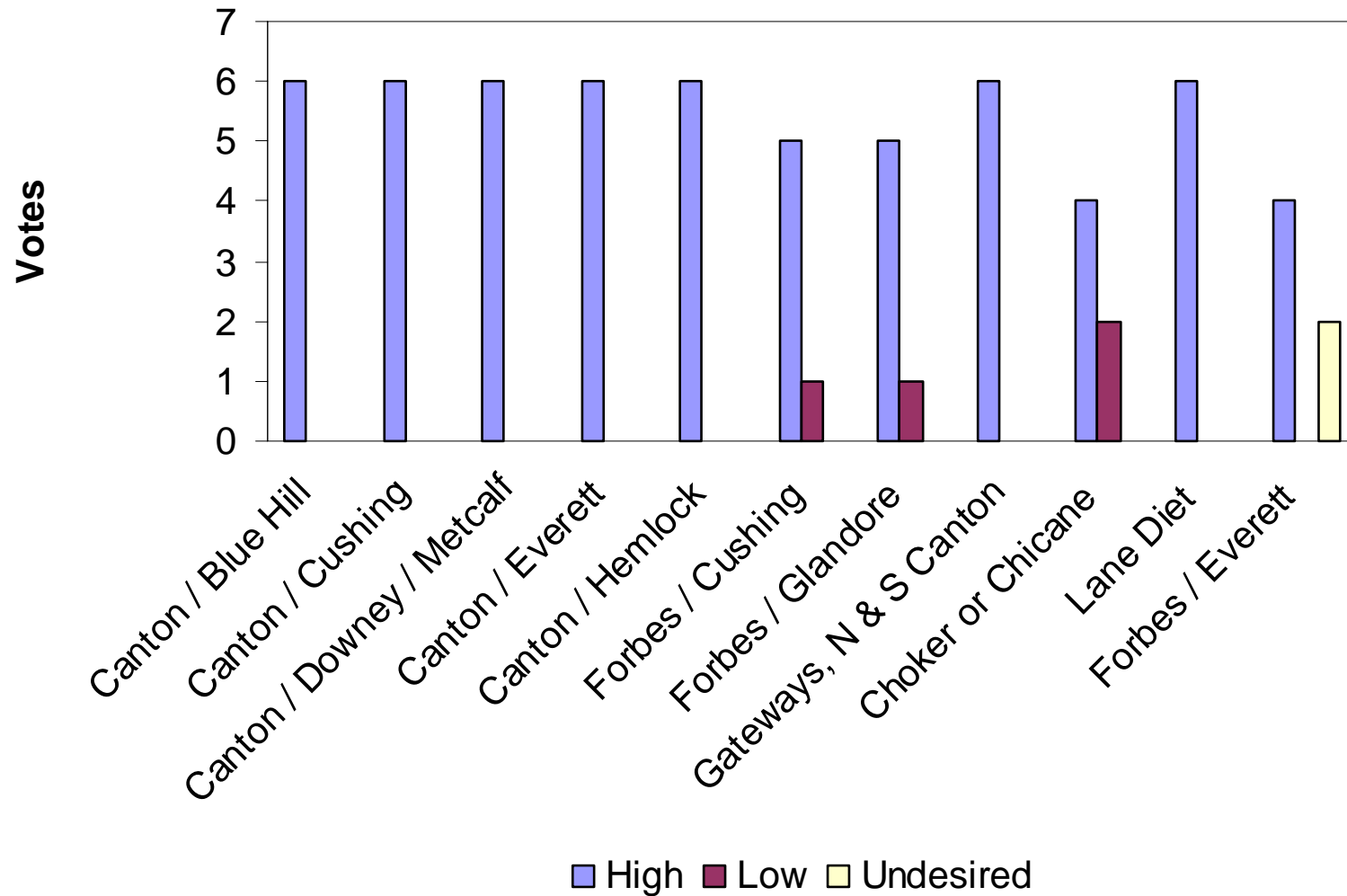
- 21 Responses (2 from same household)
 - 6 From Canton Street
 - 7 From Everett Street
 - 4 From Forbes Road
 - 4 From Other Streets (Adams, Metcalf, Lyons, Canton Terrace)

Response Distribution



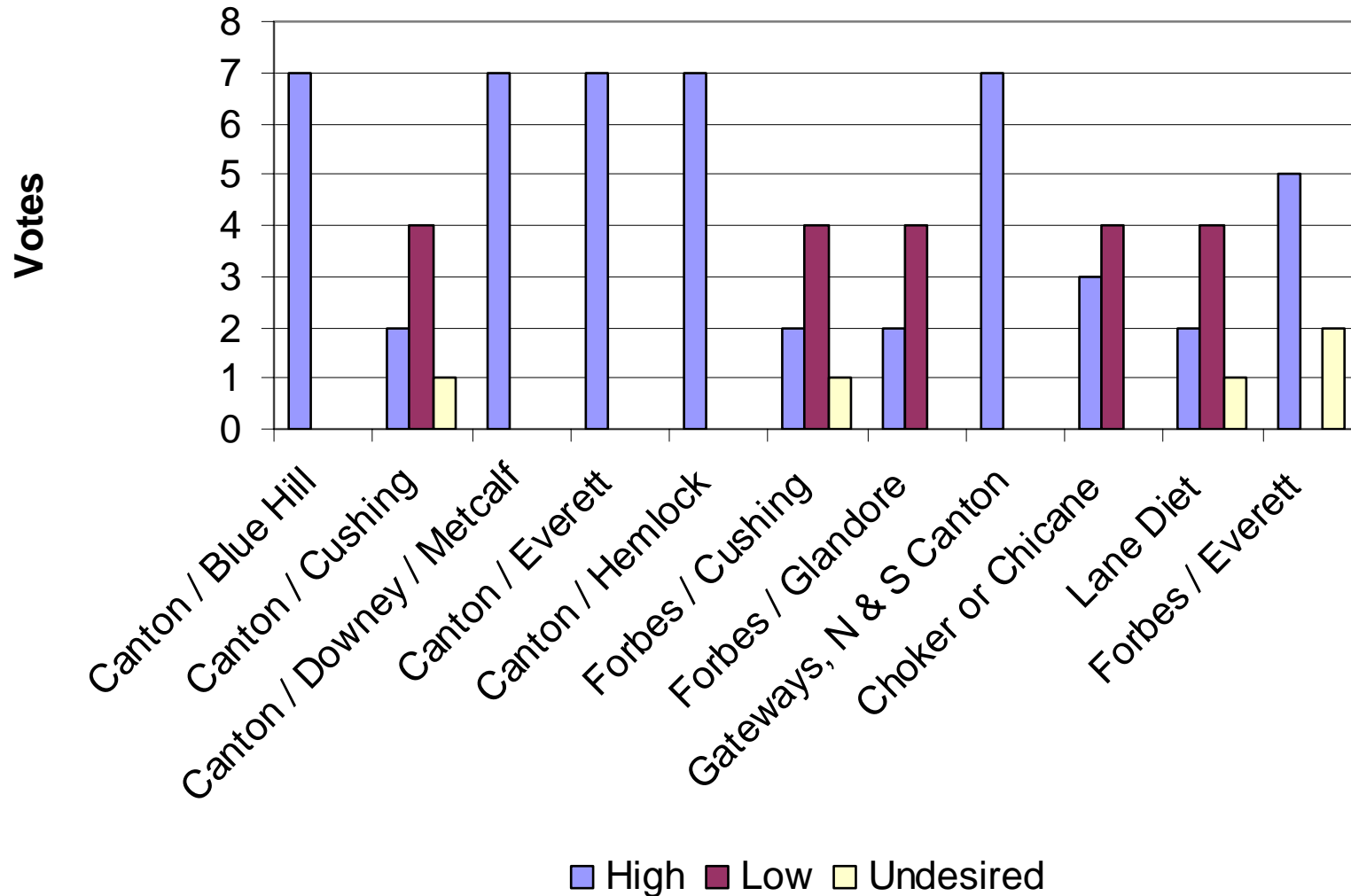


Canton Street Residents



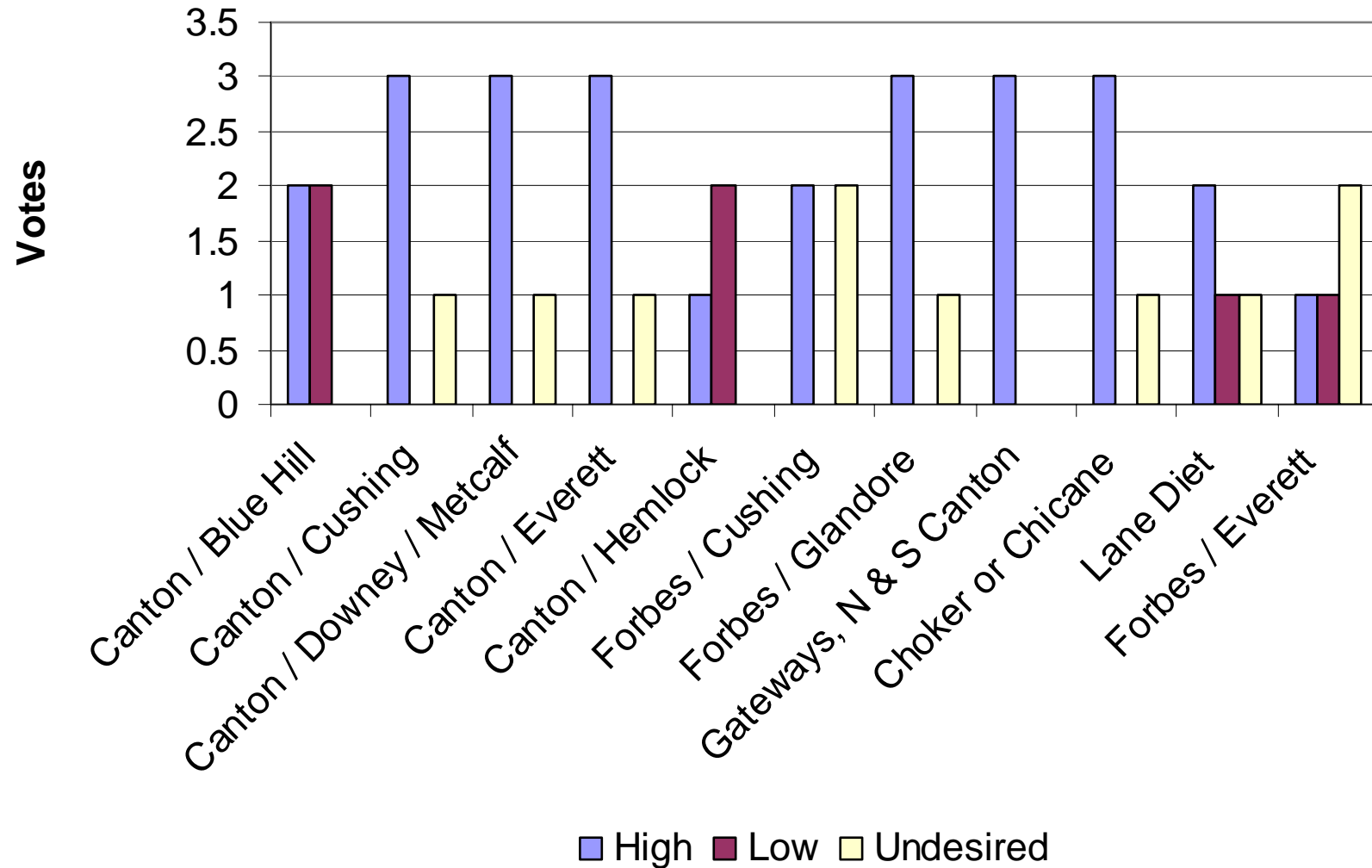


Everett Street Residents



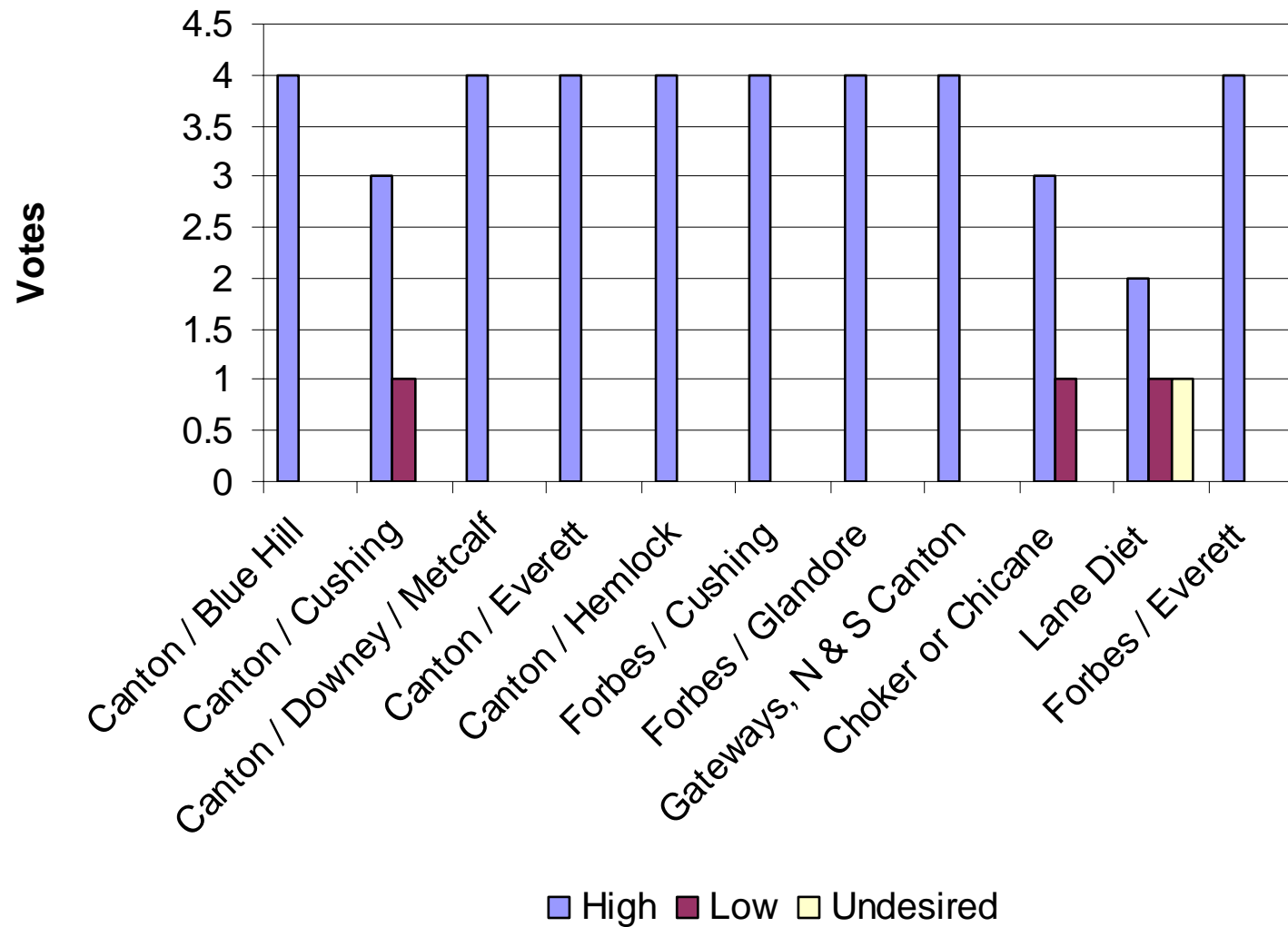


Forbes Street Residents



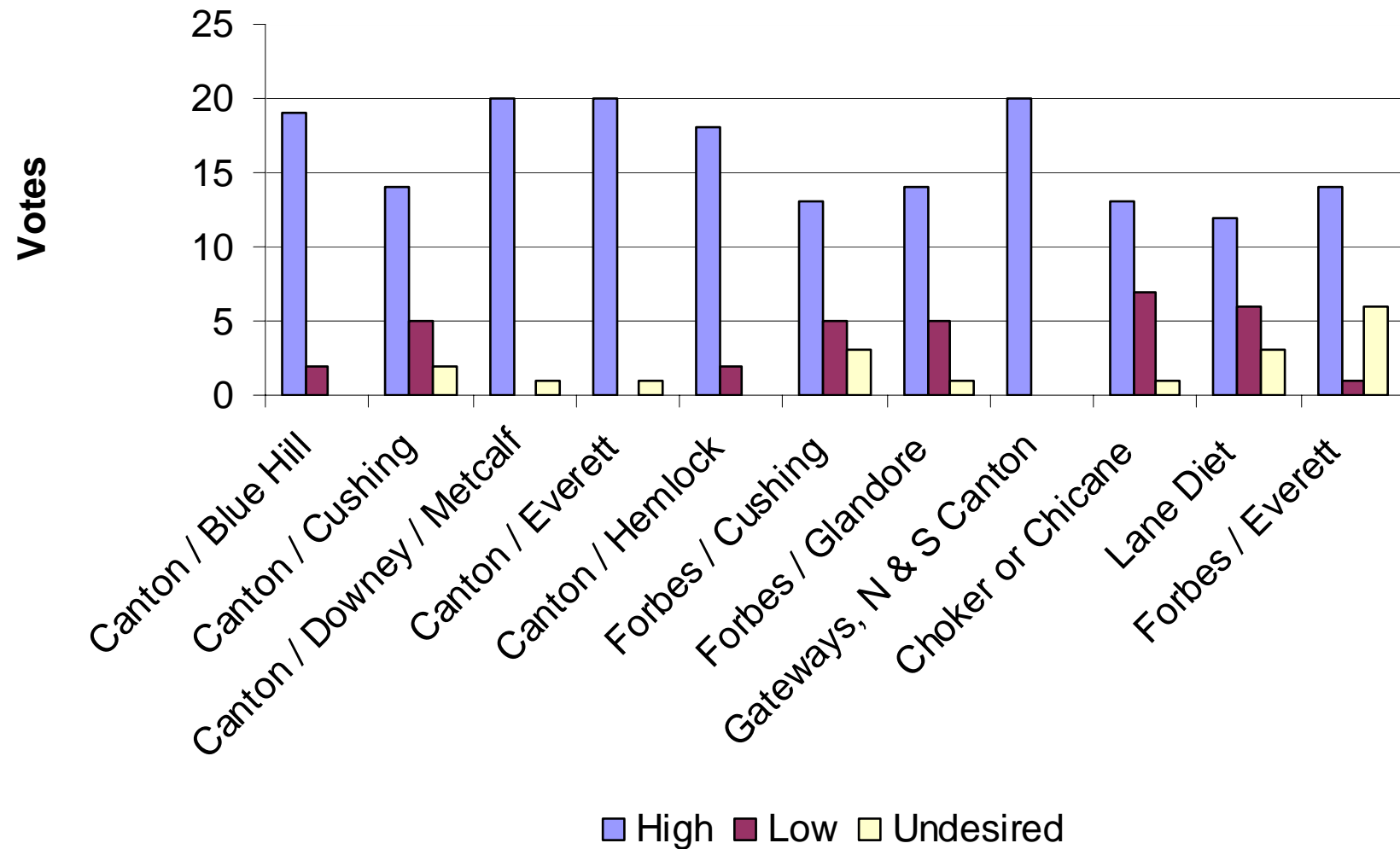


Other Streets





Overall Votes





Alternative Measures

Canton @ Cushing & Perry	Circle			
Canton @ Downey & Metcalf	Circle	Gateway		
Canton @ Everett	Circle			
Forbes @ Cushing	Circle	Realign, Circle		
Forbes @ Glandore	Circle	Realign, Circle		
Forbes @ Everett	Roundabout	Medians, Circle	Gateway	Rotary
Canton @ Forbes	Realign			
Forbes	Closure			



Additional Comments Received

- More traffic calming on Everett Street
- Has enough money been set aside for all options to be implemented?
- Are there measures – other than Glatting's - that should be considered?
- Do not overuse STOP signs
- Lane diets are very good
- What do the red marks across the road on the Glatting plan mean?

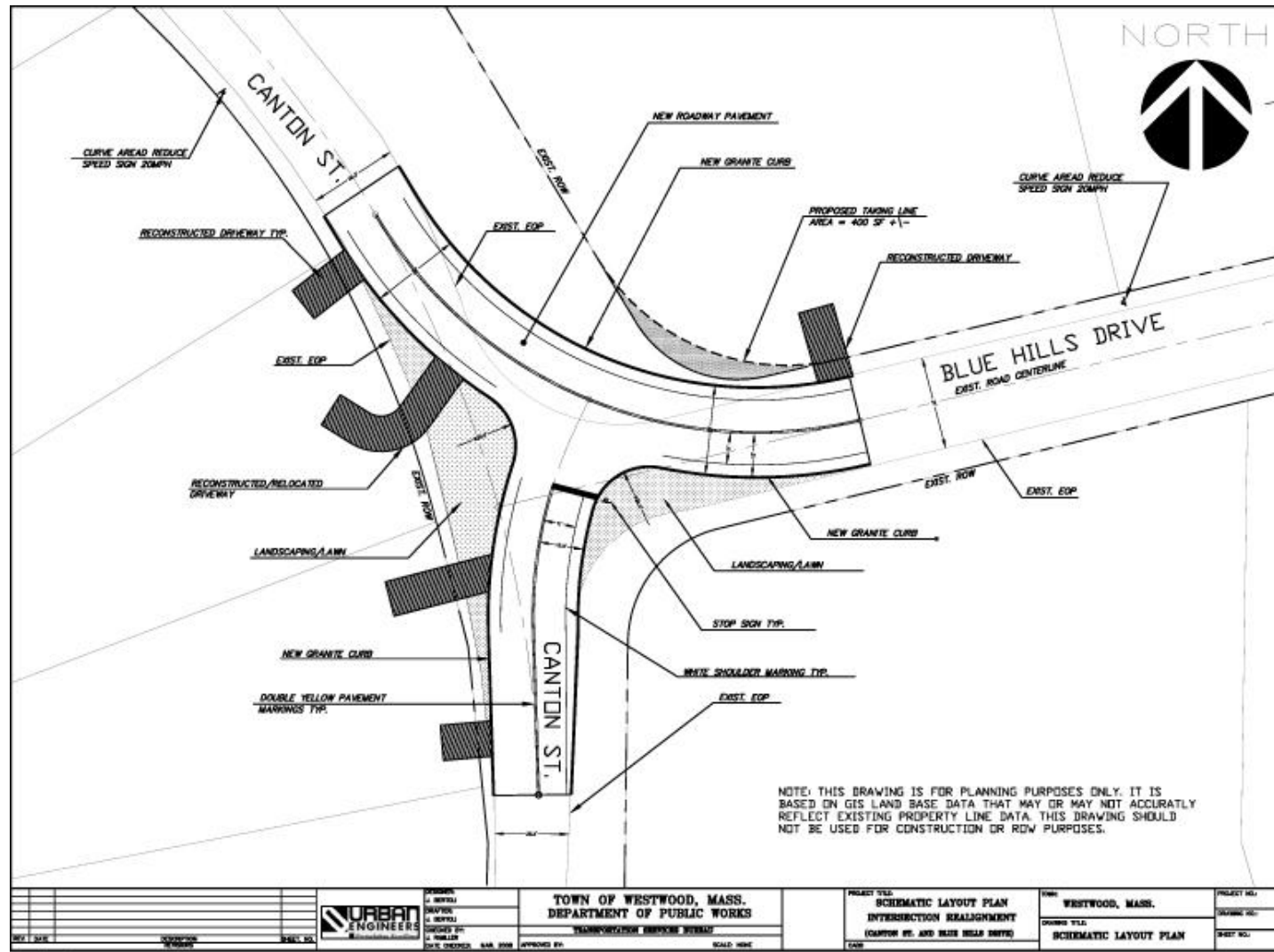


Canton at Blue Hill





Canton at Blue Hill

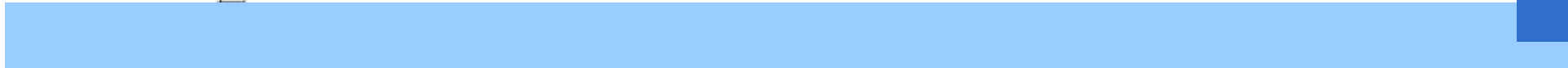




Forbes at Glandore

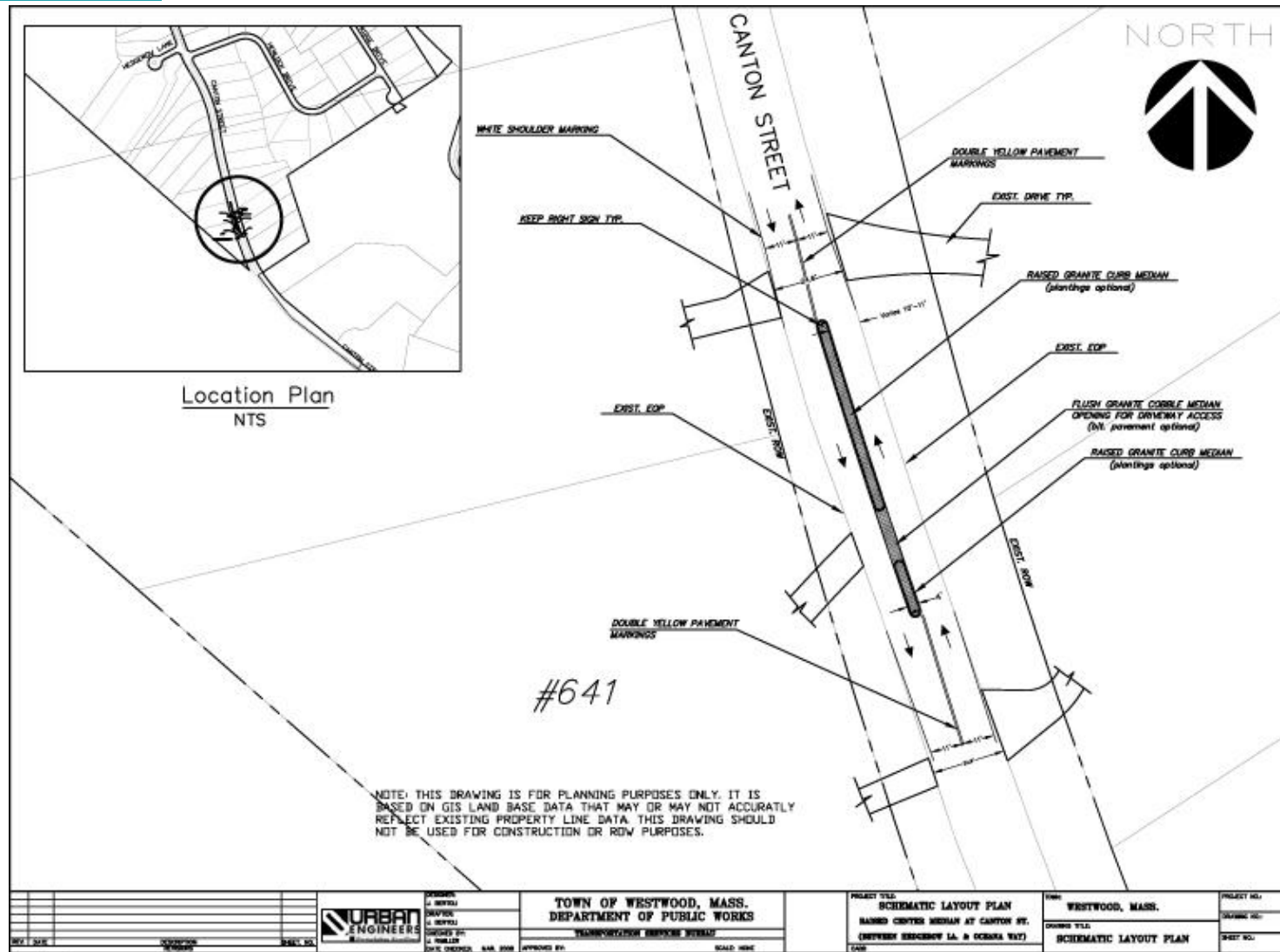
**Forbes at
Glandore Road**





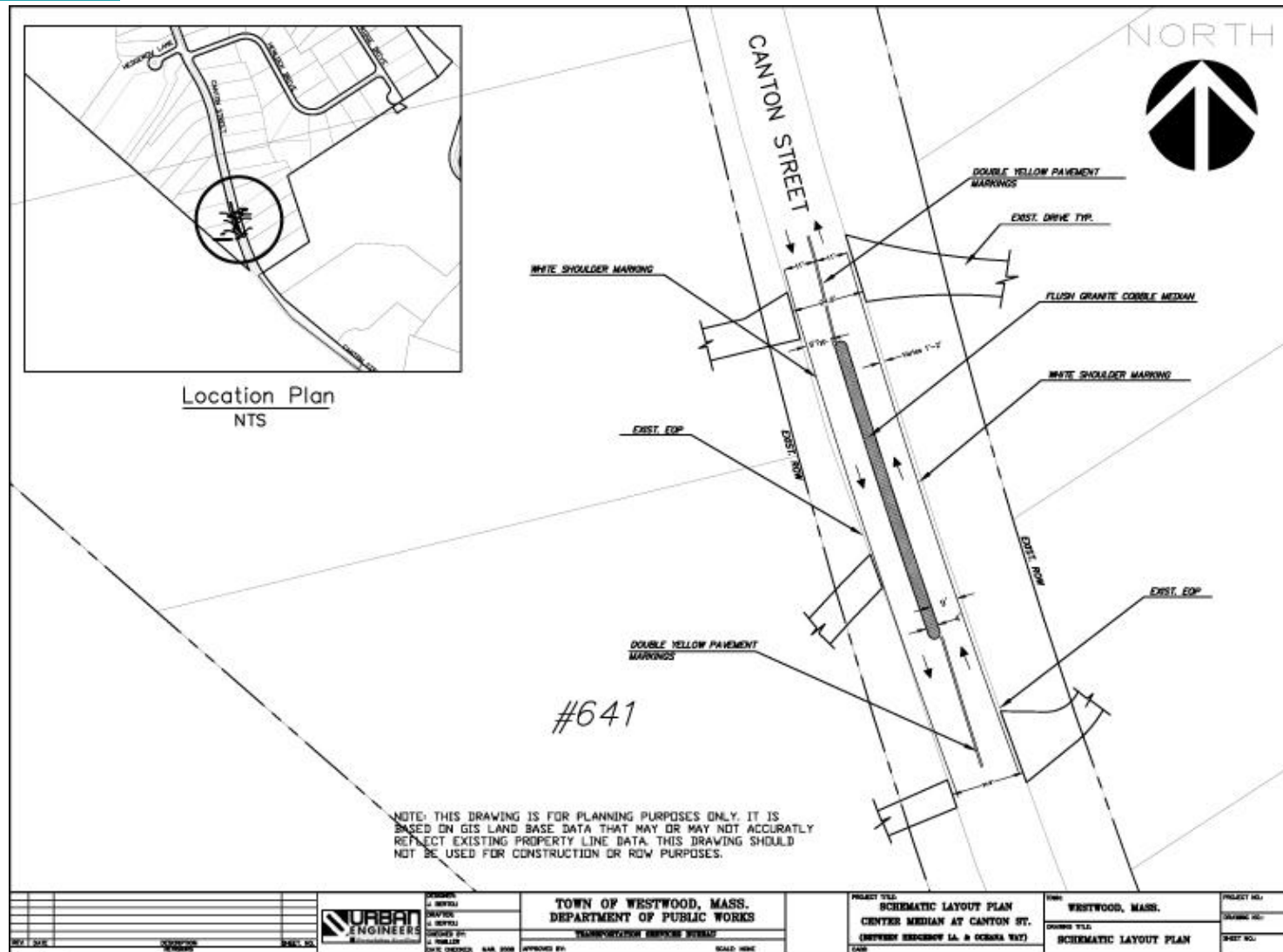


Median – 4' Raised





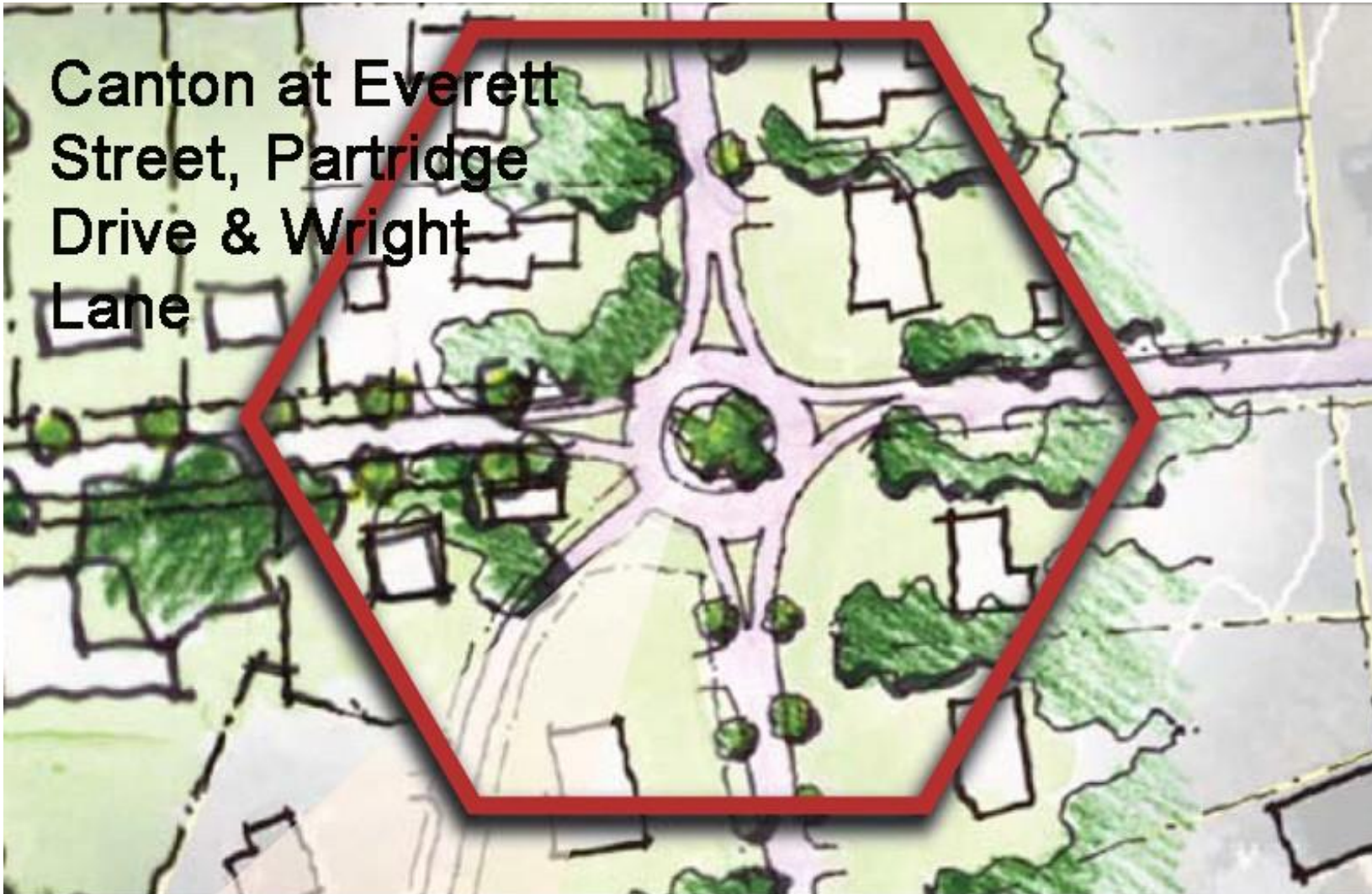
Median - Flush





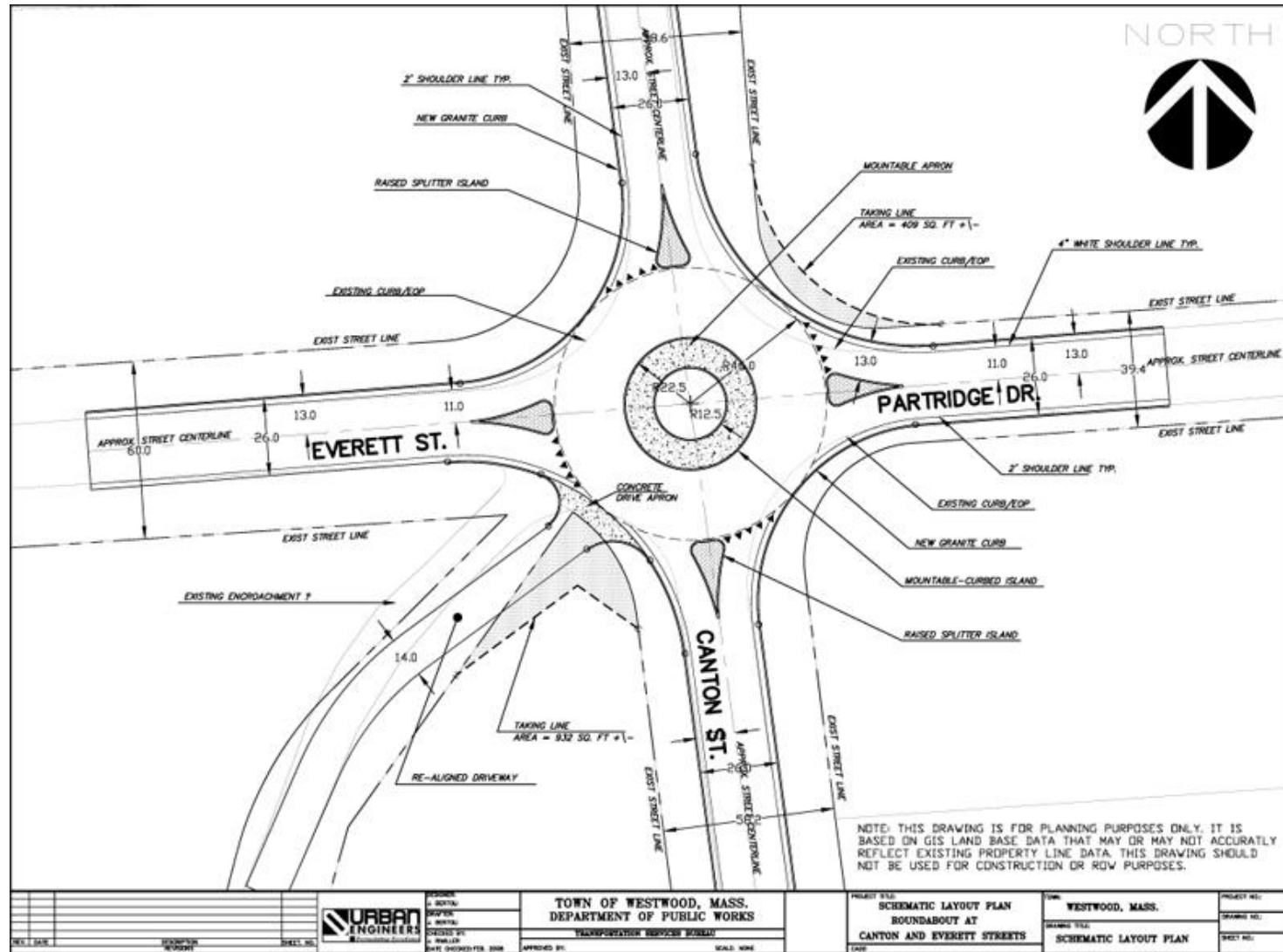
Canton at Everett

**Canton at Everett
Street, Partridge
Drive & Wright
Lane**





Canton at Everett



Roundabout Examples

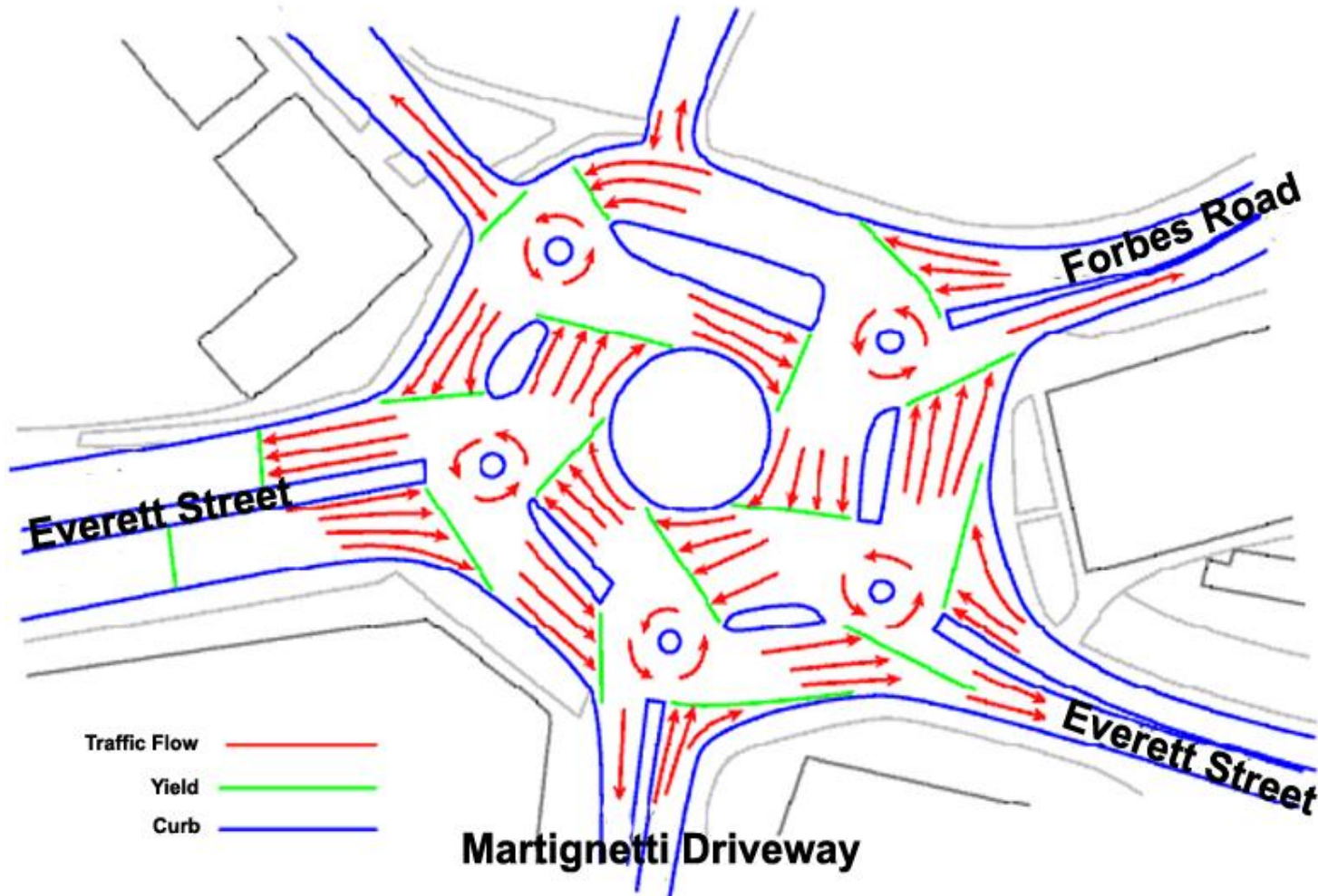


Roundabout Examples





Forbes at Everett

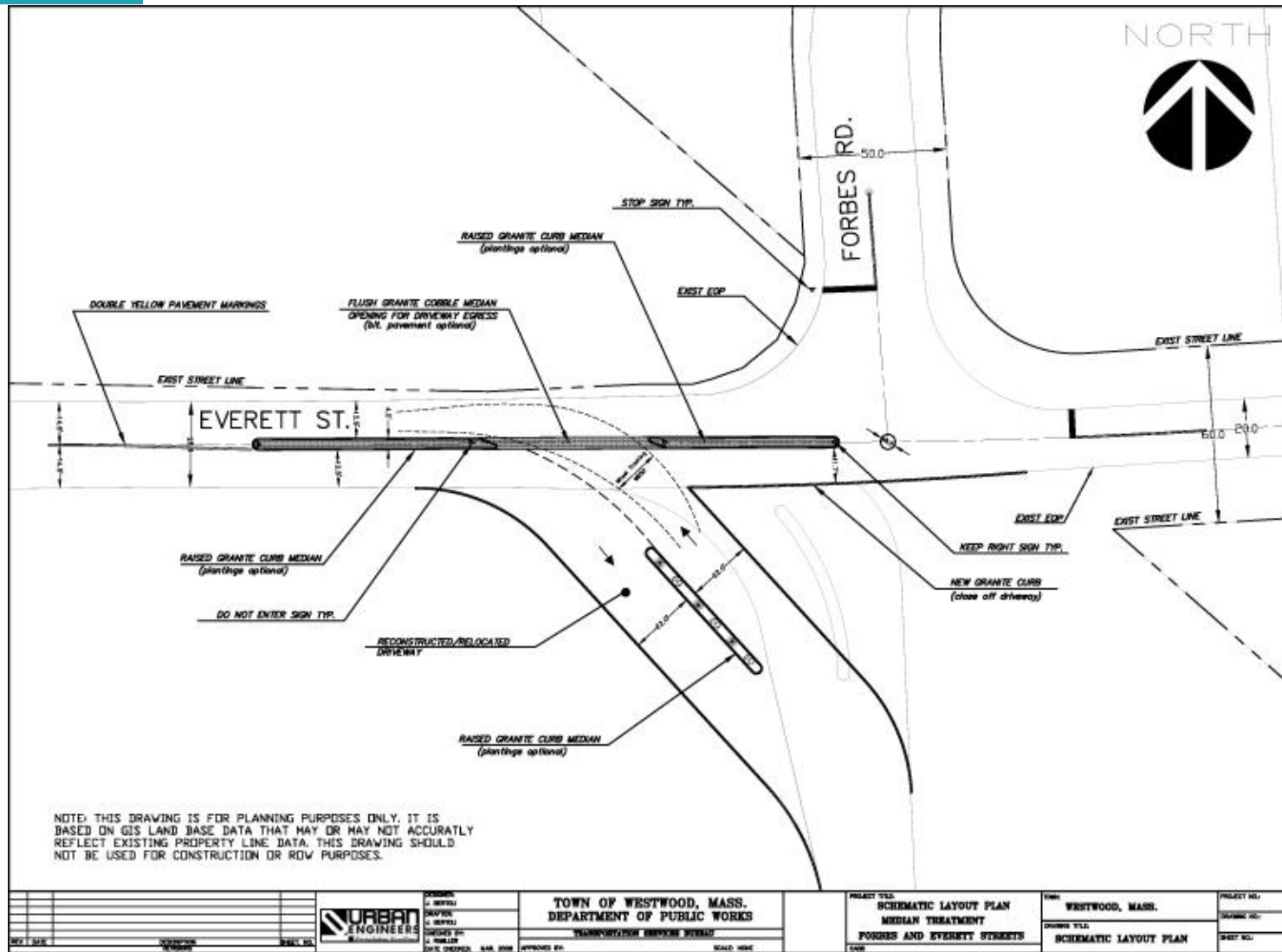






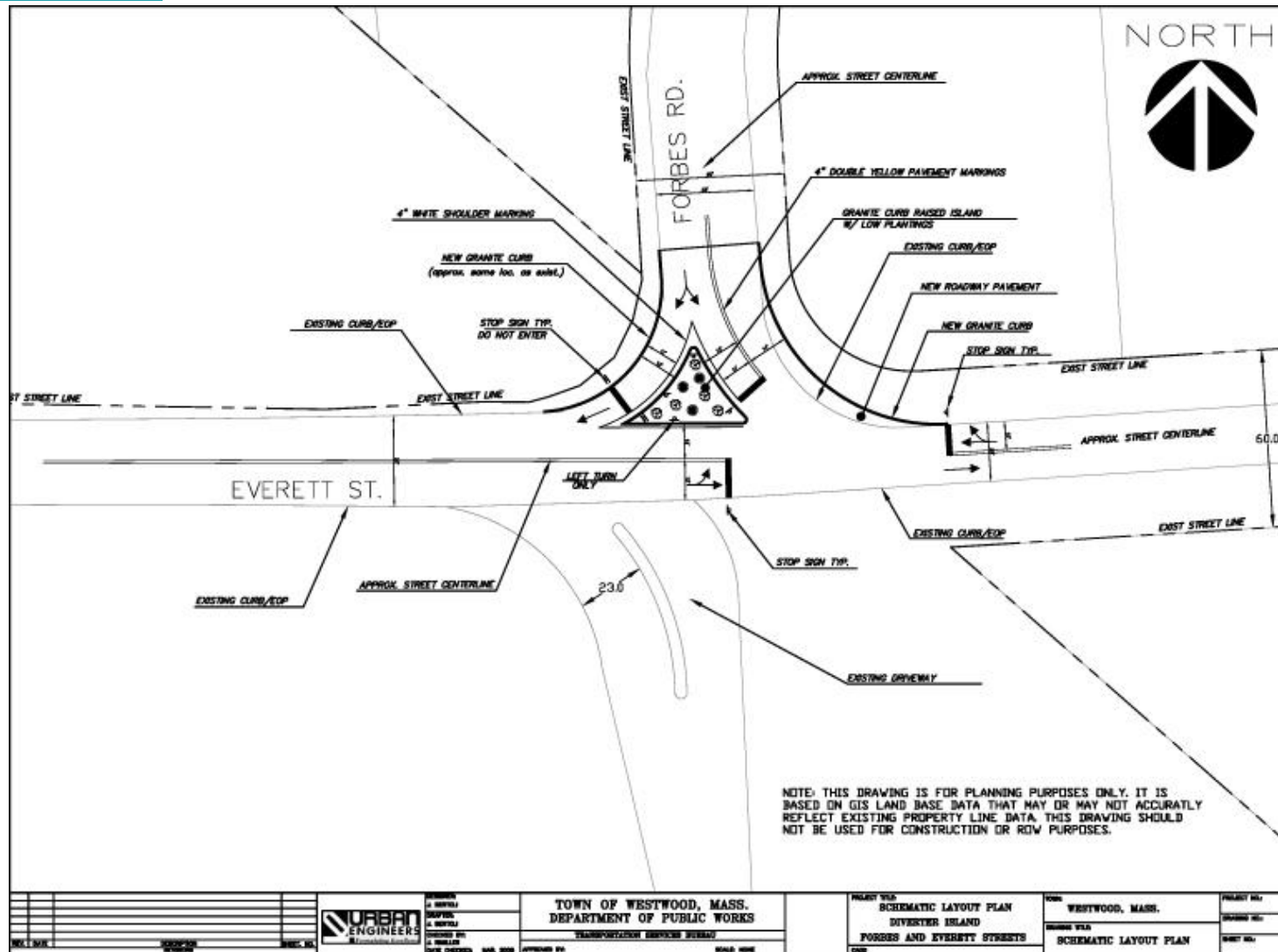


Forbes at Everett – Eric's Concept



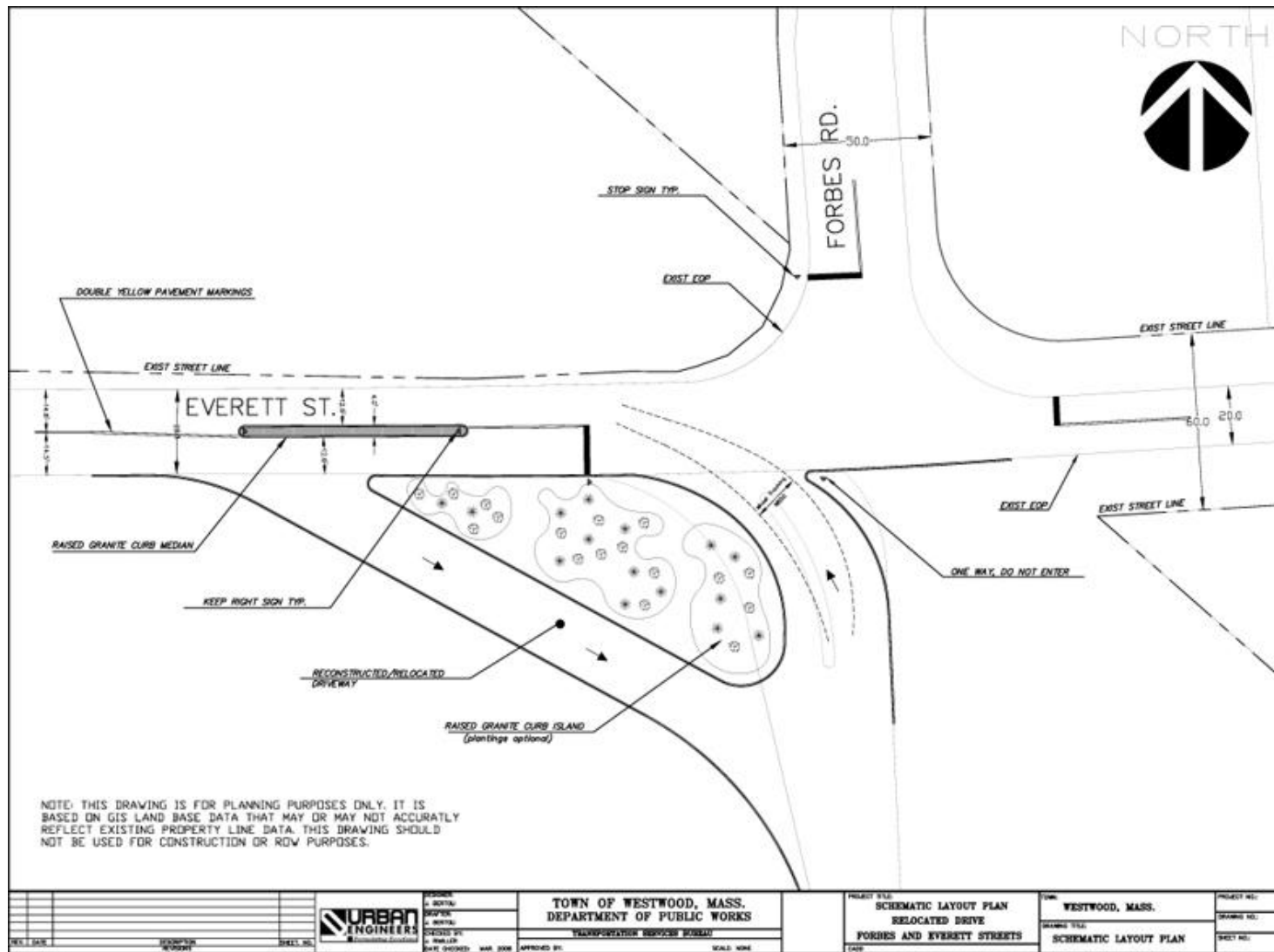


Forbes at Everett



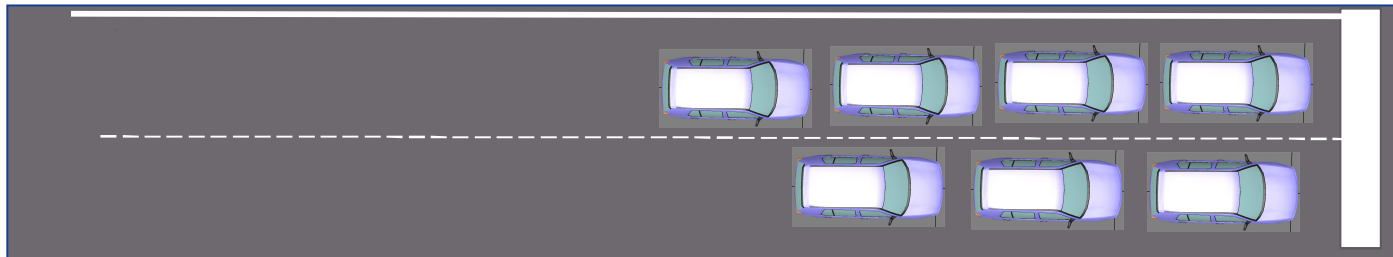


Forbes at Everett



Existing Conditions

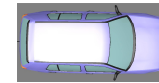
Traffic



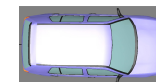


Simulation Modeling

What is Simulation Modeling?



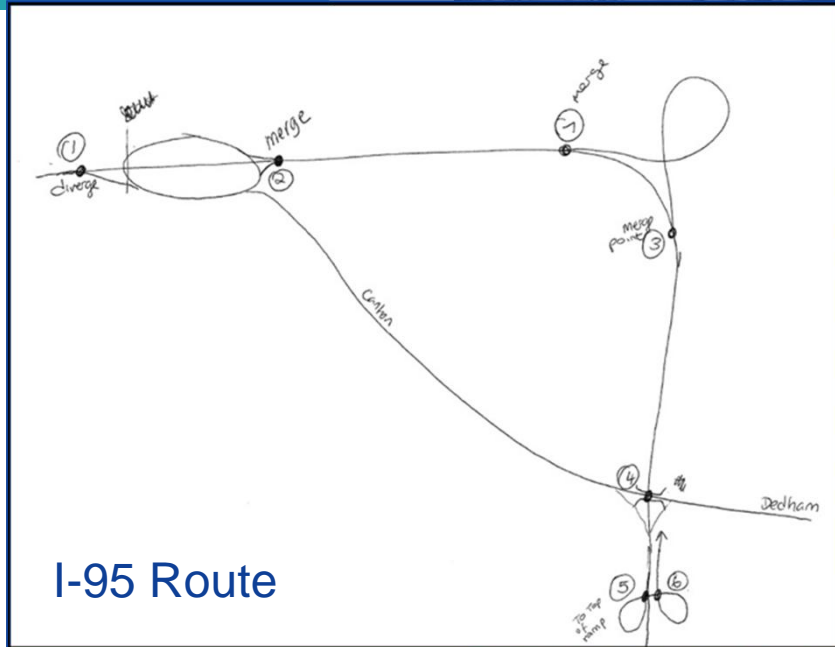
And how will it help us?



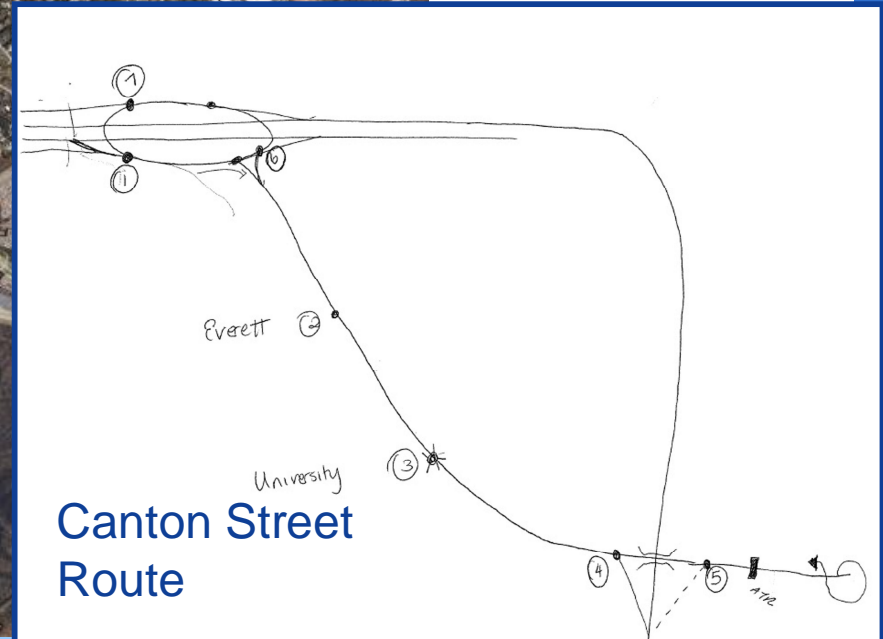
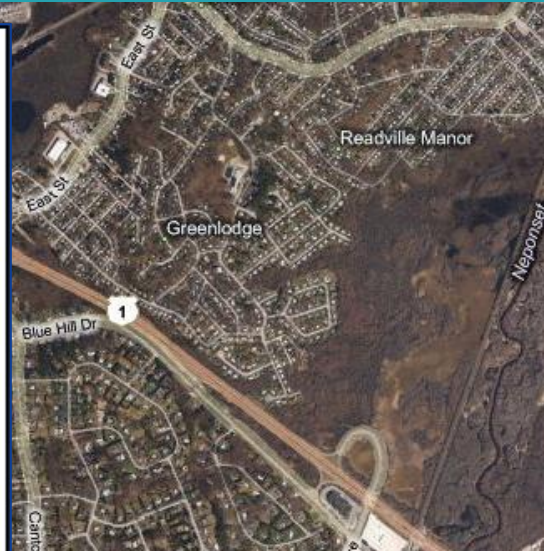
Simulation Modeling



Canton St Travel Time Data



I-95 Route



Canton Street Route



AM Peak Travel Times



Existing Travel Time

Northbound Travel Time (seconds)

Route	6-7	7-8	8-9	9-10	10-11
Canton St	302	473	460	306	298
I-95 (April)	307	386	439	271	283
I-95 (May)*	483	1077	924	455	249

**Construction on I-95 Northbound*

Southbound Travel Time (seconds)

Route	6-7	7-8	8-9	9-10	10-11
Canton St	276	275	303	290	268
I-95 (May)	202	205	212	203	206



PM Peak Travel Times



Existing Travel Time

Northbound Travel Time (seconds)

Route	2-3	3-4	4-5	5-6	6-7
Canton St	320	312	345	365	299
I-95 (May)*	234	307	260	224	224

**Construction on I-95 Northbound*

Southbound Travel Time (seconds)

Route	2-3	3-4	4-5	5-6	6-7
Canton St	295	320	351	344	284
I-95 (April)	212	221	238	232	216
I-95 (May)	237	329	308	367	249



Simulation Model Validation

AM Peak Travel Times - Canton/Dedham St (May 2008)			
Direction	Route Segment	Field Travel Times (s)	SimTraffic Travel Time (s)
Southbound (8AM-9AM)	Rotary to Everett St	130	123
	Everett St to University Ave	96	118
	University Ave to I-95 On-Ramp	61	89
	I-95 On-Ramp to Proposed Off-Ramp	16	9
	Total	303	339
Northbound (8AM-9AM)	Proposed Off-Ramp to I-95 On-Ramp	15	15
	I-95 On-Ramp to University Ave	122	152
	University Ave to Everett Street	94	94
	Everett St to Rotary	204	216*
	Total	435	477

* Rotary was not simulated. Recorded NB delay at Rotary was added to Simulated travel time



Simulation Model Validation

PM Peak Travel Times - Canton/Dedham St (May 2008)			
Direction	Route Segment	Field Travel Times (s)	SimTraffic Travel Time (s)
Southbound (4:45-5:45PM)	Rotary to Everett St	127	131
	Everett St to University Ave	205	230
	University Ave to I-95 On-Ramp	52	63
	I-95 On-Ramp to Proposed Off-Ramp	14	9
	Total	398	433
Northbound (4:45-5:45PM)	Proposed Off-Ramp to I-95 On-Ramp	14	9
	I-95 On-Ramp to University Ave	90	74
	University Ave to Everett Street	83	91
	Everett St to Rotary	171	177*
	Total	358	351

* Rotary was not simulated. Recorded NB delay at Rotary was added to Simulated travel time

Travel Times for Example Traffic Calming Treatment



Travel Times



- Stop sign for Northbound Canton Street
- Realigned Blue Hill Drive

Travel Times between Rotary and Everett

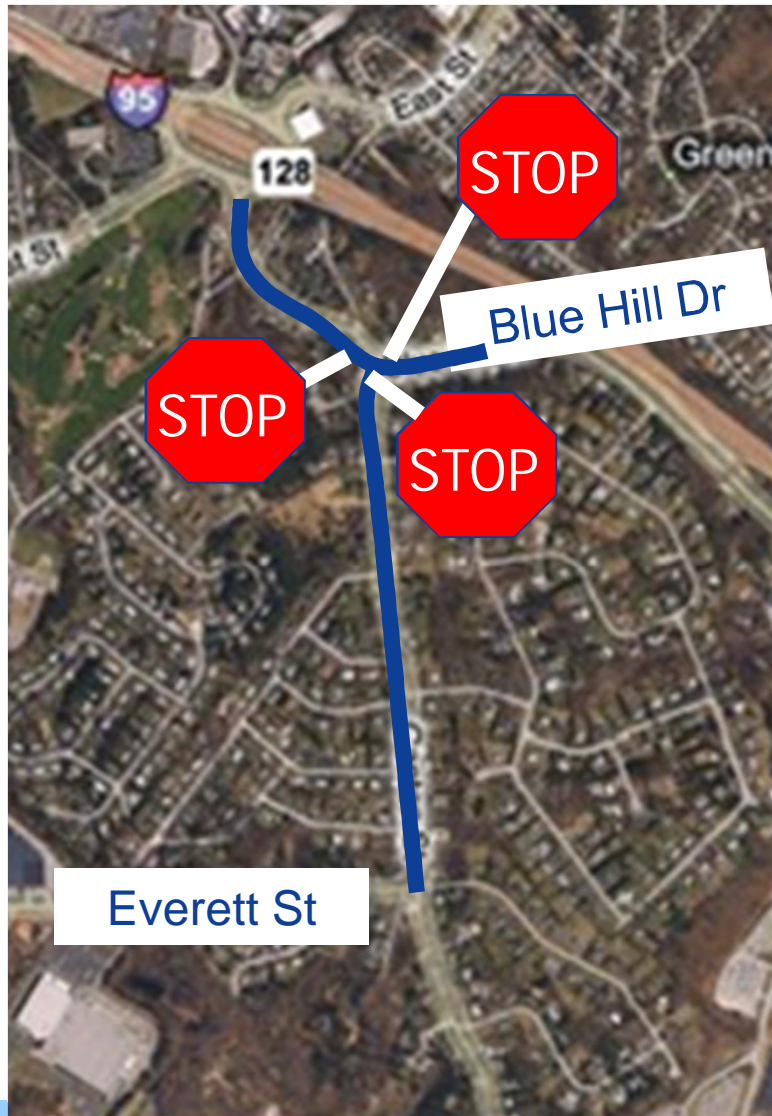
AM Travel Time (seconds)

Rotary to Everett St.	Existing	With TC	Diff.	% Diff.
Northbound	216	236	30	9%
Southbound	123	132	9	7%

PM Travel Time (seconds)

Rotary to Everett St.	Existing	With TC	Diff.	% Diff.
Northbound	177	212	34	20%
Southbound	131	141	10	7.6%

Travel Times



•All-Way STOP

•Realigned Blue Hill Drive

Travel Times between Rotary and Everett

AM Travel Time (seconds)

Rotary to Everett St.	Existing	With TC	Diff.	% Diff.
Northbound	216	227	61	28%
Southbound	123	137	14	11%

PM Travel Time (seconds)

Rotary to Everett St.	Existing	With TC	Diff.	% Diff.
Northbound	177	193	16	9%
Southbound	131	165	34	26%



Next Steps

Model
Review

Mobile
Workshops

Design

Build

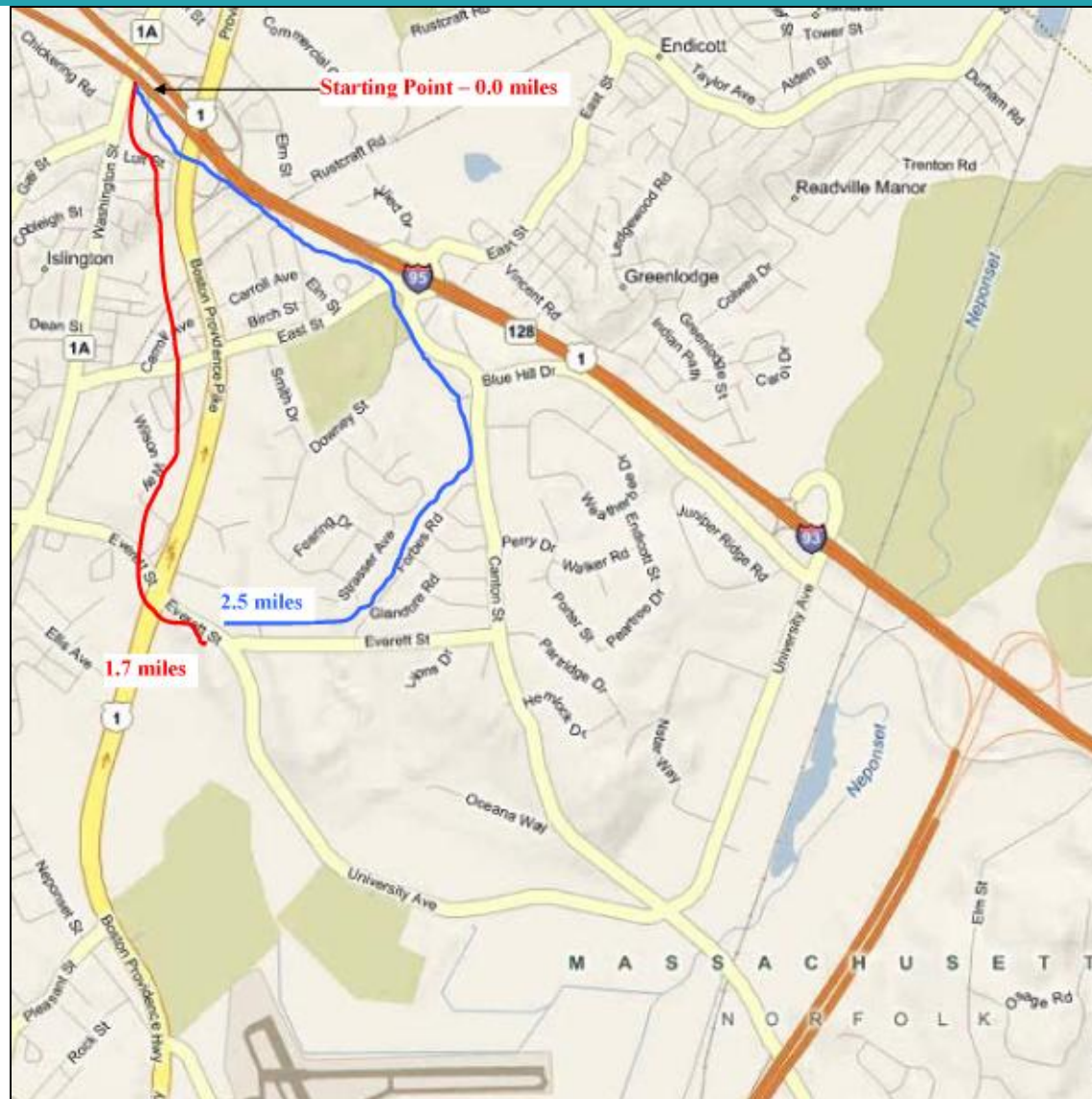
July

August

Fall '08

Spring '09

Canton/Forbes vs Route 1





Westwood Traffic Calming

Advisory Committee Update



Thank You

