

Steps to Properly Dispose of Yard Waste in Westwood

2018 Leaves/Yard Waste Pickup Nov. 12, 19, 26 and Dec. 3rd

During yard waste weeks, your yard waste will be picked up on your regular trash day. Please have your bags out by 7am.

Yard Waste consists of grass clippings, leaves and twigs. No large limbs or branches will be collected.

Leaves MUST be placed in paper leaf recycling bags or loosely in barrels that are clearly marked "leaves." Do not put yard waste in Westwood recycling or trash barrels.

Barrels and bags shall not exceed 45 pounds. Anything in excess of 45 pounds will not be collected.

NO plastic bags can be collected with

yard waste, as they will cause the entire truck load to be rejected at the composting site.

Place barrels /bags curbside by 7am on your trash pickup day. Waste Management has until 5 pm to pickup

Missed Pickup. If your leaf bags were out by 7am on your regular trash day and not picked up by 6pm call the DPW at 781-251-2587 or email within 24 hours, and we will schedule a pickup with Waste Management. We cannot schedule yard waste pickups after the scheduled collection week has ended.

The Town does not pick up brush, branches, and limbs unless they fall from a public tree. Please call the Westwood Fire Department at

781-326-3885 for more information on private burn permits.

You can also call a local contractor in your area for information on removal and disposal.

If you have excess yard waste or miss town pick up, you may bring your yard waste to South Ridge Farm and Nursery (400 South Walpole St., Walpole) for a small fee. Call for more information on pricing and what they accept. 508-668-0401

Compost Bins

The Town has compost bins available for resident purchase. Each bin is \$35 and can be purchased at 50 Carby Street, Monday through Friday from 7am to 3pm.

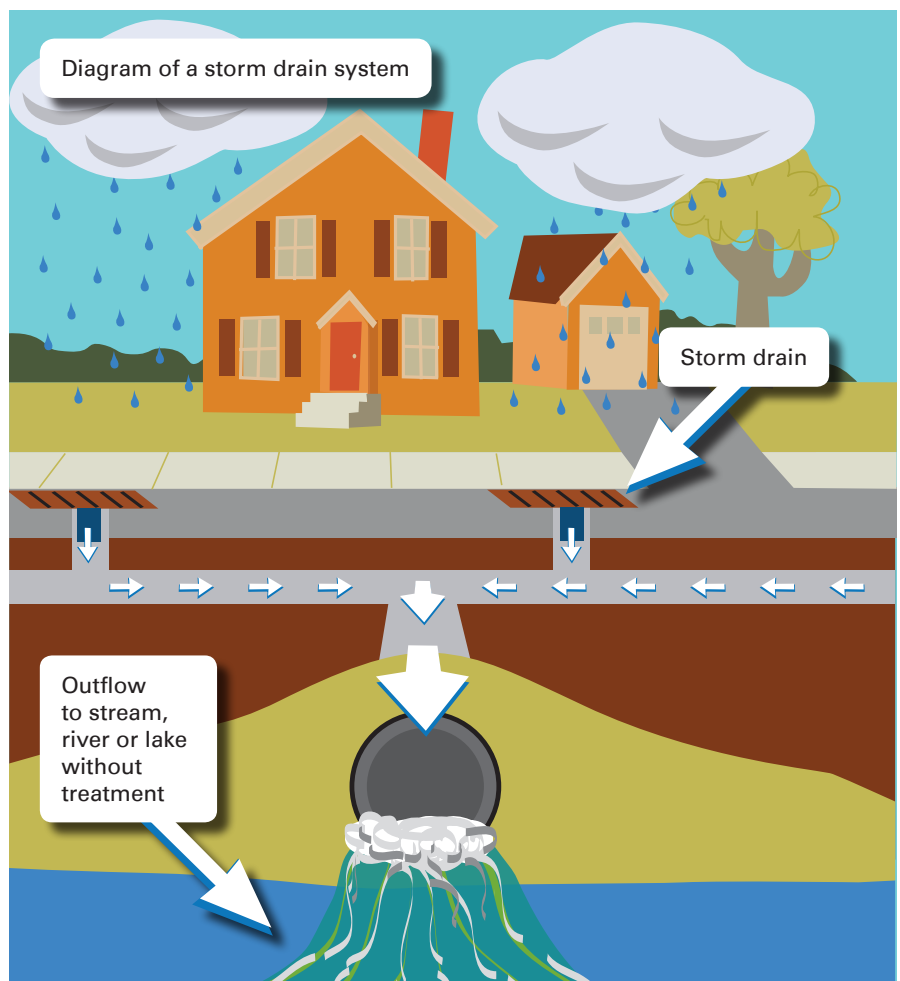
Working Together to Prevent Stormwater Pollution

Many towns in Massachusetts are covered with acres of pavement and concrete.

When rain hits these hard surfaces, it washes pollutants like pet waste, bacteria, oil, litter, fertilizer, and grass clippings into storm drains, which then lead directly to local waterways.

Water that flows into storm drains is NOT treated—and pollutants on the street flow directly into streams and ponds, affecting the health of drinking water, wildlife and recreation.

Your town is working towards cleaner waterways by participating in the Neponset Stormwater Partnership (NSP), which offers resources to help eliminate water pollution that comes from paved surfaces. In addition, the U.S. Environmental Protection Agency has recently released new stricter water pollution regulations that we are committed to meeting.



Call the NSP Stormwater Hotline (781) 575-0354 x300 or the Westwood DPW (781) 326-8661 with stormwater questions, or to report dumping. For more info. on stormwater prevention, go to www.YourCleanWater.org.

Help Keep Westwood's Water Clean This Fall

Leaves and grass clippings that are dumped or stored near waterways or paved areas add to water pollution.

Did you know that fallen leaves and grass clippings are loaded with phosphorus?

When streams, rivers, and ponds receive too much phosphorus, harmful algae and cyanobacteria blooms can occur. These blooms are unsightly and can be toxic to people, pets, and wildlife.



Keep your local waterways clean and healthy with a few simple steps.

- Place raked leaves or lawn clippings in paper bags to be collected by the town.
- Consider composting yard waste.
- Keep paved areas and stormdrains clear of leaves.
- Keep bagged, piled and mulched leaves on natural soil, a few feet back from paved areas.
- Ensure that your lawn service is properly disposing of yard waste.
- Reduce excessive lawn chemical use and always follow manufacturer's directions.



Learn more at www.YourCleanWater.org



The Neponset Stormwater Partnership (NSP) is a program managed by the Neponset River Watershed Association on behalf of ten member communities. NSP aims to increase the effectiveness of municipal stormwater management programs through regional cooperation and resource sharing.