



WESTWOOD

A COMMUNITY NEWSLETTER

Winter 2011

Volume 24 Number 2

Long Range Financial Planning Committee Continues Work on Important Future Needs

In the fall issue of the Town's Newsletter, the Long Range Financial Planning Committee (LRFP) provided an overview of several important long term issues facing the Town. Now, in each subsequent quarterly edition, the LRFP committee plans to include highlights of one of those issues, beginning with capital budgeting.

Capital Budgeting

The Town's physical resources are a major component of the Town's overall financial assets and represent a significant investment of public funds. The Selectmen and LRFP are committed to reinvesting in the community's capital infrastructure. As such, the Town must adequately maintain and update its capital assets.

Each year, the Town produces a Five-Year Capital Improvement Plan; a five year projection of capital needs for maintaining and upgrading the Town's physical plant. It provides detailed information concerning those capital

requests for the upcoming fiscal year, summary information for the following four fiscal years is provided to identify current projections of what level of capital outlay will be required in future years, and detail on what spending has occurred in the previous years. The LRFP Committee was the force behind creation of the plan.

The focus now is to concentrate annual capital towards important annual maintenance and upgrading of Town and school facilities.

The Town has also established capital financial policies, which serve as guidelines as to appropriate levels of capital spending. More detailed information on the Town's capital plan is available in the five year capital book on the Town's web site.

continued on page 4

Being Prepared for Emergencies

In light of the loss of power during Hurricane Irene and more recently the unconventional snowstorm on October 29 and 30, 2011, the Westwood Emergency Management Team would like to remind residents of the importance of emergency preparedness. Residents are encouraged to prepare themselves and their families for emergencies. Planning ahead will give you peace of mind and can keep your family and friends safe. There are a range of

possible emergencies, like hurricanes and blizzards that are especially likely in New England. The following information may help you prepare for such events:

- Have an emergency plan for your family. Plan how your family will contact each other and where you will meet, in the event you are separated.
- Have a first aid kit with health products and prescription medications for family members.

continued on page 8

INSIDE THIS ISSUE	2	Did You Knows...	6	Rainbow Profile	10	February Vacation Recreation News	13	New Year's Eve Fireworks!
	3	News from the Town Clerk	7	Westwood Early Childhood Council Rotary Club Upcoming Events	11	Local Resident Involved in International Education	14-15	WECC Preschool Scholarship School News!
	4	Firefighter Xmas Tree Sale	9	Westwood Day Fundraising Kickoff!	12	Dedham Savings Holiday Programs Hale Reservation HOLA Program	16	Library Events Town Bulletin Board
	5	Where In Westwood...						

The newsletter is also available online at <http://www.townhall.westwood.ma.us/>

Did You Know...

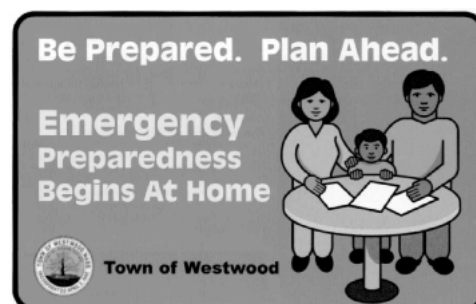
- The **Westwood Community Blood Drive** will be held on Saturday, January 14, 2012 at the Westwood Masonic Building, 655 High Street (across from the Library) from 9:00 a.m. to 3:00 p.m. Reserved parking will be available for all donors, and a homemade breakfast will be served! Make an appointment by calling 1-800-REDCROSS, or visit www.redcrossblood.org/. Walk-ins are also encouraged, especially in the afternoon.
A few minutes of your time could save someone's life. It may be the most important thing you do all year!
- **The Friends of the Westwood Library** will hold a *Series of Special Saturday Book Sales* beginning on January 21, 2012. The sale will take place at the Main Library's lower meeting room from 10:00 a.m. until 2:00 p.m. Other sale dates will be February 25 and March 24. The Friends will offer a selection of new and gently used books, compact discs and DVDs. This popular library fund raiser is well-known for its great bargains – don't miss it!
Due to library construction the usual mid-March sale will not be held this year.
- Did you know that residents have winter parking rules? Residents are reminded about winter months vehicle parking per the Town General By-Laws:
§380-11. Overnight Parking during winter months.
It shall be unlawful for the owner or operator of any vehicle, other than one acting in an emergency, to park said vehicle on any public street or place where the traveling public has the right of access between the hours of 2:00 a.m. and 5:00 a.m. of any day during the period of December 1st through March 31st.
§380-11.2. Snow and Ice Emergencies
 - A. In order to facilitate the safe and orderly snow clearing operations, The Emergency Management Director may declare a Snow or Ice Emergency based on existing or expected weather conditions.
 - B. During a Snow or Ice Emergency all parking on Town roads is prohibited.
Vehicles parked on Town roadways in violation of the ban may be ticketed and/or towed at the owner's expense.
 - C. When possible, advance notice will be sent out through various media electronic means, including posting on the town's website:
www.town.westwood.ma.us/.

- Did you know that in light of Hurricane Irene and the unconventional snowstorm on October 29, 2011, the Town of Westwood is recruiting volunteers for the **Medical Reserve Corps (MRC)** and the **Community Sheltering Team**?

The *MRC* is a group of qualified and dedicated medical and non-medical professionals that live in the community and are committed to assisting the town during a public health emergency. Members participate in drills and exercises and help staff the annual flu clinics. Training and educational opportunities are additional benefits to becoming a volunteer. It's also a great way to meet fellow residents and gain a sense of civic pride in serving the Westwood community in such a meaningful capacity. Applications are available on the Board of Health webpage at www.townhall.westwood.ma.us/.

The *Community Sheltering Team* members will be asked to help set up and staff the Town's shelter if it is opened for residents. Westwood's shelter is certified by the American Red Cross (ARC) and is located at the Westwood High School gymnasium. For localized emergencies, the ARC will open and manage our shelter if called upon to do so. If several communities need shelters opened at the same time, or if the ARC cannot provide enough volunteers, some communities will be left without shelter services. The Sheltering Team will be activated when the Town determines the need to open the shelter. Team members must be physically fit and must be willing to respond to help open Westwood's shelter or help the American Red Cross open and manage our shelter if necessary.

If you would like to become a member of Westwood's Medical Reserve Corps or the Community Sheltering Team please call Linda Shea at the Westwood Health Department at 781-320-1026 or 781-320-1027, or email her at mrc@townhall.westwood.ma.us.



For more information and suggestions, see page 8.

News from the Town Clerk

Dog Licensing Begins December 1st

A reminder that the new year will bring expired licences to dog owners. Dog licensing will begin for 2012 on December 1, 2011 and end on January 31, 2012.

Failure to license your dog on or before January 31, 2012 will result in a fine of \$25.00, per town bylaws §184-10,B.(1)

You may license your dog by mail, provided you include a copy of a current rabies certificate. If you are licensing your dog for the first time, proof of spay or neutering is also required.

Kennel owners are required to apply for a special permit, per zoning bylaw § 4.339, before you will be able to obtain a license.

Licensing fees are as follows:

Dogs not Neutered or Spayed:	\$15.00
Dogs Neutered or Spayed :	\$10.00
Kennel with up to four dogs:	\$30.00
Kennel with Five to Nine Dogs:	\$50.00
Kennel with 10 Dogs or more:	\$100.00

Annual Town Census Reminder

The Annual Town Census will be sent to each household on or before January 1, 2012. It is extremely important that you fill this out and return it within 10 days of its receipt. Failure to return the Census may cause a voter to be designated as inactive on the voting list (M.G.L, Ch.51, § 4).

Busy Election Year in 2012

The following Elections will be taking place in 2012. It will be a busy year.

March 6, 2012	Presidential Primary
April 24, 2012	Annual Town Election
May 7, 2012	Annual Town Meeting
September 6, 2012	State Primary
November 6, 2012	State Election



Some FYIs Regarding Voting

Who may register?

Only a person who is:

- a US citizen, and
- a resident of Massachusetts, and
- 18 years old on or before election day (must still meet registration deadlines set forth below)

How can I register to vote?

By Mail: To obtain a mail-in registration form you may contact the Town Clerk's office at 781-320-1013 or 781-326-3964 and a form will be sent to you or you can download a 'National Voter Registration' form (www.eac.gov/voter_resources/register_to_vote.aspx). Mail the completed form to the Town Clerk's office, 580 High Street, Westwood, MA 02090. You should receive a confirmation notice within a week. If you do not, please contact our office to verify your voting status.

In Person: Go to the Town Clerk's office and complete an affidavit of registration, which must be answered truthfully under the penalty of perjury. The questions on the affidavit will include your name, residence and date of birth.

At the Registry of Motor Vehicles: Keep your motor voter receipt until you receive confirmation from your local election official. If you do not receive any confirmation, please contact your local election office to verify your voting status.

When and where may I register?

There is no waiting period to be eligible to register to vote. If you move, you may register to vote as soon as you move into your new home.

Registration forms are available in the Town Clerk's office.

Long Range Financial Planning – continued from page 1

Capital projects can be financed in a number of ways. An appropriate balance of financing options is important to maintain an ongoing program and limit the community’s risk. Westwood has continued to utilize a mix of pay-as-you-go financing, combined with prudent use of debt financing. This mix has provided the resources for capital over the last several years.

A Look at Recent Capital Project Financing

	FY09	FY10	FY11	FY12
Tax Revenue	\$573,000	\$123,000	\$123,000	\$123,000
Free Cash	\$700,000	\$760,000	\$700,000	\$700,000
Borrowing Within Proposition 2½	\$3,500,000	\$150,000		\$910,000
Exempt Debt			\$9,300,000	
Sewer Enterprise Funds	\$484,000	\$265,000	\$245,000	\$160,495
Sewer Enterprise Borrowing				
Other Sources		\$150,000		

Over the last ten years, the Town has made major investments in new buildings including the Martha Jones, Downey, Middle, and High Schools, the municipal Carby Street building as well as improvements to the High School fields.

The Town’s assets, including school and municipal buildings, roadways and sewer, vehicles and equipment are valued at over \$140 million. We should properly maintain these assets and not defer maintenance, which delays problems for future generations and increases costs. Economic conditions and difficult budget years can make it challenging to properly fund capital, while balancing operating budget needs.

...the school and municipal capital budgets have been level funded which has been an inadequate amount of capital spending...

The focus now is to concentrate annual capital towards important annual maintenance and upgrading of municipal and school facilities. It is also vital to ensure that Town departments have proper equipment to provide for safe and efficient operations and delivery of services. The LRFP supports a comprehensive capital financial plan, which would ensure the sufficient maintenance of the Town’s assets.

In recent years, the school and municipal capital budgets have been level funded, which has been an inadequate amount of capital spending and is at less than half the level recommended by the Town’s financial policies. The overall expenditure on capital and maintenance of the Town’s assets needs to increase. Currently, annual appropriations on ongoing equipment and maintenance projects are \$823,000, approximately ½ of the target of annual spending of \$1.5M.

In FY12 and FY13, opportunities exist to increase capital spending due to the retirement of previous debt. The Town could issue new capital bonds to fund additional capital expenditures. The LRFP strongly recommends the Town pursue these options.

In addition, any one time revenue or a portion of new tax revenue from new commercial development should be dedicated to capital financing. This would also provide for a long term, consistent method of funding necessary capital improvements and maintenance.

We look forward to working with the Selectmen and the community to continue to move forward on helping the Town increase the level of capital spending to protect and properly maintain the Town’s infrastructure and capital equipment.

Westwood Permanent Firefighters Association

First Christmas Tree and Wreath Fundraiser!

Where: Islington Tennis Courts

When: Now until Saturday, Dec. 24th
 Mon-Fri 5 p.m. to 9 p.m.
 Saturday 9 a.m. to 8 p.m.
 Sunday 10 a.m. to 6 p.m.



Your Feedback, Stories, Events, Suggestions, News Items Wanted!

The next quarterly newsletters are due to be delivered to homes on or about March 15, June 15 and September 15, 2012. Please submit articles for consideration 6 weeks prior to the expected delivery dates.

Please send any submissions, suggestions, observations, or feedback of any kind to:

Diane Thornton, Editor
 Westwood Community Newsletter
 580 High Street, Westwood, MA 02090

or *email:* newsletter@townhall.westwood.ma.us

Town Clerk's Office: FYIs – *continued from page 3*

What must I do if I've changed my address since I registered?

If you have moved within the same city or town, notify your local election office of your new address in writing. If you have moved to a new city or town, you must register again.

Can I register to vote before I turn eighteen?

Yes, as long as you will be 18 on or before the next election or town meeting. However, please note that you must still register by the deadline for that meeting or election.

Are there deadlines for registration?

Yes. In order to vote in a specific election or town meeting you must be registered:

- 20 days before all primaries and elections, and/or
- 10 days before a town meeting.

Do I need to attach identification to my voter registration form?

Yes, if you are registering to vote for the first time in Massachusetts. Because of a new federal law, the Help America Vote Act of 2002 passed by Congress, if you registered to vote by mail on or after January 1, 2003, you will be required to show identification when you vote for the first time in a federal election since registering by mail in 2003, or you can send in a copy of your identification with your voter registration form.

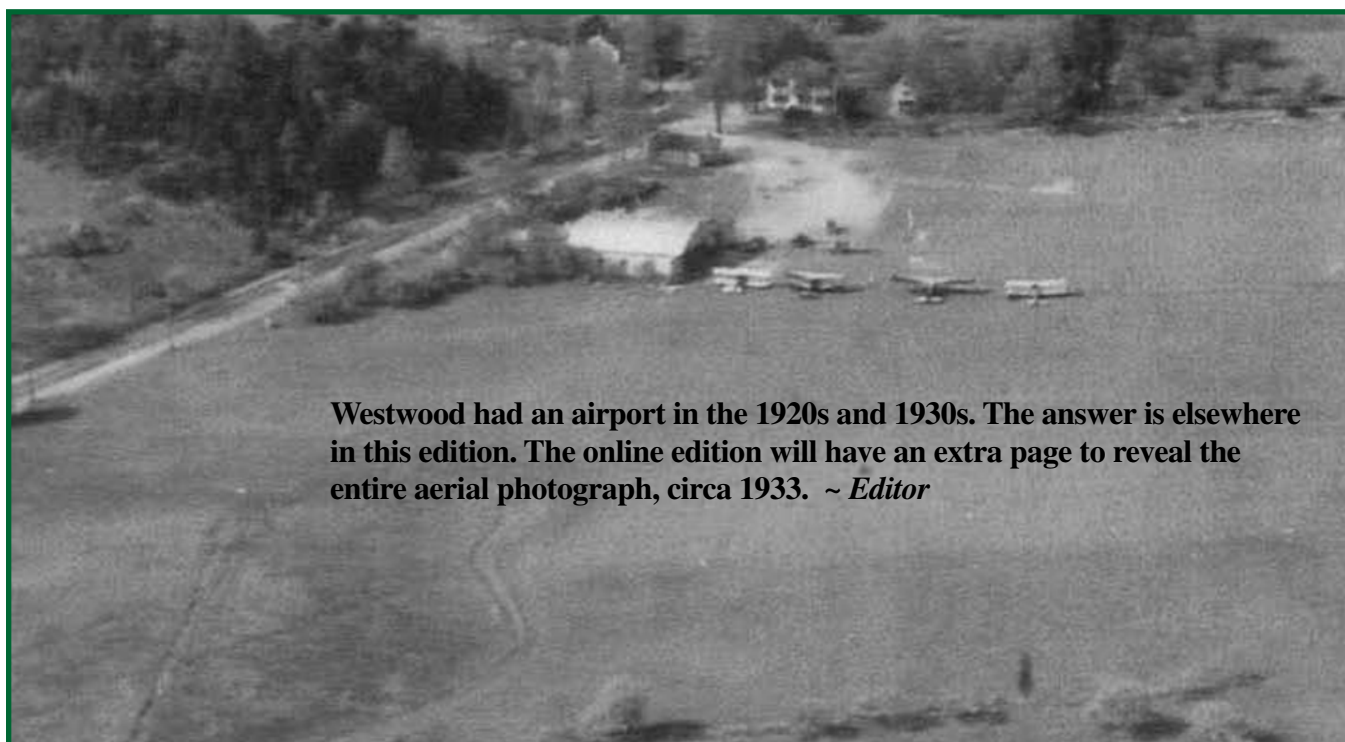
Acceptable identification must include your name and the address at which you are registered to vote, for example: a current and valid driver's license, photo identification, current utility bill, bank statement, paycheck, government check, or other government document showing your name and address. If you send in a copy of your identification with your mail-in voter registration form, it may not be returned to you.

If you do not provide such identification, the Help America Vote Act of 2002 requires that you may only cast a provisional ballot which will be counted later, but only after your eligibility to vote has been determined.

What should I do if I registered to vote and I have not heard from my local election official?

If you have NOT received confirmation of your voter status from within one week from the date you registered, contact the Town Clerk's office to verify your voting status at 781-320-1013 or 781-326-3964.

Where in Westwood...**was** this?



Westwood had an airport in the 1920s and 1930s. The answer is elsewhere in this edition. The online edition will have an extra page to reveal the entire aerial photograph, circa 1933. ~ Editor

RAINBOW PROFILES: Celebrating the Cultural Diversity of Westwood

(Rainbow Profiles is a series of articles based on interviews conducted by the Westwood Human Rights Committee with Westwood residents who display the richness and cultural diversity of the Westwood community.)

Have a Little Faith

By Barbara Shea

It is noteworthy that in the world today, much of the conflict that exists springs from religious intolerance. For over forty years, the Westwood Interfaith Council (WIC) has sought to raise awareness and promote acceptance of different belief systems among residents. In the spirit of the intent of the Rainbow Profiles, this piece

Thus was born the Westwood Interfaith Council, whose purpose is “to enable the religious congregations of Westwood to enjoy, exercise and express their spiritual heritage through voluntary cooperation in worship, study and community service.”

aims to provide more information and access for the community to this organization and its members.

There were more cows than people when John Pritchard was born in Westwood in 1936, not quite forty years after the town was established in 1897. John is a member of Westwood High School (WHS) class of 1955.

We met one fine fall

afternoon to talk about the Westwood Interfaith Council, of which he is this year’s president.

Arriving to the role by way of his lifelong engagement in the St. Margaret Mary’s parish, John is also quite active in the Westwood Historical Society. Not surprising, since he personally experienced most of the history of the town. John remembers when, in 1982, a new minister at the First Parish Church, Ted Fritsch, brought with him from Maine the idea of connecting all faith groups in town. Thus was born the Westwood Interfaith Council, whose purpose is “to enable the religious congregations of Westwood to enjoy, exercise and express their spiritual heritage through voluntary cooperation in worship, study and community service.”

The group is comprised of the six congregations that have houses of worship in town (St. Denis, St. Margaret Mary, First Baptist, First Parish, St. John’s Episcopal and Temple Beth David) and a representative from the Christian Science and Muslim faiths. Its Thanksgiving Service of Covenanting, which alternates among the

various houses of worship each year, is an interfaith service open to the entire community. The service is held each year on the Sunday evening preceding the Thanksgiving holiday as a celebration of thanks with emphasis on those elements that all faiths share in common. The choirs of all of the congregations sing together throughout the service.

Each faith group is allowed up to five members on the council but only one vote per congregation. All members of the clergy meet regularly in addition to the quarterly meetings of the WIC. Rabbi Jeffrey Wildstein, Temple Beth David’s current rabbi, said that “the relationships between the houses of worship in Westwood are outstanding,” a fact that struck him when he first arrived in town to take the helm from Rabbi Henry Zoob, who had held that post from 1970 to his retirement in 2006. “The clergy are all friends, meeting monthly to share common concerns. We are there for each other” noted Rabbi Wildstein.



John Pritchard, lifelong Westwood resident and President of the Westwood Interfaith Council.

It was a sad day for the town when in 1987 Temple Beth David was burned to the ground. In the aftermath of that disaster, the Interfaith Council provided financial

continued on page 12

Westwood Early Childhood Council — A super lineup of events! Get your pencils ready!

Families with Infants Program: For babies birth to 12 months and their parents

Do you have a new baby? Know someone who does? Are ready to meet other families with infants?

All families with infants are invited to join an informal conversation with Parent Volunteer Leader Erin Hayes on the joys and challenge of a new baby in the family! Each session will also feature a speaker on related topics. Feel free to drop in late. Eating, sleeping, and crying are all welcome!

Co-sponsored by Westwood Early Childhood Council and Youth & Family Services at the Islington Community Center (ICC), 288 Washington St. Use ramp entrance.

Mondays, 10:30-11:30 a.m. – January 23, February 13, March 12, April 9, May 14

For information & registration contact: Carol Craig-O'Brien • 781-461-9548 • cobrien@westwood.k12.ma.us

Save These Dates! Family Activities for Winter 2012

Westwood Early Childhood offers a variety of educational activities for young children and their families. Programs are offered free for Westwood residents. Registration required.

Barn Babies at the Pool Lobby

Friday, January 20th

3 sessions: 10:00 a.m., 10:30 a.m., and 11:00 a.m.

Families with Infants – Youth & Family Services at the ICC.

Mondays, 10:30-11:30 a.m.

January 23, February 13, March 12, April 9, May 14

Music Music Music with Tina Stone – Senior Center

Mondays 10:00-11:00 a.m.

January 9, February 6, March 5, April 2

Let's Dance at Savaria Studios, Rte. 1, Norwood

Tuesdays, 10-10:45 a.m.

January 17, February 7, March 6, April 3, May 1

Walk, Talk and Read with the Westwood Library

Tuesdays, 10-10:45 a.m.

March 20, April 10, May 15

Family Play Group – Westwood Public School Integrated Preschool

Wednesdays, 10:00-11:30 a.m.

January 11, February 8, March 14, April 4, May 9

Toddlers it's Playtime! – Temple Beth David

Thursdays, 10:00-11:00 a.m.

January 19, February 16, March 22, April 12, May 17

Westwood Sings: An Intergenerational Music Program – Senior Center

Thursdays, 10:00-11:00 a.m.

Mar 1 – *Mackseedoodle*

Apr 5 – *David Polansky*

May 7 – *Tunes n Tales*

Celebrate Reading Storytime – Pool Lobby

Fridays 10-11 a.m.

January 13, February 3, March 2, March 30, May 4

Saturday Active Gym Play – Deerfield School

Saturdays two sessions 10 a.m. and 11 a.m.

January 7, February 4, March 3, May 5

For information & registration contact: Carol Craig-O'Brien • 781-461-9548 • cobrien@westwood.k12.ma.us

These programs are funded through the Community Family Engagement Grant: MA Department of Early Education and Care, Westwood Early Childhood Council, and Westwood Young Women's Club.

continued on page 13

Rotary Club of Westwood — A review and 2012 Save the Dates to add to your calendars!

The Rotary Club of Westwood held a very successful Recycling Event in October at the First Baptist Church in Westwood. The Westwood High School Golf Team assisted the club in unloading computer equipment, laptops, microwaves, televisions, washers, dryers, refrigerators, grills, lawnmowers, etc. from the cars of residents. The Rotary Club would like to thank the Golf Team, First Baptist Church, and those that brought their recycling for helping to make this community event so successful. All items taken will be taken apart and all the parts will be recycled. Funds raised help the club to support its scholarship program.

April 1 Annual Pancake Breakfast

Join us on April 1st for our Annual Pancake Breakfast at the Westwood High School from 8:00 a.m. to noon.

Visit with the Easter Bunny as you enjoy pancakes, sausage, juice, coffee, and milk.

April 28 Recycling Event

Start your Spring Cleaning because the Club will be holding another Recycling Event on April 28, 2012 from 9:00 a.m. to 2:00 p.m. at the First Baptist Church. The price will be \$30.00 per carload, excluding televisions.

Televisions will be weighed and priced at fifty cents per pound.

Emergency Preparedness – continued from page 1

- Have an evacuation kit packed with supplies ready in the event that you must leave home quickly. Pack lightly and include basic supplies for 24-48 hours.
- If you have cordless phones, cable or FIOS, you will lose you phones and internet during a power outage. In order to receive the recorded messages from the Police Department, you should register all your phone numbers with the Town's Connect CTY System, (<https://www.westwoodpd.org> – Forms, Permits and Applications – Online Forms – Connect CTY Form) or School Department (register your email address and cell phone number with the secretary at your child's school).
- Consider investing in a cell phone. If you have a cell phone, keep it charged. You can charge your phone with a car phone charger, an emergency phone charger, or at a public building that has emergency power.
- Freeze empty soda bottles and keep them in your freezer to help keep your food safe if the freezer is without power. Make sure you have food staples in your home. Do not purchase large quantities of

perishable foods right before a storm to avoid loss if the power goes out.

- Make sure you have fresh batteries for flashlights, carbon monoxide alarms and smoke detectors. If you have a generator, make sure to follow the manufacturer's directions on the safe operation of the unit. Use caution with candles. Consider purchasing battery operated candles.
- Make sure you know how to operate your fireplace; consider having it cleaned on a yearly basis.
- Contact friends or family that may have power to see if you can keep warm with them. Westwood's High School serves as the emergency shelter. You should call or go to the Police Station to report any need for a shelter and to see if and when it will be opened.

Be Prepared. Plan Ahead. Emergency Preparedness Begins at Home. For more information, contact the Westwood Board for Health at mrc@townhall.westwood.ma.us or call the Health Department at 781.320.1026/1027.

Planning ahead for an emergency will give you peace of mind and can keep your family and friends safe. Westwood officials are preparing for a range of possible emergencies, from hurricanes and blizzards to a flu pandemic and acts of terrorism. You can also help. Here are some simple steps you can take to prepare.



Family Communication Plan

Know how your family will contact each other and where you will meet.



First Aid & Tools

Have a first aid kit with health products and prescription medicine.

Food & Water

Have a 2-day food and water supply for each person in your home. Remember individual diet needs and plan for your pets.



Evacuation Kit

Have supplies ready in your car or in a backpack in case you must leave home.

Pack lightly and include basic supplies for 24 to 48 hours.



Review

Every 6 months review your plans and supplies with everyone in your home. Replace expired food, water, and medicine. Update your communication plan.



WESTWOOD DAY

The Date is Set! September 22, 2012

Westwood Recreation is bringing back... *Westwood Day, a Town-Wide event for all ages.*

- Fun Run
- Inflatables
- Arts & Crafts
- Games
- Music
- Entertainment
- Exhibits
- Antique Car Show
- Food
- WHS Football Game
- Fireworks
- Merchants

Want to get involved? With the help from residents, town departments, school department, merchants, and community organizations, seven committees have been established: Fundraising, Facilities, Marketing, Activities, Entertainment, Volunteers, and Merchants. If you are interested in joining a committee or would like to volunteer on the event day please contact Westwood Recreation 781-461-0070 or email recreation@townhall.westwood.ma.us.

Want to Donate? With the help from residents and businesses this event will be spectacular! If you would like to make a donation or sponsor an activity please contact Westwood Recreation at 781-461-0070.



Come Visit Santa!

Saturday, December 10

9:00-12:00

Islington Community Center

\$10 per family

Enjoy hot cocoa and treats while you take your own family pictures with Santa. Please bring your own camera.

Parents, there will be a Santa's Calling form for you to fill out to receive a call from Santa.

Christmas Trees are being sold by The Westwood Permanent Firefighters across the street at Morrison Tennis Courts.

KICK-OFF FUNDRAISERS

All proceeds benefit Westwood Day

Sunday Suppers-Family Style

Sunday, 5:00-6:30 PM

Chiara Bistro, Westwood

Adults \$35 and children \$15 (Pre-registration is required)

January 15

Ravioli with Marinara Sauce, Meatballs and Sausage with Marinara, Caesar Salad, and Garlic Bread.

February 12

Crispy Fried Chicken, mashed potatoes, gravy, coleslaw, and buttermilk biscuits.



News from the Recreation Department

FEBRUARY VACATION!!

www.westwoodma.gov/recreation



Adventure Days

Who: Ages 3-6
Where: Recreation Activity Room
Inst: Marcia Thompson Min: 5 Max: 12

Day	Date	9:00-1:00	1:00-5:00
Tue	Feb 21	\$28	\$28
Wed	Feb 22	\$28	\$28
Thu	Feb 23	\$28	\$28
Fri	Feb 24	\$28	\$28

Enjoy a fun packed day of activities such as: crafts, stories, games, dramatic play, songs, outdoor play, and more. AM and PM participants need to be prepared for outdoor play and need to bring drinks and a nut safe snack. AM participants also need to bring a nut safe lunch.

Dodgeball Tournament



Who: Grades 6-9
When: Tue-Thu, Feb 21-23, 12:00-3:00
Where: Thurston Middle School Gyms
Inst: Mike Griffin and Recreation Staff
Fee: \$60 (3 days) Min: 20 Max: 80

With a thousand and one variations of dodgeball it will be crazy fun! Will it be basketball, doctor, or never ending? Spread the word and sign-up with your friends. Prizes will be awarded. Participants need to bring a nut safe snack and drink. If a day gets canceled, the make-up day will be Friday, February 24.

Fun N' Games

Who: Grades K-6
When: Tue-Thu, Feb 21-23, 9:00-12:00
Where: Thurston Middle School
Inst: Mike Griffin and Recreation Staff
Fee: \$60 (3 days) Min: 20 Max: 60

Participants will choose from a variety of sports, and games. Participants need to bring a peanut/nut free snack and drink. In the event of a cancellation the make-up day will be Friday, February 24.

STAR WARS

Jedi Training Workshop

Who: Ages 5-10
When: Fri, Feb 24, 1:00-4:00
Where: Islington Community Center
Inst: Diane Dinell & Beth Meditz
Fee: \$55 (1 class) Min: 12 Max: 30

May the force be with you....

Are you a Youngling who is interested in becoming a Jedi student in training? It is all about STAR WARS that may include designing and making your own recycled Droid, Making a Training Lightsaber and learning what it is to be a Jedi Knight. Please send your child with a nut-free snack and drink.

Kids Night Out

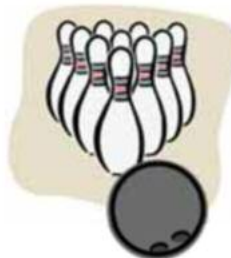
Who: Ages 5-7
When: Thu, Feb 23, 5:00-7:00 PM
Where: Recreation Activity Room
Inst: Marcia Thompson
Fee: \$24 (1 class) Min: 6 Max: 12

Celebrate vacation with an Ice Cream Party and make messy crafts (snow sculptures and more).

Harry Potter LEGO Playland

Who: Ages 5-10
When: Fri, Feb 24, 9:00-12:00
Where: Islington Community Center
Inst: Diane Dinell & Beth Meditz
Fee: \$55 (1 class) Min: 12 Max: 30

Let's build using thousands of LEGOs and Harry Potter LEGO Characters!!! This program is centered around everything Harry Potter and LEGO!! Participants will construct LEGO structures based on their ideas and creativity while having fun with friends. The LEGOs stay with us, but the experience is forever! Each child will go home with a framed picture of themselves with their structure as well as a creative hands-on *magical science experiment* they will experience during the workshop. Please send your child with a nut-free snack and drink.



Winter Excursions



Who: Grades 6-8
Where: Islington Community Center
Inst: Kristin Scoble & Recreation Staff
Min: 10 Max: 13

Day/Date	Trip
Tue, Feb 21	Pinz (Bowling /Arcades) & Pizza Lunch
Wed, Feb 22	Movies & Fudruckers
Thu, Feb 23	Ice Skating & Lunch at Patriots Place

Time	Fee
7:30 – 3:00	\$50
9 :00 – 3:00	\$45
9:00 – 6:00	\$55
7:30 – 6:00	\$60

It's fun, it's exciting, it's your vacation! Sign-up with your friends and take a trip or two. Each day participants will go on a trip, out to lunch and partake in fun activities such as X-Box Kinect, billiards & ping pong at the Basement (Middle AfterSchool Program).

Spectacular Open Swim!

Current membership or \$5 per daily swimmer

- Tue, Feb 21 Open Swim 1:00-2:15
Cannon Ball Contest
- Wed, Feb 22 Open Swim 1:00-2:15
Music Madness
- Thu, Feb 23 Open Swim 1:00-2:15
Poker Chip Pick-up
- Fri, Feb 24 Open Swim 1:00-2:15
Mystery



Musical Theatre Beauty and the Beast

Who: Ages 6-14
When: Tue-Fri, Feb 21-24, 9:00-4:00
Where: Islington Community Center
Inst: SiouxSanna Ramirez-Cruz
Jason Whiting
Fee: \$210 (4 classes) Min: 15 Max: 25

Musical Theatre explores acting, music and dance. Participants work as an ensemble to create a unified vision. Family and friends join us for a final presentation of Beauty and the Beast on Friday. All levels of experience welcome. Please bring a water bottle, nut safe lunch and 2 snacks

Karate Samurai Clinic



Who: Ages 6 and older
When: Feb 21-23, Tue-Thu, 9:00-1:00
Where: Middle School Cafeteria
Inst: Steve DiOrio
Fee: \$165 (3 classes) Min: 8 Max: 50

In this fun and educational clinic, we will explore the traditional martial arts skills from the Samurai of the Sengoku Jidai period of Japanese history. This was the time period that helped inspire the modern mythology of the Samurai. Our "Jidai Knights" program offers not only sword and empty handed skills of the Samurai, but also games and activities that will teach kids the Samurai code of honor, obedience and self-discipline.

Local Resident Involved in International Education

Local resident, Adam Ellis, is helping support public diplomacy in Westwood through a high school international exchange program called EF Foundation for Foreign Study. EF Foundation has been breaking down cultural barriers and enhancing America's image around the world through cultural exchange since 1970. Currently, there are two seniors studying at Needham high school. One is from Germany and one is from Norway. There is also a boy from Italy spending his exchange year at Nipmuc high school in Upton.

Ellis is currently seeking volunteer host families to open their hearts and homes to an exchange student in Westwood. Host families provide a room, board and a caring environment in exchange for a lifelong international friendship, an enriching experience for their family and plenty of opportunities for fun. Ellis is accepting applications online at apps.effoundation.org/.

"I can't wait to share these great students with families in our community," says Ellis. "Having exchange students at our high school will really benefit our kids and the whole community, as well. Imagine being a high school student and making a friend from another country that you share a friendship with for life. It's such a great opportunity."

EF Foundation exchange students take part in an extensive application process and are selected based on their academic achievement, maturity and adaptability. Students accepted to the EF Foundation Program are fully insured, speak perfect English and bring their own spending money.

Since 1979, EF Foundation's dedicated team of local coordinators, volunteers and staff has helped over 100,000 students from nearly 40 countries live and learn in America. EF Foundation's unique combination of local support and global reach has made it the leader in international education and facilitator of high school foreign exchange students.

To learn more about hosting an exchange student or to refer a local family, please contact Adam Ellis at 800-447-4272 (daytime) 305-951-7126 (nights and weekends) or by email at adam.ellis@ef.com.



Adam Ellis (center), with two exchange students.

Dedham Savings

Dedham Savings has had a wonderful fall season visiting our friends out in the community. Here is a short list of the many events we participated in this season: The Westwood Rotary Electronic Recycling Event, Dedham 375th Birthday Bash, First Time Homebuyer's Workshop, Shredding Event, Norwood Day, Needham Business Association's Fall Fair, Neponset Valley Business Expo in Foxboro, Dedham Day and the Charles River Center 5K Run and Walk in Needham.

Now that the weather is getting colder, Dedham Savings would like to invite you inside our Main Office Lobby at 55 Elm Street in Dedham for our 28th Annual Holiday Program. During the week of December 15th to 21st, please consider joining us for live holiday music (local choirs, schools, soloists, etc), hot apple cider and light refreshments.

Our complete performer schedule will be available in all branch locations and on our Facebook page at the beginning of December. Some of our Westwood favorites have already informed us that they are coming, so please mark your calendars. The Westwood Swing Band will be performing on Friday, December 16th from 12:00-1:00 p.m. and the First Baptist Church of Westwood Bell Ringers will join us on Saturday, December 17th from 10:30 a.m.-12:00 p.m. We hope to see you.

For the thirteenth year, our Westwood Branch employees and their customers will be working with Westwood Youth and Family Services to support the Holiday Giving Program for youths in Westwood. Employees and customers are asked to bring unwrapped gifts from the list provided to the Westwood Branch. If you would like to help, please contact Maryanne Carty at Westwood Youth and Family Services at 781-320-1006 or stop by the Westwood Branch of Dedham Savings at 673 High Street.

Happy Holidays!

Hale Reservation — Partners with the Boston Public Schools to help prevent summer learning loss

On November 2, 2011, 10-year-old Jamal Reed, a 4th grader from the Henry Grew Elementary School in Hyde Park, hiked over to Fenway Park in Boston for the American Camp Association's (ACA) First Annual Camp Champions Celebration.

Reed was one of the 44 students who attended Hale Reservation's Hale Outdoor Learning Adventures (HOLA) program this past summer, and articulately spoke at the ACA event about the benefits of the program and his experiences this past summer.

Reed happily described one event when he and his fellow campers made their way to Bear Cave: "We walked for what seemed to have been 50 miles," Reed said to an entertained crowd. "On the way there, I visualized how Bear Cave would look. I also thought I would be able to wrestle a bear. Finally, we reached the cave..."

HOLA is in partnership with Boston Public Schools to help prevent summer learning loss by allowing students from the three schools involved to gain the confidence needed in the classroom. Students enjoy the benefits of nature while they hike the many trails, participate in archery and ropes courses, study wildlife both on land and on the water, and splash around in Noanet Pond.

In his speech, Reed mentioned that if he was not a part of the camp last summer, "[He] would be sitting at home watching television," like so many children with no creative or educational outlet.

Jamal Reed will be graduating 4th grade this spring and, although he would like to attend HOLA next summer, the program is only for rising 4th graders. The hope is that Hale will be able to find the support they need to enhance HOLA so that more children can be involved, and experience Bear Cave and other fun adventures with Jamal.

Hale camper, Jamal Reed, and Eliot Tatelman of Jordan's Furniture, spoke about the importance of camp experiences for children. The event took place at Fenway Park in November.



Rainbow Profiles – continued from page 6

assistance and held a service a few days later at the high school which was attended by over 700 residents. Rabbi Zoob remembers it as a "marvelous, moving event." Demonstrations of support like this, and opportunities for the community to gather in spiritual solidarity, have been the hallmark of the Interfaith Council.

Our town is moving slowly but surely toward acceptance of diverse beliefs, faiths, lifestyles and ethnicities. The Westwood Human Rights Committee is an outgrowth of the No Place for Hate group, founded through the Westwood Interfaith Council in 2003.

Reckoning back to Westwood's early days, this year's President of the Interfaith Council, John Pritchard, notes that Betsy Baker, the wife of Obed, formed the Dorcas Society in 1810. This group, which was started through the First Baptist Church, was a group that 'did good deeds' such as sending food and clothing to Ireland during the potato famine. The Dorcas Society remained quite

active until the 1970s when life got too hectic for the members to sustain the level of commitment such a group entailed. But the Interfaith Council has stepped in to keep the kindness going.

John acknowledges that volunteerism is challenging to sustain in this difficult economy, but he is hopeful that more young people will become involved in the Interfaith Council to "take the ball and run with it." The group established a speaker series in honor of Rabbi Henry Zoob and his wife Barbara and has hosted lectures over the years to promote understanding of various world cultures. John hopes to see more of the same. He notes "there are more similarities than differences between us. Get out and meet your neighbor!"

For information on getting involved with the Westwood Interfaith Council, contact John Pritchard by email at johnpritch@aol.com.

Westwood Recreation New Year's Eve Fireworks!

**Bring in the New Year
with a BANG!**

**Saturday, December 31st
7:00 p.m. Sharp
Westwood High School
Free!**



Fun for all ages!
A unique town event and
a tradition for many
families!
Bring a thermos or two
of hot cocoa and enjoy
the wonderful
pyrotechnics!
A great way to start the
celebrations for the
new year!!

Westwood Early Childhood Council News – continued from page 7

LEARN ABOUT THE WESTWOOD ECC KATHY SCALES MEMORIAL PRESCHOOL SCHOLARSHIP...

Did Your Child LOVE Preschool?

- Creative Experiences • Learning and Play • Socialization • Gross motor activities •
• Music Appreciation • Language Enrichment •

But did you know that there are families in Westwood that cannot afford preschool? Surprised??

Please join the directors of Westwood's Preschool Community and the Early Childhood Council and donate to the Preschool Scholarship fund. The scholarship is named in memory of Kathy Scales, a long time Westwood resident and much-loved Westwood Public Schools preschool teacher. Your donation, no matter how small, may be the difference between a child from our community going to preschool, or missing this invaluable experience. Preschool years are the foundation of all later learning.

WHY DO WE NEED A PRESCHOOL SCHOLARSHIP FUND IN WESTWOOD?

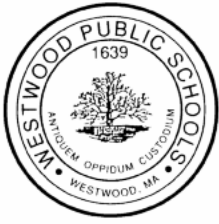
- State budget cuts resulted in a loss of \$30,000 dedicated to eligible Westwood 3 & 4 year olds to attend preschool.
- These funds, from 1995 until 2009, provided an average of 10 children each year with preschool tuition assistance through the Westwood Early Childhood Office.
- Currently several Westwood families with preschoolers are on the state wait list for tuition assistance. State budget cuts have closed access to these funds.
- Approximately 95% of all children entering Westwood Kindergarten have attended preschool. Without financial support to eligible families, this statistic will change with fewer children enrolled in preschool prior to entering Kindergarten.
- Research repeatedly demonstrates that children who attend high quality early education/care programs continue to show benefits of early education beyond the school years and into adulthood.
- Scholarships are administered by the Westwood Early Childhood Office through an application process. Families may be eligible if they are Westwood residents and can demonstrate financial need. Families who experience temporary financial need (i.e. job loss, medical needs, or another crisis creating a financial emergency) are eligible to apply.
- The Westwood Early Childhood Council (WECC) is accepting donations to the WECC Kathy Scales Memorial Preschool Scholarship Fund.
- Children in Westwood are waiting to go to preschool to play and learn with other children their age.

For information contact: Carol Craig-O'Brien • 781-461-9548 • cobrien@westwood.k12.ma.us

Kathy Scales Memorial Preschool Scholarship
Westwood Early Childhood Council

Westwood Early Childhood Office, 200 Nahatan St., Room A108, Westwood, MA 02090

Please make checks payable to: Westwood Early Childhood Council



WESTWOOD PUBLIC SCHOOLS

December
2011

page one

Dear Westwood Residents,

By all measures, the 2011-2012 school year has been exceptional. As we near the halfway mark, we can reflect on the many accomplishments of our students, faculty, and staff. Our students have performed at a high level in all of their academic and extra-curricular endeavors, and continue to represent our town with distinction. The same can be said about our teachers, who are among the best in the Commonwealth, and who work hard to develop a culture of continuous growth and improvement. I believe strongly that the Westwood community gets a great return on its investment in our public school system. Thank you for your continued support and have a great holiday season.



John D. Atomeci

Westwood Students Go To the Cloud

This year, several students at Thurston Middle School and Westwood High School are trying out a new type of computer. These computers, called Google Chromebooks, are being piloted in **Tiffany Marchbank's** 7th grade ELA classes, **Debi Peterson's** 8th grade ELA classes, **Emily Miller's** high school science classes, and **Angela Stonehouse Wilson's** high school ELA classes.

Unlike traditional laptops, Chromebooks are truly a cloud computing device. These devices connect directly to the Internet via a web browser called Chrome OS, which also serves as the computer's operating system. Applications such as word processing, spreadsheets, and photo editing are all accessed on the web. As a result, there is no software to install on the computer and all updates to the operating system happen automatically over the Internet. Because all students' work is "stored in the cloud," they can access their information from any computer connected to the Internet. For example, students can start working on an assignment in class on a Chromebook and then pick up where they left off at home later in the day.

Chromebooks offer a number of other advantages over traditional laptops, including 8.5-hour battery life, 8-second boot time, web-based management, immunity to viruses, low cost of ownership, and virtually no technical support requirements.


Chromebooks are also integrated with the Google Apps suite of applications, which, among other things, provides students with opportunities to collaborate with peer groups on the same document, simultaneously, and in real-time. For example, consider students in Ms. Wilson's sophomore English class. Rather than take notes on various aspects of *Lord of the Flies*, students can be found collaborating on a shared Google Document, exchanging ideas



Students in Tiffany Marchbank's 7th Grade ELA class working on Chromebooks

about the book, and generally participating in a highly student-centered learning experience. Students and teachers have expressed

that this new environment is much more interactive, engaging, purposeful, and ultimately provides them with better opportunities to access and retain information and to develop a deeper level of understanding.

The Westwood Schools are evaluating this technology during the 2011-2012 school year with an eye towards incorporating Chromebooks on a larger scale. Early indications suggest that this pilot has been extremely successful. 



WESTWOOD PUBLIC SCHOOLS

December
2011
page two

Westwood Integrated Preschool Values Community Connections

The Westwood Public Schools Integrated Preschool is a high-quality preschool program accredited by the NAEYC, the National Association for the Education of Young Children. NAEYC

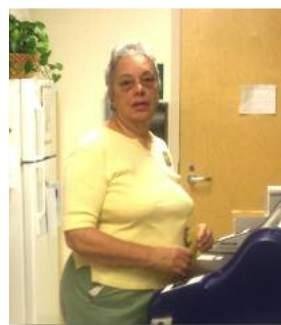
accreditation is the “gold standard” of approval, with only 8 percent of U.S. preschools currently accredited, according to *Parents Magazine*.



We are eager to work with our community and have started a program to utilize senior volunteers. Our current senior volunteer, **Lucille Rzucildo**, or “Lou” as

everyone at the preschool calls her, is a valuable contributor to our program. Lou (*pictured below*) has reorganized and maintains the preschool library and

supports the teachers by helping to prepare the many materials that are required for developmentally-appropriate preschool instruction.



Our current senior volunteer, **Lou Rzucildo**

In addition to community involvement our program strives to enhance the transition and support for our children as they enter kindergarten. The Westwood Integrated Preschool welcomes inquiries regarding

enrollment. Interested town residents should contact Preschool Director Sandra Raymond at (781) 326-7500, ext. 5113, or by email at sraymond@westwood.k12.ma.us. 



Halloween Visit to Fox Hill



A little-known tradition in Westwood is the annual visit of our Kindergarten classes to Fox Hill Village. Every year Fox Hill opens their doors to excited and costumed students and their teachers for an all-around treat. Buses pick up the students at their schools and ferry them to Fox Hill.

The students and residents enjoy a special time together culminating in a magic show in the auditorium. There is plenty of audience participation from all ages—young and old! Each student receives a parting goodie bag and many Happy Halloween memories of their Fox Hill visit. Thank you, Fox Hill!

WESTWOOD PUBLIC LIBRARY

Winter 2011-2012

PLEASE NOTE: Due to the library building project, children's programming is limited to the Islington Branch Library.

Islington Branch Programs for Children

Babies & Books – 2 years and under with caregiver
Jan 20-Mar 2 Fridays, 10:30-10:50 a.m.

Registration is not required for this program. There is no storytime during February school vacation week.

Storytime – Ages 3 and up
Jan 17-Feb 28 Tuesdays, 9:30-10:15 a.m.

Registration is required for this program and begins December 15th. There is no storytime during February school vacation week.

Legos – School age
Jan 3, 10, 17, 24, 31 Tuesdays, 3:30-4:00 p.m.

Design creations using the library Legos!
Registration is required for this program and begins December 15th.

Islington Branch Book Share
Jan 24, Mar 20 Tuesdays, 10:30 a.m.

Bring a book you've been reading to share with the group.

Islington Branch Book Talk
Feb 29 Wednesday, 6:30 p.m.

Title to be announced.

Main Library Adult Programs

PAGETURNERS

Mar 20 Tuesday, 10:30 a.m.

A book review program for adult readers with Nancy Hogan.

Location: Main Library Meeting Room

For further information, please call the
Main Library at 781-326-7562
or the Islington Branch Library at 781-326-5914
or visit the web site at www.westwoodlibrary.org

(More) Westwood Early Childhood Council News

Library Zoo/Museum Passes

Looking to take your children to the zoo? Westwood Early Childhood Council funds annual passes to Zoo New England for Franklin Park Zoo and Stoneham Zoo. Roger Williams Park Zoo passes are also purchased and available. There are many others available including the Children's Museum, Museum of Science and more!

Check out the Westwood Public Library's collection of passes that offer free or reduced entry fees. Call ahead to reserve 781-320-1040.

TOWN BULLETIN BOARD

Dec 1 **Dog Licensing begins**
Town Clerk's office; *see story page 3*

Dec 1 **No Overnight Street Parking begins**
see story page 2

Dec 10 **Fundraiser for Westwood Day** Visit with Santa
9 a.m. to noon Islington Community Center
see story page 9

Jan 14 **Community Blood Drive**
9 a.m. to 3 p.m. Westwood Masonic Building
655 High Street: *see story page 2*

Jan 21 **Series of Special Saturday Book Sales**

Feb 25 Main Library lower meeting room

Mar 24 10 a.m. to 2 p.m.; *see story page 2*

Feb 3 Deadline for Spring Newsletter submissions.

Mar 6 **Presidential Primary:** Don't forget to vote!

Apr 1 **Rotary Club Annual Pancake Breakfast**
8 a.m. to noon Westwood High School
see story page 7

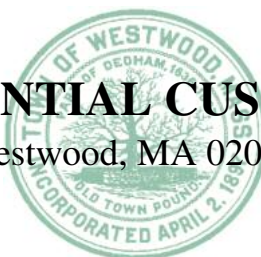
Apr 28 **Rotary Club Recycle Program**
9 a.m. to 2 p.m. First Baptist Church
see story page 7

This Winter in Westwood
580 High Street
Westwood, MA 02090

Presort Standard
U.S. Postage
PAID
Permit #22
Westwood MA 02090

RESIDENTIAL CUSTOMER

Westwood, MA 02090

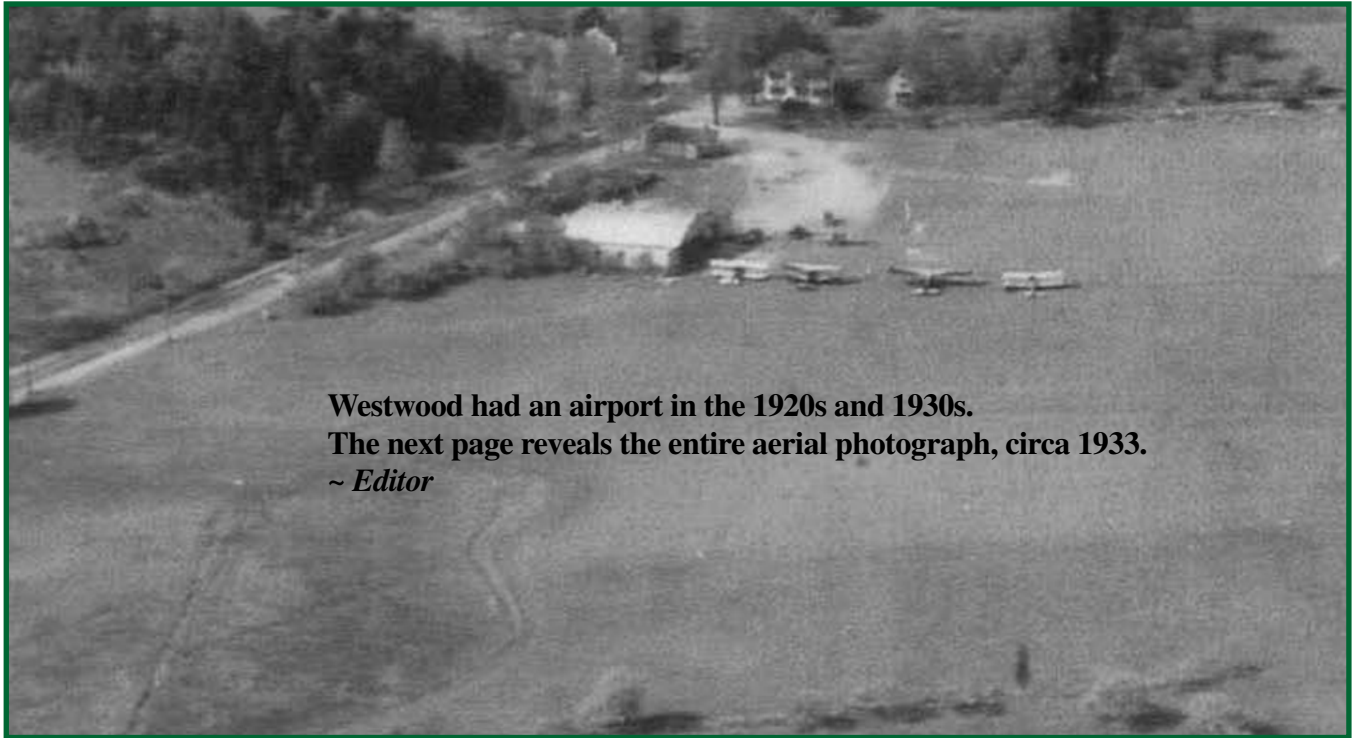


WHERE IN WESTWOOD

Winter 2011

From page 5 of the Winter 2011 printed edition

Where in Westwood...**was** this?



Westwood had an airport in the 1920s and 1930s.
The next page reveals the entire aerial photograph, circa 1933.
~ *Editor*

From page 12 of the Winter 2011 printed edition

Where in Westwood was this?

Information for this Where in Westwood item is from Mr. John Pritchard of the Westwood Historical Society: Westwood had an airport in the 1920s and 30s! The airport was located at the corner of High and Pond Streets. Flying lessons were taught, sightseeing trips offered, some stunt flying shows and demonstrations were conducted by Alfred Magaletta and others. After an unsuccessful venture into contracting with the government to provide airmail services failed, the airport closed in 1935. Attempts after World War II to reactivate the airfield also failed. The old airport area is now dotted with homes.

Full aerial view circa 1933 of Westwood's airport and surrounding land.



Photo is courtesy of Mr. John Pritchard of the Westwood Historical Society